

FB 701

Rd. #204 Stated 25'

Stated 25' each side of
R for 50' R/W by order of Harrison
Twp. Trustees. Extra R/W acquired
by trustees.

June 21, '56

C.H. #204 (Cont'd)

Spink
Nichols
Behr
Craig

28

Don Downing



Thomas
Ewing

Don
Downing

REPLACED w/1" ϕ
1971

0+00 R.P.S. on
top of stone

C.H. #32

10' Walnut

24' Maple

3446

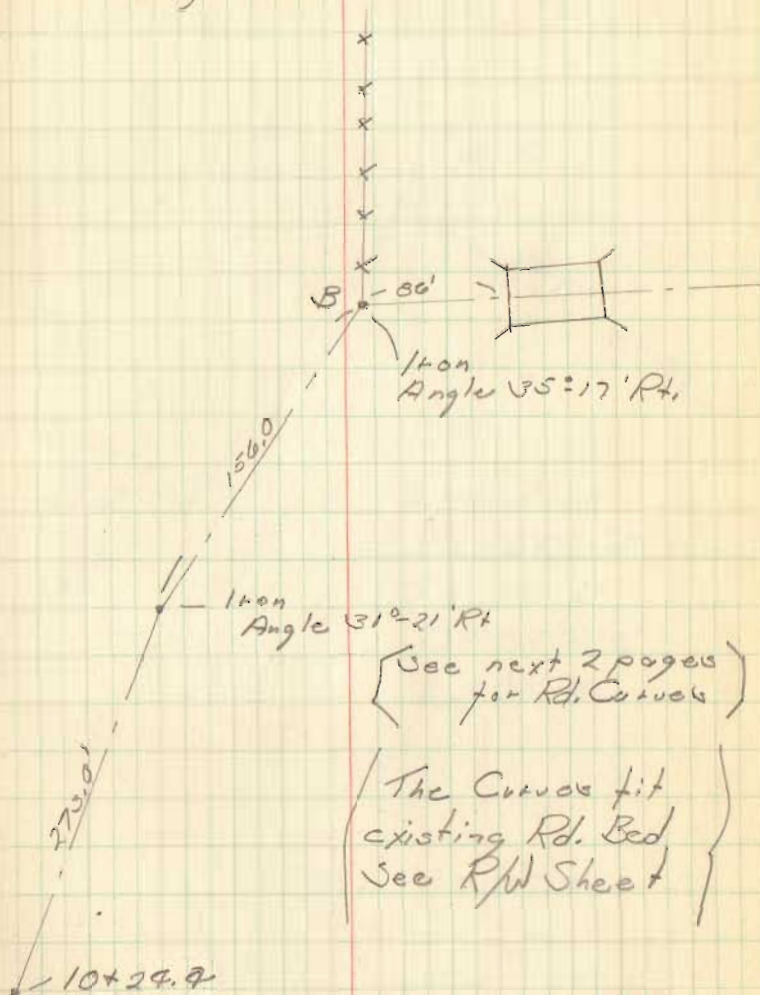
INDEXED ON MAP

C.H. # 209 (contd)

FB 701

Surveyed
from Deeds
& Rd. Records

29



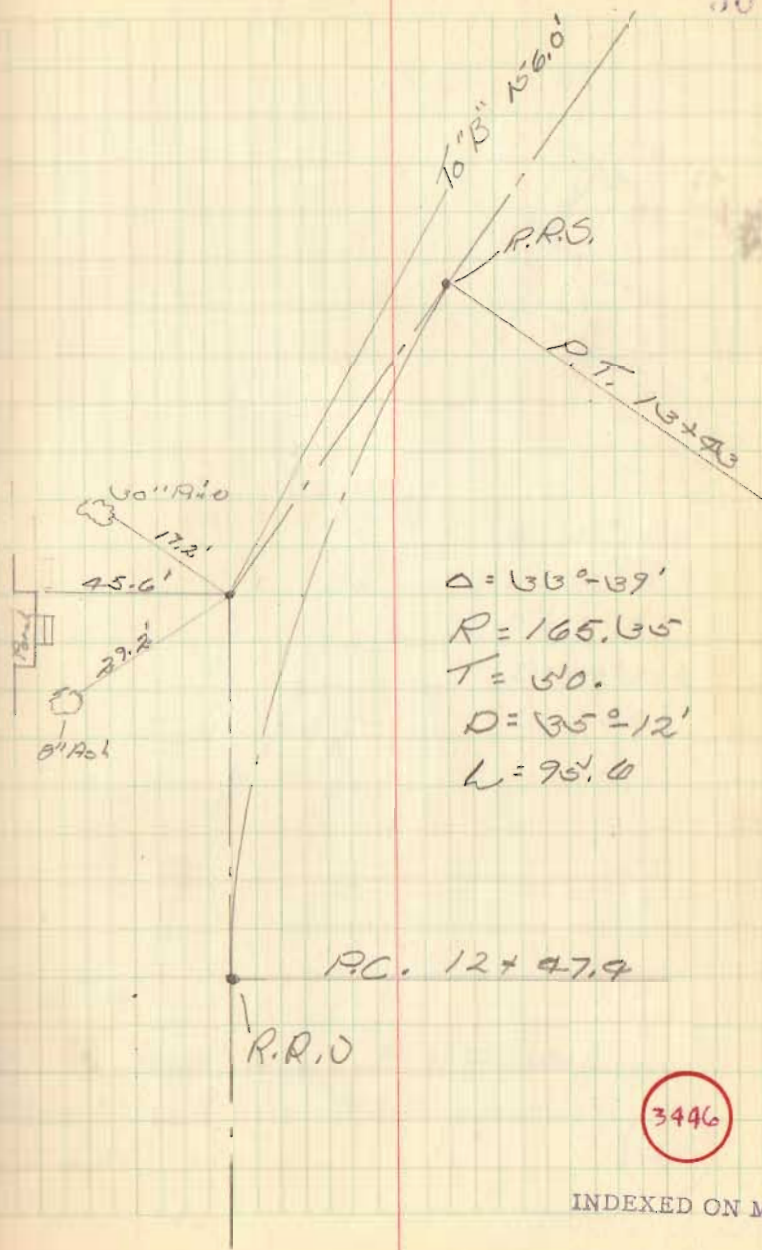
3446

INDEXED ON MAP

C.H. # 209

FB 701

30

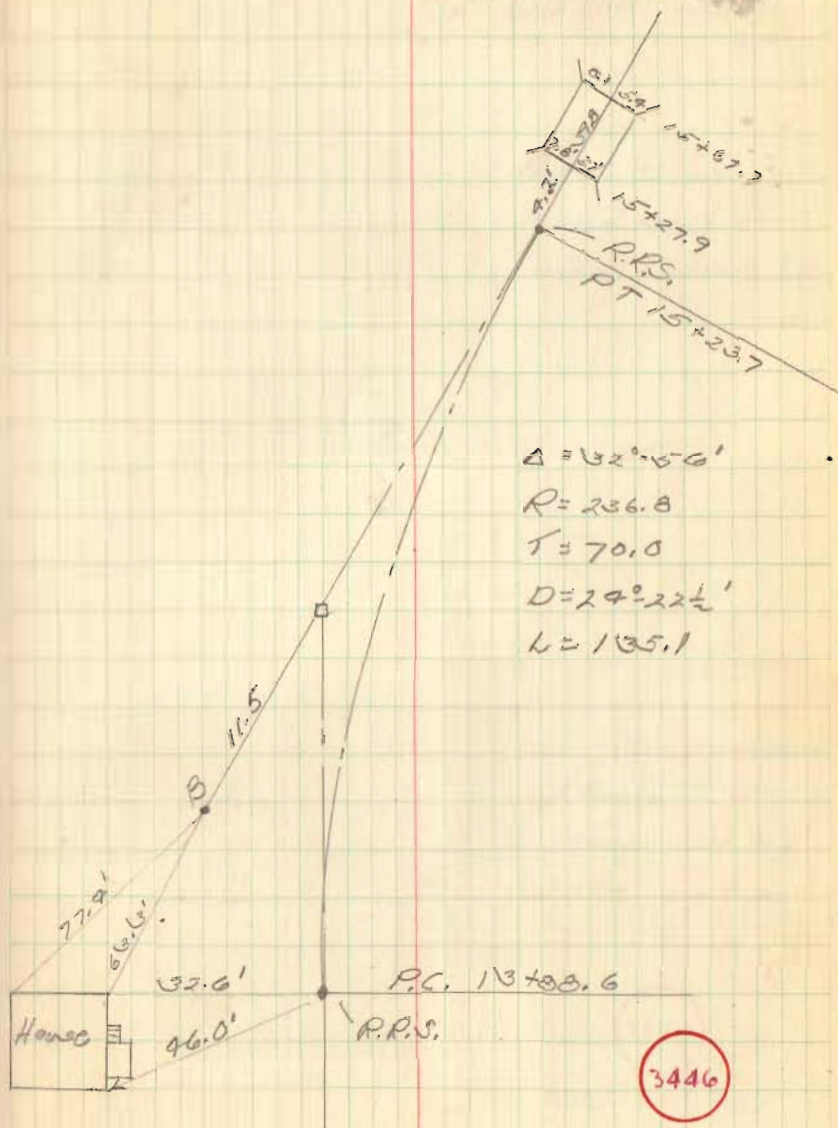


3446

INDEXED ON MAP

C.H. # 204 (contd)

FB 701



3446

INDEXED ON MAP

C.H. #204 (Cont'd)

FB 701

32

7.5'

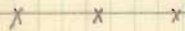


R Iron
C. William Dytom
x x x 20+19

Note: E was
moved west to
miss Dytom's barn

7.0'-0"

William Dytom



Sta. 16+49.2
Angle 0°-08' Lt.
Stone with R.R.
spikes on top

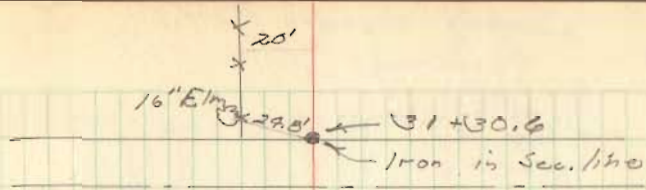
3446

INDEXED ON MAP

C.H. #204 (condol)

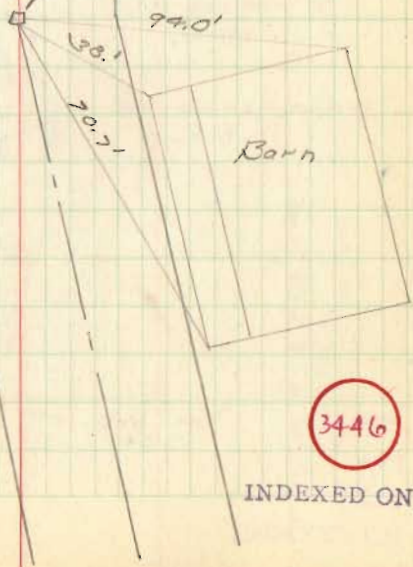
FB 701

33



N 8° E

Hub Sta. 22+94.15
Angle 5° 35' Rt



3446

INDEXED ON MAP

Harrison Township Road 204
Harrison Township, Logan County, Ohio
Section 9, Town 3, Range 14

FB 709

12+97.52 fd. capped ϕ iron (Beeslin)

12+94.96 Tacked Hub set

Rt. def. $\angle = 33^\circ - 40' - 35''$

10+45.06 fd. RR Spk. (P.O.T)

10+24.51 fd. RR Spk. - Rt. def. $\angle = 13^\circ - 28'$

0+00 fd. 1" ϕ iron (Ref. F.B. 701; pg 28)

Nichols
Dill

August 91

curve data

P.I. = Sta. 12+94.96

$\Delta = 33^\circ - 40' - 35''$

T = 50.00'

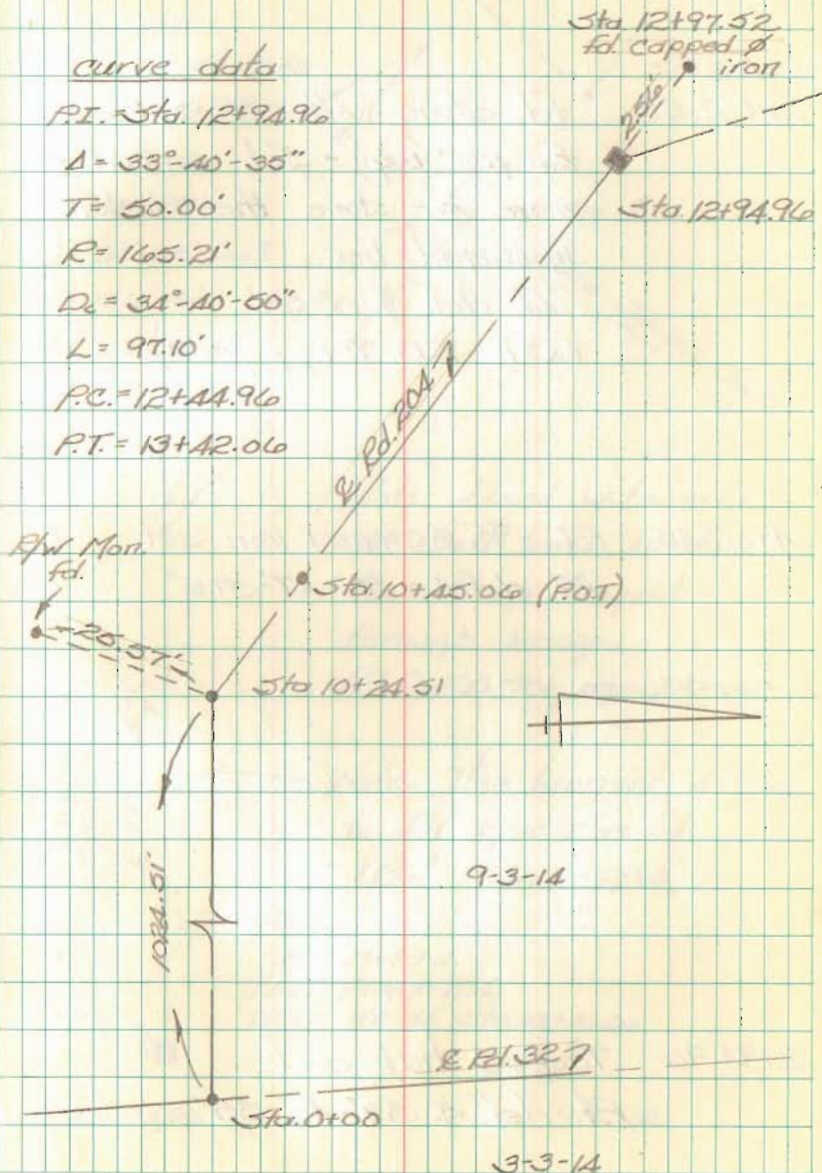
R = 165.21'

$D_c = 34^\circ - 40' - 50''$

L = 97.10'

P.C. = 12+44.96

P.T. = 13+42.06



Harrison Township Road 204
Harrison Township, Logan County, Ohio
Section 9, Town 3, Range 14

FB 709

10+67.58 fd. stone with P.R. Spk on top (34" deep) - Set capped ϕ iron over stone then installed monument box.

Lt. def. \angle $0^{\circ}-33'$
(Ref. F.B. 701; pg. 32)

14+57.45 P.I. $\frac{5}{8}$ " ϕ capped iron set.
Rt. def. \angle = $32^{\circ}-47'-37.5''$

12+94.96 Tacked hub set
Rt. def. \angle $33^{\circ}-40'-35''$

Nichols
Dill

August 91

68

curve data

P.I. = Sta 14+57.45

$\Delta = 32^{\circ}-47'-37.5''$

T = 70.00'

R = 237.89'

$\Delta c = 24^{\circ}-05'-06.9''$

L = 136.16'

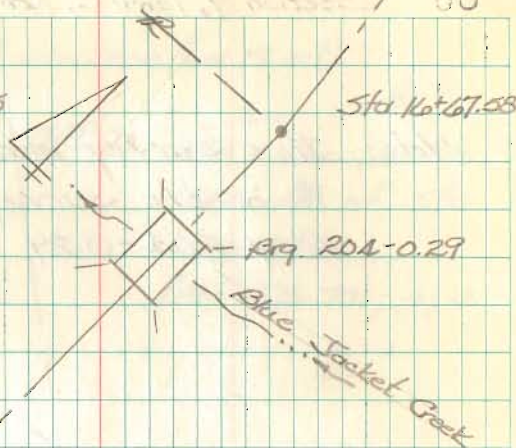
P.C. = 13+87.45

P.T. = 15+23.61

Sta. 14+57.45

Sta. 12+97.52
fd. ϕ capped iron
(Grassline)
R 12+204.7

Sta. 12+94.96



Note: Used witnesses on steel truss bridge to set up tangent through bridge.
(Ref. F.B. 701, pgs. 28-33)

Note: This tangent set up to f.t. R/W Mon fd.
(Ref. Plan X-204)

R/W Mon. Fd.
(Ref. Plan X-204)
25.00' Rt. of Sta. 13+42.06

9-3-14

Harrison Township Road 20A
Harrison Township, Logan County, Ohio
Section 9, Town 3, Range 14

FB 709

Note: this survey made prior
to a site survey for
Brq. 20A-0.29

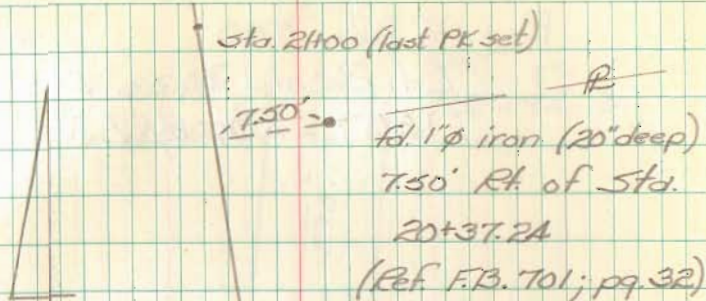
Kat+67.58 fld. stone with R.P. Spk. on
top (34" deep) - Set capped ϕ
iron over stone then installed
monument box.

Lt. def. \angle $0^{\circ}38'$
(Ref. F.B. 701; pg. 32)

Nichols
Dill

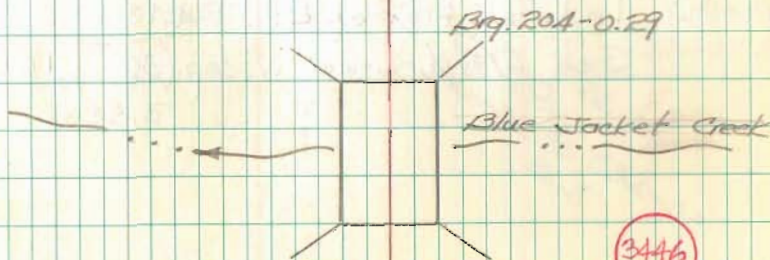
August 91

69



9-3-14

R Sta. Kat+67.58



3446