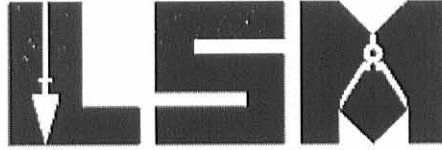


REC'D 8-26-08 SWM OK

Lee Surveying and Mapping Co., Inc.

Land Surveys • Topography • Subdivisions • Construction Layout

117 N. Madriver St.
Bellefontaine OH 43311



Phone: (937) 593-7335
Fax: (937) 593-7444

SHAWVER TRACT E (REVISED) 0.930 ACRE

Lying in Section 6, Town 3, Range 14, Harrison Township, Logan County, Ohio.

Being out of the Thomas F. Shawver, John L. Shawver and Charyl Ann Winner original 76.182 acre tract as deeded and described in Official Record 807, Page 890, Tract I of the Logan County Records of Deeds and being more particularly described as follows:

Commencing at a 5/8 inch iron rod found at the southeast corner of Shady Knolls Allotment No. 3 (Plat Cabinet A, Slide 421) on the intersection of the south right-of-way of Charyl Street and the east right-of-way of John Street.

THENCE, with the south right-of-way of Charyl Street (60 feet wide), N 85°-03'-58"W, a distance of 1135.05 feet to a 5/8 inch iron rod set at the TRUE POINT OF BEGINNING.

THENCE, S 04°-35'-15"W, a distance of 300.00 feet to a 5/8 inch iron rod set, passing a 5/8 inch iron rod set at 150.00 feet.

THENCE, N 85°-03'-58"W, a distance of 135.00 feet to a 5/8 inch iron rod set.

THENCE, N 04°-35'-15"E, a distance of 300.00 feet to a 5/8 inch iron rod set on the south right-of-way of Charyl Street.

THENCE, with the south right-of-way of Charyl Street, S 85°-03'-58"E, a distance of 135.00 feet to the point of beginning.

Containing 0.930 acre.

The basis for bearings is the center-line of County Highway 130, being N 36°-07'-00"W, and all other bearings are from angles and distances measured in a field survey by Lee Surveying and Mapping Co., Inc. on February 28, 2006 and August 21, 2008.

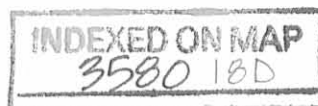


ORIGINAL STAMP IN GREEN

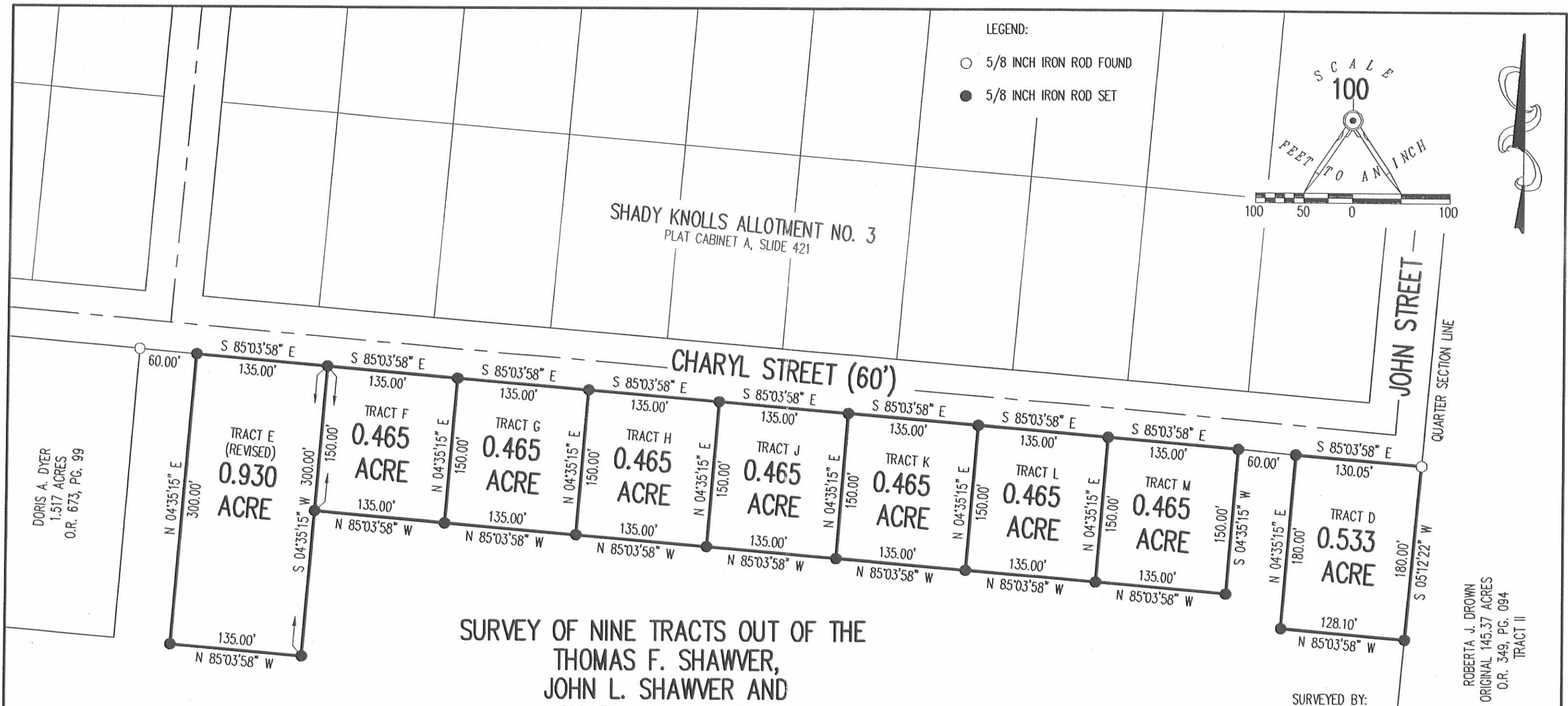
Description prepared by:

William K. Bruce
Professional Surveyor 7437
August 21, 2008

3377088



REC'D B-20-08 SMM BK



SURVEY OF NINE TRACTS OUT OF THE
 THOMAS F. SHAWVER,
 JOHN L. SHAWVER AND
 CHARYL ANN WINNER
 76.182 ACRE TRACT
 OFFICIAL RECORD 807, PAGE 890
 TRACT I
 SECTION 6, TOWN 3, RANGE 14
 HARRISON TOWNSHIP
 LOGAN COUNTY, OHIO

THOMAS F. SHAWVER,
 JOHN L. SHAWVER AND
 CHARYL ANN WINNER
 76.182 ACRES
 O.R. 807, PG. 890
 TRACT I

ROBERTA J. DROWN
 ORIGINAL 145.37 ACRES
 O.R. 349, PG. 094
 TRACT II

NOTE:
 THE BASIS FOR BEARINGS IS THE CENTER-LINE OF
 COUNTY HIGHWAY 130, BEING N 36°-07'-00"W.

2 WORKING DAYS
BEFORE YOU DIG
 CALL TOLL FREE **800-362-2764**
 OHIO UTILITIES PROTECTION SERVICE



ORIGINAL STAMP IN GREEN

William K. Bruce
 WILLIAM K. BRUCE
 PROFESSIONAL SURVEYOR 7437
 FEBRUARY 28, 2006
 REVISED AUGUST 21, 2008 (REVISED TRACT E)

COPYRIGHT 2008 BY:
LEE SURVEYING & MAPPING CO., INC.
 117 North Madriver Street
 BELLEFONTAINE, OHIO 43311
 (937) 593-7335

KSS D0808 3377088 3377016.ASC L-3377-1

INDEXED ON MAP
 3580 18P

REC'D 2-22-12 SAM OK

Lee Surveying and Mapping Co., Inc.

Land Surveys • Topography • Subdivisions • Construction Layout

117 N. Madriver St.
Bellefontaine OH 43311



Phone: (937) 593-7335
Fax: (937) 593-7444
surveys@lsminc.us

CHRISTMAN 20 FEET WIDE INGRESS/EGRESS EASEMENT

Lying in Section 6, Town 3, Range 14, Harrison Township, Logan County, Ohio.

Being a 20 feet wide ingress/egress easement through the Stephen J. Christman and Angela L. Christman 2.705 acre tract deeded and described in Official Record 1042, Page 988 and being more particularly described as follows:

Commencing at a stone found on the east line of the west half of Section 6 and the center-line of County Highway 130 (60 feet wide) extended.

THENCE, with the center-line of County Highway 130, N 36°-17'-00"W, a distance of 1592.47 feet to a MAG nail found at the TRUE POINT OF BEGINNING, passing a 3/4 inch iron pipe found at 36.85 feet.

THENCE, with the center-line of County Highway 130, N 36°-17'-00"W, a distance of 20.00 feet to a MAG nail set.

THENCE, N 53°-43'-00"E, a distance of 100.00 feet to a 5/8 inch iron rod set, passing a 5/8 inch iron rod set at 30.00 feet.

THENCE, S 36°-17'-00"E, a distance of 20.00 feet to a 5/8 inch iron rod set.

THENCE, with the north line of the Richard B. Adams and Linda E. Adams original 31.71 acre tract (Vol. 360, Pg. 891) S 53°-43'-00"W, a distance of 100.00 feet to the point of beginning passing a 5/8 inch iron rod set at 70.00 feet.

Property is subject to any and all previous easements and rights-of-way of record.

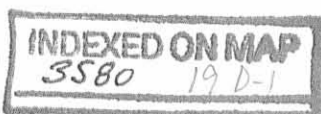
The basis for bearings is the center-line of County Highway 130, being N 36°-17'-00"W, and all other bearings are from angles and distances measured in a field survey by Lee Surveying and Mapping Co., Inc. on February 20, 2012.

Description prepared by:

William K. Bruce
Professional Surveyor 7437
February 20, 2012

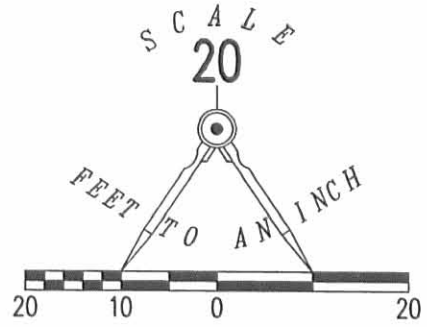


L-1571



REV'D 2-22-12 smj all

STEPHEN J. CHRISTMAN AND ANGELA L. CHRISTMAN
2.705 ACRE TRACT
O.R. 1042, PG. 988



LEGEND

- 5/8 INCH IRON ROD SET WITH PLASTIC I.D. CAP STAMPED "LSM7437"
- ⊙ MAG NAIL SET
- ⊙ MAG NAIL FOUND
- ⊗ 3/4 INCH IRON PIPE FOUND
- ⊠ STONE FOUND

RICHARD B. ADAMS, JR. AND LINDA E. ADAMS
ORIGINAL 31.71
VOL. 360, PG. 891

**SURVEY OF A 20 FEET WIDE
INGRESS/EGRESS EASEMENT THROUGH THE
STEPHEN J. CHRISTMAN AND ANGELA L. CHRISTMAN
2.705 ACRE TRACT
OFFICIAL RECORD 1042, PAGE 988
SECTION 6, TOWN 3, RANGE 14
HARRISON TOWNSHIP
LOGAN COUNTY, OHIO**

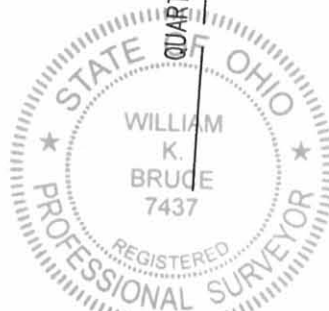
COUNTY HIGHWAY 130 (60 FEET WIDE)

BASIS FOR BEARINGS
N 36°17'00" W
1592.47'

QUARTER SECTION LINE

SURVEYED BY:

WILLIAM K. BRUCE
PROFESSIONAL SURVEYOR 7437
FEBRUARY 20, 2012



ORIGINAL STAMP IN GREEN

COPYRIGHT 2012 BY:
LEE SURVEYING & MAPPING CO., INC.
117 North Madriver Street
BELLEFONTAINE, OHIO 43311
(937) 593-7335
WWW.LSMINC.US
surveys@lsminc.us

ADW D0212 15710212 L-1571-3

2 WORKING DAYS
BEFORE YOU DIG
CALL TOLL FREE **800-362-2764**
OHIO UTILITIES PROTECTION SERVICE

INDEXED ON MAP
3580 19P

REC'D 3-13-12 SMM/AL

Lee Surveying and Mapping Co., Inc.

Land Surveys • Topography • Subdivisions • Construction Layout

117 N. Madriver St.
Bellefontaine OH 43311



Phone: (937) 593-7335
Fax: (937) 593-7444
surveys@lsminc.us

ADAMS 20 FEET WIDE INGRESS/EGRESS EASEMENT

Lying in Section 6, Town 3, Range 14, Harrison Township, Logan County, Ohio.

Being a 20 feet wide ingress/egress easement through the Richard B. Adams, Jr. and Linda E. Adams original 31.71 acre tract as deeded and described in Volume 360, Page 891 and being more particularly described as follows:

Commencing at a stone found on the east line of the west half of Section 6 and the center-line of County Highway 130 (60 feet wide) extended.

THENCE, with the center-line of County Highway 130, N 36°-17'-00"W, a distance of 1572.47 feet to a point, at the TRUE POINT OF BEGINNING, passing a 3/4 inch iron pipe found at 36.85 feet.

THENCE, with the center-line of County Highway 130, N 36°-17'-00"W, a distance of 20.00 feet to a MAG nail found.

THENCE, with the southwesterly line of the Stephen J. Christman and Angela L. Christman 2.705 acre tract (O.R. 1042, Pg. 998), N 53°-43'-00"E, a distance of 100.00 feet to a 5/8 inch iron rod set, passing a 5/8 inch iron rod set at 30.00 feet.

THENCE, S 36°-17'-00"E, a distance of 20.00 feet to a 5/8 inch iron rod set.

THENCE, S 53°-43'-00"W, a distance of 100.00 feet to the point of beginning, passing a 5/8 inch iron rod set at 70.00 feet.

Property is subject to any and all previous easements and rights-of-way of record.

The basis for bearings is the center-line of County Highway 130, being N 36°-17'-00"W, and all other bearings are from angles and distances measured in a field survey by Lee Surveying and Mapping Co., Inc. on March 8, 2012.

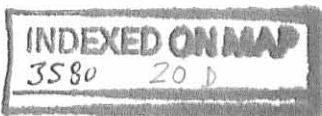
Description prepared by:

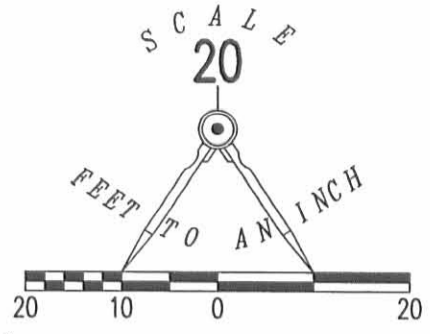
William K. Bruce
Professional Surveyor 7437
March 8, 2012



ORIGINAL STAMP IN GREEN

L-1571A

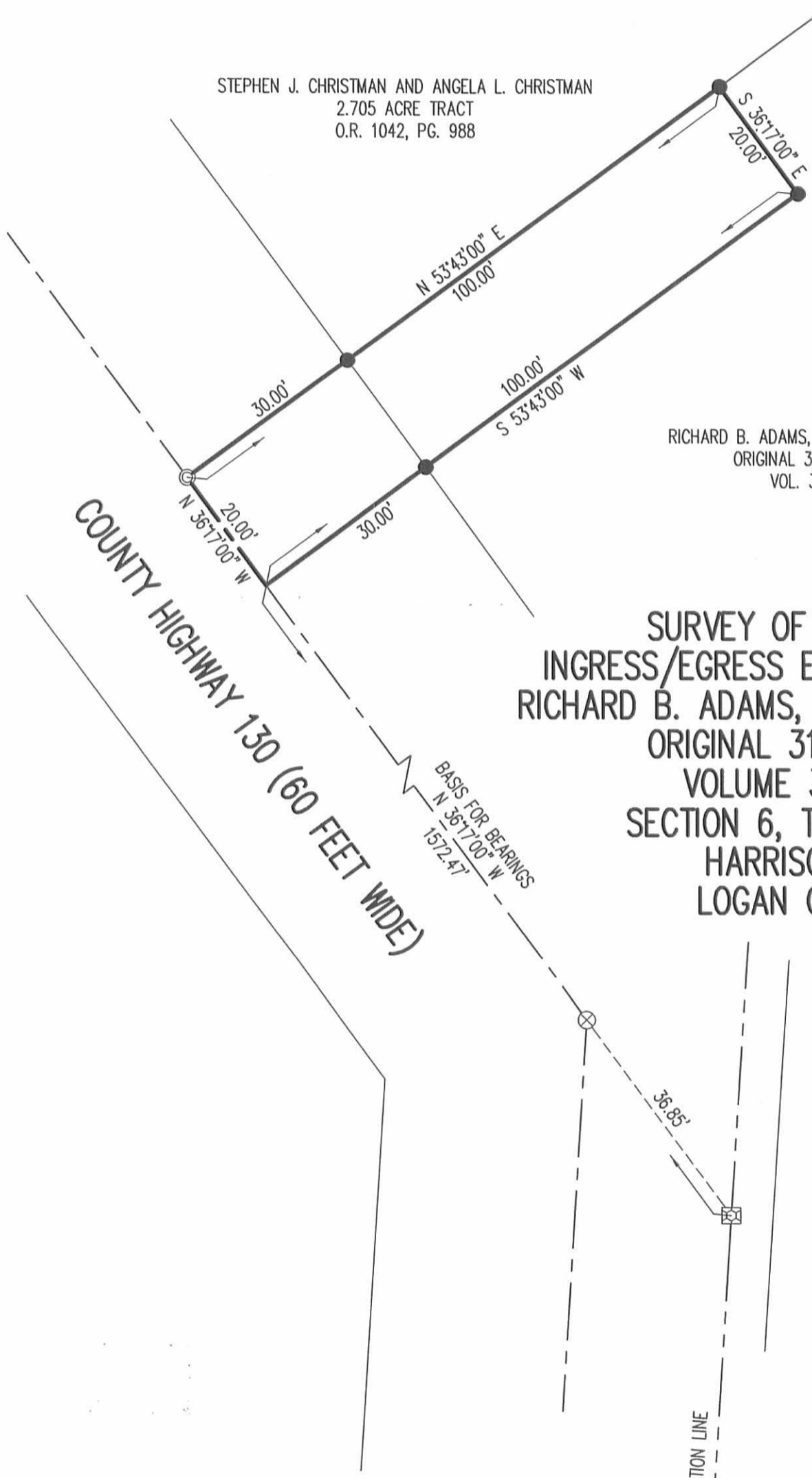




STEPHEN J. CHRISTMAN AND ANGELA L. CHRISTMAN
2.705 ACRE TRACT
O.R. 1042, PG. 988

RICHARD B. ADAMS, JR. AND LINDA E. ADAMS
ORIGINAL 31.71 ACRE TRACT
VOL. 360, PG. 891

- LEGEND
- 5/8 INCH IRON ROD SET WITH PLASTIC I.D. CAP STAMPED "LSM7437"
 - ⊙ MAG NAIL SET
 - ⊙ MAG NAIL FOUND
 - ⊗ 3/4 INCH IRON PIPE FOUND
 - ⊠ STONE FOUND

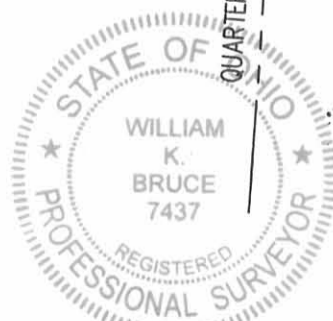


**SURVEY OF A 20 FEET WIDE
INGRESS/EGRESS EASEMENT THROUGH THE
RICHARD B. ADAMS, JR. AND LINDA E. ADAMS
ORIGINAL 31.71 ACRE TRACT
VOLUME 360, PAGE 891
SECTION 6, TOWN 3, RANGE 14
HARRISON TOWNSHIP
LOGAN COUNTY, OHIO**

SURVEYED BY:

William K. Bruce

WILLIAM K. BRUCE
PROFESSIONAL SURVEYOR 7437
MARCH 8, 2012



ORIGINAL STAMP IN GREEN

COPYRIGHT 2012 BY:
LEE SURVEYING & MAPPING CO., INC.
117 North Madriver Street
BELLEFONTAINE, OHIO 43311
(937) 593-7335
WWW.LSMINC.US
surveys@lsminc.us

2 WORKING DAYS
BEFORE YOU DIG
CALL TOLL FREE **800-362-2764**
OHIO UTILITIES PROTECTION SERVICE

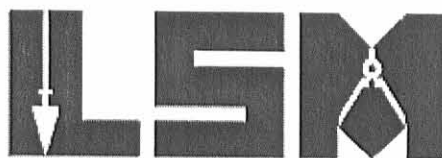
INDEXED ON MAP
3580 209

REC'D 3-20-12 SUMAL

Lee Surveying and Mapping Co., Inc.

Land Surveys • Topography • Subdivisions • Construction Layout

117 N. Madriver St.
Bellefontaine OH 43311



Phone: (937) 593-7335
Fax: (937) 593-7444
surveys@lsmcinc.us

SHAWVER 2.159 ACRES

Lying in Section 6, Town 3, Range 14, Harrison Township, Logan County, Ohio.

Being out of the Thomas F. Shawver 74.254 acre tract as deeded and described in Official record 981, Page 468, Tract I of the Logan County Records of Deeds and being more particularly described as follows:

Commencing on a 5/8 inch iron rod found on the southeast corner of Shady Knolls Allotment No. 3 (Plat Cabinet A, Slide 421) on the intersection of the south right-of-way of Charyl Street and the east right-of-way of John Street.

THENCE, with the south right-of-way of Charyl Street (60 feet wide) and the north line of the John L. Shawver 0.533 acre tract (O.R. 864, Pg. 116), N 85°-03'-58"W, a distance of 130.05 feet to a 5/8 inch iron rod found at the TRUE POINT OF BEGINNING.

THENCE, with the lines of the said 0.533 acre tract, the following two courses:

S 04°-35'-15"W, a distance of 180.00 feet to a 5/8 inch iron rod found.

S 85°-03'-58"E, a distance of 128.10 feet to a 5/8 inch iron rod found.

THENCE, with the west line of the Roberta J. Drown Trustee original 145.37 acre tract (O.R. 957, Pg. 761, Tract II), S 05°-12'-22"W, a distance of 120.00 feet to a 5/8 inch iron rod set.

THENCE, N 85°-03'-58"W, a distance of 591.81 feet to a 5/8 inch iron rod set.

THENCE, N 04°-35'-15"E, a distance of 150.00 feet to a 5/8 inch iron rod found.

THENCE, S 85°-03'-58"E, a distance of 405.00 feet to a 5/8 inch iron rod found.

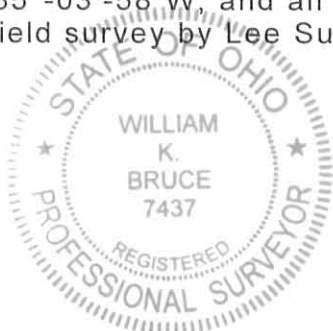
THENCE, N 04°-35'-15"E, a distance of 150.00 feet to a 5/8 inch iron rod found on the south right-of-way of Charyl Street.

THENCE, with the south right-of-way of Charyl Street, S 85°-03'-58"E, a distance of 60.00 feet to the point of beginning.

Containing 2.159 acres.

Property is subject to any and all previous easements and rights-of-way of record.

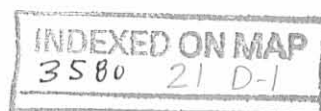
The basis for bearings is the south right-of-way of Charyl Street, being N 85°-03'-58"W, and all other bearings are from angles and distances measured in a field survey by Lee Surveying and Mapping Co., Inc. on March 15, 2012.



ORIGINAL STAMP IN GREEN

Description prepared by:

William K. Bruce
Professional Surveyor 7437
March 15, 2012



33770212

REC'D 3-20-12 SUMON

Lee Surveying and Mapping Co., Inc.

Land Surveys • Topography • Subdivisions • Construction Layout

117 N. Madriver St.
Bellefontaine OH 43311



Phone: (937) 593-7335
Fax: (937) 593-7444
surveys@lsmc.us

SHAWVER 1.395 ACRES

Lying in Section 6, Town 3, Range 14, Harrison Township, Logan County, Ohio.

Being out of the Thomas F. Shawver 74.254 acre tract as deeded and described in Official record 981, Page 468, Tract I of the Logan County Records of Deeds and being more particularly described as follows:

Commencing on a 5/8 inch iron rod found on the southeast corner of Shady Knolls Allotment No. 3 (Plat Cabinet A, Slide 421) on the intersection of the south right-of-way of Charyl Street and the east right-of-way of John Street.

THENCE, with the south right-of-way of Charyl Street (60 feet wide) and the north line of the John L. Shawver 0.533 acre tract (O.R. 864, Pg. 116), N 85°-03'-58"W, a distance of 190.05 feet to a 5/8 inch iron rod found at the TRUE POINT OF BEGINNING, passing a 5/8 inch iron rod found at 130.05 feet.

THENCE, S 04°-35'-15"W, a distance of 150.00 feet to a 5/8 inch iron rod found.

THENCE, N 85°-03'-58"W, a distance of 405.00 feet to a 5/8 inch iron rod found.

THENCE, with the east line of the Brian L. Weymouth 0.465 acre tract (O.R. 859, Pg. 850), N 04°-35'-15"E, a distance of 150.00 feet to a 5/8 inch iron rod found on the south right-of-way of Charyl Street.

THENCE, with the south right-of-way of Charyl Street, S 85°-03'-58"E, a distance of 405.00 feet to the point of beginning.

Containing 1.395 acres.

Property is subject to any and all previous easements and rights-of-way of record.

The basis for bearings is the south right-of-way of Charyl Street, being N 85°-03'-58"W, and all other bearings are from angles and distances measured in a field survey by Lee Surveying and Mapping Co., Inc. on March 15, 2012.

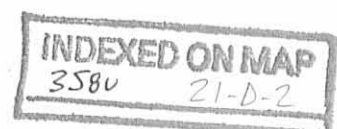


Description prepared by:

William K. Bruce

William K. Bruce
Professional Surveyor 7437
March 15, 2012

33770212



REV'D 3-20-12 80M OK

SHADY KNOLLS ALLOTMENT NO. 3
PLAT CABINET A, SLIDE 421

CHARYL STREET (60')

JOHN STREET

QUARTER SECTION LINE

THOMAS F. SHAWVER
74.254 ACRES
O.R. 981, PG. 468
TRACT I

BRIAN L. WEYMOUTH
0.465 ACRE
O.R. 859, PG. 850

1.395 ACRES

2.159 ACRES

JOHN L. SHAWVER
0.533 ACRE
O.R. 864, PG. 116

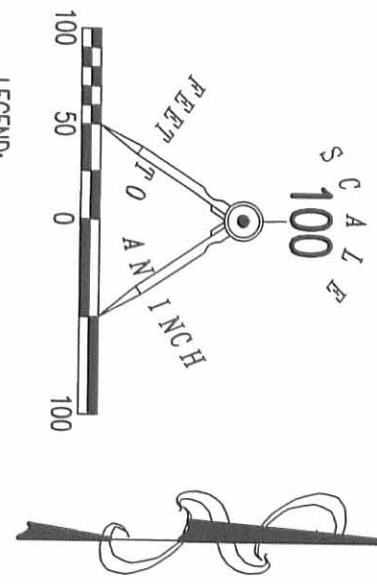
ROBERTA J. DROWN TRUSTEE
ORIGINAL 145.37 ACRES
O.R. 957, PG. 761
TRACT II

**SURVEY OF TWO TRACTS OUT OF THE
THOMAS F. SHAWVER
74.254 ACRE TRACT
OFFICIAL RECORD 981, PAGE 468
TRACT I**
SECTION 6, TOWN 3, RANGE 14
HARRISON TOWNSHIP
LOGAN COUNTY, OHIO

SURVEYED BY:

William K. Bruce
WILLIAM K. BRUCE
PROFESSIONAL SURVEYOR 7437
MARCH 15, 2012

COPYRIGHT 2012 BY:
LEE SURVEYING & MAPPING CO., INC.
117 North Madriver Street
BELLEFONTAINE, OHIO 43311
(937) 593-7335
www.lsmiinc.us
surveys@lsmiinc.us



2 WORKING DAYS
BEFORE YOU DIG
CALL TOLL FREE 800-362-2764
OHIO UTILITIES PROTECTION SERVICE

INDEXED ON MAP
3580 ZIP

KSS D0212 33770212 L-3377-3

REVID 3-26-12 SMY OK

Lee Surveying and Mapping Co., Inc.

Land Surveys • Topography • Subdivisions • Construction Layout

117 N. Madriver St.
Bellefontaine OH 43311



Phone: (937) 593-7335
Fax: (937) 593-7444
surveys@lsmcinc.us

SHAWVER 1.395 ACRES

Lying in Section 6, Town 3, Range 14, Harrison Township, Logan County, Ohio.

Being out of the Thomas F. Shawver 74.254 acre tract as deeded and described in Official record 981, Page 468, Tract I of the Logan County Records of Deeds and being more particularly described as follows:

Commencing on a 5/8 inch iron rod found on the southeast corner of Shady Knolls Allotment No. 3 (Plat Cabinet A, Slide 421) on the intersection of the south right-of-way of Charyl Street and the east right-of-way of John Street.

THENCE, with the south right-of-way of Charyl Street (60 feet wide), N 85°-03'-58"W, a distance of 730.05 feet to a 5/8 inch iron rod set at the TRUE POINT OF BEGINNING.

THENCE, with the west line of the Brian L. Weymouth 0.465 acre tract (O.R. 859, Pg. 850), S 04°-35'-15"W, a distance of 150.00 feet to a 5/8 inch iron rod set.

THENCE, N 85°-03'-58"W, a distance of 405.00 feet to a 5/8 inch iron rod set.

THENCE, with the east line of the Tye Gietzen 0.930 acre tract (O.R. 928, Pg. 860), N 04°-35'-15"E, a distance of 150.00 feet to a 5/8 inch iron rod set on the south right-of-way of Charyl Street.

THENCE, with the south right-of-way of Charyl Street, S 85°-03'-58"E, a distance of 405.00 feet to the point of beginning.

Containing 1.395 acres.

Property is subject to any and all previous easements and rights-of-way of record.

The basis for bearings is the south right-of-way of Charyl Street, being N 85°-03'-58"W, and all other bearings are from angles and distances measured in a field survey by Lee Surveying and Mapping Co., Inc. on February 28, 2006.



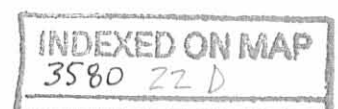
ORIGINAL STAMP IN GREEN

Description prepared by:

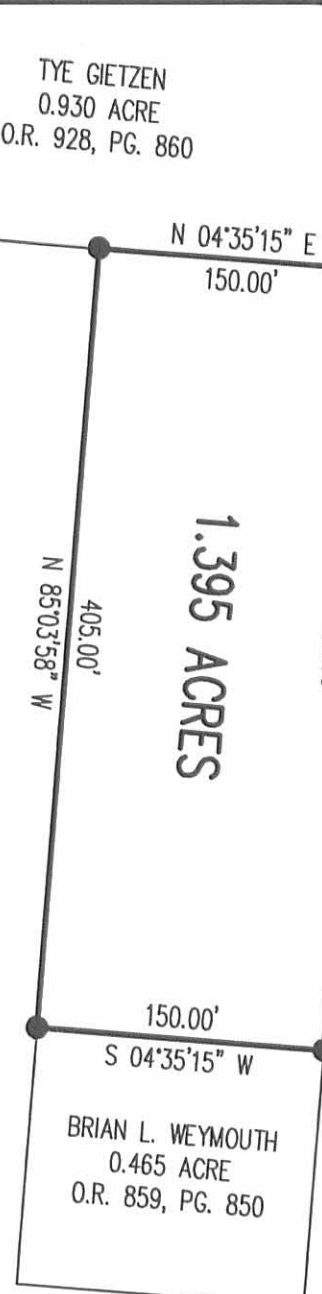
A handwritten signature in cursive script that reads 'William K. Bruce'.

William K. Bruce
Professional Surveyor 7437
March 21, 2012

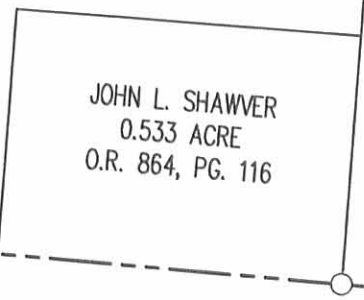
33770212B



REID 3-20-12 SWM BK



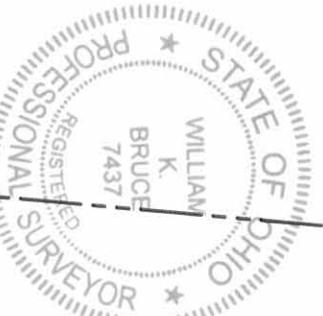
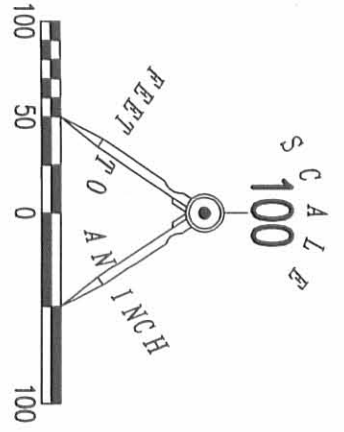
THOMAS F. SHAWVER
74.254 ACRES
O.R. 981, PG. 468
TRACT 1



SURVEYED BY:

William K. Bruce
WILLIAM K. BRUCE
PROFESSIONAL SURVEYOR 7437
FEBRUARY 28, 2006

SURVEY OF 1.395 ACRES OUT OF THE
THOMAS F. SHAWVER
74.254 ACRE TRACT
OFFICIAL RECORD 981, PAGE 468
TRACT 1
SECTION 6, TOWN 3, RANGE 14
HARRISON TOWNSHIP
LOGAN COUNTY, OHIO



COPYRIGHT 2012 BY:
LEE SURVEYING & MAPPING CO., INC.
117 North Madriver Street
BELLEFONTAINE, OHIO 43311
(937) 593-7335
WWW.LSMINC.US
surveys@lsminc.us
KSS D0212 33770212B L-3377-3



2 WORKING DAYS
BEFORE YOU DIG
CALL TOLL FREE 800-362-2764
OHIO UTILITIES PROTECTION SERVICE.

INDEXED ON MAP
3580 22P

REC'D 3-26-12 SMY alc

Lee Surveying and Mapping Co., Inc.

Land Surveys • Topography • Subdivisions • Construction Layout

117 N. Madriver St.
Bellefontaine OH 43311



Phone: (937) 593-7335
Fax: (937) 593-7444
surveys@lsminc.us

SHAWVER 78.015 ACRES

Lying in Section 6, Town 3, Range 14, Harrison Township, Logan County, Ohio.

Being out of the Thomas F. Shawver 74.254 acre tract, all of the 6.197 acre tract and part of the 3.598 acre tract as deeded and described in Official Record 981, Page 468, Tracts I, II and III of the Logan County Records of Deeds and being more particularly described as follows:

Commencing on a stone found in a monument box on the northwest corner of Section 6 on the center-line of Township Road 218.

THENCE, with the west line of Section 6 and the west right-of-way of Thomas Street (60 feet wide), S 04°-43'-50"W, a distance of 490.30 feet to a 1 inch iron bar found on the south right-of-way of Charyl Street at the TRUE POINT OF BEGINNING.

THENCE, with the south right-of-way of Charyl Street (60 feet wide), S 85°-03'-58"E, a distance of 60.05 feet to a 1 inch iron bar found.

THENCE, with the west line of the D. Michael Voss 1.376 acre tract (O.R. 173, Pg. 105, Tract I), S 04°-43'-52"W, a distance of 299.56 feet to a 5/8 inch iron rod found.

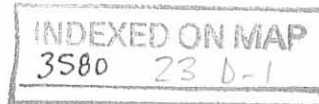
THENCE, with the south lines of the said 1.376 acre tract, the D. Michael Voss 1.377 acre tract (O.R. 173, Pg. 105, Tract II), the Larry Gross 1.377 acre tract and 1.515 acre tract (O.R. 941, Pg. 153, Tract I and Tract II), the Randy A. Neer 1.515 acre tract (O.R. 891, Pg. 33) and the Martin W. Burkhammer 1.517 acre tract (O.R. 992, Pg. 850), S 85°-05'-44"E, a distance of 1260.52 feet to a 5/8 inch iron rod found.

THENCE, with the east line of the said 1.517 acre tract, N 04°-35'-15"E, a distance of 298.92 feet to a 5/8 inch iron rod set on the south right-of-way of Charyl Street.

THENCE, with the south right-of-way of Charyl Street, S 85°-03'-58"E, a distance of 60.00 feet to a 5/8 inch iron rod set.

THENCE, with the lines of the Tye Gietzen 0.930 acre tract (O.R. 928, Pg. 860), the following three courses:

S 04°-35'-15"W, a distance of 300.00 feet to a 5/8 inch iron rod set.



Lee Surveying and Mapping Co., Inc.

Land Surveys • Topography • Subdivisions • Construction Layout

117 N. Madriver St.
Bellefontaine OH 43311



Phone: (937) 593-7335
Fax: (937) 593-7444
surveys@lsminc.us

S 85°-03'-58"E, a distance of 135.00 feet to a 5/8 inch iron rod set.

N 04°-35'-15"E, a distance of 150.00 feet to a 5/8 inch iron rod set.

THENCE, with line extended and with the south line of the Brian L. Weymouth 0.465 acre tract (O.R. 859, Pg. 850), S 85°-03'-58"E, a distance of 540.00 feet to a 5/8 inch iron rod found.

THENCE, S 04°-35'-15"W, a distance of 150.00 feet to a 5/8 inch iron rod set.

THENCE, S 85°-03'-58"E, a distance of 591.81 feet to a 5/8 inch iron rod set on the east line of the northwest quarter of Section 6.

THENCE, with the east line of the northwest quarter of Section 6 and the west line of the Roberta J. Drown Trustee original 145.37 acre tract (O.R. 957, Pg. 761, Tract II), S 05°-12'-22"W, a distance of 1444.60 feet to a 5/8 inch iron rod set.

THENCE, with the north lines of the Eric N. Everhart 11.117 acre tract (O.R. 1011, Pg. 759) and the James W. White and Tevon A. White, Trustees 6.34 acre tract (O.R. 832, Pg. 131), N 86°-39'-20"W, a distance of 1248.48 feet to a 5/8 inch iron rod set.

THENCE, with a northerly line of the said 6.34 acre tract, S 79°-14'-14"W, a distance of 406.10 feet to a MAG nail set on the center-line of County Highway 130, passing a 5/8 inch iron rod found at 372.94 feet.

THENCE, with the center-line of County Highway 130 (60 feet wide), the following two courses:

N 35°-55'-46"W, a distance of 272.34 feet to a MAG nail set.

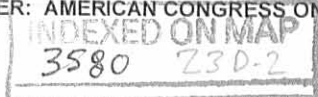
N 36°-07'-00"W, a distance of 509.03 feet to a MAG nail set.

THENCE, with the lines of the Brian J. Bruce 1.570 acre tract (O.R. 789, Pg. 600), the following three courses:

N 53°-53'-00"E, a distance of 315.00 feet to a 5/8 inch iron rod set, passing a 5/8 inch iron rod set at 30.00 feet.

N 36°-07'-00"W, a distance of 217.05 feet to a 5/8 inch iron rod found.

S 53°-53'-00"W, a distance of 315.00 feet to a MAG nail found on the center-line of County Highway 130, passing a 5/8 inch iron rod found at 285.00 feet.



Lee Surveying and Mapping Co., Inc.

Land Surveys • Topography • Subdivisions • Construction Layout

117 N. Madriver St.
Bellefontaine OH 43311



Phone: (937) 593-7335
Fax: (937) 593-7444
surveys@lsminc.us

THENCE, with the center-line of County Highway 130, N 36°-07'-00"W, a distance of 60.00 feet to a MAG nail found.

THENCE, with the southerly line of the Brittony C. Wright 1.085 acre tract (O.R. 859, Pg. 291), N 53°-53'-00"E, a distance of 315.00 feet to a 5/8 inch iron rod found, passing a 5/8 inch iron rod found at 30.00 feet.

THENCE, with the easterly line of the said 1.085 acre tract and said line extended, N 36°-07'-00"W, a distance of 300.00 feet to a 5/8 inch iron rod set.

THENCE, S 53°-53'-00"W, a distance of 315.00 feet to a MAG nail set on the center-line of County Highway 130, passing a 5/8 inch iron rod set at 285.00 feet.

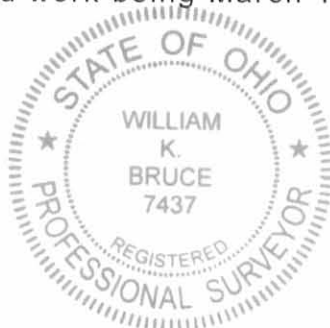
THENCE, with the center-line of County Highway 130, N 36°-07'-00"W, a distance of 165.30 feet to a MAG nail set on the intersection of the center-line of County Highway 32 on the west line of Section 6.

THENCE, with the west line of Section 6 and the east lines of the Charles Ronald Hanson 1.795 acre tract (O.R. 140, Pg. 680) and the Pamela K. Phelps 1.90 acre tract (O.R. 307, Pg. 537), N 04°-43'-50" E, a distance of 739.41 feet to the point of beginning.

Containing 78.015 acres, of which 0.710 acre is within the highway right-of-way.

Property is subject to any and all previous easements and rights-of-way of record.

The basis for bearings is the center-line of County Highway 130, being N 36°-07'-00"W, and all other bearings are from angles and distances measured in previous field surveys by Lee Surveying and Mapping Co., Inc. The last date of field work being March 15, 2012.

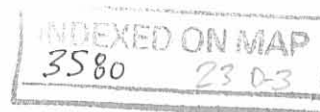


ORIGINAL STAMP IN GREEN

Description prepared by:

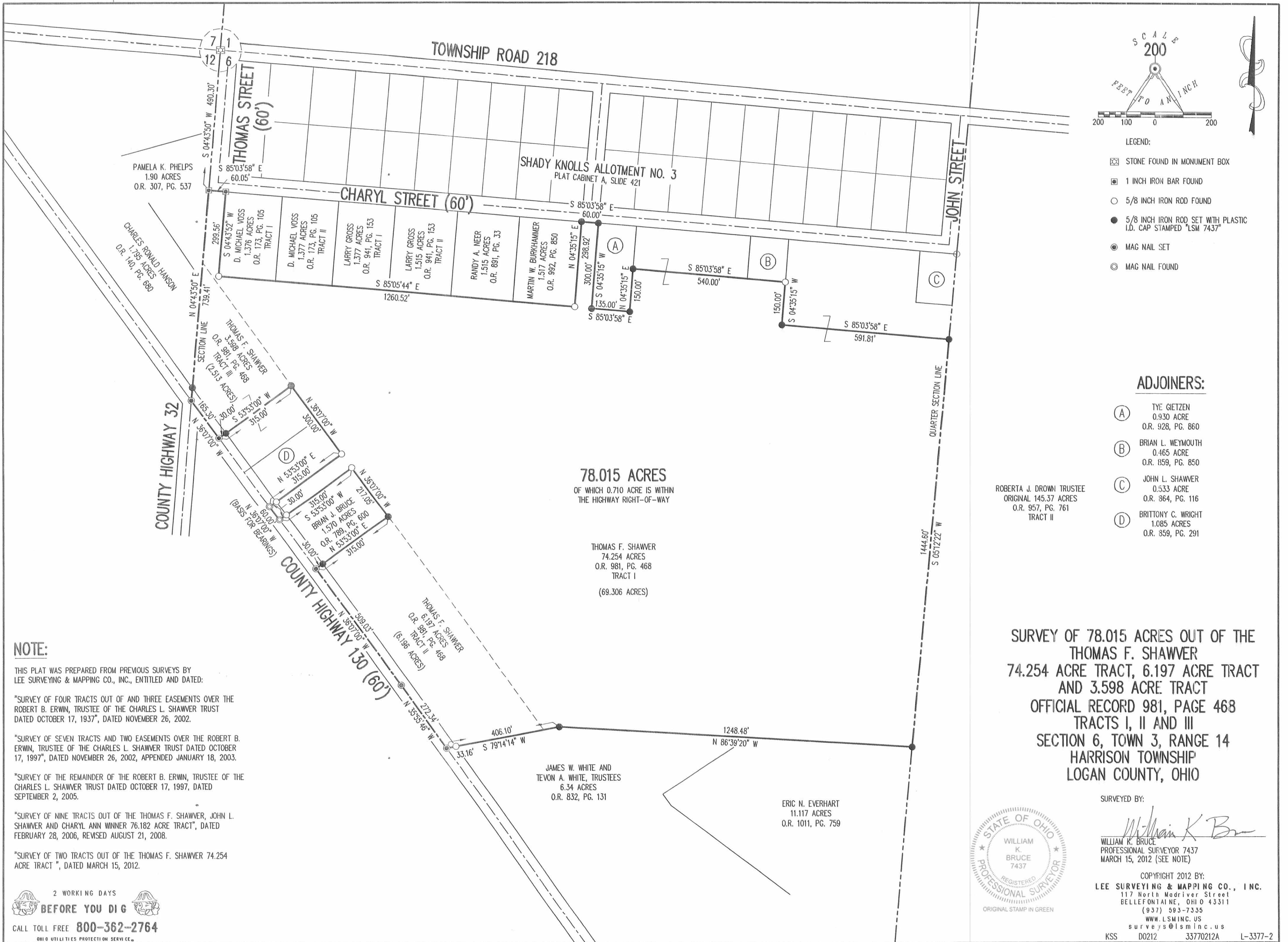
William K. Bruce

William K. Bruce
Professional Surveyor 7437
March 21, 2012



33770212A

REV'D 3-24-12 JMY OR



NOTE:

THIS PLAT WAS PREPARED FROM PREVIOUS SURVEYS BY LEE SURVEYING & MAPPING CO., INC., ENTITLED AND DATED:

"SURVEY OF FOUR TRACTS OUT OF AND THREE EASEMENTS OVER THE ROBERT B. ERWIN, TRUSTEE OF THE CHARLES L. SHAWVER TRUST DATED OCTOBER 17, 1937", DATED NOVEMBER 26, 2002.

"SURVEY OF SEVEN TRACTS AND TWO EASEMENTS OVER THE ROBERT B. ERWIN, TRUSTEE OF THE CHARLES L. SHAWVER TRUST DATED OCTOBER 17, 1997", DATED NOVEMBER 26, 2002, APPENDED JANUARY 18, 2003.

"SURVEY OF THE REMAINDER OF THE ROBERT B. ERWIN, TRUSTEE OF THE CHARLES L. SHAWVER TRUST DATED OCTOBER 17, 1997, DATED SEPTEMBER 2, 2005.

"SURVEY OF NINE TRACTS OUT OF THE THOMAS F. SHAWVER, JOHN L. SHAWVER AND CHARYL ANN WINNER 76.182 ACRE TRACT", DATED FEBRUARY 28, 2006, REVISED AUGUST 21, 2008.

"SURVEY OF TWO TRACTS OUT OF THE THOMAS F. SHAWVER 74.254 ACRE TRACT", DATED MARCH 15, 2012.

2 WORKING DAYS
BEFORE YOU DIG
CALL TOLL FREE **800-362-2764**
OHIO UTILITIES PROTECTION SERVICE

INDEXED ON MAP
3580 23P

REID 3-26-12 SMY ac

Lee Surveying and Mapping Co., Inc.

Land Surveys • Topography • Subdivisions • Construction Layout

117 N. Madriver St.
Bellefontaine OH 43311



Phone: (937) 593-7335
Fax: (937) 593-7444
surveys@lsminc.us

SHAWVER 3.554 ACRES

Lying in Section 6, Town 3, Range 14, Harrison Township, Logan County, Ohio.

Being out of the Thomas F. Shawver 74.254 acre tract as deeded and described in Official record 981, Page 468, Tract I of the Logan County Records of Deeds and being more particularly described as follows:

Commencing on a 5/8 inch iron rod found on the southeast corner of Shady Knolls Allotment No. 3 (Plat Cabinet A, Slide 421) on the intersection of the south right-of-way of Charyl Street and the east right-of-way of John Street.

THENCE, with the south right-of-way of Charyl Street (60 feet wide) and the north line of the John L. Shawver 0.533 acre tract (O.R. 864, Pg. 116), N 85°-03'-58"W, a distance of 130.05 feet to a 5/8 inch iron rod found at the TRUE POINT OF BEGINNING.

THENCE, with the lines of the said 0.533 acre tract, the following two courses:

S 04°-35'-15"W, a distance of 180.00 feet to a 5/8 inch iron rod found.

S 85°-03'-58"E, a distance of 128.10 feet to a 5/8 inch iron rod found.

THENCE, with the west line of the Roberta J. Drown Trustee original 145.37 acre tract (O.R. 957, Pg. 761, Tract II), S 05°-12'-22"W, a distance of 120.00 feet to a 5/8 inch iron rod set.

THENCE, N 85°-03'-58"W, a distance of 591.81 feet to a 5/8 inch iron rod set.

THENCE, with east line extended and the east line of the Brian L. Weymouth 0.465 acre tract (O.R. 859, Pg. 850), N 04°-35'-15"E, a distance of 300.00 feet to a 5/8 inch iron rod found on the south right-of-way of Charyl Street, passing a 5/8 inch iron rod found at 150.00 feet..

THENCE, with the south right-of-way of Charyl Street, S 85°-03'-58"E, a distance of 465.00 feet to the point of beginning, passing a 5/8 inch iron rod found at 405.00 feet.

Containing 3.554 acres.

Property is subject to any and all previous easements and rights-of-way of record.

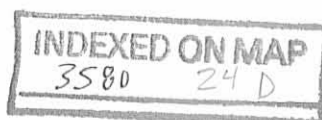
The basis for bearings is the south right-of-way of Charyl Street, being N 85°-03'-58"W, and all other bearings are from angles and distances measured in a field survey by Lee Surveying and Mapping Co., Inc. on March 15, 2012.



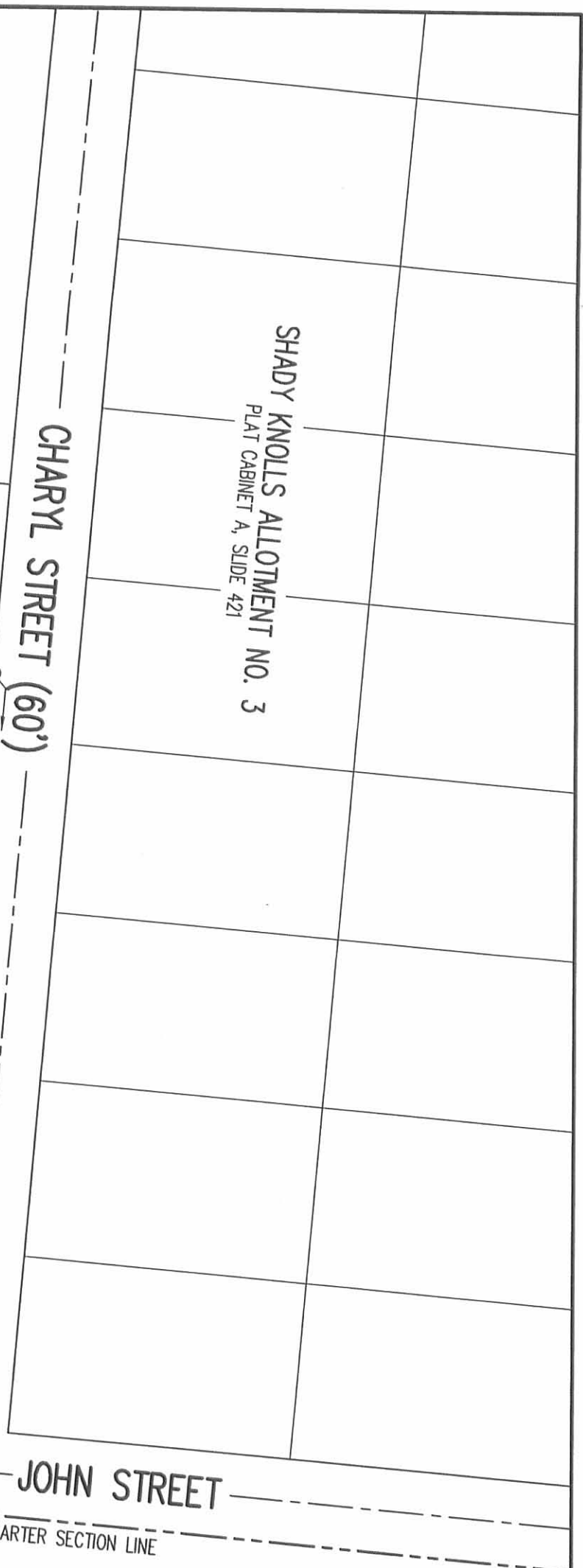
Description prepared by:

William K. Bruce
Professional Surveyor 7437
March 26, 2012

33770212



REV'D 3-24-12 SWM BK



THOMAS F. SHAWVER
74.254 ACRES
O.R. 981, PG. 468
TRACT I

BRIAN L. WEYMOUTH
0.465 ACRE
O.R. 859, PG. 850

3.554 ACRES

JOHN L. SHAWVER
0.533 ACRE
O.R. 864, PG. 116

ROBERTA J. DROWN TRUSTEE
ORIGINAL 145.37 ACRES
O.R. 957, PG. 761
TRACT II

**SURVEY OF 3.554 ACRES OUT OF THE
THOMAS F. SHAWVER
74.254 ACRE TRACT
OFFICIAL RECORD 981, PAGE 468
TRACT I
SECTION 6, TOWN 3, RANGE 14
HARRISON TOWNSHIP
LOGAN COUNTY, OHIO**

SURVEYED BY:

William K. Bruce

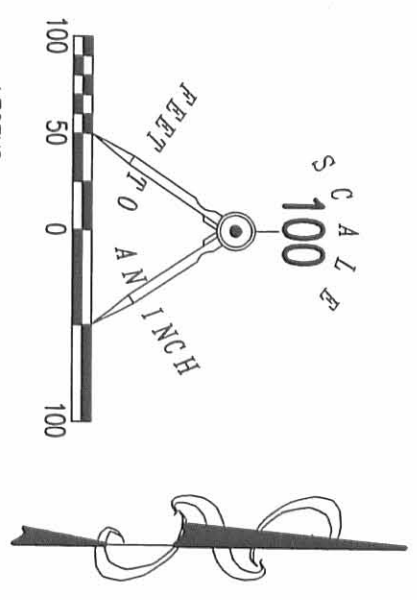
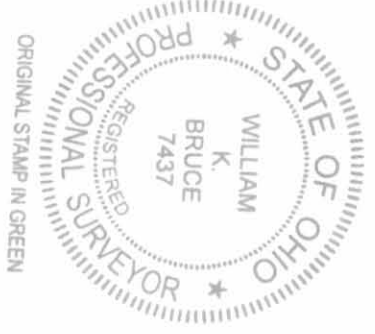
WILLIAM K. BRUCE
PROFESSIONAL SURVEYOR 7437
MARCH 15, 2012
REVISED MARCH 26, 2012

COPYRIGHT 2012 BY:
LEE SURVEYING & MAPPING CO., INC.
117 North Modriver Street
BELLEFONTAINE, OHIO 43311
(937) 593-7335
www.lsmiinc.us
surveys@lsmiinc.us

KSS D0212 33770212 1-3377-3



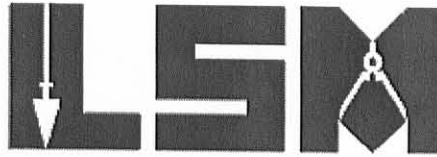
2 WORKING DAYS
CALL TOLL FREE 800-362-2764
OHIO UTILITIES PROTECTION SERVICE



Lee Surveying and Mapping Co., Inc.

Land Surveys • Topography • Subdivisions • Construction Layout

117 N. Madriver St.
Bellefontaine OH 43311



Phone: (937) 593-7335
Fax: (937) 593-7444
surveys@lsmcinc.us

SHAWVER 79.099 ACRES

Lying in Section 6, Town 3, Range 14, Harrison Township, Logan County, Ohio.

Being out of the Thomas F. Shawver 74.254 acre tract and all of the 6.197 acre tract and 3.598 acre tract as deeded and described in Official Record 981, Page 468, Tracts I, II and III of the Logan County Records of Deeds and being more particularly described as follows:

Commencing on a stone found in a monument box on the northwest corner of Section 6 on the center-line of Township Road 218.

THENCE, with the west line of Section 6 and the west right-of-way of Thomas Street (60 feet wide), S 04°-43'-50"W, a distance of 490.30 feet to a 1 inch iron bar found on the south right-of-way of Charyl Street at the TRUE POINT OF BEGINNING.

THENCE, with the south right-of-way of Charyl Street (60 feet wide), S 85°-03'-58"E, a distance of 60.05 feet to a 1 inch iron bar found.

THENCE, with the west line of the D. Michael Voss 1.376 acre tract (O.R. 173, Pg. 105, Tract I), S 04°-43'-52"W, a distance of 299.56 feet to a 5/8 inch iron rod found.

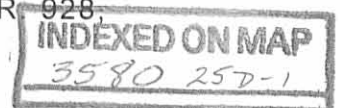
THENCE, with the south lines of the said 1.376 acre tract, the D. Michael Voss 1.377 acre tract (O.R. 173, Pg. 105, Tract II), the Larry Gross 1.377 acre tract and 1.515 acre tract (O.R. 941, Pg. 153, Tract I and Tract II), the Randy A. Neer 1.515 acre tract (O.R. 891, Pg. 33) and the Martin W. Burkhammer 1.517 acre tract (O.R. 992, Pg. 850), S 85°-05'-44"E, a distance of 1260.52 feet to a 5/8 inch iron rod found.

THENCE, with the east line of the said 1.517 acre tract, N 04°-35'-15"E, a distance of 298.92 feet to a 5/8 inch iron rod set on the south right-of-way of Charyl Street.

THENCE, with the south right-of-way of Charyl Street, S 85°-03'-58"E, a distance of 60.00 feet to a 5/8 inch iron rod set.

THENCE, with the lines of the Tye Gietzen 0.930 acre tract (O.R. 928, Pg. 860), the following three courses:

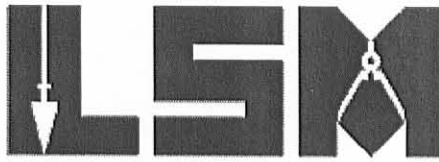
S 04°-35'-15"W, a distance of 300.00 feet to a 5/8 inch iron rod set.



Lee Surveying and Mapping Co., Inc.

Land Surveys • Topography • Subdivisions • Construction Layout

117 N. Madriver St.
Bellefontaine OH 43311



Phone: (937) 593-7335
Fax: (937) 593-7444
surveys@lsminc.us

S 85°-03'-58"E, a distance of 135.00 feet to a 5/8 inch iron rod set.

N 04°-35'-15"E, a distance of 150.00 feet to a 5/8 inch iron rod set.

THENCE, with line extended and with the south line of the Brian L. Weymouth 0.465 acre tract (O.R. 859, Pg. 850), S 85°-03'-58"E, a distance of 540.00 feet to a 5/8 inch iron rod found.

THENCE, S 04°-35'-15"W, a distance of 150.00 feet to a 5/8 inch iron rod set.

THENCE, S 85°-03'-58"E, a distance of 591.81 feet to a 5/8 inch iron rod set on the east line of the northwest quarter of Section 6.

THENCE, with the east line of the northwest quarter of Section 6 and the west line of the Roberta J. Drown Trustee original 145.37 acre tract (O.R. 957, Pg. 761, Tract II), S 05°-12'-22"W, a distance of 1444.60 feet to a 5/8 inch iron rod set.

THENCE, with the north lines of the Eric N. Everhart 11.117 acre tract (O.R. 1011, Pg. 759) and the James W. White and Tevon A. White, Trustees 6.34 acre tract (O.R. 832, Pg. 131), N 86°-39'-20"W, a distance of 1248.48 feet to a 5/8 inch iron rod set.

THENCE, with a northerly line of the said 6.34 acre tract, S 79°-14'-14"W, a distance of 406.10 feet to a MAG nail set on the center-line of County Highway 130, passing a 5/8 inch iron rod found at 372.94 feet.

THENCE, with the center-line of County Highway 130 (60 feet wide), the following two courses:

N 35°-55'-46"W, a distance of 272.34 feet to a MAG nail set.

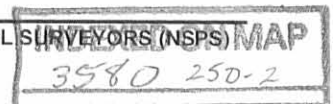
N 36°-07'-00"W, a distance of 509.03 feet to a MAG nail set.

THENCE, with the lines of the Brian J. Bruce 1.570 acre tract (O.R. 789, Pg. 600), the following three courses:

N 53°-53'-00"E, a distance of 315.00 feet to a 5/8 inch iron rod set, passing a 5/8 inch iron rod set at 30.00 feet.

N 36°-07'-00"W, a distance of 217.05 feet to a 5/8 inch iron rod found.

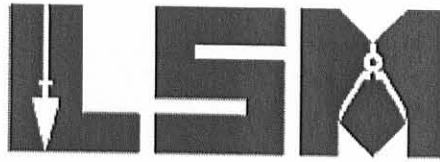
S 53°-53'-00"W, a distance of 315.00 feet to a MAG nail found on the center-line of County Highway 130, passing a 5/8 inch iron rod found at 285.00 feet.



Lee Surveying and Mapping Co., Inc.

Land Surveys • Topography • Subdivisions • Construction Layout

117 N. Madriver St.
Bellefontaine OH 43311



Phone: (937) 593-7335
Fax: (937) 593-7444
surveys@lsminc.us

THENCE, with the center-line of County Highway 130, N 36°-07'-00"W, a distance of 60.00 feet to a MAG nail found.

THENCE, with the lines of the Brittony C. Wright 1.085 acre tract (O.R. 859, Pg. 291), the following three courses:

N 53°-53'-00"E, a distance of 315.00 feet to a 5/8 inch iron rod found, passing a 5/8 inch iron rod found at 30.00 feet.

N 36°-07'-00"W, a distance of 150.00 feet to a 5/8 inch iron rod set.

S 53°-53'-00"W, a distance of 315.00 feet to a MAG nail set on the center-line of County Highway 130, passing a 5/8 inch iron rod set at 285.00 feet.

THENCE, with the center-line of County Highway 130, N 36°-07'-00"W, a distance of 315.30 feet to a MAG nail set on the intersection of the center-line of County Highway 32 on the west line of Section 6.

THENCE, with the west line of Section 6 and the east lines of the Charles Ronald Hanson 1.795 acre tract (O.R. 140, Pg. 680) and the Pamela K. Phelps 1.90 acre tract (O.R. 307, Pg. 537), N 04°-43'-50" E, a distance of 739.41 feet to the point of beginning.

Containing 79.099 acres, of which 0.813 acre is within the highway right-of-way.

Property is subject to any and all previous easements and rights-of-way of record.

The basis for bearings is the center-line of County Highway 130, being N 36°-07'-00"W, and all other bearings are from angles and distances measured in previous field surveys by Lee Surveying and Mapping Co., Inc. The last date of field work being March 15, 2012.

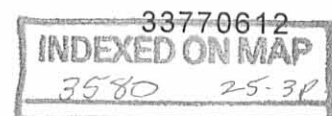


ORIGINAL STAMP IN GREEN

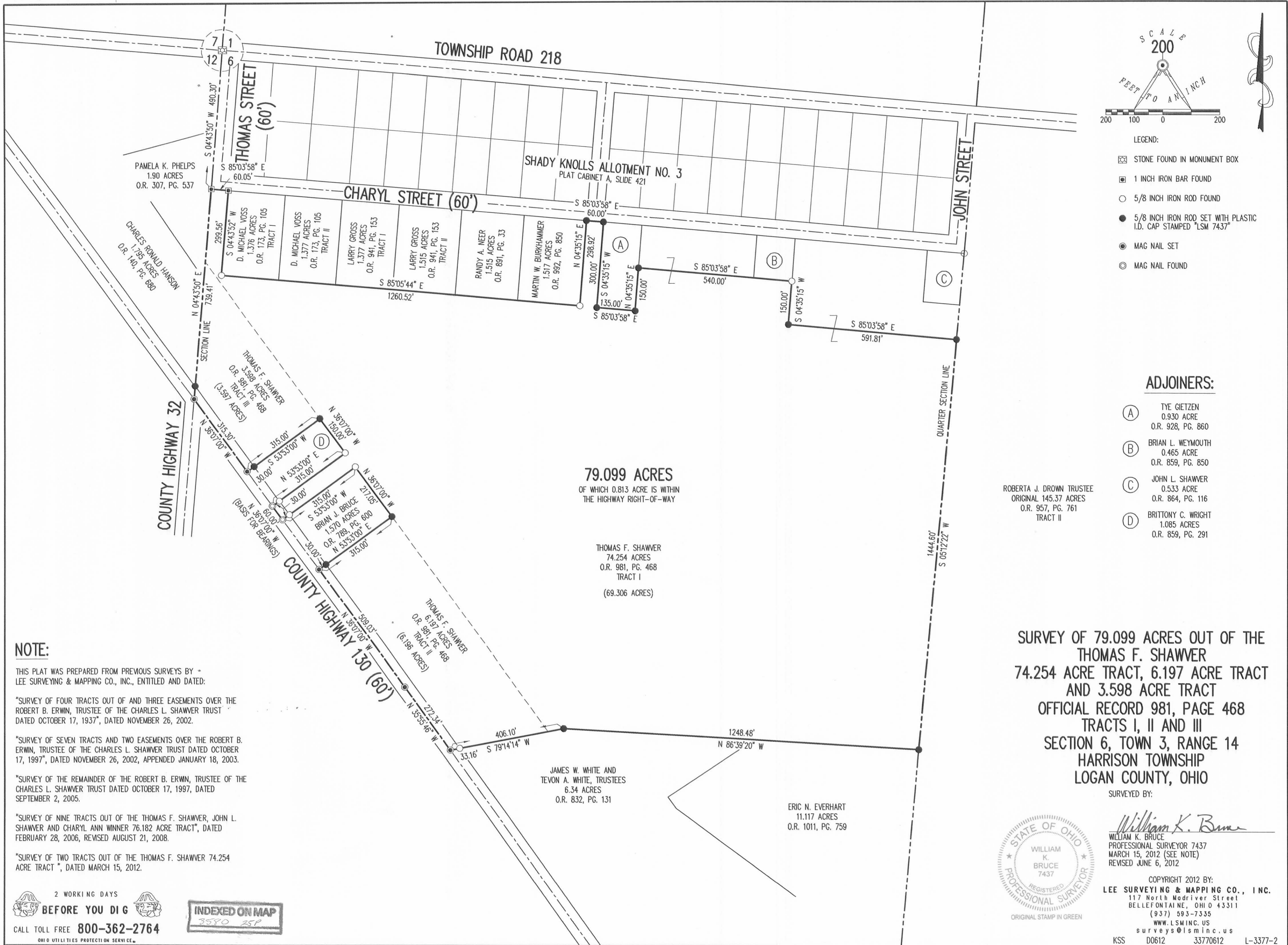
Description prepared by:

William K. Bruce

William K. Bruce
Professional Surveyor 7437
June 6, 2012



REC'D 6-7-12 SMM/OK



NOTE:

THIS PLAT WAS PREPARED FROM PREVIOUS SURVEYS BY * LEE SURVEYING & MAPPING CO., INC., ENTITLED AND DATED:

"SURVEY OF FOUR TRACTS OUT OF AND THREE EASEMENTS OVER THE ROBERT B. ERWIN, TRUSTEE OF THE CHARLES L. SHAWVER TRUST DATED OCTOBER 17, 1937", DATED NOVEMBER 26, 2002.

"SURVEY OF SEVEN TRACTS AND TWO EASEMENTS OVER THE ROBERT B. ERWIN, TRUSTEE OF THE CHARLES L. SHAWVER TRUST DATED OCTOBER 17, 1997", DATED NOVEMBER 26, 2002, APPENDED JANUARY 18, 2003.

"SURVEY OF THE REMAINDER OF THE ROBERT B. ERWIN, TRUSTEE OF THE CHARLES L. SHAWVER TRUST DATED OCTOBER 17, 1997, DATED SEPTEMBER 2, 2005.

"SURVEY OF NINE TRACTS OUT OF THE THOMAS F. SHAWVER, JOHN L. SHAWVER AND CHARYL ANN WINNER 76.182 ACRE TRACT", DATED FEBRUARY 28, 2006, REVISED AUGUST 21, 2008.

"SURVEY OF TWO TRACTS OUT OF THE THOMAS F. SHAWVER 74.254 ACRE TRACT", DATED MARCH 15, 2012.

2 WORKING DAYS
BEFORE YOU DIG
CALL TOLL FREE **800-362-2764**
OHIO UTILITIES PROTECTION SERVICE

INDEXED ON MAP
3580 259



William K. Bruce
WILLIAM K. BRUCE
PROFESSIONAL SURVEYOR 7437
MARCH 15, 2012 (SEE NOTE)
REVISED JUNE 6, 2012

COPYRIGHT 2012 BY:
LEE SURVEYING & MAPPING CO., INC.
117 North Madriver Street
BELLEFONTAINE, OHIO 43311
(937) 593-7335
WWW.LSMINC.US
surveys@lsminc.us
KSS D0612 33770612 L-3377-2

8-18-14

Lee Surveying and Mapping Co., Inc.



Land Surveys • Topography • Subdivisions • Construction Layout

117 N. Madriver St.
Bellefontaine OH 43311



Phone: (937) 593-7335
Fax: (937) 593-7444
surveys@lsminc.us

SHAWVER 0.764 ACRE

Lying in Section 6, Town 3, Range 14, Harrison Township, Logan County, Ohio.

Being out of the John Levi Shawver and Susan R. Shawver 3.554 acre tract as deeded and described in Official Record 1082, Page 314, of the Logan County Records of Deeds and being more particularly described as follows:

Commencing on a 5/8 inch iron rod found on the southeast corner of Shady Knolls Allotment No. 3 (Plat Cabinet A, Slide 421) on the intersection of the south right-of-way of Charyl Street and the east right-of-way of John Street.

THENCE, with the south right-of-way of Charyl Street (60 feet wide) and the north line of the John L. Shawver 0.533 acre tract (O.R. 864, Pg. 116), N 85°-03'-58"W, a distance of 130.05 feet to a 5/8 inch iron rod found at the TRUE POINT OF BEGINNING.

THENCE, with the lines of the said 0.533 acre tract, the following two courses:

S 04°-35'-15"W, a distance of 180.00 feet to a 5/8 inch iron rod found.

S 85°-03'-58"E, a distance of 128.10 feet to a 5/8 inch iron rod found.

THENCE, with the west line of the Roberta J. Drown Trustee original 145.37 acre tract (O.R. 957, Pg. 761, Tract II), S 05°-12'-22"W, a distance of 120.00 feet to a 5/8 inch iron rod found.

THENCE, with a north line of the Seth T. Slemmons 79.099 acre tract (O.R. 1119, Pg. 857), N 85°-03'-58"W, a distance of 186.81 feet to a 5/8 inch iron rod set.

THENCE, N 04°-35'-15"E, a distance of 300.00 feet to a 5/8 inch iron rod found on the south right-of-way of Charyl Street.

THENCE, with the south right-of-way of Charyl Street, S 85°-03'-58"E, a distance of 60.00 feet to the point of beginning.

Containing 0.764 acre.

Property is subject to any and all previous easements and rights-of-way of record.

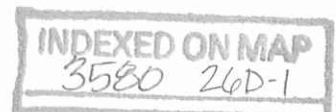
This parcel is to be attached to an adjoining tract of land and is not to be used as a separate and independent parcel.

The basis for bearings is the south right-of-way of Charyl Street, being N 85°-03'-58"W, and all other bearings are from angles and distances measured in a field survey by Lee Surveying and Mapping Co., Inc. on July 31, 2014.



Description prepared by:

William K. Bruce
Professional Surveyor 7437
July 31, 2014



33770714

8-18-14

Lee Surveying and Mapping Co., Inc.

APPROVED Land Surveys • Topography • Subdivisions • Construction Layout

117 N. Madriver St.
Bellefontaine OH 43311



Phone: (937) 593-7335
Fax: (937) 593-7444
surveys@lsminc.us

SHAWVER TRACT A 0.930 ACRE

Lying in Section 6, Town 3, Range 14, Harrison Township, Logan County, Ohio.

Being out of the John Levi Shawver and Susan R. Shawver 3.554 acre tract as deeded and described in Official Record 1082, Page 314, of the Logan County Records of Deeds and being more particularly described as follows:

Commencing on a 5/8 inch iron rod found on the southeast corner of Shady Knolls Allotment No. 3 (Plat Cabinet A, Slide 421) on the intersection of the south right-of-way of Charyl Street and the east right-of-way of John Street.

THENCE, with the south right-of-way of Charyl Street (60 feet wide) and the north line of the John L. Shawver 0.533 acre tract (O.R. 864, Pg. 116), N 85°-03'-58"W, a distance of 130.05 feet to a 5/8 inch iron rod found.

THENCE, with the south right-of-way of Charyl Street, N 85°-03'-58"W, a distance of 330.00 feet to a 5/8 inch iron rod set at the TRUE POINT OF BEGINNING, passing a 5/8 inch iron rod found at 60.00 feet and a 5/8 inch iron rod set at 195.00 feet.

THENCE, S 04°-35'-15"W, a distance of 300.00 feet to a 5/8 inch iron rod set.

THENCE, with a north line of the Seth T. Slemmons 79.099 acre tract (O.R. 1119, Pg. 857), N 85°-03'-58"W, a distance of 135.00 feet to a 5/8 inch iron rod found.

THENCE, with an east line of the said 79.099 acre tract and the east line of the Edward J. Denecke 0.465 acre tract (O.R. 1080, Pg. 576), N 04°-35'-15"E, a distance of 300.00 feet to a 5/8 inch iron rod found on the south right-of-way of Charyl Street, passing a 5/8 inch iron rod found at 150.00 feet.

THENCE, with the south right-of-way of Charyl Street, S 85°-03'-58"E, a distance of 135.00 feet to the point of beginning.

Containing 0.930 acre.

Property is subject to any and all previous easements and rights-of-way of record.

The basis for bearings is the south right-of-way of Charyl Street, being N 85°-03'-58"W, and all other bearings are from angles and distances measured in a field survey by Lee Surveying and Mapping Co., Inc. on July 31, 2014.

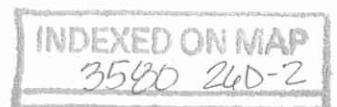


ORIGINAL STAMP IN GREEN

Description prepared by:

A handwritten signature in black ink that reads 'William K. Bruce'.

William K. Bruce
Professional Surveyor 7437
July 31, 2014



33770714

8-18-14

Lee Surveying and Mapping Co., Inc.



Land Surveys • Topography • Subdivisions • Construction Layout

117 N. Madriver St.
Bellefontaine OH 43311



Phone: (937) 593-7335
Fax: (937) 593-7444
surveys@lsminc.us

SHAWVER TRACT B 0.930 ACRE

Lying in Section 6, Town 3, Range 14, Harrison Township, Logan County, Ohio.

Being out of the John Levi Shawver and Susan R. Shawver 3.554 acre tract as deeded and described in Official Record 1082, Page 314, of the Logan County Records of Deeds and being more particularly described as follows:

Commencing on a 5/8 inch iron rod found on the southeast corner of Shady Knolls Allotment No. 3 (Plat Cabinet A, Slide 421) on the intersection of the south right-of-way of Charyl Street and the east right-of-way of John Street.

THENCE, with the south right-of-way of Charyl Street (60 feet wide) and the north line of the John L. Shawver 0.533 acre tract (O.R. 864, Pg. 116), N 85°-03'-58"W, a distance of 130.05 feet to a 5/8 inch iron rod found.

THENCE, with the south right-of-way of Charyl Street, N 85°-03'-58"W, a distance of 195.00 feet to a 5/8 inch iron rod set at the TRUE POINT OF BEGINNING, passing a 5/8 inch iron rod found at 60.00 feet.

THENCE, S 04°-35'-15"W, a distance of 300.00 feet to a 5/8 inch iron rod set.

THENCE, with a north line of the Seth T. Slemmons 79.099 acre tract (O.R. 1119, Pg. 857), N 85°-03'-58"W, a distance of 135.00 feet to a 5/8 inch iron rod set.

THENCE, N 04°-35'-15"E, a distance of 300.00 feet to a 5/8 inch iron rod set on the south right-of-way of Charyl Street.

THENCE, with the south right-of-way of Charyl Street, S 85°-03'-58"E, a distance of 135.00 feet to the point of beginning.

Containing 0.930 acre.

Property is subject to any and all previous easements and rights-of-way of record.

The basis for bearings is the south right-of-way of Charyl Street, being N 85°-03'-58"W, and all other bearings are from angles and distances measured in a field survey by Lee Surveying and Mapping Co., Inc. on July 31, 2014.



ORIGINAL STAMP IN GREEN

Description prepared by:


William K. Bruce
Professional Surveyor 7437
July 31, 2014



33770714

8-18-14

Lee Surveying and Mapping Co., Inc.

 **APPROVED** Land Surveys • Topography • Subdivisions • Construction Layout

117 N. Madriver St.
Bellefontaine OH 43311



Phone: (937) 593-7335
Fax: (937) 593-7444
surveys@lsminc.us

SHAWVER TRACT C 0.930 ACRE

Lying in Section 6, Town 3, Range 14, Harrison Township, Logan County, Ohio.

Being out of the John Levi Shawver and Susan R. Shawver 3.554 acre tract as deeded and described in Official Record 1082, Page 314, of the Logan County Records of Deeds and being more particularly described as follows:

Commencing on a 5/8 inch iron rod found on the southeast corner of Shady Knolls Allotment No. 3 (Plat Cabinet A, Slide 421) on the intersection of the south right-of-way of Charyl Street and the east right-of-way of John Street.

THENCE, with the south right-of-way of Charyl Street (60 feet wide) and the north line of the John L. Shawver 0.533 acre tract (O.R. 864, Pg. 116), N 85°-03'-58"W, a distance of 130.05 feet to a 5/8 inch iron rod found.

THENCE, with the south right-of-way of Charyl Street, N 85°-03'-58"W, a distance of 60.00 feet to a 5/8 inch iron rod found at the TRUE POINT OF BEGINNING.

THENCE, S 04°-35'-15"W, a distance of 300.00 feet to a 5/8 inch iron rod set.

THENCE, with a north line of the Seth T. Slemmons 79.099 acre tract (O.R. 1119, Pg. 857), N 85°-03'-58"W, a distance of 135.00 feet to a 5/8 inch iron rod set.

THENCE, N 04°-35'-15"E, a distance of 300.00 feet to a 5/8 inch iron rod set on the south right-of-way of Charyl Street.

THENCE, with the south right-of-way of Charyl Street, S 85°-03'-58"E, a distance of 135.00 feet to the point of beginning.

Containing 0.930 acre.

Property is subject to any and all previous easements and rights-of-way of record.

The basis for bearings is the south right-of-way of Charyl Street, being N 85°-03'-58"W, and all other bearings are from angles and distances measured in a field survey by Lee Surveying and Mapping Co., Inc. on July 31, 2014.

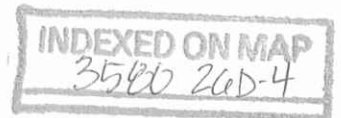


ORIGINAL STAMP IN GREEN

Description prepared by:

William K. Bruce

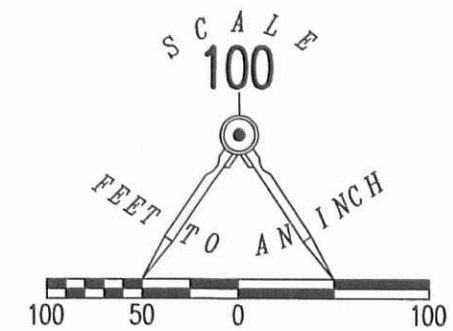
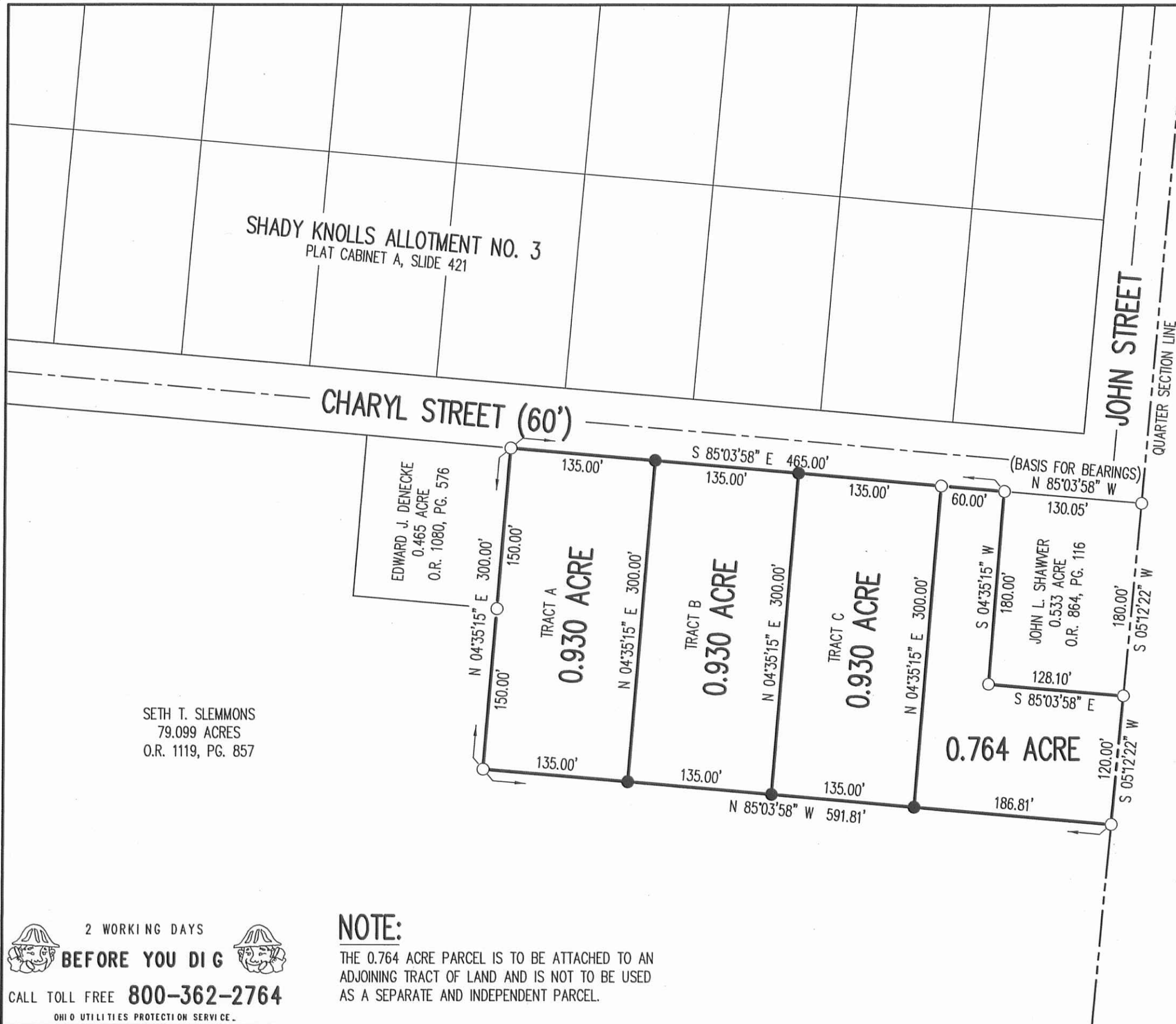
William K. Bruce
Professional Surveyor 7437
July 31, 2014



33770714

8-18-14

APPROVED



LEGEND:
 ○ 5/8 INCH IRON ROD FOUND
 ● 5/8 INCH IRON ROD SET WITH PLASTIC I.D. CAP STAMPED "LSM 7437"

**SURVEY OF FOUR TRACTS OUT OF THE
 JOHN LEVI SHAWVER AND
 SUSAN R. SHAWVER
 3.554 ACRE TRACT
 OFFICIAL RECORD 1082, PAGE 314
 SECTION 6, TOWN 3, RANGE 14
 HARRISON TOWNSHIP
 LOGAN COUNTY, OHIO**

SURVEYED BY:

William K. Bruce
 WILLIAM K. BRUCE

PROFESSIONAL SURVEYOR 7437
 JULY 31, 2014

ROBERTA J. DROWN TRUSTEE
 ORIGINAL 145.37 ACRES
 O.R. 957, PG. 761
 TRACT II



ORIGINAL STAMP IN GREEN

COPYRIGHT 2014 BY:
LEE SURVEYING & MAPPING CO., INC.
 117 North Madriver Street
 BELLEFONTAINE, OHIO 43311
 (937) 593-7335
 WWW.LSMINC.US
 surveys@lsminc.us
 KSS D0714 33770714 L-3377-3

CHARYL STREET (60')

JOHN STREET

QUARTER SECTION LINE

SHADY KNOLLS ALLOTMENT NO. 3
 PLAT CABINET A, SLIDE 421

EDWARD J. DENECKE
 0.465 ACRE
 O.R. 1080, PG. 576

**TRACT A
0.930 ACRE**

**TRACT B
0.930 ACRE**

**TRACT C
0.930 ACRE**

0.764 ACRE

JOHN L. SHAWVER
 0.533 ACRE
 O.R. 864, PG. 116

SETH T. SLEMMONS
 79.099 ACRES
 O.R. 1119, PG. 857

2 WORKING DAYS
BEFORE YOU DIG
 CALL TOLL FREE **800-362-2764**
 OHIO UTILITIES PROTECTION SERVICE.

NOTE:
 THE 0.764 ACRE PARCEL IS TO BE ATTACHED TO AN
 ADJOINING TRACT OF LAND AND IS NOT TO BE USED
 AS A SEPARATE AND INDEPENDENT PARCEL.

INDEXED ON MAP
 3540 26P

9-25-19



APPROVED



INNOVATIVE IDEAS
EXCEPTIONAL DESIGN
UNMATCHED CLIENT SERVICE

SHAWVER

0.207 ACRE

Lying in Section 6, Town 3, Range 14, Between the Miami Rivers Survey, Harrison Township, Logan County, Ohio (all records referenced herein refer to the Logan County Records of Deeds).

Being out of the John Levi Shawver (1/2 interest) and Susan R. Shawver (1/2 interest) 3.554 acre tract as deeded and described in Official Record 1082, Page 314 and being more particularly described as follows:

COMMENCING at a 5/8 inch iron rod found at the intersection of the south right-of-way line of Charyl Street (60 feet wide) and the east right-of-way line of John Street (60 feet wide), also being on the east line of the northwest quarter of said Section 6;

THENCE, with said right-of-way line of Charyl Street, N 85°-03'-58" W, passing a 5/8 inch iron rod found at a distance of 129.92 feet, a total distance of 159.92 feet to an iron rod set at the **TRUE POINT OF BEGINNING**;

THENCE, with a new division line through said 3.554 acre tract, **S 04°-35'-15" W**, a distance of **300.00 feet** to an iron rod set on the north line of the Umang Victor Nanda and Tracy Lynn Nanda 79.099 acre tract as deeded and described in Official Record 1221, Page 247;

THENCE, with a common line to said 3.554 acre and 79.099 acre tracts, **N 85°-03'-58" W**, a distance of **30.00 feet** to a 5/8 inch iron rod found (I.D. cap stamped "LSM 7437");

THENCE, with a new division line through said 3.554 acre tract, **N 04°-35'-14" E**, a distance of **300.00 feet** to a 5/8 inch iron rod found on said south right-of-way line of Charyl Street;

THENCE, with said right-of-way line, **S 85°-03'-58" E**, a distance of **30.00 feet** to the **POINT OF BEGINNING**.

INDEXED ON MAP
3580



INNOVATIVE IDEAS
EXCEPTIONAL DESIGN
UNMATCHED CLIENT SERVICE

Containing **0.207 acre**, more or less.

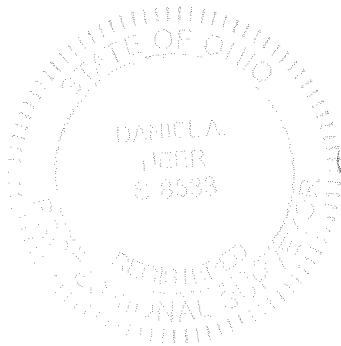
Iron rods set, where indicated, are 30 inches in length, 5/8 inch in diameter with a plastic I.D. cap stamped "DLZ OHIO, INC".

This parcel is to be attached to an adjoining tract of land and is not to be used as a separate and independent parcel.

Property is subject to any and all previous easements and rights-of-way of record.

The basis for bearings described herein, are based on the south right-of-way line of Charyl Street, having a bearing of N 85°-03'-58" W. Distances are expressed in U.S. Survey Feet. All other measurements are from angles and distances measured in a field survey by DLZ on September 11, 2019.

Description prepared by:



Daniel A. Neer
Daniel A. Neer

Professional Surveyor No. 8533

September 20, 2019

1921-2069.00

INDEXED ON MAP
3580

9-25-19

APPROVED

DEED & SURVEY REFERENCES:

REFERENCE DEEDS ARE SHOWN HEREON

SURVEY BY WILLIAM K. BRUCE, P.S. 7437,
ENTITLED "SURVEY OF FOUR TRACTS OUT
OF THE JOHN LEVI SHAWVER AND SUSAN
R. SHAWVER 3.554 ACRE TRACT", DATED
JULY 31, 2014
LOGAN COUNTY ENGINEER'S MAP ROOM FILE 3580

NOTE:

THIS PARCEL IS TO BE ATTACHED TO AN ADJOINING TRACT
OF LAND AND IS NOT TO BE USED AS A SEPARATE AND
INDEPENDENT PARCEL.

JOHN LEVI SHAWVER (1/2 INTEREST) AND
SUSAN R. SHAWVER (1/2 INTEREST)
3.554 ACRES
O.R. 1082, PG. 314

OCCUPATION NOTE:

NO EVIDENCE OF OCCUPATION ALONG
BOUNDARY LINES UNLESS OTHERWISE SHOWN

BASIS FOR BEARINGS:

THE BASIS FOR BEARINGS, SHOWN HEREON,
IS THE SOUTH RIGHT-OF-WAY LINE OF
CHARYL STREET, TAKEN FROM SURVEY
REFERENCED, BEING N 85°-03'-58" W.

THIS SURVEY WAS PREPARED IN THE
ABSENCE OF A COMPLETE AND ACCURATE
TITLE SEARCH AND DOES NOT GUARANTEE
TITLE.

UMANG VICTOR NANDA AND
TRACY LYNN NANDA
79.099 ACRES
O.R. 1221, PG. 247

(I.D. CAP STAMPED
"LSM 7437")

(I.D. CAP STAMPED
"LSM 7437")

0.207 ACRE

N 04°35'14" E

300.00'

300.00'

S 04°35'15" W

S 85°03'58" E

30.00'

30.00'

(BASIS FOR BEARINGS)
N 85°03'58" W 159.92'

N 85°03'58" W

135.00'

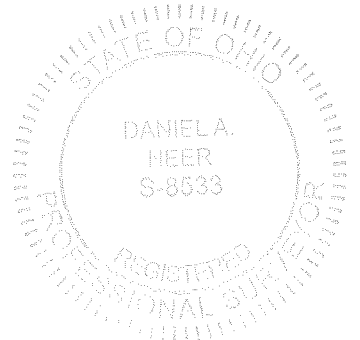
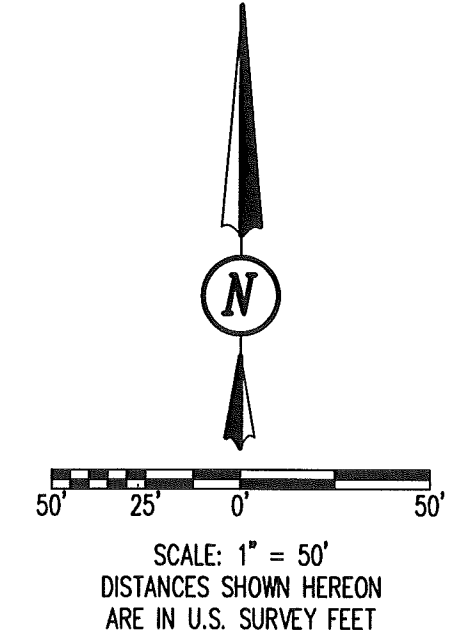
CHARYL STREET (60')

JOHN STREET (60')

P.O.B.

P.O.C.

EAST LINE OF NORTHWEST QUARTER OF SECTION 6



D. Neer
DANIEL A. NEER
PROFESSIONAL SURVEYOR NO. 8533
SEPTEMBER 11, 2019

COPYRIGHT 2019 BY:
DLZ
117 N. Madriver Street • Bellefontaine, OH 43311
(937) 593-7335 • www.dlz.com
Project #1921-2069.00

LEGEND	
○ 5/8 INCH IRON ROD FOUND	P.O.B. = POINT OF BEGINNING
● 5/8 INCH BY 30 INCH IRON ROD SET WITH PLASTIC I.D. CAP STAMPED "DLZ OHIO, INC"	R/W = RIGHT-OF-WAY
	C/L = CENTER-LINE
	P.O.C. = POINT OF COMMENCEMENT

BOUNDARY SURVEY
SECTION 6, TOWN 3, RANGE 14
BETWEEN THE MIAMI RIVERS SURVEY
HARRISON TOWNSHIP
LOGAN COUNTY, OHIO

DRAWN BY:	DESCRIPTION	REV. NO.	DATE
KSS			9/18/2019

INDEXED ON MAP
3580