

FB 700

Proposed Relocation
 C.H. No. 56
 P.I. Sta. 126+56

E Curve Data

$\Delta = 19^{\circ}-29'$

$D = 10^{\circ}-00'$

$R = 673.69'$

$T = 99.70'$

$L = 197.30'$

West R/W Curve Data

$\Delta = 19^{\circ}-44'$

$D = 9^{\circ}-07.6'$

$R = 628.82'$

$T = 109.37'$

$L = 216.19'$

East R/W Curve Data

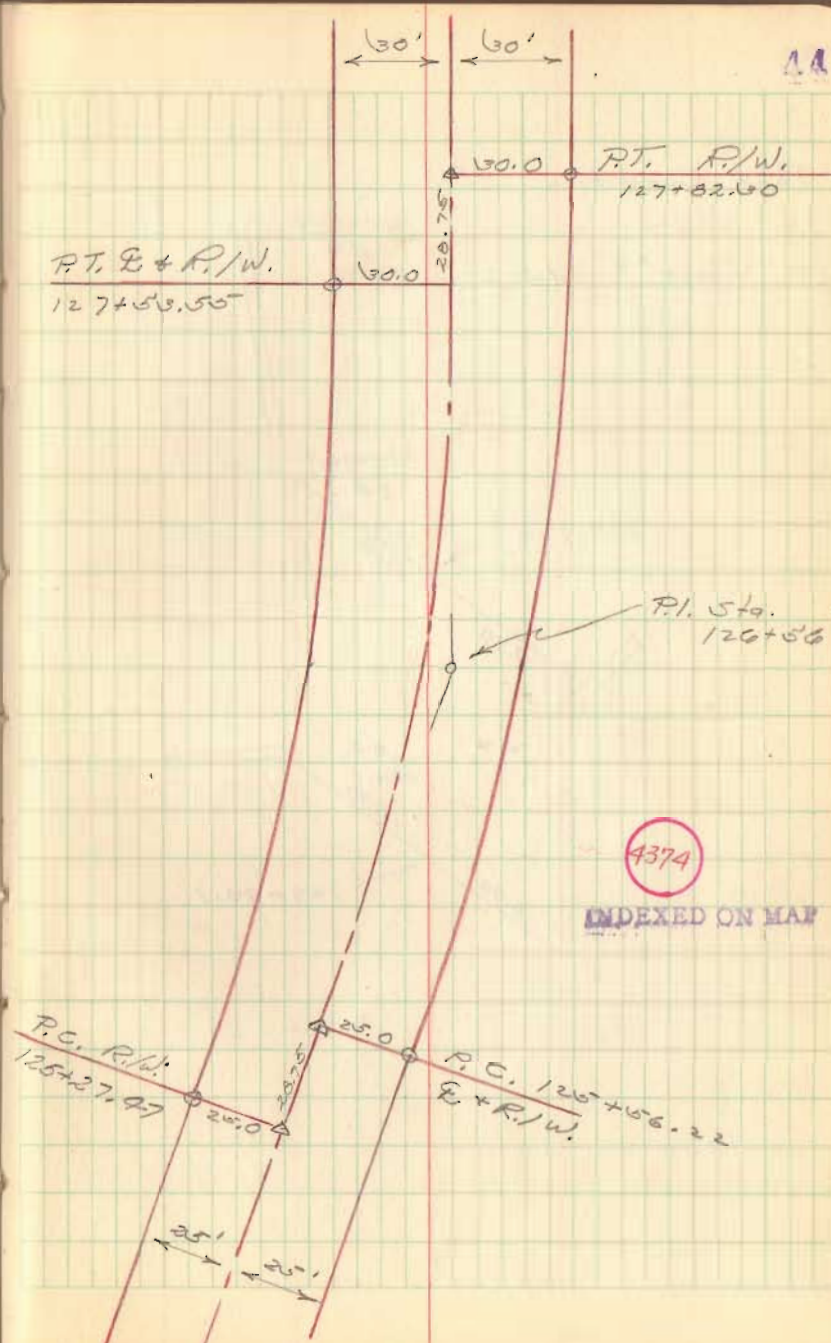
$\Delta = 19^{\circ}-44'$

$D = 8^{\circ}-23.1'$

$R = 683.84'$

$T = 118.94'$

$L = 235.64'$



FB 700

C. H. #56
Harrison Twp.
Fence Lt. sta. Fenc. Rt.

No R/W Fence

132+00 Mon. Hub Set

127+82.30 P.T. R/W Mon. Rt.

127+56.22 P.T. E

127+53.55 P.T. R/W Mon. Lt.

125+56.22 P.C. E. Mon. Rt.

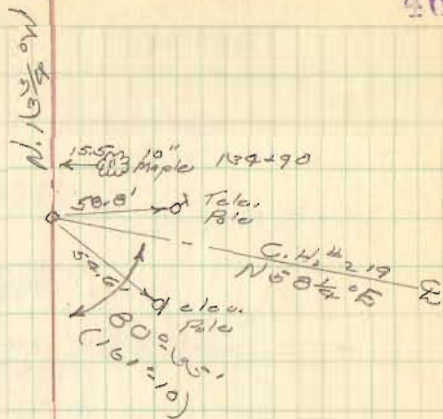
125+27.47 P.C. R/W Mon. Lt.

Dodson
Tavis
Gilbert

April 15, 1947
60°

46

P.I. Angle
Iron found
Sta. 130+73.9
0°-24' Rt



~~E Drive~~
~~E Drive~~

P.I. iron found
Sta. 126+56
19°-44' Lt.

E Curve Data
 $\Delta = 192.44'$
 $D = 10200'$
 $R = 570.69'$
 $T = 99.78'$
 $L = 197.33'$

FB 700

C. H. # 56
 Fence Sta. Fence
 Left Right

22.2' 192+00

22.9' 191+00

End of
Fence 138+70

17.8 138+00

17.6 137+00

17.6 135+69

135+00

Mon
Hicks

Set

47

192+02 18"
23.1 Elm192+30 12"
20.2 Elm192+92 8"
22.7 Elm192+01 12"
27.2 Elm20"
Walnut 192+00
20.3191+97 10"
20.5 Elm30"
Maple 191+03
19.9182+03 10"
18.2 Elm22' Ash 160
22.1192+52.6
x x x x x 0.22.522"
Maple 192+05
29.620'
Maple 190+25
29.420'
Maple 194+92
29.418"
Maple 194-67
29.718'
Maple 194-60
29.810'
Maple 137+05
29.2

15' DRIVE 138+89

22"
Maple 138+80
x x x x x 29.7135+69
x x x x x 0.19.219.2
18' Ash
192+00

FB 700

Fence
Lts. Sta. Fence
Rt.

151+00 Mon. Hubs set 18.9 151+00 18.7

149+00 Mon.

145+98.1 Mon 40' W. & R. Hubs set 19.5 145+98.1 21.5

20.5 145+00 20.2

144+00 Mon

143+00 Mon. Hubs set

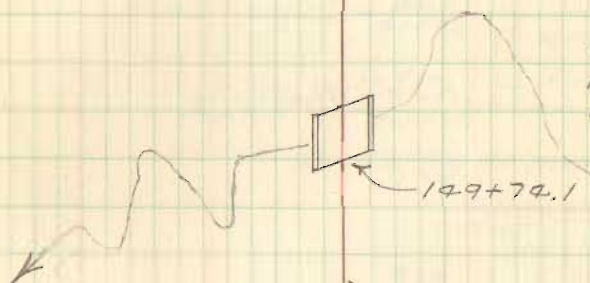
20.0 143+00

Dodson
Gilbert
Tadros

April 25, 1957
Cloudy

48

150+66



N. 34° 1' W

Stone Found
Sta. 145+98.1
0°-46' Lt.

20' Apple 145+98
17.6

20' Maple 145+02
18.0

30' Maple 144+83
17.8

143+00 143+00 R

143+00
23.6

142+94 8" V.V.P.

FB 700

Fence left sta. Fence Right

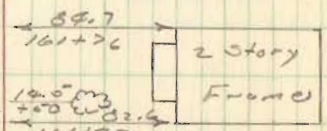
Sta.	Mon Hubs set	Fence left	sta.	Fence Right
161+00		13.0	162+00	14.5
161+00	Mon Hubs set	11.5	161+00	14.6
165+00	Mon Hubs set			

49

29.9' 1/10" Cedar
 11.6
 19.6 5/3 29" Oak
 +09
 29.9 1/10" Cedar
 +76.7
 18.0 mg 1/6" dbl. Walnut
 +50.0
 25.7 1/8" Cedar
 +10.7

18" 12.9
 Hot berry 1/2" 100
 15" 13.1
 Maple 1/3 796

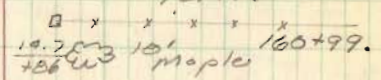
25.0 1/8" Cedar
 161+00.1



20" 12.8
 Maple 1/3 790

12.6 mg 18" Maple
 +31

15' Drive to house
 161+15



18" 12.6 12.9 mg 18" Maple
 Maple 1/3 790 160+65

14.5' mg 18" Maple
 160+9.5

[B.M.]

24" 12.1
 Maple 1/3 785



29' 24.1
 Maple 1/3 789.2
 150+78
 20' Drive

9.0' fwin 29" C.M.P.
 Sta. 156+28.6

FB 700

Fence
Left

Sta.

Fence
Right

171+80 Hubs Set

End of
Fence

168+91.5

End of
Fence

166+00 Hubs Set

19.5

166+00

19.9

April 25, 1957

50

