

ELLIOTT SURVEY .

July, 1971

The following described real estate situated in Harrison Township, Logan County, Ohio and being part of the Northeast 1/4 of Section 5, Town 3, Range 14 and being more particularly described as follows:

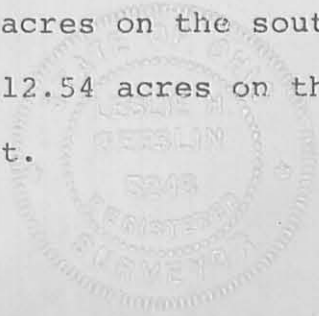
Beginning at an iron bar in the east right-of-way line of the C.C.C. & St. L. Railroad at the northwest corner of Levi Shick's 25.42 acre tract; thence with said right-of-way line N. 38°57' W. 151.7 feet to an iron bar; thence N. 65°16' E. 472.5 feet to an iron bar; thence N. 58°06.6' E. 850.0 feet to an iron bar in the center of C. H. 130; thence with said County Highway 130 S. 32°41' E. 288.8 feet to the northeast corner of J. P. Hunt and Son's 1.25 acre tract; thence with the north line of said 1.25 acre tract S. 74°56' W. 161.7 feet to an iron bar at the northwest corner of said 1.25 acre tract, passing an iron bar at 31.4 feet; thence with the west line of said 1.25 acre tract S. 32°41' E. 353.4 feet to an iron bar at the southwest corner of said 1.25 acre tract; thence with the south line of said 1.25 acre tract N. 74°56' E. 161.7 feet to the southeast corner of said 1.25 acre tract in the center of County Highway 130; thence with said County Highway 130 S. 32°41' E. 320.8 feet to northeast corner of The Hi-Lo Oil Companys 0.60 acre tract; thence with the north line of said 0.60 acre tract and the north line of Levi Shick's 25.42 acre tract N. 88°20' W. 1576.2 feet to the place of beginning, passing an iron pipe at 60.54 feet.

Containing 14.83 acres more or less.

The above described 14.83 acres being 2.29 acres on the south side of Lewis E. Elliott's 17.22 acre tract and 12.54 acres on the south side of Lewis E. Elliott's 26.51 acre tract.

4921 ID

INDEXED ON MAP





St. L. R.R.
C.C. & P.W. LINE
N 38° 57' W.
151.7'

N 65° 16' E.
472.5'

N 58° 06.6' E.
850.0

14.83 AC.

N 88° 20' W.
1576.2'

LEVI SHICK
35.42 AC

574° 56' W.
161.7'
532° 41' E.
161.7'
N 74° 56' E.
161.7'
J.P. HUNT
1.25 AC.

GR 130 (60')
288.8'
532° 41' E.
320.8'
Hi-lo On Co
D. 60 AC

O = IRON
SCALE 1" = 200'

ELLIOTT SURVEY
JULY 1971
SEC. 5 T. 3 R. 14
HARRISON TOWNSHIP
LOGAN COUNTY, OHIO

4921 IP

INDEXED ON MAP

LESLIE H. GEEGLIN
REG SURVEYOR 5248