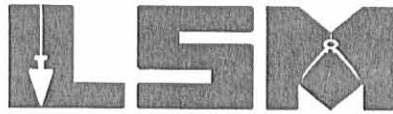


Lee Surveying and Mapping Co., Inc.

Land Surveys • Topography • Subdivisions • Construction Layout

117 N. Madriver St.
Bellefontaine OH 43311



Phone: (937) 593-7335
Fax: (937) 593-7444

EWING 51.731 ACRES

Lying in Section 9, Town 3, Range 14, Harrison Township, Loan County, Ohio.

Being out of the Thomas J. Ewing original 62-1/2 acre tract and 14.78 acre tract as deeded and described in Official Record 233, Page 671, Tract II and Tract III of the Logan County Records of Deeds and being more particularly described as follow:

Beginning at a stone found in a monument box on the southeast corner of Section 9 on the south line of Harrison Township at the intersection of the center-lines of Township Road 200 and Township Road 32.

THENCE, with the east line of Section 9 and the center-line of Township Road 32 (varied width), N 5°-20'-00" E, a distance of 637.24 feet to a railroad spike found at the TRUE POINT OF BEGINNING.

THENCE, with the north line of the Pamela J. Bosetti 16.04 acre tract (O.R. 548, Pg. 753), N 79°-30'-13" W, a distance of 1028.49 feet to a 3/4 inch iron rod found, passing a 5/8 inch iron rod set at 30.24 feet.

THENCE, with the east line of the George Hanson Deal 95.76 acre tract (O.R. 349, Pg. 354) and the east line of the Thelma Joy Downing Matthews 16.55 acre tract (O.R. 464, Pg. 601, Tract III), N 5°-31'-10" E, a distance of 2720.66 feet to a railroad spike found, passing a 5/8 inch iron rod set at 2693.47 feet.

THENCE, with the center-line of Township Road 204 (50 feet wide), S 61°-19'-38" E, a distance of 20.56 feet to a railroad spike found.

THENCE, with the center-line of Township Road 204, S 74°-54'-42" E, a distance of 31.46 feet to a railroad spike found.

THENCE, with the west line of the Larry D. Rose 0.63 acre tract (O.R. 526, Pg. 60), S 5°-44'-18" W, a distance of 202.70 feet to a 5/8 inch iron rod set, passing a 5/8 inch iron rod set at 25.35 feet.

THENCE, with the south lines of the said 0.63 acre tract, the Jesse J. Meadows 0.64 acre tract (Vol. 369, Pg. 801), the Nancy Evans-Donley 0.64 acre tract (O.R. 405, Pg. 123), the Charles M. Feasel 0.64 acre tract (Vol. 360, Pg. 913), the Roger D. Evans 0.64 acre tract (O.R. 336, Pg. 700), and the Betty J. Smith 0.64 acre tract (Vol. 388, Pg. 602), S 74°-52'-56" E, a distance of 790.38 feet to a 3/4 inch iron rod found.

THENCE, with the west lines of the Steven J. Forster 1.04 acre tract (O.R. 538, Pg. 340), the Wayne H. Linkinhoker 0.96 acre tract (O.R. 163, Pg. 827), the Timothy J. Ewing 0.64 acre tract (Vol. 341, Pg. 458) and the Rebecca R. Tanger 0.64 acre tract (O.R. 162, Pg. 17), S 5°-50'-00" W, a distance of 732.75 feet to a 5/8 inch iron rod set.

THENCE, with the south line of the said Tanger 0.64 acre tract, S 84°-10'-00" E, a distance of 200.00 feet to a railroad spike found, passing a 5/8 inch iron rod set at 170.00 feet.

THENCE, with the east line of Section 9 and the center-line of Township Road 32, S 5°-50'-13" W, a distance of 624.47 feet to a MAG nail set.

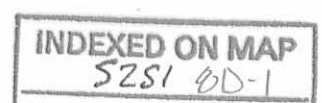
THENCE, S 80°-28'-44" W, a distance of 257.43 feet to a 5/8 inch iron rod set, passing a 5/8 inch iron rod set at 31.11 feet.

THENCE, S 4°-02'-45" E, a distance of 28.09 feet to a 5/8 inch iron rod set.

THENCE, with the lines of the Fred W. McColloch 2.22 acre tract (Vol. 404, Pg. 647), the following four (4) courses:

S 82°-32'-06" W, a distance of 197.13 feet to a 3/4 inch iron rod found;

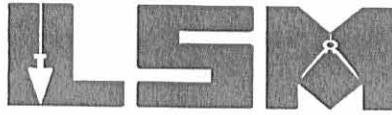
S 52°-06'-18" W, a distance of 93.35 feet to a 1-1/4 inch "T" post found;



Lee Surveying and Mapping Co., Inc.

Land Surveys • Topography • Subdivisions • Construction Layout

117 N. Madriver St.
Bellefontaine OH 43311



Phone: (937) 593-7335
Fax: (937) 593-7444

S 6°-05'-00" W, a distance of 154.68 feet to a 3/4 inch iron rod found;

S 82°-27'-36" E, a distance of 506.82 feet to a railroad spike found, passing a 5/8 inch iron rod set at 476.82 feet.

THENCE, with the east line of Section 9 and the center-line of Township Road 32,
S 5°-20'-00" W, a distance of 728.28 feet to the point of beginning.

Containing 51.731 acres, of which 0.783 acre is within the highway right-of-way.

The basis for bearings is the east line of Section 9, being N 5°-20'-00" E, and all other bearings are from angles and distances measured in a field survey by Lee Surveying and Mapping Co., Inc. on August 22, 2002.

Description prepared by:

A handwritten signature in black ink, appearing to read 'Jeffrey I. Lee', is written over the typed name.

Jeffrey I. Lee
Professional Surveyor 6359
September 20, 2002

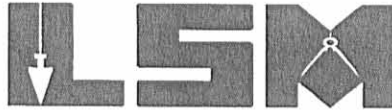


INDEXED ON MAP
5281 9D-2

Lee Surveying and Mapping Co., Inc.

Land Surveys • Topography • Subdivisions • Construction Layout

117 N. Madriver St.
Bellefontaine OH 43311



Phone: (937) 593-7335
Fax: (937) 593-7444

EWING 1.069 ACRES

Lying in Section 9, Town 3, Range 14, Harrison Township, Loan County, Ohio.

Being out of the Thomas J. Ewing original 62-1/2 acre tract as deeded and described in Official Record 233, Page 671, Tract II of the Logan County Records of Deeds and being more particularly described as follow:

Beginning at a stone found in a monument box on the southeast corner of Section 9 on the south line of Harrison Township at the intersection of the center-lines of Township Road 200 and Township Road 32.

THENCE, with the east line of Section 9 and the center-line of Township Road 32, N 5°-20'-00" E, a distance of 1519.12 feet to a railroad spike found at the TRUE POINT OF BEGINNING.

THENCE, with the lines of the Fred W. McColloch 2.22 acre tract (Vol. 404, Pg. 647), the following two (2) courses:

N 88°-20'-30" W, a distance of 221.11 feet to a 5/8 inch iron rod found, passing a 5/8 inch iron rod found at 30.10 feet;

N 4°-02'-45" W, a distance of 172.38 feet to a 5/8 inch iron rod set.

THENCE, N 80°-28'-44" E, a distance of 257.43 feet to a MAG nail set, passing a 5/8 inch iron rod set at 226.32 feet.

THENCE, with the east line of Section 9 and the center-line of Township Road 32, (60 feet wide), S 5°-50'-13" W, a distance of 9.50 feet to a 3/4 inch iron rod found.

THENCE, with the east line of Section 9 and the center-line of Township Road 32, S 5°-20'-00" W, a distance of 212.40 feet to the point of beginning.

Containing 1.069 acres, of which 0.147 acre is within the highway right-of-way.

The basis for bearings is the east line of Section 9, being N 5°-20'-00" E, and all other bearings are from angles and distances measured in a field survey by Lee Surveying and Mapping Co., Inc. on August 22, 2002.

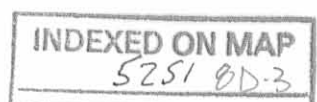
Description prepared by:

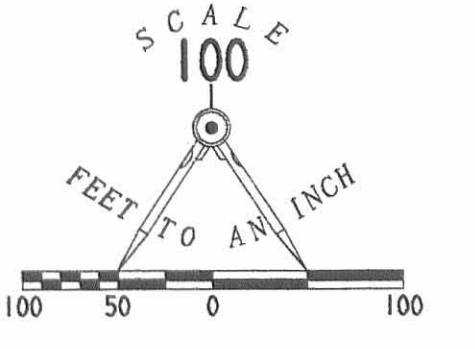
A handwritten signature in black ink, appearing to read 'Jeffrey I. Lee', is written over the typed name and title.

Jeffrey I. Lee
Professional Surveyor 6359
September 20, 2002



L-3404



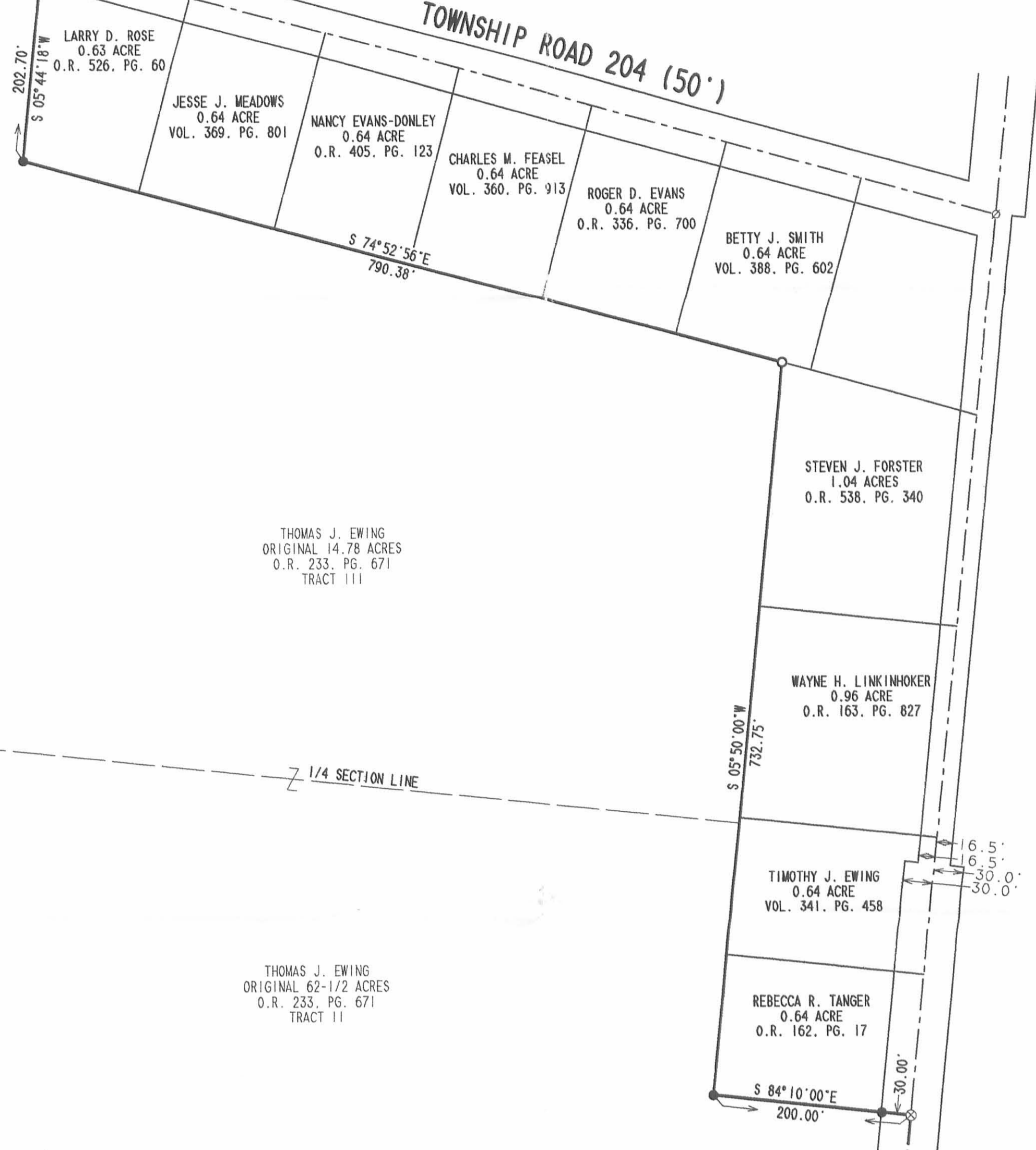


- LEGEND**
- 5/8 INCH IRON ROD SET
 - 5/8 INCH IRON ROD FOUND
 - 3/4 INCH IRON ROD FOUND
 - 1 INCH IRON ROD FOUND
 - ⊕ 1-1/4 INCH "T" POST FOUND
 - MAG NAIL SET
 - ⊗ RAILROAD SPIKE FOUND
 - ⊠ STONE FOUND IN A MONUMENT BOX

THELMA JOY DOWNING MATTHEWS
16.55 ACRES
O.R. 464, PG. 601
TRACT III

20.56'
S 61°19'38"E
31.46'
S 74°54'42"E
25.35'

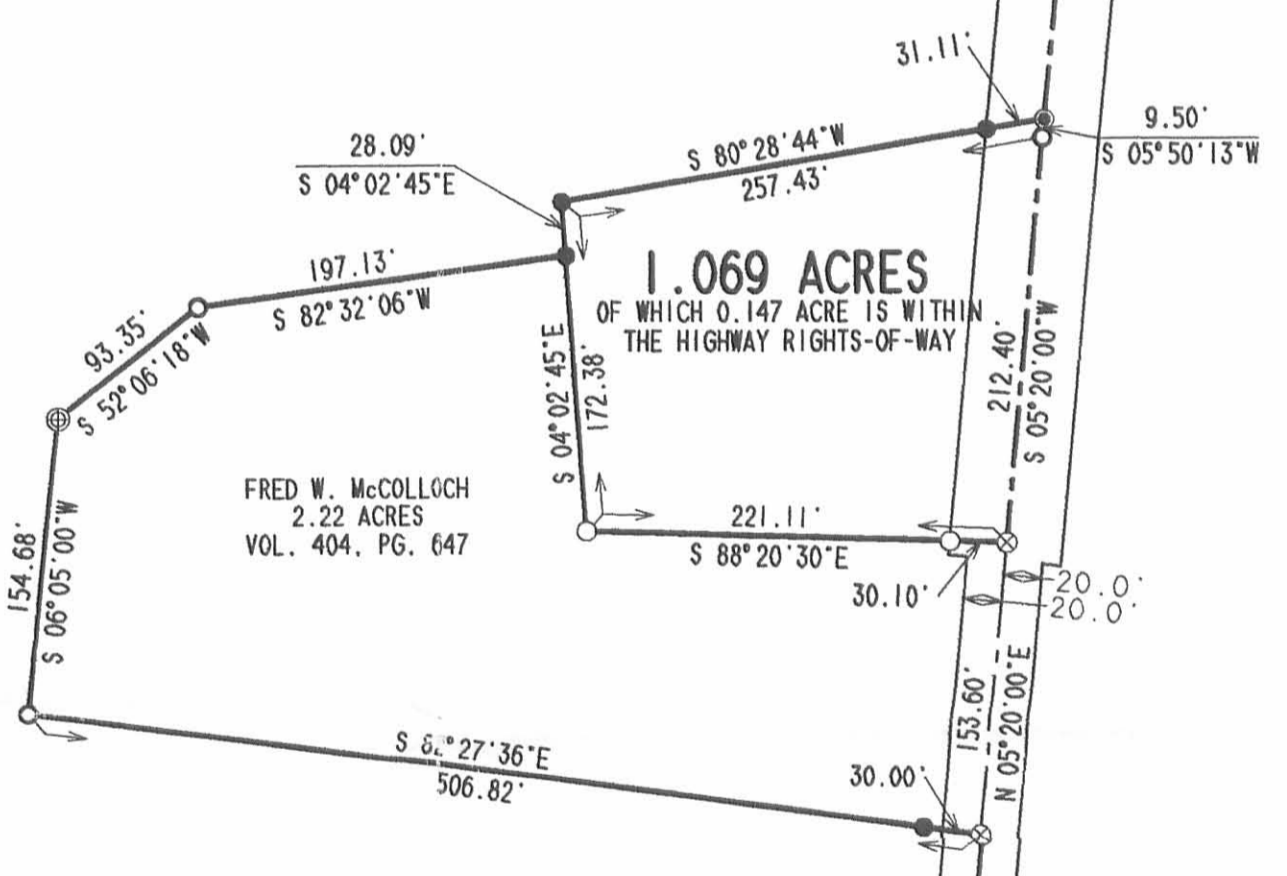
TOWNSHIP ROAD 204 (50')



GEORGE HANSON DEAL
95.76 ACRES
O.R. 349, PG. 354

N 05°31'10"E
2720.66'

51.731 ACRES
OF WHICH 0.783 ACRE IS WITHIN
THE HIGHWAY RIGHTS-OF-WAY



SURVEY OF TWO TRACTS OUT
OF THE THOMAS J. EWING
ORIGINAL 62-1/2 ACRE AND 14.78 ACRE TRACT
OFFICIAL RECORD 233, PAGE 671
TRACT II AND TRACT III
SECTION 9, TOWN 3, RANGE 14
HARRISON TOWNSHIP
LOGAN COUNTY, OHIO



SURVEYED BY:
Jeffrey I. Lee
JEFFREY I. LEE
PROFESSIONAL SURVEYOR 6359
AUGUST 22, 2002

COPYRIGHT 2002 BY:
LEE SURVEYING & MAPPING CO., INC.
117 North Madriver Street
BELLEFONTAINE, OHIO 45311
(937) 593-7335

2 WORKING DAYS
BEFORE YOU DIG
CALL TOLL FREE 800-362-2764
OHIO UTILITIES PROTECTION SERVICE.

HARRISON TOWNSHIP
UNION TOWNSHIP
TOWNSHIP ROAD 200

9 3
8 2

INDEXED ON MAP
5251 DP

Lee Surveying and Mapping Co., Inc.

Land Surveys • Topography • Subdivisions • Construction Layout

117 N. Madriver St.
Bellefontaine OH 43311



Phone: (937) 593-7335
Fax: (937) 593-7444

EWING 1.248 ACRES

Lying in Section 9, Town 3, Range 14, Harrison Township, Logan County, Ohio

Being all of the Thomas J. Ewing, etal 1.069 acre tract and part of the 51.731 acre tract as deeded and described in Official Record 664, Page 136, Tract I and Tract II of the Logan County Records of Deeds and being more particularly described as follows:

Beginning at a stone found in a monument box at the south east corner of Section 9, and on the intersection of center-lines of Township Road 32 (variable widths) and Township Road 200 (30 feet wide) also being the north line of Union Township.

THENCE, with east line of Section 9 and the center-line of Township Road 32, N 5°-20'-00"E, a distance of 1519.12 feet a railroad spike found at THE TRUE POINT OF BEGINNING.

THENCE, with the north line of Fred W. McColloch and Rebecca Jane McColloch 2.220 acre tract (Vol. 404, Pg.647), N 88°-20'-30"W, a distance of 221.11 feet to a 5/8 inch iron rod found, passing a 5/8 inch iron rod found at 30.00 feet.

THENCE, with continuing with the north line of said 2.220 acre tract, N 4°-02'-45"W, a distance of 202.52 feet to a 5/8 inch iron rod set, passing a 5/8 inch iron rod found at a corner of said 1.069 acre tract at 172.38 feet.

THENCE, N 80°-28'-44"E, a distance of 262.80 feet to a MAG nail found, passing a 5/8 inch iron rod found at 231.69 feet.

THENCE, with the center-line of Township Road 32, S 5°-50'-13"W, a distance of 40.61 feet to a 3/4 inch iron pipe found, passing a MAG nail found at a corner of said 1.069 acre tract at 31.11 feet.

THENCE, with the east line of Section 9 and the center-line of Township Road 32, S 5°-20'-00"W, a distance 212.40 feet to the point of beginning.

Containing 1.248 acre of which 0.179 acre is within the highway right-of-way.

The basis for bearings is the east line of Section 9 and the center-line of Township Road 32 being N 5°-20'-00"E, and all other bearings are from angles and distances measured in a field survey by Lee Surveying and Mapping Co., Inc. on October 13, 2004.

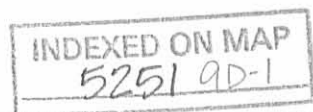


ORIGINAL STAMP IN GREEN

Description prepared by:

Jeffrey I. Lee
Professional Surveyor 6359
October 13, 2004
Revised October 19, 2004

3404104



Lee Surveying and Mapping Co., Inc.

Land Surveys • Topography • Subdivisions • Construction Layout

117 N. Madriver St.
Bellefontaine OH 43311



Phone: (937) 593-7335
Fax: (937) 593-7444

EWING 25' INGRESS/EGRESS EASEMENT

Lying in Section 9, Town 3, Range 14, Harrison Township, Logan County, Ohio

Being a 25 feet wide ingress/egress easement over the Thomas J. Ewing, etal 1.069 acre tract and 51.731 acre tract as deeded and described in Official Record 664, Page 136, Tract I and Tract II of the Logan County Records of Deeds and being more particularly described as follows:

Beginning at a stone found in a monument box at the southeast corner of Section 9 and on the intersection of center-lines of Township Road 32 (variable widths) and Township Road 200 (30 feet wide) also being the north line of Union Township.

THENCE, with east line of Section 9 and the center-line of Township Road 32, N 5°-20'-00"E, a distance of 1731.52 feet a 3/4 inch iron pipe found.

THENCE, with the center-line of Township Road 32, N 5°-50'-13"E, a distance 9.50 feet to a MAG nail found, being the TRUE POINT OF BEGINNING for this easement.

THENCE, with the center-line of the 25.00 feet wide easement, S 80°-28'-44"W, a distance of 257.43 feet to a 5/8 inch iron rod found at the northwest corner of the said 1.069 acre tract, passing a 5/8 inch iron rod found at 31.11 feet and thence terminate.

The basis for bearings is the east line of Section 9 being N 5°-20'-00"E, and all other bearings are from angles and distances measured in a field survey by Lee Surveying and Mapping Co., Inc. on October 13, 2004.



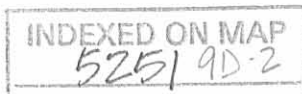
ORIGINAL STAMP IN GREEN

Description prepared by:

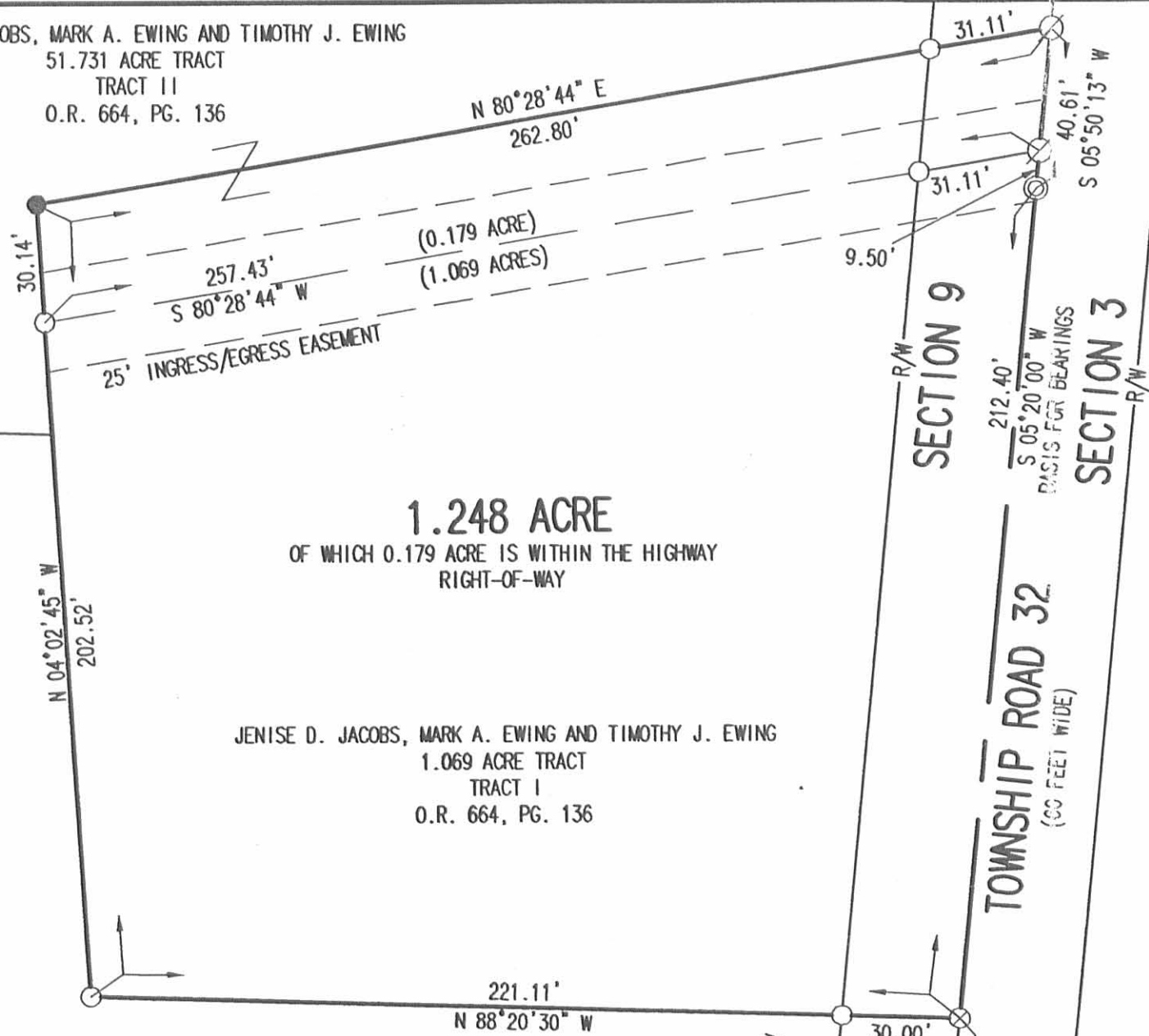
A handwritten signature in black ink, appearing to read 'Jeffrey I. Lee'.

Jeffrey I. Lee
Professional Surveyor 6359
October 13, 2004
Revised October 19, 2004

3404104



JENISE D. JACOBS, MARK A. EWING AND TIMOTHY J. EWING
 51.731 ACRE TRACT
 TRACT II
 O.R. 664, PG. 136



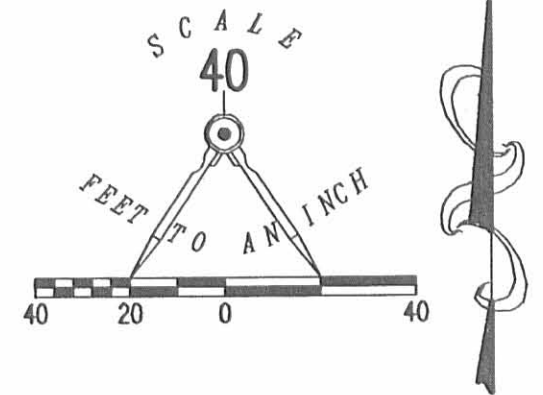
1.248 ACRE
 OF WHICH 0.179 ACRE IS WITHIN THE HIGHWAY
 RIGHT-OF-WAY

JENISE D. JACOBS, MARK A. EWING AND TIMOTHY J. EWING
 1.069 ACRE TRACT
 TRACT I
 O.R. 664, PG. 136

FRED W. McCOLLOCH AND REBECCA JANE McCOLLOCH
 2.220 ACRE TRACT
 VOL 404, PG. 647

LEGEND

- 5/8 INCH IRON ROD SET
- 5/8 INCH IRON ROD FOUND
- ⊗ MAG NAIL FOUND
- ⊠ MONUMENT BOX FOUND WITH STONE INSIDE
- ⊗ RAILROAD SPIKE FOUND
- ⊙ 3/4 INCH IRON PIPE FOUND



A SURVEY OF A
 1.248 ACRE TRACT OUT OF THE
 THOMAS J. EWING ETAL
 ALL 1.069 ACRE TRACT (TRACT I) AND
 PART OF THE 51.731 ACRE TRACT (TRACT II)
 OFFICIAL RECORD 664, PAGE 136
 SECTION 9, TOWN 3, RANGE 14
 HARRISON TOWNSHIP
 LOGAN COUNTY, OHIO

SURVEYED BY:



Jeffrey I. Lee
 JEFFREY I. LEE
 PROFESSIONAL SURVEYOR 6359
 OCTOBER 13, 2004
 REVISED OCTOBER 19, 2004

COPYRIGHT 2004 BY:
 LEGURVEYING & MAPPING CO., INC.
 117 North Madriver Street
 BELLEFONTAINE, OHIO 43311
 (937) 593-7335

ORIGINAL STAMP IN GREEN

ADW D413 3404104 L-3404104-3

2 WORKING DAYS
BEFORE YOU DIG
 CALL TOLL FREE **800-362-2764**
 OHIO UTILITIES PROTECTION SERVICE.

INDEXED ON MAP
 5251 9D

REC'D 4-12-04 SUM OK

Lee Surveying and Mapping Co., Inc.

Land Surveys • Topography • Subdivisions • Construction Layout

117 N. Madriver St.
Bellefontaine OH 43311



Phone: (937) 593-7335
Fax: (937) 593-7444

JACOBS 1.055 ACRES TRACT A

Lying in Section 9, Town 3, Range 14, Harrison Township, Logan County, Ohio.

Being out of the Jenise D. Jacobs, Mark A. Ewing and Timothy J. Ewing, 51.731 acre tract as deeded and described in Official Record 664, Page 136, Tract II of the Logan County Records of Deeds and being more particularly described as follows:

Beginning at a 1 inch iron bar found on the east line of Section 9, at the intersection of center-lines of Township Road 204 (60 feet wide) and Township Road 32 (60 feet wide).

THENCE, with east line of Section 9 and the center-line of Township Road 32, S 5°-50'-13"W, a distance of 902.75 feet to a railroad spike found at THE TRUE POINT OF BEGINNING.

THENCE, with east line of Section 9 and the center-line of Township Road 32, S 5°-50'-13"W, a distance of 197.79 feet to a MAG nail set.

THENCE, N 89°-23'-47"W, a distance of 222.06 feet to a 5/8 inch iron rod set, passing a 5/8 inch iron rod set at 30.13 feet.

THENCE, N 5°-50'-13"E, a distance of 218.03 feet to a 5/8 inch iron rod set.

THENCE, with an extension of and with the south line of Rebecca R. Tanger 0.64 acre tract (O.R. 162, Pg. 17), S 84°-10'-00"E, a distance of 221.13 feet to the point of beginning, passing a 5/8 inch iron rod set at 21.14 feet and a 5/8 iron rod set at 191.13 feet.

Containing 1.055 acres of which 0.137 acre is within the highway right-of-way.

The basis for bearings is the east line of Section 9 being S 5°-50'-13"W, and all other bearings are from angles and distances measured in a field survey by Lee Surveying and Mapping Co., Inc. on April 5, 2004.

Description prepared by:



ORIGINAL STAMP IN GREEN

Jeffrey I. Lee
Professional Surveyor 6359
April 7, 2004

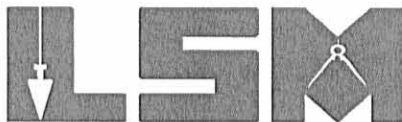
3404034

INDEXED ON MAP
5251 10D-1

REC'D 4-12-04 SML/OK
Lee Surveying and Mapping Co., Inc.

Land Surveys • Topography • Subdivisions • Construction Layout

117 N. Madriver St.
Bellefontaine OH 43311



Phone: (937) 593-7335
Fax: (937) 593-7444

**JACOBS
1.055 ACRE
TRACT B**

Lying in Section 9, Town 3, Range 14, Harrison Township, Logan County, Ohio.

Being out of the Jenise D. Jacobs, Mark A. Ewing and Timothy J. Ewing, 51.731 acre tract as deeded and described in Official Record 664, Page 136, Tract II of the Logan County Records of Deeds and being more particularly described as follows:

Beginning at a 1 inch iron bar found on the east line of Section 9 at the intersection of center-lines of Township Road 204 (60 feet wide) and Township Road 32 (60 feet wide).

THENCE, with the east line of Section 9 and the center-line of Township Road 32, S 5°-50'-13"W, a distance of 1100.54 feet to a MAG nail set at THE TRUE POINT OF BEGINNING.

THENCE, with the east line of Section 9 and the center-line of Township Road 32, S 5°-50'-13"W, a distance of 197.79 feet to a MAG nail set.

THENCE, S 85°-27'-34"W, a distance of 224.81 feet to a 5/8 inch iron rod set, passing a 5/8 inch iron rod set at 30.50 feet.

THENCE, N 5°-50'-13"E, a distance of 218.03 feet to a 5/8 inch iron rod set.

THENCE, S 89°-23'-47"E, a distance of 222.06 feet to the point of beginning, passing a 5/8 inch iron rod set at 191.93 feet.

Containing 1.055 acre of which 0.137 acre is within the highway right-of-way.

The basis for bearings is the east line of Section 9 being S 5°-50'-13"W, and all other bearings are from angles and distances measured in a field survey by Lee Surveying and Mapping Co., Inc. on April 5, 2004.

Description prepared by:

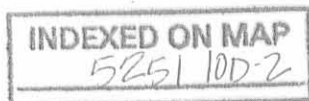


ORIGINAL STAMP IN GREEN

A handwritten signature in black ink, appearing to read 'Jeffrey I. Lee'.

Jeffrey I. Lee
Professional Surveyor 6359
April 7, 2004

3404034



REC'D 4-12-04 SMM OK
Lee Surveying and Mapping Co., Inc.

Land Surveys • Topography • Subdivisions • Construction Layout

117 N. Madriver St.
Bellefontaine OH 43311



Phone: (937) 593-7335
Fax: (937) 593-7444

**JACOBS
1.055 ACRE
TRACT C**

Lying in Section 9, Town 3, Range 14, Harrison Township, Logan County, Ohio.

Being out of the Jenise D. Jacobs, Mark A. Ewing and Timothy J. Ewing, 51.731 acre tract as deeded and described in Official Record 664, Page 136, Tract II of the Logan County Records of Deeds and being more particularly described as follows:

Beginning at a 1 inch iron bar found on the east line of Section 9 at the intersection of center-lines of Township Road 204 (60 feet wide) and Township Road 32 (60 feet wide).

THENCE, with the east line of Section 9 and the center-line of Township Road 32, S 5°-50'-13"W, a distance of 1298.33 feet to a MAG nail set at THE TRUE POINT OF BEGINNING.

THENCE, with east line of Section 9 and the center-line of Township Road 32, S 5°-50'-13"W, a distance of 197.79 feet to a MAG nail set.

THENCE, S 80°-28'-44"W, a distance of 229.32 feet to a 5/8 inch iron rod set, passing a 5/8 inch iron rod set at 31.11 feet.

THENCE, N 5°-50'-13"E, a distance of 218.03 feet to a 5/8 inch iron rod set.

THENCE, N 85°-27'-34"E, a distance of 224.81 feet to the point of beginning, passing a 5/8 inch iron rod set at 194.31 feet.

Containing 1.055 acre of which 0.137 acre is within the highway right-of-way.

The basis for bearings is the east line of Section 9 being S 5°-50'-13"W, and all other bearings are from angles and distances measured in a field survey by Lee Surveying and Mapping Co., Inc. on April 5, 2004.

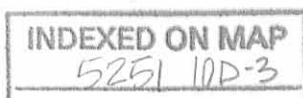
Description prepared by:



ORIGINAL STAMP IN GREEN


Jeffrey I. Lee
Professional Surveyor 6359
April 7, 2004

3404034



TOWNSHIP ROAD 204
(60 FEET WIDE)

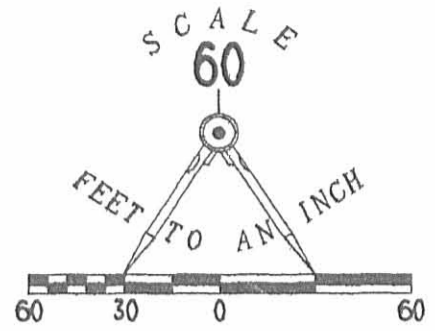
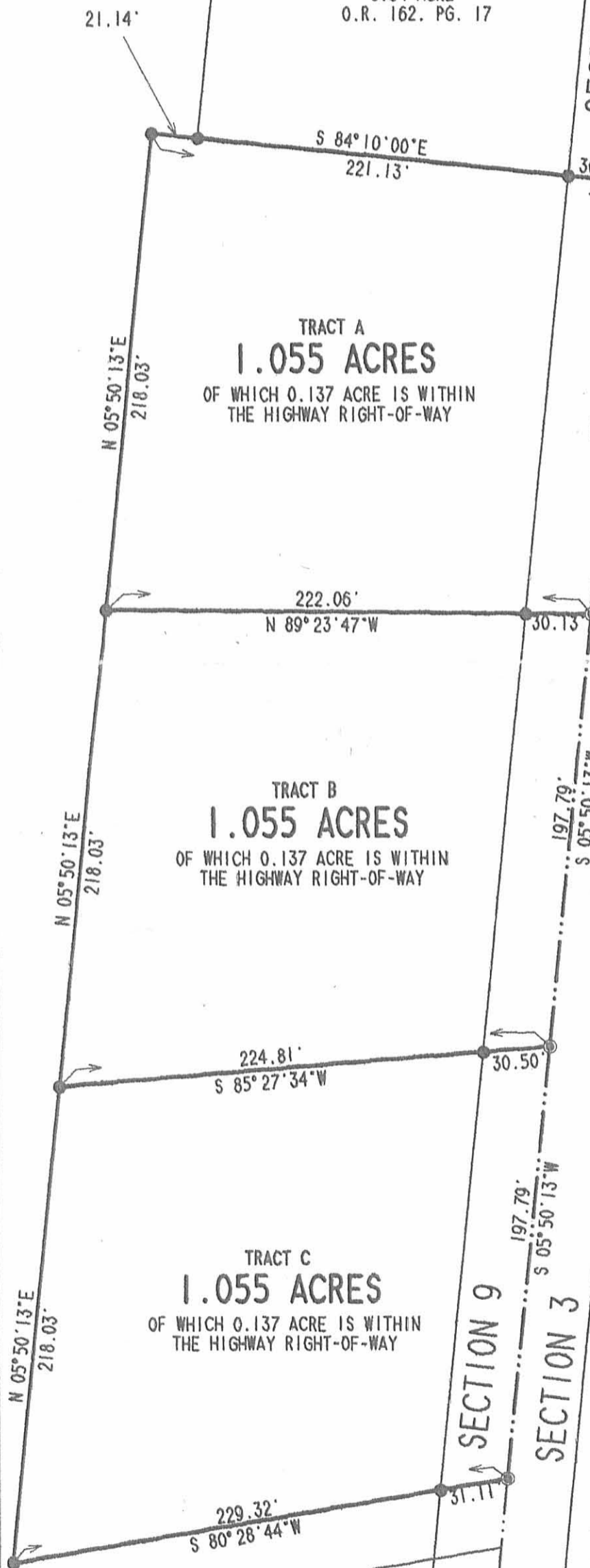
JENISE D. JACOBS,
MARK A. EWING AND
TIMOTHY J. EWING
51.731 ACRE
O.R. 664, PG. 136
TRACT II

REBECCA R. TANGER
0.64 ACRE
O.R. 162, PG. 17

TRACT A
1.055 ACRES
OF WHICH 0.137 ACRE IS WITHIN
THE HIGHWAY RIGHT-OF-WAY

TRACT B
1.055 ACRES
OF WHICH 0.137 ACRE IS WITHIN
THE HIGHWAY RIGHT-OF-WAY

TRACT C
1.055 ACRES
OF WHICH 0.137 ACRE IS WITHIN
THE HIGHWAY RIGHT-OF-WAY



LEGEND

- 5/8 INCH IRON ROD SET
- ⊙ MAG NAIL SET
- ⊗ 1 INCH IRON BAR FOUND
- ⊗ RAILROAD SPIKE FOUND

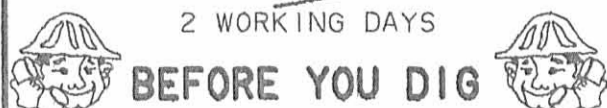
TOWNSHIP ROAD 32 (60 FEET WIDE)

A SURVEY OF
THREE TRACTS OUT OF THE
JENISE D. JACOBS,
MARK A. EWING AND
TIMOTHY J. EWING
51.731 ACRE TRACT
OFFICIAL RECORD 664, PAGE 136
TRACT II
SECTION 9, TOWN 3, RANGE 14
HARRISON TOWNSHIP
LOGAN COUNTY, OHIO

SURVEYED BY:

JEFFREY I. LEE
PROFESSIONAL SURVEYOR 6359
APRIL 7, 2004

COPYRIGHT 2004 BY:
LEE SURVEYING & MAPPING CO., INC.
117 North Madriver Street
BELLEFONTAINE, OHIO 43311
(937) 593-7335



CALL TOLL FREE **800-362-2764**
OHIO UTILITIES PROTECTION SERVICE.

INDEXED ON MAP
5251 10P

ADW D412 3404034A L-3404034-3