

Downing to Patrick
Sec. 4 T-3 R-14
Harrison Township
August 24, 1973

The following described real estate situated in Harrison Township, Logan County, Ohio and being part of the southwest 1/4 of Section 4, Town 3, Range 14 of the Between the Miami Rivers Survey and more particularly described as follows:

Beginning at an iron bar at the northwest corner of Audrie I. Patrick's 2.37 acre tract; thence with the west line of said tract produced, North 47.3 feet; thence S. 89°50' E. 567.5 feet to the west line of Richard E. Kelly's 118.67 acre tract; thence with said Kelly's west line S. 1°30' E. 47.3 feet to the northeast corner of said Patrick's 2.37 acre tract; thence with said Patrick's north line N. 89°50' W. 568.7 feet to the place of beginning.

Containing 0.62 of an acre more or less.

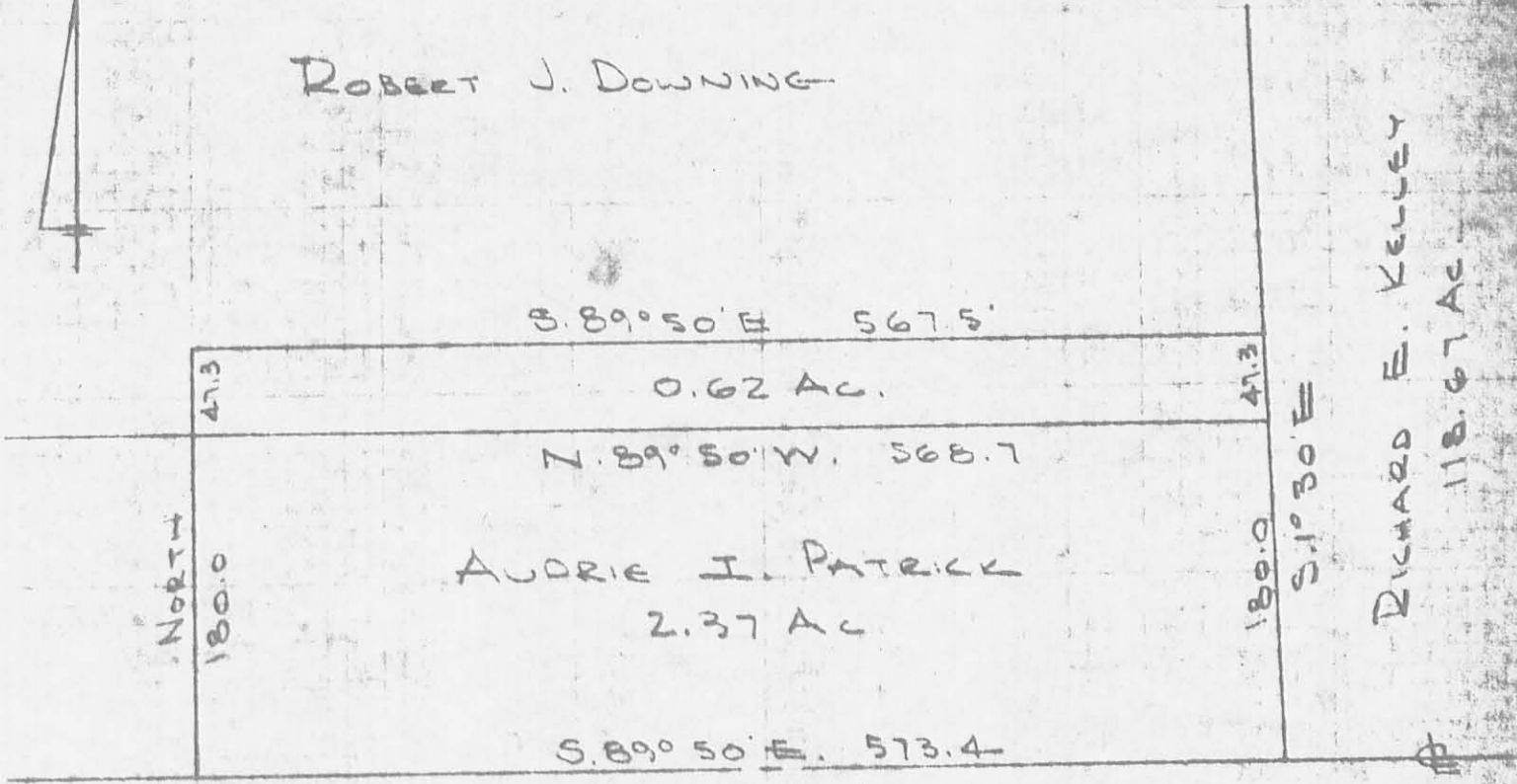
The above described tract being part of Robert J. Downing's 26.59 acre tract.

INDEXED ON MAP

5254 1D



ROBERT J. DOWNING



North
180.0

47.3

S. 89° 50' E 567.5'

0.62 AC.

47.3

N. 89° 50' W. 568.7

AUDRIE I. PATRICK

2.37 AC.

189.0

S. 1° 30' E

RICHARD E. KELLEY

118.67 AC.

S. 89° 50' E. 573.4

C. H. No. 11

5254-1P

INDEXED ON MAP

DOWNING TO PATRICK

Sec. 4 T-3 R-14

HARRISON TOWNSHIP

LOGAN COUNTY, OHIO

AUGUST 24, 1973

SCALE 1" = 100'

DAV L. DODSON
REG. SURVEYOR 4270
BELLEFONTAINE, O.

Lee Surveying and Mapping Co., Inc.

Land Surveys • Topography • Subdivisions • Construction Layout

117 N. Madriver St.
Bellefontaine OH 43311



Phone: (937) 593-7335
Fax: (937) 593-7444

DOWNING 29.053 ACRES

Lying in Section 4, Town 3, Range 14, Harrison Township, Logan County, Ohio.

Being all of the remainder of the Robert J. Downing and Betty I. Downing original 34.92 acre tract as deeded and described in Volume 255, Page 513, Tract 2, and all of the 0.25 acre tract as deeded and described in Volume 317, Page 718 of the Logan County Records of Deeds and being more particularly described as follows:

Beginning at a stone found in a monument box at the southwest corner of Section 4 at the intersection of the center-lines of County Highway 11 and Township Road 32.

THENCE, with the south line of Section 10 and the center-line of County Highway 11 (40 feet wide), S 86°-45'-00" E, a distance of 429.87 feet to a railroad spike found at the TRUE POINT OF BEGINNING.

THENCE, with the lines of the Ruth Anne Lamb 1.000 acre tract (O.R. 294, Pg. 249), the following two courses:

N 3°-02'-25" E, a distance of 227.24 feet to a 5/8 inch iron rod found in a concrete monument, passing a 5/8 inch iron rod found in a concrete monument at 20.00 feet.

N 86°-46'-23" W, a distance of 190.92 feet to a 5/8 inch iron rod found in a concrete monument.

THENCE, with the east line of the Louis G. English 0.69 acre tract (Vol. 338, Pg. 699), the William W. Doup 0.69 acre tract (O.R. 101, Pg. 791), the Timothy D. O'Rielly 0.69 acre tract (O.R. 283, Pg. 792), the Patsiene Forman 0.69 acre trace (Vol. 382, Pg. 972), the Robert C. Gietzen 0.69 acre tract (Vol. 324, Pg. 417) and the Harold Eugene Hunt 0.69 acre tract (O.R. 70, Pg. 781), N 2°-17'-27" E, a distance of 780.96 feet to a 5/8 inch iron rod set.

THENCE, with the north line of the said Harold Eugene Hunt 0.69 acre tract, N 86°-54'-10" W a distance of 228.30 feet to a MAG nail set, passing a 5/8 inch iron rod set at 198.13 feet.

THENCE, with the west line of Section 4 and within the right-of-way of Township Road 32 (60 feet wide), N 3°-03'-53" E, a distance of 292.71 feet to a MAG nail set.

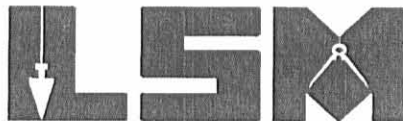
THENCE, with a south line of the Joyse Ann Leister original 213.67 acre tract (O.R. 125, Pg. 653), S 86°-49'-20" E, a distance of 1335.58 feet to a 5/8 inch iron rod set, passing a MAG nail set at 30.22 feet.

INDEXED ON MAP
5254 2D-1

Lee Surveying and Mapping Co., Inc.

Land Surveys • Topography • Subdivisions • Construction Layout

117 N. Madriver St.
Bellefontaine OH 43311



Phone: (937) 593-7335
Fax: (937) 593-7444

THENCE, with the west lines of the said original 213.67 acre tract and the Leonard A. Russian 5.302 acre tract (O.R. 483, Pg. 209), S 3°-02'-59" W, a distance of 1074.50 feet to a 5/8 inch iron rod set.

THENCE, with the north line of the David E. Silvers 0.62 acre tract (Vol. 402, Pg. 468, Tract II), the Gary McLaughlin 0.84 acre tract (O.R. 407, Pg. 323) and the Patti J. Willis 0.68 acre tract (O.R. 285, Pg. 924), N 86°- 45'-26" W, a distance of 845.90 feet to a 3/4 inch iron rod found.

THENCE, with the west line of the said Patti J. Willis 0.68 acre tract, S 3°-05'-01" W, a distance of 227.19 feet to a railroad spike found, passing a 5/8 inch iron rod found at 207.19 feet.

THENCE, with the South line of Section 4 and the center-line of County Highway 11, N 86°-45'-00" W, a distance of 60.01 feet to the point of beginning.

Containing 29.053 acres of which 0.231 acres are within the highway rights-of-way.

The basis for bearings is the west line of Section 4 being S 3°-03'-53" W, and all other bearings are from angles and distances measured in a field survey by Lee Surveying and Mapping Co., Inc. on February 20, 2001.

Description prepared by:

A handwritten signature in black ink, appearing to read 'J. Lee', is written over a horizontal line.

Jeffrey I. Lee
Professional Surveyor 6359
March 9, 2001



ORIGINAL STAMP IN GREEN

L-3098

