

KELLY - LEVAN ANNEXATION
DESCRIPTION

The following described real estate situated in the Township of Harrison,
County of Logan, State of Ohio and being a part of Section 5, T.3, R.14, B.M.R.S.
and being more particularly described as follows:

Beginning at a point in the centerline of S. R. No. 47 at Station 646 + 24.3
as shown on Logan County Engineers Plan L-51, Page 12, said point being an existing
corner to the Corporation Line of the City of Bellefontaine and the northwest corner
to The Racquet Club property; and the southeast corner to Kenneth H. Idles' property;

Thence with the east line of Idles' property, N. 0° 16' W. 663.50 feet to a post,
a corner to Idle, passing through the north right of way line of S. R. No. 47 at
65.50 feet;

Thence with another of Idles' lines, N. 89° 20' E. 257.00 feet to a post, a
corner to Idles' tract;

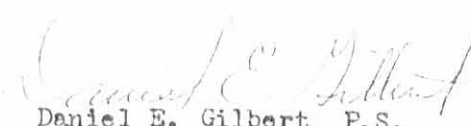
Thence again with Idles' line, N. 0° 16' W. 577.50 feet to a post, a corner to
Idles' tract;

Thence again with Idles' line, N. 89° 20' E. 184.70 feet to a point at an
existing corner to the Corporation line of the City of Bellefontaine;

Thence with the existing Corporation Line, S. 0° 17' E. 1,129.01 feet to a
point in the centerline of S. R. No. 47, passing through the north right of way
line at 1,062.01 feet;

Thence with the centerline of S. R. No. 47, with a Chord Distance of S. 75°-
05.5' W. 455.30 feet to the place of beginning, containing 8.592 Acres of which
0.670 Acres is in the right of way of S. R. No. 47.

I hereby certify that this is a true and accurate description of said tract
as prepared by me on December 29, 1980.


Daniel E. Gilbert, P.S.
Reg. Sur. No. 5402
1041 N. Main St.
Bellefontaine, Ohio 43311

INDEXED ON MAP
5732 1D

KELLY - LEVAN ANNEXATION
 SECTION 5 T.3 R.14 B.M.R.S.
 HARRISON TOWNSHIP
 LOGAN COUNTY, OHIO
 1981

SCALE: 1" = 100'

N

KENNETH H. IDLE ETUX
 118.97 ACRES

N. 89° 20' E. 257.00
 CORPORATION

577.50' LINE
 N. 0° 16' W.

N. 89° 20' E
 184.70'

LINE
 1,129.01'
 BELLEFONTAINE

TOTAL - 8.592 ACRES
 - 0.67 S.R. 47 R/W

 7.922 ACRES

663.50' PROPOSED
 N. 0° 16' W.

S. 0° 17' E.

CORPORATION
 OF

57732 IP

INDEXED ON MAP

65.50'

STA. 646 + 24.3

RIGHT OF WAY LINE
 S. R. No. 47

EXISTING CHORD - S. 75° 05.5' W. 455.30'

67.00'

CITY

CALCULATED AND PLATTED BY:
 DANIEL E. GILBERT, P.S.
 REG. SUR. NO. 5402
 1041 N. MAIN ST.
 BELLEFONTAINE, OHIO 43311

LEVAN - KELLY PROPERTY
 SECTION 5 TOWN 3 RANGE 14
 CITY OF BELLEFONTAINE
 HARRISON TOWNSHIP
 LOGAN COUNTY, OHIO
 JUNE 1972

SCALE: 1" = 100'



5232
 2P

INDEXED ON MAP

PLATTED BY:
 DANIEL E. GILBERT, P.S.
 REG. SUR. NO. 5402
 1041 N. MAIN ST.
 BELLEFONTAINE, OHIO 43311

CARE CENTERS INCORPORATED (TRACT 'A')

Lying in the southeast quarter of Section 5, T-3, R-14, Harrison Township, City of Bellefontaine, Logan County, Ohio.

Being all the remainder of Parcel 1, Tract 2, Volume 335, Page 256 of the Logan County Records of Deeds, containing 4.887 acres, plus a 0.193 acre piece off the northeast corner of Parcel 1, Tract 3 (Volume 335, Page 259) and being particularly described as follows:

Beginning at an iron rod set on the southwest corner of said Parcel 1, Tract 2 and being on the north line of Parcel 1, Tract 1 (Volume 335, Page 256) and also being at an angle in the present City of Bellefontaine corporation line.

THENCE, with the west line of said Tract 2, also being an east line of the Kenneth Idle lands (Volume 334, Page 919) and the west corporation line, N 5°-51'-15" E, a distance of 578.33 feet to an iron rod set on the northwest corner of said Tract 2, and also being a corner of said corporation line.

THENCE, with the north line of said Tract 2, continuing with the said corporation line, S 84°-03' E, a distance of 375.58 feet to an iron rod set on the northwest corner of lands in the name of Bellefontaine Board of Education (Volume 234, Page 52 and Volume 234, Page 43).

THENCE, with said school property, S 6°-00'-40" W, a distance of 657.64 feet to an iron rod set on the northeast corner of School Street (Volume 323, Page 730).

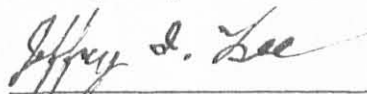
THENCE, with the north terminus of School Street, N 84°-00'-30" W, a distance of 70.00 feet to an iron rod set on the northwest corner of said street.

THENCE, with the west line of School Street extended, N 8°-32'-35" E, a distance of 85.00 feet to an iron rod set on the south line of the aforementioned Parcel 1, Tract 2. This point also being the northwest corner of aforementioned Parcel 1, Tract 3.

THENCE, with the south line of said Parcel 1, Tract 2, N 85°-06'-20" W, a distance of 307.81 feet to the point of beginning. Containing 5.080 acres.

Last previous deed record: Volume 335, Page 259

Surveyed by:



Jeffrey I. Lee
Reg. Surveyor No. 6359
February 1982



L-795

INDEXED ON MAP
5732 3D-1

CARE CENTERS INCORPORATED (TRACT 'B')

Lying in the southeast quarter of Section 5, T-3, R-14, Harrison Township, City of Bellefontaine, Logan County, Ohio.

Being all the remainder, lying north of West Sandusky Avenue (State Route 47), of Parcel 1, Tract 1; Parcel 1, Tract 3 (Except 0.193 acre off the northeast corner) and parcel 2, Tract 2 (0.17 acre) as deeded and described in Volume 335, Page 256 of the Logan County Records of Deeds and more particularly described as follows:

Beginning at a concrete monument found on the north line of West Sandusky Avenue (State Route 47) marking its intersection with the west line of School Street (Volume 323, Page 730) and also marking the southeast corner of the remainder of said Parcel 2, Tract 2.

THENCE, with the north line of West Sandusky Avenue, S 80°-57'-35" W, a distance of 553.09 feet to an iron rod set at the southeast corner of the Kenneth Idle lands (Volume 334, Page 919) and also being the west line of Parcel 1, Tract 1.

THENCE, with the east line of said Idle lands, N 5°-29'-15" E, a distance of 601.44 feet to an iron rod set at the northwest corner of said Parcel 1, Tract 1.

THENCE, with the north line of said Parcel 1, Tract 1, S 85°-06'-20" E, a distance of 560.44 feet to an iron rod set on the west line of School Street extended, passing the southwest corner of Parcel 1, Tract 2 at 252.63 feet.

THENCE, with the said west line extended and the west line of School Street, S 8°-32'-35" W, a distance of 469.16 feet to the point of beginning. Containing 6.708 acres.

Last previous deed reference: Volume 335, Page 256.

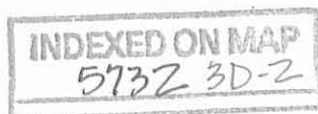
Surveyed by:

Jeffrey I. Lee

Jeffrey I. Lee
Reg. Surveyor No. 6181
February, 1982

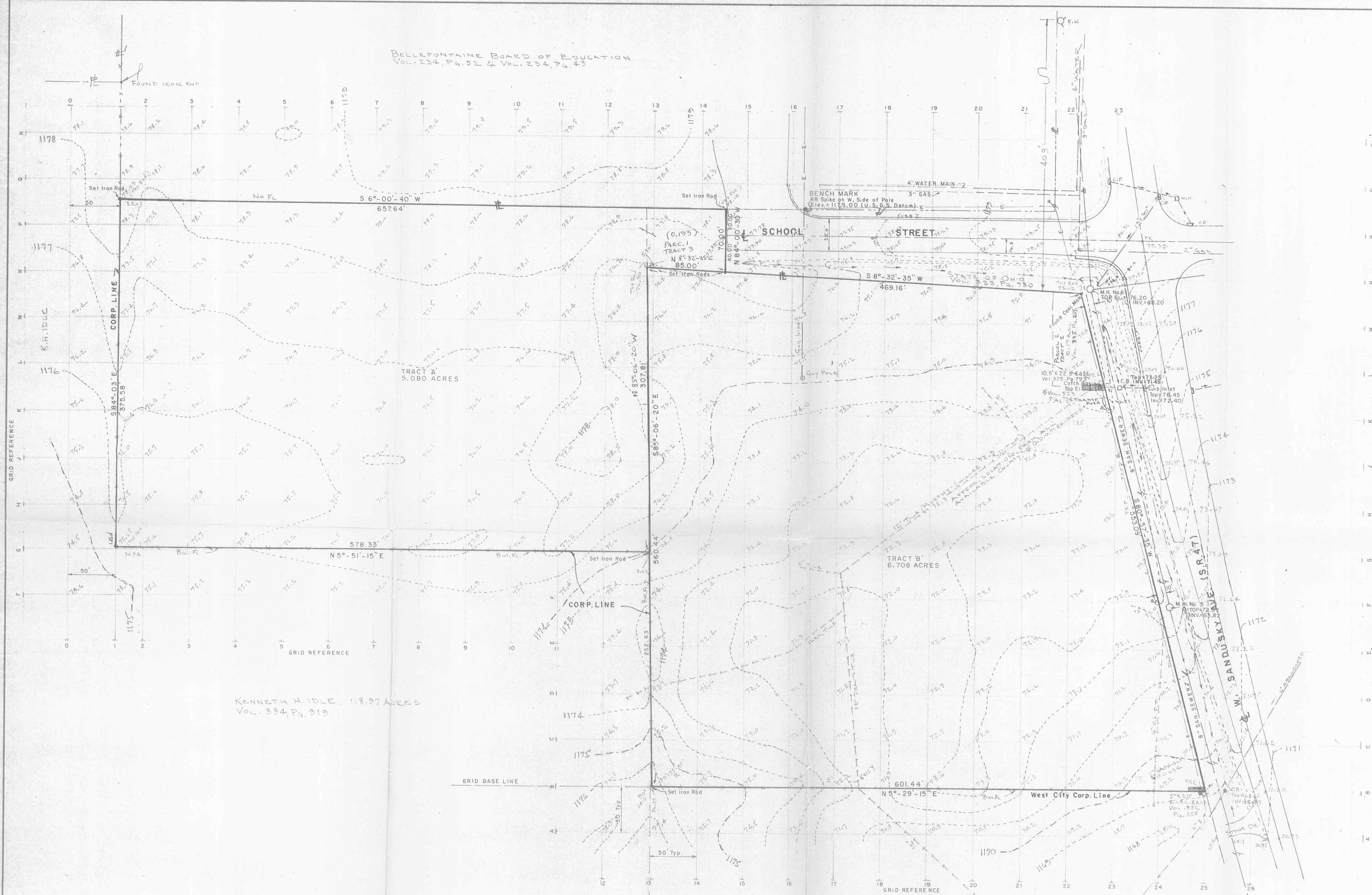


L-795



DATE	SYM.	REVISION RECORD	DR.	CK.

BELLEFONTAINE BOARD OF EDUCATION
Vol. 234, Pg. 52 & Vol. 234, Pg. 43



NORTH
SCALE = 1" = 50'

KENNETH H. IDLE, 118.97 ACRES
Vol. 334, Pg. 919

**BOUNDARY & TOPOGRAPHY SURVEY OF
2 TRACTS (TRACT 'A' = 5.080 AC.) (TRACT 'B' = 6.708 AC.) TOTAL = 11.788 ACRES
SEC. 5, T-3, R-14, HARRISON TOWNSHIP
CITY OF BELLEFONTAINE, OHIO**

5732 3P
INDEXED ON MAP

To all parties interested in title to premises surveyed:
I hereby certify that the foregoing plat was prepared from an actual survey of the premises and that same shows the location of the boundaries and all improvements thereon; that the dimensions of the improvements and the locations thereof with respect to the boundaries are correct as shown; that there are no encroachments from nor upon subject premises.

Jeffrey I. Lee
Registered Surveyor No. 6359
FEB. 1932



TOLERANCES (EXCEPT AS NOTED)		APPROVED BY		DRAWN BY
DECIMAL	±	SCALE: 1" = 50'	DATE:	J. I. Lee
FRACTIONAL	±			
ANGULAR	±			DRAWING NUMBER L-795-1