

McKinnon Description  
Tract One

The following described real estate situated in the Township of Harrison, County of Logan, State of Ohio and being a part of Section 1 and 7, Town 2, Range 15 and being more particularly described as follows:

Beginning in the centerline of C. H. No. 130 (Bellefontaine and Huntsville Pike) at the northwest corner to Robert Glen Herren, Jr.'s present 44.93 Acre tract;

Thence with the centerline of C. H. No. 130, N. 10° 08' W. 724.52 feet to a point in the center of Bridge No. 130-3.97 and Flat Branch Creek;

Thence with the center of Flat Branch Creek the following seventeen courses and distances, N. 50° 38' E. 236.21 feet, N. 71° 01' E. 199.68 feet, N. 75° 12' E. 93.69 feet, S. 86° 49' E. 8.00 feet, N. 67° 56' E. 144.02 feet, N. 82° 31' E. 301.36 feet, N. 74° 46' E. 115.64 feet, N. 51° 46' E. 63.39 feet, N. 87° 16' E. 159.90 feet, N. 67° 16' E. 122.23 feet, N. 75° 01' E. 132.14 feet, N. 61° 46' E. 227.23 feet, N. 80° 31' E. 142.04 feet, S. 57° 44' E. 445.94 feet, S. 27° 14' E. 103.63 feet, S. 7° 16' W. 85.82 feet and S. 16° 16' W. 115.54 feet to a point at the south line of Forris D. McKinnon's present 15.60 Acre tract;

Thence with Forris D. McKinnon's south line, S. 84° 20' E. 360.41 feet to a monument, 545.00 feet right of Station 689 + 00 of the centerline survey of U. S. R. No. 33 as shown on Plan L-48, LOG-33-10.85, Logan County Engineers Office;

Thence with the right of way of U. S. R. No. 33 the following five courses and distances, S. 21° 24' E. 767.96 feet, N. 83° 09' E. 374.00 feet, S. 38° 19' E. 646.82 feet, S. 30° 50' E. 496.49 feet and S. 31° 40' E. 848.20 feet to a post in the north line of Burton Heath's present 2.80 Acre tract;

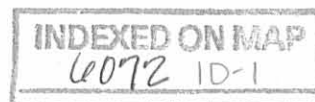
Thence with Burton Heath's and George Franklin Wonder's north line, N. 84° 38' W. 1,366.42 feet to a stone at the southwest corner of the northwest quarter of Section 1 and a northwest corner to Wonder's present 79.21 Acre tract;

Thence with the north line of George Franklin Wonders present 14.90 Acre tract in Section 7, N. 86° 05' W. 473.44 feet to a post in the east line of Mary E. King's present 39.32 Acre tract;

Thence with Mary E. King's east line, N. 5° 00' E. 884.68 feet to a stone at the northeast corner to William F. McKinnon's present 1.404 Acre tract;

Thence with the north line of said 1.404 Acre tract, S. 80° 30' W. 39.95 feet to a post at the southeast corner to Robert Glen Herren, Jr.'s present 44.93 Acre tract;

Thence with Herren's east line, N. 6° 45' W. 637.96 feet to a post at Herren's northeast corner;



(2)

Thence with Herren's north line, S.  $87^{\circ} 10'$  W. 2,304.71 feet to the place of beginning, containing 104.175 Acres, more or less.

There being 76.239 Acres in Section 7 T.2 R.15 and 27.936 Acres in Section 1 T. 2 R.15, excepting 3.134 Acres in the 80 foot right of way of the old C. & L. E. RR. (now belonging to the State of Ohio).

The total area after exceptions being 24.802 Acres in Section 1 and 76.239 Acres in Section 7, making a total of 101.041 Acres, more or less.

I hereby certify that this is a true and accurate description as prepared by me on August 7, 1977.

*Daniel E. Gilbert*

Daniel E. Gilbert, P.S.  
Reg. Sur. No. 5402  
1041 N. Main St.  
Bellefontaine, Ohio 43311

INDEXED ON MAP  
6072 1D-2

McKinnon Description  
Tract two

The following described real estate situated in the Township of Harrison, County of Logan, State of Ohio and being a part of Section 7, Town 2, Range 15 and being more particularly described as follows:

Being a 24.75 foot wide Lane, more particularly described as follows:

Beginning at the southwest corner to Robert Glen Herren, Jr.'s present 44.93 Acre tract in the centerline of C. H. No. 130;

Thence with Herren's south line the following three courses and distances, N. 88° 12' E. 1,171.50 feet to a point, N. 7° 45' E. 242.88 feet to a point and N. 80° 30' E. 1,058.62 feet to a stone at the northeast corner to said lane, passing through a post at Herren's southeast corner at 1,018.67 feet;

Thence S. 5° 00' W. 25.56 feet to a point at Mary E. King's northeast corner;

Thence with Mary E. King's north line the following three courses and distances, S. 80° 30' W. 1,034.01 feet to a point, S. 7° 45' W. 245.58 feet to a point and S. 88° 12' W. 1,188.80 feet to a point in the centerline of C. H. No. 130, said point being the northwest corner to Mary E. King's tract;

Thence with the centerline of C. H. No. 130, N. 10° 08' W. 25.01 feet to the place of beginning, containing 1.404 Acres, more or less.

I hereby certify that this is a true and accurate description as prepared by me on August 7, 1977.

*Daniel E. Gilbert*

Daniel E. Gilbert, P.S.  
Reg. Sur. No. 5402  
1041 N. Main St.  
Bellefontaine, Ohio 43311

INDEXED ON MAP

6092 1D-3

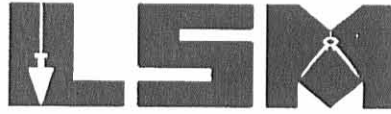


REV'D 11-21-01 SMJ OK

# Lee Surveying and Mapping Co., Inc.

Land Surveys • Topography • Subdivisions • Construction Layout

117 N. Madriver St.  
Bellefontaine OH 43311



Phone: (937) 593-7335  
Fax: (937) 593-7444

## DEISHER 5.000 ACRES

Lying in Section 7, Town 2, Range 15, Harrison Township, Logan County, Ohio.

Being out of the Arthur L. Deisher and Elizabeth H. Deisher original 101.041 acre tract as deeded and described in Volume 391, Page 936 of the Logan County Records of Deeds and being more particularly described as follows:

Beginning at a MAG nail set on County Highway 130 center-line Station 135+68.66 at the southwest corner of the said 101.041 acre tract and the northwest corner of the C. Douglas Chamberlain original 43.583 acre tract (O.R. 173, Pg. 878),

THENCE, with the center-line of County Highway 130, N 10°-08'-00" W, a distance of 399.35 feet to a MAG nail set.

THENCE, N 79°-52'-00" E, a distance of 503.54 feet to a 5/8 inch iron rod set, passing a 5/8 inch iron rod set at 30.00 feet.

THENCE, S 10°-08'-00" E, a distance of 465.86 feet to a 5/8 inch iron rod set.

THENCE, with the north line of the said 43.583 acre tract, S 87°-23'-28" W, a distance of 507.91 feet to the point of beginning, passing a 5/8 inch iron rod set at 477.65 feet.

Containing 5.000 acres, of which 0.276 acre is within the highway right-of-way.

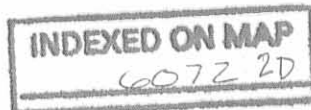
The basis for bearings is the center-line of County Highway 130, being, N 10°-08'-00" W, and all other bearings are from angles and distances measured in a field survey by Lee Surveying and Mapping Co., Inc. on November 9, 2001.

Description prepared by:

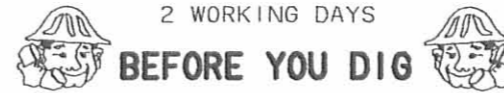
  
Jeffrey I. Lee  
Professional Surveyor 6359  
November 14, 2001



L-3271



REC'D 11-20-01 SWM OK



2 WORKING DAYS

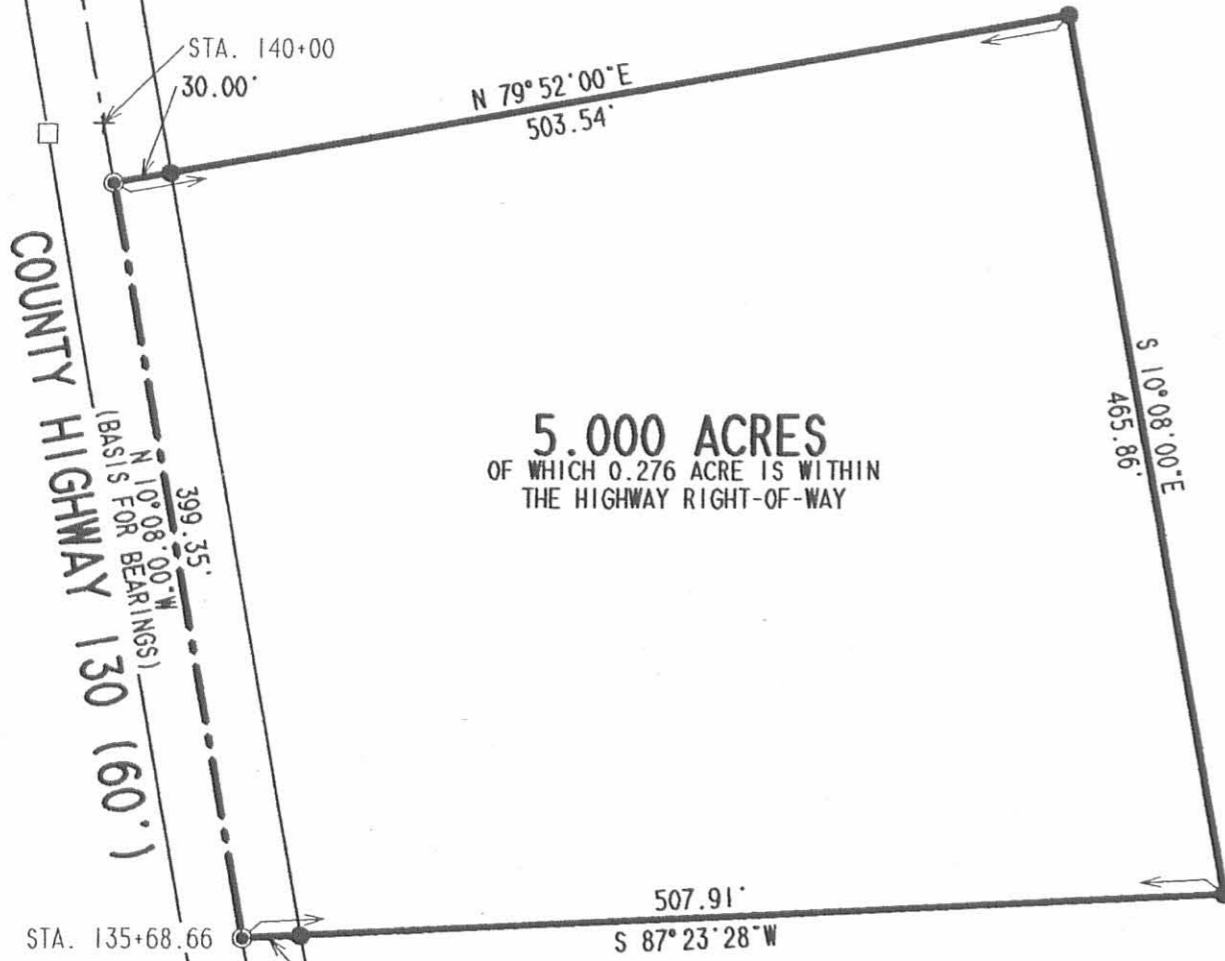
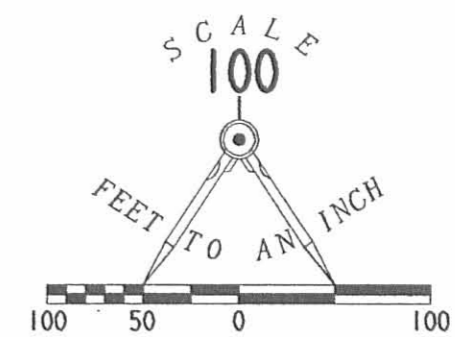
**BEFORE YOU DIG**

CALL TOLL FREE **800-362-2764**

OHIO UTILITIES PROTECTION SERVICE

**LEGEND**

- 5/8 INCH IRON ROD SET
- ⊙ MAG NAIL SET
- CONCRETE RIGHT-OF-WAY MONUMENT FOUND



**5.000 ACRES**  
OF WHICH 0.276 ACRE IS WITHIN  
THE HIGHWAY RIGHT-OF-WAY

ARTHUR L. DEISHER AND  
ELIZABETH H. DEISHER  
ORIG. 101.041 ACRES  
VOL. 391, PG. 936

**SURVEY OF 5.000 ACRES OUT OF  
THE ARTHUR L. DEISHER AND  
ELIZABETH H. DEISHER  
ORIGINAL 101.041 ACRE TRACT  
VOLUME 391, PAGE 936  
SECTION 7, TOWN 2, RANGE 15  
HARRISON TOWNSHIP  
LOGAN COUNTY, OHIO**

C. DOUGLAS CHAMBERLAIN AND  
PATRICIA J. CHAMBERLAIN  
ORIG. 43.583 ACRES  
O.R. 173, PG. 878



ORIGINAL STAMP IN GREEN

SURVEYED BY:

*Jeffrey I. Lee*  
JEFFREY I. LEE  
PROFESSIONAL SURVEYOR 6359  
NOVEMBER 9, 2001

COPYRIGHT 2001 BY:

**LEE SURVEYING & MAPPING CO., INC.**  
117 North Madriver Street  
BELLEFONTAINE, OHIO 43311  
(937) 593-7335

D 405

ARTDESH

L-3271-3

INDEXED ON MAP  
6672 2P

1954

ELLIOTT to WM. MCKINNON SURVEY

Being situated in Section 7, Town 2, Range 15 of Harrison Township, Logan County, Ohio, and being more particularly described as follows:

Beginning at the northeast corner of said Section 7; thence following the east line of said Section 7, S. 4°-15' W. 1528.0 feet to a point in the center of the channel of Flat Branch for the beginning point of this description.

Thence following same east line of said Section 7, S. 4°-15' W. 213.0 feet to a stone; thence following a fence line S. 79°-27' W. 529.0 feet to a hub; thence N. 5°-46' W. 637.6 feet to a hub; thence S. 87°-07' E. 121.0 feet to a stone in the channel of Flat Branch; thence with the center of the channel following the meandering thereof, for the next four courses; thence S. 62°-30' E. 55.0 feet; thence S. 9°-00' E. 66.0 feet; thence S. 35°-45' E. 226.0 feet; thence S. 79°-00' E. 293.0 feet to the point of beginning.

Containing 5.07 acres.

Surveyed from 83.43 acre tract.

INDEXED ON MAP  
6072 3D