

# Lee Surveying and Mapping Co.



Farm Surveys • Lot Surveys • Topography • Subdivisions • Construction Layout

855 EAST SANDUSKY AVENUE  
BELLEFONTAINE, OHIO 43311

(513) 593-5780

CLAYTON M. LEE, P.S.  
JEFFREY I. LEE, P.S.

## C. DOUGLAS CHAMBERLAIN SURVEY

Lying in the southeast quarter of Section 7, T-2, R-15, Harrison Township, Logan County, Ohio and being out of that 24.71 acres deeded and described in Volume 377, Page 273 of the Logan County Records of Deeds and more particularly described as follows:

Beginning at an iron spike found in the center-line of County Highway 130, marking the northwest corner of the grantor's said 24.71 acres. This point being Station 115+03 as shown in the Logan County Engineers maps and records.

THENCE, with said center-line, S 10°-16' E, a distance of 243.35 feet to a spike. THE TRUE POINT OF BEGINNING.

THENCE, N 83°-25' E, a distance of 309.00 feet to an iron rod, passing an iron rod set on the road right-of-way line at 30.06 feet.

THENCE, S 8°-50'-36" E, a distance of 240.13 feet to an iron rod.

THENCE, S 86°-03'-24" W, a distance of 284.18 feet to a spike in the center-line of County Highway 130, passing an iron rod set on the road right-of-way line at 252.77 feet.

THENCE, with a curve to the right, (Radius = 1145.92 feet), the chord of which bears N 15°-45'-16" W, a distance of 213.36 feet to the P.T. of said curve. (Station 112+40.05).

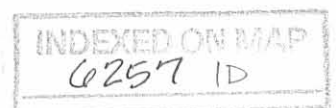
THENCE, continuing with the center-line of County Highway 130, N 10°-16' W, a distance of 19.60 feet to the point of beginning. Containing 1.603 acres, of which 0.155 acre lies within the road right-of-way. Leaving 1.448 usable acres.

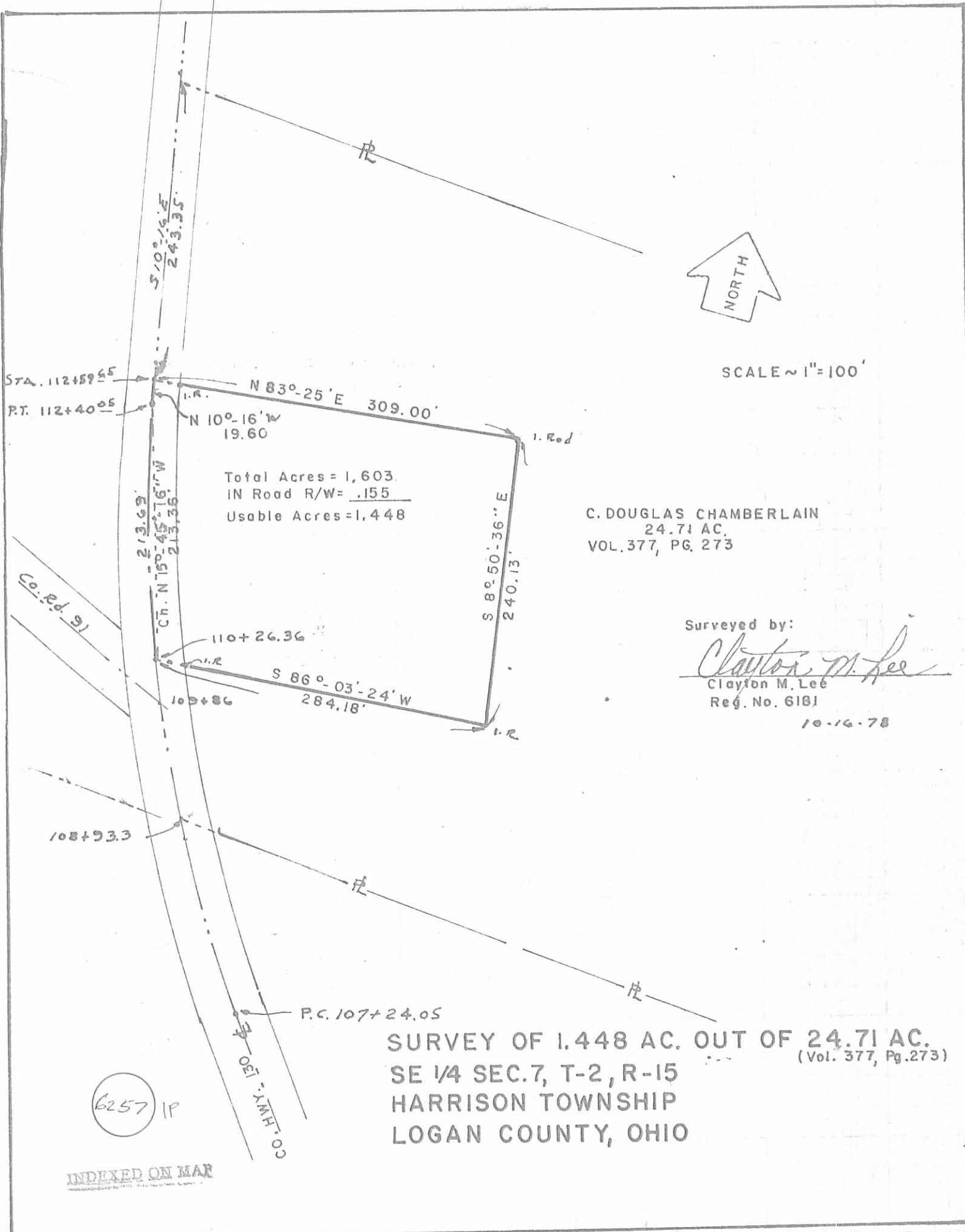
Last previous deed reference: Volume 377, Page 273.

Surveyed by:



*Clayton M. Lee*  
Clayton M. Lee  
Reg. Surveyor No. 6181  
10-16-78





Total Acres = 1,603  
 IN Road R/W = .155  
 Usable Acres = 1,448

C. DOUGLAS CHAMBERLAIN  
 24.71 AC.  
 VOL. 377, PG. 273

Surveyed by:  
*Clayton M. Lee*  
 Clayton M. Lee  
 Reg. No. 6181  
 10-16-78

**SURVEY OF 1.448 AC. OUT OF 24.71 AC.**  
 (Vol. 377, Pg. 273)  
**SE 1/4 SEC. 7, T-2, R-15**  
**HARRISON TOWNSHIP**  
**LOGAN COUNTY, OHIO**

6257 IP

INDEXED ON MAP