

Received 11-27-89



Lee Surveying and Mapping Co.



Farm Surveys • Lot Surveys • Topography • Subdivisions • Construction Layout

143 EAST COLUMBUS AVENUE
BELLEFONTAINE, OHIO 43311

(513) 593-7335
(513) 593-5780

CLAYTON M. LEE, P.S.
JEFFREY I. LEE, P.S.

SKEEN 7.00 ACRES

Lying in Fractional Section 13, T-2, R-15, Harrison Township, Logan County, Ohio.

Being a part of the original 58.43 acre tract in the name of Richard Skeen as deeded and described in Volume 401, Page 15 of the Logan County Records of Deeds and being more particularly described as follows:

Beginning at a railroad spike found on the center-line of County Highway 91, a distance of 266.38 feet westerly, with said center-line of County Highway 91, from the northeast corner of said original 58.43 acres and marking the northwest corner of a 1.187 acre tract (Carol Skeen, O.R. 49, Page 392).

THENCE, with the west line and the west line extended of the said 1.187 acre tract, S 16°-30'-10" W, a distance of 370.89 feet to a 5/8" iron rod (set).

THENCE, N 69°-13' W, a distance of 781.98 feet to a 5/8" iron rod set on a fence line.

THENCE, with said fence line, N 3°-15' E, a distance of 386.61 feet to a railroad spike set on the center-line of County Highway 91.

THENCE, with said center-line, S 69°-13' E, a distance of 866.90 feet to the point of beginning.

Containing 7.00 acres.

This description prepared from an actual field survey.

Basis for bearings: Center-line of County Highway 91 = S 69°-13' E.

Prepared by:

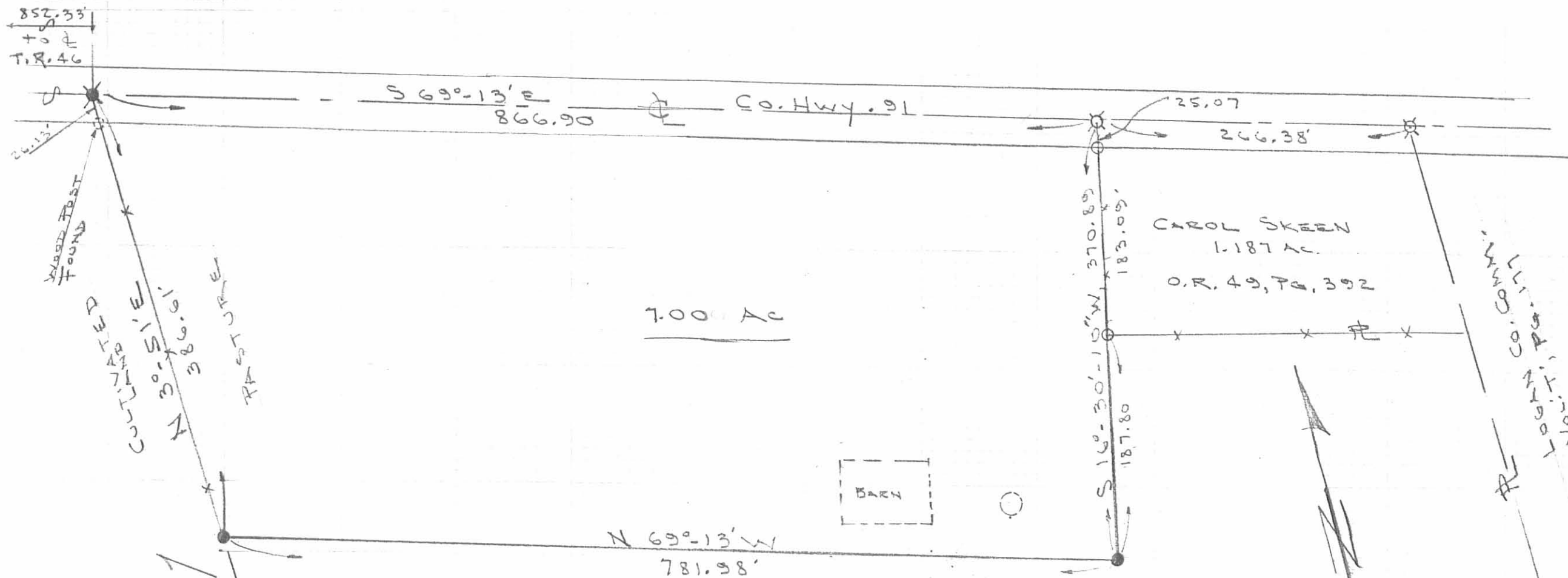
Clayton M. Lee

Clayton M. Lee
Registered Professional Surveyor No. 6181
November 20, 1989



L-1539

INDEXED ON MAP
7606 1D



852.33
to
T.R. 46

S 69°-13' E
866.90
Co. Hwy. 91

CAROL SKEEN
1.187 AC.
O.R. 49, PG. 392

7.00 AC

N 69°-13' W
781.98'

S 16°-30'-10" W
370.89'
183.09'

SCALE = 1" = 100'

SURVEY OF 7.00 ACRES, A PART OF THE
RICHARD SKEEN ORIG. 58.43 ACRES (VOL. 40, PG. 15)
FRAC. SEC. 13, T-2, R-15
HARRISON TWP., LOGAN COUNTY, OHIO

By: *Jeffrey I. Lee*
JEFFREY I. LEE
REG. SURVEYOR 6359
NOV. 17, 1989



INDEXED ON MAP
7606 1P

ORIGINAL STAMP IN GREEN

L-1539-4

WOOD POST FOUND
CULTIVATED
N 30°-51' E
386.61'
RESET SURVEY

Co. Comm.
Logan Co. Ohio
Vol. 40, PG. 15

- O = 5/8" IRON ROD FND
- Q = RR SPIKE FND
- X = " " SET
- = 5/8" IRON ROD SET

Received 2-24-87

OK 2-2-87 (C.R.)

Lee Surveying and Mapping Co.



Farm Surveys • Lot Surveys • Topography • Subdivisions • Construction Layout

855 EAST SANDUSKY AVENUE
BELLEFONTAINE, OHIO 43311

(513) 593-5780

CLAYTON M. LEE, P.S.
JEFFREY I. LEE, P.S.

SKEEN SURVEY

Lying in Fractional Section 13, T-2, R-15, Harrison Township, Logan County, Ohio.

Being off the northeast corner of that 58.43 acre tract in the name of Skeen as deeded and described in Volume 401, Page 15 of the Logan County Records of Deeds and being more particularly described as follows:

Beginning at a railroad spike set on the center-line of County Road 91 a distance of 1719.23 feet southeasterly, with said center-line, from the center-line intersection with Township Road 46.

THENCE, with the center-line of County Road 91, S 69°-13' E. a distance of 266.38 feet to a railroad spike set at grantor's northeast corner, the same also being the northwest corner of the Logan County Commissioner's land (Volume 'T', Page 177).

THENCE, with the line between grantor and the said Logan County land, S 4°-04'-25" W, a distance of 186.08 feet to a 1/2" iron rod set in a fence line.

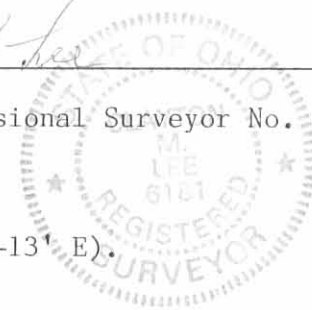
THENCE, N 70°-02' W, a distance of 306.25 feet to a 1/2" iron rod.

THENCE, N 16°-30'-10" E, a distance of 183.09 feet to the point of beginning.

Containing 1.187 acres.

Prepared by:

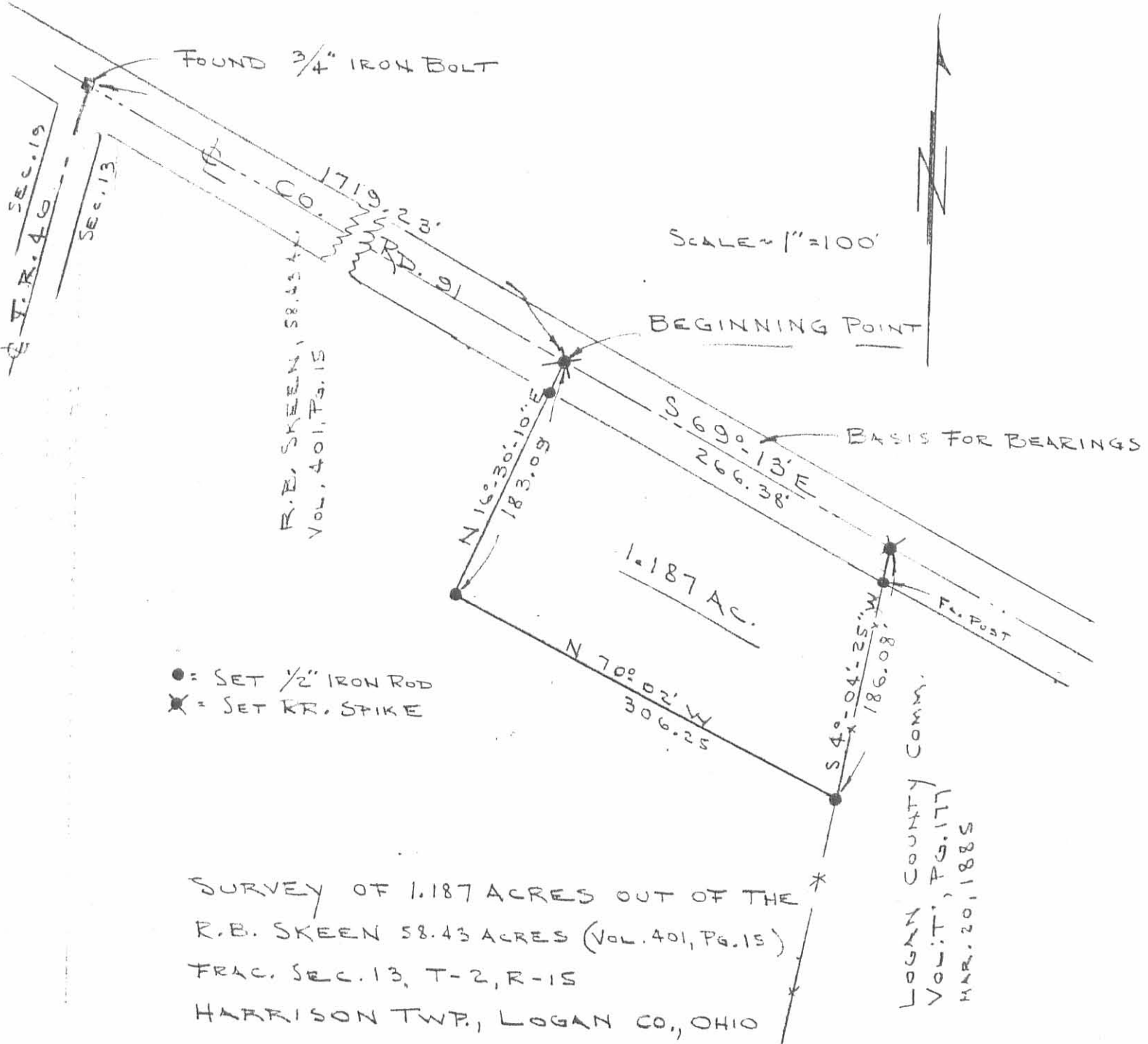
Clayton M. Lee
Registered Professional Surveyor No. 6181
February 24, 1987



ORIGINAL STAMP IN GREEN

This description prepared from an actual field survey.
Basis for bearings: Center-line of County Road 91 (S 69°-13' E).

INDEXED ON MAP
7606 2D



- = SET 1/2" IRON ROD
- ✕ = SET RR. SPIKE

SURVEY OF 1.187 ACRES OUT OF THE
 R. B. SKEEN 58.43 ACRES (VOL. 401, PG. 15)
 FRAC. SEC. 13, T-2, R-15
 HARRISON TWP., LOGAN CO., OHIO

By: *Jeffrey I. Lee*
 JEFFREY I. LEE
 REG. SURVEYOR 6359
 FEB. 19, 1987

INDEXED ON MAP
 7606 2P