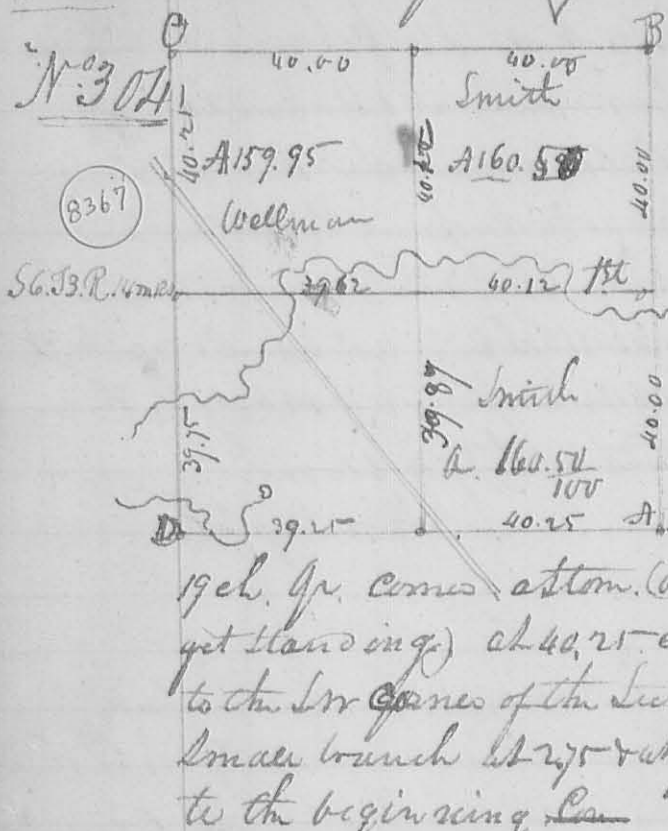


230

Jan 4 1836

N^o 304



Surveyed Jan 15. 1836 for Michael Smith & Wellman 56.72
 R 12 M. R. S. as follows Beginning at the
 S. E. corner thereof see letter A. at
 attem, thence N¹/₂ E 80 chain, cup
 ing a small branch at 43.25 to the
 N. E. corner of the section, thence
 80 chain to the N. W. corner of the section,
 then South 80 ch. cupping Big road at
 19 ch. gr. comes attem. (one of the original corners trees, a Bl. O.
 yet standing) at 40.25 ending a branch at 57.75 one at 77.75
 to the N. W. corner of the section, thence ~~79.25~~ 79.25 ch. 50 ch. cupping a
 small branch at 27.50 at 7 ch. gr. comes at 39.25 & Big road
 to the beginning, &c.

Division First Beginning at a stake in a prairie on the East line
 of the section, 160 poles from either corner, thence N 89¹/₂ W 79.75
 cupping a small branch at 7 ch. interior corner a Red oak 18¹/₂
 N 18¹/₂ W Links at 40.12, branch at 58 ch. road at 61 ch. to the
 orig. gr. comes on the West line of the section at attem in
 a County road, 161 poles from the N. W. corner of the section -
 Second division line begins at the original quarter section
 comes on the South line of the section (one of the bearing trees down,
 marked a White Oak) 2¹/₂ S 11¹/₂ E 10¹/₂ links (marked
 161 poles from the S. E. corner of the section, thence N³/₄ E
 80 ch. cupping a Big road line, interior corner of the gr. at a
 bar, at 39.87 cupping a branch at 46.50 to a Hickory 18¹/₂
 N 8¹/₂ W 43 links, a White Oak, 15¹/₂ S 25¹/₂ E 48 links, in the
 North line of the section, for the contents of each lot see
 the plat -

George Rhodes }
 S. J. Margis } chmn } D. Hopkins County Surveyor
 S. C.

N^o 305 Sub. divided the following survey for E. B. & W. M.
 Mela gg to tract Beginning at 2¹/₂ Bush & Ironwood
 in the line of a lot sold by S. Latham to S. M. then
 Mitchell thence with his line N 78¹/₂ E 95 poles to 2¹/₂ Bush

8368