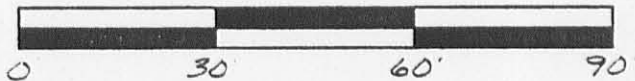
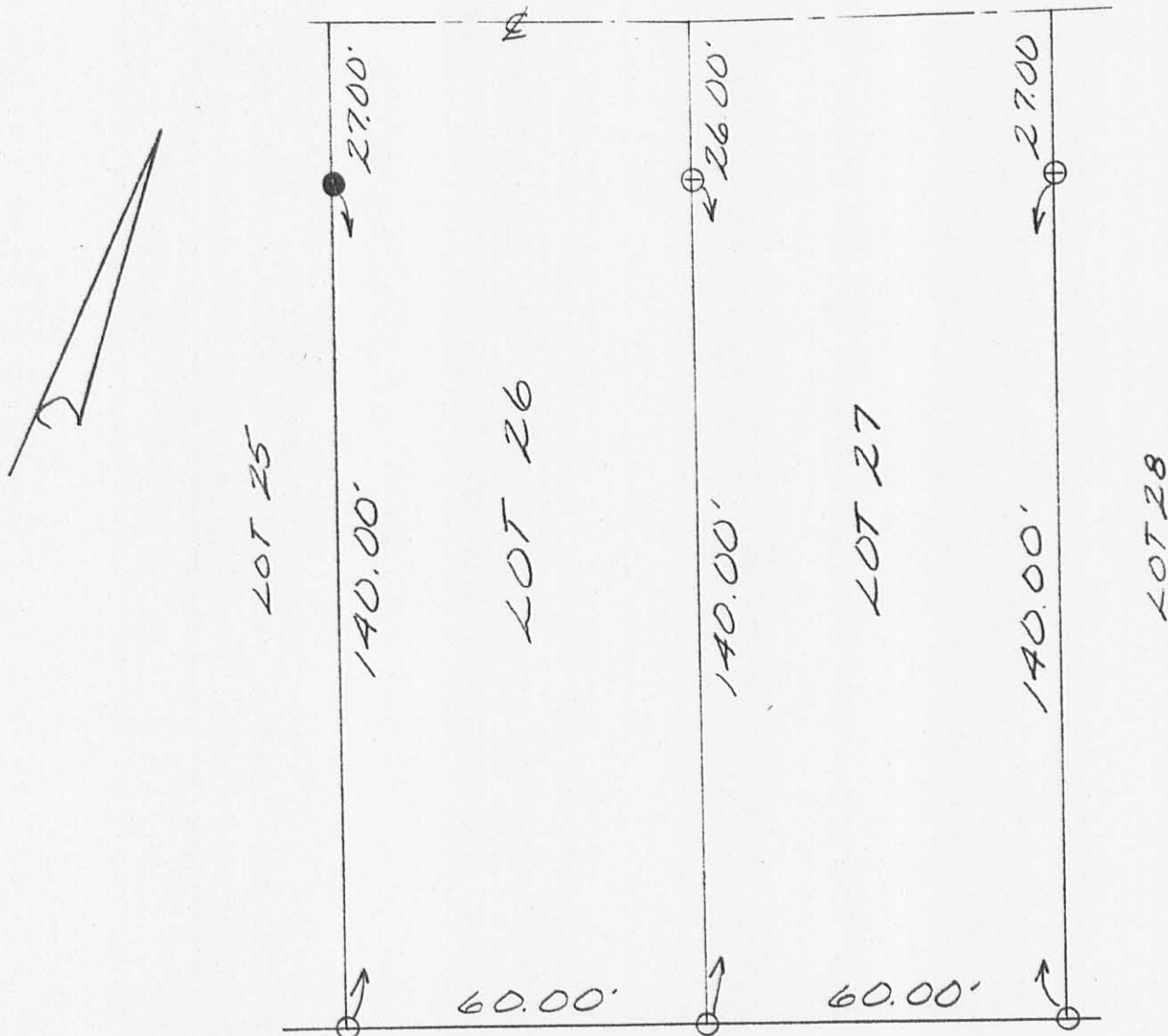


SCALE 1" = 30'



FLAT BRANCH



LEGEND:
● = 5/8 INCH IRON BAR SET
○ = 5/8 INCH IRON BAR FOUND

LOGAN ROAD

SURVEY OF LOTS 26 AND 27 IN
OHIO VALLEY COURT IN
SECTION 7, TOWN 2, RANGE 15,
HARRISON TOWNSHIP, LOGAN
COUNTY, OHIO FOR RAY
OSBORNE ON AUGUST 25, 1992.



INDEXED ON MAP
8735 1P

Leslie H. Geeslin
LESLIE H. GEESLIN
RUSHSVLVANIA, OH
(513) 468-2793