

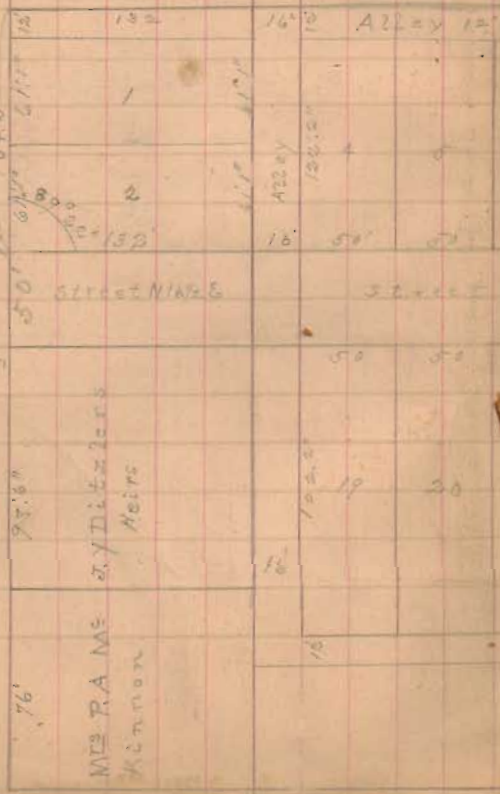
Cent path track

124
125
126
127
128
129
130
131
132
133
134
135
136
137
138
139
140

First Lot 110 88.

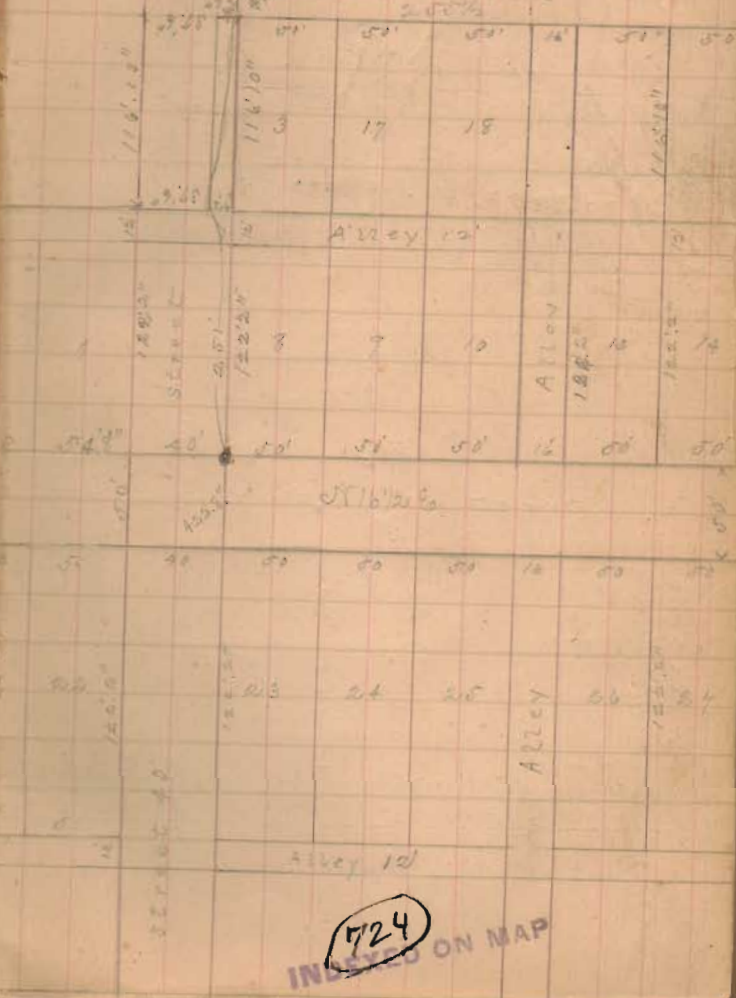
Hunterville

Chas Heron

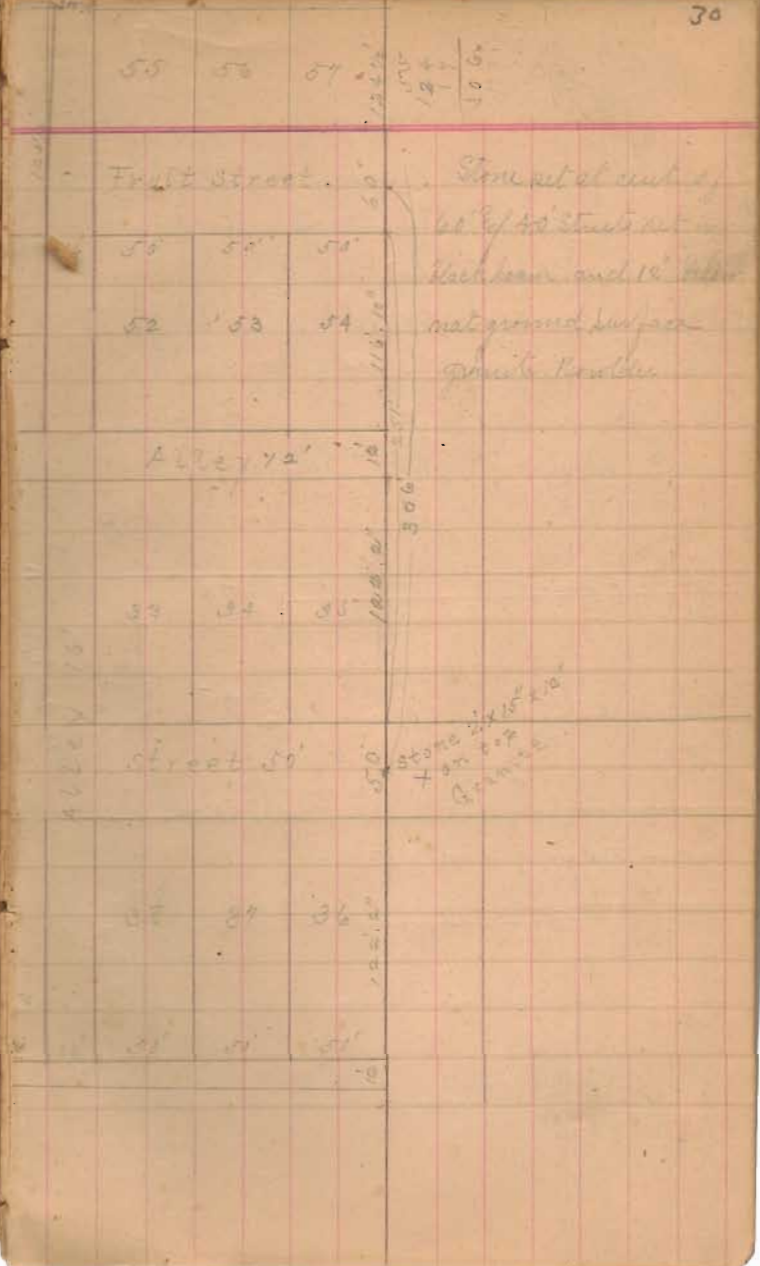
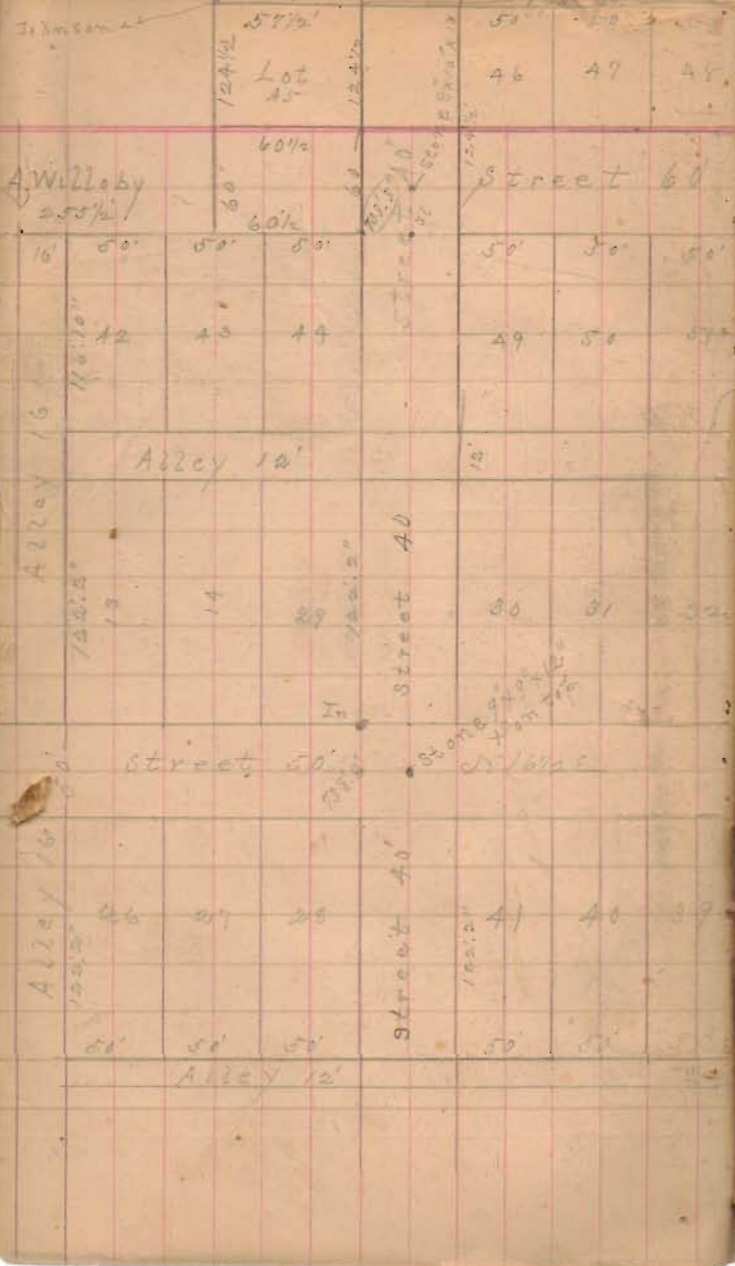


124
125
126
127
128
129
130
131
132
133
134
135
136
137
138
139
140

208 - 208 1/2 + 46
Andy Wulzoby
208 1/2



724
INDEXED ON MAP



Stone set at center
 of 40' Street set
 back from and 10' below
 mat ground surface
 granite Boulder

Stone 9' x 15' x 10'
 + 27' x 27'
 granite

cont 134W Ry

Alley

A Wilbey 1.16a

Fruit Street

B.

Johnson 1a

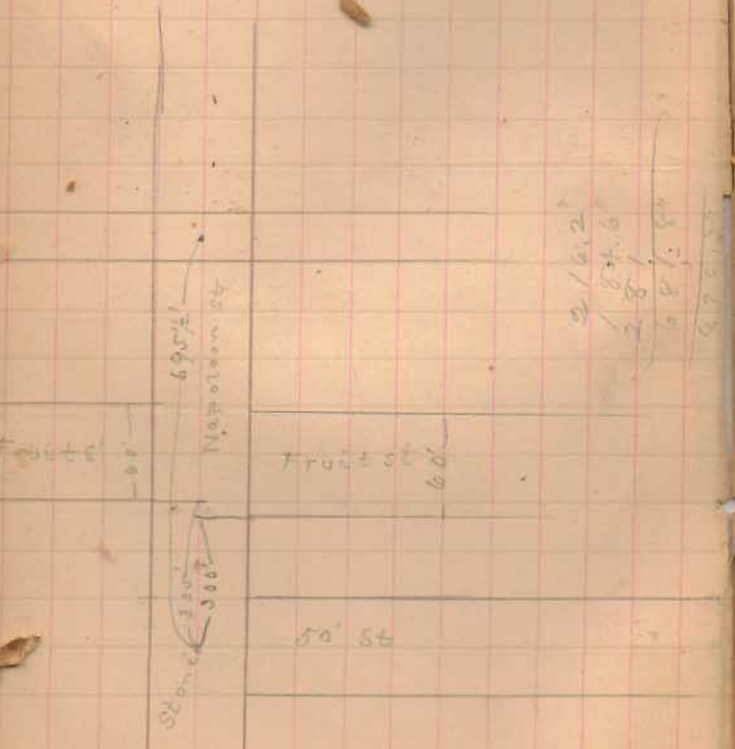
192.5'



Street 40

Measure 17th Street

Measure from point on main track C. & N. Ry.
 to East side of 17th Street on Nap St 695 1/2'
 From curv. R. R. to east side Fruit St. North
 = 695 1/2' - 300 = 395 1/2' =
 same South = 695 1/2' - 300 = 395 1/2'



2 16.2
 1 84.6
 2 81
 6 87.5
 6 95.1

Lat 6.00. Oct 13-83

Linn Ward Linn

Start at stone ang of road cut = to
Eyer ²/₃ / ²/₃ Culp.

with road S 86 1/2 E 10.00 ch to stone
in cut road = Ward & King

16 links W of
Linn B. Start at stone in road = to
Ward & King thence with old fence
S 8 E, at 10.00 fall 33 links W of
fence, dip too small for 1/4 on 10 ch
at 10.22 on fence pass on side of block
oral tree 3 1/2 di and on E side 1 1/2 oral
stump 3 di, correct corner for fence N 9 E
13.5 ch outlet chan at SW = of lake, x end fence
and 1 chain west of surface of water in lake
and 1 chain east of line as cut by King fence
west line.

ditch at outlet about 6' deep.

Course of road stone at ang road = fence
and culp to = King & Archer S 86 1/4 E

Linn P. Start at quar line < SW = J. Miller
E / S E = G. Patterson

S 86 1/2 E 9 1/2 ch south
at 10.00 pass old cor stone or or = to
Linn Ward & King tract

at 30 3/4 chain line as cut to by King
and line cut straight from here to S. end lake

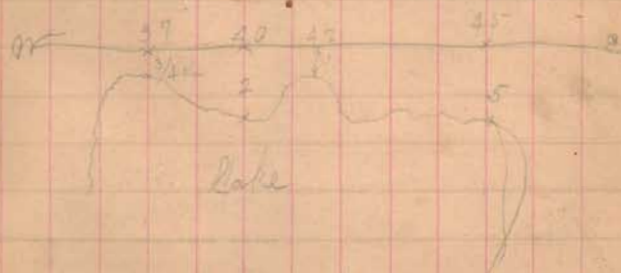
at 37.00 ch old fence on side of Ward & King
3/4 chain north of margin water in lake

38 1/4 ch chain from cut S 1/2 ch N of lake

40.00 yr line = 2 ch N of lake

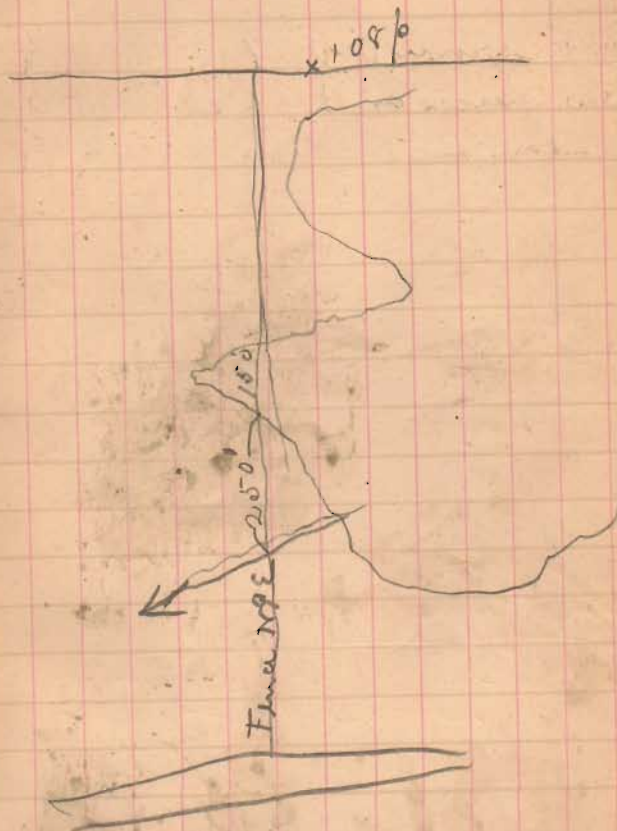
42.00 lake 1 ch south

45.00 " 4 " " and N E = lake



Oct 22 - 88

Ward and King
Course of RR cul from N
Junc S side lake N 1/4 E
Course from N end of Ward and
King Junc at S side lake N 13/4 E
to stake at NE Ward at 108 p.

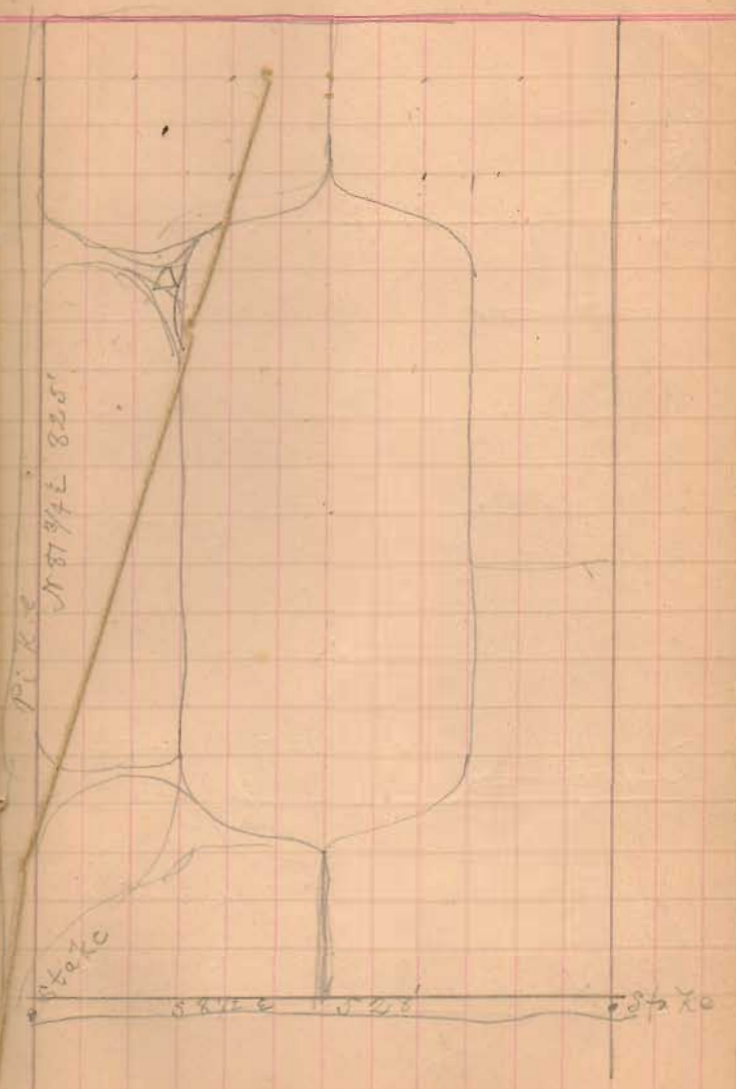


April 28 - 89

course of pike N 87 3/4 E 507.

" " M. Road N 8 1/2 W 327.

A. R. Lambert & Co. owners
S. S. Johnson

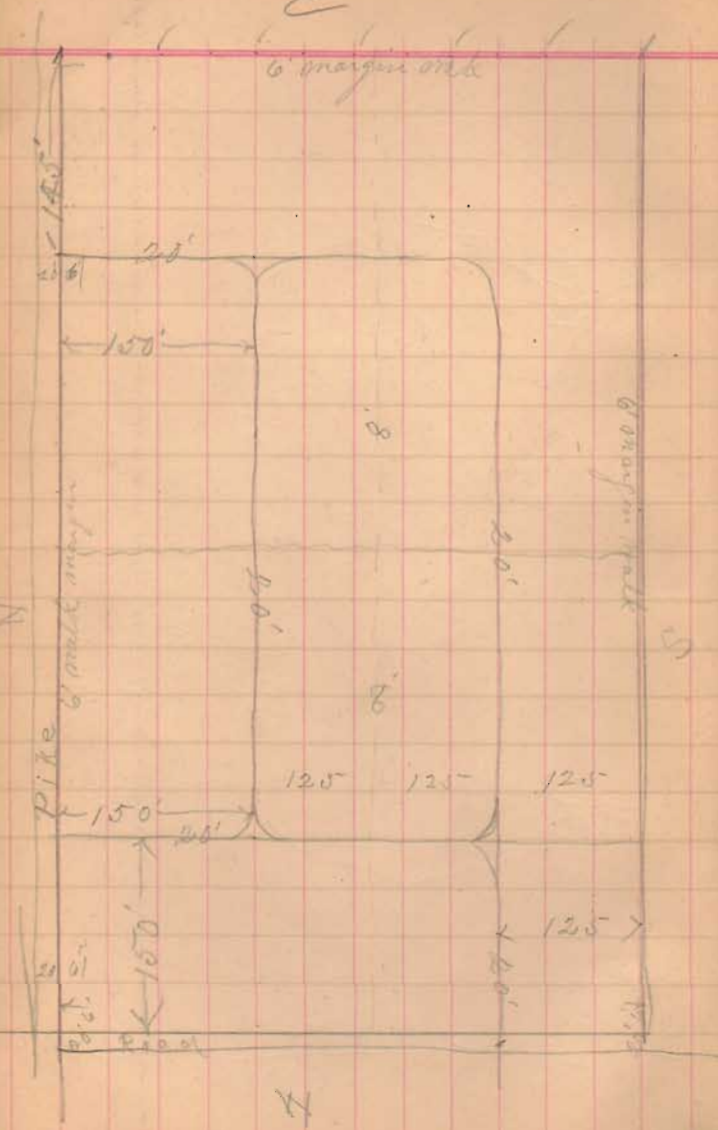


16.12.20

Polino field grass 3 x 10
lots E 18, 20 T 22.
N/S 12, 16 - 18, 20-22

E

6 margin walk



N