

Wilmont Terrace
Huntsville, O.

6+00.0

1/2" Iron pin set

0+15.0

1/2" Iron pin set

0+00

1/2" Pipe Set @ Neal Ave

Dodson
Richardson
Sweeney
Cobby

July 8, 1952
26

This corner
in oats field
did not find

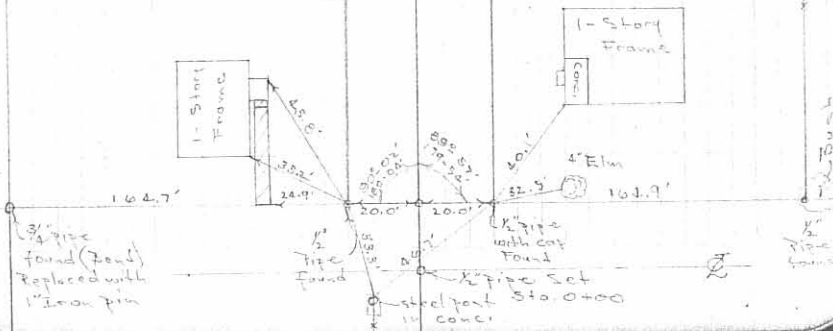
1" pipe
Found

1/2" Pipe
Found

1 1/2" pipe
Found
W. side cor.
Found

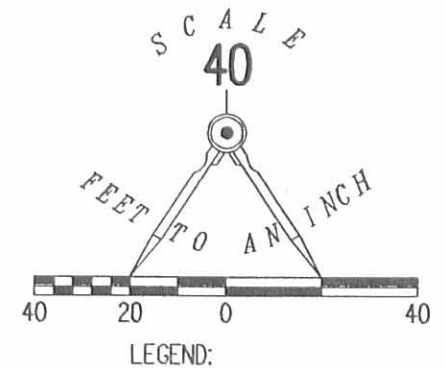
2124 2P

INDEXED ON MAP



REC'D 9-19-08 SML/GK

JANICE K. WOLFORD, TRUSTEE
1.41 ACRES
O.R. 524, PG. 675



WILLIAM H. JOLLIFF
3.074 ACRES
O.R. 805, PG. 236

RETRACEMENT SURVEY OF THE
 JIM K. COOPER AND
 KIM S. COOPER
 LOT NO. 114 AND NORTH HALF OF LOT NO. 112
 WRENS ALLOTMENT
 PLAT CABINET A, SLIDE 277
 OFFICIAL RECORD 927, PAGE 400
 VILLAGE OF HUNTSVILLE
 McARTHUR TOWNSHIP
 LOGAN OUNTY, OHIO

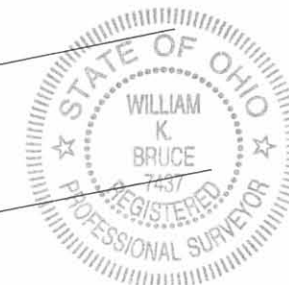
SURVEYED BY:

William K. Bruce

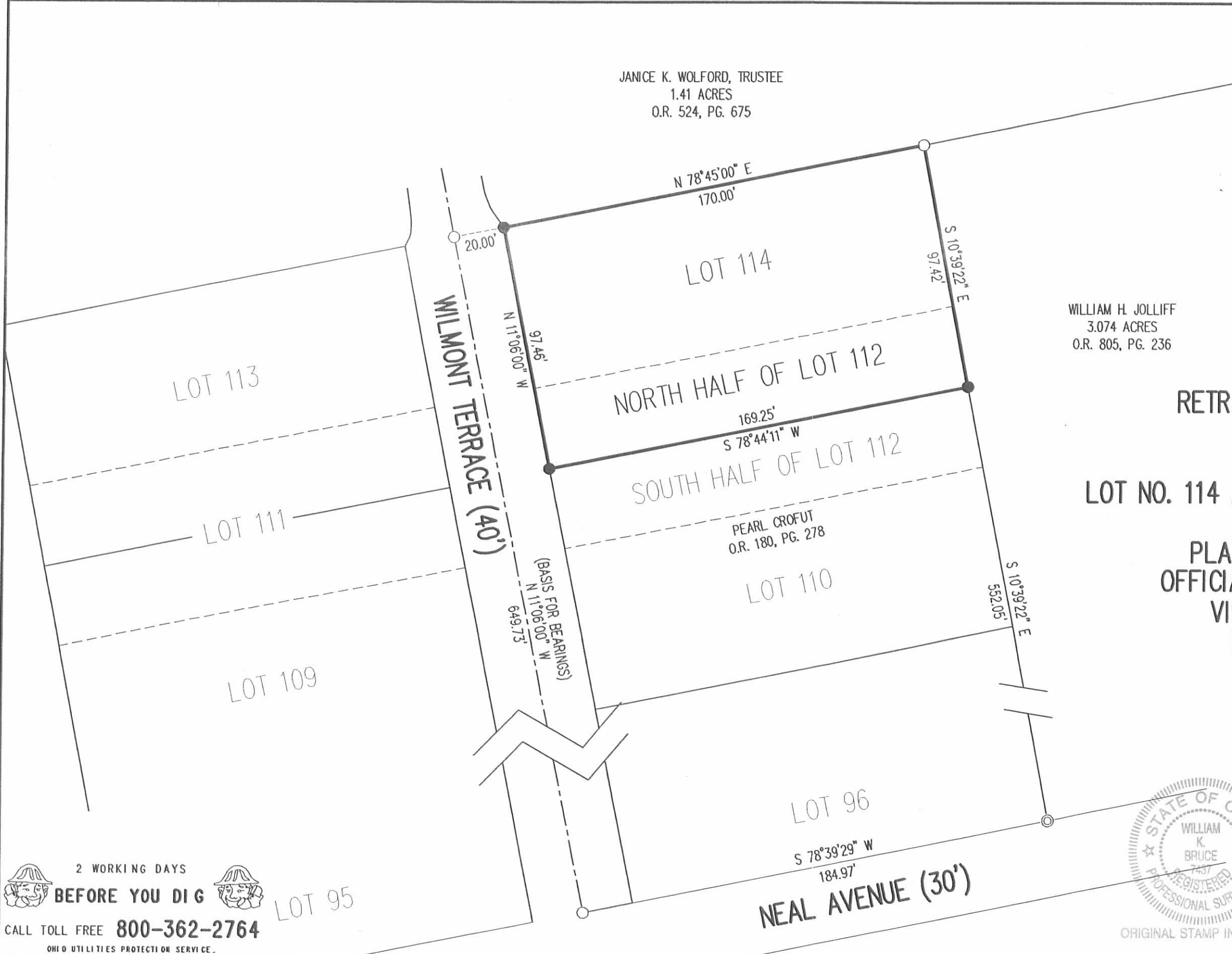
WILLIAM K. BRUCE
PROFESSIONAL SURVEYOR 7437
SEPTEMBER 17, 2008

COPYRIGHT 2008 BY:
 LEE SURVEYING & MAPPING CO., INC.
 117 North Madriver Street
 BELLEFONTAINE, OHIO 43311
 (937) 593-7335
 surveys@lsminc.us

KSS D0908 4702098 L-4702-3



ORIGINAL STAMP IN GREEN



2 WORKING DAYS
 BEFORE YOU DIG
 CALL TOLL FREE 800-362-2764
 OHIO UTILITIES PROTECTION SERVICE

LOT 95

INDEXED ON MAP
2124 1P

FB 699

Wilmont Terrace
Huntsville, O.

6+64.8 1/2" Iron pin Set

0+15.0 1/2" Iron pin Set

0+00 1/2" Pipe Set @ Neal Ave

Dodson
Richardson
Sweeney
Gibby

July 8, 1952

26

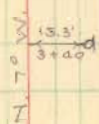


This corner
in oats field
did not find

1" Pipe
Found

1" Pipe
Found

1 1/2" Pipe
Found
W. side 400
feet



2+06 @ 10' Drive

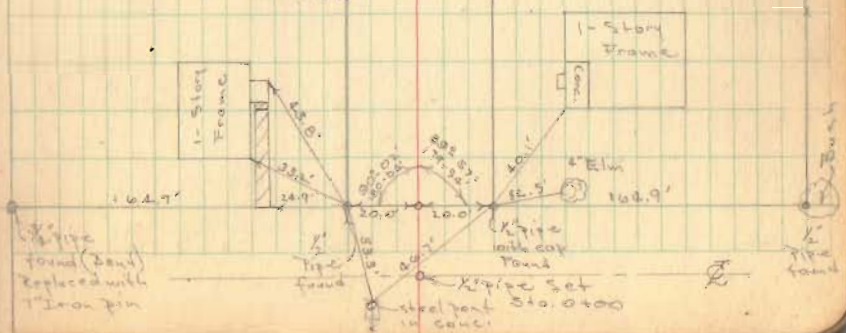


2+02 @ Drive
10'



2124

INDEXED ON MAP



1 1/2" Pipe
Found (bow)
Replaced with
1" Iron pin

1" Pipe
Found

1 1/2" Pipe
with cap
Found
1 1/2" Pipe Set
Sta. 0+00
Steel post
in corner

1 1/2" Pipe
Found