

REC'D 9-19-00 5M OK V

# Lee Surveying and Mapping Co., Inc.

Land Surveys • Topography • Subdivisions • Construction Layout

117 N. Madriver St.  
Bellefontaine OH 43311



Phone: (937) 593-7335  
Fax: (937) 593-7444

## EVANS 6.369 ACRES TRACT A

Lying in Virginia Military Surveys 9903 and 9928, Village of Huntsville, McArthur Township, Logan County, Ohio.

Being part of the remainder of the John Robb Evans original 2.24 acre tract and the remainder of the original one acre and 26 poles tract as deeded and described in Volume 292, Page 427, all of the original 0.570 acre tract and the remainder of the original 4.280 acre tract as deeded and described in Volume 285, Page 469, Parcels 1 and 2, part of the original 0.34 acre tract, and all of the 0.328 acre tract as deeded and described in Official Record 23, Page 734, Tracts I and II of the Logan County Records of Deeds and being more particularly described as follows:

Beginning at a MAG nail set at the intersection of the center-lines of State Route 117 (Lima Street, 60 feet wide) and Township Road 221 (60 feet wide).

THENCE, with the center-line of Township Road 221 and the Huntsville Corporation Line, N 75°-42'-01" W, a distance of 609.20 feet to a MAG nail set at the intersection of the center-line of Township Road 221 and the east line of the Dayton Power and Light Company 116.500 acre tract (O.R. 329, Pg. 713, Parcel 5).

THENCE, with the east line of the said 116.500 acre tract, N 17°-54'-58" E, a distance of 863.61 feet to a 5/8 inch iron rod set, passing a 5/8 inch iron rod set at 30.06 feet.

THENCE, with the south line of the Thomas W. Shotts 0.32 acre tract (Vol. 379, Pg. 55), N 83°-53'-37" E, a distance of 48.90 feet to a 5/8 inch iron rod set.

THENCE, S 6°-43'-45" E, a distance of 88.92 feet to a 5/8 inch iron rod set.

THENCE, N 82°-13'-00" E, a distance of 161.42 feet to a MAG nail set, passing a 5/8 inch iron rod set at 131.42 feet.

THENCE, with the center-line of Lima Street, and the east line of Virginia Military Surveys 9903 and 9928, S 6°-37'-00" E, a distance of 60.00 feet to a MAG nail set.

THENCE, with the north line of the Duane I. Davis, Trustee 0.37 acre tract (O.R. 173, Pg. 258), S 82°-13'-00" W, a distance of 162.00 feet to a 5/8 inch iron rod set, passing a 5/8 inch iron rod set at 30.00 feet.

THENCE, with the west lines of the said 0.37 acre tract, the John J. Foreman 0.31 acre tract (O.R. 452, Pg. 836) and the James W. Harpst 0.31 acre tract (Vol. 309, Pg. 261), S 6°-03'-45" E, a distance of 261.67 feet to a 5/8 inch iron rod set.

THENCE, with the north line of the Duane I. Davis, Trustee 0.77 acre tract (O.R. 173, Pg. 257), S 83°-03'-00" W, a distance of 35.50 feet to a 5/8 inch iron rod set.

THENCE, with the west line of the said 0.77 acre tract, S 6°-37'-00" E, a distance of 168.00 feet to a 5/8 inch iron rod set.

THENCE, with the south line of the said 0.77 acre tract, N 83°-03'-00" E, a distance of 200.00 feet to a MAG nail set, passing a 5/8 inch iron rod set at 170.00 feet.

THENCE, with the center-line of Lima Street, and the east line of Virginia Military Surveys 9903 and 9928, S 6°-37'-00" E, a distance of 425.06 feet to the TRUE POINT OF BEGINNING.

Containing 6.369 acres of which 0.723 acre is within the highway rights-of-way.

INDEXED ON MAP  
2986 1D-1

# Lee Surveying and Mapping Co., Inc.

Land Surveys • Topography • Subdivisions • Construction Layout

117 N. Madriver St.  
Bellefontaine OH 43311



Phone: (937) 593-7335  
Fax: (937) 593-7444

The basis for bearings is the center-line of Lima Street being S 6°-37'-00" E, and all other bearings are from angles and distances measured in a field survey by Lee Surveying and Mapping Co., Inc. on July 20, 2000.



Description prepared by:

A handwritten signature in black ink, appearing to read 'J. Lee', is written over the typed name and title.

Jeffrey J. Lee  
Professional Surveyor 6359  
August 10, 2000

L-2997

INDEXED ON MAP  
2386 ID-2

REC'D 9-19-00 SMJ OKV

# Lee Surveying and Mapping Co., Inc.

Land Surveys • Topography • Subdivisions • Construction Layout

117 N. Madriver St.  
Bellefontaine OH 43311



Phone: (937) 593-7335  
Fax: (937) 593-7444

## EVANS 0.321 ACRE TRACT B

Lying in Virginia Military Surveys 9903 and 9928, Village of Huntsville, McArthur Township, Logan County, Ohio.

Being part of the remainder of the John Robb Evans original 2.24 acre tract as deeded and described in Volume 292, Page 427 of the Logan County Records of Deeds and being more particularly described as follows:

Beginning at a MAG nail set at the intersection of the center-lines of State Route 117 (Lima Street, 60 feet wide) and Township Road 221 (60 feet wide).

THENCE, with the center-line of Lima Street, and the east line of Virginia Military Surveys 9903 and 9928, N 6°-37'-00" W, a distance of 917.06 feet to a MAG nail set at the TRUE POINT OF BEGINNING.

THENCE, S 82°-13'-00" W, a distance of 161.42 feet to a 5/8 inch iron rod set, passing a 5/8 inch iron rod set at 30.00 feet.

THENCE, N 6°-43'-45" W, a distance of 88.92 feet to a 5/8 inch iron rod set.

THENCE, with the south lines Thomas W. Shotts 0.32 acre tract (Vol. 379, Pg. 55), and the Michael F. Glock 0.283 acre tract (O.R. 290, Pg. 914), N 83°-53'-37' E, a distance of 161.57 feet to a MAG nail set, passing a 5/8 inch iron rod set at 131.57 feet.

THENCE, with the center-line of Lima Street, and the east line of Virginia Military Surveys 9903 and 9928, S 6°-37'-00" E, a distance of 84.19 feet to the place of beginning.

Containing 0.321 acre of which 0.058 acre is within the highway right-of-way.

The basis for bearings is the center-line of Lima Street being S 6°-37'-00" E, and all other bearings are from angles and distances measured in a field survey by Lee Surveying and Mapping Co., Inc. on August 24, 2000.

Description prepared by:



ORIGINAL STAMP IN GREEN

*Jeffrey I. Lee*  
Jeffrey I. Lee  
Professional Surveyor 6359  
August 30, 2000

L-2997

INDEXED  
2306 10-3

REV'D 9-25-00 BML OK ✓

# Lee Surveying and Mapping Co., Inc.

Land Surveys • Topography • Subdivisions • Construction Layout

117 N. Madriver St.  
Bellefontaine OH 43311



Phone: (937) 593-7335  
Fax: (937) 593-7444

## DAYTON POWER AND LIGHT COMPANY 3.223 ACRES

Lying in Virginia Military Surveys 9903 and 9928, Village of Huntsville, McArthur Township, Logan County, Ohio.

Being out of the Dayton Power and Light Company original 116.500 acre tract as deeded and described in Official Record 329, Page 713, Parcel 5 of the Logan County Records of Deeds and being more particularly described as follows:

Beginning at a MAG nail set at the intersection of the center-lines of State Route 117 (Lima Street, 60 feet wide) and Township Road 221 (60 feet wide).

THENCE, with the center-line of Township Road 221 and the Huntsville Corporation Line, N 75°-42'-01" W, a distance of 609.20 feet to a MAG nail set at the intersection of the center-line of Township Road 221 and the west line of the John Robb Evans original 0.57 acre tract (O.R. 285, Pg. 469, Parcel I) at the TRUE POINT OF BEGINNING.

THENCE, with the center-line of Township Road 221 and the Huntsville Corporation Line, N 67°-32'-04" W, a distance of 100.31 feet to a MAG nail set at the southeast corner of the remainder of the Lawrence McCullough original 32.90 acre tract (O.R. 36, Pg. 763).

THENCE, with the lines of the remainder of the said original 32.90 acre tract, the Huntsville-Indian Lake Lions Club, Inc. 6.494 acre tract (O.R. 379, Pg. 559), the Marvin Dee Spring 1.02 acre tract (Vol. 356, Pg. 646) and the John E. Doss 0.15 acre tract (Vol. 373, Pg. 452, Parcel II), N 17°-54'-58" E, a distance of 1581.63 feet to a MAG nail set, passing 5/8 inch iron rod set at 1509.39 feet.

THENCE, with the west line of Virginia Military Survey 9903 and 9928 and the center-line of Lima Street (60 feet wide), S 6°-37'-00" E, a distance of 240.84 feet to a MAG nail set.

THENCE, with the lines of the County Commissioners of Logan County, Ohio 0.107 acre tract (O.R. 133, Pg. 537, Parcel 12), the John M. Cooper 0.042 acre tract (O.R. 275, Pg. 459), the John M. Cooper 0.123 acre and remainder of the 0.295 acre tracts (Vol. 404, Pg. 239, Tracts I and II), the Michael F. Glock 0.283 acre tract (O.R. 290, Pg. 914), the Thomas W. Shotts, an estate for life, remainder to David E. Shotts 0.32 acre tract (Vol. 379, Pg. 55), the John Robb Evans original 2.24 acre tract (Vol. 292, Pg. 427), the John Robb Evans original 1.0 acre and 26 poles (Vol. 292, Pg. 427), the John Robb Evans original 4.280 acre tract (O.R. 285, Pg. 469, Parcel 2), the John Robb Evans original 0.34 acre tract (O.R. 23, Pg. 734, Tract I) and the John Robb Evans original 0.57 acre tract (O.R. 285, Pg. 469, Parcel I), S 17°-54'-58" W, a distance of 1370.48 feet to the point of beginning.

Containing 3.389 acres of which 0.235 acre is within the highway right-of-way.

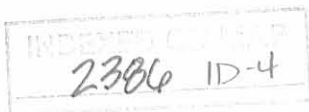
The basis for bearings is the center-line of Lima Street being S 6°-37'-00" E, and all other bearings are from angles and distances measured in a field survey by Lee Surveying and Mapping Co., Inc. on August 24, 2000.

Description prepared by:

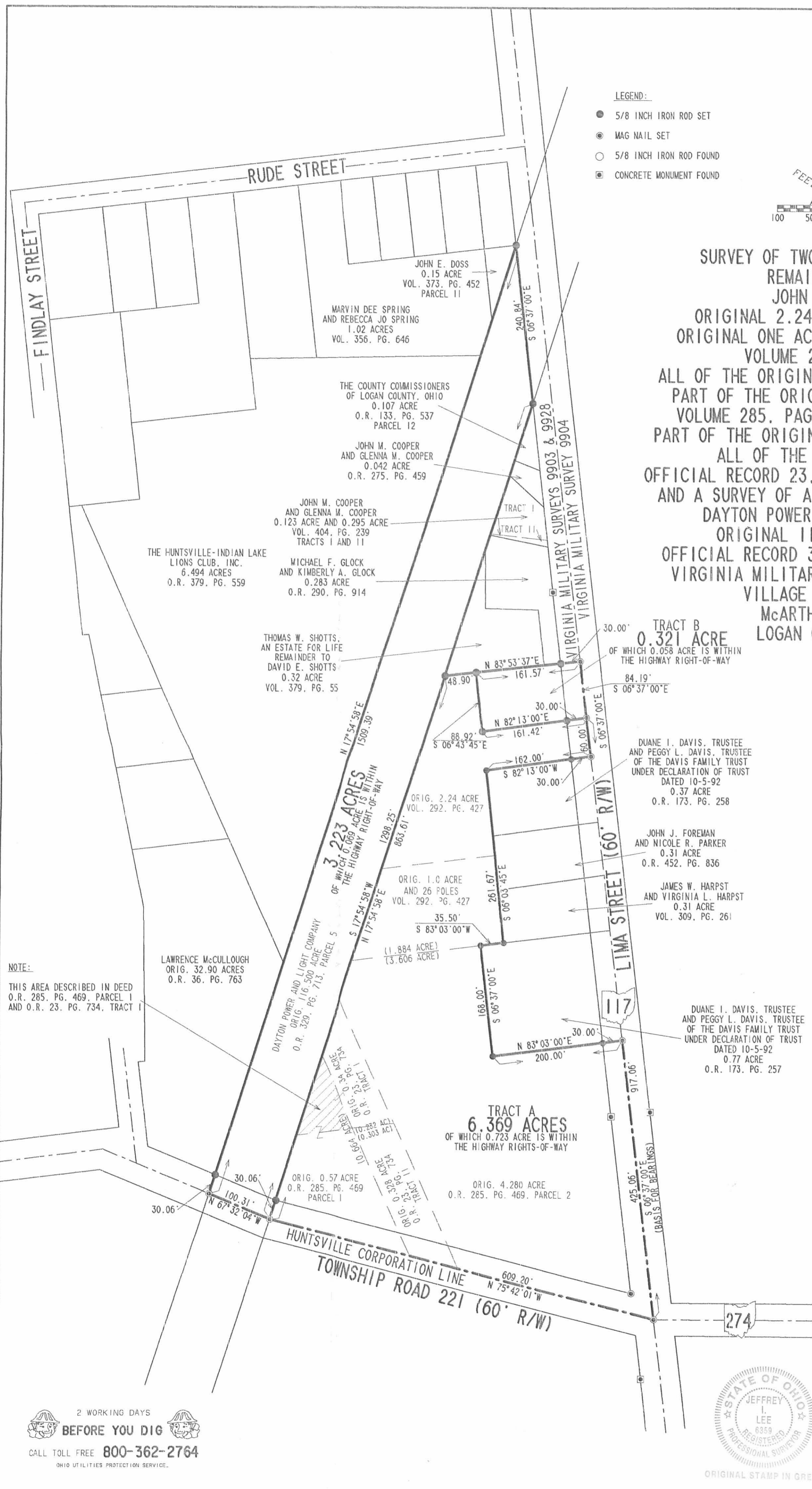
Jeffrey I. Lee  
Professional Surveyor 6359  
August 30, 2000



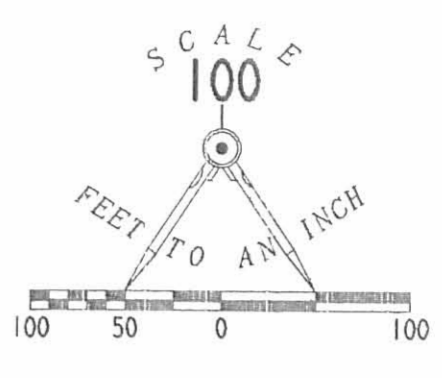
ORIGINAL STAMP IN GREEN-2997







- LEGEND:
- 5/8 INCH IRON ROD SET
  - MAG NAIL SET
  - 5/8 INCH IRON ROD FOUND
  - CONCRETE MONUMENT FOUND



SURVEY OF TWO TRACTS OUT OF THE REMAINDER OF THE JOHN ROBB EVANS ORIGINAL 2.24 ACRE TRACT AND THE ORIGINAL ONE ACRE AND 26 POLES TRACT VOLUME 292, PAGE 427. ALL OF THE ORIGINAL 0.570 ACRE TRACT AND PART OF THE ORIGINAL 4.280 ACRE TRACT VOLUME 285, PAGE 469, PARCELS 1 & 2. PART OF THE ORIGINAL 0.34 ACRE TRACT AND ALL OF THE 0.328 ACRE TRACT OFFICIAL RECORD 23, PAGE 734, TRACTS I & II AND A SURVEY OF A 3.223 ACRES OUT OF THE DAYTON POWER AND LIGHT COMPANY ORIGINAL 116.500 ACRE TRACT OFFICIAL RECORD 329, PAGE 713, PARCEL 5 VIRGINIA MILITARY SURVEYS 9903 & 9928 VILLAGE OF HUNTSVILLE McARTHUR TOWNSHIP LOGAN COUNTY, OHIO

NOTE:  
THIS AREA DESCRIBED IN DEED O.R. 285, PG. 469, PARCEL 1 AND O.R. 23, PG. 734, TRACT I

2 WORKING DAYS  
**BEFORE YOU DIG**  
CALL TOLL FREE **800-362-2764**  
OHIO UTILITIES PROTECTION SERVICE.



SURVEYED BY:  
*Jeffrey I. Lee*  
JEFFREY I. LEE  
PROFESSIONAL SURVEYOR 6359  
JULY 20, 2000  
AUGUST 24, 2000

COPYRIGHT 2000 BY:  
**LEE SURVEYING & MAPPING CO., INC.**  
117 North Madriver Street  
BELLEFONTAINE, OHIO 43311  
(937) 593-7335  
D 275 HUNTLION L-2997-2

2300 IP

Received 4.25.01 OK gell

# Lee Surveying and Mapping Co., Inc.

Land Surveys • Topography • Subdivisions • Construction Layout

117 N. Madriver St.  
Bellefontaine OH 43311



Phone: (937) 593-7335  
Fax: (937) 593-7444

## HUNTSVILLE LIONS CLUB 0.144 ACRE TRACT

Lying in Virginia Military Surveys 9903 and 9928, Village of Huntsville, McArthur Township, Logan County, Ohio.

Being out of the Huntsville-Indian Lake Lions Club original 6.369 acre tract as deeded and described in Official Record 476, Page 546, Tract A of the Logan County Records of Deeds and being more particularly described as follows:

Beginning at a MAG nail set at the intersection of the center-lines of State Route 117 (Lima Street, 60 feet wide) and Township Road 221 (60 feet wide).

THENCE, with the center-line of Lima Street, and the east line of Virginia Military Surveys 9903 and 9928, N 6°-37'-00" W, a distance of 917.06 feet to a MAG nail set.

THENCE, S 82°-13'-00" W, a distance of 161.42 feet to a 5/8 inch iron rod set at THE TRUE POINT OF BEGINNING, passing a 5/8 inch iron rod set at 30.00 feet.

THENCE, S 82°-13'-00" W, a distance of 90.72 feet to a 5/8 inch iron rod set

THENCE, with the east line of the Dayton Power and Light Company original 116.500 acre tract (O.R. 329, Pg. 713, Parcel 5), N 17°-54'-58" E, a distance of 100.25 feet to a 5/8 inch iron rod set.

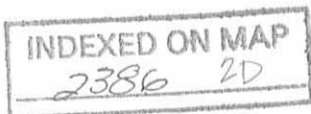
THENCE, with the south line of the Thomas W. Shotts 0.32 acre tract (Vol. 379, Pg. 55), N 83°-53'-37" E, a distance of 48.90 feet to a 5/8 inch iron rod set.

THENCE, with the west line of the Huntsville-Indian Lake Lions Club 0.321 acre tract (O.R. 476, Pg. 546, Tract B), S 6°-43'-45" E, a distance of 88.92 feet to the point of beginning.

Containing 0.144 acre.

The basis for bearings is the center-line of Lima Street being S 6°-37'-00" E, and all other bearings are from angles and distances measured in a field survey by Lee Surveying and Mapping Co., Inc. on August 24, 2000.

Description prepared by:



Jeffrey I. Lee  
Professional Surveyor 6359  
April 18, 2001



ORIGINAL STAMP IN GREEN L-2997

DAYTON POWER & LIGHT CO.  
 ORIG. 116.500 ACRE TRACT  
 O.R. 329. PG. 713. PARCEL 5

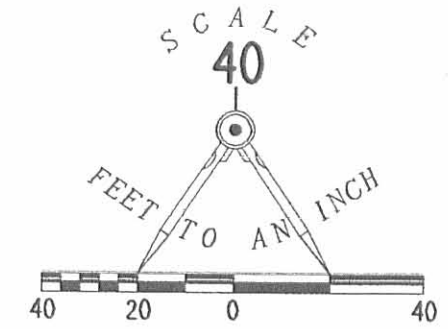
THOMAS W. SHOTTS  
 AN ESTATE FOR LIFE  
 REMAINDER TO  
 DAVID E. SHOTTS  
 0.32 ACRE TRACT  
 VOL. 379. PG. 55

THE HUNTSVILLE-INDIAN LAKE  
 LIONS CLUB  
 0.321 ACRE TRACT  
 O.R. 476. PG. 546  
 TRACT B

THE HUNTSVILLE-INDIAN LAKE  
 LIONS CLUB  
 6.369 ACRE TRACT  
 O.R. 476. PG. 546  
 TRACT A

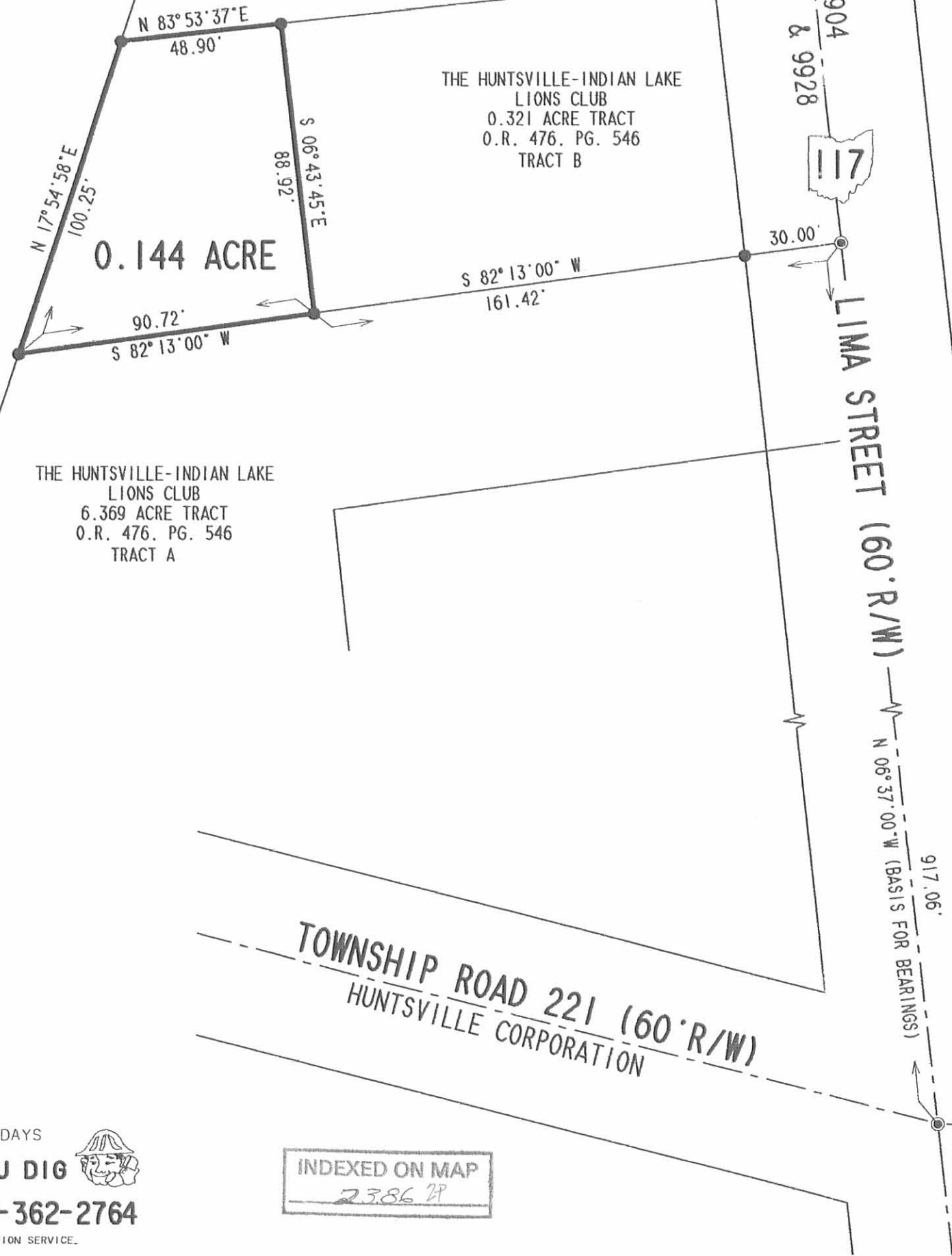
0.144 ACRE

BOUNDARY SURVEY OF A 0.144 ACRE TRACT  
 OUT OF THE HUNTSVILLE-INDIAN LAKE LIONS CLUB  
 ORIGINAL 6.369 ACRE TRACT  
 OFFICIAL RECORD 476. PAGE 546. TRACT A  
 VIRGINIA MILITARY SURVEY 9903 & 9928  
 VILLAGE OF HUNTSVILLE  
 McARTHUR TOWNSHIP  
 LOGAN COUNTY, OHIO



LEGEND

- 5/8 IRON ROD SET
- ⊙ MAG NAIL SET



ORIGINAL STAMP IN GREEN

SURVEYED BY:  
  
 JEFFREY I. LEE  
 PROFESSIONAL SURVEYOR 6359  
 APRIL 18, 2001

COPYRIGHT 2001 BY:  
 LEE SURVEYING & MAPPING CO., INC.  
 117 North Madriver Street  
 BELLEFONTAINE, OHIO 43311  
 (937) 593-7335

D-397 HNTL10N2.GCD HUNT10N.DAT L-2997-3

2 WORKING DAYS  
**BEFORE YOU DIG**  
 CALL TOLL FREE **800-362-2764**  
 OHIO UTILITIES PROTECTION SERVICE

INDEXED ON MAP  
 2386 H

274



REC'D 8-18-00 SMY RK ✓

# Lee Surveying and Mapping Co., Inc.

Land Surveys • Topography • Subdivisions • Construction Layout

117 N. Madriver St.  
Bellefontaine OH 43311



Phone: (937) 593-7335  
Fax: (937) 593-7444

## EVANS 6.689 ACRES

Lying in Virginia Military Surveys 9903 & 9928, Village of Huntsville, McArthur Township, Logan County, Ohio.

Being the remainder of the John Robb Evans original 2.24 acre tract and the remainder of the original one acre and 26 poles tract as deeded and described in Volume 292, Page 427, all of the original 0.570 acre tract and the remainder of the original 4.280 acre tract as deeded and described in Volume 285, Page 469, Parcels 1 & 2, part of the original 0.34 acre tract, all of the 0.328 acre tract as deeded and described in Official Record 23, Page 734, Tracts I & II of the Logan County Records of Deeds and being more particularly described as follows:

Beginning at a MAG nail set at the intersection of the center-lines of State Route 117 (Lima Street, 60 feet wide) and Township Road 221 (60 feet wide).

THENCE, with the center-line of Township Road 221 and the Huntsville Corporation Line, N 75°-42'-01" W, a distance of 609.20 feet to a MAG nail set at the intersection of the center-line of Township Road 221 and the east line of the Dayton Power and Light Company 116.500 acre tract (O.R. 329, Pg. 713, Parcel 5).

THENCE, with the east line of the said 116.500 acre tract, N 17°-54'-58" E, a distance of 863.61 feet to a 5/8 inch iron rod set at the southwest corner of the Thomas W. Shotts 0.32 acre tract (Vol. 379, Pg. 55).

THENCE, with the south lines of the said 0.32 acre tract and the Michael F. Glock 0.283 acre tract (O.R. 290, Pg. 914), N 83°-53'-37" E, a distance of 210.47 feet to a MAG nail set, passing a 5/8 inch iron rod set at 180.47 feet.

THENCE, with the center-line of Lima Street, also being the east line of Virginia Military Surveys 9903 & 9928, S 6°-37'-00" E, a distance of 144.19 feet to a MAG nail set.

THENCE, with the north line of the Duane I. Davis, Trustee 0.37 acre tract (O.R. 173, Pg. 258), S 82°-13'-00" W, a distance of 162.00 feet to a 5/8 inch iron rod set, passing a 5/8 inch iron rod set at 30.00 feet.

THENCE, with the west lines of the said 0.37 acre tract, the John J. Foreman 0.31 acre tract (O.R. 452, Pg. 836) and the James W. Harpst 0.31 acre tract (Vol. 309, Pg. 261), S 6°-03'-45" E, a distance of 261.67 feet to a 5/8 inch iron rod set.

THENCE, with the north line of the Duane I. Davis, Trustee 0.77 acre tract (O.R. 173, Pg. 257), S 83°-03'-00" W, a distance of 35.50 feet to a 5/8 inch iron rod set.



# Lee Surveying and Mapping Co., Inc.

Land Surveys • Topography • Subdivisions • Construction Layout

117 N. Madriver St.  
Bellefontaine OH 43311



Phone: (937) 593-7335  
Fax: (937) 593-7444

THENCE, with the west line of the said 0.77 acre tract, S 6°-37'-00" E, a distance of 168.00 feet to a 5/8 inch iron rod set.

THENCE, with the south line of the said 0.77 acre tract, N 83°-03'-00" E, a distance of 200.00 feet to a MAG nail set, passing a 5/8 inch iron rod set at 170.00 feet.

THENCE, with the center-line of Lima Street, also being the east line of Virginia Military Surveys 9903 & 9928, S 6°-37'-00" E, a distance of 425.06 feet to the TRUE POINT OF BEGINNING.

Containing 6.689 acres of which 0.781 acre is within the highway rights-of-way.

The basis for bearings is the center-line of Lima Street being S 6°-37'-00" E, and all other bearings are from angles and distances measured in a field survey by Lee Surveying and Mapping Co., Inc. on July 20, 2000.

Description prepared by:

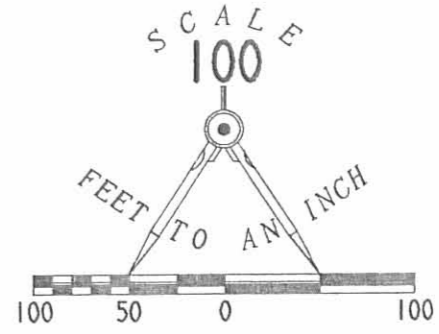
William K. Bruce  
Professional Surveyor 7437  
August 10, 2000



ORIGINAL STAMP IN GREEN

L-2997

2306 3D-2



LEGEND:

- 5/8 INCH IRON ROD SET
- MAG NAIL SET
- 5/8 INCH IRON ROD FOUND
- CONCRETE MONUMENT FOUND

SURVEY OF 6.689 ACRES OUT OF THE  
 JOHN ROBB EVANS  
 AND BEING THE REMAINDER OF  
 THE ORIGINAL 2.24 ACRE TRACT AND THE  
 ORIGINAL ONE ACRE AND 26 POLES TRACT  
 VOLUME 292, PAGE 427.  
 ALL OF THE ORIGINAL 0.570 ACRE TRACT AND  
 PART OF THE ORIGINAL 4.280 ACRE TRACT  
 VOLUME 285, PAGE 469, PARCELS 1 & 2,  
 PART OF THE ORIGINAL 0.34 ACRE TRACT AND  
 ALL OF THE 0.328 ACRE TRACT  
 OFFICIAL RECORD 23, PAGE 734, TRACTS 1 & 11  
 VIRGINIA MILITARY SURVEYS 9903 & 9928  
 VILLAGE OF HUNTSVILLE  
 McARTHUR TOWNSHIP  
 LOGAN COUNTY, OHIO

MICHAEL F. GLOCK  
 AND KIMBERLY A. GLOCK  
 0.283 ACRE  
 O.R. 290, PG. 914

THOMAS W. SHOTTS,  
 AN ESTATE FOR LIFE  
 REMAINDER TO  
 DAVID E. SHOTTS  
 0.32 ACRE  
 VOL. 379, PG. 55

DUANE I. DAVIS, TRUSTEE  
 AND PEGGY L. DAVIS, TRUSTEE  
 OF THE DAVIS FAMILY TRUST  
 UNDER DECLARATION OF TRUST  
 DATED 10-5-92  
 0.37 ACRE  
 O.R. 173, PG. 258

JOHN J. FOREMAN  
 AND NICOLE R. PARKER  
 0.31 ACRE  
 O.R. 452, PG. 836

JAMES W. HARPST  
 AND VIRGINIA L. HARPST  
 0.31 ACRE  
 VOL. 309, PG. 261

DUANE I. DAVIS, TRUSTEE  
 AND PEGGY L. DAVIS, TRUSTEE  
 OF THE DAVIS FAMILY TRUST  
 UNDER DECLARATION OF TRUST  
 DATED 10-5-92  
 0.77 ACRE  
 O.R. 173, PG. 257

DAYTON POWER AND LIGHT COMPANY  
 116.500 ACRES  
 O.R. 329, PG. 713, PARCEL 5

ORIG. 1.0 ACRE  
 AND 26 POLES  
 VOL. 292, PG. 427  
 35.50'  
 S 83°03'00"W

6.689 ACRES  
 OF WHICH 0.781 ACRE IS WITHIN  
 THE HIGHWAY RIGHTS-OF-WAY

ORIG. 0.57 ACRE  
 O.R. 285, PG. 469  
 PARCEL 1

ORIG. 4.280 ACRE  
 O.R. 285, PG. 469, PARCEL 2

NOTE:

THIS AREA DESCRIBED IN DEED  
 O.R. 285, PG. 469, PARCEL 1  
 AND O.R. 23, PG. 734, TRACT 1

2 WORKING DAYS  
**BEFORE YOU DIG**  
 CALL TOLL FREE 800-362-2764  
 OHIO UTILITIES PROTECTION SERVICE.

INDEXED ON MAP  
 2384 3P



SURVEYED BY:  
*William K. Bruce*  
 WILLIAM K. BRUCE  
 PROFESSIONAL SURVEYOR 7437  
 JULY 20, 2000

COPYRIGHT 2000 BY:  
 LEE SURVEYING & MAPPING CO., INC.  
 117 North Madriver Street  
 BELLEFONTAINE, OHIO 43311  
 (937) 593-7335  
 D 275 HUNTLION L-2997-2

Metzler Survey Huntsville 0.37 Acre ( North Tract ) Sept. 1947

The following described land in the Village of Huntsville Mc Arthur  
Township Logan County Ohio and being in V.M.S. 9903  
9928

Beginning in the center of State Highway Number 130 ( U.S.Route 33 )  
midway between two concrete Right-of-way posts at station 269 plus 00  
as shown on Logan County Engineer's Plan L - 27 Page 6 thence with the  
center of State Highway Number 130 S.  $6^{\circ} - 37'$  E. 255.60 feet for the  
beginning point of this survey said point being the S.E. corner of the  
Ruth Evans land ( also known as the Herren land ) thence with the South  
side of said Evans land S.  $82^{\circ} - 13'$  W. 162.00 feet to a steel post at  
an interior corner of the Evans land the last described line passing a stake  
at the West side of the State highway at 30.00 feet thence with the  
present fence line and the East side of the Evans land S.  $6^{\circ} - 04'$  E. 100.00  
feet to a stake thence N.  $82^{\circ} - 13'$  E. 162.95 feet to the center of State  
Highway Number 130 the last described line passing a pipe at the West side  
of State Highway Number 130 at 132.95 feet thence with the center of  
State Highway Number 130 N.  $6^{\circ} - 37'$  W. 100.00 feet to the place of beginning  
said tract containing 0.37 of one acre.

2386 4D

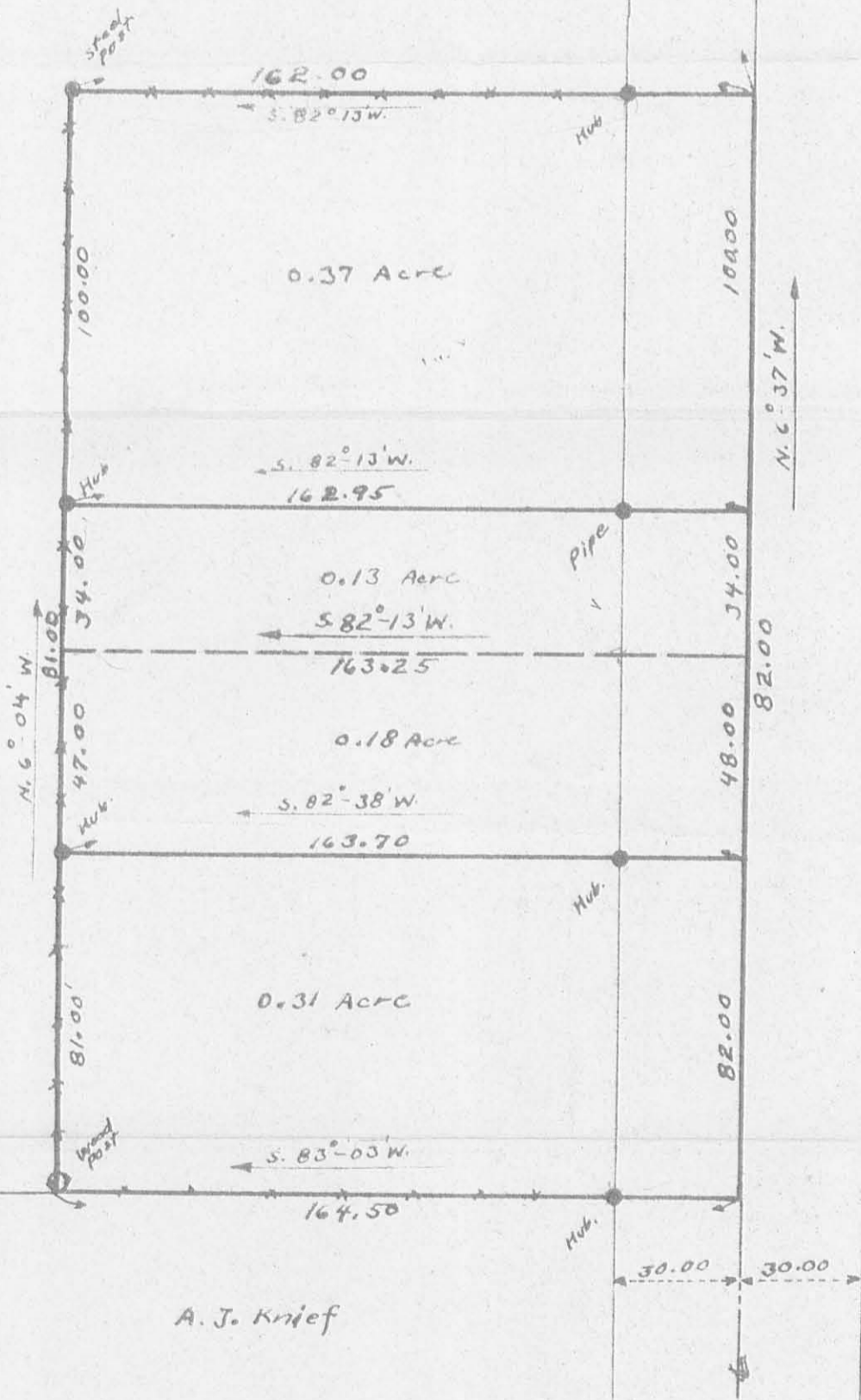


Concrete R/W Post  
Sta. 269+00  
Logan County Engineer's  
Plan L-27 Page 6



RUTH EVANS  
(HEIRREN)

State Highway # 130  
U.S. Route 33  
Lima Road.



Note:-  
0.13 Acre tract  
and 0.18 acre tract  
have been combined  
into one description  
for 0.31 Acre tract.

37  
13  
50  
49

Book FW-18  
Pages 161-163

FW  
34  
MSF

A. J. Krief



METZLER SURVEY  
HUNTSVILLE OHIO  
M<sup>c</sup>ARTHUR TOWNSHIP  
LOGAN COUNTY

V.M.S. 9903  
9928

1" = 40'

F.F. WRIGHT

INDEXED ON MAP

INDEXED ON MAP

4386

SEPT. 1947



4-19-16

# Lee Surveying and Mapping Co., Inc.



**APPROVED**

Land Surveys • Topography • Subdivisions • Construction Layout

117 N. Madriver St.  
Bellefontaine OH 43311



Phone: (937) 593-7335  
Fax: (937) 593-7444  
surveys@lsminc.us

## BEAVER TRACT A 1.104 ACRES

Lying in Virginia Military Survey 9904, Village of Huntsville, McArthur Township, Logan County, Ohio.

Being out of the James Beaver and Renae Beaver 2.206 acre tract as deeded and described in Official Record 1212, Page 928 of the Logan County Records of Deeds and being more particularly described as follows:

Beginning on a point on the intersection of the center-lines of Ohio Route 117 and Ohio Route 274, referenced by a MAG nail found bearing S 65°-34'-13"E, a distance of 0.53 feet.

THENCE, with the center-line of Ohio Route 117 (variable right of way widths), N 06°-44'-48"W, a distance of 209.76 feet to a point.

THENCE, with the south line of the Travis G. Franks 0.123 acre tract (O.R. 492, Pg. 678, Tract I), N 82°-44'-03"E, a distance of 227.66 feet to a 5/8 inch iron rod set, passing a 5/8 inch iron rod found at 30.00 feet.

THENCE, S 06°-44'-48"E, a distance of 212.74 feet to a MAG nail set on the center-line of Ohio Route 274 and a south line of the Village of Huntsville Corporation, passing a 5/8 inch iron rod set at 182.74 feet.

THENCE, with the center-line of Ohio Route 274 (variable right of way widths) and a south line of the Village of Huntsville Corporation, S 83°-29'-00"W, a distance of 227.65 feet to the point of beginning.

Containing 1.104 acres, of which 0.391 acre is within the highway rights-of-way.

Property is subject to any and all previous easements and rights-of-way of record.

The basis for bearings is the center-line of Ohio Route 274, being S 83°-29'-00"W, and all other bearings are from angles and distances measured in a field survey by Lee Surveying and Mapping Co., Inc. on April 5, 2016.



ORIGINAL STAMP IN GREEN

Description prepared by:

William K. Bruce  
Professional Surveyor 7437  
April 6, 2016

34740216

INDEXED ON MAP  
2386 5D1

4-19-16

# Lee Surveying and Mapping Co., Inc.



Land Surveys • Topography • Subdivisions • Construction Layout

117 N. Madriver St.  
Bellefontaine OH 43311



Phone: (937) 593-7335  
Fax: (937) 593-7444  
surveys@lsminc.us

## BEAVER TRACT B 1.104 ACRES

Lying in Virginia Military Survey 9904, Village of Huntsville, McArthur Township, Logan County, Ohio.

Being out of the James Beaver and Renae Beaver 2.206 acre tract as deeded and described in Official Record 1212, Page 928 of the Logan County Records of Deeds and being more particularly described as follows:

Commencing on a point on the intersection of the center-lines of Ohio Route 117 and Ohio Route 274, referenced by a MAG nail found bearing S 65°-34'-13"E, a distance of 0.53 feet.

THENCE, with the center-line of Ohio Route 274 (variable right-of-way widths), N 83°-29'-00"E, a distance of 227.65 feet to a MAG nail set at the TRUE POINT OF BEGINNING.

THENCE, N 06°-44'-48"W, a distance of 212.74 feet to a 5/8 inch iron rod set, passing a 5/8 inch iron rod set at 30.00 feet.

THENCE, with the lines of the Travis G. Franks 0.123 acre tract (O.R. 492, Pg. 678, Tract I), the following two courses:

N 82°-44'-03"E, a distance of 119.06 feet to a 5/8 inch iron rod found.

N 06°-32'-25"W, a distance of 14.41 feet to a 1/2 inch iron pipe found.

THENCE, with the south line of the Virginia Ruth Goodwin 0.29 acre tract (O.R. 917, Pg. 295), N 83°-16'-14"E, a distance of 100.24 feet to a 1/2 inch iron pipe found.

THENCE, with the west lines of the James A. Grider, Jr., Lot 116 of Myers Addition (PC A, SL 331) (O.R. 254, Pg. 253), a 16.5 feet wide alley and the Elaine S. Sidders 0.61 acre tract (O.R. 742, Pg. 814), S 06°-09'-00"E, a distance of 229.08 feet to a MAG nail found on the center-line of Ohio Route 274 and a south line of the Village of Huntsville Corporation, passing a 5/8 inch iron rod found at 199.41 feet.

THENCE, with the center-line of Ohio Route 274 and a south line of the Village of Huntsville Corporation, S 83°-29'-00"W, a distance of 216.97 feet to the point of beginning.

Containing 1.104 acres, of which 0.150 acre is within the highway right-of-way.

Property is subject to any and all previous easements and rights-of-way of record.

The basis for bearings is the center-line of Ohio Route 274, being S 83°-29'-00"W, and all other bearings are from angles and distances measured in a field survey by Lee Surveying and Mapping Co., Inc. on April 5, 2016.



ORIGINAL STAMP IN GREEN

Description prepared by:

*William K. Bruce*

William K. Bruce  
Professional Surveyor 7437  
April 6, 2016

34740216

INDEXED ON MAP

2386 5D2

MEMBER: NATIONAL SOCIETY OF PROFESSIONAL SURVEYORS (NSPS)  
PROFESSIONAL LAND SURVEYORS OF OHIO (PLSO)

4-19-14

**APPROVED**

**LEGEND:**

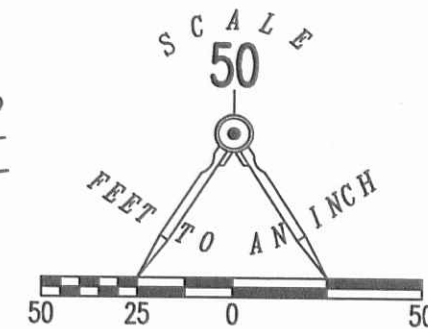
- ⊙ MAG NAIL FOUND
- ⊙ MAG NAIL SET
- ⊙ 1/2 INCH IRON PIPE FOUND
- ⊕ CONCRETE R/W MONUMENT FOUND
- 5/8 INCH IRON ROD FOUND
- 5/8 INCH IRON ROD SET WITH PLASTIC I.D. CAP STAMPED "LSM 7437"

TRAVIS G. FRANKS  
0.548 ACRE  
O.R. 492, PG. 678  
TRACT III

VIRGINIA RUTH GOODWIN  
0.29 ACRE  
O.R. 917, PG. 295

TRAVIS G. FRANKS  
0.123 ACRE  
O.R. 492, PG. 678  
TRACT I

**MYERS ADDITION**  
PLAT CABINET A, SLIDE 331



JAMES A. GRIDER, JR.  
O.R. 254, PG. 253

16.5' ALLEY

TRACT B  
**1.104 ACRES**  
OF WHICH 0.150 ACRE IS WITHIN THE  
HIGHWAY RIGHT-OF-WAY

TRACT A  
**1.104 ACRES**  
OF WHICH 0.391 ACRE IS WITHIN THE  
HIGHWAY RIGHTS-OF-WAY

**SURVEY OF TWO TRACTS OUT OF THE  
JAMES BEAVER AND  
RENAE BEAVER  
2.206 ACRE TRACT  
OFFICIAL RECORD 1212, PAGE 928  
VIRGINIA MILITARY SURVEY 9904  
VILLAGE OF HUNTSVILLE  
McARTHUR TOWNSHIP  
LOGAN COUNTY, OHIO**

ELAINE S. SIDDEERS  
0.61 ACRE  
O.R. 742, PG. 814

VILLAGE OF HUNTSVILLE CORPORATION LINE  
(VARIABLE WIDTHS)

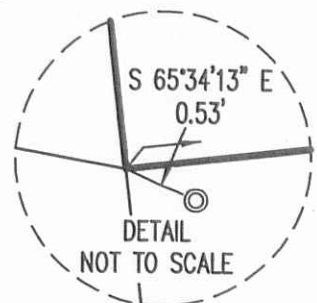
T.R. 221  
STATION 649+91  
SEE DETAIL

THIS SURVEY WAS PREPARED IN THE ABSENCE OF  
A COMPLETE AND ACCURATE TITLE SEARCH AND  
DOES NOT GUARANTEE TITLE.

2 WORKING DAYS  
**BEFORE YOU DIG**

CALL TOLL FREE **800-362-2764**

OHIO UTILITIES PROTECTION SERVICE



ORIGINAL STAMP IN GREEN

SURVEYED BY:

*William K. Bruce*  
WILLIAM K. BRUCE  
PROFESSIONAL SURVEYOR 7437  
APRIL 5, 2016

COPYRIGHT 2016 BY:  
**LEE SURVEYING & MAPPING CO., INC.**  
117 North Madriver Street  
BELLEFONTAINE, OHIO 43311  
(937) 593-7335  
WWW.LSMINC.US  
surveys@lsminc.us

KSS D0216 34740216 L-3474-3

INDEXED ON MAP  
2386 5P