

SURVEY OF RAILROAD PROPERTY
HUNTSVILLE, OHIO

FB 702

FOR THE VILLAGE OF HUNTSVILLE

- A = $\frac{3}{4}$ " pipe Found
- B = $\frac{1}{2}$ " pipe Found
- C = $\frac{1}{2}$ " Bar Found
- D = $\frac{3}{4}$ " pipe Set
- E = $\frac{1}{2}$ " Pipe Found
- F = $\frac{3}{4}$ " Pipe Set
- G = " " "
- H = 1" Pipe Found
- I = $\frac{3}{4}$ " Pipe Set
- J = " " " = "B" pg 40
- K = " " " 50' W. of E Main Track
- L = " " " " " " "

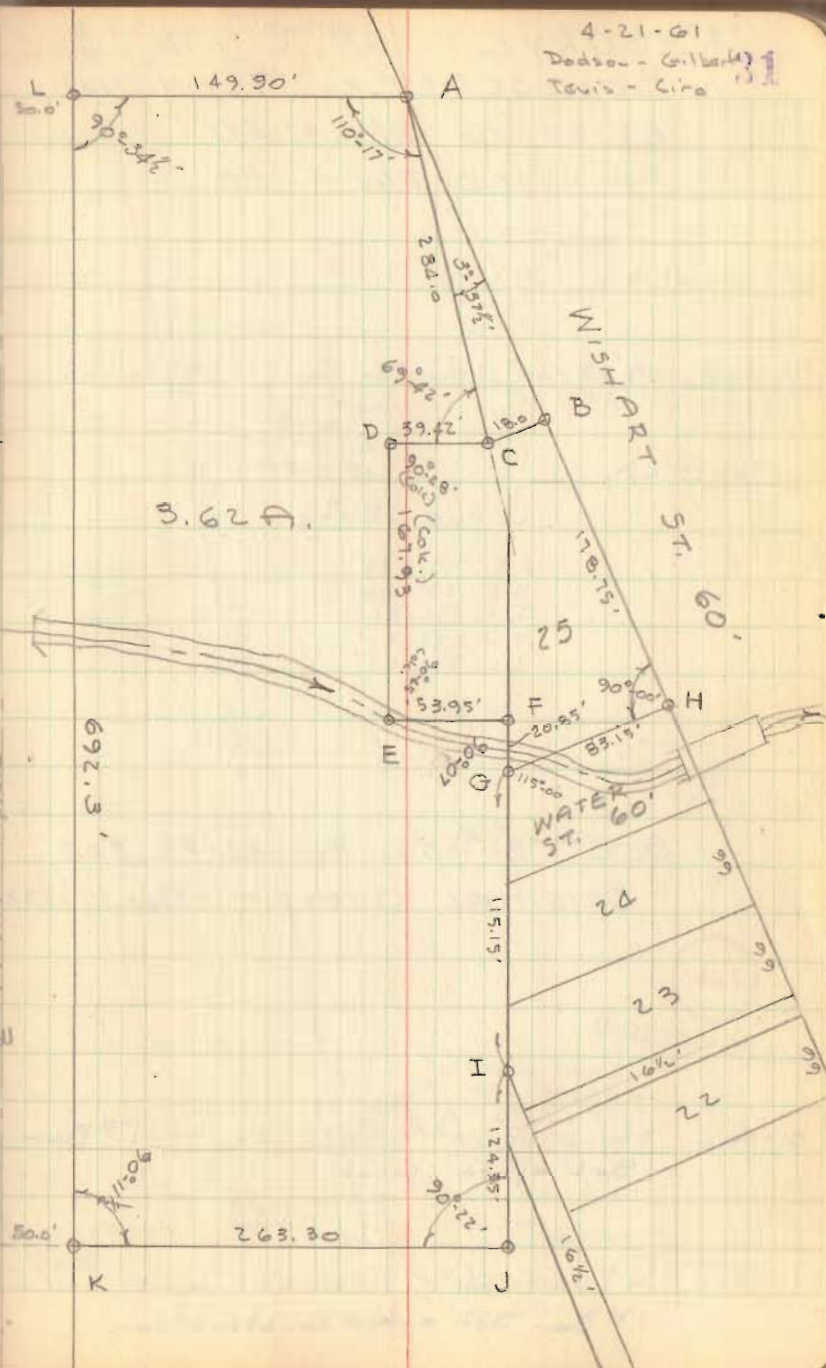
RAN RANDOM LINE FROM D TO E

SEE PG 40 THIS BOOK FOR
DETAIL "E-F-G-H-J"

SEE F.B. # 493, PG. 25

3462

INDEXED ON MAP



FB 702

HUNTSVILLE SURVEY
CONT'D FROM PG. 31

- A = 1/2" ϕ Bar found - Cor. T. Bailey
- B = 3/4" Pipe Set, on line A-C
- C = 1/2" ϕ Bar Found - Cor. T. Bailey
- D = 5/8" Bar Found - set by D.L.D.
- E = 5/8" Bar Found - " " " ϵ = 16 1/2' Alley
- F = 3/4" Pipe Set - on Line D-E
- G = 1" Pipe Found - "P" in FB# 493/25
- H = 3/4" pipe Set on Line "F-B"
- I = 3/4" pipe Set - ("D" - FB# 493/25) (Did not find pin. as indicated)
- J = 3/4" pipe Set on Line "H-F" & "K-L"
- K = 3/4" ϕ Bar Found - "N" FB# 493/25
- L = 3/4" ϕ Found in Creek - "M" FB 493/25

USED LINE C-A AS N. LINE OF
R.R. PROPERTY

Dodson
Tewis
Cira

5-11-61

40

