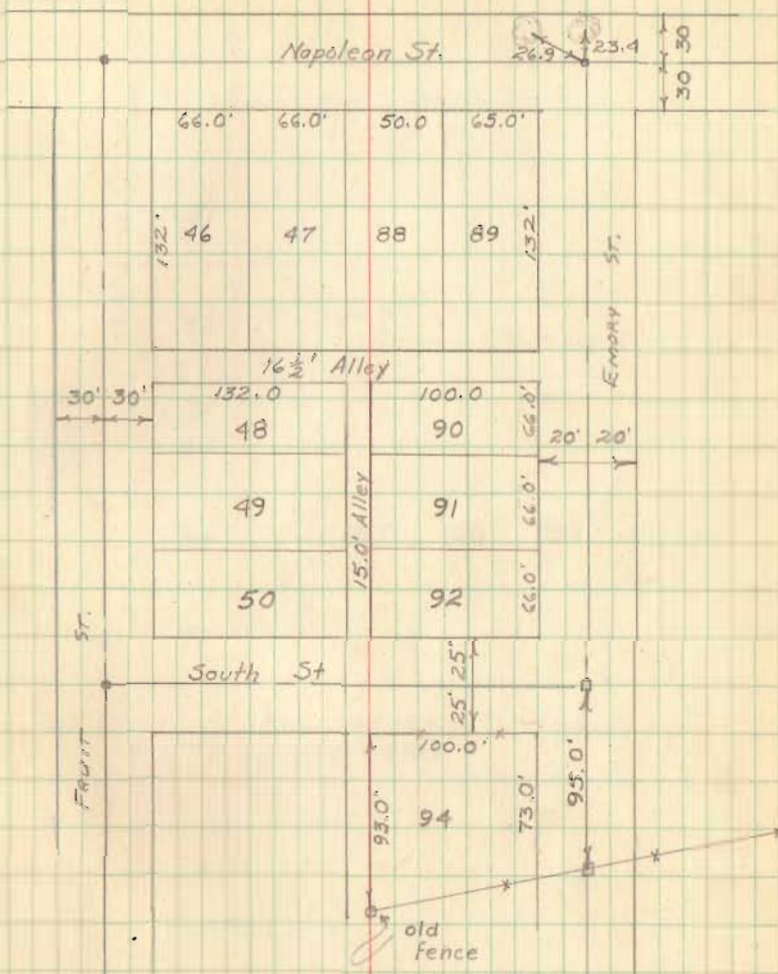


Huntsville on Ground

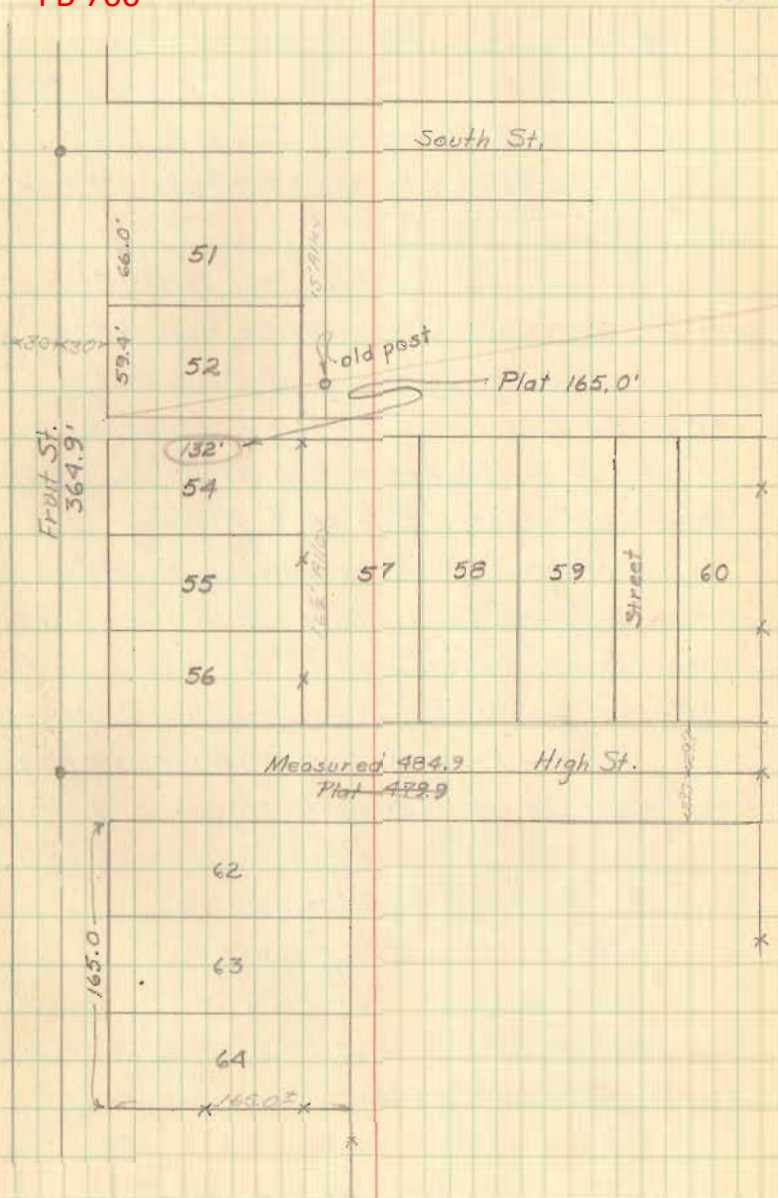
8-3-56

Shirk
Nichols
Craig
Raby 22

FB 700



Note: Lots 46, 47, 88 & 89 should be 127.0',
& the "W" side of 94 should be 98 1/2', & the
"E." side 76 1/2' according to Plat.



SURVEY OF TOWER ADDITION
TO
VILLAGE OF HUNTSVILLE

FB 708

- A = 3/4" IRON BAR SET
- B = 3/4" IRON BAR SET
- C = 1" IRON BAR SET
- D = 1" IRON BAR SET
- E = POINT BETWEEN 5/8" # BARS FO

SUMMARY

THE CENTERLINE OF NAPOLEON AND
FRUIT STREETS WAS DETERMINED BY
SIDEWALK SPLITS. EMORY AND SOUTH
STREET WERE MADE PARALLEL WITH
NAP. & FRUIT. DISTANCES WERE
DETERMINED BY N & S - E.F.W.
DISTANCE TO POINT E.

4367

INDEXED ON MAP

GEEGLIN 85° ±
SOURS
RICKETTS AUGUST, 1973

