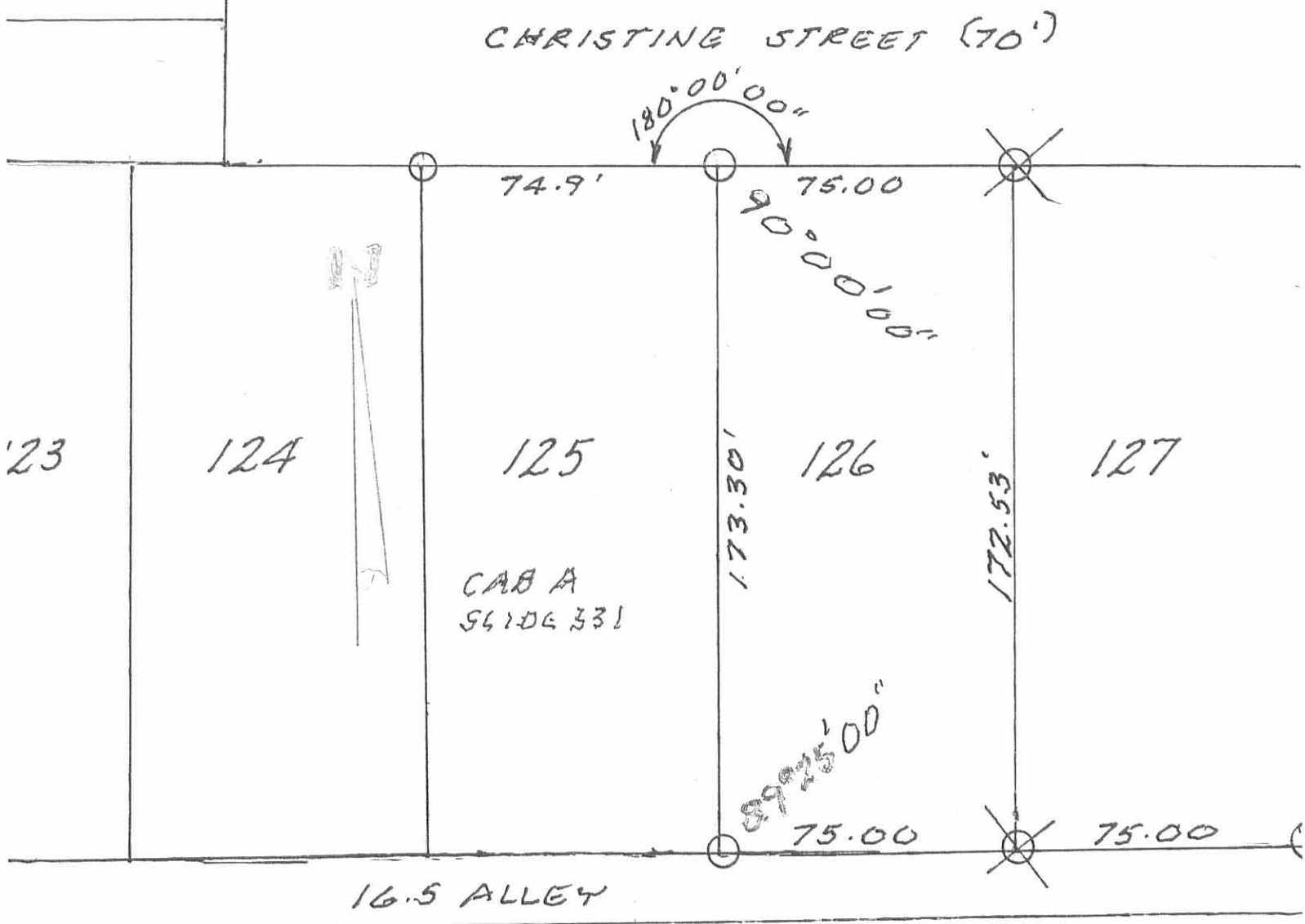


PCD 7-29-08

SMY OR

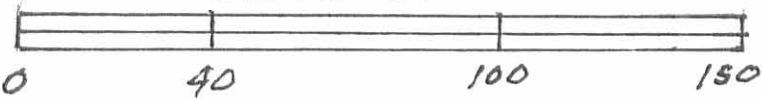


SURVEY OF LOT 126, MYERS ADD.
 VILLAGE OF HUNTSVILLE
 MEARTHUR TOWNSHIP
 LOGAN COUNTY, OHIO
 FOR: LARRY JERVISS
 JULY 24, 2008
 SCALE: 1"=40'



LEGEND:

- = 5/8" IRON BAR FP
- ⊗ = 5/8" IRON BAR SGT



INDEXED ON MAP
 4952 IP

Leslie H. Geeslin
 LESLIE H. GEESLIN
 RUSHLYANIA, OH
 PH 937-468-7265

REC'D 12-24-97 *slw*

MYERS STREET (60')



LEGEND

- 5/8" IRON ROD SET
- 3/4" IRON ROD FOUND

CHRISTINA DRIVE (70')

N 87° 49' 21" E
154.87'

LOT 123

LOT 124

LOT 125

N 02° 48' 41" W
175.05'

173.81'
S 02° 47' 22" E

EUNICE I. WHITE
1.00 ACRE
O.R. 257, PG. 673

EUNICE I. WHITE
1.00 ACRE
O.R. 58, PG. 82

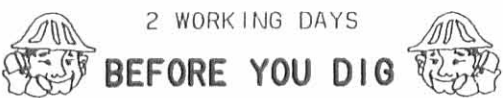
154.80'
S 87° 21' 49" W

16.5' ALLEY

RETRACEMENT SURVEY OF LOTS
 LOT 123 AND LOT 124 OF
 MYERS ADDITION TO HUNTSVILLE
 PLAT CABINET A, SLIDE 331
 VIRGINIA MILITARY SURVEY 9904
 VILLAGE OF HUNTSVILLE
 McARTHUR TOWNSHIP
 LOGAN COUNTY, OHIO

REFERENCES

LOGAN COUNTY ENGINEER'S FILES:
 PLAT OF MYERS ADDITION
 PLAT CAB. A, SLIDE 331
 O.K. SHIRK BOOK 3, PAGES 17 & 61
 R-1864, R-3105, R-4776, R-4952
 R-4952, R-6133 AND R-6461



2 WORKING DAYS

BEFORE YOU DIG

CALL TOLL FREE **800-362-2764**

OHIO UTILITIES PROTECTION SERVICE.

INDEXED ON MAP
 4952 2P



ORIGINAL STAMP IN GREEN

SURVEYED BY:

Jeffrey I. Lee
 JEFFREY I. LEE
 PROFESSIONAL SURVEYOR 6359
 DECEMBER 22, 1997

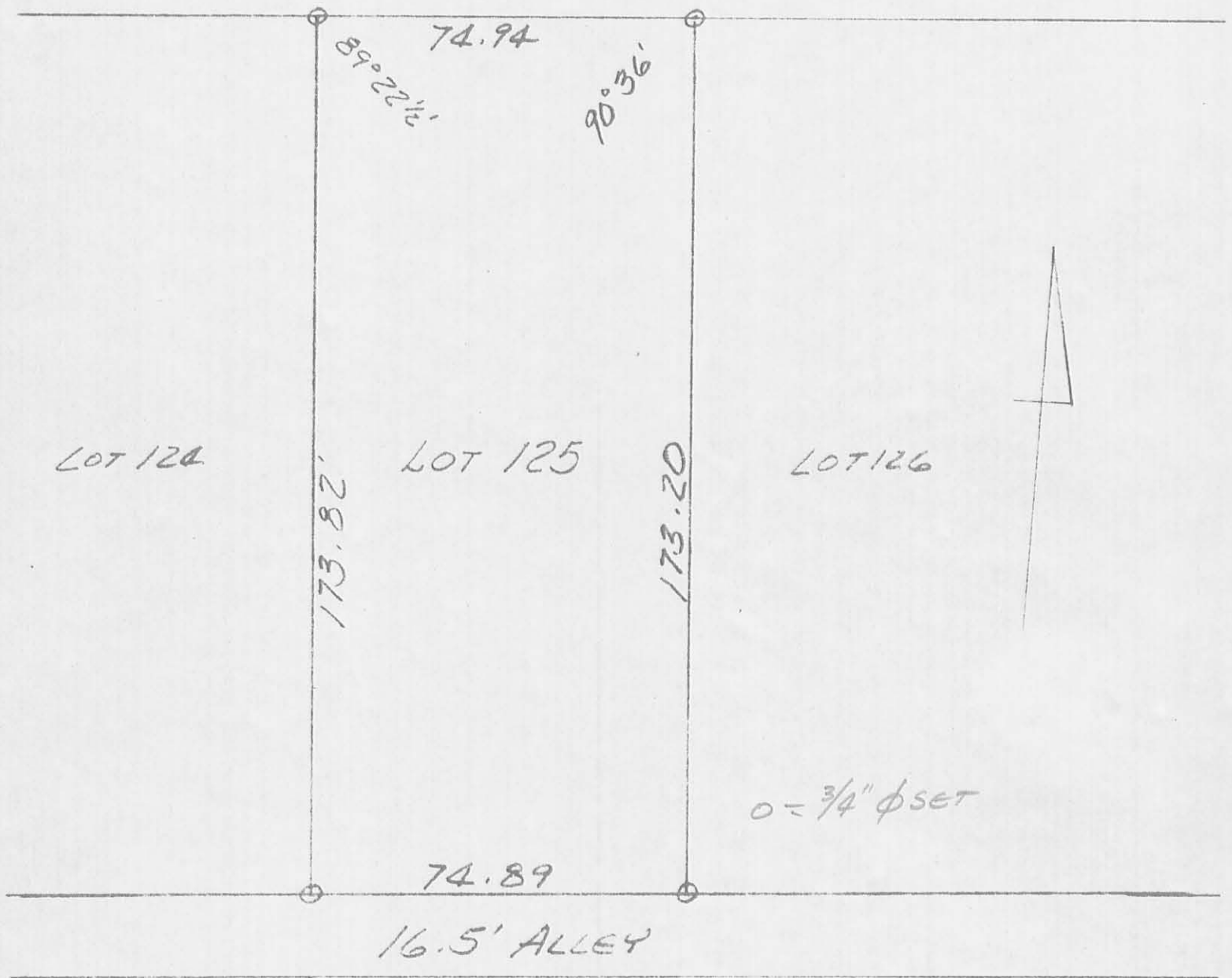
COPYRIGHT 1997 BY:

LEE SURVEYING & MAPPING CO., INC.
 117 North Madriver Street
 BELLEFONTAINE, OHIO 43311
 (937) 593-7335

D 321 EDMARKER

L-2599-3

CHRISTINE DRIVE (70')



SURVEY OF LOT 125
HUNTSVILLE, OHIO
OCTOBER 24, 1971



4952 3P

INDEXED ON MAP
LESLIE H. GEESLIN
REG. SURVEYOR 5248