

REC'D 6-18-07 SML/OK

LESLIE H. GEESLIN

REGISTERED SURVEYOR 5248

P. O. BOX 274

RUSHSVLVANIA, OHIO 43347

TELEPHONE: (513) 468-7265

BLAND SURVEY

June 13, 2007

The following described real estate situated in the State of Ohio, County of Logan, Township of McArthur, being part of V. M. S. 9904 in the Village of Huntsville and more particularly described as follows:

Beginning at a magnetic nail set at the northwest corner of Lot 26 of Hoover's First Add. to Huntsville (Old Lot No. 1) as shown on slide 159 Cabinet A and in the east line of Larry E. Kussmaul's 1.582 acre tract as described in O. R. Vol. 789 Page 766.

Thence with said Kussmaul's east line N. 0° 43' 42" W. 163.00 feet to a point in an open ditch, passing a 5/8 inch iron bar set at 138.00 feet.

Thence with said open ditch S. 46° 26' 36" E. 205.65 feet to a 5/8 inch iron bar set in the west line of a 16.5 foot alley.

Thence with said west line S. 38°30' 21" W. 24.07 feet to a 3/4 inch iron pipe found at the northeast corner of said Lot 26.

Thence with the north line of said Lot 26 S. 88° 56' 26" W. 132.00 feet to the place of beginning.

Containing 0.304 acre more or less.

The above described 0.304 acre tract being on the south side of Charles M. Bland Sr.'s 0.911 acre tract as described in O. R. Vol. 301 Page 266.

Bearings are based on an assumed Bearing (N. 0° 43' 42" W.) in this field survey by Leslie H. Geeslin, Reg. Surveyor No. 5248 on June 13, 2007.

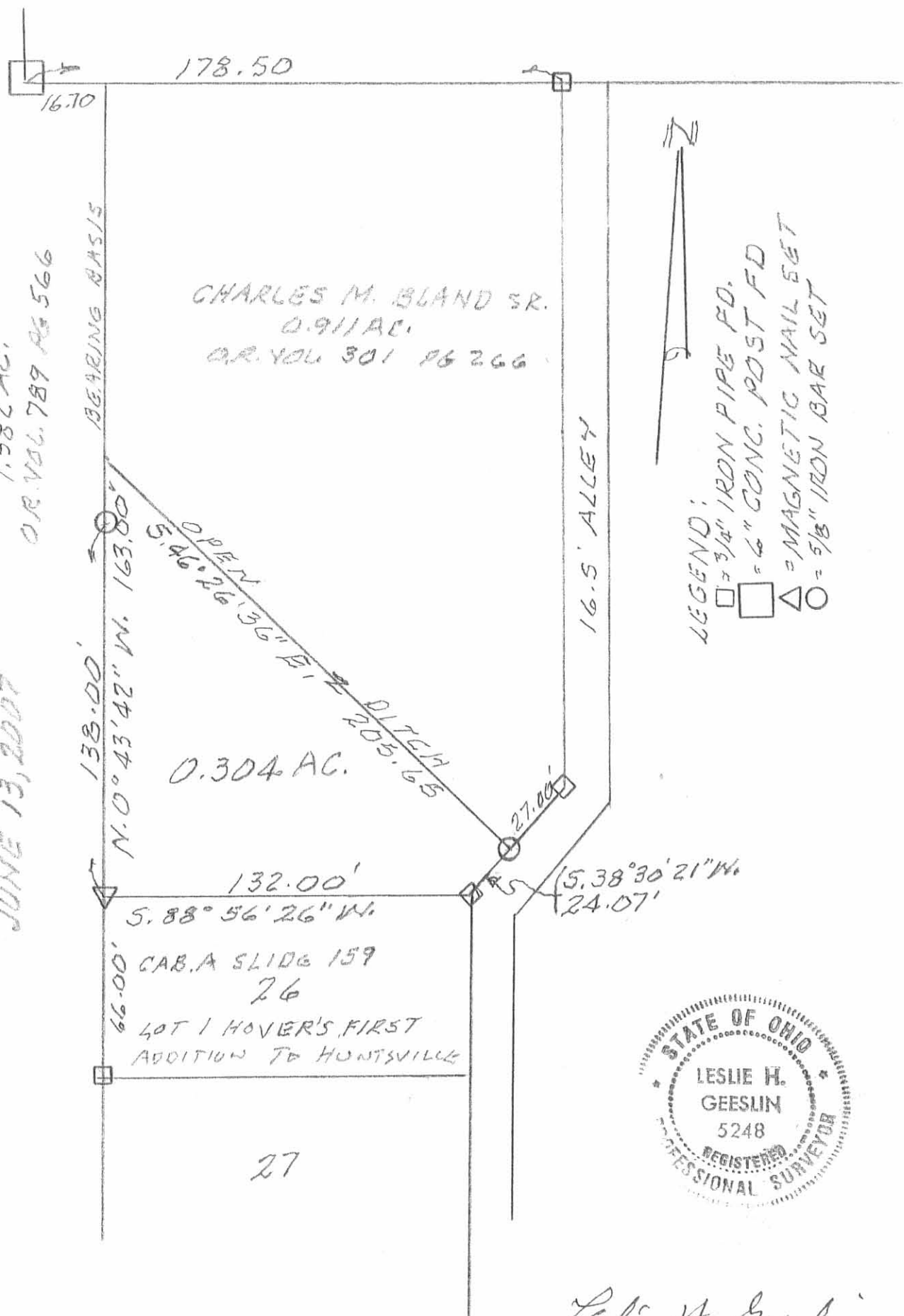
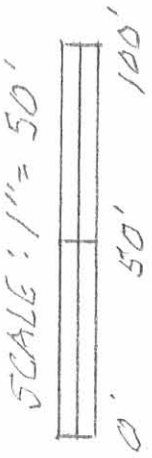


Leslie H. Geeslin

INDEXED ON MAP
6935 1D

SURVEY OF 0.304 AC. TRACT
IN V.M.S. 9904, VILLAGE OF
HUNTSVILLE, MEARTHUR TWP.,
LOGAN COUNTY, OHIO
FOR CHARLES BLAND.
JUNE 13, 2007

LARRY E. KUSSMAUL
1.582 AC.
O.R. VOL. 789 PG 566



CHARLES M. BLAND SR.
0.911 AC.
O.R. VOL 301 PG 266

0.304 AC.

66.00' CAB. A SLIDG 159
26
LOT 1 HOVER'S FIRST
ADDITION TO HUNTSVILLE



Leslie H. Geeslin
LESLIE H. GEESLIN
RUSHSVLVANIA, OH
OH 937-412-7269

INDEXED ON MAP
6935 1P

- LEGEND:
- = 3/4" IRON PIPE PD.
 - = 6" CONC. POST FD
 - △ = MAGNETIC NAIL SET
 - = 5/8" IRON BAR SET

HAZEL SMITH
17.62 AC.

ROY WILLOBY
0.97 AC.

CLAUDE M. JENKINS
0.19 AC.

RALPH E. HUGHES
0.59 AC.

6935 2P

INDEXED ON MAP

HAROLD J. ELLIOTT
0.20 AC.

FLOYD E. LEFEVER
0.23 AC.

MARCH, 1972
SURVEY OF ALLEY
FOR THE VILLAGE OF
HUNTSVILLE, OHIO
V.M.S. 9904
MC ARTHUR TOWNSHIP

○ = 3/4" PIPE FD. ● = IRON BAR FD.
SCALE 1" = 50'

CHESTER R. KUOTE, P.E.
LOGAN COUNTY ENGINEER

