

R. W. Chalfaut et al. Survey. Feb. 21st 1913

R. P. STUDLEY & Co., Manufacturing

STATION. ALIGNMENT. DEFLECTION. REMARKS.

1) Start at c. - S.W. cor. Humphreys 70.80 a. Stone in line fence & fence with wire fence N 73 1/4 W by middle. W. line Humphreys at 533. center road 20.00 road 2693. Wooden corner post 10' di. N 99° corner Humphreys 70.80 a

2) Start at corner post N 99° & Humphreys fence with wire fence N. line Humphreys N 75 1/4 E at 1146.8 N 82° Humphreys at wooden corner post split post of N. S. E. & Cora Mathews in W. line of W. a. Wallace

3) Start at (2) N. E. & Humphreys fence with wire fence of W. line Humphreys W. line Wallace S 4 1/2 E. (Rail fence on line Humphreys south of road) at 1339; center county road, on W. line Wallace W. line between fences on N 7 1/2 E side of road 2690. wire fence N. line

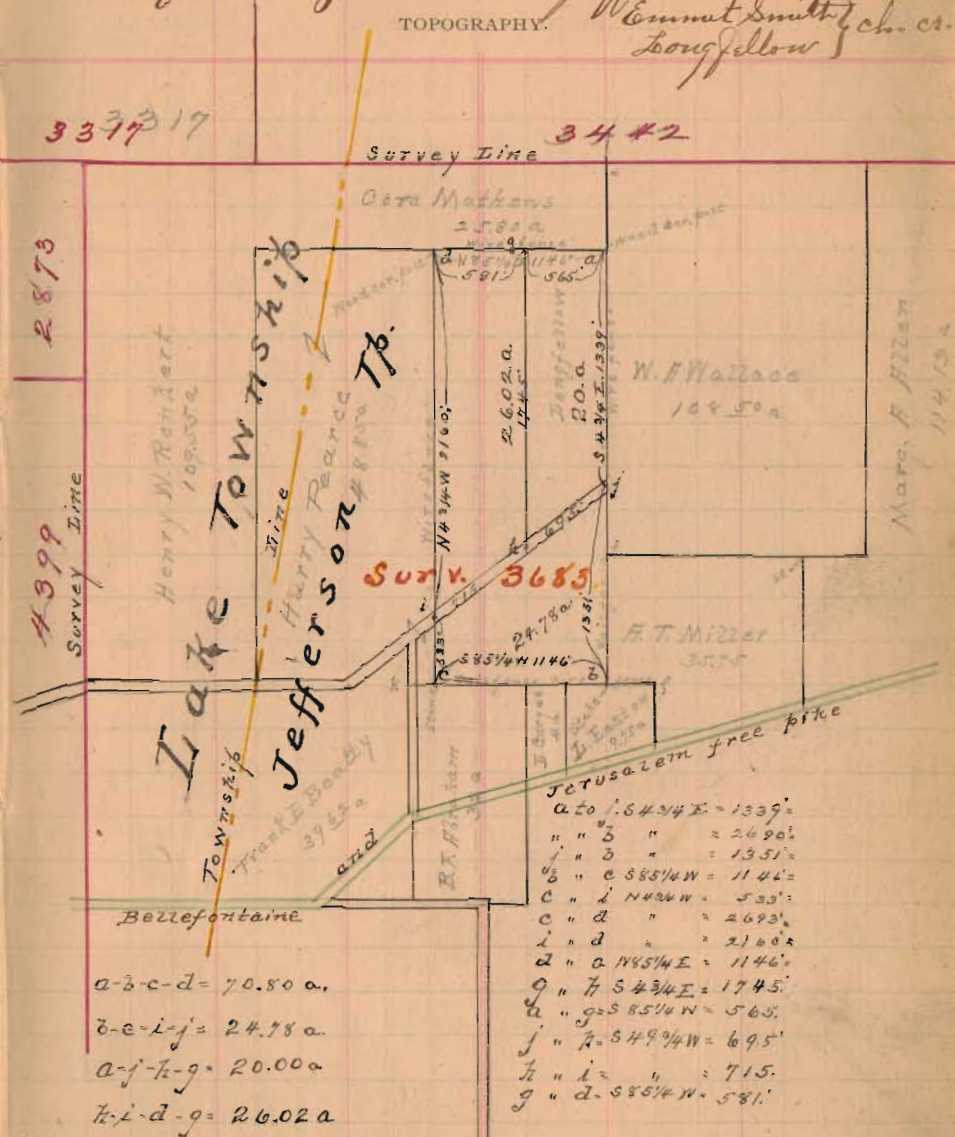
4) Start at c. - S.W. cor. Humphreys with his cabin N 85 1/4 E at 1146 ft at corner at main wire fence of N. line center of line cut rail fence

5) Start at stone in east corner of Humphreys fence with road S 49 3/4 W at 1470. stone cut road and W. line Humphreys

Land a. b. c. d. Humphreys tract of 70.80 a. so called.

Part of Survey N^o 3683. Jefferson Twp.

Emmet Smith ch. cr. Longfellow



a-b-c-d = 70.80 a.
 b-c-i-j = 24.78 a.
 a-f-h-g = 20.00 a.
 h-i-d-g = 26.02 a

Jerusalem free pike
 a to b = 64.94 E = 1339'
 " " b " = 2690'
 " " c " = 1351'
 " " c 585 1/4 W = 1146'
 " " d N 49 1/4 W = 533'
 " " d " = 2693'
 " " e N 85 1/4 E = 1146'
 " " f S 49 3/4 E = 1745'
 " " g S 85 1/4 W = 581'
 " " h S 49 3/4 W = 695'
 " " i " = 715'
 " " j S 85 1/4 W = 581'

1 - Stone boulder 12' x 10' x 12" Mar 12 - 1913
 2 - stone slab 16' 5" x 12" = 20.7' " "
 3 - Stone boulder 10' x 10' x 7" Mar " "

3 INDEXED ON MAP