

Surveyed for JT Rodgers

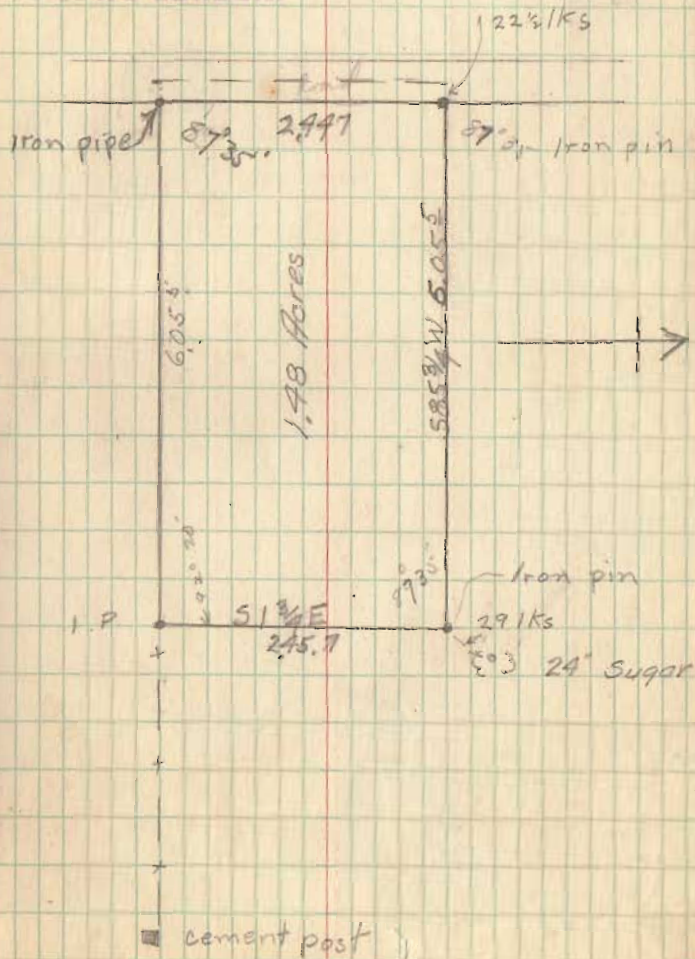
Survey 3438 Jefferson Tp Nov 18th 1915

(57)

W F Montgomery

JT Rodgers.

INDEXED ON MAP

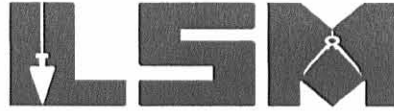


Re 6-23-06 SML/RL

Lee Surveying and Mapping Co., Inc.

Land Surveys • Topography • Subdivisions • Construction Layout

117 N. Madriver St.
Bellefontaine OH 43311



Phone: (937) 593-7335
Fax: (937) 593-7444

1975-2005 - 30 YEARS OF EXCELLENCE

COUNTRYWIDE HOME LOANS

1.483 ACRES

Lying in Virginia Military Survey 3438, Jefferson Township, Logan County, Ohio.

Being all of the Countrywide Home Loans 1.48 acre tract as deeded and described in Official Record 814, Pg. 259 of the Logan County Records of Deeds and being more particularly described as follows:

Commencing at a railroad spike found on the center-line of Township Road 135 at angle point station 12+00 (Logan County Engineer's Field Book 511, Page 62).

THENCE, with the center-line of Township Road 135 (60 feet wide), N 1°-50'-00"E, a distance of 538.31 feet to a railroad spike set at the TRUE POINT OF BEGINNING.

THENCE, with the center-line of Township Road 135, N 1°-50'-00"E, a distance of 161.70 feet to a railroad spike found.

THENCE, with the lines of the William Ray Wilt, Jr. , original 191.970 acre tract (O.R. 625, Pg. 26, Tract I), the following two courses:

N 89°-19'-06"E, a distance of 399.82 feet to a 5/8 inch iron rod found, passing a 5/8 inch iron rod set at 30.03 feet.

S 1°-50'-00"W, a distance of 161.70 feet to a 8 inch wood corner post found, referenced by a 5/8 inch iron rod found N 89°-19'-06"E, a distance of 1.10 feet.

THENCE, with the north line of the Ronald S. Smith original 194.14 acre tract (O.R. 208, Pg. 619), S 89°-19'-06"W, a distance of 399.82 feet to the point of beginning, passing a 5/8 inch iron rod set at 369.79 feet.

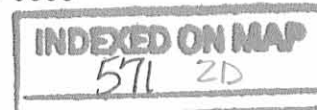
Containing 1.483 acres, of which 0.111 acre is within the highway right-of-way.

The basis for bearings is the center-line of Township Road 135 at station 12+00, being N 1°-50'-00"E and all other bearings are from angles and distances measured in a field survey by Lee Surveying and Mapping Co., Inc. on June 22, 2006.

Description prepared by:



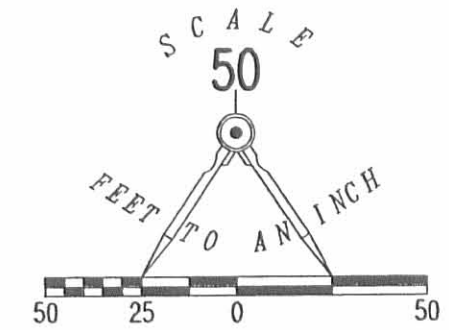
Jeffrey I. Lee
Jeffrey I. Lee
Professional Surveyor 6359
June 22, 2006



4259066

REV'D 6-23-06 SMY OK

WILLIAM RAY WILT, JR.
ORIGINAL 191.970 ACRES
O.R. 625, PG. 26
TRACT I



LEGEND:

- ⊗ RAILROAD SPIKE FOUND
- ⊕ RAILROAD SPIKE SET
- 5/8 INCH IRON ROD FOUND
- 5/8 INCH IRON ROD SET
- ⊠ 8 INCH WOOD CORNER POST FOUND

TOWNSHIP ROAD 135 (60')

1.483 ACRES
OF WHICH 0.111 ACRE IS WITHIN
THE HIGHWAY RIGHT-OF-WAY

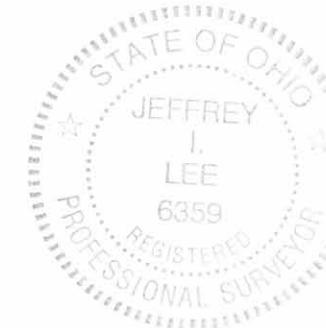
COUNTRYWIDE HOME LOANS
1.48 ACRES
O.R. 814, PG. 259

RONALD S. SMITH
ORIGINAL 194.14 ACRES
O.R. 208, PG. 619

RETRACEMENT SURVEY OF THE
COUNTRYWIDE HOME LOANS
1.48 ACRE TRACT
OFFICIAL RECORD 814, PAGE 259
VIRGINIA MILITARY SURVEY 3438
JEFFERSON TOWNSHIP
LOGAN COUNTY, OHIO

SURVEYED BY:

Jeffrey I. Lee
JEFFREY I. LEE
PROFESSIONAL SURVEYOR 6359
JUNE 22, 2006



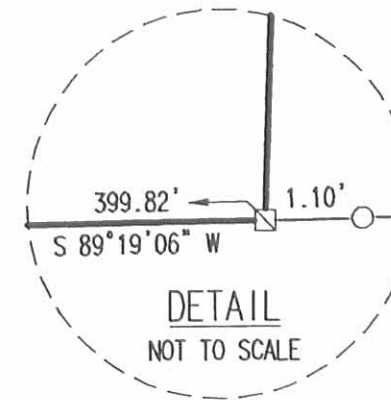
ORIGINAL STAMP IN GREEN

COPYRIGHT 2006 BY:
LEE SURVEYING & MAPPING CO., INC.
117 North Madriver Street
BELLEFONTAINE, OHIO 43311
(937) 593-7335

KSR D0606 4259066 L-4259-3

2 WORKING DAYS
BEFORE YOU DIG
CALL TOLL FREE **800-362-2764**
OHIO UTILITIES PROTECTION SERVICE

ANGLE POINT STA. 12+00
LOGAN COUNTY ENGINEER'S
FIELD BOOK 511, PAGE 62



DETAIL
NOT TO SCALE

INDEXED ON MAP

511 2P