

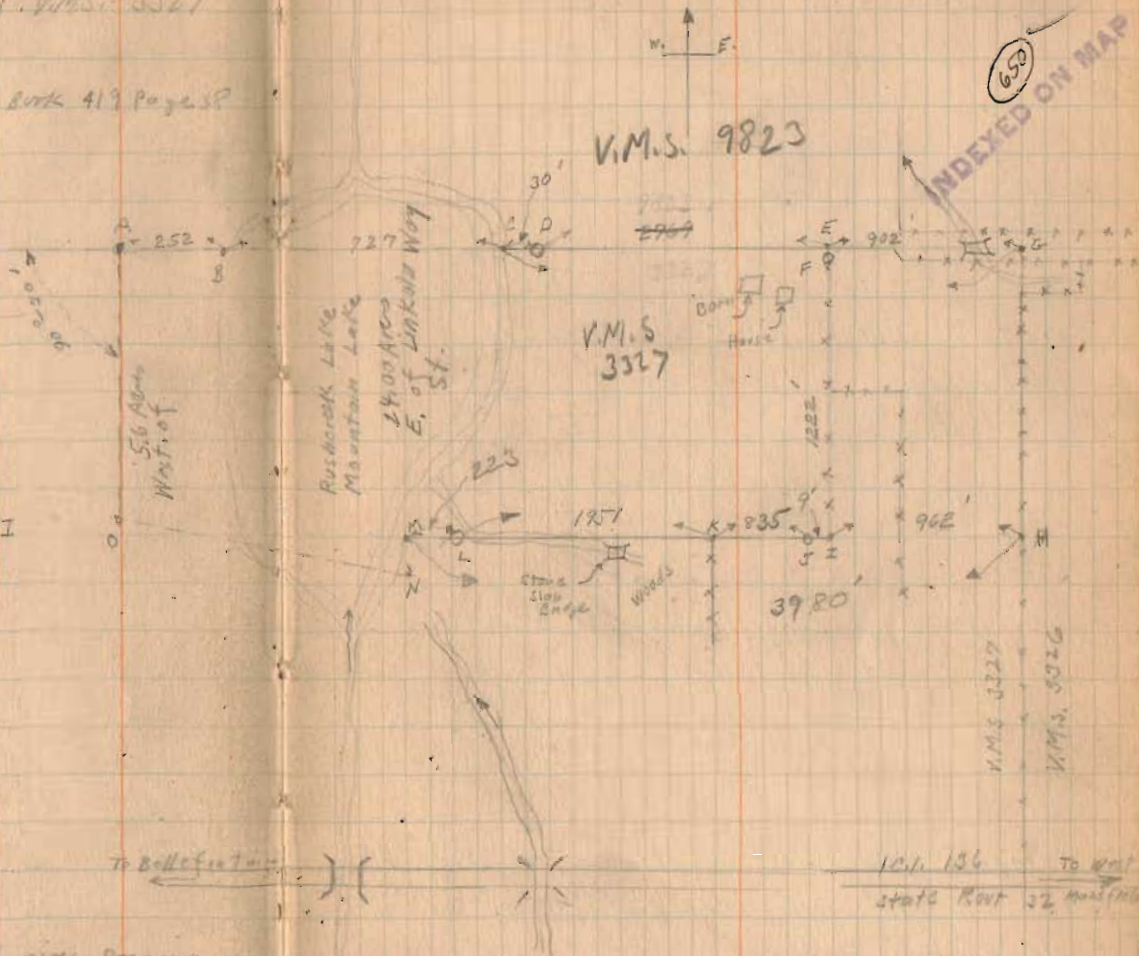
Mountain Lake Survey V.M.S. 3327

- A - Stake N.E. Corner Kitchen Land Sec 8" Book 419 Page 38
 - B. Edge of water (Ice 1-30-28)
 - C " " " (" 1-30-28)
 - D. 12" soft Maple Looks O.K. for Live.
 - E Fence corner
 - F Double Orange 1' South of Fence DE.
 - G. N.E. Corner of V.M.S. 3327
- DE, Produced To G.H. Fence Line
- H. Fence K.J. Produced.
 - I Fence corner
 - J. 15" Hockberry on Line 9' west of I
 - K Fence corner
 - L 12" soft Maple
 - M Edge of water (Ice 1-30-28)
 - N stake Sec "D" Book 419 Page 38.

M.H. About 45'

Note Survey Book A Page 305 gives Drawing showing CG. 30195' by H.M. 2980.0' by H.G. 1188'

Note Distance from A To D was measured on the ice, 1-30-28.



Jan 30, 1928
cloudy - cold
Wright
Mr Spain.

V.M.S. 9823

V.M.S. 3327

650

INDEXED ON MAP

3201
30195
29800

681.5
41.3 poles.

3280
3200

80