

Checked N. 1406.0' for Present Grade
called dist. 1402.5'

1292
INDEXED ON MAP

No stones found Road # 219
used Present &

Cold 10 above
26

Columbia J. Dowell
x — x — 35+25

Frank Dowell

← 20 * 20 →

Gideon Austin

32+60 — x — x

Wm H. Lyons

Wm H. Lyons
21+44 — x — x
G.H.S. Mitchell

x — x — 13+75

Strained S. from
stone at N.E. Cor. of
P. Dowell 670' fall.

in & of Present Grade ← 20 * 20 →

Frank Dowell

x — x — 6+72

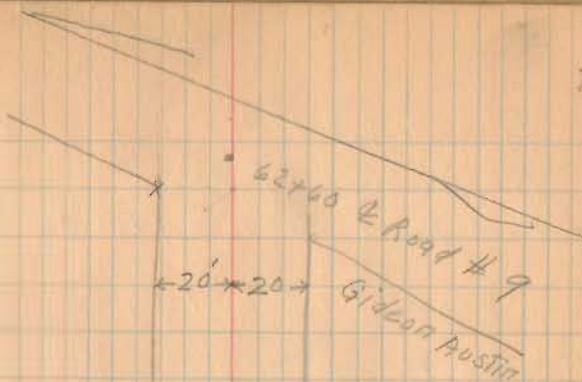
Marcellus Dowell

7+69
1786

Sta. 226

Sta. 0

G.H.S. Mitchell
Route # 53



B. Clyde Meredith
 x x 45+30
 Columbia J. Dowell

42+16 drive

41+00

0° 20'

Sta. 37+00 Angle
 Deflect 0° 20' left

35+50



1292
 INDEXED ON MAP