

BELL SURVEY JEFFERSON TWP.

LINE	DIST.	Needle Bearing	Calculated Bearing
A	2471.1	S 3° - 30' E	S 3° - 37' E
B	2426.6'		S 79° - 36' W
C	1759.5'		N 11° - 16' W
D	2068.2	N 85° - 0' E.	N 85° - 03' E
E	1002.8	N. 4° - 0' W.	N 3° - 50' W
A	584.2	S 85° 1/2 E	S 85° - 15' E

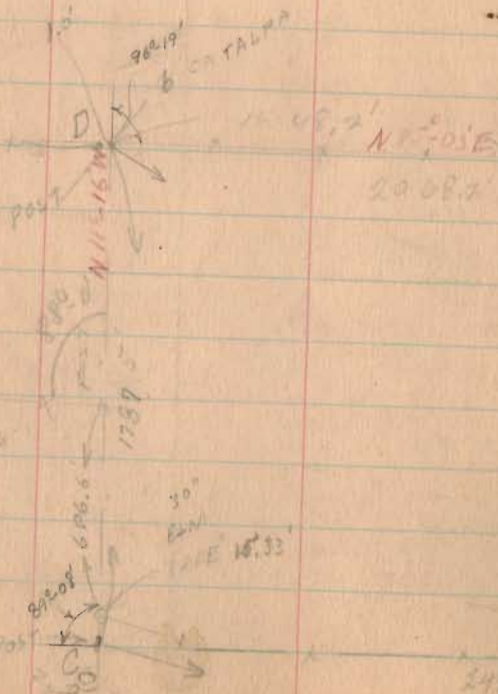
VM.S. 3438 & 3139

JAN. 20 1954
E.K. COPE
J. WEBSTER
WORM.

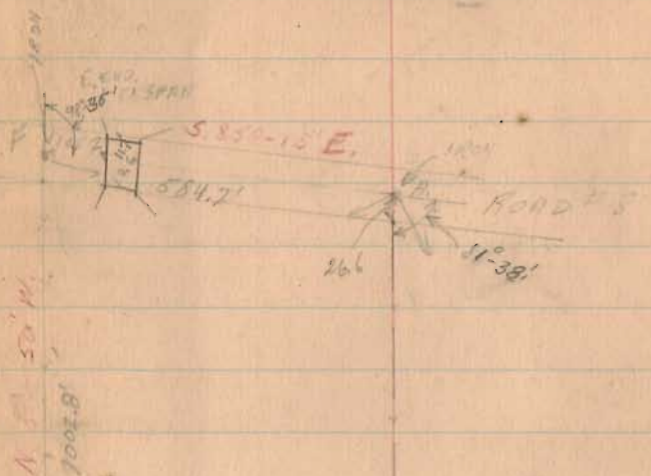
Ω

Observed Ext. Angle	DIST. TRUMPET ON RANDOM		
82° - 02' R.			
83° - 17' R.	14.2 R.	83° - 17' R	83° - 13' R
89° - 10' R.	250' off track	89° - 13' R.	89° - 08' R
96° - 07' R	32.7 L.	96° - 24' R	96° - 19' R.
89 - 05 L	10' R.	88° - 48' L	88° - 53' L
98° - 40' R		98 - 20 - R	98° - 35' R
82° - 02' R.		81 - 42 - R	81° - 38' R

Bell Survey
 Jefferson Twp.
 V.M.S. - 3438 & 3139



2426.6



S 20° 37' E
2471'

1538

INDEXED ON MAP

S 19° 36' W

