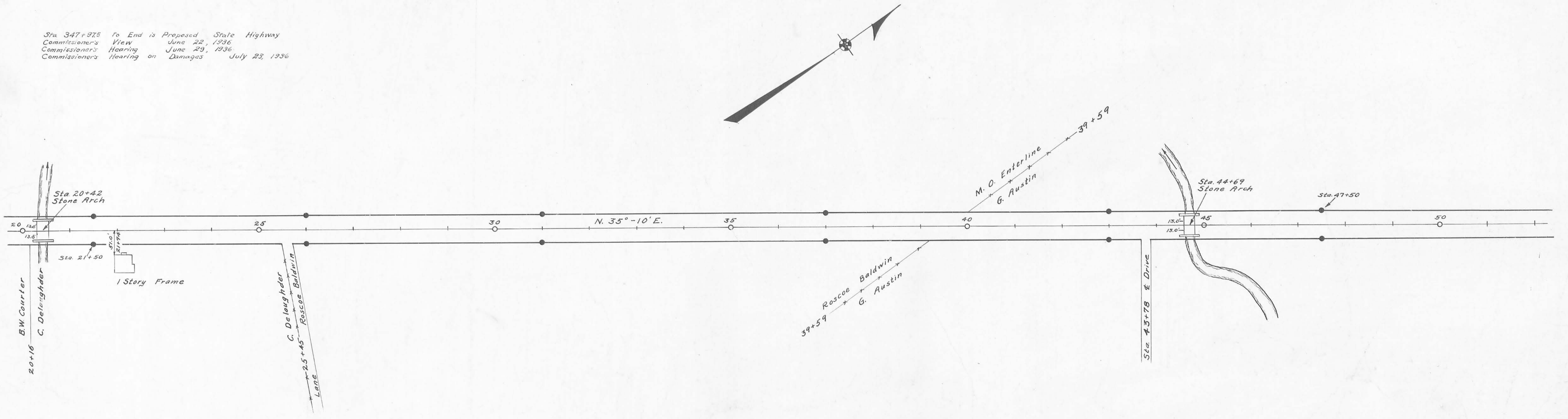


P.I. Sta. 41+63.4  
Δ = 21°-14'  
D = 12'  
T = 89.66'  
E = 8.38'  
See Plan L-22  
Logan County Engineer's Office

See Plan L-22  
Logan County Engineer's Office

Bellefontaine - Rushsylvania Pike 1873 60' wide  
See Free Turnpike Record Vol. 3 Page 238  
See Map Book H Page 56  
Rushsylvania - Big Springs Pike 1874 60' wide  
See Free Turnpike Record Vol. 3 Page 348  
See Map Book H Page 58  
Concrete right-of-way monuments set as shown  
Field Notes Book 578, Logan County Engineer's Office

Sta. 347+975 To End is Proposed State Highway  
Commissioner's View June 22, 1936  
Commissioner's Hearing June 29, 1936  
Commissioner's Hearing on Damages July 23, 1936

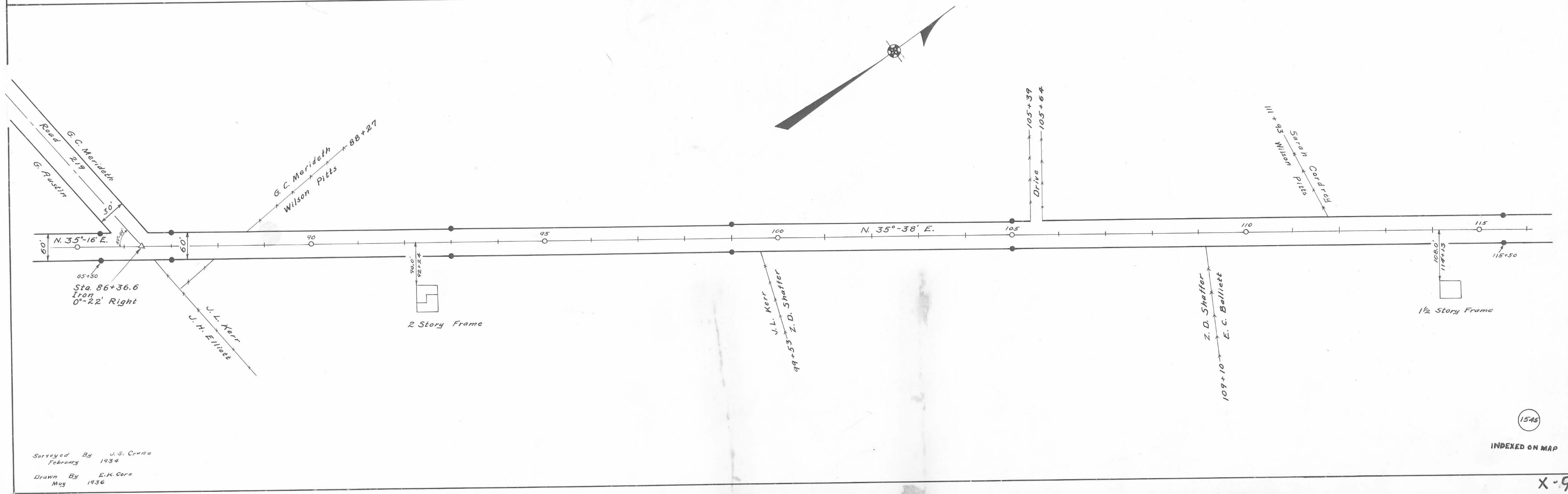
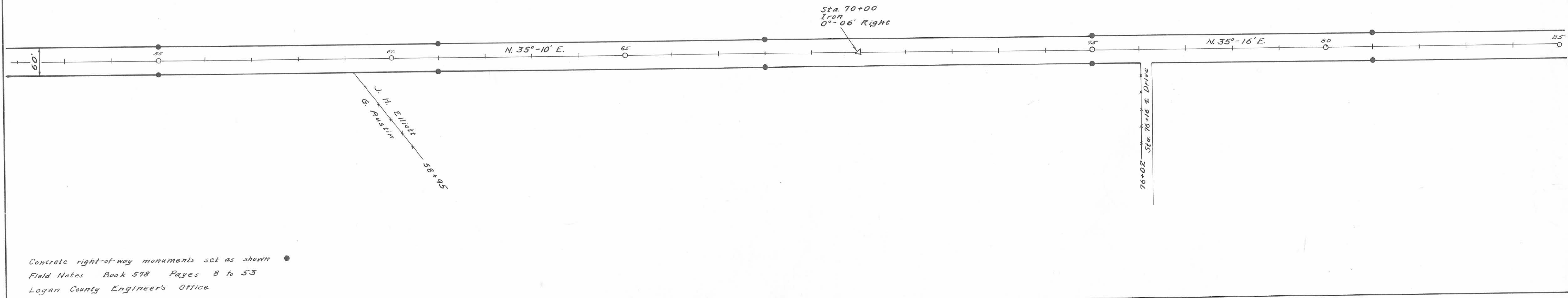


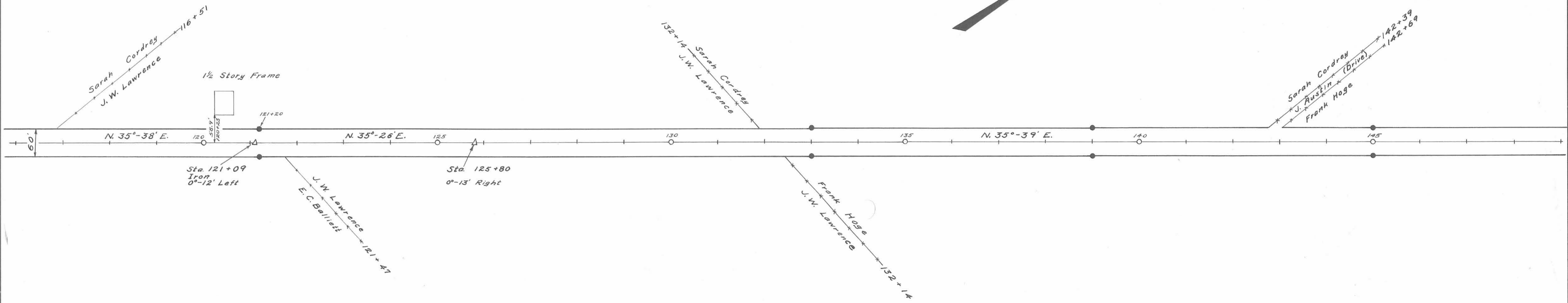
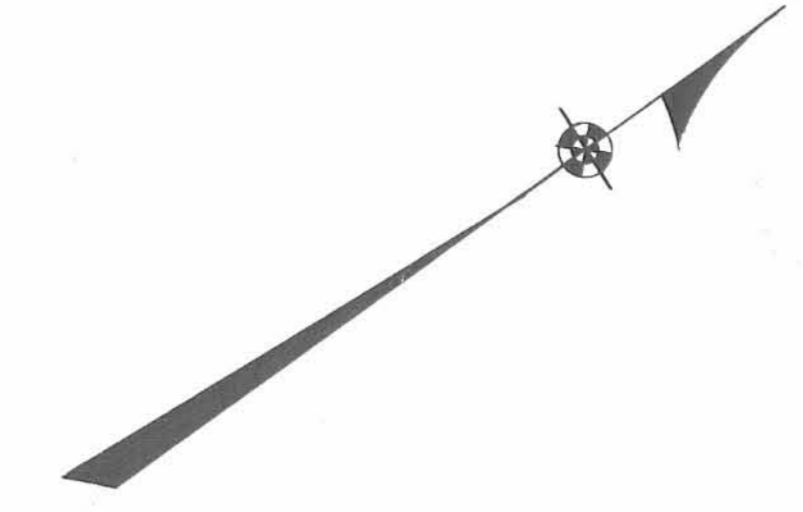
Surveyed By J.S. Crane  
February 1934  
Drawn By E.K. Corb  
May 1936

ROAD 9

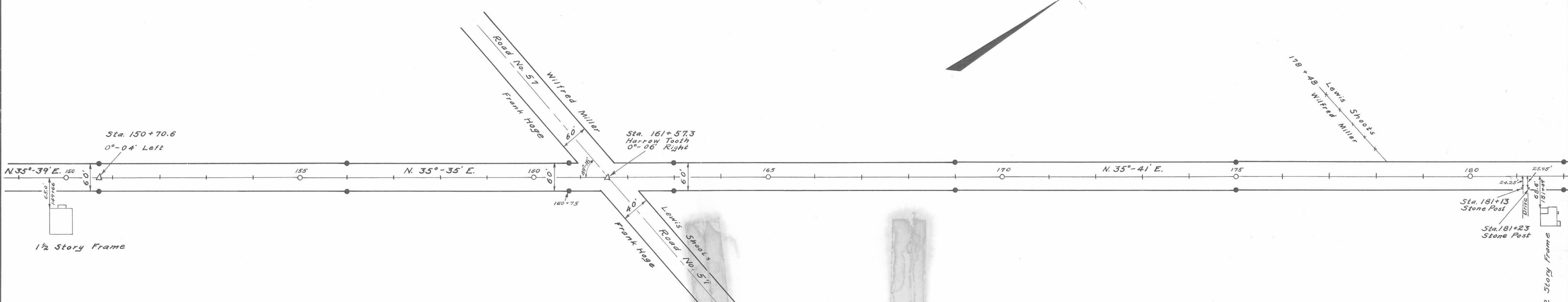
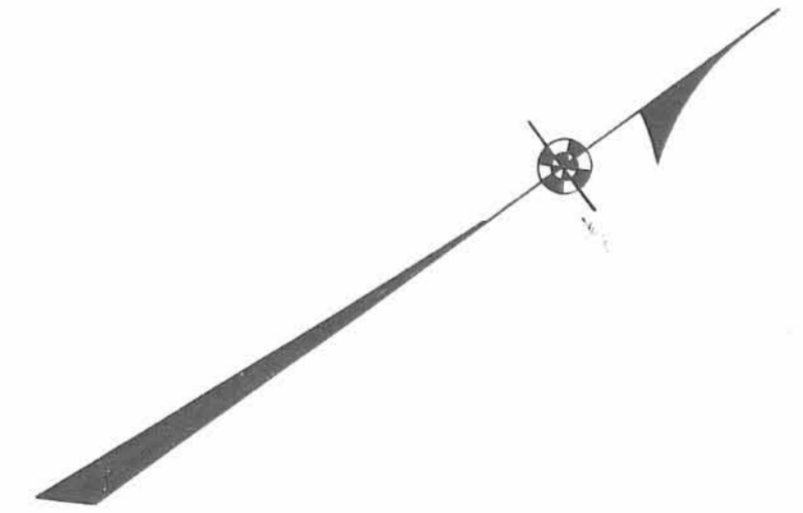
X-9

X-9



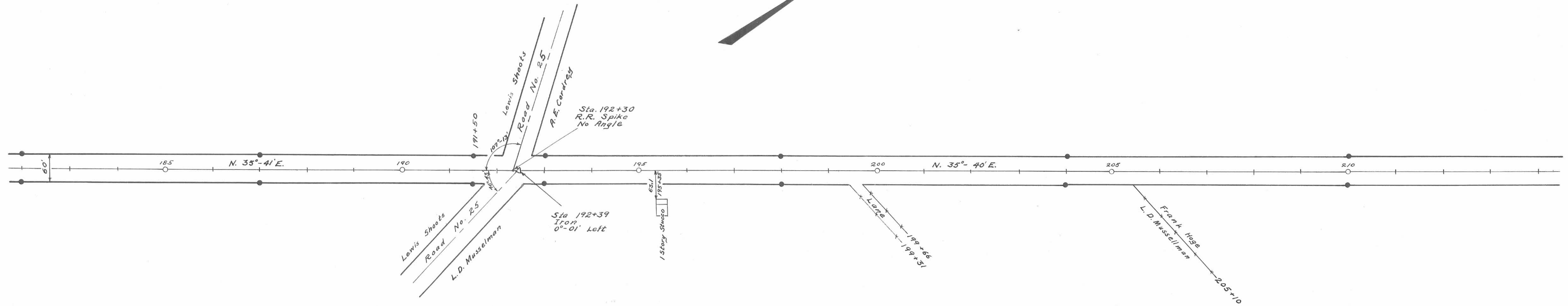


Concrete right-of-way monuments set as shown ●  
Field Notes Book 578 Pages 8 to 53  
Logan County Engineers Office

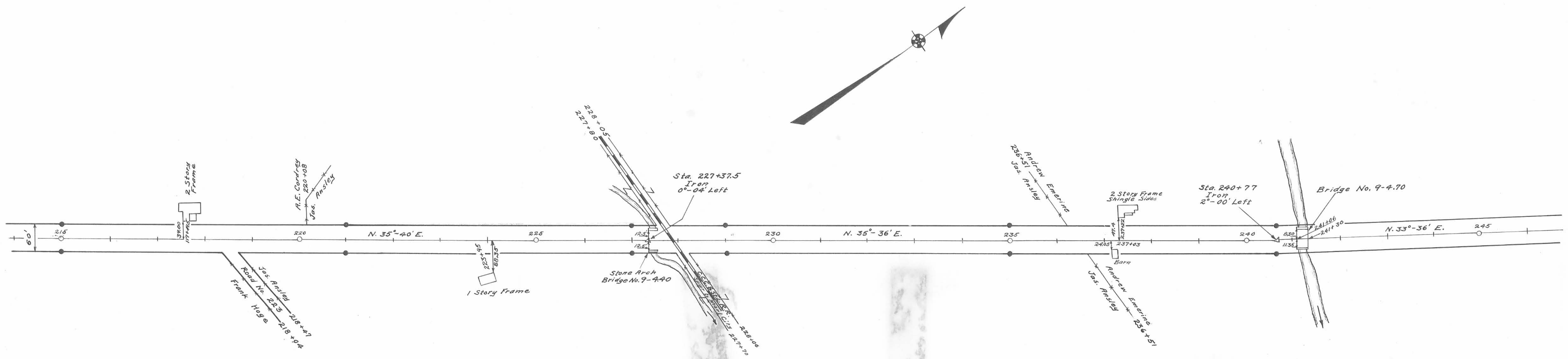


Surveyed By J.S. Crane  
March 1934  
Drawn By E.K. Core  
May 1936

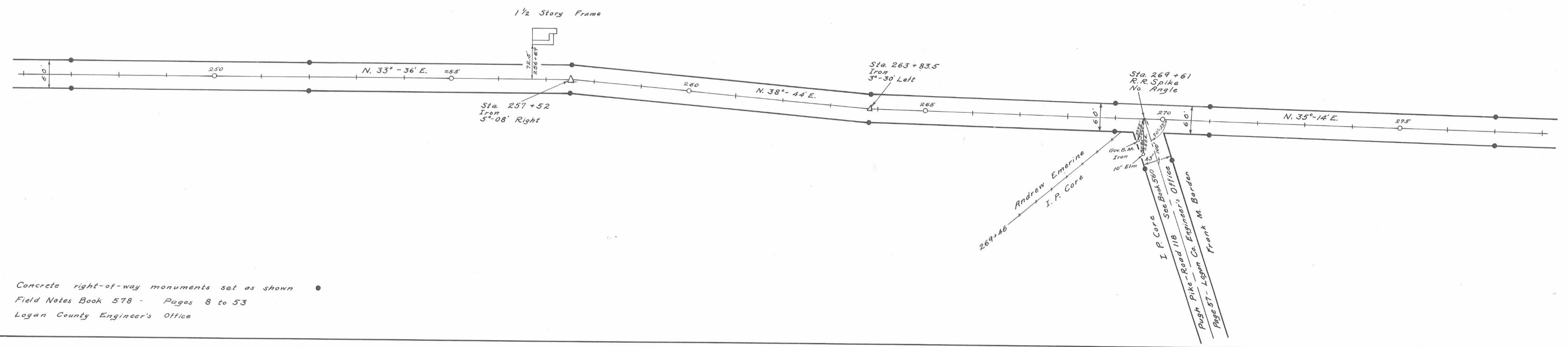
INDEXED ON MAP



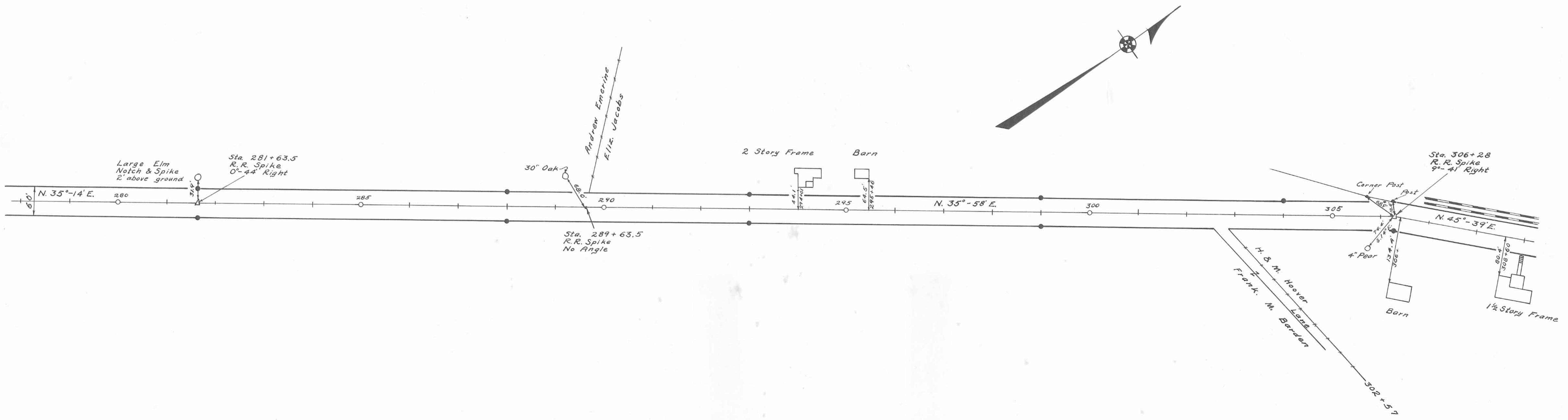
Concrete right-of-way monuments set as shown ©  
Field Notes Book 578 Pages 8 to 53  
Logan County Engineers Office



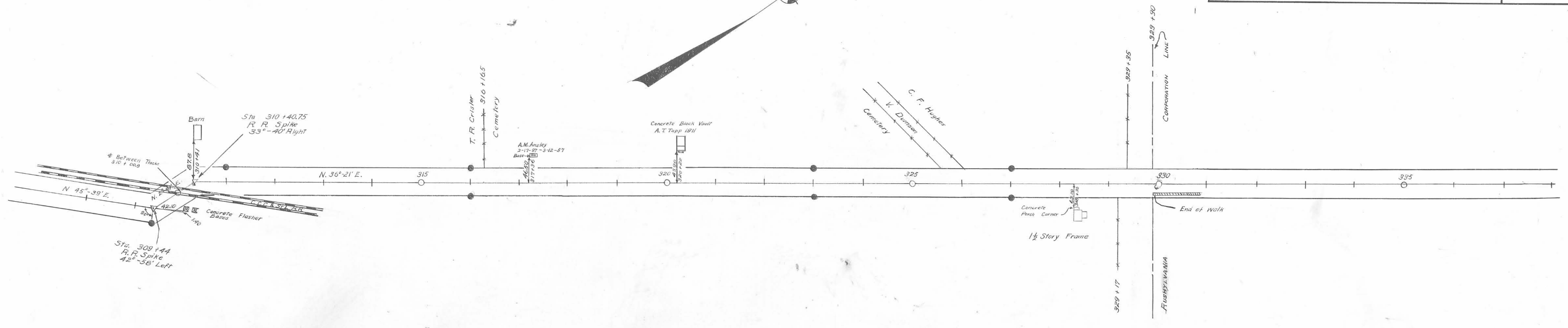
Surveyed By U. S. Crane & F. F. Wright  
March 1934  
Drawn By F. F. Wright & E. K. Core  
May 1936



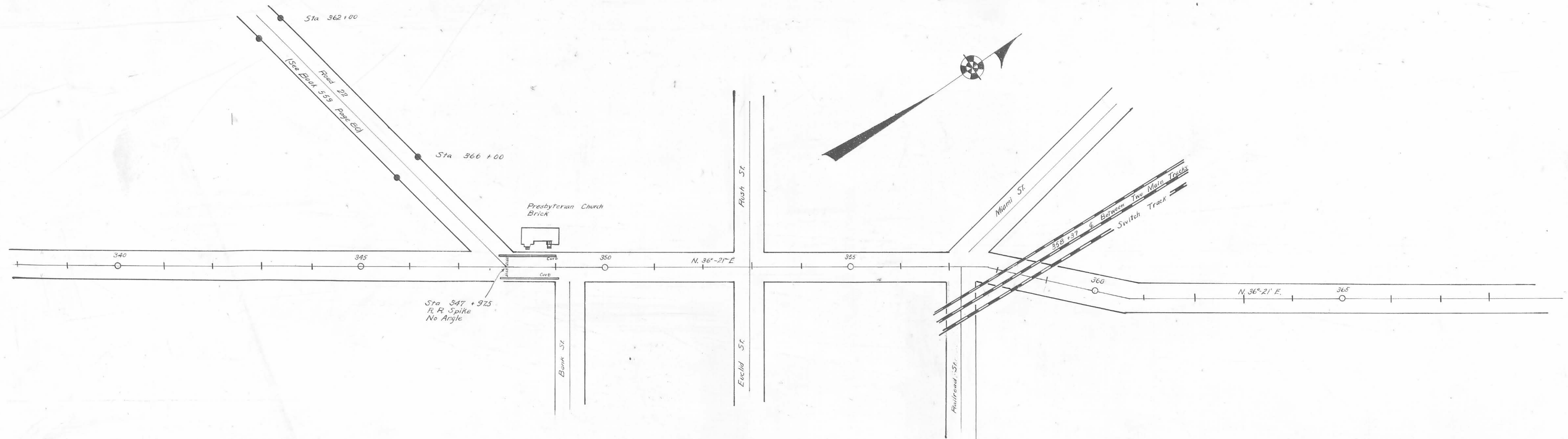
Concrete right-of-way monuments set as shown  
 Field Notes Book 578 - Pages 8 to 53  
 Logan County Engineer's Office



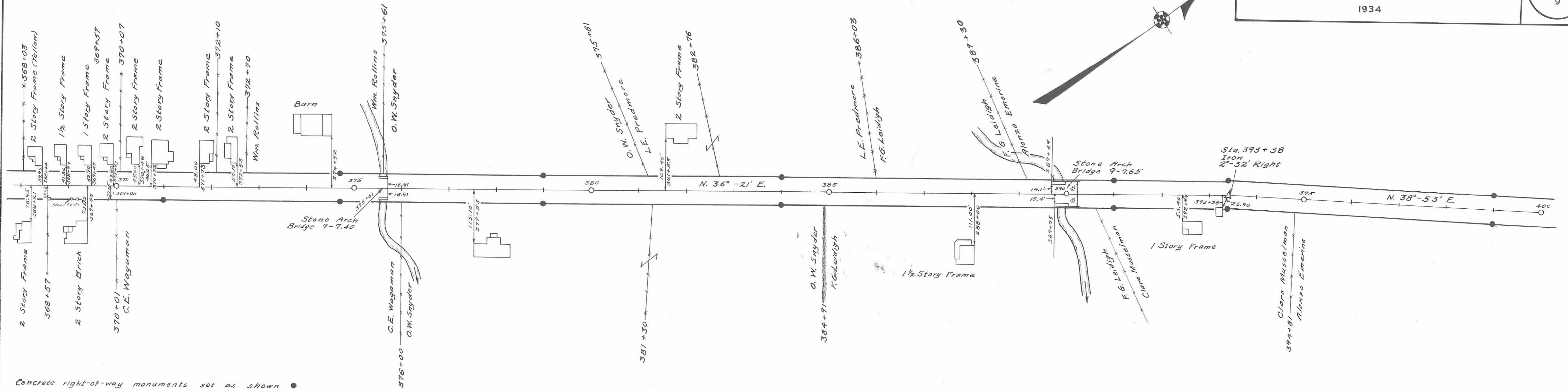
Surveyed By F. F. Wright  
 March 1934  
 Drawn By E. K. Core  
 May 1936



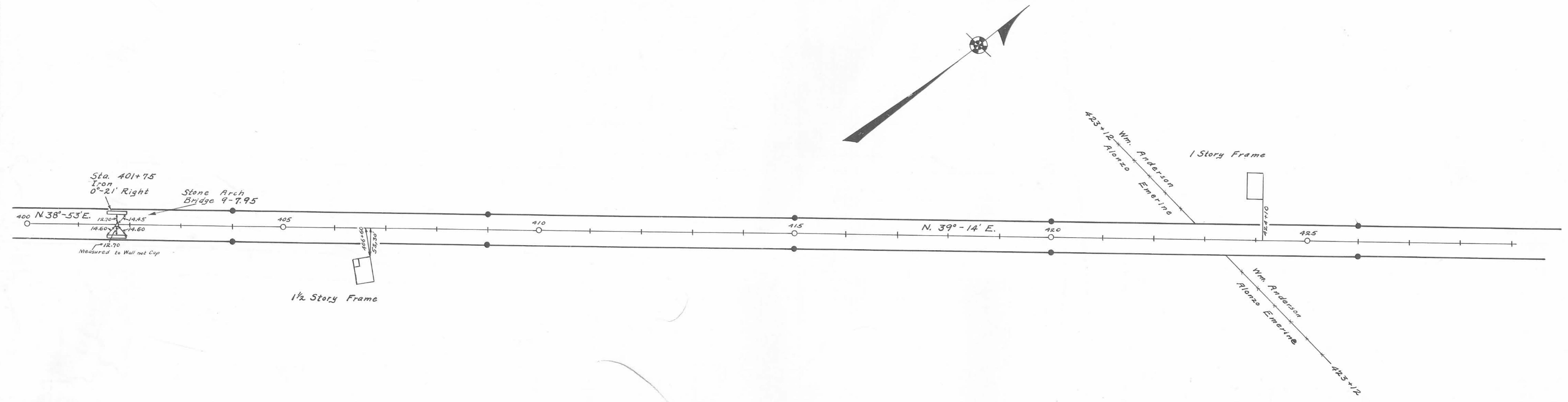
Concrete Right of Way Markments Set as Shown  
Field Notes Book 578 Pages 8 to 53  
Logan County Engineer's Office



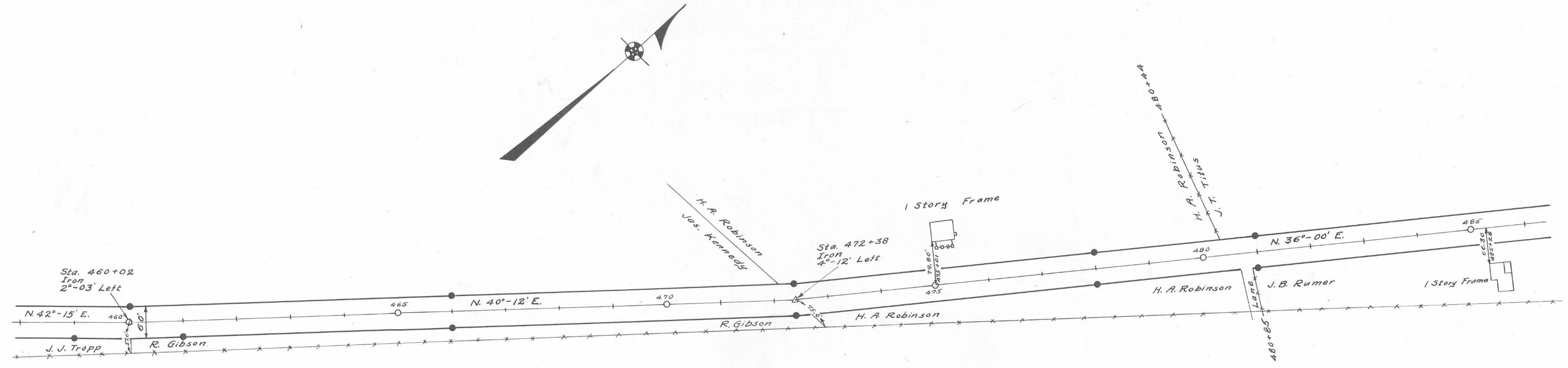
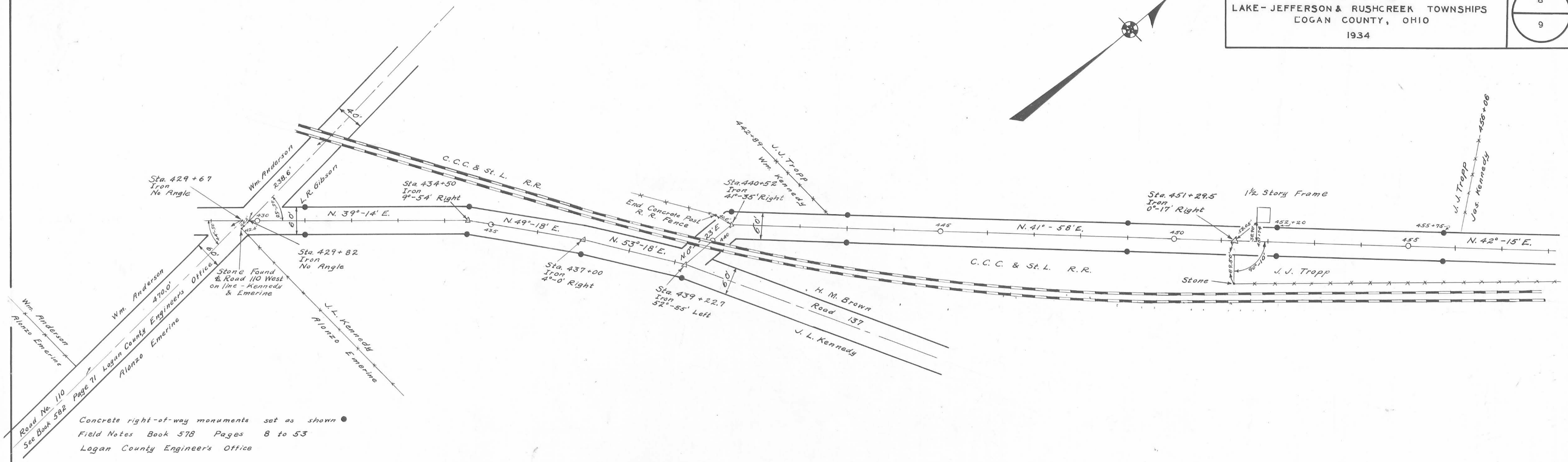
Surveyed By R. F. Wright  
March 1934  
Drawn By E. K. Cere  
June 1936



Concrete right-of-way monuments set as shown ●  
Field Notes Book 578 Pages 8 to 53  
Logan County Engineers Office

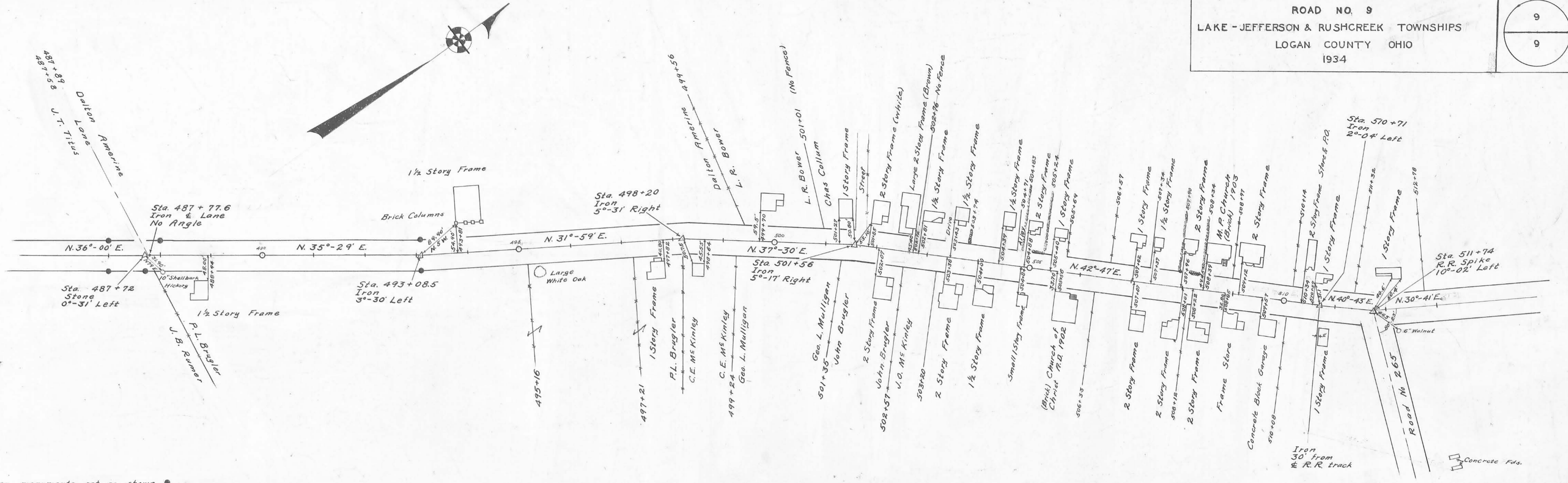


Surveyed By F. F. Wright  
March 1934  
Drawn By E. K. Carr  
May 1936



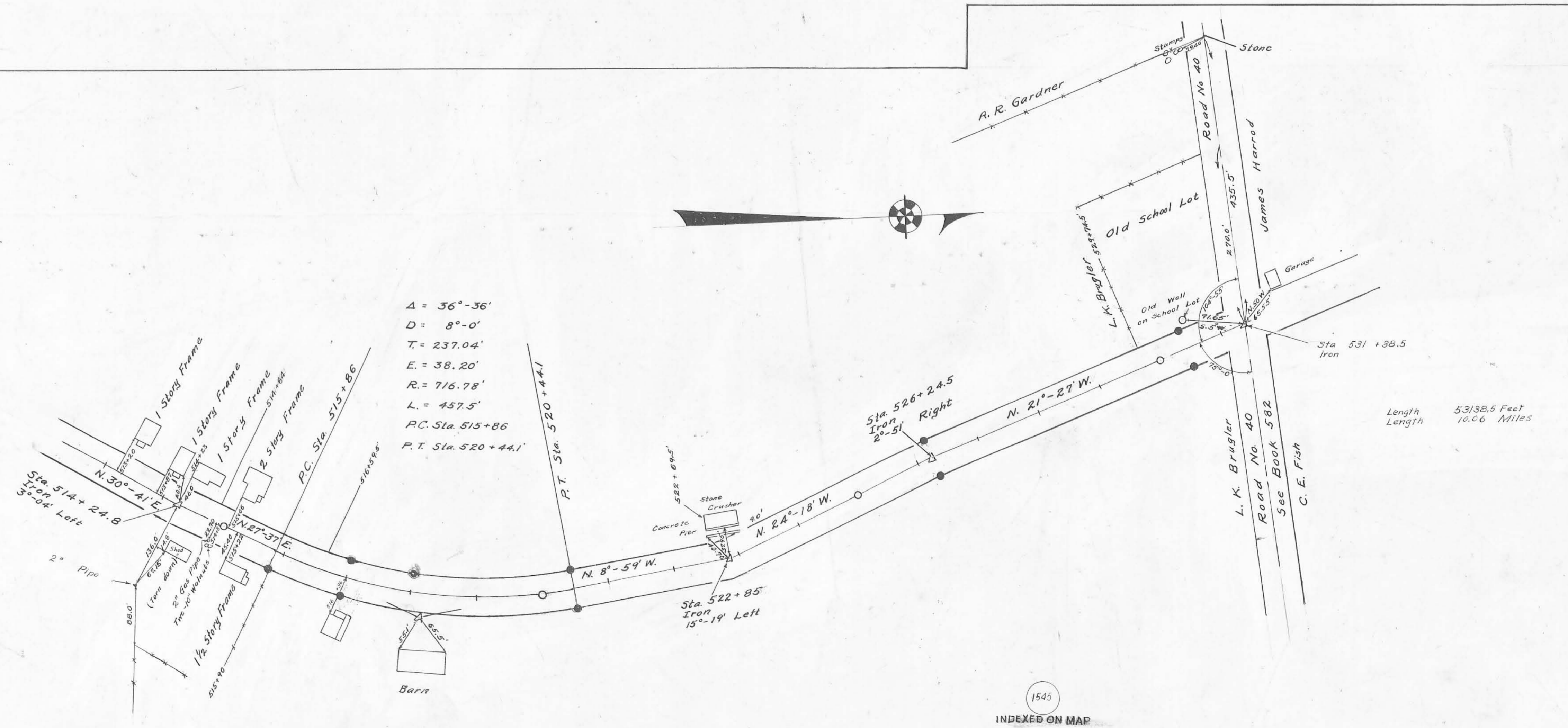
Surveyed By F.F. Wright  
March 1934  
Drawn By E.K. Core  
May 1936





Concrete right-of-way monuments set as shown •  
Field Notes Book 578 Pages 8 to 53  
Logan County Engineers Office

ROAD 9



Surveyed By F.F. Wright  
March 1934  
Drawn By E.H. Cera  
June 1936

1545  
INDEXED ON MAP