

Road. 147

Jefferson & Monroe Township

~~Road. 147~~ . No Record of Width.
~~Station~~ 15' from ~~E~~ for ~~30'~~ Road.

See Book 451

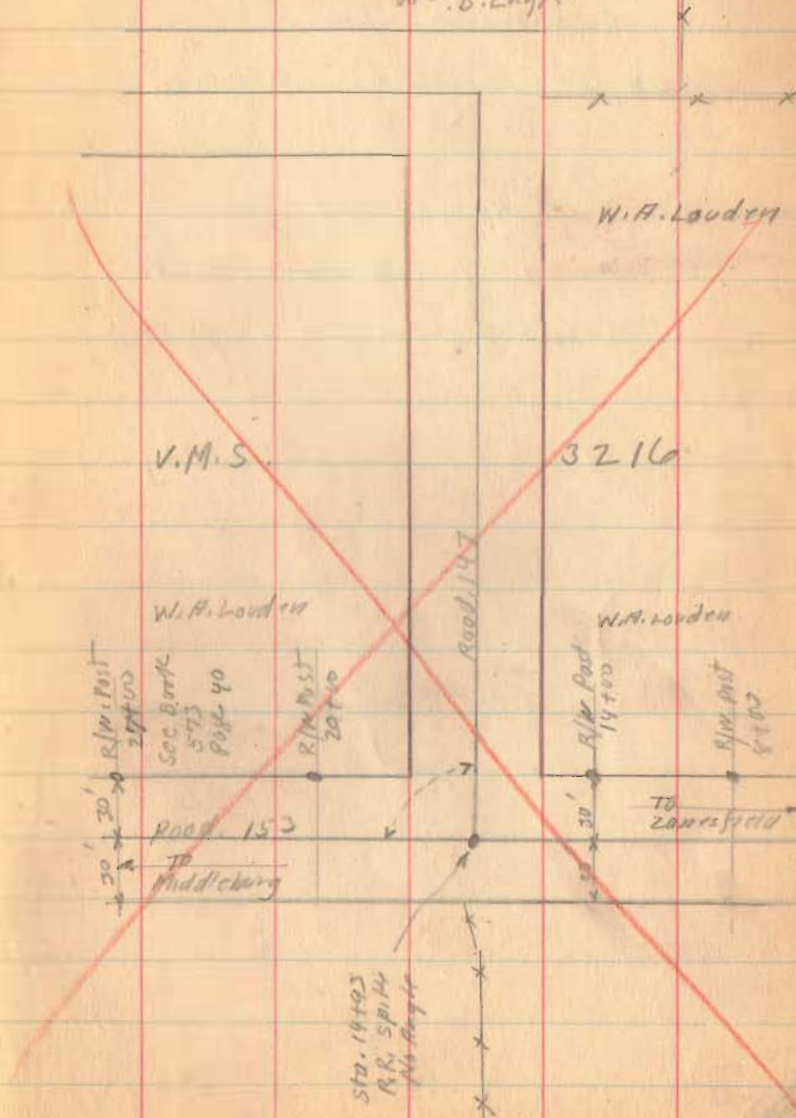
1557

April 4 - 1924
Clear
Night
Ed. cart

28

V.M.S. 7318

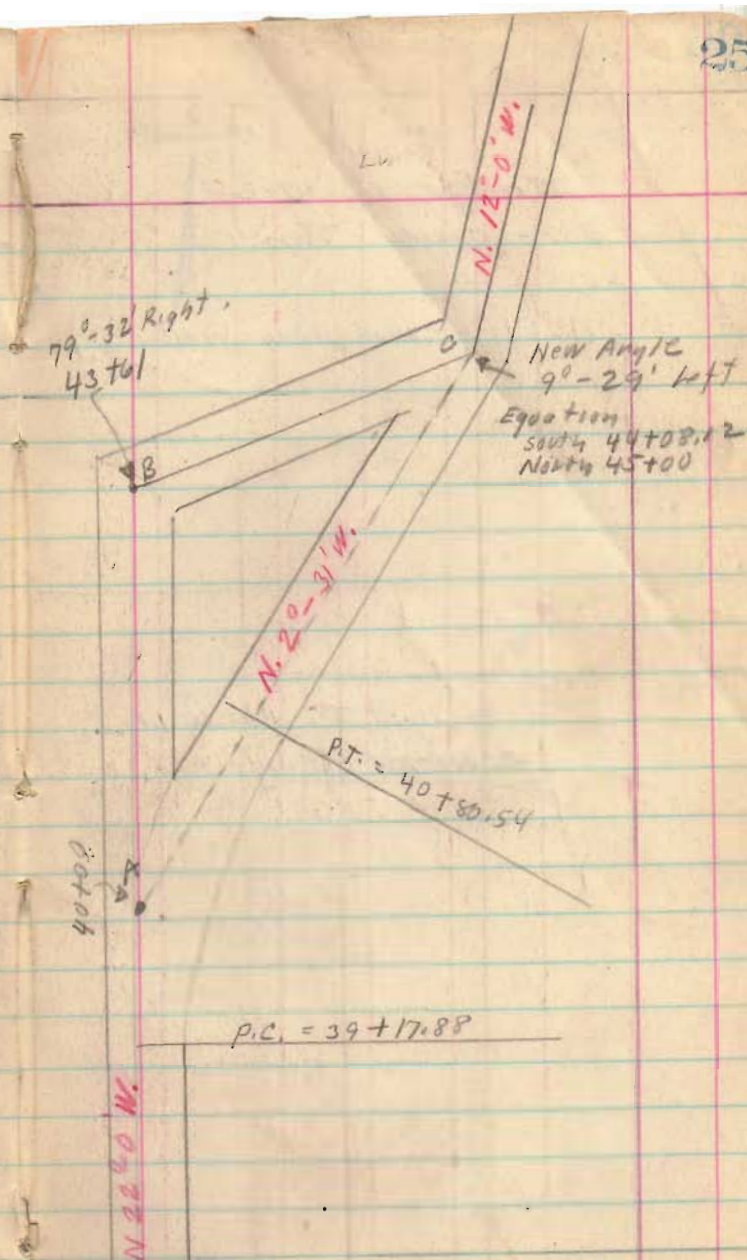
W^m. B. Engle



Road 147
See Page 32
April - 9 - 1938

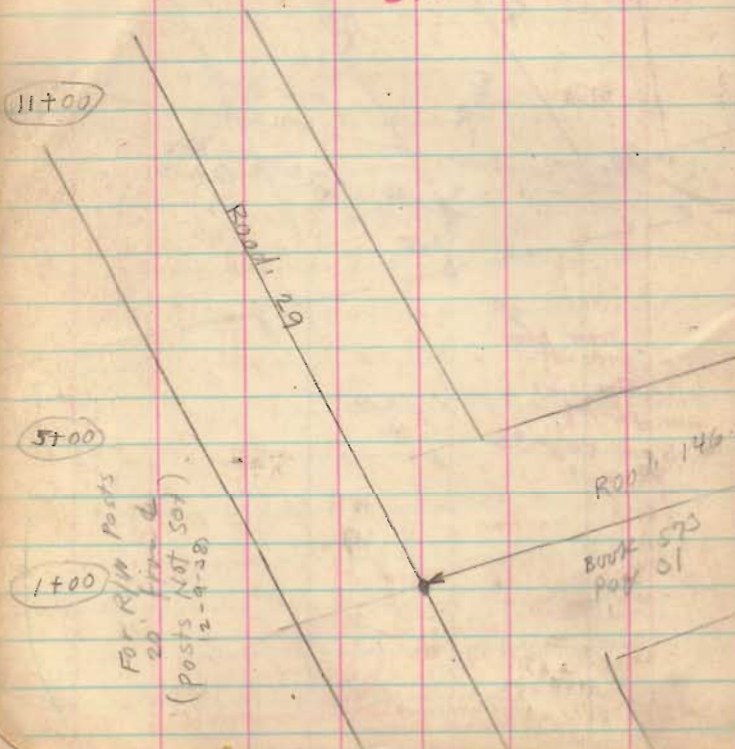
$$\begin{aligned} AB &= 361 \\ BC &= 139 \\ AC &= 409.7 \\ P.I. &= 40+00 \\ P.C. &= 39+17.88 \\ P.T. &= 40+80.54 \\ L &= \frac{100\Delta}{D} = 162.36 \\ L &= Arc = 162.66 \\ T &= 82.12 \\ R &= 478.34 \\ E &= 7.00 \\ \Delta &= 19^{\circ} 29' \\ D &= 12^{\circ} \end{aligned}$$

1557
INDEXED ON MAP



Road 147
 Monroe & Jefferson Twp.

No Road Record,
 stated for 40' Road (except Hill)
 1-3-5-7-9 etc,
 see Book 622 for X-500
 " " " " Levels
 " " " " 610 " Levels



Feb-10-38
 Re Staked
 G. Wilgus
 R. Kimwood
 W. Wright

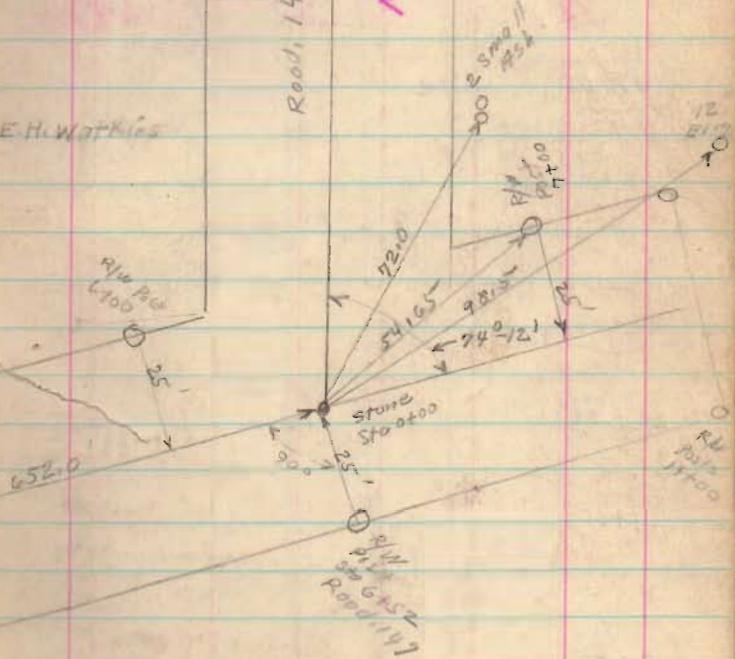
July-22-1936
 Nice day
 F. Wright
 G. Wilgus
 J. Montgomery
 Max James
 Roe Roberts
 Riley

15' 00" 509
 23.1
 9788

N-22 W
 Needle
 N-22 20' W.

The Donald
 Realty Co.

E.H. Watkins



1557

INDEXED ON MAP

Road 147

41+00

Nail

37+00

31+00

27+00

21+00

17+00

7-22-36
Restok

Lane 36+50

N 22°-0' W

Frank Bailey

Eth. Watkins

Posts

17.2

22.1

28.5

10' Elm

Placed Hdw
29+40
No Angle

10' Oak

♀ Wood
Bridge
27+7119.1
23+00
Concret
Post

INDEXED ON MAP

53+99 North 4th East

Road 147

58+151 Sta. 58+051 from E on Top

Road 27 W

Top Line Surrey Soc Page 29

See Book 573 Page 59 for Top Line Surrey

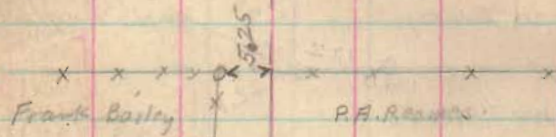
55-193 + Roadway

S. 68 W Needle

S 67-50 W

51+00

47+10



44+95 South 4th East

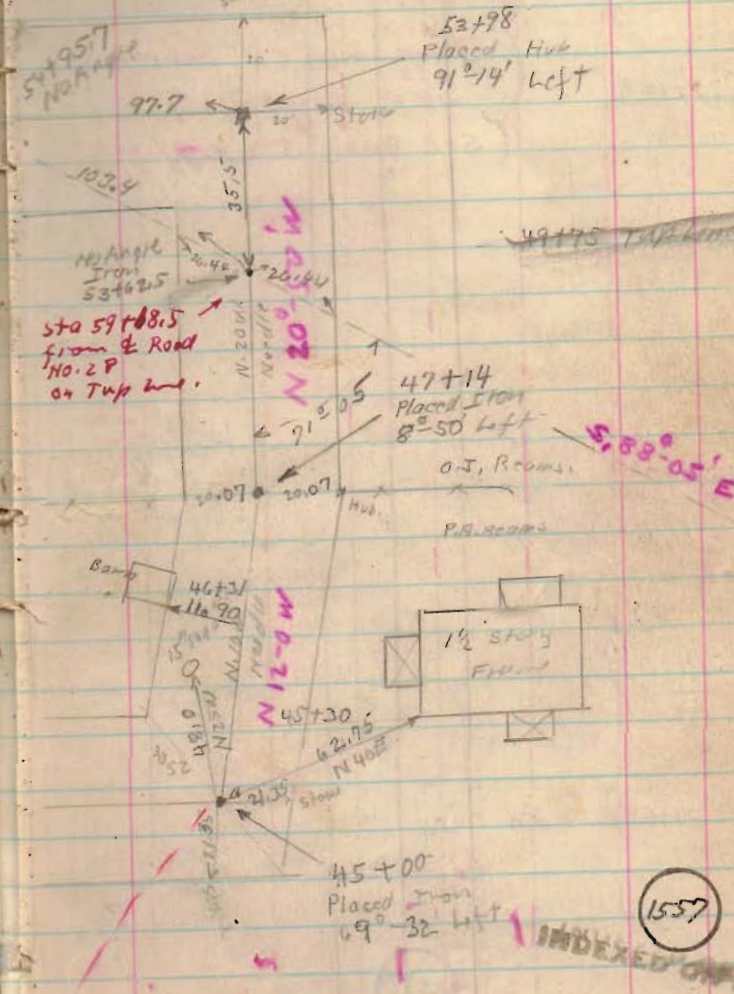
43+61 North only.

45+61 Placed Hub 79°-32' Right

N 57-32 E N. SEE.

See Page 25 for cut off.

N 22-0' W

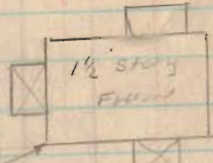


53+98 Placed Hub 91°-14' Left

Sta 59+08.5 from E Road No. 27 on Top line.

47+14 Placed Iron 8°-50' Left

O.J. Reams P.A. Reams



45+00 Placed Iron 69°-32' Left

1557

INDEXED ON...

Road 147

(Top line Sorry)
See Page 29
(See Book 573 Page 34)

77+00

71+00

67+00

63+00

59+00

57+68

South Only

1557

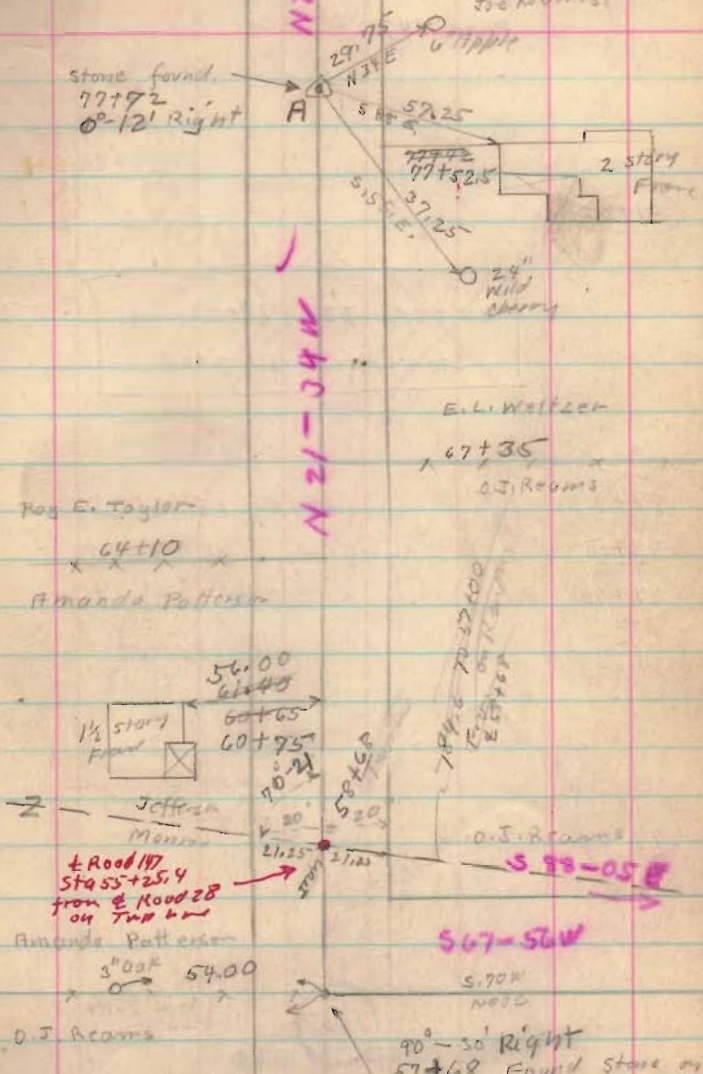
INDEXED ON MAP

July-23-1936
cloudy - 8001
F. Wright
G. Williams
J. M. ...
MIX TOMES
See Roberts

stone found.
77+72
0°-12' Right

N 21-12 W

N 21-34 W



Pos E. Taylor

64+10

Amanda Patterson

1/2 story Frame

56.00
61+40

60+65
60+75

Jefferson
Manson

+ Road 147
Sta 55+25.4
from E Road 28
on Top line

Amanda Patterson

5' oak 54.00

O. J. Reams

E. L. Welfer

67+35

O. J. Reams

O. J. Reams

S 99-05 E

S 67-56 W

S. 90 W
NOTE

90°-30' Right
57+68 Found Stone on

Ground (Not Set) Mr. Reams says
this stone Used by Henry Moore
for Corner. Set Stone on end on 27th

Road 147

~~91100~~

~~82+20 To 90+00~~
~~Staked for 50 Road~~

~~89+00 P.T. 89+00 25' from~~~~88+20 P.I. Right only 26' from~~~~87+40 P.C.~~~~85+00~~~~79+00~~

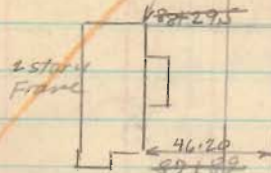
1557
 INDEXED ON MAP

Change on
 Hill see
 Page 39

88+77.5
 small stone found

30' width
 center
 80+20
 P.I. and E.M.
 34°-10' Right

T = 30'
 E = 6.00'
 P.C. 87+20
 P.L. = 88+20
 P.T. = 89+00



H.R. R. M.L. Hussey
 79+00
 78+95
 E.L. Walzzer

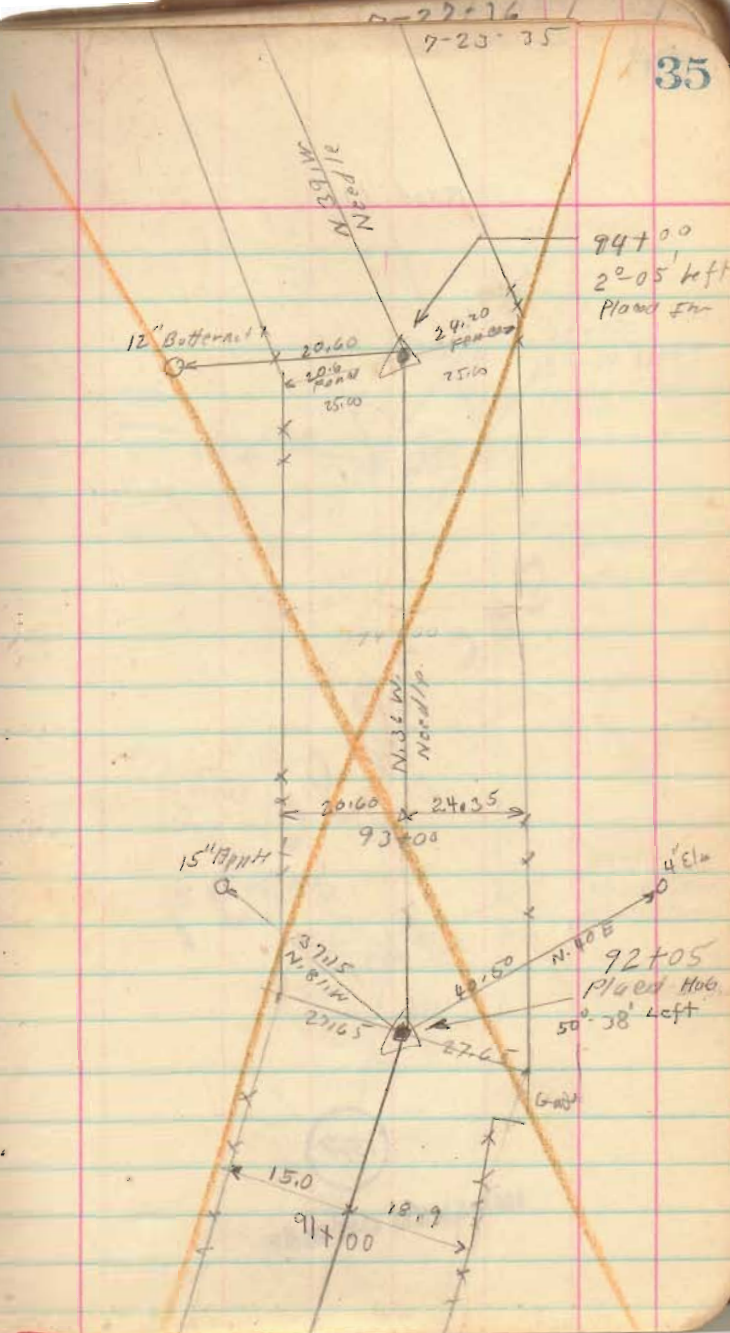
N. 21°-22' W

Road 147

See
Page 39

1557

INDEXED ON MAP

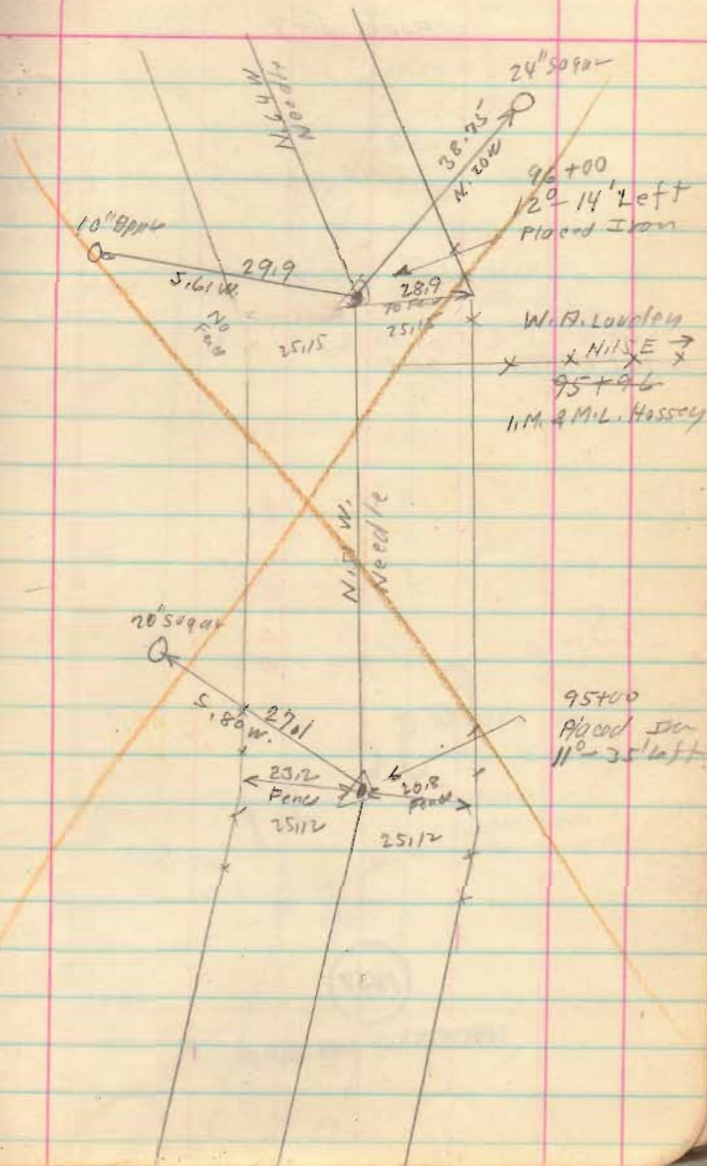


Road 147

see
page
39

1557

INDEXED ON MAP



Road 147

New Line
see Page 34 for old line

88+35 To 98+00 stakes 25' from E

N 13-32 E

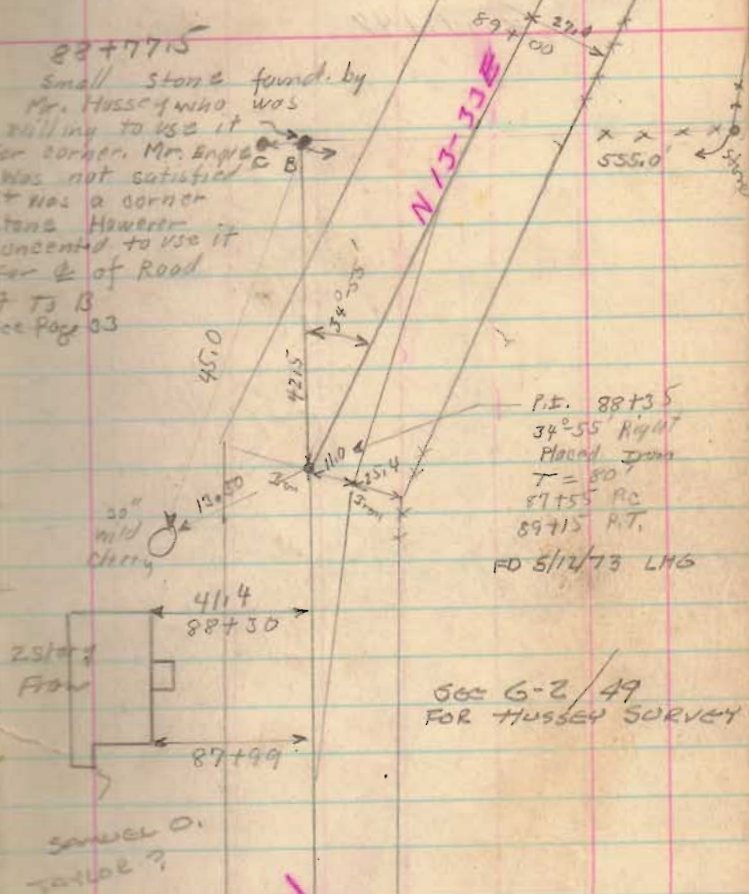
1557

INDEXED ON MAP

7-27-36

Stone C found
July -28-1936
6" x 3"
50 West of Stone B.

88+77.5
Small stone found by
Mr. Hussey who was
willing to use it
for corner. Mr. Engle
was not satisfied
it was a corner
stone. However
concentrated to use it
for E of Road
A T B
See Page 33



P.T. 88+35
34°55' Right
Placed Iron
T = 80'
87+55 P.C.
89+75 P.T.
FD 5/12/73 LMS

666 G-2/49
FOR HUSSEY SURVEY

Samuel O.
Taylor ?

N 21-22 W

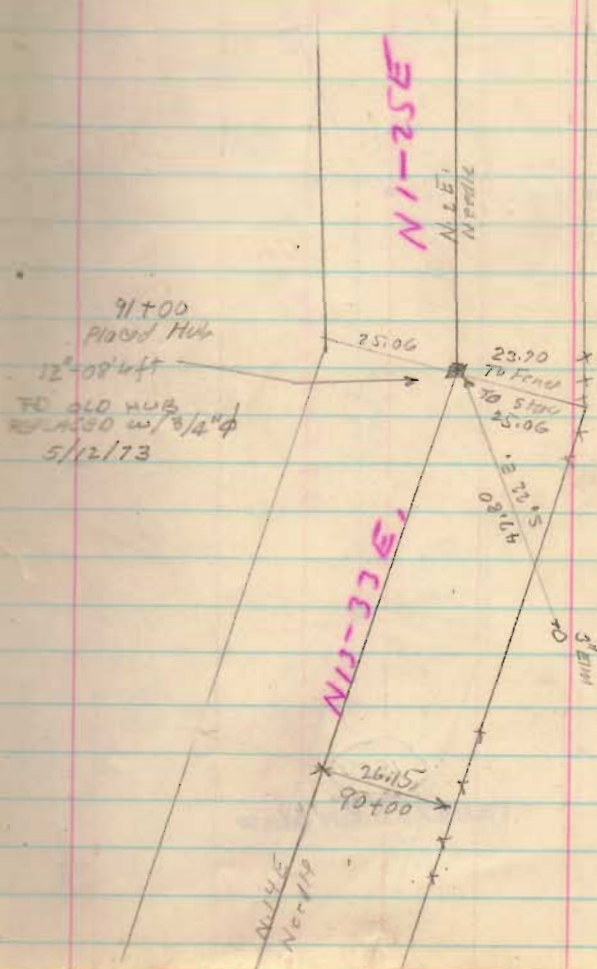
Road 147

N1-25E

1557
INDEXED ON MAP

N1-25E

July - 28 - 1932
Clear - warm
F. Wright
S. Wilcox
J. Montgomery
Max Jones
Joe Roberts



Road 147

N 43-37W

N 49-12W

1557

INDEXED ON MAP

N 43-37W

7-28-30

N 49-12W

N 43-37W

28.15
15° 11' 11" S 35° WPlaced Hubs
96+00
11' 0" left.

N 49-12W

N 43-37W

N 49-12W

33.6
70 Feet

25.03

48.95
N 15° E5-25' left
95+00
Placed HubKoudett
95+82
Hussey

2" Walnut

24" 5090

36.4
N 15° W

Road 147

N 91-15 W

1557

INDEXED ON MAP

101 + 21
Stone
See Page 37
87255'R.R. Spike
113+37
See Page 38

N 113-39 E

Road 153
See Page 38

N 91-16 W

N. 25' W
Needle

25119

25119

97 + 24
Hub Pinned
See Page 37
14°-04' left

Engle

Hussey