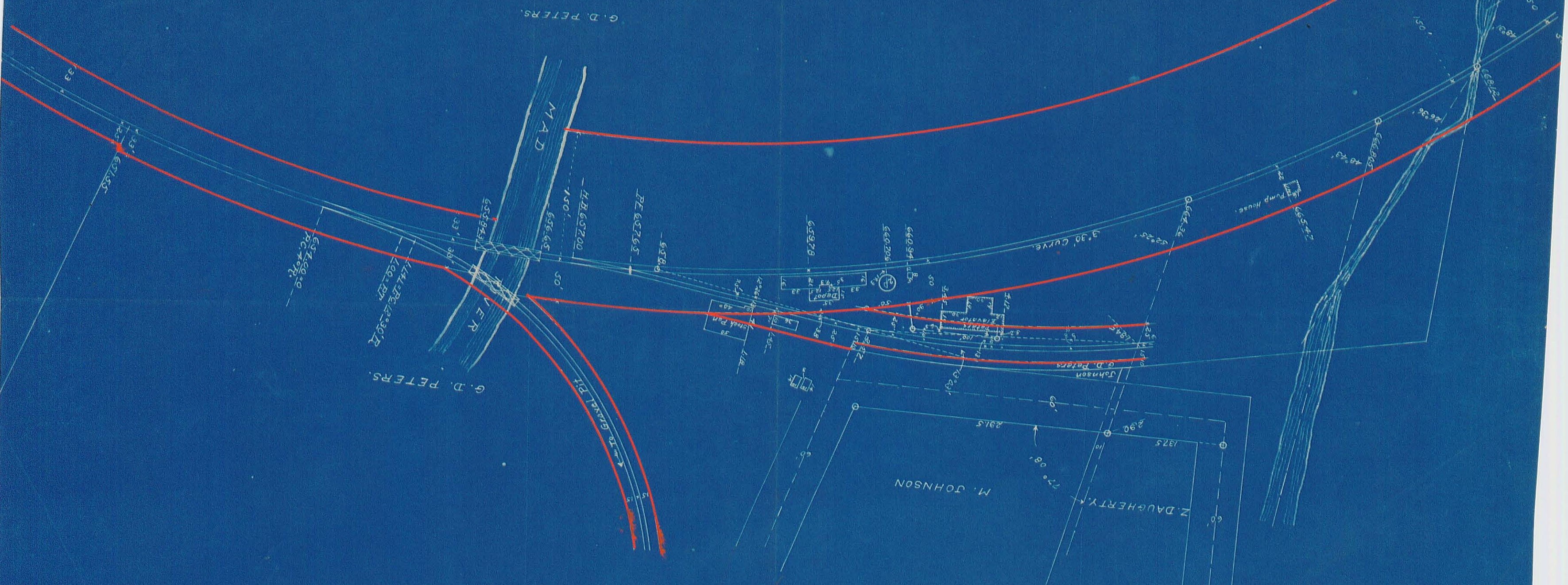


M-10

PROJECT ON MAP  
1897 55

M-10



M-10

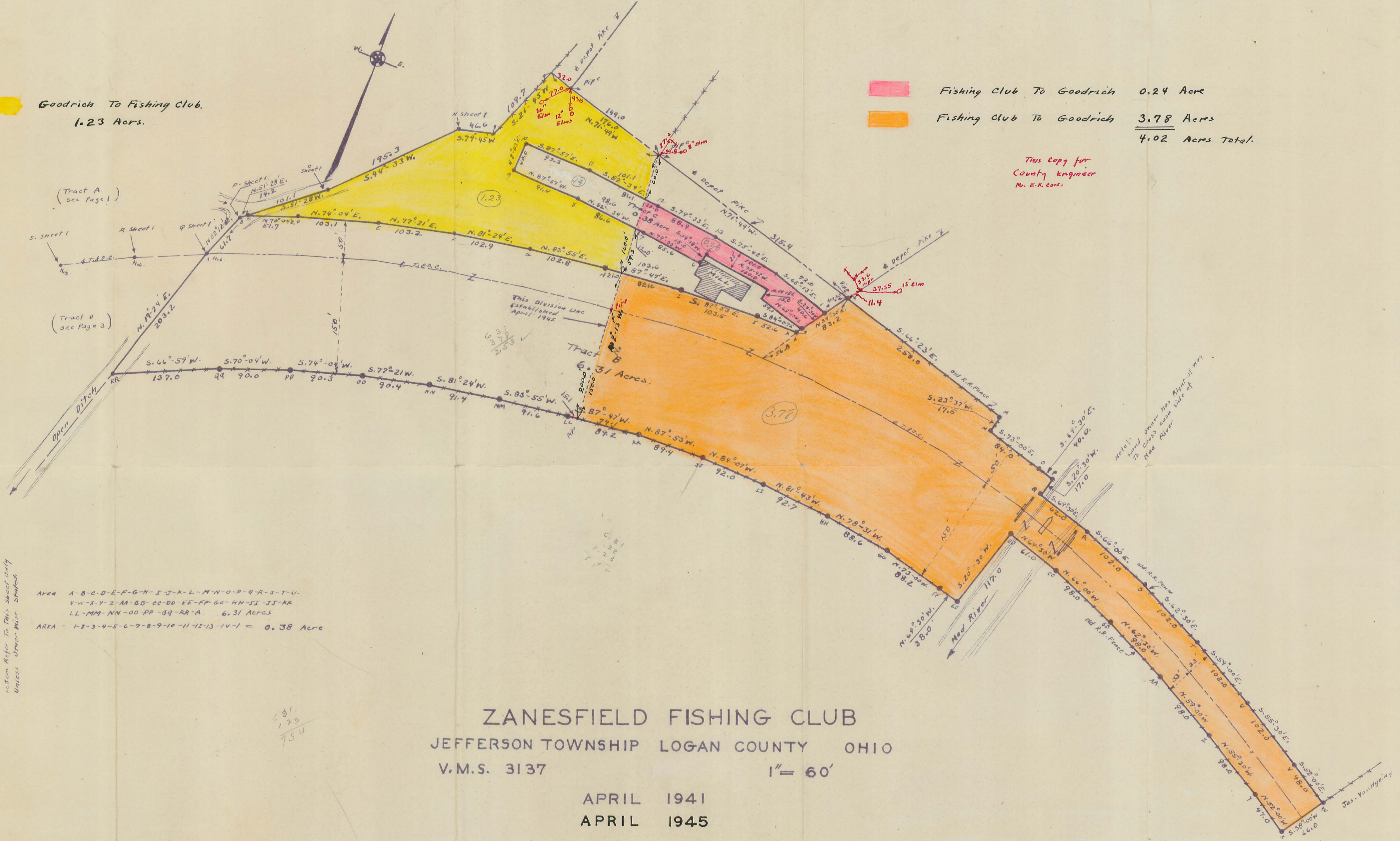
Z AND SFIELD  
STATION GROUND.  
Scale 1"=100'  
12-22-05.

M-10

Goodrich To Fishing Club.  
1.23 Acers.

<span style="display:inline-block; width:15px; height:10px; background-color: #FF69B4; border: 1px solid black;"></span>	Fishing Club To Goodrich	0.24 Acres
<span style="display:inline-block; width:15px; height:10px; background-color: #FF8C00; border: 1px solid black;"></span>	Fishing Club To Goodrich	3.78 Acres
		<u>4.02 Acres Total.</u>

This Copy for  
County Engineer  
M. E. R. Corp.

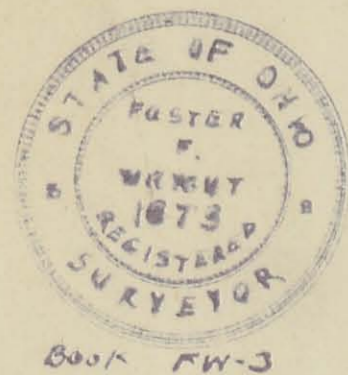


Area A-B-C-D-E-F-G-H-I-J-K-L-M-N-O-P-Q-R-S-T-U.  
 V-W-X-Y-Z-M-BB-CC-DD-EE-FF-GG-HH-II-JJ-KK  
 LL-MM-NN-OO-PP-QQ-RR-A 6.31 Acres  
 AREA - 1-2-3-4-5-6-7-8-9-10-11-12-13-14-1 = 0.38 Acre

**ZANESFIELD FISHING CLUB**  
 JEFFERSON TOWNSHIP LOGAN COUNTY OHIO  
 V.M.S. 3137

APRIL 1941  
 APRIL 1945

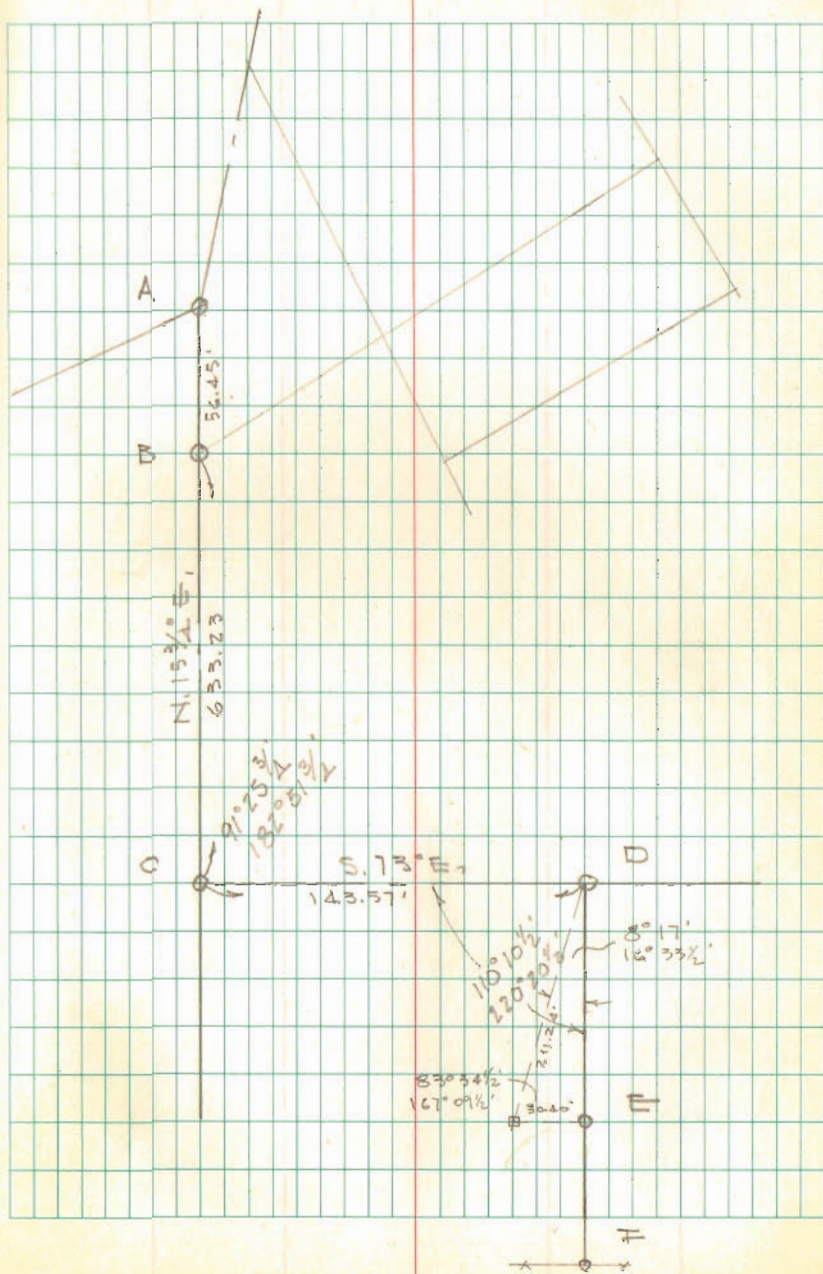
1" = 60'



INDEXED ON MAP  
1897 4D

To: G. & S.  
 1.50 - 113.55  
 1.23  
 To: Goodrich  
 4.02 - 11.06

- A =  $\frac{3}{4}$ "  $\phi$  Bar Found Bent  
 B = R.D.  $\frac{3}{4}$ " Found  
 C =  $1\frac{1}{2}$ " pipe Found 12" deep } Set  $\frac{3}{4}$ "  $\phi$   
 D =  $\frac{1}{2}$ " Pipe Found 6" Deep } inside of opp  
 E =  $\frac{1}{2}$ " Pipe Found bent - Replaced with  $\frac{5}{8}$ "  $\phi$  Bar } to surface  
 F =  $\frac{1}{2}$ "  $\phi$  BAR Set in Fence (T.A.O.C. P/W)  
 0.5' W. of br. post for Nfs. fence



INDEXED ON MAP

1897