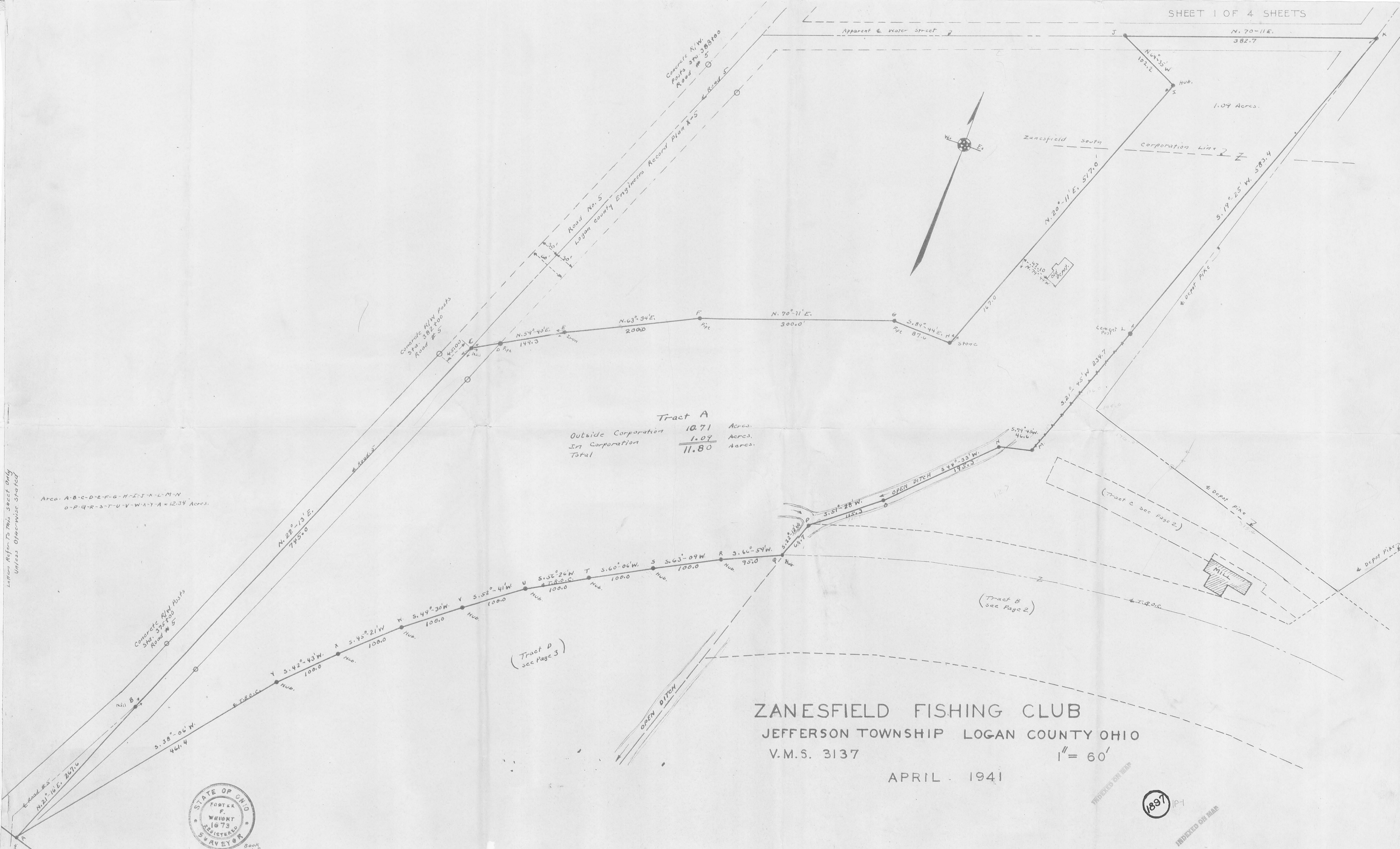


Letters Refer to this sheet only  
Unless otherwise stated

Arco. A-B-C-D-E-F-G-H-I-J-K-L-M-N  
O-P-Q-R-S-T-U-V-W-X-Y-A = 12.34 Acres.



ZANESFIELD FISHING CLUB  
JEFFERSON TOWNSHIP LOGAN COUNTY OHIO  
V.M.S. 3137

APRIL 1941

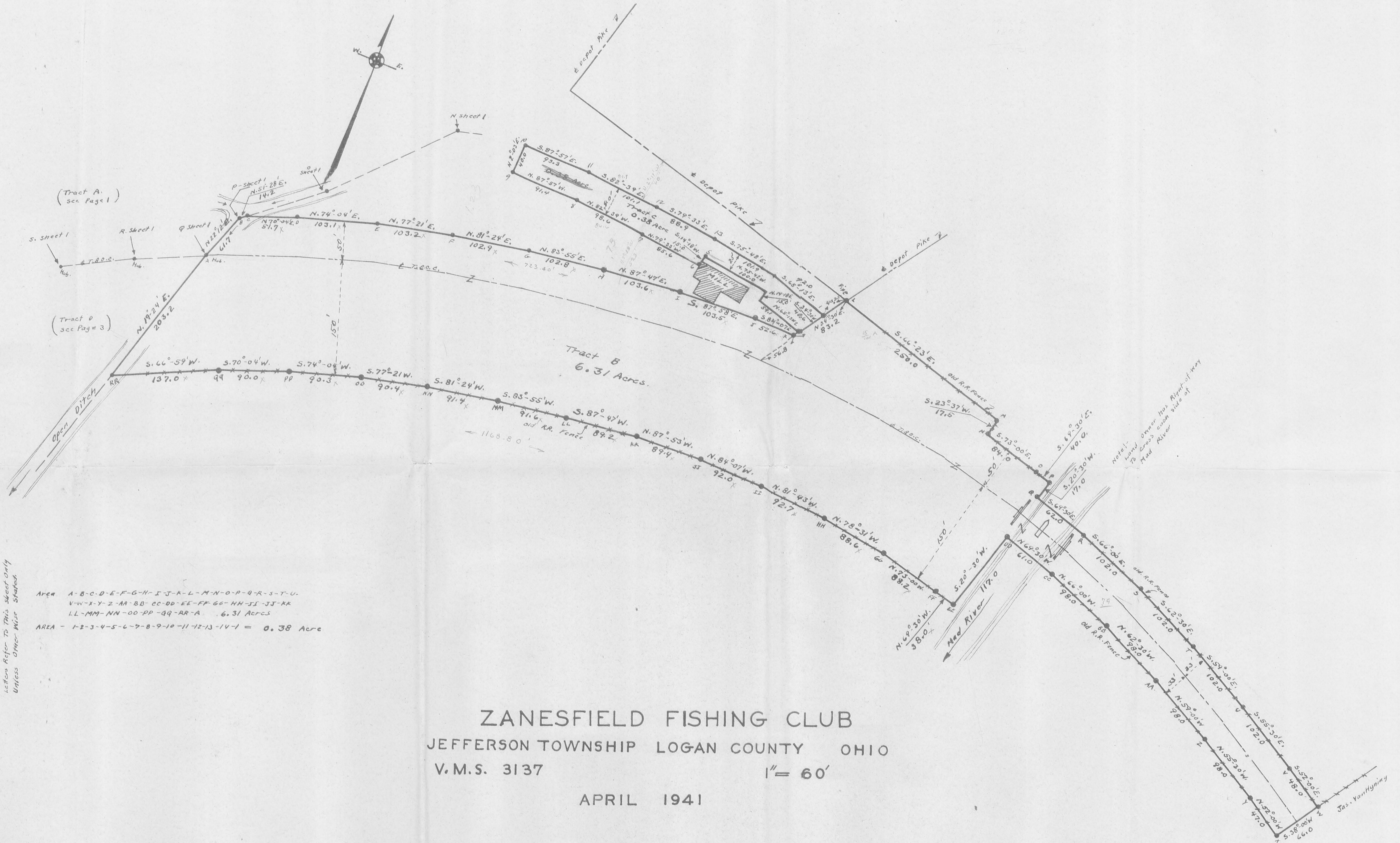
1" = 60'



INDEXED ON MAP



INDEXED ON MAP



Area A-B-C-D-E-F-G-H-I-J-K-L-M-N-O-P-Q-R-S-T-U  
 V-W-X-Y-Z-AA-BB-CC-DD-EE-FF-GG-HH-II-JJ-KK  
 LL-MM-NN-OO-PP-QQ-RR-A 6.31 Acres  
 AREA - 1-2-3-4-5-6-7-8-9-10-11-12-13-14-1 = 0.38 Acre

Letters Refer to this sheet only  
 Unless Other-Wise Stated

ZANESFIELD FISHING CLUB  
 JEFFERSON TOWNSHIP LOGAN COUNTY OHIO  
 V.M.S. 3137 1" = 60'  
 APRIL 1941



INDEXED ON MAP  
 1097 1P-2

(Tract A  
see Page 1)

(Tract B  
see Page 2)

Tract D  
9.35 Acres

Tract E  
8.52 Acres

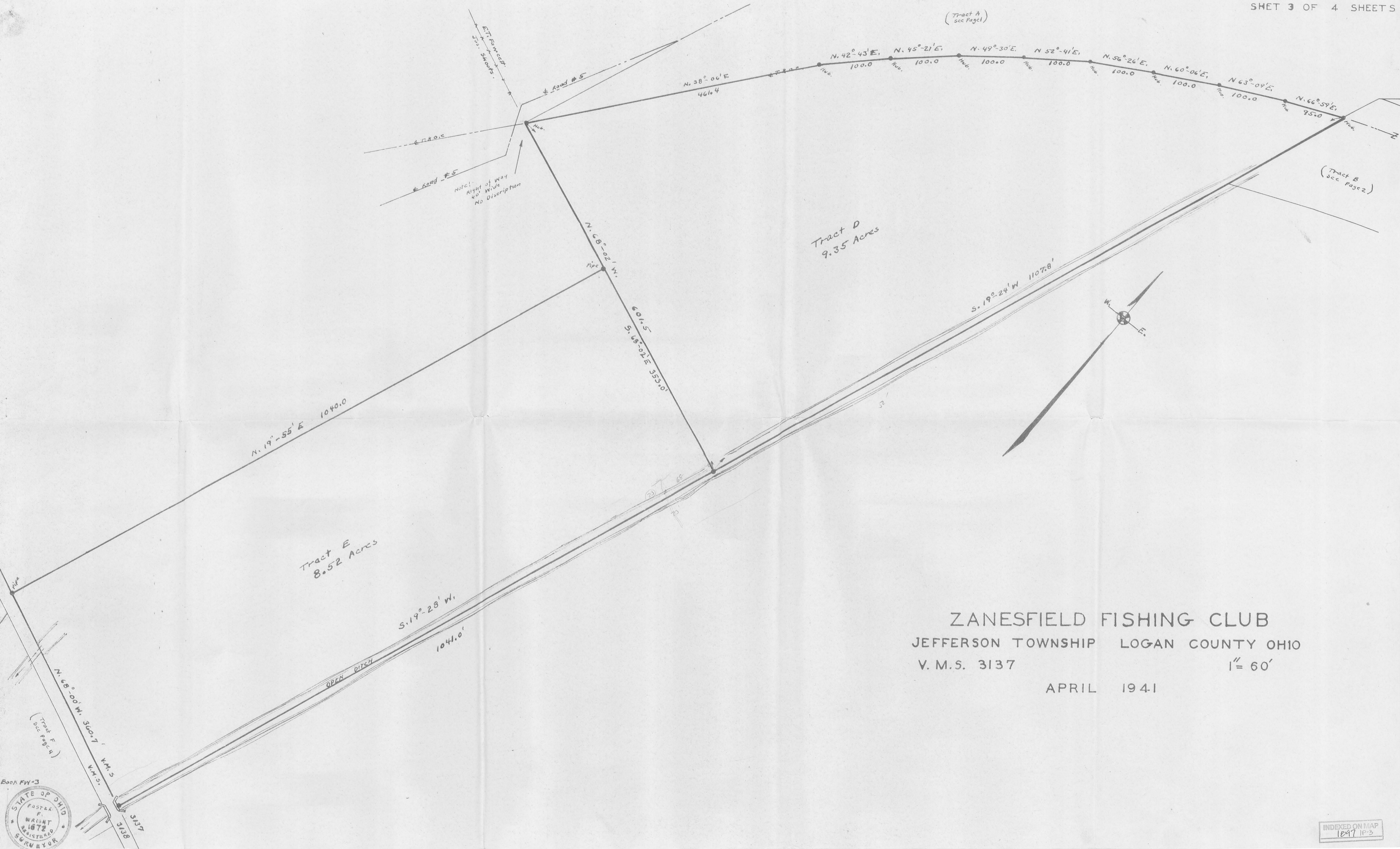
ZANESFIELD FISHING CLUB  
JEFFERSON TOWNSHIP LOGAN COUNTY OHIO  
V.M.S. 3137 1" = 60'

APRIL 1941

Book FW-3



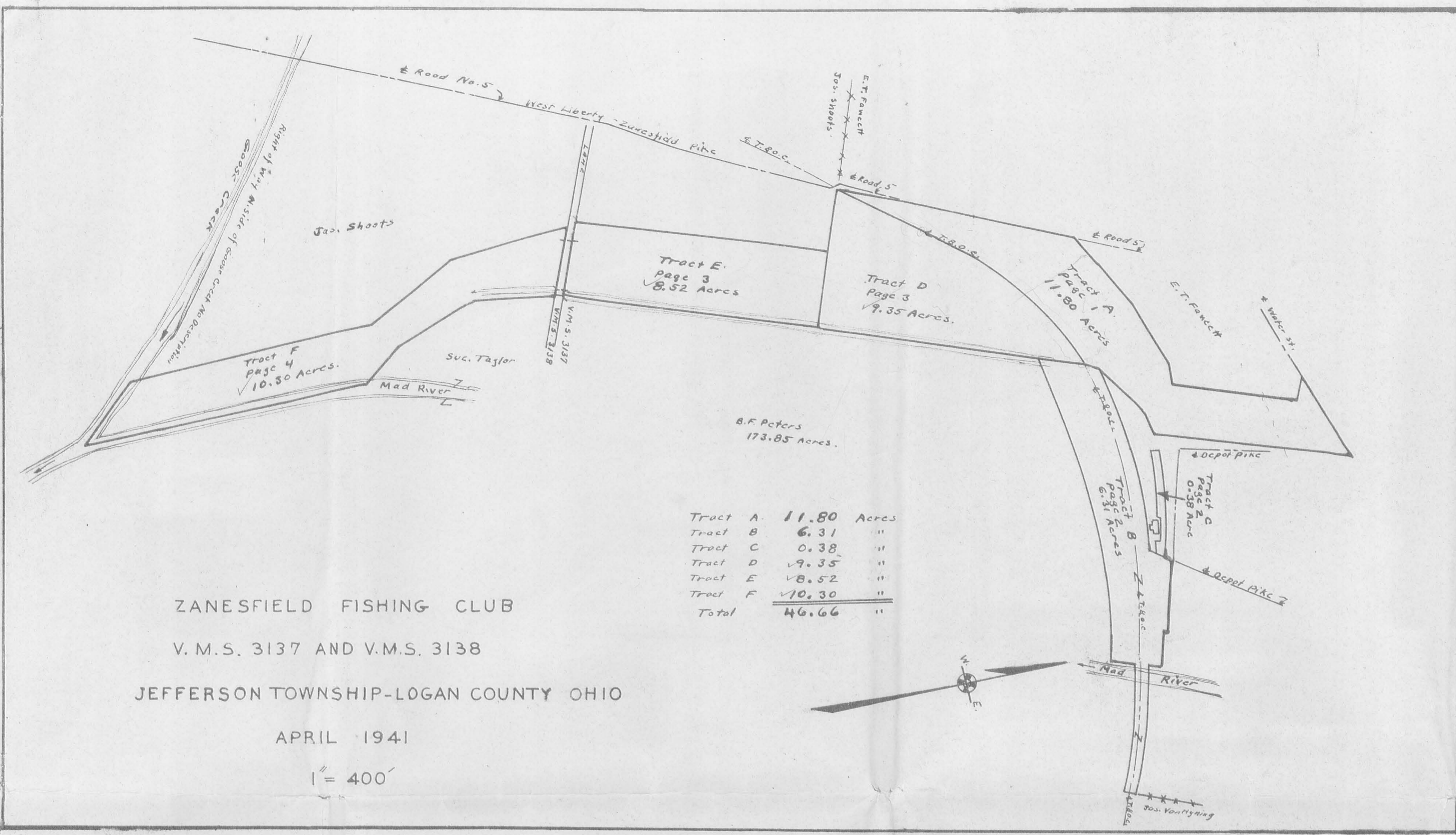
INDEXED ON MAP  
1247 1P-3



NOTE:  
RIGHT OF WAY  
40' WIDE  
NO DIScription

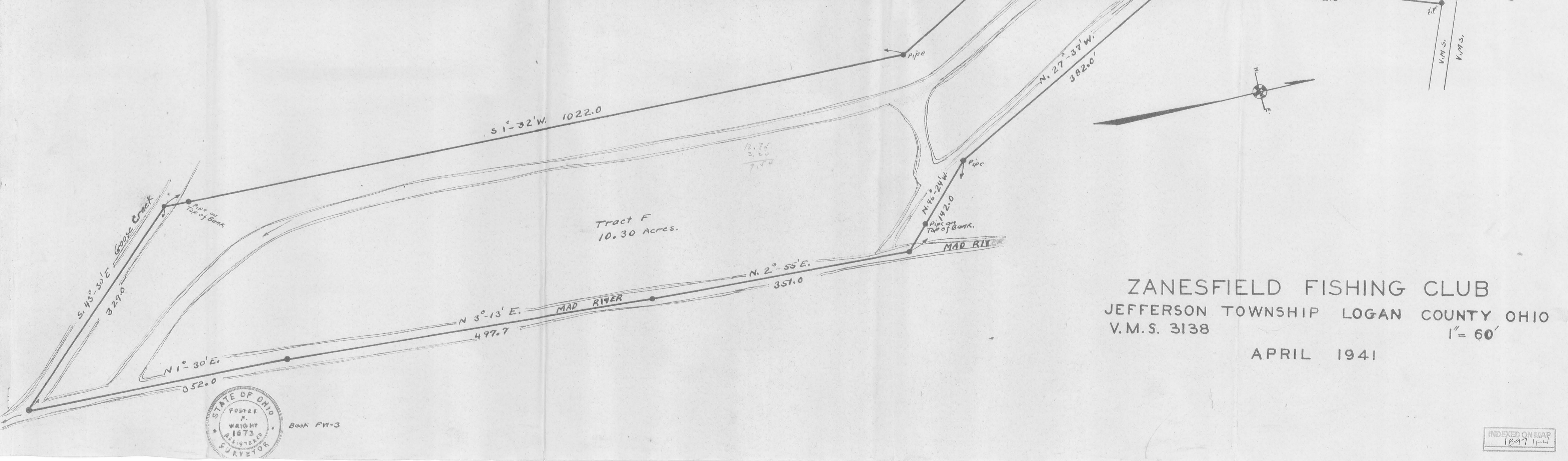
(Tract F  
see Page 4)

3137  
3138



ZANESFIELD FISHING CLUB  
V.M.S. 3137 AND V.M.S. 3138  
JEFFERSON TOWNSHIP-LOGAN COUNTY OHIO

APRIL 1941  
1" = 400'



ZANESFIELD FISHING CLUB  
JEFFERSON TOWNSHIP LOGAN COUNTY OHIO  
V.M.S. 3138

APRIL 1941



Zanesfield Rod & Gun Club - Black Survey Jefferson Township  
Feb. 1959 0.09 Acre

The following described land in Jefferson Township, Logan County Ohio  
and being in V.M.S. 3137

The following described being 0.09 of one acre out of the N.W. corner  
of Curtis Black's present 172.60 acre tract the 0.09 acre tract being  
more fully described as follows: Beginning at the N.W. corner of said  
Black 172.60 acre tract and in the south line of the Zanesfield Rod &  
Gun Club's 7.04 acre tract and also being the N.E. corner of a 0.52  
acre tract as described in Logan County Recorder's Deed Vol. 252 page  
13 thence with the south side of said 7.04 acre tract N. 68 - 28 E.  
26.4 feet to an iron pipe the last described line following the fence  
line of the former south line of the T. & O. C. right of way thence  
S. 19 - 28 W. 212.0 feet to an iron pipe thence turning ninety degrees  
to the right and measuring N. 70 - 32 W. 20.00 feet to an iron pipe in  
the east line of the said 0.52 acre tract thence with the east side of  
said 0.52 acre tract N. 19 - 28 E. 196.3 feet to the place of ~~beginning~~  
beginning said described tract containing 0.09 of one acre

cc  
Logan County Engineer



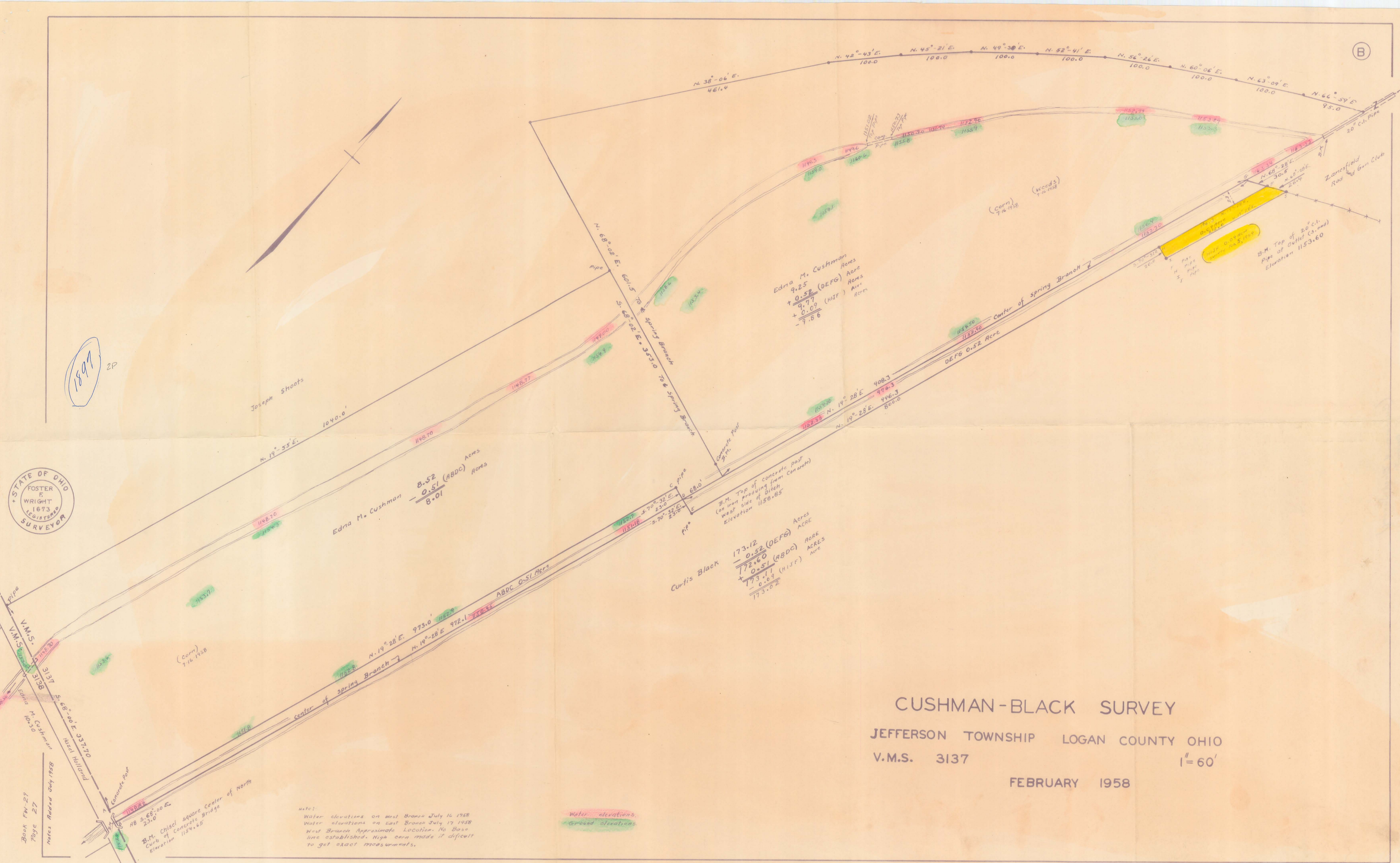
INDEXED ON  
1297 20

(B)

1897  
2P



Book FW-27  
Page 27  
Notes Added July 1958



note:  
Water elevations on West Branch July 16 1958  
Water elevations on East Branch July 17 1958  
West Branch Approximate Location. No Base  
line established. High corn made it difficult  
to get exact measurements.

Water elevations  
Ground elevations

# CUSHMAN-BLACK SURVEY

JEFFERSON TOWNSHIP LOGAN COUNTY OHIO  
V.M.S. 3137

FEBRUARY 1958

1" = 60'

Edna M. Cushman  
9.25 Acres  
+ 0.52 (DEFG) Acres  
+ 0.77 (HIF) Acres  
+ 0.09  
- 9.66

Edna M. Cushman  
8.52 Acres  
- 0.51 (ABDC) Acres  
8.01

Curtis Black  
173.12 (DEFG) Acres  
- 0.52 (ABDC) Acres  
172.60  
+ 0.51 (ABDC) Acres  
+ 0.09 (HIF) Acres  
173.02

B.M. TOP of 20" c.i. Pipe of Outlet (S. end)  
Elevation 1153.60

B.M. TOP of concrete post (on iron post) (west side of ditch)  
Elevation 1158.85

B.M. Chisol Square Center of North  
Curb of Concrete Bridge  
Elevation 1154.65

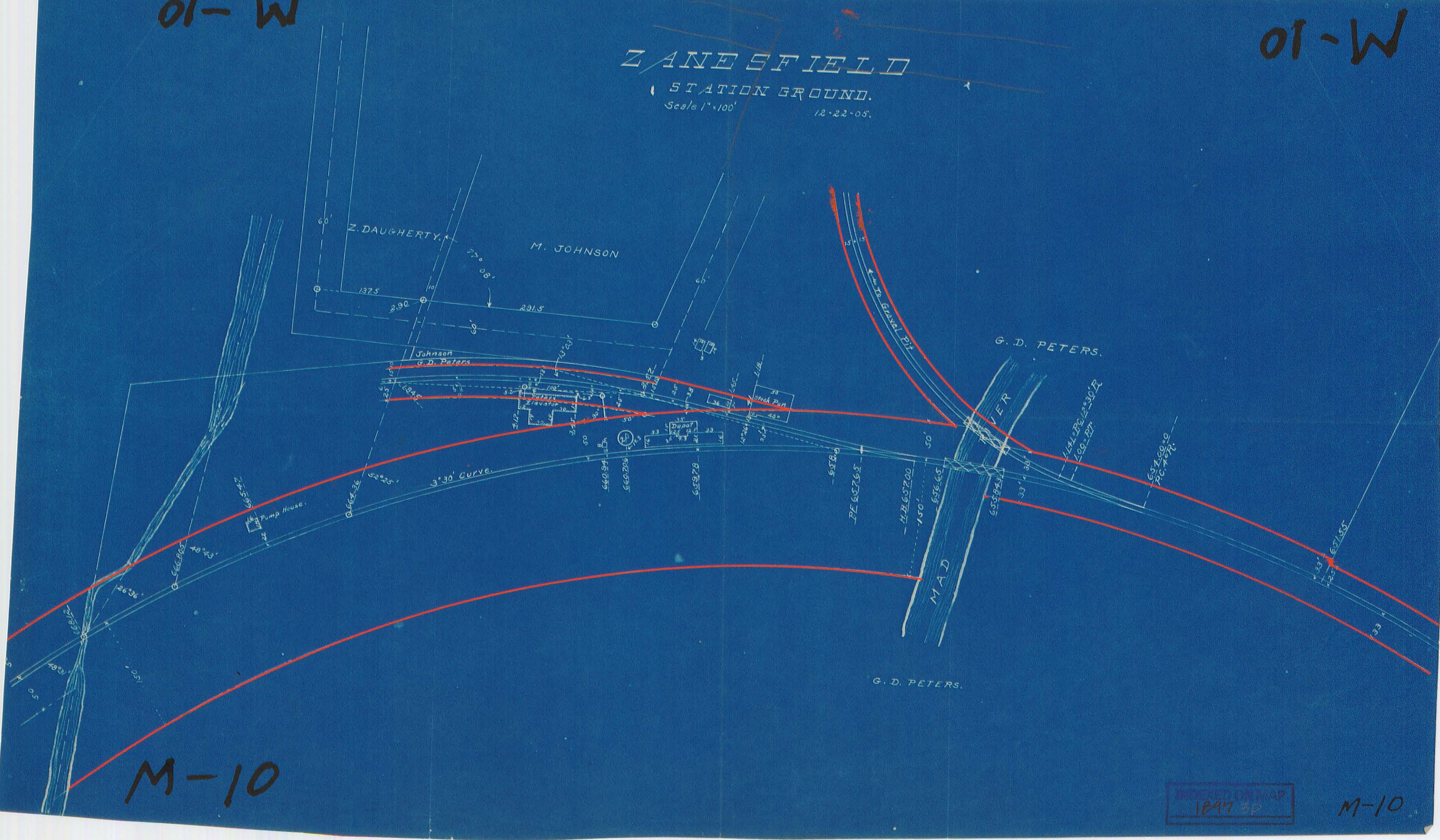
01-W

01-W

# ZANE FIELD

## STATION GROUND.

Scale 1"=100' 12-22-05.



M-10

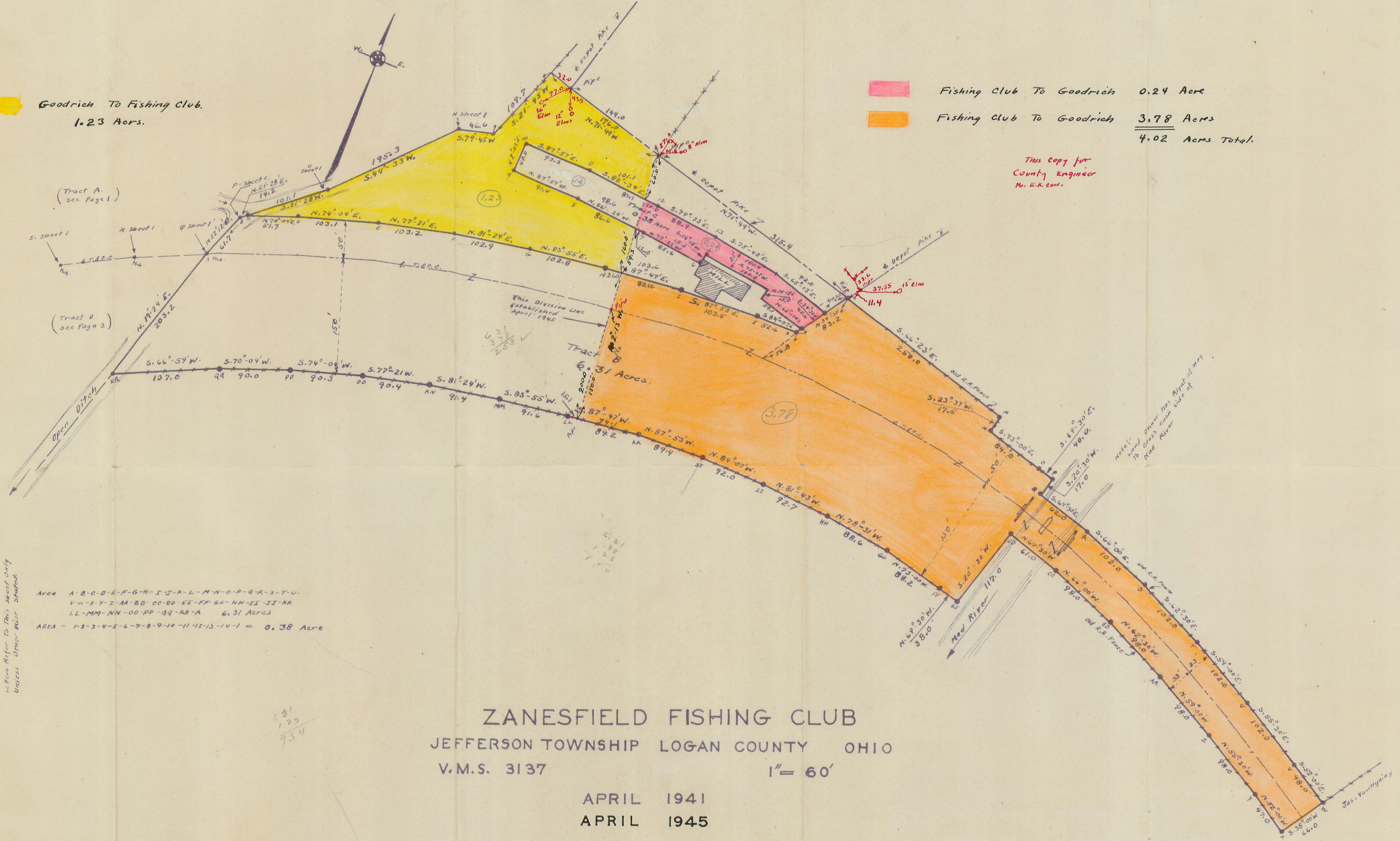
RECORDED ON MAP  
1897 5P

M-10

Goodrich To Fishing Club.  
1.23 Acers.

<span style="display:inline-block; width:15px; height:10px; background-color: #FF69B4; border: 1px solid black;"></span>	Fishing Club To Goodrich	0.24 Acres
<span style="display:inline-block; width:15px; height:10px; background-color: #FFA500; border: 1px solid black;"></span>	Fishing Club To Goodrich	3.78 Acres
		<u>4.02 Acres Total.</u>

This Copy for  
County Engineer  
M. E. R. Corp.



Area A-B-C-D-E-F-G-H-I-J-K-L-M-N-O-P-Q-R-S-T-U.  
 V-W-X-Y-Z-M-BB-CC-DD-EE-FF-GG-HH-II-JJ-KK  
 LL-MM-NN-OO-PP-QQ-RR-A 6.31 Acres  
 AREA - 1-2-3-4-5-6-7-8-9-10-11-12-13-14-1 = 0.38 Acre

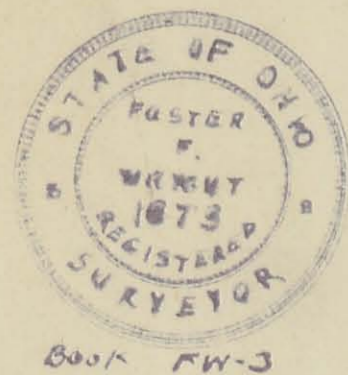
When Refer to this sheet only  
Unless Other-Wise Shaded

31  
123  
754

ZANESFIELD FISHING CLUB  
 JEFFERSON TOWNSHIP LOGAN COUNTY OHIO  
 V.M.S. 3137

APRIL 1941  
APRIL 1945

1" = 60'



BOOK MW-3

INDEXED ON MAP  
1897 4D

To: G. & S.  
 1.50 - 113.55  
 1.25  
 To: Goodrich  
 4.02 - 11.06



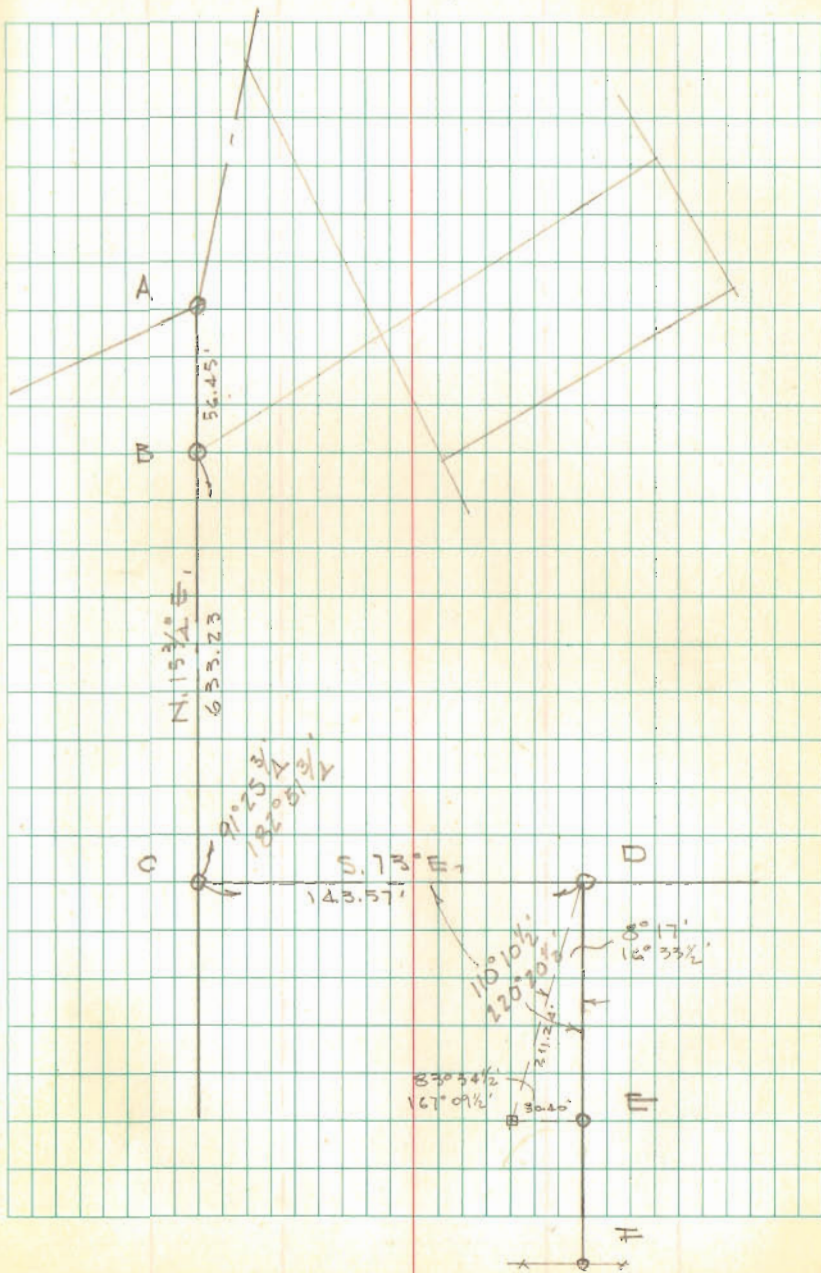
24. ZANESFIELD Rod & Gun Club

- A =  $\frac{3}{4}$ "  $\phi$  Bar Found Bent
- B = R.D.  $\frac{3}{8}$ " Found
- C =  $1\frac{1}{2}$ " pipe Found 12" deep
- D =  $\frac{1}{2}$ " Pipe Found 6" deep
- E =  $\frac{1}{2}$ " Pipe Found bent - Replaced with  $\frac{5}{8}$ "  $\phi$  Bar
- F =  $\frac{1}{2}$ "  $\phi$  Bar Set in Fence (T.A.O.C. P/W)  
0.5' W. of br. post for Nfs. fence

Dodson  
Aerial

4/11/70

38



INDEXED ON MAP

1897