

KTC 'L' 12-27-96 SMLY OK ✓



Lee Surveying and Mapping Co., Inc.

Farm Surveys • Lot Surveys • Topography • Subdivisions • Construction Layout

117 NORTH MADRIVER STREET
BELLEFONTAINE, OHIO 43311

(937) 593-7335
FAX (937) 593-7444

WACKERMAN 6.451 ACRES

Lying in Virginia Military Surveys 3139 and 13593, Jefferson Township, Logan County, Ohio.

Being out of the George A. Wackerman and Diana M. Wackerman 73.33 acre tract as deeded and described in Volume 318, Page 957 of the Logan County Records of Deeds and being more particularly described as follows:

Beginning at a MAG nail set on the center-line of County Highway 5 at the southeast corner of the said 73.33 acre tract.

THENCE, with the lines of the James A. Willoby 3.55 acre tract (O.R. 98, Pg. 512, Tract I), and the Donald E. Hone original 61.33 acre tract (Vol. 340, Pg. 231), N 73°-51'-47" W, a distance of 711.67 feet to a 5/8 inch iron rod set.

THENCE, N 27°-22'-12" E, a distance of 542.81 feet to a 5/8 inch iron rod set.

THENCE, S 50°-28'-55" E, a distance of 737.78 feet to a MAG nail set.

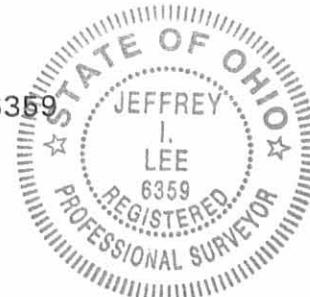
THENCE, with the center-line of County Highway 5 (60 feet wide), S 32°-42'-00" W, a distance of 250.00 feet to the point of beginning.

Containing 6.451 acres of which 0.176 acre is within the highway right-of-way. 5.533 acres are in Virginia Military Survey 3139 and 0.918 acre is in Virginia Military Survey 13593.

The basis for bearings is the center-line of County Highway 5 being S 32°-42'-00" W, and all other bearings are from angles and distances measured in a field survey by Lee Surveying and Mapping Co., Inc. on December 24, 1996.

Description prepared by:

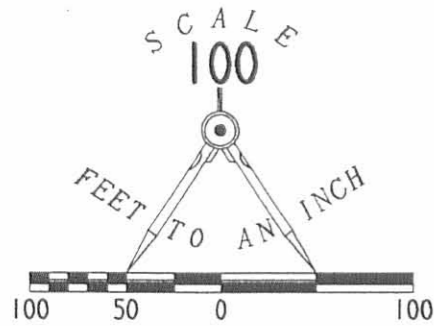
Jeffrey I. Lee
Professional Surveyor 6359
December 27, 1996



L 2488

ORIGINAL STAMP IN GREEN

INDEXED ON MAP
2843 ID



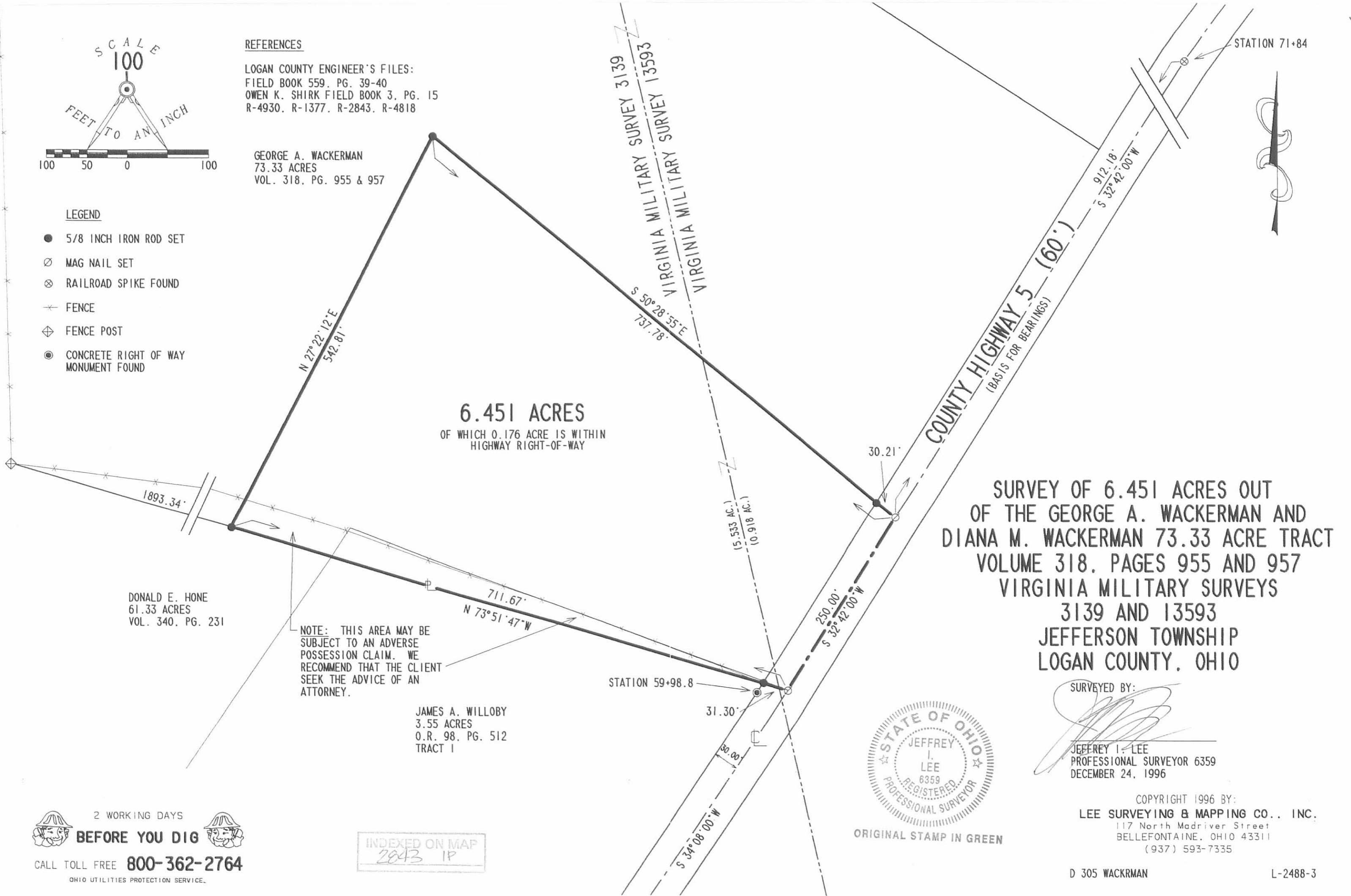
REFERENCES

LOGAN COUNTY ENGINEER'S FILES:
 FIELD BOOK 559, PG. 39-40
 OWEN K. SHIRK FIELD BOOK 3, PG. 15
 R-4930, R-1377, R-2843, R-4818

GEORGE A. WACKERMAN
 73.33 ACRES
 VOL. 318, PG. 955 & 957

LEGEND

- 5/8 INCH IRON ROD SET
- ⊗ MAG NAIL SET
- ⊗ RAILROAD SPIKE FOUND
- ✕ FENCE
- ⊕ FENCE POST
- ⊙ CONCRETE RIGHT OF WAY MONUMENT FOUND



6.451 ACRES

OF WHICH 0.176 ACRE IS WITHIN
 HIGHWAY RIGHT-OF-WAY

**SURVEY OF 6.451 ACRES OUT
 OF THE GEORGE A. WACKERMAN AND
 DIANA M. WACKERMAN 73.33 ACRE TRACT
 VOLUME 318, PAGES 955 AND 957
 VIRGINIA MILITARY SURVEYS
 3139 AND 13593
 JEFFERSON TOWNSHIP
 LOGAN COUNTY, OHIO**

DONALD E. HONE
 61.33 ACRES
 VOL. 340, PG. 231

NOTE: THIS AREA MAY BE
 SUBJECT TO AN ADVERSE
 POSSESSION CLAIM. WE
 RECOMMEND THAT THE CLIENT
 SEEK THE ADVICE OF AN
 ATTORNEY.

JAMES A. WILLOBY
 3.55 ACRES
 O.R. 98, PG. 512
 TRACT I



ORIGINAL STAMP IN GREEN

SURVEYED BY:

[Signature]
 JEFFREY I. LEE
 PROFESSIONAL SURVEYOR 6359
 DECEMBER 24, 1996

COPYRIGHT 1996 BY:
LEE SURVEYING & MAPPING CO., INC.
 117 North Madriver Street
 BELLEFONTAINE, OHIO 43311
 (937) 593-7335

2 WORKING DAYS
BEFORE YOU DIG
 CALL TOLL FREE **800-362-2764**
 OHIO UTILITIES PROTECTION SERVICE.

INDEXED ON MAP
 2843 1P

Rec'd 12-13-05 OK JLB

Lee Surveying and Mapping Co., Inc.

Land Surveys • Topography • Subdivisions • Construction Layout

117 N. Madriver St.
Bellefontaine OH 43311



Phone: (937) 593-7335
Fax: (937) 593-7444

1975 - 2005 - 30 YEARS OF EXCELLENCE

**WACKERMAN
5.000 ACRES**

Lying in Virginia Military Surveys 3139, and 13593, Jefferson Township, Logan County, Ohio.

Being out of the George A. Wackerman and Diana M. Wackerman original 73.33 acre tract as deeded and described in Volume 318, Page 955, of the Logan County Records of Deeds and being more particularly described as follows:

Beginning at a railroad spike found at P.I. Station 71 + 84 (Logan County Engineer's Field Book 579, Pages 39-40), on the center-line of County Highway 5 (60 feet wide).

THENCE, with the center-line of County Highway 5, S 32°-42'-00"W, a distance of 209.69 feet to a railroad spike found at the TRUE POINT OF BEGINNING.

THENCE, with the center-line of County Highway 5, S 32°-42'-00"W, a distance of 380.00 feet to a MAG nail set.

THENCE, N 57°-18'-00"W, a distance of 692.06 feet to a 5/8 inch iron rod set, passing a 5/8 inch iron rod set at 30.00 feet.

THENCE, N 32°-42'-00"E, a distance of 249.43 feet to a 5/8 inch iron rod set.

THENCE, with the south lines of the Irving L. Hefner and Mary L. Hefner 71.181 acre tract (O.R. 752, Pg. 625) and Ray A. Griffin and Pam Griffin 1.06 acre tract (O.R. 699, Pg. 282), S 67°-59'-04"E, a distance of 704.27 feet to the point of beginning, passing a 5/8 inch iron rod set at 673.74 feet.

Containing 5.000 acres of which 0.260 acre is within the highway right-of-way.
0.292 acre is within Virginia Military Survey 3139
4.708 acre is within Virginia Military Survey 13593

The basis for bearings is the center-line of County Highway 5 being S 32°-42'-00"W, and all other bearings are from angles and distances measured in a field survey by Lee Surveying and Mapping Co., Inc. on December 8, 2005

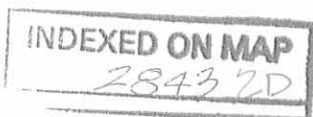
Description prepared by:



[Signature]
Jeffrey I. Lee
Professional Surveyor 6359
December 8, 2005

ORIGINAL STAMP IN GREEN

L-2488105

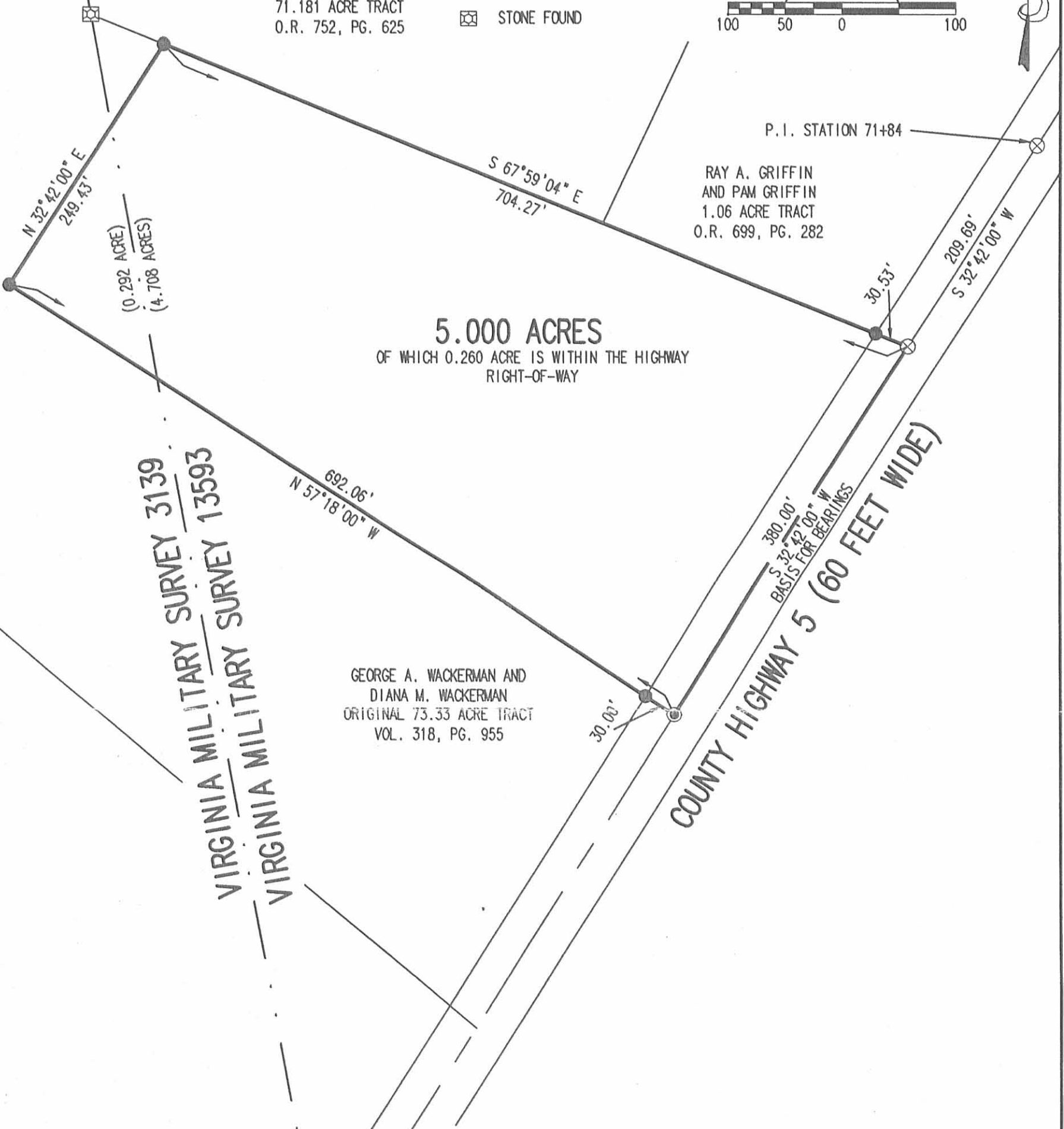
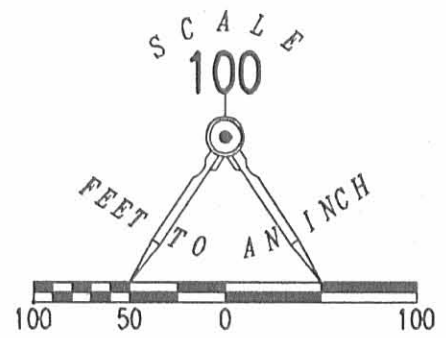


REFERENCES:
 LOGAN COUNTY ENGINEER'S
 FIELD BOOK 579, PG. 39-40

LEGEND

- 5/8 INCH IRON ROD SET
- ⊙ MAG NAIL SET
- ⊗ RAILROAD SPIKE FOUND
- ⊠ STONE FOUND

IRVING L. HEFNER
 AND MARY L. HEFNER
 71.181 ACRE TRACT
 O.R. 752, PG. 625



P.I. STATION 71+84

RAY A. GRIFFIN
 AND PAM GRIFFIN
 1.06 ACRE TRACT
 O.R. 699, PG. 282

5.000 ACRES
 OF WHICH 0.260 ACRE IS WITHIN THE HIGHWAY
 RIGHT-OF-WAY

VIRGINIA MILITARY SURVEY 3139
 VIRGINIA MILITARY SURVEY 13593

GEORGE A. WACKERMAN AND
 DIANA M. WACKERMAN
 ORIGINAL 73.33 ACRE TRACT
 VOL. 318, PG. 955

A SURVEY OF A 5.000 ACRE TRACT OUT OF THE
 GEORGE A. WACKERMAN AND DIANA M. WACKERMAN
 ORIGINAL 73.33 ACRE TRACT
 VOLUME 318, PAGE 955
 VIRGINIA MILITARY SURVEYS 3139 AND 13593
 JEFFERSON TOWNSHIP
 LOGAN COUNTY, OHIO

SURVEYED BY:



JEFFREY I. LEE
 PROFESSIONAL SURVEYOR 6359
 DECEMBER 8, 2005

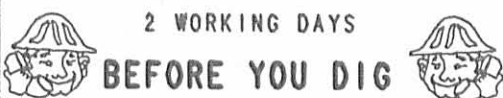
COPYRIGHT 2005 BY:
 LEE SURVEYING & MAPPING CO., INC.
 117 North Madriver Street
 BELLEFONTAINE, OHIO 43311
 (937) 593-7335

ORIGINAL STAMP IN GREEN

ADW D1205 2488105 L-2488105-3

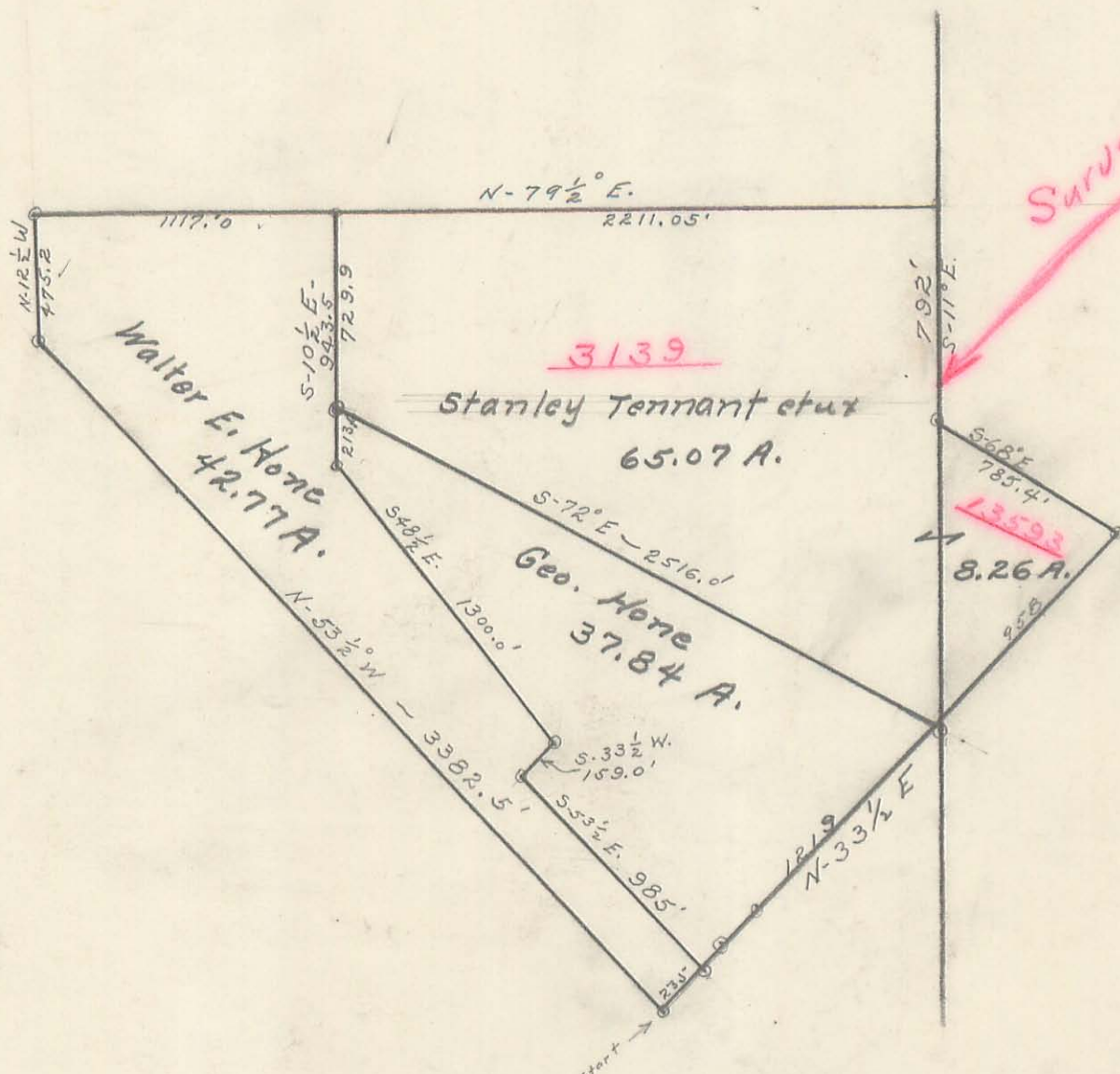
INDEXED ON MAP

2843 28



CALL TOLL FREE 800-362-2764

OHIO UTILITIES PROTECTION SERVICE



Jefferson Trwp.
 Surveyed By Walter V. Scott
 10 Chs = 1 inch

2843 3P

1755

Walter Hone Description #1

Being situated in Jefferson Township, Logan County,
Ohio and being a part of V.M.S. No. 3139.

Beginning at a point in the center of C. H. #5
that is known as Sta. 45+63 as shown in the County Engineer's
F.B. 559 page 43. Thence N. 52° - 48' W. 2208.0 feet to an
iron fence post; N. 46° - 49' E. 388.0 feet to an iron fence
post; Thence S. 52° - 04' E. 1139.0 feet to an iron fence post;
Thence S. 51° - 19' E. 980.5 feet to the center of C. H. #5;
Thence S. 33° - 08' W. 343.0 feet with the center of C. H. #5
to the place of beginning.

Containing 19.28 acres more or less.

INDEXED ON MAP
2043 HD-1

Walter Hone Description #2

Being situated in Jefferson Township, Logan County,
Ohio, and being a part of V.M.S. #3139.

Beginning at a point in the center of C.H. #5
known as station 50+86 in the Logan County Engineer's F.B.
#559 page 43. Thence with C.H. #5 S. 33° - 08' W. 180.0 feet
to a point; Thence N. 51° - 19' W. 980.5 feet to an iron fence
post; Thence N. 52° - 04' W. 1139.0 feet to an iron fence post;
Thence S. 46° - 49' W. 388.0 feet to an iron fence post; Thence
N. 52° - 48' W. 1174.5 feet to a corner fence post; Thence
N. 4° - 41' W. 475.0 feet to a corner fence post; Thence N. 83° -
39' E. 1117.0 feet to a corner fence post; Thence S. 1° - 14' E.
730.5 feet to a corner fence post; Thence S. 73° - 46' E. 2516.0
feet to the center of C.H. #5; Thence with the center of C.H. #5
S. 34° - 08' W. 931.0 feet to the place of beginning.

Containing 61.33 acres more or less.

