

The following described land in Jefferson Township, Logan County, Ohio and being 16.90 acres in V.M.S. 3436 and 10.54 acres in V.M.S. 2674

Beginning at an iron in the center of County Road Number 2 known as the Zanesfield North Greenfield Pike at the east side of V.M.S. 2674 and also being at the S.W. corner of J. Nichols 3.10 acre tract thence with the east side of said V.M.S. 2674 and also with the west side of said 3.10 acre tract and also with the west side of Maggie E. Cronkleton's 17.00 acre tract N. 5 - 19 W. 730.5 feet to a post in the South line of V.M.S. 3436 and at the N.W. corner of said 17.00 acre tract the last described line passing the N.W. corner of the 3.10 acre tract at 335.5 feet thence with the south line of V.M.S. 3436 and with the north line of said Cronkleton 17.00 acre tract N. 83 - 00 E. 646.0 feet to a post at the S.W. corner of Maggie E. Cronkleton's 20.00 acre tract thence with the west side of said 20.00 acre tract N. 6 - 00 W. 746.0 feet to a post in the south line of Howard Elliott's 252.01 acre tract thence with the south line of said Elliott land S. 83 - 35 W. 987.0 feet to an iron thence S. 2 - 10 E. 1043.0 feet to an iron at the N.E. corner of a square wood post thence with the present fence line S. 69 - 05 W. 293.5 feet to a wood post thence again with the present fence line S. 20 - 55 E. 546.5 feet to an iron in the center of said Road Number 2 and said iron being station 156 plus 67 as shown in Logan County Engineer's survey Book 579 page 58 thence with the center of County Road Number 2 N. 67 - 00 E. 260.0 feet to an iron mid way between two concrete right of way posts thence again with the center of County Road Number 2 N. 68 - 04 E. 307.0 feet to the place of beginning said tract containing a total of 27.44 acres 10.40 acres to be transferred from the present 15.99 acre tract in sub 6 in V.M.S. 3436 6.50 acres to be transferred from the present 10.00 acre tract in sub 8 in V.M.S. 3436 and 10.54 acres to be transferred from the present 26.96 acres in sub 5 in V.M.S. 2674

cc  
Logan County Engineer

on Plat Book

ID

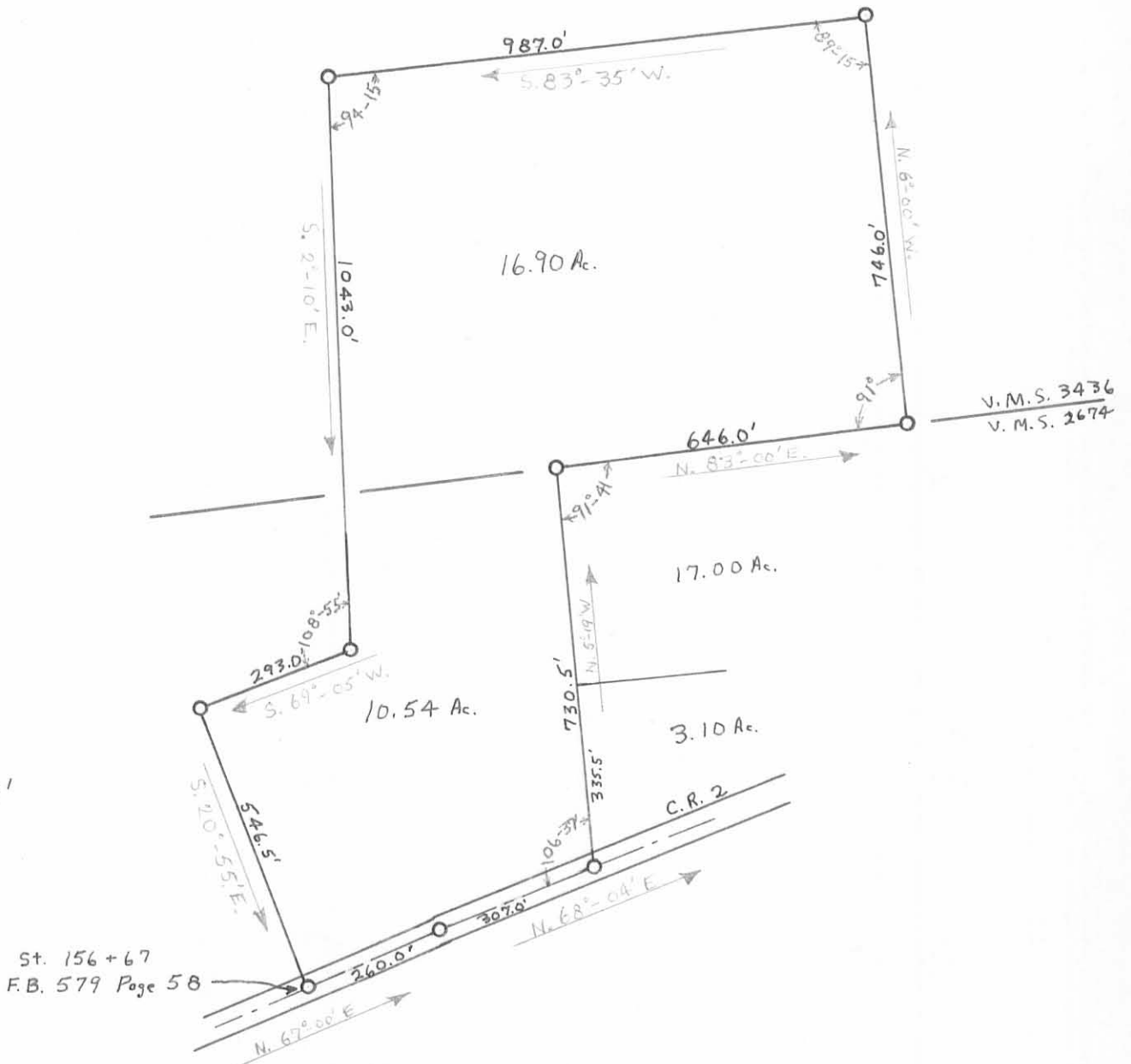
2849

# BREWER SURVEY JEFFERSON TWP.

V.M.S. 3436 & 2674



SCALE: 1" = 300'



INDEXED ON MAP  
2049 IP

SURVEYED BY F.F. WRIGHT - 1959

DRAWN BY T. L. MADDEN - 1963