

Lee Surveying and Mapping Co., Inc.

Land Surveys • Topography • Subdivisions • Construction Layout

117 N. Madriver St.
Bellefontaine OH 43311



Phone: (937) 593-7335
Fax: (937) 593-7444

ZANESFIELD ROD AND GUN CLUB INC. 125.082 ACRE TRACT

Lying in Virginia Military Survey 3137, Jefferson Township, Logan County, Ohio

Being out of the Zanesfield Rod and Gun Club, Inc., 182.810 acre tract as deeded and described in Official Record 704, Page 966 Tract I of the Logan County Records of Deeds and being more particularly described as follows:

Beginning at a 5/8 inch iron rod found at the southeast corner of Virginia Military Survey 3137.

THENCE, with the south line of Virginia Military Survey 3137 the following two courses:

With the north line of the Donald L. Van Hying 51.16 acre tract (O.R. 161, Pg. 204 Tract III), N 70°-35'-06" W, a distance of 1428.30 feet to a 5/8 inch iron rod found.

With the north line of the Michael L. Berry 60.69 acre tract (O.R. 215, Pg. 343), N 70°-10'-10" W, a distance of 1999.80 feet to a 3' tapered square concrete post with a metal bar found in top.

THENCE, with the east line of the Zanesfield Rod and Gun Club, Inc. original 8.52 acre tract (Vol. 302, Pg. 381 and Vol. 299, Pg. 124, Tract. 8), N 17°-43'-23" E, a distance of 971.03 feet to a 5/8 inch iron rod found, passing a 5/8 inch iron rod found at 817.92 feet.

THENCE, with the said 8.52 acre tract and the Zanesfield Rod and Gun Club, Inc. 0.52 acre tract (Vol. 302, Page 381, Tract 15), S 72°-52'-34"E, a distance of 46.00 feet to a 5/8 inch iron rod found.

THENCE, with the east line of the said 0.52 acre tract, N 17°-43'-23" E, a distance of 193.77 feet to a 5/8 inch iron rod found.

THENCE, with the north right-of-way of U.S. 33, S 37°-24'-00"E, a distance of 352.22 feet to a 5/8 inch iron rod found.

THENCE, with the north right-of-way of U.S. 33, with a curve to the left having a central angle of 9°-15'-44", a radius of 4443.35 feet, an arc length of 718.30 feet, a chord bearing S 51°-58'-54"E, a distance of 717.52 feet to a 5/8 inch iron rod set.

THENCE, N 47°-47'-55"E, a distance of 621.16 feet to a 5/8 inch iron rod set.

THENCE, N 30°-05'-30"E, a distance of 353.80 feet to a 5/8 inch iron rod set.

THENCE, N 70°-31'-26"W, a distance of 72.29 feet to a 5/8 inch iron rod set.

Lee Surveying and Mapping Co., Inc.

Land Surveys • Topography • Subdivisions • Construction Layout

117 N. Madriver St.
Bellefontaine OH 43311



Phone: (937) 593-7335
Fax: (937) 593-7444

THENCE, N 27°-32'-55"E, a distance of 502.71 feet to a 5/8 inch iron rod set.

THENCE, N 24°-45'-23"E, a distance of 416.13 feet to a 5/8 inch iron rod set.

THENCE, N 23°-48'-40"E, a distance of 703.06 feet to a MAG nail set, passing a 5/8 inch iron rod set at 672.20 feet.

THENCE, with the center-line of County Road 153 (60 feet wide), S 52°-37'-36"E, a distance 171.20 feet to a MAG nail found.

THENCE, with the west line of the Meredith S. Coder 2.808 acre tract (O.R. 671, Pg. 69) and the Board of Trustees of Jefferson Township 1.002 acre tract (O.R. 715, Pg. 24) and the Zanesfield Rod and Gun Club Inc. 0.051 acre tract (O.R. 704, Pg.966 Tract II), S 29°-20'-40" W, a distance of 666.05 feet to a point, passing a 5/8 inch iron rod found at 30.30 feet and a 5/8 inch iron rod found at 640.52 feet.

THENCE, with the southerly lines of the said 0.051 acre tract, the south line of the Trustees of Jefferson Township 0.741 acre tract (O.R. 713, Pg. 700), with a curve to the right having a central angle of 24°-54'-53", an arc length of 704.49 feet, a radius of 1620.11 feet and a chord bearing S 43°-19'-52" E, a distance of 698.95 feet to a 5/8 inch iron rod found.

THENCE, continuing with the south line of the said 0.741 acre tract, and the David Scott Elson 0.526 acre tract (O.R. 704, Pg. 989), S 28°-15'-07" E, a distance of 538.56 feet to a 5/8 inch iron rod found.

THENCE, with the east line of the said 0.526 acre tract, N 44°-33'-31" E, a distance of 55.25 feet to a 5/8 inch iron rod found.

THENCE, with the southwesterly line of the Gary D. Young original 10.550 acre tract (O.R. 171, Pg. 205), S 32°-15'-35" E, a distance of 893.45 feet to a 5/8 inch iron rod found.

THENCE, with the southwesterly line of the Scott Armentrout 1.000 acre tract (O.R. 187, Pg. 207), S 39°-33'-54" E, a distance of 278.61 feet to a 3/4 inch iron rod found.

THENCE, with the east line of Virginia Military Survey 3137 and the west line of the Thomas L. Wiley 13.344 acre tract (O.R., 403, Pg. 894), S 21°-20'-30" W, a distance of 520.47 feet to a 3/4 inch iron rod found.

THENCE, with the lines of the State of Ohio 3.226 acre tract (O.R. 254, Pg. 95) the following six courses:

N 75°-08'-40" W, a distance of 116.56 feet to a 3/4 inch iron rod found.

Lee Surveying and Mapping Co., Inc.

Land Surveys • Topography • Subdivisions • Construction Layout

117 N. Madriver St.
Bellefontaine OH 43311



Phone: (937) 593-7335
Fax: (937) 593-7444

N 73°-24'-24" W, a distance of 500.41 feet to a 3/4 inch iron rod found.

S 14°-48'-11" W, a distance of 13.19 feet to a 5/8 inch iron rod found.

S 16°-36'-46" W, a distance of 216.65 feet to a 3/4 inch iron rod found.

S 73°-22'-38" E, a distance of 400.15 feet to a 5/8 inch iron rod found.

S 71°-03'-10" E, a distance of 196.52 feet to a 5/8 inch iron rod found.

THENCE, with the east line of Virginia Military Survey 3137 and the west lines of the State of Ohio 0.047 acre tract (O.R. 211, Pg. 201) and the Donald L. Van Hying 77.3 acre tract (O.R. 161, Pg. 204 Tract I), S 21°-20'-30" W, a distance of 464.66 feet to the point of beginning.

Containing 125.082 acres of which 16.409 acres are in the highways rights-of-way.

The basis for bearings is the south line of Virginia Military Survey 3137 being N 70°-10'-10" W, and all other bearings are from angles and distances measured in a field survey by Lee Surveying & Mapping Co., Inc. on December 19, 2003 and June 3, 2004



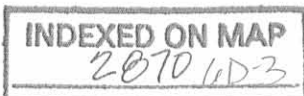
ORIGINAL STAMP IN GREEN

Description prepared by:

A handwritten signature in black ink, appearing to read 'Jeffrey I. Lee', written over the typed name and date.

Jeffrey I. Lee
Professional Surveyor 6359
June 7, 2004

3712034A



REC'D 6-17-04 SUM ALL

Lee Surveying and Mapping Co., Inc.

Land Surveys • Topography • Subdivisions • Construction Layout

117 N. Madriver St.
Bellefontaine OH 43311



Phone: (937) 593-7335
Fax: (937) 593-7444

ZANESFIELD ROD AND GUN CLUB INC., 57.728 ACRE TRACT

Lying in Virginia Military Survey 3137, Jefferson Township, Logan County, Ohio

Being out of the Zanesfield Rod and Gun Club, Inc., 182.810 acre tract as deeded and described in Official Record 704, Page 966 Tract I of the Logan County Records of Deeds and being more particularly described as follows:

Beginning at a railroad spike found on the center-line of County Highway 153 (60 feet wide), and at the northeast corner of the Zanesfield Rod and Gun Club 9.051 acre tract (Vol. 407, Pg. 789).

THENCE, with the center line of County Highway 153, S 52°-37'-36"E, a distance of 675.80 feet to a MAG nail set.

THENCE, S 23°-48'-40"W a distance of 703.06 feet to a 5/8 inch iron rod set, passing a 5/8 inch iron rod set at 30.86 feet.

THENCE, S 24°-45'-23"W, a distance of 416.13 feet to a 5/8 inch iron rod set.

THENCE, S 27°-32'-55"W, a distance of 502.71 feet to a 5/8 inch iron rod set.

THENCE, S 70°-31'-26"E, a distance of 72.29 feet to a 5/8 inch iron rod set.

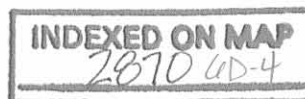
THENCE, S 30°-05'-30"W, a distance of 353.80 feet to a 5/8 inch iron rod set.

THENCE, S 47°-47'-55"W, a distance of 621.16 feet to a 5/8 inch iron rod set.

THENCE, with the north right-of-way of U.S. Highway 33 with a curve to the right having a central angle of 9°-15'-44", a radius of 4443.35 feet, an arc length of 718.30 feet, a chord bearing N 51°-58'-54"W, a distance of 717.52 feet to a 5/8 inch iron rod found.

THENCE, with the north right-of-way of U.S. Highway 33 N 37°-24'-00"W, a distance of 352.22 feet to a 5/8 inch iron rod found.

THENCE, with the Zanesfield Rod and Gun Club, Inc. 0.52 acre tract (Vol. 302, Page 381, Tract 15), N 17°-43'-23" E, a distance of 802.54 feet to a 5/8 inch iron rod found.



Lee Surveying and Mapping Co., Inc.

Land Surveys • Topography • Subdivisions • Construction Layout

117 N. Madriver St.
Bellefontaine OH 43311



Phone: (937) 593-7335
Fax: (937) 593-7444

THENCE, with the southerly lines of the Zanesfield Rod and Gun Club, Inc. original 6.2 acre tract (Vol. 163, Pg. 582 first parcel) and the said 9.051 acre tract with a curve to the right having a central angle of $28^{\circ}-51'-43''$, a radius of 1470.11 feet, an arc distance of 740.54 feet, and having a chord bearing $N 76^{\circ}-16'-44'' E$, a distance of 732.74 feet to a 5/8 inch iron rod found.

THENCE, with the east lines of the said 9.051 acre tract the following three courses:

$N 18^{\circ}-37'-51'' E$, a distance of 236.76 feet to a 5/8 inch iron rod found.

$N 28^{\circ}-11'-38'' E$, a distance of 54.50 feet to a 1 inch iron pipe found.

$N 32^{\circ}-43'-00'' E$, a distance of 822.62 feet to the point of beginning, passing a 5/8 inch iron rod found at 792.52 feet.

Containing 57.728 acres of which 0.474 acre is in the highway right-of-way.

The basis for bearings is the south line of Virginia Military Survey 3137 being $N 70^{\circ}-10'-10'' W$, and all other bearings are from angles and distances measured in a field survey by Lee Surveying & Mapping Co., Inc. on December 19, 2003 and June 3, 2004.



ORIGINAL STAMP IN GREEN

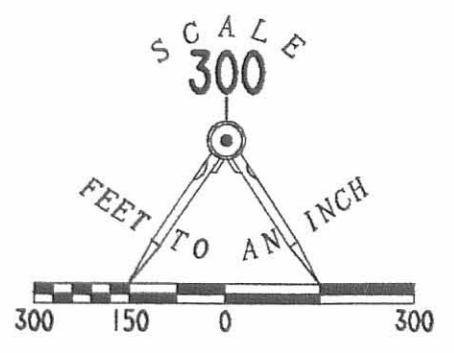
Description prepared by:

A handwritten signature in black ink, appearing to read 'J. Lee', written over the typed name and title.

Jeffrey I. Lee
Professional Surveyor 6359
June 4, 2004

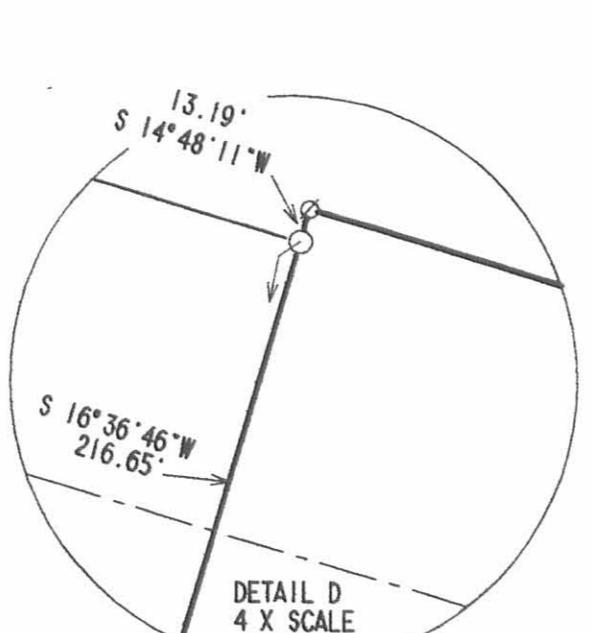
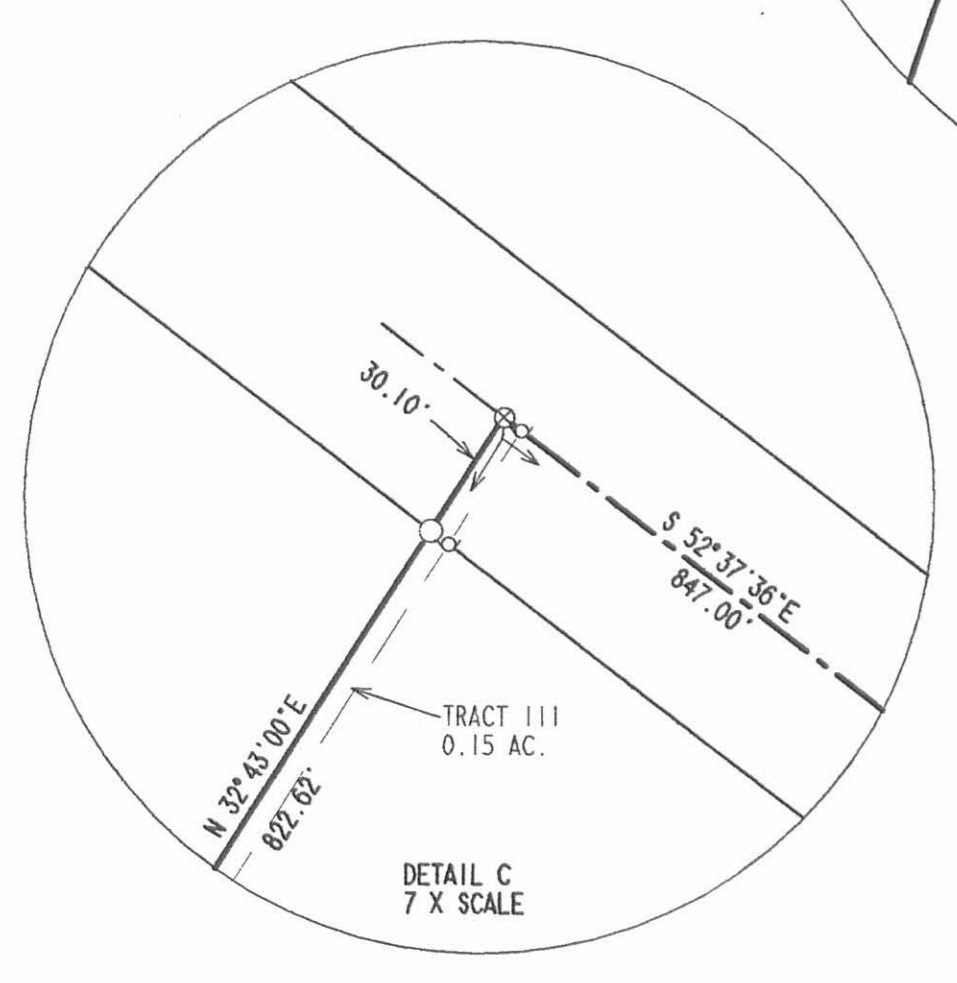
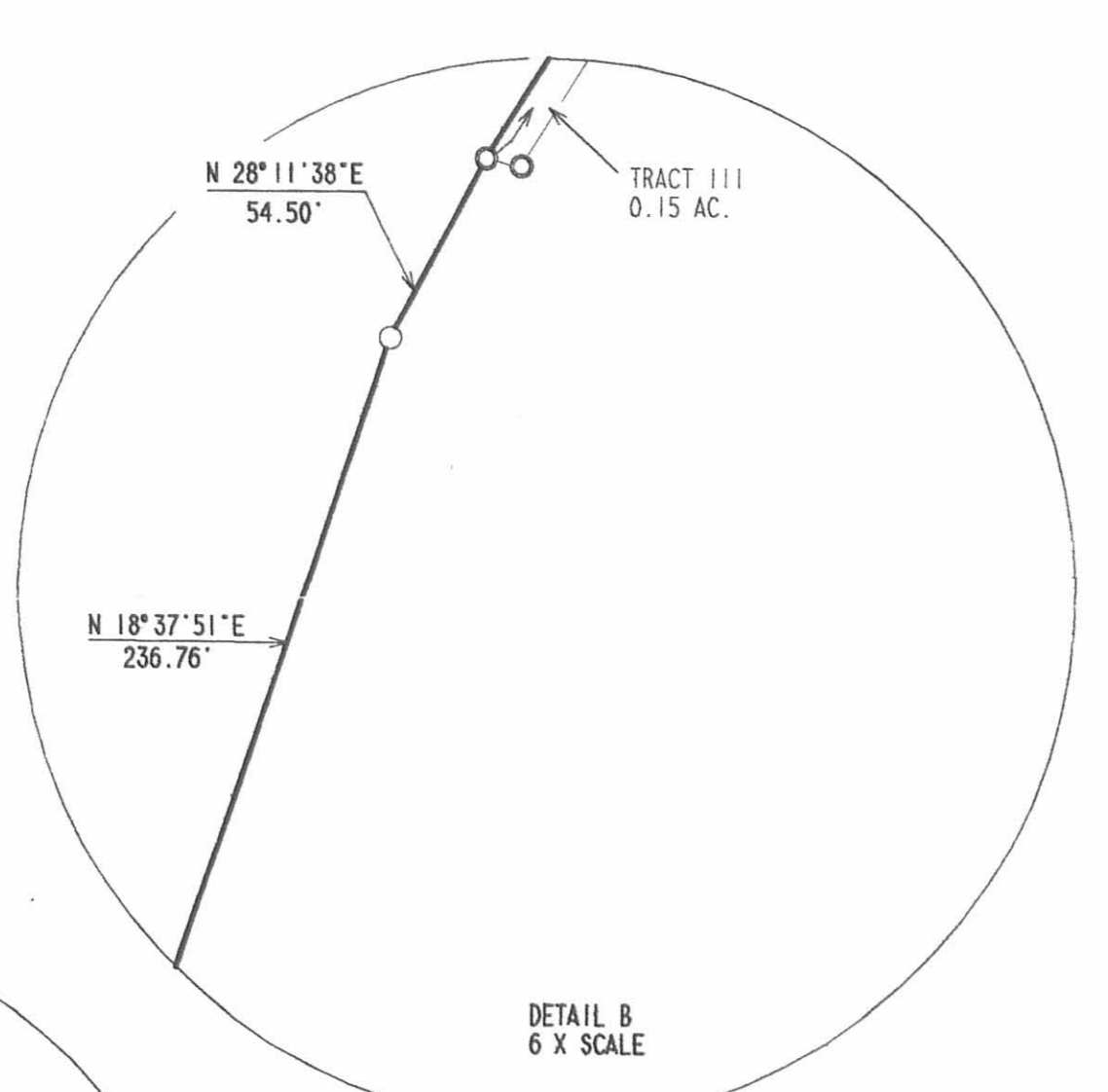
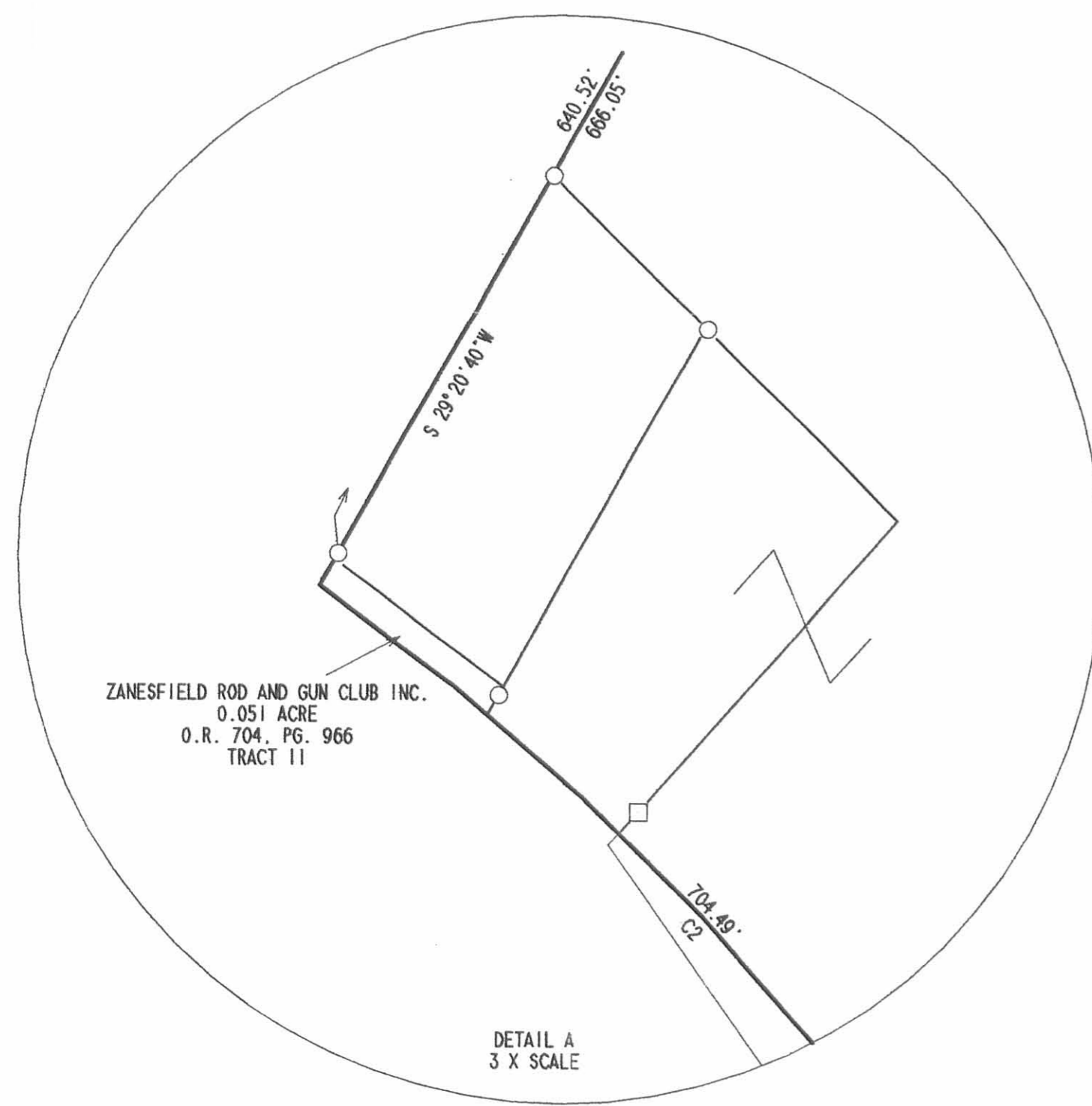
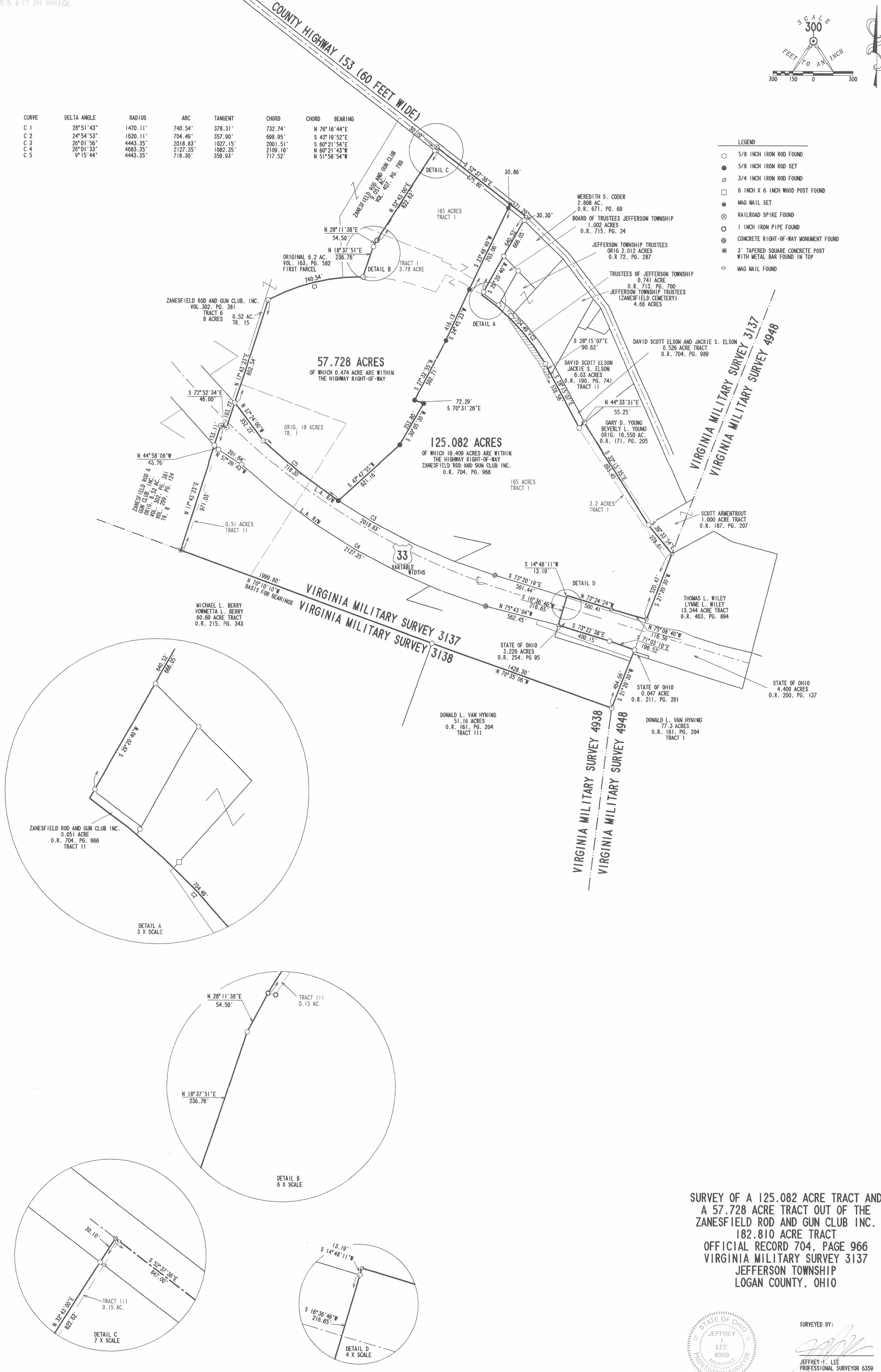
3712034A





CURVE	DELTA ANGLE	RADIUS	ARC	TANGENT	CHORD	CHORD BEARING
C 1	28° 51' 43"	1470.11'	740.54'	378.31'	732.74'	N 76° 16' 44" E
C 2	24° 54' 53"	1620.11'	704.49'	357.90'	698.95'	S 43° 19' 52" E
C 3	26° 01' 56"	4443.35'	2018.83'	1027.15'	2001.51'	S 60° 21' 54" E
C 4	26° 01' 33"	4683.35'	2127.35'	1082.35'	2109.10'	N 60° 21' 43" W
C 5	9° 15' 44"	4443.35'	718.30'	359.93'	717.52'	N 51° 58' 54" W

- LEGEND
- 5/8 INCH IRON ROD FOUND
 - 5/8 INCH IRON ROD SET
 - 3/4 INCH IRON ROD FOUND
 - 6 INCH X 6 INCH WOOD POST FOUND
 - MAG NAIL SET
 - RAILROAD SPIKE FOUND
 - 1 INCH IRON PIPE FOUND
 - ⊗ CONCRETE RIGHT-OF-WAY MONUMENT FOUND
 - ⊞ 3' TAPERED SQUARE CONCRETE POST WITH METAL BAR FOUND IN TOP
 - ◇ MAG NAIL FOUND



SURVEY OF A 125.082 ACRE TRACT AND
A 57.728 ACRE TRACT OUT OF THE
ZANESFIELD ROD AND GUN CLUB INC.
182.810 ACRE TRACT
OFFICIAL RECORD 704, PAGE 966
VIRGINIA MILITARY SURVEY 3137
JEFFERSON TOWNSHIP
LOGAN COUNTY, OHIO



SURVEYED BY:
Jeffrey L. Lee
JEFFREY L. LEE
PROFESSIONAL SURVEYOR 6359
JUNE 3, 2004

2 WORKING DAYS
BEFORE YOU DIG
CALL TOLL FREE 800-362-2764
OHIO UTILITIES PROTECTION SERVICE

INDEXED ON MAP
2010 UP

COPYRIGHT 2004 BY:
LEE SURVEYING & MAPPING CO., INC.
117 North Medifer Street
BELLEFONTAINE, OHIO 43311
(937) 593-7335

Cushman - Black Survey Jefferson Township Feb. 1958 0.51 Acre
(Cushman to Black 0.51 Acre)

The following described land in Jefferson Township, Logan County Ohio
and being in V.M.S. 3137.
Being 0.51 of one acre off of the East side of Edna M. Cushman's present
8.52 acre tract the said 0.51 acre tract being more fully described as
follows:

Beginning in the center of an open ditch known as Spring Branch in the
south line of V.M.S. 3137 and ~~176/16/116/~~ also being the S.W. corner of
Curtis Black's 173.12 acre tract and the S.E. corner of Edna M Cushman's
present ~~8.25~~^{8.52} acre tract and also being in the north line of a lane
leading to Hazel Holland's 58.00 acre tract thence with the west side of
said Black land and with the center of said Spring Branch N. 19 - 28 E.
972.1 feet thence N. 70 - 32 W. 23.0 feet to an iron pipe thence
S. 19 - 28 W. 973.1 feet to an iron pipe in the north line of said
lane and in the south line of V.M.S. 3137 thence with the north side of
said lane and with the ~~176/~~ south side of V.M.S. 3137 S. 68 - 00 E.
23.0 feet to the place of beginning said tract containing 0.51 of one
acre.

cc
Logan County Engineer.

on Plat Book

2870 7D-1

INDEXED ON MAP

(Black to Cushman 0.52 Acre)

The following described land in Jefferson Township, Logan County, Ohio, and being in V.M.S. 3137 Being 0.52 of one acre off of the west side of Curtis Black's present 173.12 acre tract the 0.52 acre tract being more fully described as follows:

Beginnin in the center of an open ditch known as Spring Branch in the south line of V.M.S. 3137 and also being in the S.W. corner of Curtis Black's 173.12 acre tract and the S.E. corner of Edna M. Cushman's present ~~8.52~~ ^{0.52} acre tract and also being in the north line of lane leading to Hazel Holland's 58.00 acre tract thence with the west ~~side~~ side of said Black's land and with the center of said Spring Branch N. 19 - 28 E. 972.1 feet for the beginning point of this survey thence again with the center of said Spring Branch N. 19 - 28 E. 976.3 feet thence with the south side of what was the T.&O.C. right of way N. 68 - 28 E. 30.5 feet to an iron pipe in the present fence line thence S. 19 - 28 W. 996.3 feet to an iron pipe the last described line being 23.0 feet east of and parallel with the ~~first described line~~ ^{center of said Spring Branch} thence N. 70 - 32 W. 23.0 feet to the place of beginning said tract containing 0.52 of one acre.

cc
Logan County Engineer

on Plat Book

2870 7D-2

INDEXED ON MAP