

C.H. No. 25
JEFFERSON TWP.

FB 702

PT 13+77.02 R/W. mon. set 50' R/W

11+99.10 3/4" pipe set - P.I. Angle 5°-20 1/2 Lt.

A = 5°-20 1/2
D = 1°-30'
R = 3819.83
T = 178.20
L = 356.12

PC 10+20.90

9+90 R/W mon.
set at 60' and 50' R/Ws. at R₁₂ to E

5+00 R/W mon. set 60' R/W 16 Aug 66

2+89.95 P.O.T. R.R. spk. set

1+00 R/W mon. set 60' R/W Lt. mon. below surface 16 Aug 66

0+25.3 N. R/W Fence - East

0+00 Copd. nail set @ E of pavement - S.R. #47

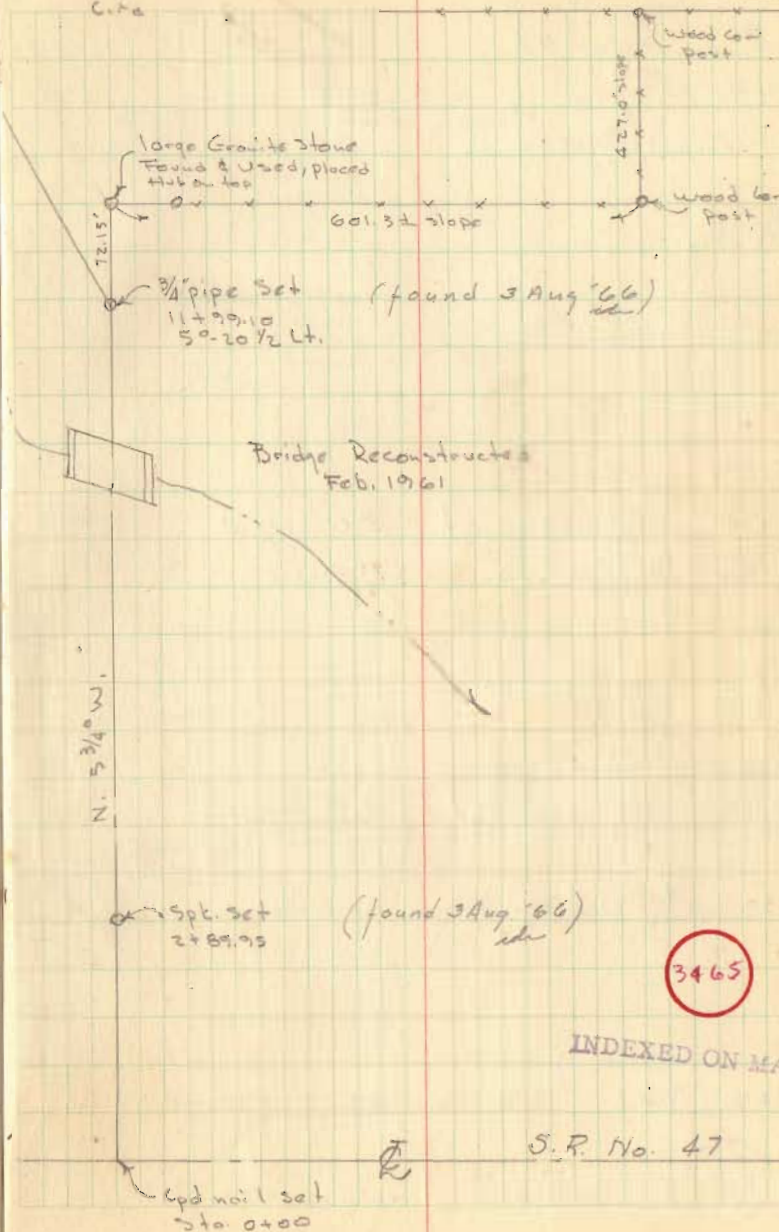
C.H. No.

25

Dodson
Gilbert
Tavis
Cite

4-7-60

37



FB 702

C.H. No. 25 (CONT'D)

27+34.9 1/2" ϕ Bar Found

25+00 R/W mans. set. 50' R/W

24+73.0 1/2" ϕ Bar Found - No Angle

20+00 R/W mans. set. 50' R/W

19+39.1 1/2" ϕ Iron Bar Found - No Angle

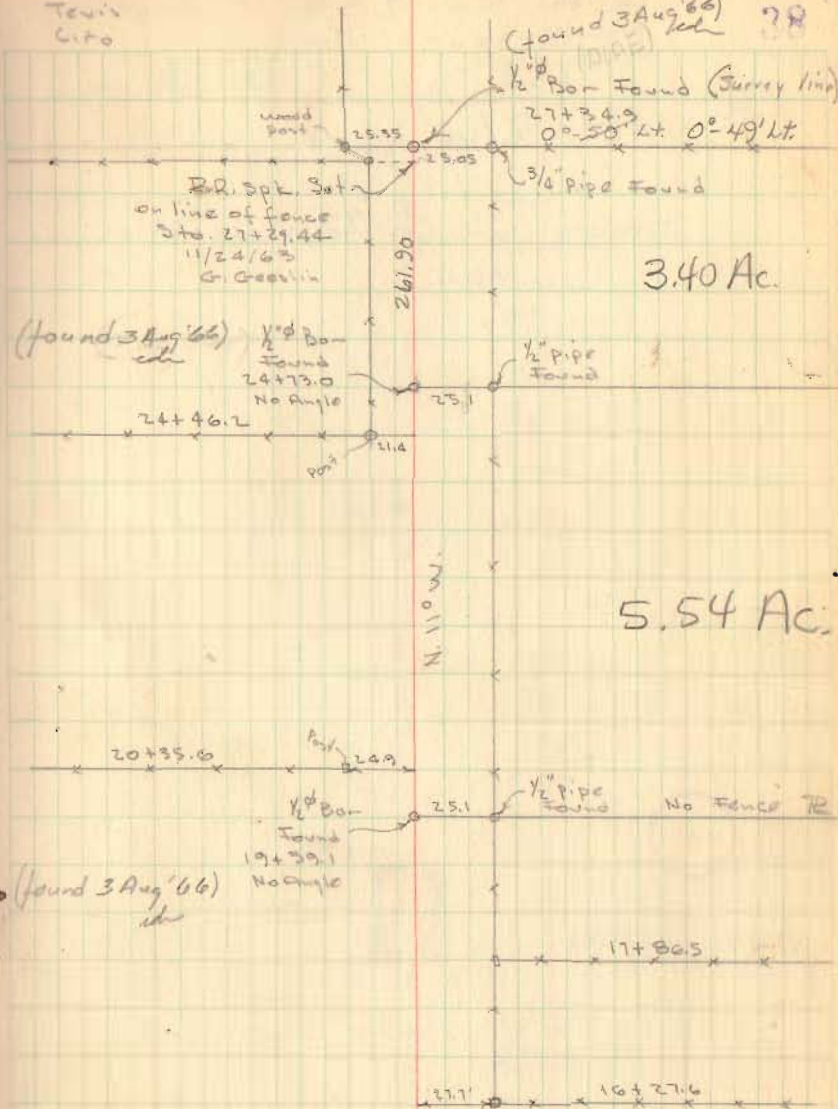
15+27.3 P.O.T. R.R. spk set. (found 3 Aug '66)
sch

15+00 R/W mans. set L'i. only 50' R/W

Gilbert
Tevie
Cito

4-12-60

(found 3 Aug '66)
sch 78



3.40 Ac.

5.54 Ac.

3465

INDEXED ON MAP