

REC'D 1-10-97 SMY OK ✓



# Lee Surveying and Mapping Co., Inc.



Farm Surveys • Lot Surveys • Topography • Subdivisions • Construction Layout

117 NORTH MADRIVER STREET  
BELLEFONTAINE, OHIO 43311

(937) 593-7335  
FAX (937) 593-7444

## TERRY E. VOSS 2.796 ACRES

Lying in Virginia Military Surveys 3220 and 4477, Jefferson Township, Logan County, Ohio.

Being all of the Terry E. Voss original 2.79 acre tract as deeded and described in Official Record 290, Page 46 of the Logan County Records of Deeds and being more particularly described as follows:

Beginning at a stone found in a monument box at the northeast corner of Virginia Military Survey 4477, on the intersection of the south line of Virginia Military Survey 3220 and the center-line of County Highway 55.

THENCE, with the east line of Virginia Military Survey 4477 and the center-line of County Highway 55 (60 feet wide), S 7°-30'-40" W, a distance of 259.96 feet to a railroad spike found.

THENCE, with the north line of the Mary Maxine Albert 1.15 acre tract (Vol. 408, Pg. 817), N 82°-42'-43" W, a distance of 252.87 feet to a 5/8 inch iron rod set.

THENCE, with the east line of the Carriage Hill Allotment No. 1 (Plat Cabinet A, Slide 403) and the east line of the Randall J. Dodds 0.92 acre tract (O.R. 76, Pg. 200), 0.322 acre tract (O.R. 76, Pg. 200), and 2.659 acre tract (O.R. 85, Pg. 470), N 7°-12'-55" E, a distance of 478.32 feet to a 5/8 inch iron rod set.

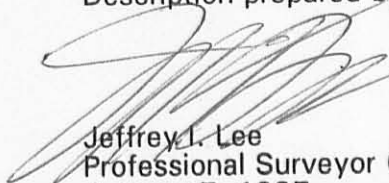
THENCE, with the south line of the Board of Trustees of Jefferson Township 1.00 acre tract (Vol. 375, Pg. 438), S 83°-14'-15" E, a distance of 254.92 feet to a railroad spike set.

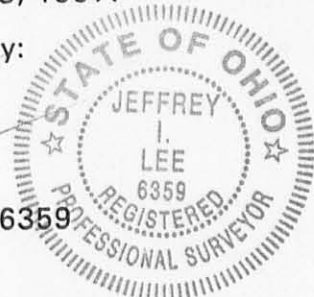
THENCE, with the center-line of County Highway 55, S 7°-23'-45" W, a distance of 220.70 feet to the point of beginning.

Containing 2.796 acres of which 0.331 acre is within the highway right-of-way. 1.290 acres are in Virginia Military Survey 3220 and 1.506 acres are in Virginia Military Survey 4477.

The basis for bearings is the center-line of County Highway 55 in Virginia Military Survey 3220 being S 7°-23'-45" W, and all other bearings are from angles and distances measured in a field survey by Lee Surveying and Mapping Co., Inc. on January 3, 1997.

Description prepared by:

  
Jeffrey I. Lee  
Professional Surveyor 6359  
January 7, 1997



L 893

ORIGINAL STAMP IN GREEN

INDEXED ON MAP  
3728 1D

BOARD OF TRUSTEES OF JEFFERSON TOWNSHIP  
1.00 ACRE  
VOL. 375. PG. 438

RANDALL J. DODDS  
2.659 ACRES  
O.R. 85. PG. 470

RANDALL J. DODDS  
0.322 AC.  
O.R. 76. PG. 200

RANDALL J. DODDS  
0.92 AC.  
O.R. 76. PG. 200

TERRY E. VOSS  
O.R. 290. PG. 46

V.M.S. 3220  
V.M.S. 4477

LOT 9

CARRIAGE HILL  
ALLOTMENT NO. 1  
PLAT CABINET A. SLIDE 403

LOT 8

LOT 7

MARY MAXINE ALBERT  
1.15 ACRES  
VOL. 408. PG. 817

2.796 ACRES  
OF WHICH 0.331 ACRE IS WITHIN  
HIGHWAY RIGHT-OF-WAY

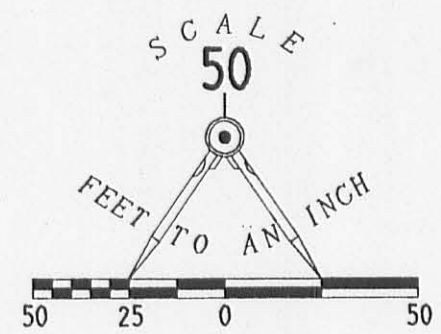
COUNTY HIGHWAY 55 (60')

MOUNT CREST DRIVE



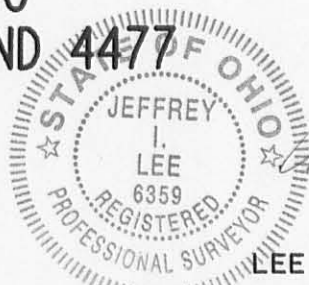
LEGEND

- 5/8" IRON ROD SET
- ⊕ RAILROAD SPIKE SET
- ⊗ RAILROAD SPIKE FOUND
- 3/4" IRON ROD FOUND
- ⊠ STONE FOUND IN MONUMENT BOX



RETRACEMENT SURVEY OF THE TERRY E. VOSS  
ORIGINAL 2.79 ACRES (2.796 ACRES BY THIS SURVEY)  
OFFICIAL RECORD 290, PAGE 46  
VIRGINIA MILITARY SURVEYS 3220 AND 4477  
JEFFERSON TOWNSHIP  
LOGAN COUNTY, OHIO

SURVEYED BY:  
  
JEFFREY I. LEE  
PROFESSIONAL SURVEYOR 6359  
JANUARY 3, 1997



ORIGINAL STAMP IN GREEN

COPYRIGHT 1997 BY:  
LEE SURVEYING & MAPPING CO., INC.  
117 North Madriver Street  
BELLEFONTAINE, OHIO 43311  
(937) 593-7335

2 WORKING DAYS  
**BEFORE YOU DIG**  
CALL TOLL FREE **800-362-2764**  
OHIO UTILITIES PROTECTION SERVICE.

INDEXED ON MAP  
3728 1P

Kearfoot - Lovett Survey Jefferson Township 0.47 Acre Oct 1964

The following described land in Jefferson Township, Logan County, Ohio, and being in V.M.S. 3320.

Beginning at an iron at the N.W. corner of Lot Number 9 of Carriage Hill Allotment and in the south line of V.M.S. 3320. Thence with the north side of said Lot Number 9 S.  $85^{\circ} - 25'$  E. 353.50 feet to a round wood post at the N.E. corner of said Lot Number 9.

Thence with the west side of Earl Voss tract N.  $4^{\circ} - 55'$  E. 60.00 feet to an iron.

Thence N.  $85^{\circ} - 25'$  W. 334.00 feet to an iron.

Thence S.  $22^{\circ} - 33'$  W. 63.10 feet to the place of beginning.

The above described tract contains 0.47 of one acre and is out of the S.E. corner of a 107.73 acre tract in the name of Robert J. Lovett.

cc  
Logan County Engineer

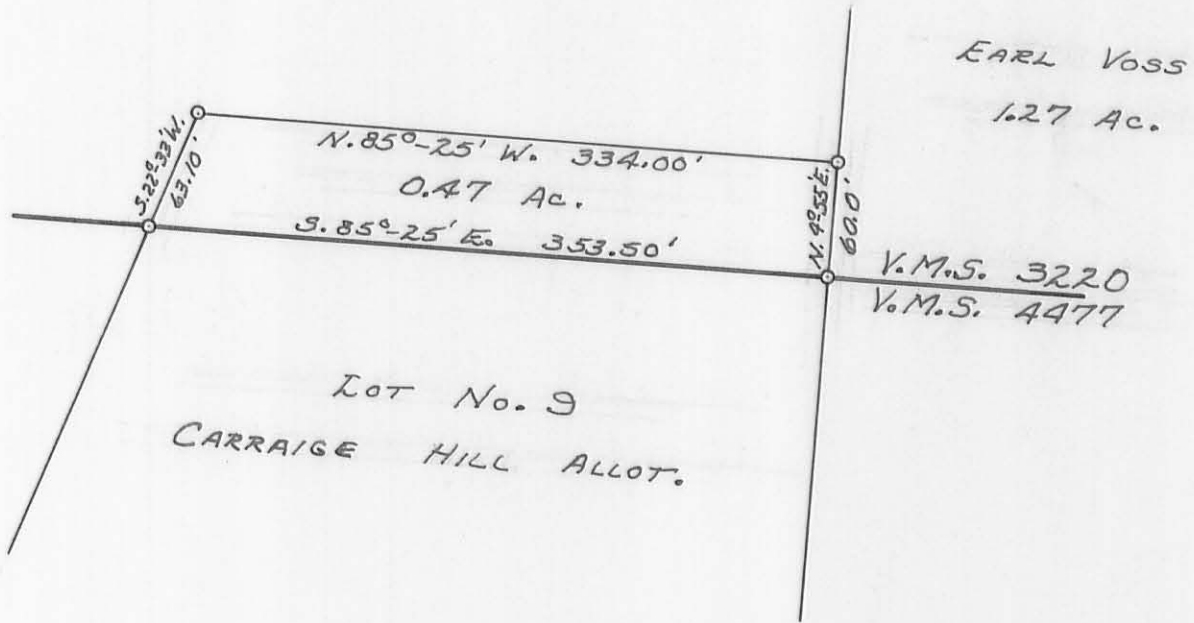


3728 2D

INDEXED ON MAP

On Plat Book  
11-9-64  
D.E.G.

R



Lot No. 9  
CARRAIGE HILL ALLOT.

EARL VOSS  
1.27 Ac.

V.M.S. 3220  
V.M.S. 4477

HEARFOOT - LOYETT SURVEY  
V.M.S. 3220  
JEFFERSON TOWNSHIP  
LOGAN COUNTY, OHIO  
SURVEYED BY F.F. WRIGHT - 1964  
SCALE: 1"=100

2P

3728

INDEXED ON MAP

DRAWN BY D.E.G.  
12/31/64

Kearfoot - Lovett Survey Jefferson Township September 1965 0.92 Acre.

The following described land in Jefferson Township, Logan County, Ohio and being in V.M.S. 3320.

Beginning at an iron at the N.W. corner of Lot Number 9 of Carriage Hill Allotment and in the south line of V.M.S. 3320. Thence with the North line of said Lot Number 9 and with the south line of V.M.S. 3320 S.  $85^{\circ} - 25'$  E. 353.50 feet to a round wood post at the N.E. corner of said Lot Number 9.

Thence with the west side of Earl Voss tract N.  $4^{\circ} - 55'$  E. 120.00 feet to an iron.

Thence N.  $85^{\circ} - 25'$  W. 315.00 feet to an iron.

Thence S.  $22^{\circ} - 33'$  W. 126.15 feet to the place of beginning. The last described line being the east side of a proposed fifty foot street.

The above described tract contains 0.92 of one acre and is off of the south side of a 107.73 acre tract now in the name of Robert J. Vovett.

cc  
Logan County Engineer



Revised Description  
11/20/65  
D.E.G.

INDEXED ON MAP

3720