

Wilqus Survey
 V.M.S. 3139
 Jefferson Township
 Logan County, Ohio
 October 30, 1965
 Scale 1" = 100'

I hereby certify that this plat is a correct representation of a survey made by me and that same shows the improvements as located on the premises. The improvements are entirely within the property lines and there are no encroachments on the premises by improvements on adjoining premisses.

Leslie H. Gasline
 DODSON SURVEYS
 Reg. Surveyor 5248
 Bellefontaine, Ohio

IP
 4002

INDEXED ON MAP

ON Plat Book
 12.14.66
 556

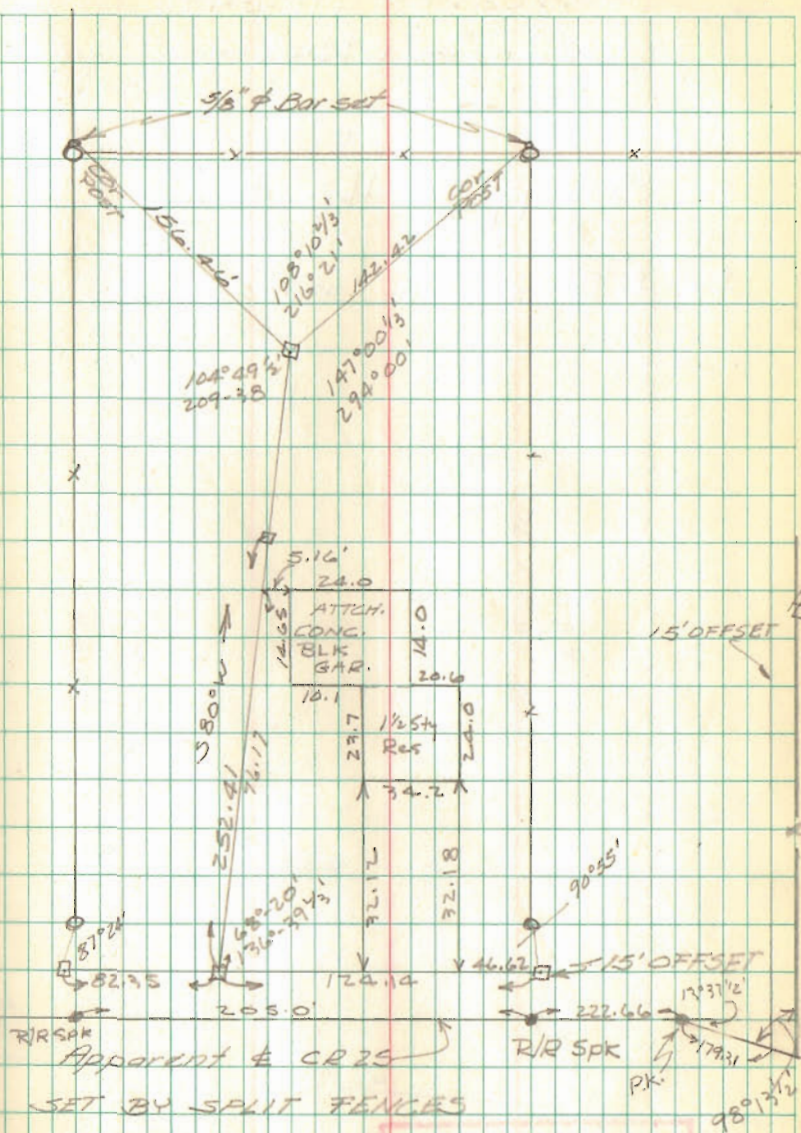
Wilgus Survey

11/20/65

CR 25

Geeslin
Slater

9



INDEXED ON MAP

4002