

START OF
JEFFERSON-PERRY TWP SURVEY
 South-end Jefferson Twp.-Perry Twp.
 Survey - M. # 2. - starting @ for Northernly run
 to "Rush Ck. - Jefferson - Perry Twp. Cor." etc.

Note

Line between #2wp Mon.
 and Iron pipe 0.11' East of
 Iron at Rd # 153

JEFF. - PERRY TWP. SURVEY

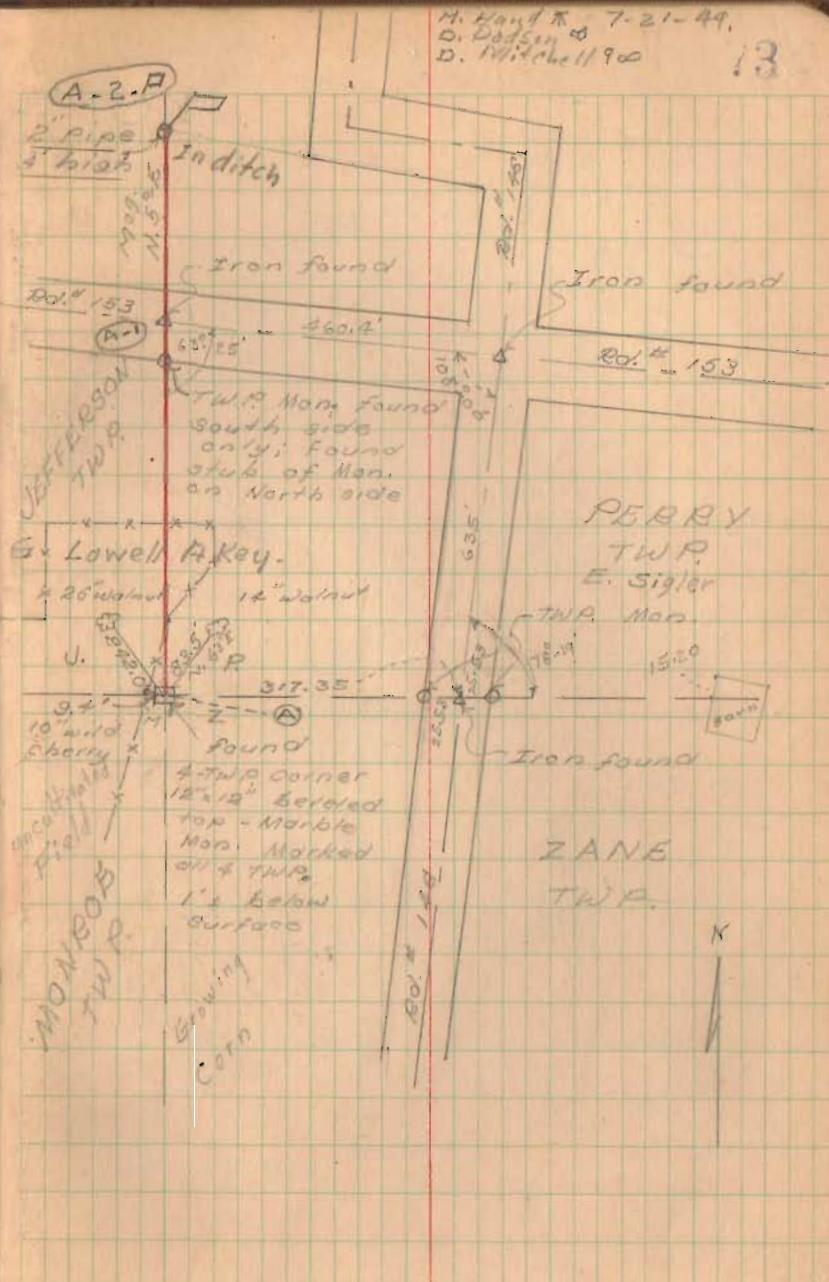
NOTE:

A "South-North" survey - alignment,
 being A-P A-D A-E
 --- 1200' ---
 red line on opp. page - only random line data
 found and accordingly used as such.

SEE - F.B. 689 - pg. 9 for Key Map
 of Jefferson-Perry 1949 Survey and
 its relation to meagre old twp.
 points, N. of (A-2-P) 2" pipe - Iron in Rd # 2
 only (1934) recorded @ and no history of estab. cited.

M. Land R. 7-21-49.
 D. Dodson
 D. Mitchell 1900

13



4391

INDEXED ON MAP