

Coons

January, 1970

Being situated in Jefferson Township, Logan County, Ohio;
and being a part of V.M.S. #6450.

Beginning at a stone at the intersection of the centerline
of County Road #10 with the east line of said V.M.S. #6450.

Thence with the centerline of said County Road #10
N 85°-19'W 776.2 feet to the northeast corner of a 0.91 acre tract.

Thence with the east side of said 0.91 acre tract S 9°-55'W
316.1 feet.

Thence continuing with the east side of said 0.91 acre tract
S 26°-14'W 376.0 feet to a point in the north right of way line
of State Route #33.

Thence with said north right of way line of State Route 33
S 40°-26'E 111.0 feet to an angle.

Thence again with said north right of way line of State
Route #33 S 40°-36'E 500.0 feet to an angle.

Thence again with said north right of way line of State Route
#33 S 42°-19'E 171.0 feet to a point in the east line of V.M.S. #6450.

Thence with the east line of V.M.S. #6450 N 22°-15'E 1262.5
feet to the place of beginning.

Containing 15.62 acres more or less. Taken from a 79.79 acre
tract.

Owen K. Shirk

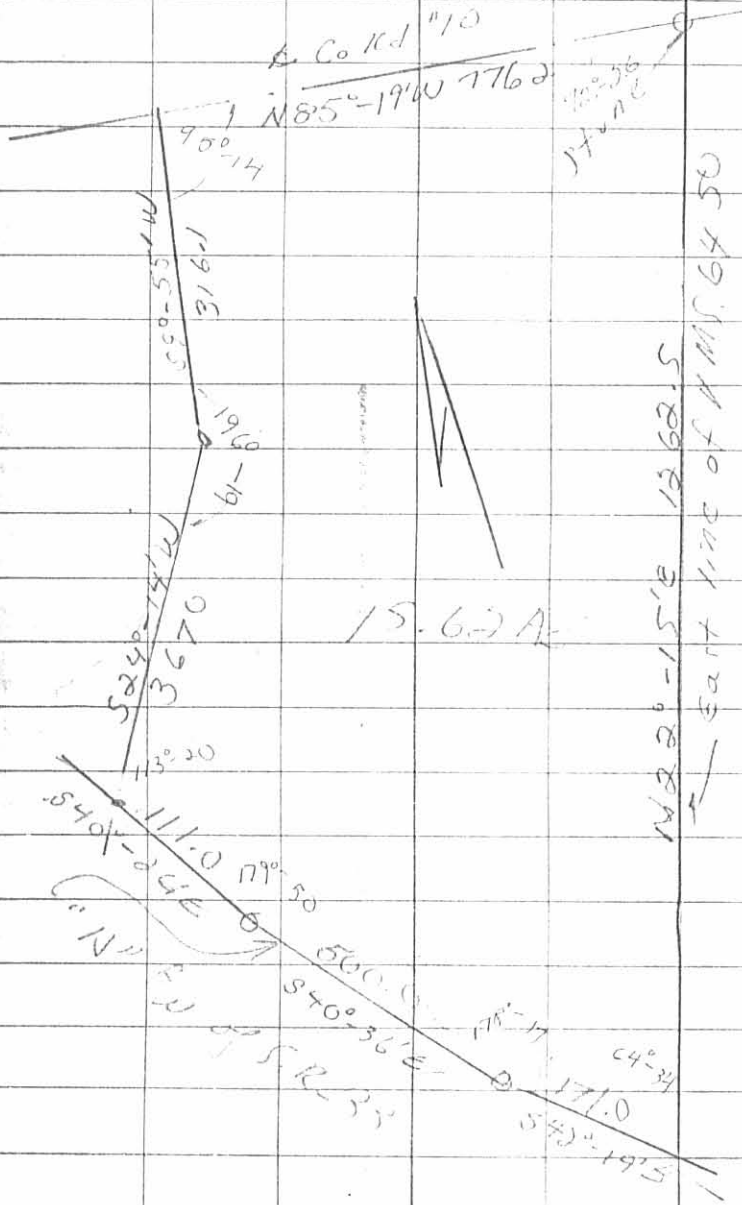
Surveyor 4271

4637 ID

INDEXED ON MAP

Coons Dam
V.M.S. 6450

See pg 7



Sept., 70

8

Dene only

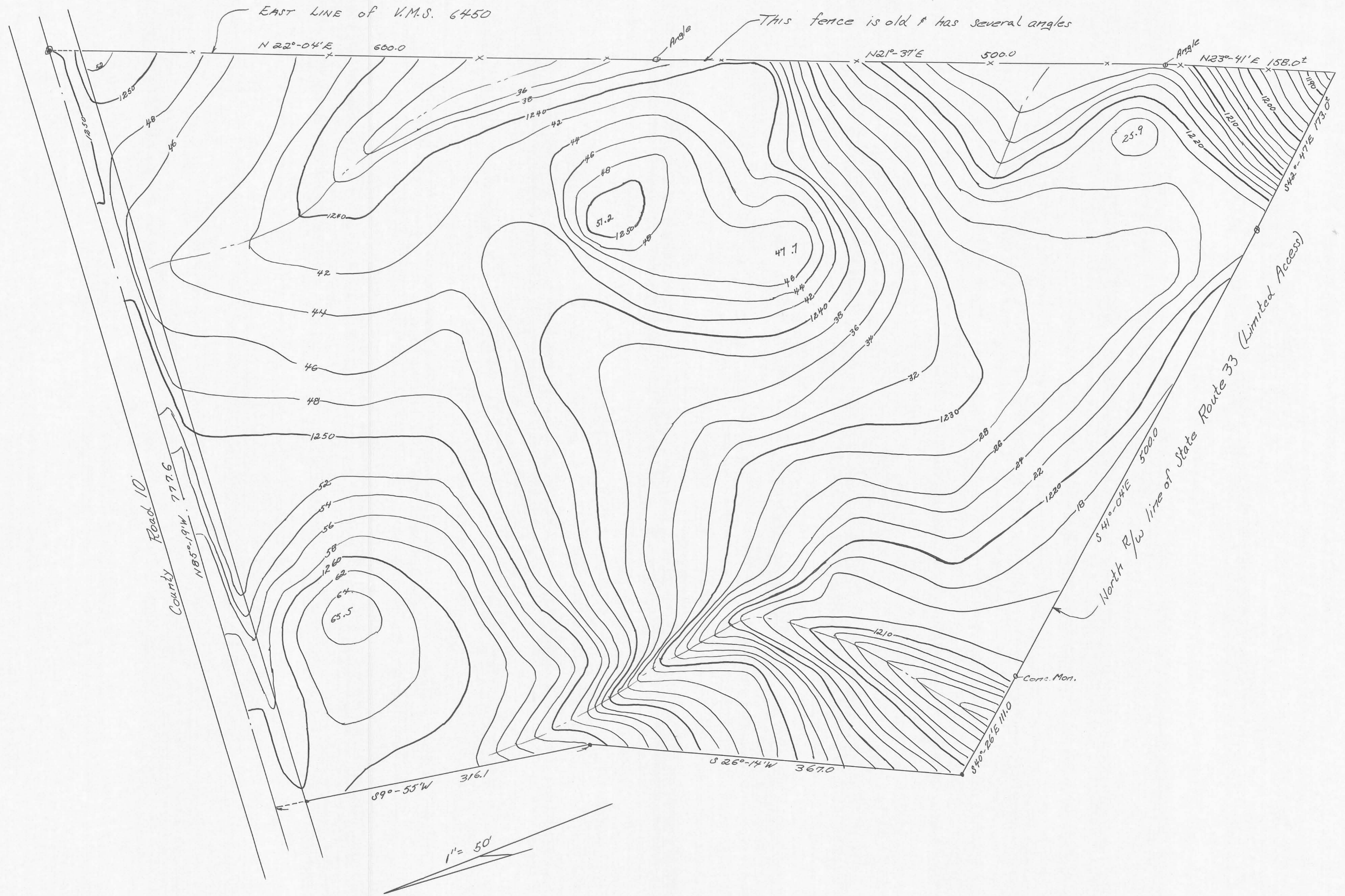
from Road

PA Records

4109

INDEXED ON MAP

INDEXED ON MAP
4637 IP



NOTE: The datum elevation has been assumed.

V.M.S. 6450
 JEFFERSON TOWNSHIP
 LOGAN COUNTY, OHIO
 MILLER SURVEY
 OWEN K. SHIRK, SURVEYOR 4271
 BELLEFONTAINE, OHIO
 1" = 50' - APRIL, 1970