

Lee Surveying and Mapping Co., Inc.

Land Surveys • Topography • Subdivisions • Construction Layout

117 N. Madriver St.
Bellefontaine OH 43311



Phone: (937) 593-7335
Fax: (937) 593-7444

GRYTKO 2.121 ACRES

Lying in Virginia Military Survey 3139, Jefferson Township, Logan County, Ohio.

Being out of the Ruth E. Grytko 104.08 acre tract as deeded and described in Official Record 890, Page 69, of the Logan County Record of Deeds and being more particularly described as follows:

Commencing at a railroad spike found at the intersection of center-lines of County Highway 2 (50 feet wide) and County Highway 5 (60 feet wide).

THENCE, with the center-line of County Highway 5, the following three courses:

N 45°-57'-14"E, a distance 59.50 feet to a 3/4 inch iron pipe found.

N 22°-44'-31"E, a distance of 483.96 feet to a 1 Inch square iron bolt found.

N 33°-39'-52"E, a distance of 208.78 feet to a MAG nail found.

THENCE, with the north line of the Jill L. McKellop and Terry J. McKellop 4.775 acre tract (O.R. 400, Pg. 249), S 61°-49'-09"E, a distance of 399.76 feet to a 5/8 inch iron rod set at THE TRUE POINT OF BEGINNING, passing a 5/8 inch iron rod found at 30.14 feet.

THENCE, N 33°-41'-12"E, a distance of 376.05 feet to a 5/8 inch iron rod set.

THENCE, S 29°-05'-47"E, a distance of 338.01 feet to a 5/8 inch iron rod found.

THENCE, with a west line of the Michael J. Wiseman 5.00 acre tract (O.R. 345, Pg. 563) S 21°-41'-43"W, a distance of 211.83 feet to a 5/8 inch iron rod found.

THENCE, with the north line of the aforesaid 4.775 acre tract, the following two courses:

N 58°-31'-51"W, a distance of 329.17 feet to a 5/8 inch iron rod found.

N 61°-49'-09"W, a distance of 15.75 feet to the point of beginning.

Containing 2.121 acres.

The basis for bearings is the north line of said McKellop 4.775 acre tract, being S 61°-49'-09"E, and all other bearings are from angles and distances measured in a field survey by Lee Surveying and Mapping Co., Inc. on January 22, 2008.



ORIGINAL STAMP IN GREEN

Description prepared by:

William K. Bruce
Professional Surveyor 7437
January 22, 2008

L-110018



REC'D 1-23-08 S.M.J.K.

2 WORKING DAYS
BEFORE YOU DIG
CALL TOLL FREE **800-362-2764**
OHIO UTILITIES PROTECTION SERVICE.

LEGEND

- 5/8 INCH IRON ROD SET
- 5/8 INCH IRON ROD FOUND
- ⊗ MAG NAIL FOUND
- 1 INCH SQUARE IRON BOLT FOUND
- ⊙ 3/4 INCH IRON PIPE FOUND
- ⊗ RAILROAD SPIKE FOUND

COUNTY HIGHWAY 5 (60')

483.96'
N 22°44'31" E

COUNTY HIGHWAY 2 (50')

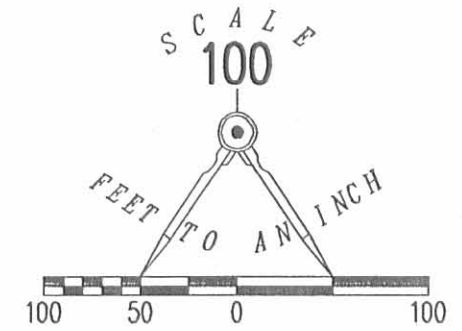
RUTH E. GRYTKO
104.08 ACRE TRACT
O.R. 890, PG. 69

JILL L. MCKELLOP AND TERRY J. MCKELLOP
4.775 ACRE TRACT
O.R. 400, PG. 429

MICHAEL J. WISEMAN
5.00 ACRE TRACT
O.R. 345, PG. 563

A SURVEY OF A 2.121 ACRE TRACT OUT OF THE
RUTH E. GRYTKO
104.08 ACRE TRACT
OFFICIAL RECORD 890, PAGE 69
VIRGINIA MILITARY SURVEY 3139
JEFFERSON TOWNSHIP
LOGAN COUNTY, OHIO

2.121 ACRES



ORIGINAL STAMP IN GREEN

SURVEYED BY:

William K. Bruce
WILLIAM K. BRUCE
PROFESSIONAL SURVEYOR 7437
JANUARY 22, 2008

COPYRIGHT 2008 BY:
LEE SURVEYING & MAPPING CO., INC.
117 North Madriver Street
BELLEFONTAINE, OHIO 43311
(937) 593-7335
surveys@lsmcinc.us

ADW D0108 110018 L-110018-3

INDEXED ON MAP

5557 IP



REC'D 1-6-99 JMY ok

Lee Surveying and Mapping Co., Inc.



Land Surveys • Topography • Subdivisions • Construction Layout

117 N. Madriver Street
Bellefontaine OH 43311

Phone: (937) 593-7335
Fax: (937) 593-7444

GRYTKO 4.775 ACRES

Lying in Virginia Military Survey 3139, Jefferson Township, Logan County, Ohio.

Being out of the Carl E. Grytko and Ruth E. Grytko original 119.58 acre tract as deeded and described in Volume 360, Page 163 of the Logan County Records of Deeds and being more particularly described as follows:

Beginning at a railroad spike set at the intersection of the center-lines of County Highway 5 and County Highway 2.

THENCE, with the center-line of County Highway 5, (60 feet wide), the following three (3) courses:

N 45°-57'-14" E, a distance of 59.50 feet to a 3/4 inch iron pipe found.

N 22°-44'-31" E, a distance of 483.96 feet to a 1 inch square bolt found.

N 33°-39'-52" E, a distance of 38.78 feet to a MAG nail set at the TRUE POINT OF BEGINNING.

THENCE, with the center-line of County Highway 5, N 33°-39'-52" E, a distance of 170.00 feet to a MAG nail set.

THENCE, S 61°-49'-10" E, a distance of 415.52 feet to a 5/8 inch iron rod set, passing a 5/8 inch iron rod set at 30.14 feet.

THENCE, S 58°-31'-51" E, a distance of 329.17 feet to a 5/8 inch iron rod set.

THENCE, with the lines of the Michael J. Wiseman 5.00 acre tract, (O.R. 345, Pg. 563) the following four courses:

S 21°-41'-44" W, a distance of 66.07 feet to a 5/8 inch iron rod found.

N 69°-30'-32" W, a distance of 31.16 feet to a 5/8 inch iron rod found.

S 20°-22'-53" W, a distance of 158.51 feet to a 5/8 inch iron rod found.

S 43°-49'-01" W, a distance of 163.94 feet to a railroad spike found on the center-line of County Highway 2, passing a 5/8 inch iron rod found at 120.90 feet.

THENCE, with the center-line of County Highway 2, (50 feet wide), S 79°-24'-00" W, a distance of 236.49 feet to a MAG nail set.

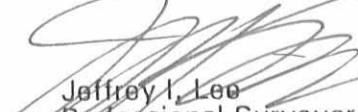
THENCE, N 11°-40'-34" E, a distance of 398.84 feet to a 5/8 inch iron rod set, passing a 5/8 inch iron rod set at 27.02 feet.

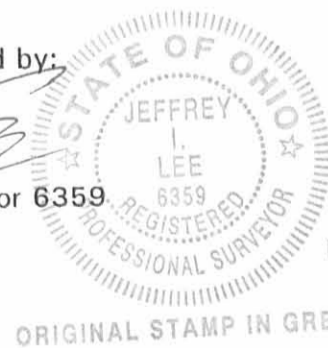
THENCE, N 61°-48'-18" W, a distance of 416.64 feet to the point of beginning, passing a 5/8 inch iron rod set at 386.50 feet.

Containing 4.775 acres, of which 0.260 acre is within the highway rights-of-way.

The basis for bearings is the center-line of County Highway 2, being S 79°-24'-00" W, and all other bearings are from angles and distances measured in a field survey by Lee Surveying and Mapping Co., Inc. on January 5, 1999.

Description prepared by:


Jeffrey I. Lee
Professional Surveyor 6359
January 5, 1999



L-110

ORIGINAL STAMP IN GREEN

INDICATE ON MAP
5557 2D-1



DEED 12-31-98 smy AL

Lee Surveying and Mapping Co., Inc.



Land Surveys • Topography • Subdivisions • Construction Layout

117 N. Madriver Street
Bellefontaine OH 43311

Phone: (937) 593-7335
Fax: (937) 593-7444

GRYTKO 5.725 ACRES

Lying in Virginia Military Survey 3139, Jefferson Township, Logan County, Ohio.

Being out of the Carl E. Grytko and Ruth E. Grytko original 119.58 acre tract as deeded and described in Volume 360, Page 163 of the Logan County Records of Deeds and being more particularly described as follows:

Beginning at a railroad spike set at the intersection of the center-lines of County Highway 5 and County Highway 2.

THENCE, with the center-line of County Highway 5, (60 feet wide), the following three (3) courses:

N 45°-57'-14" E, a distance of 59.50 feet to a 3/4 inch iron pipe found.

N 22°-44'-31" E, a distance of 483.96 feet to a 1 inch square bolt found.

N 33°-39'-52" E, a distance of 38.78 feet to a MAG nail set.

THENCE, S 61°-48'-18" E, a distance of 416.64 feet to a 5/8 inch iron rod set, passing a 5/8 inch iron rod set at 30.14 feet.

THENCE, S 11°-40'-34" W, a distance of 398.84 feet to a MAG nail set on the center-line of County Highway 2, passing a 5/8 inch iron rod set at 371.82 feet.

THENCE, with the center-line of County Highway 2, (50 feet wide), the following three (3) courses:

S 79°-24'-00" W, a distance of 247.07 feet to a 5/8 inch iron rod found.

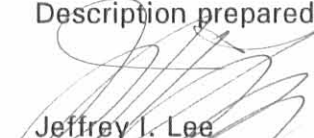
N 84°-12'-19" W, a distance of 124.07 feet to a 5/8 inch iron rod found.

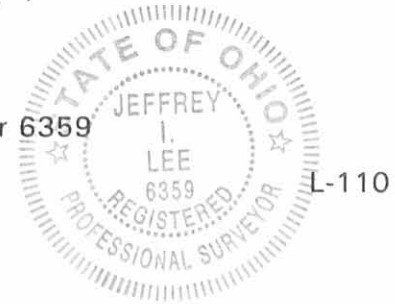
N 59°-40'-04" W, a distance of 198.76 feet the point of beginning.

Containing 5.725 acres, of which 0.706 acre is within the highway rights-of-way.

The basis for bearings is the center-line of County Highway 2 at the southeast corner of the tract, being S 79°-24'-00" W, and all other bearings are from angles and distances measured in a field survey by Lee Surveying and Mapping Co., Inc. on December 28, 1998.

Description prepared by:


Jeffrey I. Lee
Professional Surveyor 6359
December 30, 1998

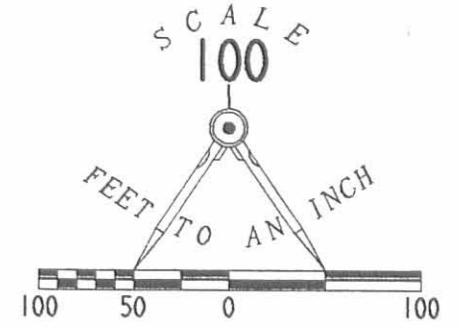


ORIGINAL STAMP IN GREEN

5557 202

REFERENCES

LOGAN COUNTY ENGINEER'S FILES:
FIELD BOOK 579, PAGES 39-52
X-5B



LEGEND

- 5/8" IRON ROD SET
- 5/8" IRON ROD FOUND
- ⊕ RAILROAD SPIKE SET
- ⊗ RAILROAD SPIKE FOUND
- ⊙ MAG NAIL SET
- 1" SQUARE BOLT FOUND
- 3/4" IRON PIPE FOUND
- X- FENCE

CARL E. GRYTKO
AND RUTH E. GRYTKO
ORIG. 119.58 ACRES
VOL. 360, PG. 163

MICHAEL J. WISEMAN
AND CHERI L. WISEMAN
5.00 ACRES
O.R. 345, PG. 563

5.725 ACRES
OF WHICH 0.706 ACRE IS IN
THE HIGHWAY RIGHT-OF-WAY

4.775 ACRES
OF WHICH 0.260 ACRE IS IN
THE HIGHWAY RIGHT-OF-WAY

**SURVEY OF TWO TRACTS OUT THE
CARL E. GRYTKO AND RUTH E. GRYTKO
ORIGINAL 119.58 ACRE TRACT
VOLUME 360, PAGE 163
VIRGINIA MILITARY SURVEY 3139
JEFFERSON TOWNSHIP
LOGAN COUNTY, OHIO**



ORIGINAL STAMP IN GREEN

SURVEYED BY:

Jeffrey L. Lee
JEFFREY L. LEE
PROFESSIONAL SURVEYOR 6359
DECEMBER 28, 1998

COPYRIGHT 1999 BY:

LEE SURVEYING & MAPPING CO., INC.
117 North Madriver Street
BELLEFONTAINE, OHIO 43311
(937) 593-7335

D 338

L110.GCD

L-110-3

5557 2D

Lee Surveying and Mapping Co.



Farm Surveys • Lot Surveys • Topography • Subdivisions • Construction Layout

855 EAST SANDUSKY AVENUE
BELLEFONTAINE, OHIO 43311

(513) 593-5780

CLAYTON M. LEE, P.S.
JEFFREY I. LEE, P.S.

CRYTOKO SURVEY

Lying in V.M.S. 3139, Jefferson Township, Logan County, Ohio and being out of that 119.58 acre tract deeded and described in Volume 360, Page 163 of the Logan County Records of Deeds and more particularly described as follows:

Beginning at an iron spike set in the center-line of County Road No. 2, a distance easterly along the center-line of said County Road 2, of 808.54 feet from the center-line of County Road No. 5.

THENCE, N 43°-51'-20" E, a distance of 164.08 feet, along a fence to an iron rod, passing an iron rod set in the right-of-way line at 42.97 feet.

THENCE, N 20°-12'-15" E, a distance of 158.62 feet to an iron rod.

THENCE, S 69°-32'-20" E, a distance of 31.30 feet to an iron rod set in a fence line.

THENCE, N 21°-39' E, a distance of 278.78 feet to an iron rod.

THENCE, parallel to said County Road 2, N 79°-24' E, a distance of 346.16 feet to an iron rod.

THENCE, S 2°-57'-20" E, a distance of 455.28 feet to an iron spike set in the center-line of County Road 2, passing an iron rod set in the right-of-way line at 430.07 feet.

THENCE, with said center-line, S 79°-24' W, a distance of 675.89 feet to the point of beginning. Containing 5.00 acres.

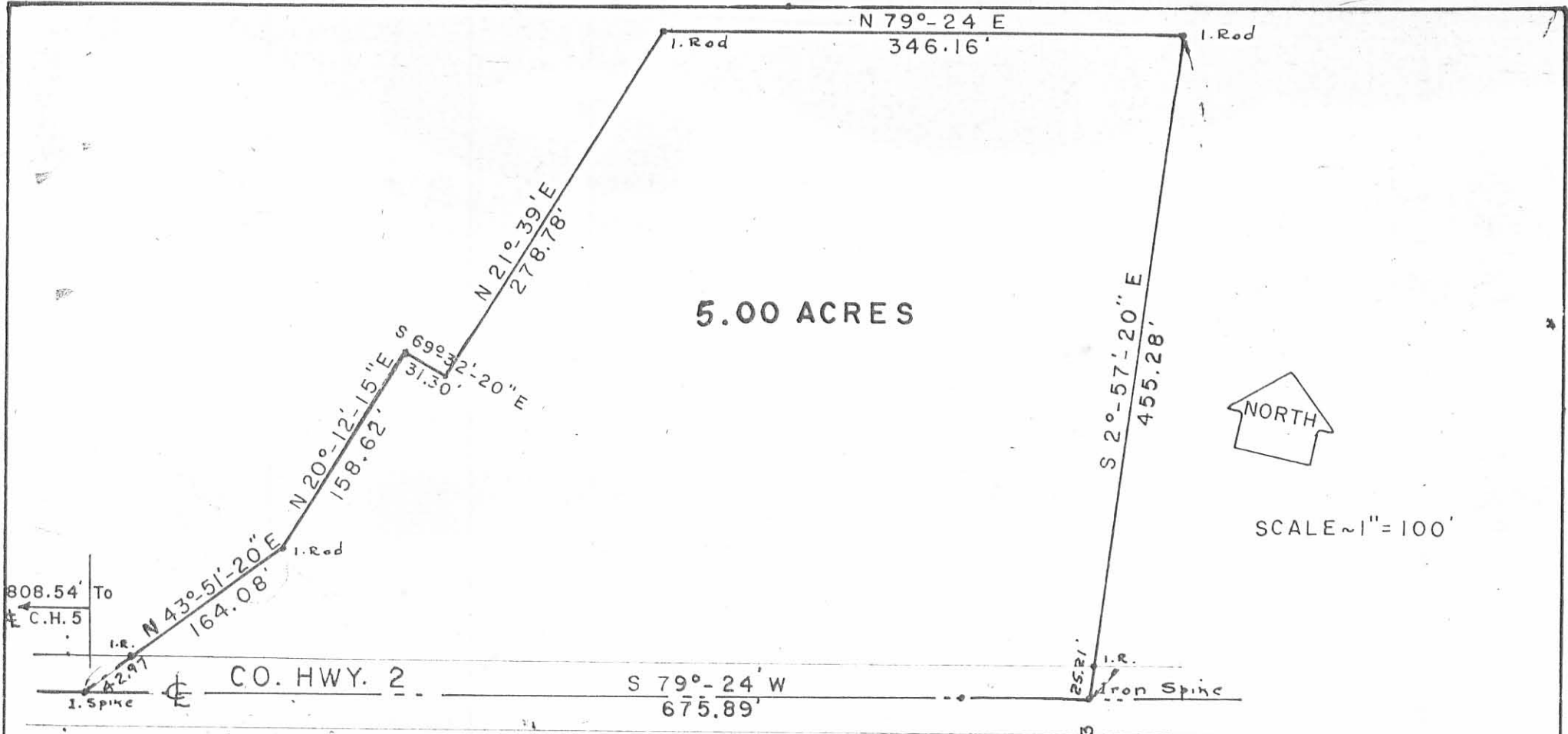
Last previous deed reference: Volume 360, Page 163.

Surveyed by:



Clayton M. Lee
Clayton M. Lee
Reg. Surveyor No. 6181
11-7-77





5.00 ACRES



SCALE ~ 1" = 100'

SURVEY OF 5.00 ACRES OUT OF
 THE GRITKO 119.58 TRACT (Vol. 360, Pg. 163)
 V.M.S. 3139, JEFFERSON TOWNSHIP
 LOGAN COUNTY, OHIO

Surveyed by:

Clayton M. Lee

Clayton M. Lee
 Reg. Surveyor 6181

11-7-77



INDEXED ON MAP
 5557 3P

Lee Surveying & Mapping Co.
 855 E. Sandusky Ave.
 BELLEFONTAINE, OHIO 43311
 (513) 593-5780



I hereby certify that this map represents a true survey that was made by me.

Clayton M. Lee
 Clayton M. Lee P.S.
 Reg. Surveyor No. 6181

O.W. STOLL et ux
 VOL. 326
 PG. 524
 233.79 ACRES
 94.58 "
 139.21 Remaining

SCALE ~ 1" = 200'

C.W. STOLL et ux
 140.15 ac.
 Vol. 342
 Pg. 780

OUT OF
 JEFFERSON TOWNSHIP
 LOGAN COUNTY, OHIO
 V.M.S. 3139

PENNOCK
 100 ac.

BOSART
 74.44 ac.

D. TENNANT et ux
 9.74 ac.

R. POLAND et ux.
 20.25 ac.

119.58 ACRES

25 ac.
 Vol. 326
 Pg. 525