

LESLIE H. GEESLIN
REGISTERED SURVEYOR NO. 5248
P. O. BOX 274
RUSHSVLVANIA, OHIO 43347

TELEPHONE: (513) 468-2793

CORE SURVEY

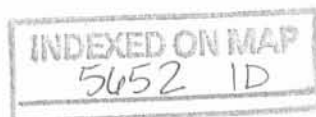
April, 1981

The following described real estate situated in the State of Ohio, County of Logan, Township of Jefferson, being part of Virginia Military Survey No. 3325 and being more particularly described as follows:

Beginning at a stone at the intersection of the centerlines of Township Roads 126 and 127; thence with said T. R. 126 N. $4^{\circ} 16' 45''$ E. 2370.42 feet to a P. K. nail; thence with a ditch S. $81^{\circ} 39' 51''$ E. 1267.33 feet to an angle in said ditch, said point being N. $81^{\circ} 39' 51''$ W. 16.0 feet from an iron bar; thence with said ditch S. $3^{\circ} 13'$ W. 1436.51 feet to an iron bar; thence S. $85^{\circ} 47'$ E. 19.57 feet to an iron bar in the north line of the Appleseed Ridge Girl Scout Council's 27.71 acre tract; thence with one of said Council's west lines S. $4^{\circ} 50'$ W. 534.00 feet to an iron bar; thence with one of said Council's north lines N. $88^{\circ} 31'$ W. 511.40 feet to an iron bar; thence with said Council's west line S. $3^{\circ} 29'$ W. 276.44 feet to an iron bar in the centerline of T. R. 127; thence with said T. R. 127 N. $86^{\circ} 23'$ W. 798.28 feet to the place of beginning.

Containing 65.19 acres more or less.

The above described 65.19 acres being in the southwest corner of Edward Core Jr.'s 279.02 acre tract.





D

S. 81° 39' 51" E. 1267.33'

16' RUSHCREEK TOWNSHIP
JEFFERSON TOWNSHIP

CORE SURVEY
APRIL, 1981
V.M.S. 3325
JEFFERSON TOWNSHIP
LOGAN COUNTY, OHIO
SCALE: 1"=300'

65.19 Ac.

Twp. Ro. 126
N. 4° 16' 45" E,
2370.42'

S. 3° 13' W. 1436.51'

C 5.85° 47' E.
19.57' C

APPLESEED RIDGE
GIRL SCOUT COUNCIL
27.71 AC.

C N. 88° 31' W. 511.40' C
S. 4° 50' W. 534.00'

798.28' N. 86° 23' W. B
Twp. Ro 127

LEGEND:
A = STONE
B = R.R. SPIKE
C = 5/8" IRON BAR
D = P.K. NAIL



~~655~~
5652 HP

INDEXED ON MAP LESLIE H. GEESLIN
RUSHSYLVANIA, OHIO

Lee Surveying and Mapping Co., Inc.

Land Surveys • Topography • Subdivisions • Construction Layout

117 N. Madriver St.
Bellefontaine OH 43311



Phone: (937) 593-7335
Fax: (937) 593-7444

WALKER 218.810 ACRES

Lying in Virginia Military Survey 3325, Rushcreek and Jefferson Townships, Logan County, Ohio.

Being all of the remainder of the Julianna M. Walker original 261.096 acre tract as deeded and described in Official Record 258, Page 227, Tract I of the Logan County Records of Deeds and being more particularly described as follows:

Beginning at a MAG nail found on the northwest corner of Virginia Military Survey 3325 at the intersection of the center-lines of Township Road 126 and Ohio Route 47 on Ohio Route 47 center-line station 1114+67.3 (Logan County Engineer's file L-49).

THENCE, with the north line of Virginia Military Survey 3325 and the center-line of Ohio Route 47 (90 feet wide), N 85°-48'-31" E, a distance of 1188.96 feet to a railroad spike found at the TRUE POINT OF BEGINNING.

THENCE, with the north line of Virginia Military Survey 3325 and the center-line of Ohio Route 47, N 85°-48'-31" E, a distance of 824.83 feet to a MAG nail set.

THENCE, with the lines of the Ryland M. Eades 14.764 acre tract (O.R. 246, Pg. 869), the following three (3) courses:

S 66°-58'-16" W, a distance of 602.19 feet to a 6 inch wood post found, passing a 5/8 inch iron rod set at 142.44 feet;

S 2°-24'-00" E, a distance of 406.99 feet to a 6 inch wood post found;

S 88°-13'-20" E, a distance of 1220.74 feet to a 6 inch wood post found.

THENCE, with the west lines of the Robert C. Anderson original 68.61 acre tract (O.R. 320, Pg. 488, Tract III), and original 122.70 acre tract (O.R. 320, Pg. 488, Tract II), S 6°-31'-08" E, a distance of 3544.24 feet to a 5/8 inch iron rod set.

THENCE, with the north line of the Robert C. Anderson 13.79 acre tract (O.R. 320, Pg. 488, Tract I) and the north line of the Appleseed Ridge Girl Scout Council, Inc. original 41.55 acre tract (Vol. 312, Pg. 414), S 85°-08'-55" W, a distance of 1435.69 feet to a 5/8 inch iron rod found.

THENCE, with the lines of the said 41.55 acre tract, the following three (3) courses:

S 4°-22'-59" E, a distance of 534.06 feet to a 5/8 inch iron rod found;

S 82°-25'-32" W, a distance of 512.08 feet to a 5/8 inch iron rod found;

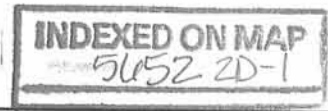
S 5°-37'-22" E, a distance of 276.62 feet to a railroad spike found, passing a 5/8 inch iron rod found at 256.62 feet.

THENCE, with the center-line of Township Road 127 (40 feet wide), S 84°-33'-34" W, a distance of 60.05 feet to a MAG nail found.

THENCE, with the east line of the Julianna M. Walker 5.518 acre tract (O.R. 542, Pg. 946, Tract G), N 5°-35'-39" W, a distance of 263.05 feet to a 5/8 inch iron rod set, passing a 5/8 inch iron rod found at 20.00 feet.

THENCE, with the north line of the said 5.518 acre tract, S 85°-13'-07" W, a distance of 443.99 feet to a 5/8 inch iron rod set.

THENCE, with the east lines of the said 5.518 acre tract, the Julianna M. Walker 5.002 acre tract (O.R. 542, Pg. 944, Tract F), the Julianna M. Walker 5.908 acre tract (O.R. 542, Pg. 942, Tract E), the Julianna M. Walker 6.253 acre tract (O.R. 542, Pg. 940, Tract D) and the Julianna M. Walker 5.002 acre tract (O.R. 542, Pg. 938, Tract C), N 4°-46'-53" W, a distance of 3473.50 feet to a 5/8 inch iron rod set.



Lee Surveying and Mapping Co., Inc.

Land Surveys • Topography • Subdivisions • Construction Layout

117 N. Madriver St.
Bellefontaine OH 43311



Phone: (937) 593-7335
Fax: (937) 593-7444

THENCE, with the lines of the Julianna M. Walker 8.893 acre tract (O.R. 542, Pg. 936, Tract B), the following three (3) courses:

N 85°-13'-07" E, a distance of 129.50 feet to a 5/8 inch iron rod set;

N 4°-46'-53" W, a distance of 696.66 feet to a 5/8 inch iron rod set;

S 87°-33'-43" W, a distance of 133.11 feet to a 5/8 inch iron rod set.

THENCE, with the east lines of the said 8.893 acre tract and the Julianna M. Walker 5.743 acre tract (O.R. 542, Pg. 934, Tract A), N 4°-46'-53" W, a distance of 332.39 feet to a 5/8 inch iron rod set.

THENCE, with the lines of the said 5.743 acre tract, the following two (2) courses:

N 2°-11'-13" W, a distance of 50.24 feet to a 5/8 inch iron rod set;

N 85°-48'-25" E, a distance of 449.95 feet to a 5/8 inch iron rod found.

THENCE, with the lines of the Bradley J. Goff 2.143 acre tract (O.R. 433, Pg. 274), the following two (2) courses:

S 2°-12'-57" E, a distance of 100.34 feet to a 5/8 inch iron rod found;

N 86°-04'-29" E, a distance of 226.00 feet to a 5/8 inch iron rod found.

THENCE, with the lines of the Connie L. Regula 5.31 acre tract (O.R. 13, Pg. 350) the following seven (7) courses:

S 2°-09'-34" E, a distance of 414.18 feet to a 5/8 inch iron rod found;

N 85°-44'-29" E, a distance of 230.82 feet to a 5/8 inch iron rod found;

N 25°-36'-55" E, a distance of 156.80 feet to a 5/8 inch iron rod set;

N 14°-19'-41" E, a distance of 231.00 feet to a 5/8 inch iron rod found;

N 13°-07'-18" W, a distance of 144.21 feet to a 5/8 inch iron rod found;

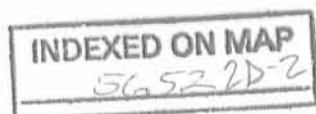
N 85°-47'-11" W, a distance of 133.90 feet to a 5/8 inch iron rod set;

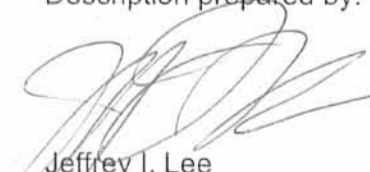
N 2°-05'-10" W, a distance of 309.91 feet to the point of beginning, passing a 5/8 inch iron rod found at 264.91 feet.

Containing 218.810 acres, of which 0.821 acre is within the highway rights-of-way, 110.929 acres are in Rushcreek Township and 107.881 acres are in Jefferson Township.

The basis for bearings is the north line of Virginia Military Survey 3325, being N 85°-48'-31" E, and all other bearings are from angles and distances measured in a field survey by Lee Surveying and Mapping Co., Inc. on June 10, 2002.

Description prepared by:

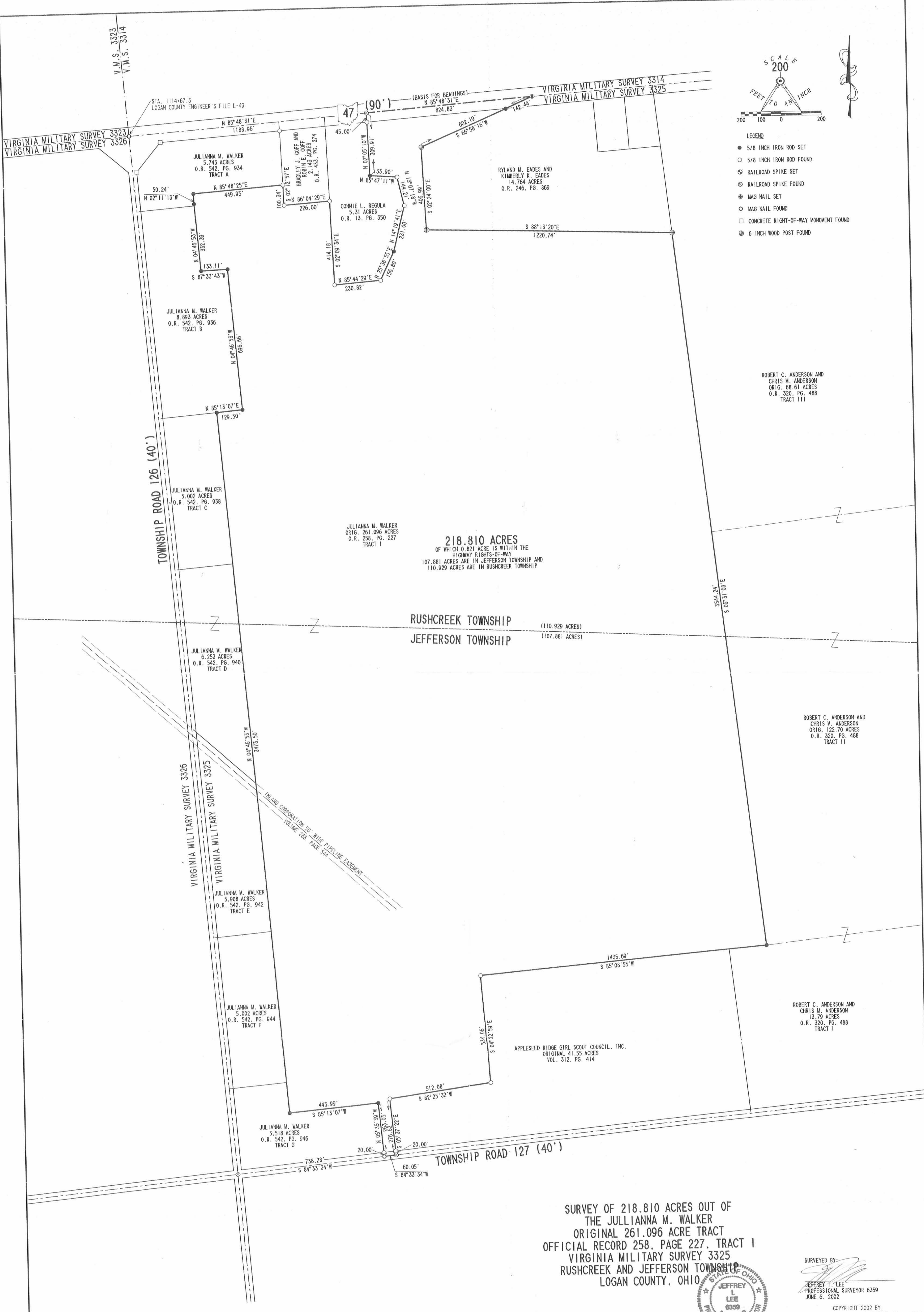



Jeffrey I. Lee
Professional Surveyor 6359
June 12, 2002
Revised June 21, 2002



ORIGINAL STAMP IN GREEN

L-3282



SCALE
200
FEET TO AN INCH

LEGEND

- 5/8 INCH IRON ROD SET
- 5/8 INCH IRON ROD FOUND
- ⊙ RAILROAD SPIKE SET
- ⊙ RAILROAD SPIKE FOUND
- ⊙ MAG NAIL SET
- ⊙ MAG NAIL FOUND
- CONCRETE RIGHT-OF-WAY MONUMENT FOUND
- ⊙ 6 INCH WOOD POST FOUND

218.810 ACRES
OF WHICH 0.821 ACRE IS WITHIN THE
HIGHWAY RIGHTS-OF-WAY
107.881 ACRES ARE IN JEFFERSON TOWNSHIP AND
110.929 ACRES ARE IN RUSHCREEK TOWNSHIP

RUSHCREEK TOWNSHIP (110.929 ACRES)
JEFFERSON TOWNSHIP (107.881 ACRES)

SURVEY OF 218.810 ACRES OUT OF
THE JULLIANNA M. WALKER
ORIGINAL 261.096 ACRE TRACT
OFFICIAL RECORD 258, PAGE 227, TRACT I
VIRGINIA MILITARY SURVEY 3325
RUSHCREEK AND JEFFERSON TOWNSHIP
LOGAN COUNTY, OHIO



SURVEYED BY:
Jeffrey T. Lee
JEFFREY T. LEE
PROFESSIONAL SURVEYOR 6359
JUNE 6, 2002

COPYRIGHT 2002 BY:
LEE SURVEYING & MAPPING CO., INC.
117 North Madriver Street
BELLEFONTAINE, OHIO 45311
(937) 593-7335
D 407 BRKHDR (BRKHDR.DAT) L-3282-1

2 WORKING DAYS
BEFORE YOU DIG
CALL TOLL FREE 800-362-2764
OHIO UTILITIES PROTECTION SERVICE

INDEXED ON MAP
5052 2P

EXHIBIT "1"

LESLIE H. GEESLIN

REGISTERED SURVEYOR NO. 5248

P. O. BOX 274

RUSHSVLVANIA, OHIO 43347

PHONE: (513) 468-2793

FLANNERY SURVEY

September, 1978

The following described real estate situated in the State of Ohio, County of Logan, Townships of Rushcreek and Jefferson and being part of Virginia Military Surveys 3325 and 3326 and more particularly described as follows:

Beginning at a stone at the intersection of the Centerlines of Township Roads 127 and 126 in the west line of Virginia Military Survey No. 3325; thence with the centerline of T. R. 126 and the west line of V. M. S. 3325 N. 4° 16' 45" E. 3882.41 feet to an iron bar that is N. 85° 21' W. 1.81 feet from a stone; thence N. 85° 21' W. 197.55 feet to a wood corner post; thence N. 2° 54' E. 218.93 feet to a wood corner post in the south line of Thelma Berry's 40.00 acre tract; thence with said Berry's south line S. 86° 44' E. 202.85 feet to an iron bar in the centerline of T. R. 126 and the west line of V. M. S. 3325; thence with said centerline and V. M. S. line N. 4° 16' 45" E. 1037.32 feet to an iron bar in the centerline of S. R. 47; thence with said centerline S. 85° 08' E. 979.44 feet to an iron bar; thence S. 6° 54' W. 827.69 feet to an iron bar; thence S. 85° 08' E. 231.23 feet to an iron bar; thence N. 34° 11' 12" E. 156.80 feet to an iron bar; thence N. 23° 36' E. 231.00 feet to an iron bar; thence N. 3° 56' 48" W. 144.15 feet to an iron bar; thence N. 76° 46' 48" W. 133.90 feet to an iron bar; thence N. 6° 54' E. 309.91 feet to an iron bar in the centerline of S. R. 47, passing an iron bar at 264.91 feet; thence with said centerline S. 85° 08' E. 1124.98 feet to an iron bar at the northwest corner of Richard L. Snider's 1.03 acre tract; thence with said Snider's west line S. 4° 48' 50" W. 299.70 feet to an iron bar; thence with the south line of said Snider and the south line of Edmond Marsman's 1.08 acre tract S. 85° 05' 40" E. 314.00 feet to an iron bar in the west line of the

INDEXED ON MAP

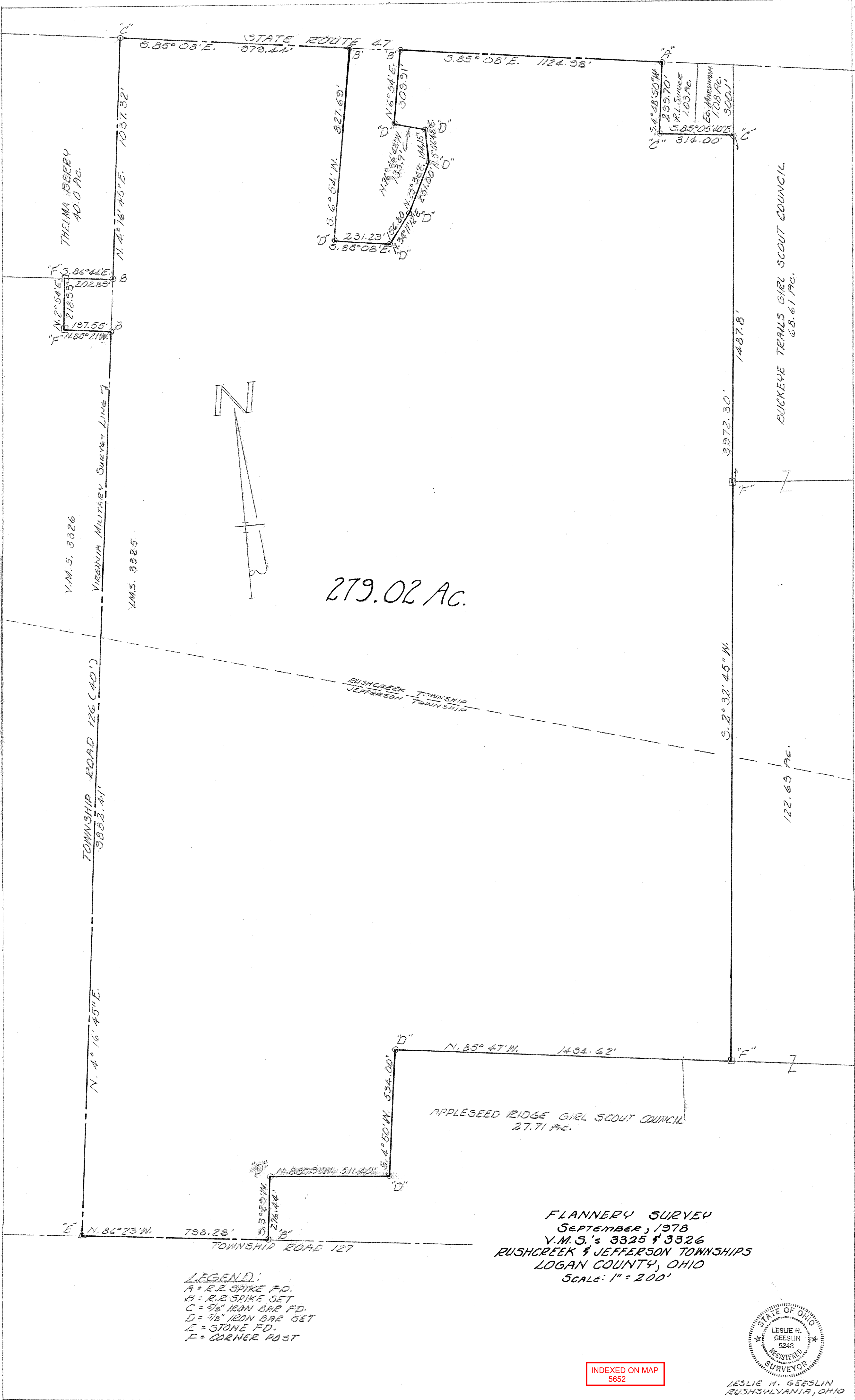
5652 3D-1

Buckeye Trails Girl Scout Council's 68.61 acre tract as described in D. B. Vol. 334 Pg. 768; thence with said west line and the west line of the Buckeye Trails Girl Scout Council's 122.69 acre tract as described in D. B. Vol. 305 Pg. 85 S. $2^{\circ} 32' 45''$ W. 3972.30 feet to a corner post in the north line of the Buckeye Trails Girl Scout Council's 13.79 acre tract; thence with the north line of said 13.79 acre tract and the north line of the Annleseed Ridge Girl Scout Council's 27.71 acre tract N. $85^{\circ} 47'$ W. 1434.62 feet to an iron bar; thence with a west line of said 27.71 acre tract S. $4^{\circ} 50'$ W. 534.00 feet to an iron bar; thence with a north line of said 27.71 acre tract N. $88^{\circ} 31'$ W. 511.40 feet to an iron bar; thence with a west line S. $3^{\circ} 29'$ W. 276.44 feet to an iron bar in the centerline of T. R. 127; thence with said centerline N. $86^{\circ} 23'$ W. 798.28 feet to the place of beginning.

Containing 279.02 acres more or less of which ^{167.20}~~172.20~~ acres are in V. M. S. 3325, Rushcreek Twp., 1.02 acre is in V. M. S. 3326, Rushcreek Twp. and ~~105.00~~^{110.80} acres are in V. M. S. 3326, Jefferson Twp..

Reference is hereby made to a plat of this survey on file with the Logan County Engineer.

INDEXED ON MAP
5652 3D-2



279.02 Ac.

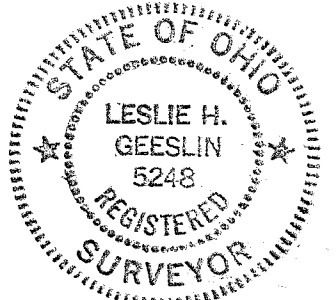
APPLESEED RIDGE GIRL SCOUT COUNCIL
27.71 Ac.

BUCKEYE TRAILS GIRL SCOUT COUNCIL
68.61 Ac.

THELMA BERRY
A.O.U. AC.

FLANNERY SURVEY
SEPTEMBER, 1978
Y.M.S.'s 3325 & 3326
RUSHCREEK & JEFFERSON TOWNSHIPS
LOGAN COUNTY, OHIO
SCALE: 1" = 200'

LEGEND:
A = R.R. SPIKE F.D.
B = R.R. SPIKE SET
C = 5/8" IRON BAR F.D.
D = 5/8" IRON BAR SET
E = STONE F.D.
F = CORNER POST



INDEXED ON MAP
5652

LESLIE H. GEESLIN
RUSHSVLVANIA, OHIO

Revised 12-18-01 OK JEN

Lee Surveying and Mapping Co., Inc.

Land Surveys • Topography • Subdivisions • Construction Layout

117 N. Madriver St.
Bellefontaine OH 43311



Phone: (937) 593-7335
Fax: (937) 593-7444

WALKER 5.743 ACRES TRACT A

Lying in Virginia Military Survey 3325, Rushcreek Township, Logan County, Ohio.

Being out of the Julianna M. Walker original 261.096 acre tract as deeded and described in Official Record 258, Page 227, Tract I of the Logan County Records of Deeds and being more particularly described as follows:

Beginning at a MAG nail found on the northwest corner of Virginia Military Survey 3325 at the intersection of the center-lines of Township Road 126 and Ohio Route 47 on Ohio Route 47 center-line station 1114+67.3 (Logan County Engineer's file L-49).

THENCE, with the north line of Virginia Military Survey 3325 and the center-line of Ohio Route 47 (90 feet wide), N 85°-48'-31" E, a distance of 753.41 feet to a railroad spike set.

THENCE, with the west line of the Bradley J. Goff 2.143 acre tract (O.R. 433, Pg. 274), S 2°-11'-01" E, a distance of 312.00 feet to a 5/8 inch iron rod set, passing a 5/8 inch iron rod found at 45.03 feet.

THENCE, S 85°-48'-31" W, a distance of 450.00 feet to a 5/8 inch iron rod set.

THENCE, S 2°-11'-01" E, a distance of 50.24 feet to a 5/8 inch iron rod set.

THENCE, S 4°-46'-41" E, a distance of 8.91 feet to a 5/8 inch iron rod set.


THENCE, S 85°-13'-19" W, a distance of 287.00 feet to a MAG nail set, passing a 5/8 inch iron rod set at 267.00 feet.

THENCE, with west line of Virginia Military Survey 3325 and the center-line of Township Road 126 (40 feet wide), N 4°-46'-41" W, a distance of 373.88 feet to the point of beginning.

Containing 5.743 acres, of which 1.134 acres are within the highway rights-of-way.

The basis for bearings is the north line of Virginia Military Survey 3325, being N 85°-48'-31" E, and all other bearings are from angles and distances measured in a field survey by Lee Surveying and Mapping Co., Inc. on December 17, 2001.

Description prepared by:


Jeffrey I. Lee
Professional Surveyor 6359
December 17, 2001



ORIGINAL STAMP IN GREEN

L-3282



Received 12-28-01 original

Lee Surveying and Mapping Co., Inc.

Land Surveys • Topography • Subdivisions • Construction Layout

117 N. Madriver St.
Bellefontaine OH 43311



Phone: (937) 593-7335
Fax: (937) 593-7444

WALKER 8.893 ACRES TRACT B

Lying in Virginia Military Survey 3325, Rushcreek Township, Logan County, Ohio.

Being out of the Julianna M. Walker original 261.096 acre tract as deeded and described in Official Record 258, Page 227, Tract I of the Logan County Records of Deeds and being more particularly described as follows:

Beginning at a MAG nail found on the northwest corner of Virginia Military Survey 3325 at the intersection of the center-lines of Township Road 126 and Ohio Route 47 on Ohio Route 47 center-line station 1114+67.3 (Logan County Engineer's file L-49).

THENCE, with the west line of Virginia Military Survey 3325 and the center-line of Township Road 126 (40 feet wide), S 4°-46'-41" E, a distance of 373.88 feet to a MAG nail set at the TRUE POINT OF BEGINNING.

THENCE, N 85°-13'-19" E, a distance of 287.00 feet to a 5/8 inch iron rod set, passing a 5/8 inch iron rod set at 20.00 feet.

THENCE, S 4°-46'-41" E, a distance of 323.48 feet to a 5/8 inch iron rod set.

THENCE, N 87°-33'-55" E, a distance of 133.11 feet to a 5/8 inch iron rod set.

THENCE, S 4°-46'-41" E, a distance of 696.67 feet to a 5/8 inch iron rod set.

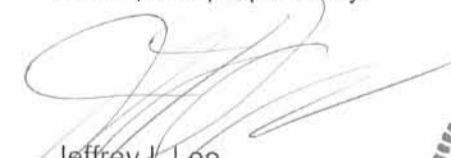
THENCE, S 85°-13'-19" W, a distance of 420.00 feet to a MAG nail set, passing 5/8 inch iron rods set at 129.50 feet and at 400.00 feet.

THENCE, with the west line of Virginia Military Survey 3325 and the center-line of Township 126, N 4°-46'-41" W, a distance of 1025.59 feet to the point of beginning.

Containing 8.893 acres, of which 0.471 acre is within the highway right-of-way.

The basis for bearings is the north line of Virginia Military Survey 3325, being N 85°-48'-31" E, and all other bearings are from angles and distances measured in a field survey by Lee Surveying and Mapping Co., Inc. on December 17, 2001.

Description prepared by:


Jeffrey I. Lee
Professional Surveyor 6359
December 17, 2001



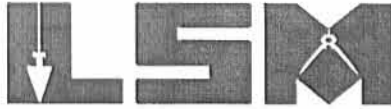
INDEXED ON MAP
56524D-2

Received 12-28-01 original

Lee Surveying and Mapping Co., Inc.

Land Surveys • Topography • Subdivisions • Construction Layout

117 N. Madriver St.
Bellefontaine OH 43311



Phone: (937) 593-7335
Fax: (937) 593-7444

WALKER 5.002 ACRES TRACT C

Lying in Virginia Military Survey 3325, Rushcreek Township, Logan County, Ohio.

Being out of the Julianna M. Walker original 261.096 acre tract as deeded and described in Official Record 258, Page 227, Tract I of the Logan County Records of Deeds and being more particularly described as follows:

Beginning at a MAG nail found on the northwest corner of Virginia Military Survey 3325 at the intersection of the center-lines of Township Road 126 and Ohio Route 47 on Ohio Route 47 center-line station 1114+67.3 (Logan County Engineer's file L-49).

THENCE, with the west line of Virginia Military Survey 3325 and the center-line of Township Road 126 (40 feet wide), S 4°-46'-41" E, a distance of 1399.47 feet to a MAG nail set at the TRUE POINT OF BEGINNING.

THENCE, N 85°-13'-19" E, a distance of 290.50 feet to a 5/8 inch iron rod set, passing a 5/8 inch iron rod set at 20.00 feet.

THENCE, S 4°-46'-41" E, a distance of 750.00 feet to a 5/8 inch iron rod set.


THENCE, S 85°-13'-19" W, a distance of 290.50 feet to a MAG nail set, passing a 5/8 inch iron rod set at 270.50 feet.

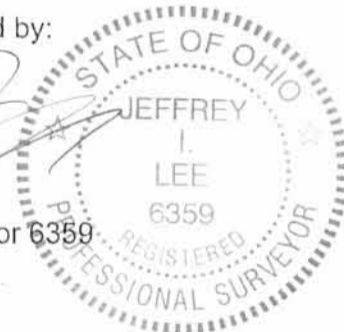
THENCE, with the west line of Virginia Military Survey 3325 and the center-line of Township 126, N 4°-46'-41" W, a distance of 750.00 feet to the point of beginning.

Containing 5.002 acres, of which 0.344 acre is within the highway right-of-way.

The basis for bearings is the north line of Virginia Military Survey 3325, being N 85°-48'-31" E, and all other bearings are from angles and distances measured in a field survey by Lee Surveying and Mapping Co., Inc. on December 17, 2001.

Description prepared by:


Jeffrey J. Lee
Professional Surveyor 6359
December 17, 2001



L-3282

ORIGINAL STAMP IN GREEN

INDEXED ON MAP
5652403

Received 12-23-01 original

Lee Surveying and Mapping Co., Inc.

Land Surveys • Topography • Subdivisions • Construction Layout

117 N. Madriver St.
Bellefontaine OH 43311



Phone: (937) 593-7335
Fax: (937) 593-7444

WALKER 6.253 ACRES TRACT D

Lying in Virginia Military Survey 3325, Rushcreek and Jefferson Townships, Logan County, Ohio.

Being out of the Julianna M. Walker original 261.096 acre tract as deeded and described in Official Record 258, Page 227, Tract I of the Logan County Records of Deeds and being more particularly described as follows:

Beginning at a MAG nail found on the northwest corner of Virginia Military Survey 3325 at the intersection of the center-lines of Township Road 126 and Ohio Route 47 on Ohio Route 47 center-line station 1114+67.3 (Logan County Engineer's file L-49).

THENCE, with the west line of Virginia Military Survey 3325 and the center-line of Township Road 126 (40 feet wide), S 4°-46'-41" E, a distance of 2149.47 feet to a MAG nail set at the TRUE POINT OF BEGINNING.

THENCE, N 85°-13'-19" E, a distance of 290.50 feet to a 5/8 inch iron rod set, passing a 5/8 inch iron rod set at 20.00 feet.

THENCE, S 4°-46'-41" E, a distance of 1088.74 feet to a 5/8 inch iron rod set.

THENCE, N 48°-38'-36" W, a distance of 419.21 feet to a MAG nail set, passing a 5/8 inch iron rod set at 390.35 feet.

THENCE, with the west line of Virginia Military Survey 3325 and the center-line of Township 126, N 4°-46'-41" W, a distance of 768.50 feet to the point of beginning.

786.50

Containing 6.253 acres, of which 0.366 acre is within the highway right-of-way, 1.860 acres are in Rushcreek Township and 4.393 acres are in Jefferson Township.

The basis for bearings is the north line of Virginia Military Survey 3325, being N 85°-48'-31" E, and all other bearings are from angles and distances measured in a field survey by Lee Surveying and Mapping Co., Inc. on December 17, 2001.

Description prepared by:

[Signature]
Jeffrey I. Lee
Professional Surveyor 6359
December 17, 2001



ORIGINAL STAMP IN GREEN

L-3282

*SEE SURVEYOR'S
AFFIDAVIT
ATTACHED*

INDEXED ON MAP
5652404

PROFESSIONAL SURVEYOR'S AFFIDAVIT

COUNTY RECORDER ss:

Jeffrey I. Lee, being first duly sworn, deposes and says that he is a Registered Professional Surveyor under the laws of the State of Ohio, being Professional Surveyor No. 6359 and that he is making this affidavit for the purposes of correcting the description to Exhibit "D" to certain real estate situated in Rushcreek and Jefferson Townships, Logan County, Ohio, presently owned by Black Hoof, LLC, an Ohio Limited Liability Company by virtue of a General Warranty Deed recorded in Official Record Volume 575, Page 232 of the Logan County Records of Deeds.

The corrected description being as follows with corrections underlined:

SEE ATTACHED EXHIBIT "D"

This affidavit is made in compliance with Revised Code of Ohio Sec. 5301.252 and particularly to show an affidavit of a professional surveyor to reconcile conflicts and ambiguities in descriptions of land in recorded instruments as stated in paragraph B(5) of Section 5301.252. Under Sec. 5301.252(C) the County Recorder shall receive and cause such affidavit to be recorded as deeds are recorded.

SIGNED AND ACKNOWLEDGED IN THE PRESENCE OF:

Cindy Cushman
Cindy Cushman

Brandi M. Sampson
Brandi M. Sampson
STATE OF OHIO,
LOGAN COUNTY, SS:

Jeffrey I. Lee
Jeffrey I. Lee
Professional Surveyor No. 6359

BE IT REMEMBERED, that on this 26th day of June, 2002, before me, the subscriber, a Notary Public in and for said County and State, personally came the above named Jeffrey I. Lee the maker of the foregoing Affidavit, and acknowledged the signing of the same to be his voluntary act and deed, for the uses and purposes therein mentioned.

IN TESTIMONY WHEREOF, I have hereunto subscribed my name and affixed my official seal, on the day and year last aforesaid.



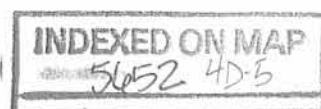
Cindy Cushman
CINDY CUSHMAN
Notary Public, State of Ohio
My Comm. Expires Nov. 13, 2008

RECORDER.

Please cross reference to Official Record Volume 575, Page 232 in the Abstract of the Deed Records of Logan County, Ohio.

This instrument was prepared by Jeffrey I. Lee.

L-3282



Received 6-26-02 OK JAL

Lee Surveying and Mapping Co., Inc.

Land Surveys • Topography • Subdivisions • Construction Layout

117 N. Madriver St.
Bellefontaine OH 43311



Phone: (937) 593-7335
Fax: (937) 593-7444

WALKER 6.253 ACRES TRACT D

Lying in Virginia Military Survey 3325, Rushcreek and Jefferson Townships, Logan County, Ohio.

Being out of the Julianna M. Walker original 261.096 acre tract as deeded and described in Official Record 258, Page 227, Tract I of the Logan County Records of Deeds and being more particularly described as follows:

Beginning at a MAG nail found on the northwest corner of Virginia Military Survey 3325 at the intersection of the center-lines of Township Road 126 and Ohio Route 47 on Ohio Route 47 center-line station 1114+67.3 (Logan County Engineer's file L-49).

THENCE, with the west line of Virginia Military Survey 3325 and the center-line of Township Road 126 (40 feet wide), S 4°-46'-41" E, a distance of 2149.47 feet to a MAG nail set at the TRUE POINT OF BEGINNING.

THENCE, N 85°-13'-19" E, a distance of 290.50 feet to a 5/8 inch iron rod set, passing a 5/8 inch iron rod set at 20.00 feet.

THENCE, S 4°-46'-41" E, a distance of 1088.74 feet to a 5/8 inch iron rod set.

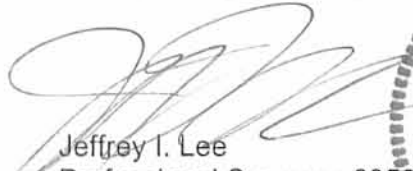
THENCE, N 48°-38'-36" W, a distance of 419.21 feet to a MAG nail set, passing a 5/8 inch iron rod set at 390.35 feet.

THENCE, with the west line of Virginia Military Survey 3325 and the center-line of Township 126, N 4°-46'-41" W, a distance of 786.50 feet to the point of beginning.

Containing 6.253 acres, of which 0.366 acre is within the highway right-of-way, 1.860 acres are in Rushcreek Township and 4.393 acres are in Jefferson Township.

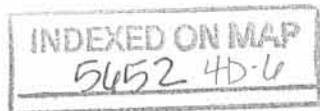
The basis for bearings is the north line of Virginia Military Survey 3325, being N 85°-48'-31" E, and all other bearings are from angles and distances measured in a field survey by Lee Surveying and Mapping Co., Inc. on December 17, 2001.

Description prepared by:


Jeffrey I. Lee
Professional Surveyor 6359
December 17, 2001
Revised June 25, 2002



L-3282

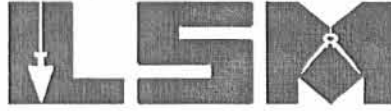


Received 12-28-01 OK JEL

Lee Surveying and Mapping Co., Inc.

Land Surveys • Topography • Subdivisions • Construction Layout

117 N. Madriver St.
Bellefontaine OH 43311



Phone: (937) 593-7335
Fax: (937) 593-7444

WALKER 5.908 ACRES TRACT E

Lying in Virginia Military Survey 3325, Jefferson Township, Logan County, Ohio.

Being out of the Julianna M. Walker original 261.096 acre tract as deeded and described in Official Record 258, Page 227, Tract I of the Logan County Records of Deeds and being more particularly described as follows:

Beginning at a MAG nail found on the northwest corner of Virginia Military Survey 3325 at the intersection of the center-lines of Township Road 126 and Ohio Route 47 on Ohio Route 47 center-line station 1114+67.3 (Logan County Engineer's file L-49).

THENCE, with the west line of Virginia Military Survey 3325 and the center-line of Township Road 126 (40 feet wide), S 4°-46'-41" E, a distance of 2935.97 feet to a MAG nail set at the TRUE POINT OF BEGINNING.

THENCE, S 48°-38'-36" E, a distance of 419.21 feet to a 5/8 inch iron rod set, passing a 5/8 inch iron rod set at 28.86 feet.

THENCE, S 4°-46'-41" E, a distance of 734.76 feet to a 5/8 inch iron rod set.


THENCE, S 85°-13'-19" W, a distance of 290.50 feet to a MAG nail set, passing a 5/8 inch iron rod set at 270.50 feet.

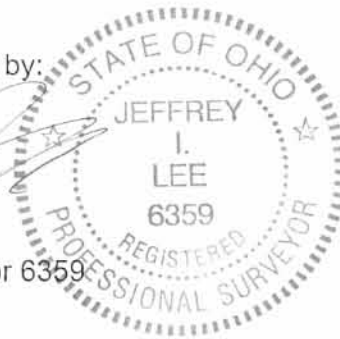
THENCE, with the west line of Virginia Military Survey 3325 and the center-line of Township 126, N 4°-46'-41" W, a distance of 1037.00 feet to the point of beginning.

Containing 5.908 acres, of which 0.471 acre is within the highway right-of-way.

The basis for bearings is the north line of Virginia Military Survey 3325, being N 85°-48'-31" E, and all other bearings are from angles and distances measured in a field survey by Lee Surveying and Mapping Co., Inc. on December 17, 2001.

Description prepared by:


Jeffrey I. Lee
Professional Surveyor 6359
December 17, 2001



ORIGINAL STAMP IN GREEN

L-3282



Received 12-28-01 OK JEN

Lee Surveying and Mapping Co., Inc.

Land Surveys • Topography • Subdivisions • Construction Layout

117 N. Madriver St.
Bellefontaine OH 43311



Phone: (937) 593-7335
Fax: (937) 593-7444

WALKER 5.002 ACRES TRACT F

Lying in Virginia Military Survey 3325, Jefferson Township, Logan County, Ohio.

Being out of the Julianna M. Walker original 261.096 acre tract as deeded and described in Official Record 258, Page 227, Tract I of the Logan County Records of Deeds and being more particularly described as follows:

Beginning at a MAG nail found on the northwest corner of Virginia Military Survey 3325 at the intersection of the center-lines of Township Road 126 and Ohio Route 47 on Ohio Route 47 center-line station 1114+67.3 (Logan County Engineer's file L-49).

THENCE, with the west line of Virginia Military Survey 3325 and the center-line of Township Road 126 (40 feet wide), S 4°-46'-41" E, a distance of 3972.97 feet to a MAG nail set at the TRUE POINT OF BEGINNING.

THENCE, N 85°-13'-19" E, a distance of 290.50 feet to a 5/8 inch iron rod set, passing a 5/8 inch iron rod set at 20.00 feet.

THENCE, S 4°-46'-41" E, a distance of 750.00 feet to a 5/8 inch iron rod set.

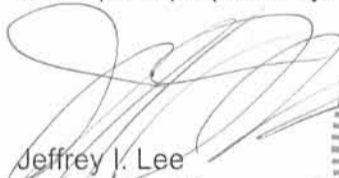
THENCE, S 85°-13'-19" W, a distance of 290.50 feet to a MAG nail set, passing a 5/8 inch iron rod set at 270.50 feet.

THENCE, with the west line of Virginia Military Survey 3325 and the center-line of Township 126, N 4°-46'-41" W, a distance of 750.00 feet to the point of beginning.

Containing 5.002 acres, of which 0.344 acre is within the highway right-of-way.

The basis for bearings is the north line of Virginia Military Survey 3325, being N 85°-48'-31" E, and all other bearings are from angles and distances measured in a field survey by Lee Surveying and Mapping Co., Inc. on December 17, 2001.

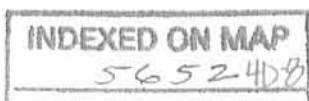
Description prepared by:


Jeffrey I. Lee
Professional Surveyor 6359
December 17, 2001



L-3282

ORIGINAL STAMP IN GREEN



Received 12-28-01 in green

Lee Surveying and Mapping Co., Inc.

Land Surveys • Topography • Subdivisions • Construction Layout

117 N. Madriver St.
Bellefontaine OH 43311



Phone: (937) 593-7335
Fax: (937) 593-7444

WALKER 5.518 ACRES TRACT G

Lying in Virginia Military Survey 3325, Jefferson Township, Logan County, Ohio.

Being out of the Julianna M. Walker original 261.096 acre tract as deeded and described in Official Record 258, Page 227, Tract I of the Logan County Records of Deeds and being more particularly described as follows:

Beginning at a MAG nail found on the northwest corner of Virginia Military Survey 3325 at the intersection of the center-lines of Township Road 126 and Ohio Route 47 on Ohio Route 47 center-line station 1114+67.3 (Logan County Engineer's file L-49).

THENCE, with the west line of Virginia Military Survey 3325 and the center-line of Township Road 126 (40 feet wide), S 4°-46'-41" E, a distance of 4722.97 feet to a MAG nail set at the TRUE POINT OF BEGINNING.

THENCE, N 85°-13'-19" E, a distance of 290.50 feet to a 5/8 inch iron rod set, passing a 5/8 inch iron rod set at 20.00 feet.

THENCE, S 4°-46'-41" E, a distance of 150.00 feet to a 5/8 inch iron rod set.

THENCE, N 85°-13'-19" E, a distance of 443.99 feet to a 5/8 inch iron rod set.

THENCE, S 5°-35'-38" E, a distance of 262.99 feet to a railroad spike set, passing a 5/8 inch iron rod set at 242.99 feet.

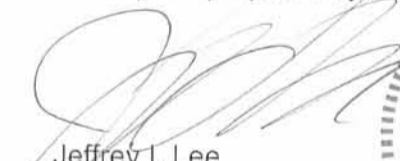
THENCE, with the center-line of Township Road 127 (40 feet wide), S 84°-33'-34" W, a distance of 738.28 feet to a railroad spike found.

THENCE, with the west line of Virginia Military Survey 3325 and the center-line of Township 126, N 4°-46'-41" W, a distance of 421.50 feet to the point of beginning.

Containing 5.518 acres, of which 0.523 acre is within the highway right-of-way.

The basis for bearings is the north line of Virginia Military Survey 3325, being N 85°-48'-31" E, and all other bearings are from angles and distances measured in a field survey by Lee Surveying and Mapping Co., Inc. on December 17, 2001.

Description prepared by:


Jeffrey I. Lee
Professional Surveyor 6359
December 17, 2001

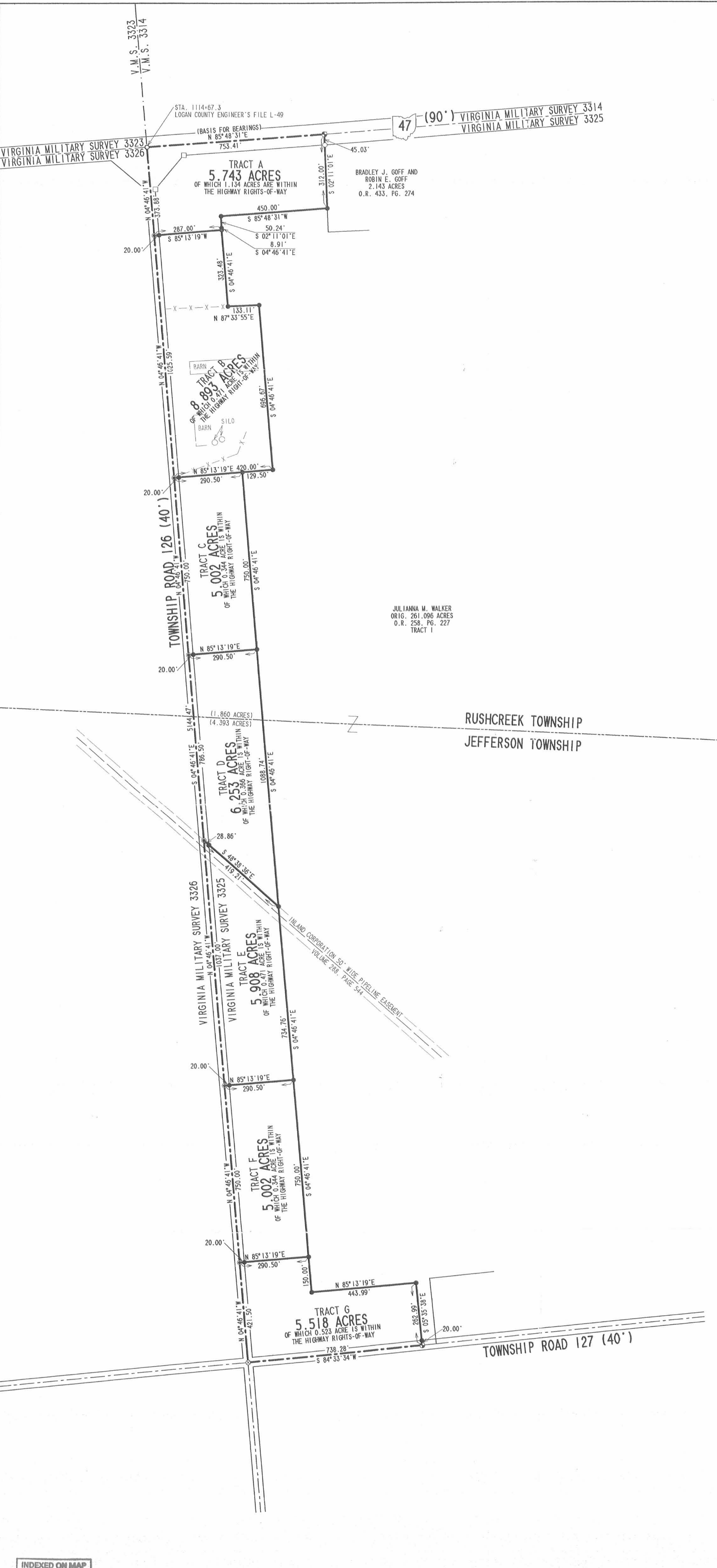


L-3282

ORIGINAL STAMP IN GREEN



459



SCALE
200
FEET TO 0 AN INCH

LEGEND

- 5/8 INCH IRON ROD SET
- 5/8 INCH IRON ROD FOUND
- ⊙ RAILROAD SPIKE SET
- ⊙ RAILROAD SPIKE FOUND
- ⊙ MAG NAIL SET
- MAG NAIL FOUND
- CONCRETE RIGHT-OF-WAY MONUMENT FOUND

SURVEY OF SEVEN TRACTS OUT OF THE JULIANNA M. WALKER ORIGINAL 261.096 ACRE TRACT OFFICIAL RECORD 258, PAGE 227, TRACT I VIRGINIA MILITARY SURVEY 3325 RUSHCREEK AND JEFFERSON TOWNSHIPS LOGAN COUNTY, OHIO



SURVEYED BY:
Jeffrey L. Lee
JEFFREY L. LEE
PROFESSIONAL SURVEYOR 6359
DECEMBER 17, 2001

COPYRIGHT 2001 BY:
LEE SURVEYING & MAPPING CO., INC.
117 North Madriver Street
BELLEFONTAINE, OHIO 43311
(937) 593-7335

D 407 CARLLOTS
LOGANRUN.DAT

L-3282-1

INDEXED ON MAP
56.72 4p