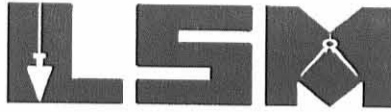


REC'D 4-22-02 8M OK

# Lee Surveying and Mapping Co., Inc.

Land Surveys • Topography • Subdivisions • Construction Layout

117 N. Madriver St.  
Bellefontaine OH 43311



Phone: (937) 593-7335  
Fax: (937) 593-7444

## BRADLEY 0.734 ACRE

Lying in Virginia Military Survey 3439, Jefferson Township, Logan County, Ohio.

Being out of the Paul E. Bradley, Charles A. Miller, Otto A. Lewis and Lucille Lewis original 105 acre tract as deeded and described in Volume 300, Page 455 of the Logan County Records of Deeds and being more particularly described as follows:

Beginning at a 5/8 inch iron rod found at an angle in the center-line of County Highway 25 on center-line station 14+62.0 (Field Book 575, Pg. 29, Logan County Engineer's files).

THENCE, with the center-line of County Highway 25 (60 feet wide), N 9°-04'-00" W, a distance of 465.83 feet to a railroad spike set at the TRUE POINT OF BEGINNING.

THENCE, with the center-line of County Highway 25, N 9°-04'-00" W, a distance of 30.69 feet to a MAG nail set.

THENCE, N 83°-47'-00" E, a distance of 579.33 feet to a 5/8 inch iron rod set, passing a 5/8 inch iron rod set at 30.04 feet.

THENCE, S 6°-13'-00" E, a distance of 495.91 feet to a 5/8 inch iron rod set.

THENCE, with the north line of the Steven M. Williams 1.360 acre tract (O.R. 141, Pg. 155, Tract II), S 83°-47'-00" W, a distance of 30.65 feet to a 5/8 inch iron rod set.

THENCE, with the east line of the Dwayne Bradley 5.092 acre tract (Vol. 401, Pg. 383) and the P. Dwayne Bradley 0.627 acre tract (O.R. 290, Pg. 681), N 6°-13'-00" W, a distance of 465.26 feet to a 5/8 inch iron rod set.

THENCE, with the north line of the 0.627 acre tract, S 83°-47'-00" W, a distance of 547.16 feet to the point of beginning, passing a 5/8 inch iron rod set at 517.12 feet.

Containing 0.734 acre, of which 0.021 acre is within the highway right-of-way.

The basis for bearings is the center-line of County Highway 25 north of station 14+62.0, being N 9°-04'-00" W, and all other bearings are from angles and distances measured in a field survey by Lee Surveying and Mapping Co., Inc. on January 30, 1996 and April 16, 2002.

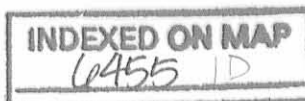
Description prepared by:

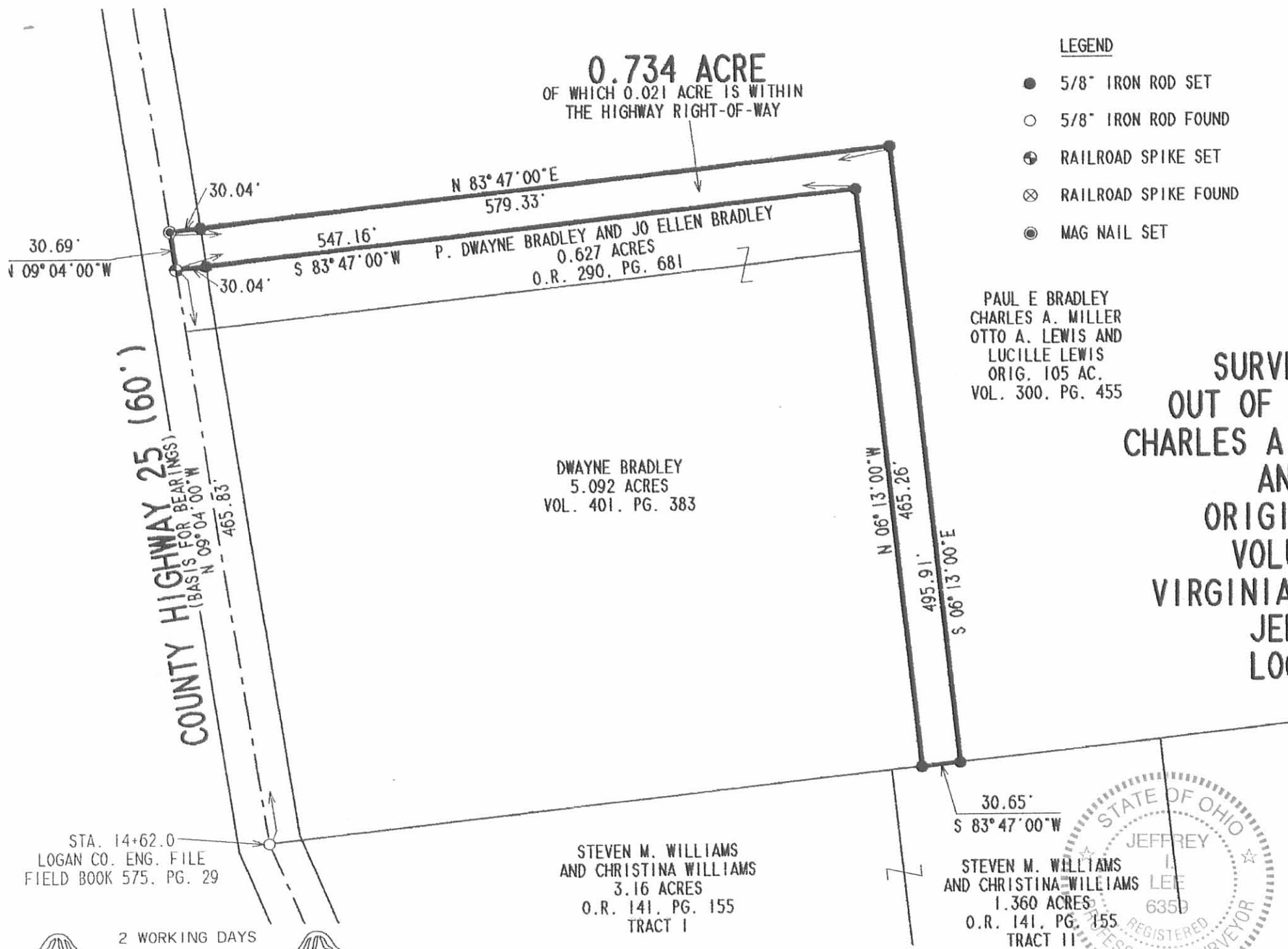


ORIGINAL STAMP IN GREEN

*Jeffrey I. Lee*  
Jeffrey I. Lee  
Professional Surveyor 6359  
April 18, 2002

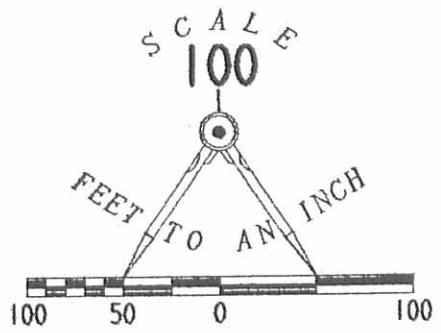
L-601





**0.734 ACRE**  
OF WHICH 0.021 ACRE IS WITHIN  
THE HIGHWAY RIGHT-OF-WAY

- LEGEND**
- 5/8" IRON ROD SET
  - 5/8" IRON ROD FOUND
  - ⊕ RAILROAD SPIKE SET
  - ⊗ RAILROAD SPIKE FOUND
  - ⦿ MAG NAIL SET



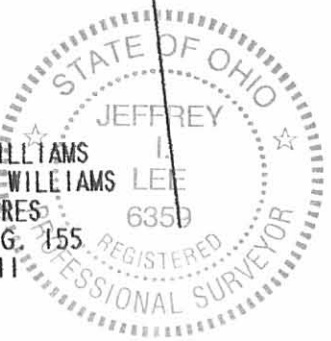
PAUL E BRADLEY  
CHARLES A. MILLER  
OTTO A. LEWIS AND  
LUCILLE LEWIS  
ORIG. 105 AC.  
VOL. 300. PG. 455

**SURVEY OF 0.734 ACRES  
OUT OF THE PAUL E. BRADLEY  
CHARLES A. MILLER, OTTO A. LEWIS  
AND LUCILLE LEWIS  
ORIGINAL 105 ACRE TRACT  
VOLUME 300. PAGE 455  
VIRGINIA MILITARY SURVEY 3439  
JEFFERSON TOWNSHIP  
LOGAN COUNTY, OHIO**

DWAYNE BRADLEY  
5.092 ACRES  
VOL. 401. PG. 383

STEVEN M. WILLIAMS  
AND CHRISTINA WILLIAMS  
3.16 ACRES  
O.R. 141. PG. 155  
TRACT I

30.65'  
S 83° 47' 00" W  
STEVEN M. WILLIAMS  
AND CHRISTINA WILLIAMS  
1.360 ACRES  
O.R. 141. PG. 155  
TRACT II



SURVEYED BY:  
*[Signature]*  
JEFFREY I. LEE  
PROFESSIONAL SURVEYOR 6359  
JANUARY 30, 1996  
APRIL 16, 2002

COPYRIGHT 2002 BY:  
**LEE SURVEYING & MAPPING CO., INC.**  
117 North Madriver Street  
BELLEFONTAINE, OHIO 43311  
(937) 593-7335

STA. 14+62.0  
LOGAN CO. ENG. FILE  
FIELD BOOK 575. PG. 29

2 WORKING DAYS  
**BEFORE YOU DIG**  
CALL TOLL FREE **800-362-2764**  
OHIO UTILITIES PROTECTION SERVICE.

REFERENCES:  
LOGAN COUNTY ENGINEER'S FILES:  
R-5276  
L-24

INDEXED ON MAP  
6455 IP

ORIGINAL STAMP IN GREEN

D 273 DBRADLY2 L-601-4

REV'D 4-22-02 SWM/OK

# Lee Surveying and Mapping Co.



Farm Surveys • Lot Surveys • Topography • Subdivisions • Construction Layout

855 EAST SANDUSKY AVENUE  
BELLEFONTAINE, OHIO 43311

(513) 593-5780

CLAYTON M. LEE, P.S.  
JEFFREY I. LEE, P.S.

## PAUL BRADLEY TO DWAYNE BRADLEY

Lying in V.M.S. 3439, Jefferson Township, Logan County, Ohio.

Being out of that 105 acre tract lying in the name of Paul Bradley (Volume 300, Page 456) and, more particularly described as follows:

Beginning at a 'IK' nail over an iron rod found on the center-line of County Road 25 and lying on the south line of grantor's said 105 acre tract and designated as being Station 14+62 in the Logan County Engineer's records.

THENCE, with the center-line of County Road 25, N 9°-04' W, a distance of 415.65 feet to a railroad spike set for the northwest corner of this survey.

THENCE, parallel to the south line of said 105 acre tract, N 83°-47' E, a distance of 544.67 feet to an iron rod, passing an iron rod at 25.03 feet.

THENCE, at right angles, S 6°-13' E, a distance of 415.14 feet to an iron rod set on grantor's south property line. The same being the north line of a 10.03 acre tract (Volume 300, Page 441).

THENCE, with said north line, S 83°-47' W, a distance of 524.00 feet to the point of beginning. Containing 5.092 acres.

Last previous deed reference: Volume 300, Page 456.

Surveyed by:

Clayton M. Lee  
Reg. Surveyor No. 6181  
8-6-80



INDEXED ON MAP  
6455 2D

Found 1" Iron Rod  
28+50

V.M.S. 3441  
V.M.S. 3439

6456 2P

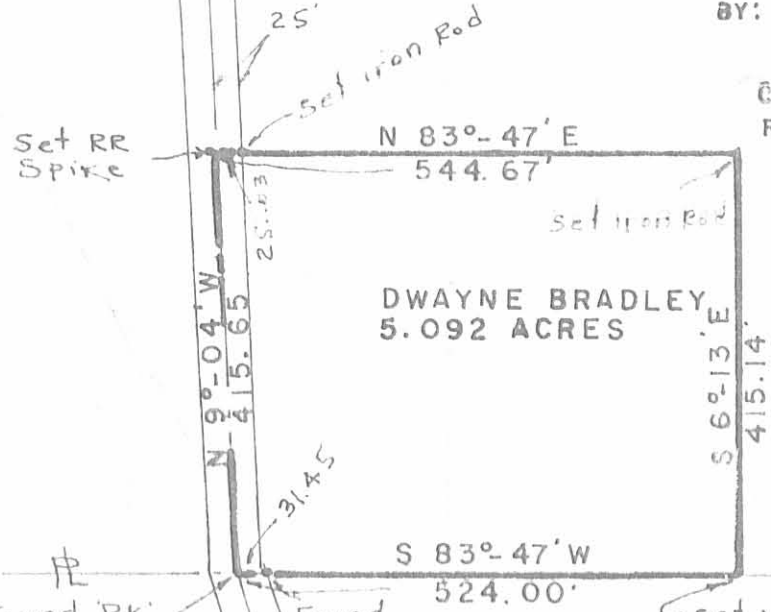
INDEXED ON MAP

PAUL BRADLEY  
VOL. 300, Pg. 456  
105.0 ACRES  
99.908 AC. Remaining

SURVEY OF 5.092 ACRES IN  
V.M.S. 3439, JEFFERSON TWP.  
LOGAN COUNTY, OHIO



SCALE ~ 1" = 200'



BY: Clayton M. Lee  
Clayton M. Lee  
Reg. No. 6181  
8-6-80



LEE SURVEYING & MAPPING CO.  
855 E. Sandusky Ave.  
BELLEFONTAINE, OHIO 43311  
(513) 593-5780

Found 'PK' OVER Iron 14+62

Found iron Rod

MICHAEL FERRY  
0.08 ACRES  
VOL. 365, Pg. 441

SCOTT EATES  
27.37 AC.  
Vol. 375, Pg. 28

REC'D 2-2-96 SUM OK ✓



# Lee Surveying and Mapping Co.



Farm Surveys • Lot Surveys • Topography • Subdivisions • Construction Layout

143 EAST COLUMBUS AVENUE  
BELLEFONTAINE, OHIO 43311

(513) 593-7335

JEFFREY I. LEE, P.S.

## PAUL E. BRADLEY 0.627 ACRE

Lying in Virginia Military Survey 3439, Jefferson Township, Logan County, Ohio.

Being out of the Paul E. Bradley original 105 acre tract as deeded and described in Volume 300, Page 455 of the Logan County Records of Deeds and being more particularly described as follows:

Beginning at a railroad spike found on the center-line of County Highway 25 at the northwest corner of the Dwayne Bradley 5.092 acre tract (Vol. 401, Pg. 383).

THENCE, with the center-line of County Highway 25, N 9°-04'-00" W, a distance of 50.06 feet to a railroad spike set.

THENCE, N 83°-47'-00" E, a distance of 547.16 feet to a 5/8 inch iron rod set.

THENCE, S 6°-13'-00" E, a distance of 50.00 feet to a 5/8 inch iron rod found.

THENCE, with the north line of the said 5.092 acre tract, S 83°-47'-00" W, a distance of 544.67 feet to the point of beginning.

Containing 0.627 acre of which 0.035 acre is within the highway right-of-way.

The basis for bearings is the center-line of County Highway 25 being N 9°-04'-00" W, and all other bearings are from angles and distances measured in a field survey by Lee Surveying and Mapping Co., Inc. on January 30, 1996.

Description prepared by:

Jeffrey I. Lee  
Professional Surveyor 6359  
February 1, 1996  
Revised February 2, 1996

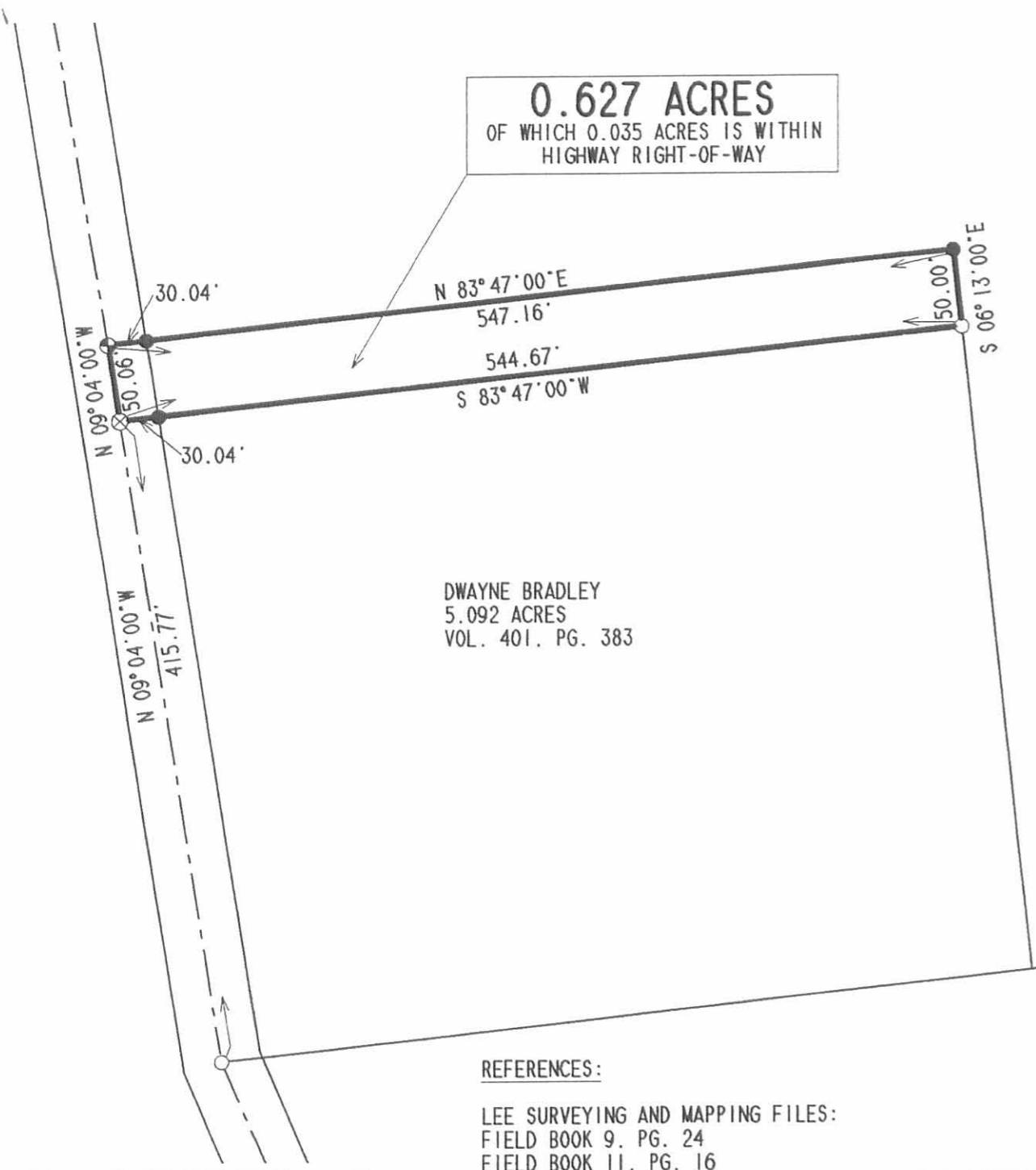


ORIGINAL STAMP IN GREEN

L 601

INDEXED ON MAP  
6455 3D

**0.627 ACRES**  
 OF WHICH 0.035 ACRES IS WITHIN  
 HIGHWAY RIGHT-OF-WAY

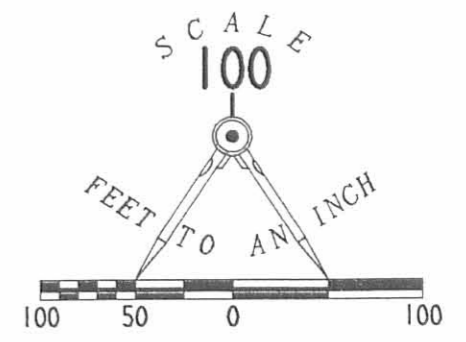


DWAYNE BRADLEY  
 5.092 ACRES  
 VOL. 401. PG. 383

PAUL E BRADLEY  
 ORIG. 105 AC.  
 VOL. 300. PG. 455

**LEGEND**

- 5/8" IRON ROD SET
- 5/8" IRON ROD FOUND
- ⊕ RAILROAD SPIKE SET
- ⊗ RAILROAD SPIKE FOUND



**SURVEY OF 0.627 ACRES  
 OUT OF THE PAUL E. BRADLEY  
 ORIGINAL 105 ACRE TRACT  
 VOLUME 300, PAGE 455  
 VIRGINIA MILITARY SURVEY 3439  
 JEFFERSON TOWNSHIP  
 LOGAN COUNTY, OHIO**

**REFERENCES:**

LEE SURVEYING AND MAPPING FILES:  
 FIELD BOOK 9, PG. 24  
 FIELD BOOK 11, PG. 16  
 L-601-5

LOGAN COUNTY ENGINEER'S FILES:  
 R-5276  
 L-24

INDEXED ON MAP  
 6455 3P



ORIGINAL STAMP IN GREEN

SURVEYED BY:

*Jeffrey I. Lee*  
 JEFFREY I. LEE  
 PROFESSIONAL SURVEYOR 6359  
 JANUARY 30, 1996  
 REVISED FEBRUARY 2, 1996

COPYRIGHT 1996 BY:  
**LEE SURVEYING & MAPPING CO., INC.**  
 143 East Columbus Avenue  
 BELLEFONTAINE, OHIO 43311  
 (513) 593-7335

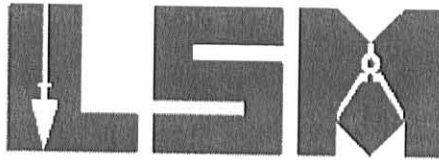
2 WORKING DAYS  
**BEFORE YOU DIG**  
 CALL TOLL FREE **800-362-2764**  
 OHIO UTILITIES PROTECTION SERVICE

DEED B-20-09 SUMOK

# Lee Surveying and Mapping Co., Inc.

Land Surveys • Topography • Subdivisions • Construction Layout

117 N. Madriver St.  
Bellefontaine OH 43311



Phone: (937) 593-7335  
Fax: (937) 593-7444  
surveys@lsminc.us

## BRADLEY, ETAL 12.930 ACRES

Lying in Virginia Military Survey 3439, Jefferson Township, Logan County, Ohio.

Being out of the Paul E. Bradley, Charles A. Miller and Otto A. Lewis and Lucille Lewis original 105 acre tract as deeded and described in Volume 300, Page 455 of the Logan County Records of Deeds and being more particularly described as follows:

Commencing on a 1 inch iron rod found on the north line of Virginia Military Survey 3439 on the center-line of County Highway 25 at Station 28+50 (Logan County Engineer's Field Book 575, Page 30).

THENCE, with the center-line of County Highway 25 (60 feet wide), S 08°-38'-20"E, a distance of 234.15 feet to a 1 inch iron rod found at the TRUE POINT OF BEGINNING.

THENCE, with the south line of the Robert E. Crockett, etal, Trustees, 7.888 acre tract (O.R. 937, Pg. 398, Parcel One), N 84°-27'-38"E, a distance of 1479.51 feet to a 5/8 inch iron rod found on the east line of Virginia Military Survey 3439.

THENCE, with the east line of Virginia Military Survey 3439 and the west line of the Charles A. Miller 75-1/2 acre tract (Vol. 313, Pg. 587), S 05°-23'-54"E, a distance of 381.41 feet to a 5/8 inch iron rod set.

THENCE, S 84°-17'-43"W, a distance of 1457.70 feet to a MAG nail set on the center-line of County Highway 25, passing a 5/8 inch iron rod set at 1427.66 feet.

THENCE, with the center-line of County Highway 25, N 08°-38'-20"W, a distance of 386.18 feet to the point of beginning.

Containing 12.930 acres, of which 0.266 acre is within the highway right-of-way.

The basis for bearings is the center-line of County Highway 25, being N 08°-38'-20"W, and all other bearings are from angles and distances measured in a field survey by Lee Surveying and Mapping Co., Inc. on August 14, 2009.



ORIGINAL STAMP IN GREEN

Description prepared by:

*William K. Bruce*

William K. Bruce  
Professional Surveyor 7437  
August 18, 2009

601089

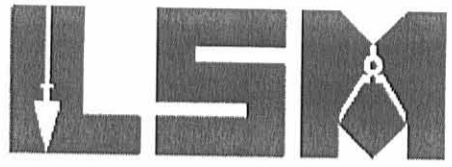
INDEXED ON MAP  
6455 4D-1

REVISED 8-20-09 SMY

# Lee Surveying and Mapping Co., Inc.

Land Surveys • Topography • Subdivisions • Construction Layout

117 N. Madriver St.  
Bellefontaine OH 43311



Phone: (937) 593-7335  
Fax: (937) 593-7444  
surveys@lsminc.us

## BRADLEY, ETAL 19.496 ACRES

Lying in Virginia Military Survey 3439, Jefferson Township, Logan County, Ohio.

Being out of the Paul E. Bradley, Charles A. Miller and Otto A. Lewis and Lucille Lewis original 105 acre tract as deeded and described in Volume 300, Page 455 of the Logan County Records of Deeds and being more particularly described as follows:

Commencing on a 1 inch iron rod found on the north line of Virginia Military Survey 3439 on the center-line of County Highway 25 at Station 28+50 (Logan County Engineer's Field Book 575, Page 30).

THENCE, with the center-line of County Highway 25 (60 feet wide), S 08°-38'-20"E, a distance of 620.33 feet to a MAG nail set at the TRUE POINT OF BEGINNING, passing a 1 inch iron rod found at 234.15 feet.

THENCE, N 84°-17'-43"E, a distance of 1457.70 feet to a 5/8 inch iron rod set on the east line of Virginia Military Survey 3439, passing a 5/8 inch iron rod set at 30.04 feet.

THENCE, with the east line of Virginia Military Survey 3439 and the west lines of the Charles A. Miller 75-1/2 acre tract (Vol. 313, Pg. 587) and Ronald S. Smith 194.14 acre tract (O.R. 208, Pg. 619), S 05°-23'-54"E, a distance of 764.95 feet to a pile of trees.

THENCE, with the north lines of the said 194.14 acre tract, the Scott Bates 27.37 acre tract (Vol. 375, Pg. 28) and the Michael D. Brown 1.360 acre tract (O.R. 761, Pg. 348, Tract II), S 84°-17'-59"W, a distance of 890.41 feet to a 5/8 inch iron rod found, passing a 5/8 inch iron rod set at 15.00 feet.

THENCE, with the east lines of the Dwayne Bradley 5.092 acre tract (Vol. 401, Pg. 383) and the P. Dwayne Bradley 0.627 acre tract (O.R. 290, Pg. 681), N 05°-47'-20"W, a distance of 465.26 feet to a 5/8 inch iron rod found.

THENCE, with the north line of the said 0.627 acre tract, S 84°-17'-43"W, a distance of 547.16 feet to a railroad spike found on the center-line of County Highway 25, passing a 5/8 inch iron rod found at 517.12 feet.

THENCE, with the center-line of County Highway 25, N 08°-38'-20"W, a distance of 300.00 feet to the point of beginning.

Containing 19.496 acres, of which 0.207 acre is within the highway right-of-way.

The basis for bearings is the center-line of County Highway 25, being N 08°-38'-20"W, and all other bearings are from angles and distances measured in a field survey by Lee Surveying and Mapping Co., Inc. on August 14, 2009.

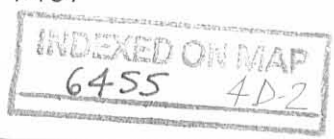


ORIGINAL STAMP IN GREEN

Description prepared by:

*William K. Bruce*

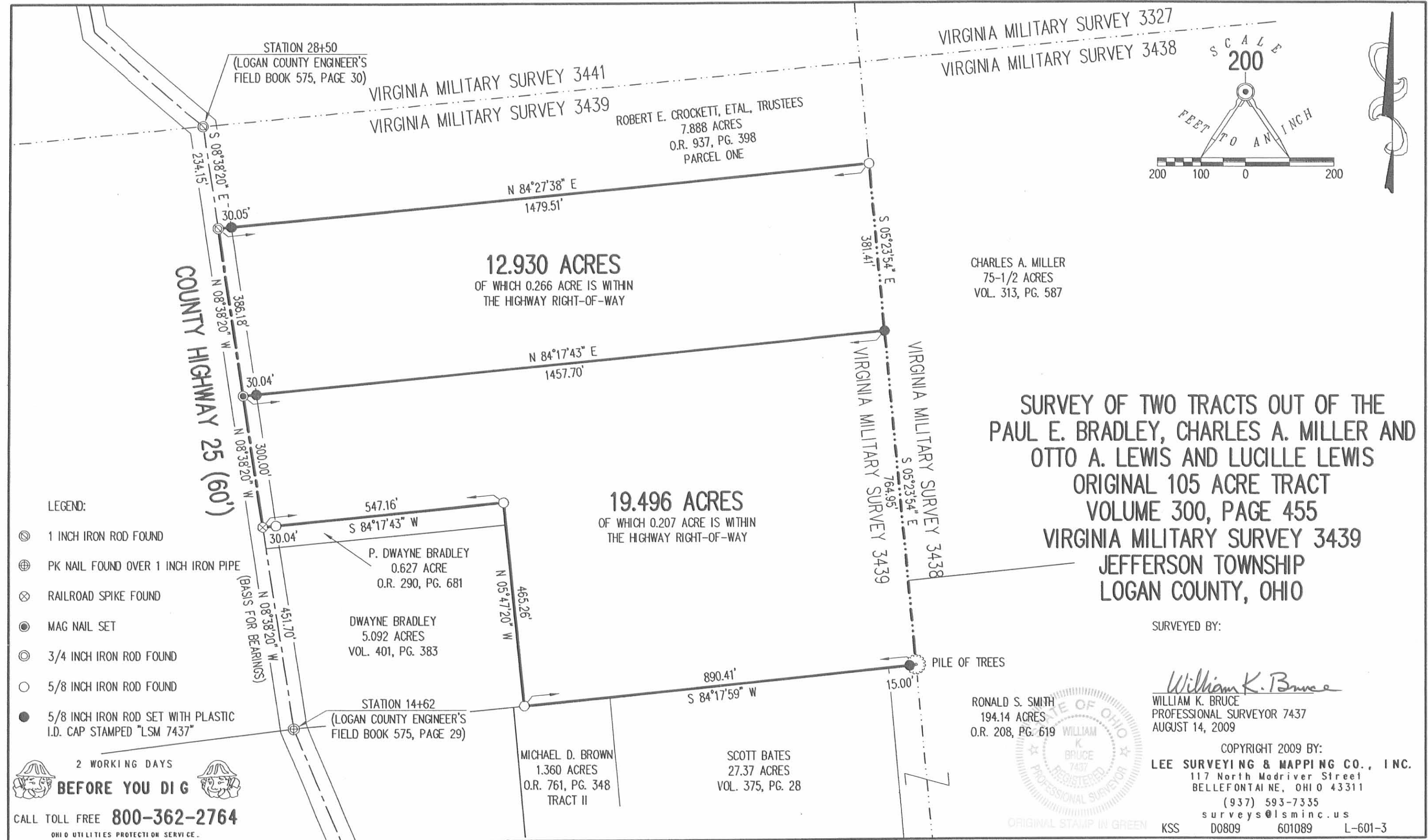
William K. Bruce  
Professional Surveyor 7437  
August 18, 2009



601089



REC'D 8-20-09. SMY OK



**SURVEY OF TWO TRACTS OUT OF THE PAUL E. BRADLEY, CHARLES A. MILLER AND OTTO A. LEWIS AND LUCILLE LEWIS ORIGINAL 105 ACRE TRACT VOLUME 300, PAGE 455 VIRGINIA MILITARY SURVEY 3439 JEFFERSON TOWNSHIP LOGAN COUNTY, OHIO**

WILLIAM K. BRUCE  
PROFESSIONAL SURVEYOR 7437  
AUGUST 14, 2009

COPYRIGHT 2009 BY:  
**LEE SURVEYING & MAPPING CO., INC.**  
117 North Madriver Street  
BELLEFONTAINE, OHIO 43311  
(937) 593-7335  
surveys@lsmcinc.us

KSS D0809 601089 L-601-3

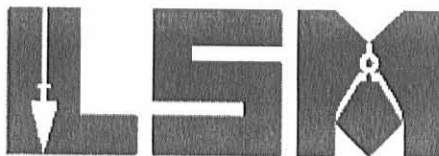
INDEXED ON MAP  
6455 4P

REC'D 8-20-09 SMJ OK

# Lee Surveying and Mapping Co., Inc.

Land Surveys • Topography • Subdivisions • Construction Layout

117 N. Madriver St.  
Bellefontaine OH 43311



Phone: (937) 593-7335  
Fax: (937) 593-7444  
surveys@lsminc.us

## BRADLEY, ETAL 60.333 ACRES

Lying in Virginia Military Survey 3439, Jefferson Township, Logan County, Ohio.

Being out of the Paul E. Bradley, Charles A. Miller and Otto A. Lewis and Lucille Lewis original 105 acre tract as deeded and described in Volume 300, Page 455 of the Logan County Records of Deeds and being more particularly described as follows:

Commencing on a 1 inch iron rod found on the north line of Virginia Military Survey 3439 on the center-line of County Highway 25 at Station 28+50 (Logan County Engineer's Field Book 575, Page 30).

THENCE, with the center-line of County Highway 25 (60 feet wide), S 08°-38'-19"E, a distance of 825.00 feet to a MAG nail set at the TRUE POINT OF BEGINNING.

THENCE, with the center-line of County Highway 25, S 08°-38'-19"E, a distance of 561.18 feet to a PK nail found over a 1 inch iron pipe at Station 14+62 (Logan County Engineer's Field Book 575, Pg. 29).

THENCE, with the north lines of the Ray T. Bodenmiller 1.517 acre tract (O.R. 314, Pg. 846), the Ray Bodenmiller 3.496 acre tract (O.R. 394, Pg. 521) and the Ray T. Bodenmiller 23.917 acre tract (O.R. 565, Pg. 16), S 84°-14'-03"W, a distance of 871.20 feet to a 1 inch iron pipe found, passing a 1 inch iron pipe found at 31.40 feet.

THENCE, with the north line of the said 23.917 acre tract, S 84°-59'-50"W, a distance of 818.79 feet to a 1 inch iron pipe found.

THENCE, with the north line of the Croson Properties Northwest, LLC, 76.697 acre tract (O.R. 925, Pg. 209), S 84°-49'-52"W, a distance of 420.93 feet to a 5/8 inch iron rod found.

THENCE, with the east line of the D. Lynn Hill 153.032 acre tract (Vol. 394, Pg. 639), N 06°-28'-32"W, a distance of 1382.47 feet to a 5/8 inch iron rod found on the north line of Virginia Military Survey 3439.

THENCE, with the north line of Virginia Military Survey 3439 and the south line of the Richard E. Allen, Trustee, 166.774 acre tract (O.R. 371, Pg. 481), N 84°-36'-08"E, a distance of 1741.20 feet to a 5/8 inch iron rod set.

THENCE, S 08°-38'-19"E, a distance of 825.00 feet to a 5/8 inch iron rod set.

THENCE, N 84°-36'-08"E, a distance of 317.31 feet to the point of beginning, passing a 5/8 inch iron rod set at 287.26 feet.

Containing 60.333 acres, of which 0.387 acre is within the highway right-of-way.

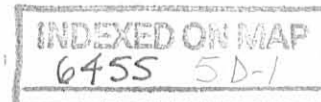
The basis for bearings is the center-line of County Highway 25, being S 08°-38'-19"E, and all other bearings are from angles and distances measured in a field survey by Lee Surveying and Mapping Co., Inc. on August 3, 2009, revised August 20, 2009.



Description prepared by:

*William K. Bruce*

William K. Bruce  
Professional Surveyor 7437  
August 20, 2009



601079A

RECID 8-20-09 smy ac

# Lee Surveying and Mapping Co., Inc.

Land Surveys • Topography • Subdivisions • Construction Layout

117 N. Madriver St.  
Bellefontaine OH 43311



Phone: (937) 593-7335  
Fax: (937) 593-7444  
surveys@lsminc.us

## BRADLEY, ETAL 6.000 ACRES

Lying in Virginia Military Survey 3439, Jefferson Township, Logan County, Ohio.

Being out of the Paul E. Bradley, Charles A. Miller and Otto A. Lewis and Lucille Lewis original 105 acre tract as deeded and described in Volume 300, Page 455 of the Logan County Records of Deeds and being more particularly described as follows:

Beginning on a 1 inch iron rod found on the north line of Virginia Military Survey 3439 on the center-line of County Highway 25 at Station 28+50 (Logan County Engineer's Field Book 575, Page 30).

THENCE, with the center-line of County Highway 25 (60 feet wide), S 08°-38'-19"E, a distance of 825.00 feet to a MAG nail set.

THENCE, S 84°-36'-08"W, a distance of 317.31 feet to a 5/8 inch iron rod set, passing a 5/8 inch iron rod set at 30.05 feet.

THENCE, N 08°-38'-19"W, a distance of 825.00 feet to a 5/8 inch iron rod set on the north line of Virginia Military Survey 3439.

THENCE, with the north line of Virginia Military Survey 3439 and the south line of the Richard E. Allen, Trustee, 166.774 acre tract (O.R. 371, Pg. 481), N 84°-36'-08"E, a distance of 317.31 feet to the point of beginning, passing a 5/8 inch iron rod found at 239.77 feet.

Containing 6.000 acres, of which 0.570 acre is within the highway right-of-way.

The basis for bearings is the center-line of County Highway 25, being S 08°-38'-19"E, and all other bearings are from angles and distances measured in a field survey by Lee Surveying and Mapping Co., Inc. on August 3, 2009, revised August 20, 2009.

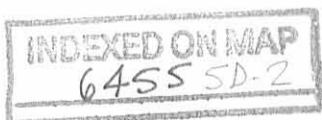


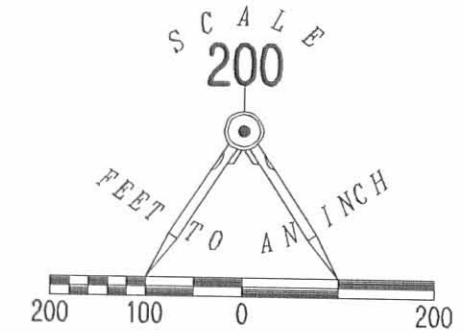
Description prepared by:

*William K. Bruce*

William K. Bruce  
Professional Surveyor 7437  
August 20, 2009

601079A





LEGEND:

- ⊙ 1 INCH IRON ROD FOUND
- ⊕ PK NAIL FOUND OVER 1 INCH IRON PIPE
- ⊙ 1 INCH IRON PIPE FOUND
- 5/8 INCH IRON ROD FOUND
- 5/8 INCH IRON ROD SET
- ⊙ MAG NAIL SET

RICHARD E. ALLEN, TRUSTEE  
166.774 ACRES  
O.R. 371, PG. 481

D. LYNN HILL  
153.032 ACRES  
VOL. 394, PG. 639

60.333 ACRES  
OF WHICH 0.387 ACRE IS WITHIN  
THE HIGHWAY RIGHT-OF-WAY

PAUL E. BRADLEY, CHARLES A. MILLER AND  
OTTO A. LEWIS AND LUCILLE LEWIS  
ORIGINAL 105 ACRES  
VOL. 300, PG. 455

CROSON PROPERTIES NORTHWEST, LLC  
76.697 ACRES  
O.R. 925, PG. 209

RAY T. BODENMILLER  
23.917 ACRES  
O.R. 565, PG. 16

RAY BODENMILLER  
3.496 ACRES  
O.R. 394, PG. 521

RAY T. BODENMILLER  
1.517 ACRES  
O.R. 314, PG. 846

SURVEY OF TWO TRACTS OUT OF THE  
PAUL E. BRADLEY, CHARLES A. MILLER AND  
OTTO A. LEWIS AND LUCILLE LEWIS  
ORIGINAL 105 ACRE TRACT  
VOLUME 300, PAGE 455  
VIRGINIA MILITARY SURVEY 3439  
JEFFERSON TOWNSHIP  
LOGAN COUNTY, OHIO

SURVEYED BY:

*William K. Bruce*  
WILLIAM K. BRUCE

PROFESSIONAL SURVEYOR 7437  
AUGUST 3, 2009  
REVISED AUGUST 20, 2009

COPYRIGHT 2009 BY:  
LEE SURVEYING & MAPPING CO., INC.  
117 North Madriver Street  
BELLEFONTAINE, OHIO 43311  
(937) 593-7335  
surveys@lsmcinc.us

KSS D0809 601079A L-601-2



2 WORKING DAYS  
**BEFORE YOU DIG**  
CALL TOLL FREE 800-362-2764  
OHIO UTILITIES PROTECTION SERVICE

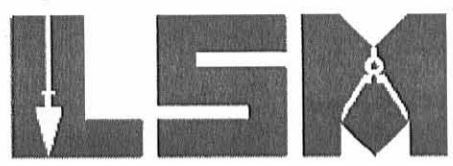
INDEXED ON MAP  
6455 SD

REC 115 5-12-10 SMY dk

# Lee Surveying and Mapping Co., Inc.

Land Surveys • Topography • Subdivisions • Construction Layout

117 N. Madriver St.  
Bellefontaine OH 43311



Phone: (937) 593-7335  
Fax: (937) 593-7444  
surveys@lsminc.us

## ALLEN, TRUSTEE 3.575 ACRES

Lying in Virginia Military Survey 3439, Jefferson Township, Logan County, Ohio.

Being out of the Richard E. Allen, Trustee 6.000 acre tract as deeded and described in Official Record 969, Page 268, Tract II of the Logan County Records of Deeds and being more particularly described as follows:

Commencing on a 1 inch iron rod found on the north line of Virginia Military Survey 3439 on the center-line of County Highway 25 at Station 28+50 (Logan County Engineer's Field Book 575, Pg. 30).

THENCE, with the center-line of County Highway 25 (60 feet wide), S 08°-38'-19"E, a distance of 210.85 feet to a MAG nail set at the TRUE POINT OF BEGINNING.

THENCE, with the center-line of County Highway 25, S 08°-38'-19"E, a distance of 614.15 feet to a MAG nail found.

THENCE, with a northerly line of the Richard E. Allen, Trustee 60.333 acre tract (O.R. 969, Pg. 268, Tract I), S 84°-36'-08"W, a distance of 271.76 feet to a 5/8 inch iron rod set, passing a 5/8 inch iron rod found at 30.05 feet.

THENCE, N 05°-18'-53"W, a distance of 613.17 feet to a 5/8 inch iron rod set.

THENCE, N 84°-36'-08"E, a distance of 236.15 feet to the point of beginning, passing a 5/8 inch iron rod set at 206.10 feet.

Containing 3.575 acres, of which 0.423 acre is within the highway right-of-way.

Property is subject to any and all previous easements and rights-of-way of record.

The basis for bearings is the center-line of County Highway 25, being S 08°-38'-19"E, and all other bearings are from angles and distances measured in a field survey by Lee Surveying and Mapping Co., Inc. on May 11, 2010.



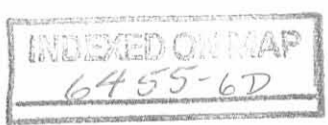
ORIGINAL STAMP IN GREEN

Description prepared by:

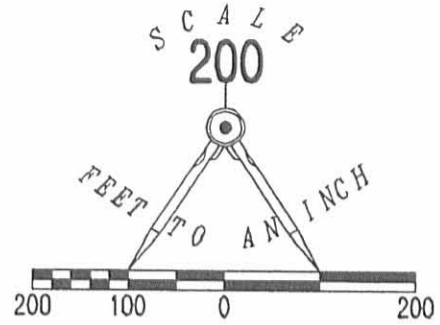
*William K. Bruce*

William K. Bruce  
Professional Surveyor 7437  
May 11, 2010

601510

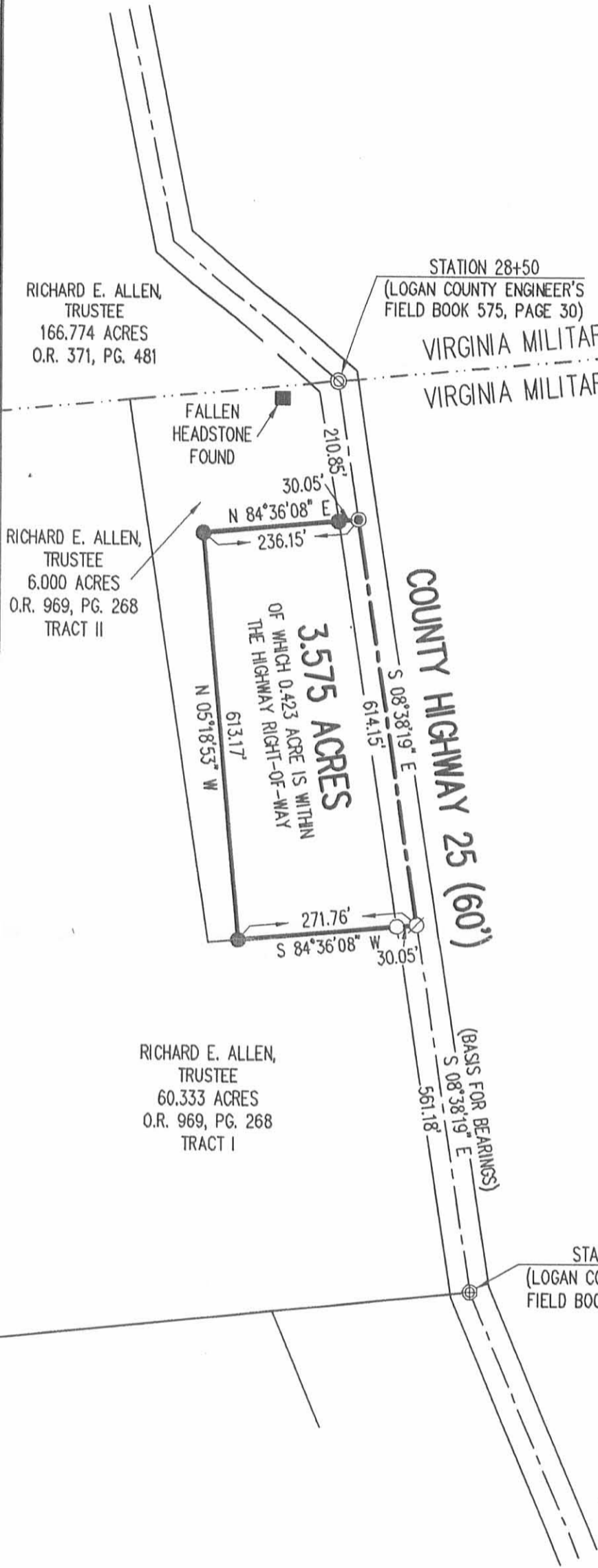


REC'D 5-12-10 SMM OK



LEGEND:

- ⊙ 1 INCH IRON ROD FOUND
- ⊕ PK NAIL FOUND OVER 1 INCH IRON PIPE
- 5/8 INCH IRON ROD FOUND
- 5/8 INCH IRON ROD SET WITH PLASTIC I.D. CAP STAMPED "LSM 7437"
- ⊙ MAG NAIL SET
- ⊘ MAG NAIL FOUND



**SURVEY OF 3.575 ACRES OUT OF THE  
RICHARD E. ALLEN, TRUSTEE  
6.000 ACRE TRACT  
OFFICIAL RECORD 969, PAGE 268  
TRACT II  
VIRGINIA MILITARY SURVEY 3439  
JEFFERSON TOWNSHIP  
LOGAN COUNTY, OHIO**

SURVEYED BY:

*William K. Bruce*

WILLIAM K. BRUCE  
PROFESSIONAL SURVEYOR 7437  
MAY 11, 2010



ORIGINAL STAMP IN GREEN

COPYRIGHT 2010 BY:  
**LEE SURVEYING & MAPPING CO., INC.**  
117 North Madriver Street  
BELLEFONTAINE, OHIO 43311  
(937) 593-7335  
surveys@lsminc.us

KSS D0510 601510 L-601-3

INDEXED ON MAP  
6755 6P



2 WORKING DAYS

**BEFORE YOU DIG**

CALL TOLL FREE **800-362-2764**

OHIO UTILITIES PROTECTION SERVICE.



**APPROVED**

6-24-16

# Lee Surveying and Mapping Co., Inc.

Land Surveys • Topography • Subdivisions • Construction Layout

117 N. Madriver St.  
Bellefontaine OH 43311



Phone: (937) 593-7335  
Fax: (937) 593-7444  
surveys@lsminc.us

## R.E. ALLEN FARMS, LLC 11.500 ACRES

Lying in Virginia Military Survey 3439, Jefferson Township, Logan County, Ohio.

Being out of the R.E. Allen Farms, LLC, 60.333 acre tract and 6.000 acre tract as deeded and described in Official Record 1089, Page 256, Parcel Two and Parcel Three of the Logan County Records of Deeds and being more particularly described as follows:

Commencing on a 1 inch iron rod found on the north line of Virginia Military Survey 3439 on the center-line of County Highway 25 at Station 28 + 50 (Logan County Engineer's Field Book 575, Page 30).

THENCE, with the center-line of County Highway 25 (60 feet wide), S 08°-38'-19"E, a distance of 204.51 feet to a MAG nail set at the TRUE POINT OF BEGINNING.

THENCE, with the center-line of County Highway 25, S 08°-38'-19"E, a distance of 639.99 feet to a MAG nail set.

THENCE, S 84°-35'-03"W, a distance of 292.40 feet to a 5/8 inch iron rod set, passing a 5/8 inch iron rod set at 30.05 feet.

THENCE, S 48°-59'-14"W, a distance of 112.89 feet to a 5/8 inch iron rod set.

THENCE, S 69°-33'-38"W, a distance of 96.82 feet to a 5/8 inch iron rod set.

THENCE, N 67°-53'-05"W, a distance of 322.26 feet to a 5/8 inch iron rod set.

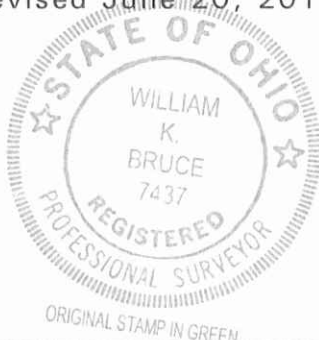
THENCE, N 08°-38'-19"W, a distance of 581.99 feet to a 5/8 inch iron rod set.

THENCE, N 84°-36'-08"E, a distance of 760.20 feet to the point of beginning, passing a 5/8 inch iron rod set at 730.15 feet.

Containing 11.500 acres, of which 0.441 acre is within the highway right-of-way.

Property is subject to any and all previous easements and rights-of-way of record.

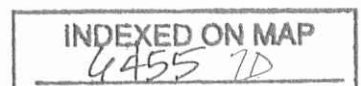
The basis for bearings is the center-line of County Highway 25, being S 08°-38'-19"E, and all other bearings are from angles and distances measured in a field survey by Lee Surveying and Mapping Co., Inc. on May 16, 2016, revised June 20, 2016.



Description prepared by:

*William K. Bruce*

William K. Bruce  
Professional Surveyor 7437  
June 20, 2016

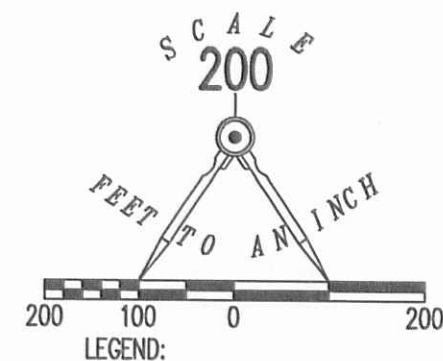
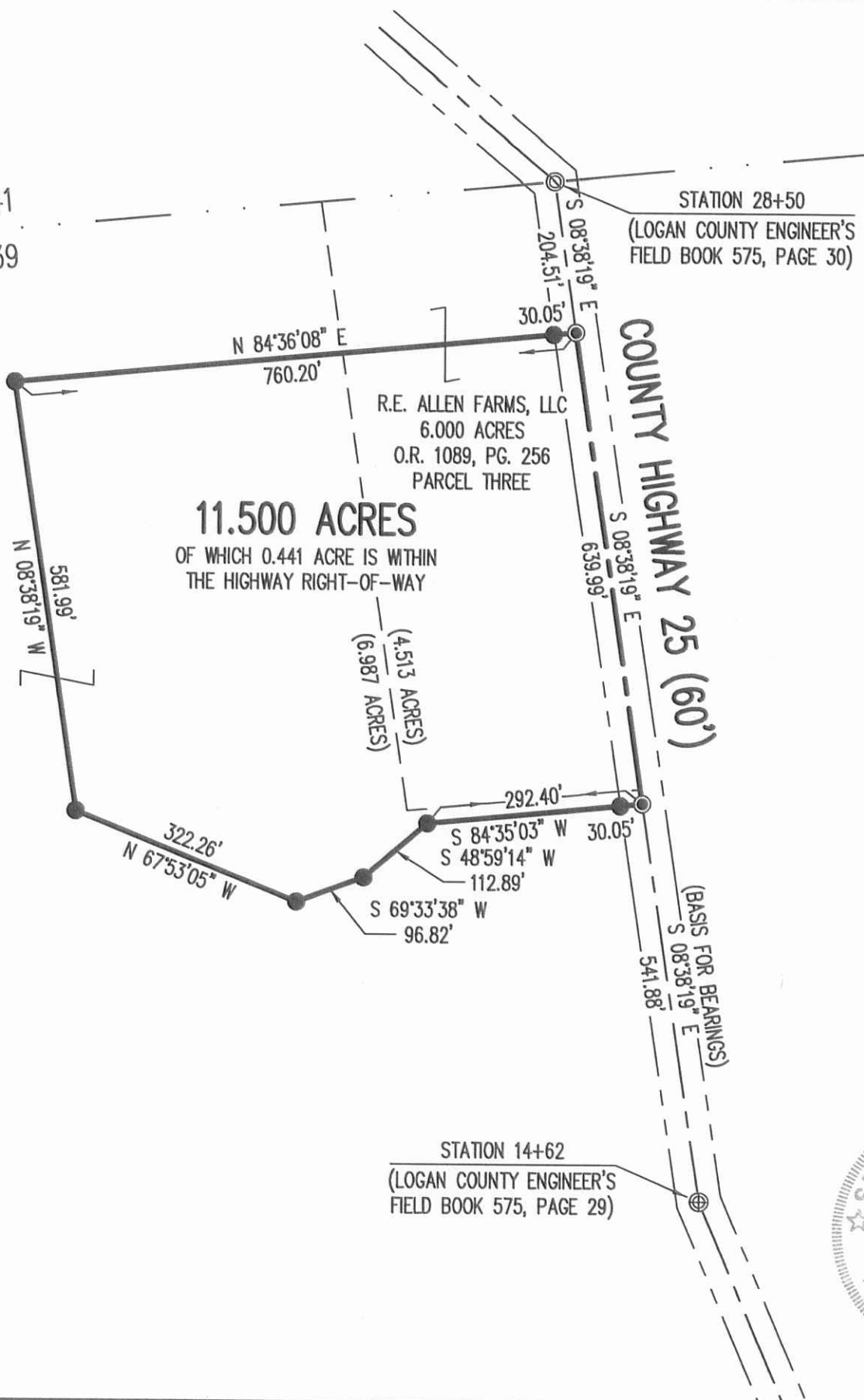


6010616

✓ **APPROVED** 6-24-16

V.M.S. 3441  
V.M.S. 3439

R.E. ALLEN FARMS, LLC  
60.333 ACRES  
O.R. 1089, PG. 256  
PARCEL TWO



**SURVEY OF 11.500 ACRES OUT OF THE  
R.E. ALLEN FARMS, LLC  
60.333 ACRE TRACT AND  
6.000 ACRE TRACT  
OFFICIAL RECORD 1089, PAGE 256  
PARCEL TWO AND PARCEL THREE  
VIRGINIA MILITARY SURVEY 3439  
JEFFERSON TOWNSHIP  
LOGAN COUNTY, OHIO**

SURVEYED BY:

*William K. Bruce*

WILLIAM K. BRUCE  
PROFESSIONAL SURVEYOR 7437  
MAY 16, 2016  
REVISED JUNE 20, 2016

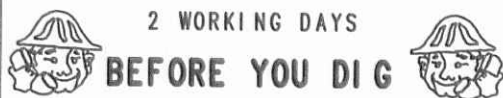


ORIGINAL STAMP IN GREEN

COPYRIGHT 2016 BY:  
**LEE SURVEYING & MAPPING CO., INC.**  
117 North Madriver Street  
BELLEFONTAINE, OHIO 43311  
(937) 593-7335  
WWW.LSMINC.US  
surveys@lsminc.us

KSS D0616 6010316 L-601-3

THIS SURVEY WAS PREPARED IN THE ABSENCE OF  
A COMPLETE AND ACCURATE TITLE SEARCH AND  
DOES NOT GUARANTEE TITLE.



CALL TOLL FREE **800-362-2764**

OHIO UTILITIES PROTECTION SERVICE

INDEXED ON MAP

0455 7P





**APPROVED**

6-24-16

# Lee Surveying and Mapping Co., Inc.

Land Surveys • Topography • Subdivisions • Construction Layout

117 N. Madriver St.  
Bellefontaine OH 43311



Phone: (937) 593-7335  
Fax: (937) 593-7444  
surveys@lsminc.us

## R.E. ALLEN FARMS, LLC 11.500 ACRES

Lying in Virginia Military Survey 3439, Jefferson Township, Logan County, Ohio.

Being out of the R.E. Allen Farms, LLC, 60.333 acre tract and 6.000 acre tract as deeded and described in Official Record 1089, Page 256, Parcel Two and Parcel Three of the Logan County Records of Deeds and being more particularly described as follows:

Commencing on a 1 inch iron rod found on the north line of Virginia Military Survey 3439 on the center-line of County Highway 25 at Station 28 + 50 (Logan County Engineer's Field Book 575, Page 30).

THENCE, with the center-line of County Highway 25 (60 feet wide), S 08°-38'-19"E, a distance of 204.51 feet to a MAG nail set at the TRUE POINT OF BEGINNING.

THENCE, with the center-line of County Highway 25, S 08°-38'-19"E, a distance of 639.99 feet to a MAG nail set.

THENCE, S 84°-35'-03"W, a distance of 292.40 feet to a 5/8 inch iron rod set, passing a 5/8 inch iron rod set at 30.05 feet.

THENCE, S 48°-59'-14"W, a distance of 112.89 feet to a 5/8 inch iron rod set.

THENCE, S 69°-33'-38"W, a distance of 96.82 feet to a 5/8 inch iron rod set.

THENCE, N 67°-53'-05"W, a distance of 322.26 feet to a 5/8 inch iron rod set.

THENCE, N 08°-38'-19"W, a distance of 581.99 feet to a 5/8 inch iron rod set.

THENCE, N 84°-36'-08"E, a distance of 760.20 feet to the point of beginning, passing a 5/8 inch iron rod set at 730.15 feet.

Containing 11.500 acres, of which 0.441 acre is within the highway right-of-way.

Property is subject to any and all previous easements and rights-of-way of record.

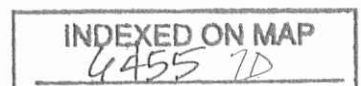
The basis for bearings is the center-line of County Highway 25, being S 08°-38'-19"E, and all other bearings are from angles and distances measured in a field survey by Lee Surveying and Mapping Co., Inc. on May 16, 2016, revised June 20, 2016.



Description prepared by:

*William K. Bruce*

William K. Bruce  
Professional Surveyor 7437  
June 20, 2016



6010616