

Lee Surveying and Mapping Co.



Farm Surveys • Lot Surveys • Topography • Subdivisions • Construction Layout

855 EAST SANDUSKY AVENUE
BELLEFONTAINE, OHIO 43311

(513) 593-5780

CLAYTON M. LEE, P.S.
JEFFREY I. LEE, P.S.

DESCRIPTION NOT FOR TRANSFER.

LAND USE BREAK-DOWN OF THE KELLEY 40 ACRES

Lying in V.M.S. 3220, Jefferson Township, Logan County, Ohio.

Being that 40 acre tract (40.027 actual) lying in the name of Henry and Helen Kelley as deeded and described in Volume 353, Page 106 of the Logan County Records of Deeds.

The commercial area of said 40.027 acres described as follows:

Beginning at a spike found on the center-line of County Road 55, marking the southwest corner of said 40.027 acres.

THENCE, with the said center-line of County Road 55, N 2°-00' E, a distance of 90.00 feet.

THENCE, parallel to the south property line, S 88°-04' E, a distance of 423.8 feet.

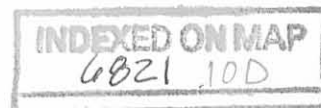
THENCE, parallel to the center-line of County Road 55, S 2°-00' W, a distance of 90.00 feet to the south line of said 40.027 acres.

THENCE, with said south line, N 88°-04' W, a distance of 423.8 feet to the point of beginning. Containing 0.876 acres in commercial, with 39.151 acres in agriculture area.

Prepared by:



Clayton M. Lee
Clayton M. Lee
Reg. Surveyor No. 6181
3-4-83



Co. Rd. 55

753.7

N 2° E

NORTH

2313.3'
(DEED)

40.027 ACRES (TOTAL)
LESS 0.876

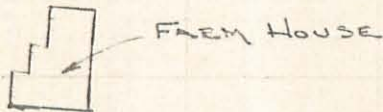
39.151 ACRES (AGRICULTURE)

SCALE 1" = 100'

753.7'

LAND USE SURVEY

HENRY & HELEN KELLY PROPERTY
40 ACRES (DEED) VOL. 353, PG. 106
V.M.S. 3220, JEFFERSON TWP.
LOGAN COUNTY, OHIO



Jeffrey I. Lee

JEFFREY I. LEE
REG. SURVEYOR 6359
3-4-83

6821 1DP

INDEXED ON MAP

S 88°-04'E
423.8'



0.876 AC.
(COMMERCIAL)
STONE DRIVE

STONE PARKING

80'
MAS. STEEL
MANUFG.
BLDG.

Deck

90' x 20'

FARM BLDG.

423.8'

N 88°-04'W

2313.3' (DEED)



Lee Surveying and Mapping Co., Inc.



Farm Surveys • Lot Surveys • Topography • Subdivisions • Construction Layout

117 North Madriver Street
Bellefontaine, Ohio 43311

Phone (937) 593-7335
Fax (937) 593-7444

HEILMAN 1.050 ACRES

Lying in Virginia Military Survey 3220, Jefferson Township, Logan County, Ohio.

Being out of the Harold Heilman and Patricia Heilman, Trustees of the Heilman Family Trust original 35.147 acre tract as deeded and described in Official Record 298, Page 193 of the Logan County Records of Deeds and being more particularly described as follows:

Beginning at a railroad spike found on the center-line of County Highway 55 (60 feet wide) at the northeast corner of Belle View Estates Subdivision (Plat Cabinet A, Slide 677).

THENCE, with the center-line of County Highway 55, N 2°-00'-00" E, a distance of 9.60 feet to a railroad spike set at the TRUE POINT OF BEGINNING.

THENCE, with the center-line of County Highway 55, N 2°-00'-00" E, a distance of 182.65 feet to a railroad spike set.

THENCE, with the south line of the Robert J. Lovett, Jr. 60 acre tract (O.R. 39, Pg. 187), S 88°-34'-19" E, a distance of 248.72 feet to a 5/8 inch iron rod set.

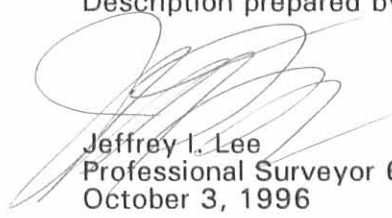
THENCE, S 2°-00'-00" W, a distance of 185.13 feet to a 5/8 inch iron rod set.

THENCE, N 88°-00'-00" W, a distance of 248.71 feet to the point of beginning.

Containing 1.050 acres of which 0.126 acre is within the highway right-of-way.

The basis for bearings is the center-line of County Highway 55 being N 2°-00'-00" E, and all other bearings are from angles and distances measured in a field survey by Lee Surveying and Mapping Co., Inc. on September 23, 1996.

Description prepared by:


Jeffrey I. Lee
Professional Surveyor 6359
October 3, 1996



L 980

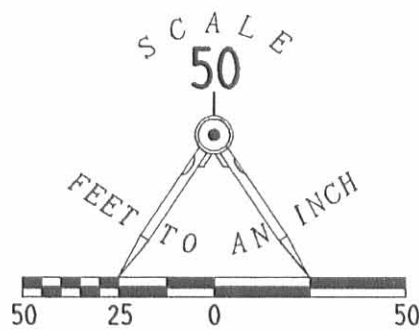
ORIGINAL STAMP IN GREEN

INDEXED ON MAP
6821 11D

LEGEND

- 5/8" IRON ROD SET
- 5/8" IRON ROD FOUND
- ⊕ RAILROAD SPIKE SET
- ⊗ RAILROAD SPIKE FOUND
- ⊙ 1" IRON PIPE FOUND IN MONUMENT BOX

ROBERT J. LOVETT, JR.
60 ACRES
O.R. 39, PG. 187



S 88°34'19"E
248.72'

1.050 ACRES
OF WHICH 0.126 ACRE IS WITHIN
HIGHWAY RIGHT-OF-WAY

S 02°00'00"W
185.13'

HAROLD & PATRICIA HEILMAN
TRUSTEES OF THE HEILMAN FAMILY TRUST
35.147 ACRES
O.R. 298, PG. 193

N 02°00'00"E
182.65'

9.60'

248.71'

N 88°00'00"W

60.00'

S 88°00'00"E
248.71'

1.044 ACRES
OF WHICH 0.126 ACRE IS WITHIN
HIGHWAY RIGHT-OF-WAY

S 02°00'00"W
183.08'

ROBERT V. HERTENSTEIN
3.333 ACRES
O.R. 288, PG. 669

**BOUNDARY SURVEY OF A 1.050 ACRE TRACT
AND A 1.044 ACRE TRACT OUT OF THE
HAROLD AND PATRICIA HEILMAN
TRUSTEES OF THE HEILMAN FAMILY TRUST
ORIGINAL 35.147 ACRES
OFFICIAL RECORD 298, PAGE 193
VIRGINIA MILITARY SURVEY 3220
JEFFERSON TOWNSHIP
LOGAN COUNTY, OHIO**

SURVEYED BY:

JEFFREY I. LEE
PROFESSIONAL SURVEYOR 6359
SEPTEMBER 23, 1996

COPYRIGHT 1996 BY:
LEE SURVEYING & MAPPING CO., INC.
117 North Madriver Street
BELLEFONTAINE, OHIO 43311
(513) 593-7335

D 287 HEILMAN

L-980-3



ORIGINAL STAMP IN GREEN

INDEXED ON MAP
6821 IIP

BELLE VIEW ESTATES SUBDIVISION
PLAT CABINET A, SLIDE 677

LOT 1

COUNTY HIGHWAY 55 (60')

2 WORKING DAYS

BEFORE YOU DIG

CALL TOLL FREE **800-362-2764**

OHIO UTILITIES PROTECTION SERVICE.

Lee Surveying and Mapping Co.



Farm Surveys • Lot Surveys • Topography • Subdivisions • Construction Layout

855 EAST SANDUSKY AVENUE
BELLEFONTAINE, OHIO 43311

(513) 593-5780

CLAYTON M. LEE, P.S.
JEFFREY I. LEE, P.S.

KELLY 1.198 ACRES

Lying in V.M.S. 3220, Jefferson Township, Logan County, Ohio.

Being out of the southwest corner of that 40 acres deeded and described in Volume 353, Page 106 of the Logan County Records of Deeds and being more particularly described as follows:

Beginning at a 3/4" iron rod found on the center-line of County Road 55 marking the southwest corner of said 40 acre tract (also being the northwest corner of the Harold N. Heilman 32.56 acres, Volume 370, Page 126).

THENCE, with the center-line of County Road 55, N 2°-00' E, a distance of 107.00 feet to a railroad spike (Set).

THENCE, parallel to the south property line, S 87°-58' E, a distance of 487.74 feet to a 5/8" iron rod (Set).

THENCE, parallel to County Road 55, S 2°-00' W, a distance of 107.00 feet to a 5/8" iron rod set on the grantor's south property line.

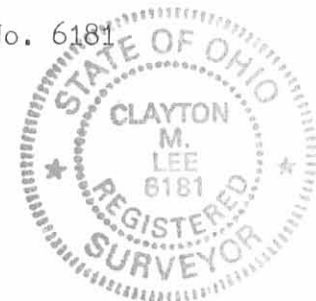
THENCE, with said property line, N 87°-58' W, a distance of 487.74 feet to the point of beginning.

Containing 1.198 acres.

Prepared by:

Clayton M. Lee
Professional Surveyor No. 6181
December 2, 1985

This description prepared from an actual field survey.



ORIGINAL STAMP IN GREEN

L-980

INDEXED ON MAP
6821 00

INDEXED ON MAP
68218P

HENRY KELLEY
40 AC. (VOL. 353, PG 106)

S 87°-58' E

487.74'

1.198 ACRES

S 2°-00' W
107.00'

N 87°-58' W

487.74'

PROPERTY LINE

HAROLD HEILMAN
32.56 ACRES
VOL. 370, PG. 126

LEGEND

- - 5/8" IRON ROD SET
- ⊙ - 3/4" IRON ROD FOUND
- - RR SPIKE SET

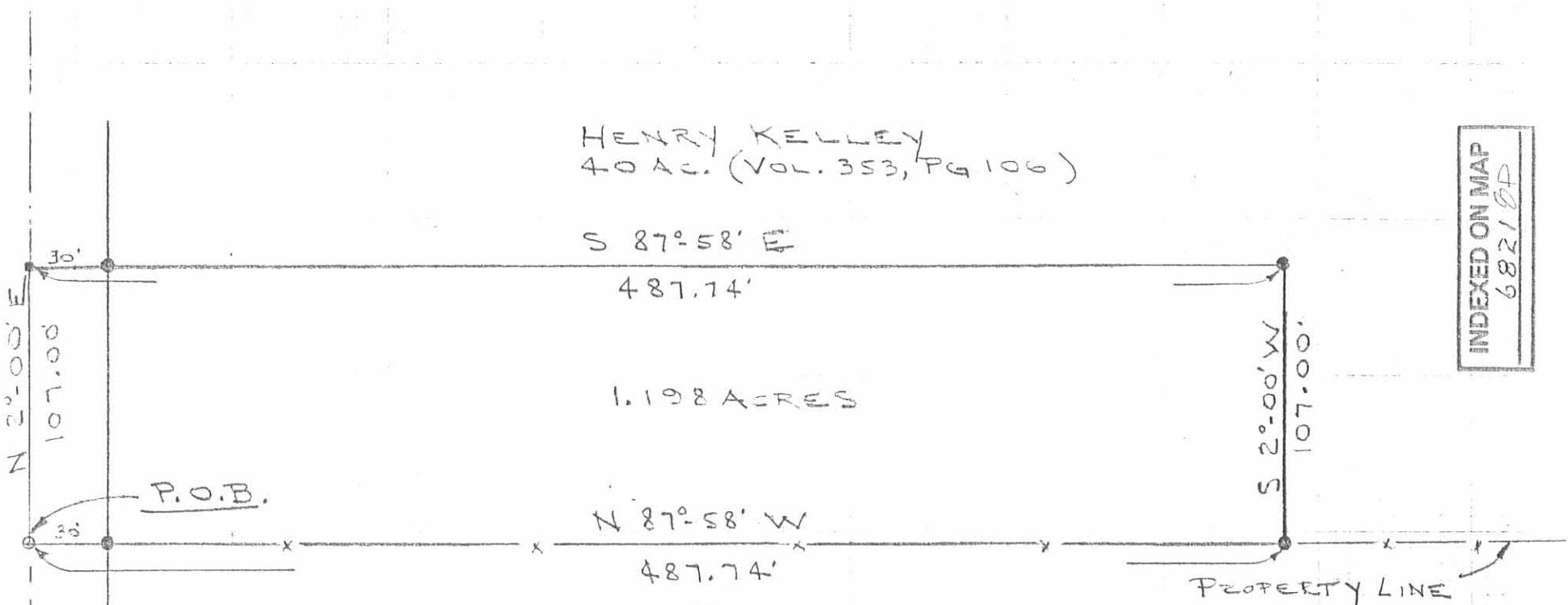
SURVEY OF 1.198 ACRES OF THE
HENRY KELLEY 40 ACRE TRACT (VOL. 353, PG. 106)
V.M.S. 3220, JEFFERSON TWP, LOGAN COUNTY, OHIO

BEARINGS BASIS
PREV. SURVEY OF GRANTOR'S
PROPERTY (VOL. 353, PG. 106)

By: Jeffrey I. Lee
JEFFREY I. LEE
PROF. SURVEYOR 6359
NOV. 27, 1985



ORIGINAL STAMP IN GREEN



CO. HWY. 55
107.00'
N

P.O.B.

SCALE - 1" = 60'

Lee Surveying and Mapping Co., Inc.

Land Surveys • Topography • Subdivisions • Construction Layout

117 N. Madriver St.
Bellefontaine OH 43311



Phone: (937) 593-7335
Fax: (937) 593-7444

HEILMAN 0.691 ACRE

Lying in Virginia Military Survey 3220, Jefferson Township, Logan County, Ohio.

Being out of the Harold & Patricia Heilman Trustees of the Heilman Family Trust original 35.147 acre tract as deeded and described in Official Record 298, Page 193 of the Logan County Records of Deeds and being more particularly described as follows:

Beginning at a railroad spike found at the northeast corner of Lot 1 of the Belle View Estates Subdivision (Plat Cabinet A, Slide 677) and on the center-line of County Highway 55 (60 feet wide).

THENCE, with the center-line of County Highway 55, N 2°-00'-00" E, a distance of 9.60 feet to a railroad spike found.

THENCE, with the south line of the Brian M. Norris 2.125 acre tract (O.R. 320, Pg. 95), S 88°-00'-00" E, a distance of 500.00 feet to a 5/8 inch iron rod found at the TRUE POINT OF BEGINNING.

THENCE, with the east line of the said 2.125 acre tract, N 2°-00'-55" E, a distance of 187.61 feet to a 5/8 inch iron rod found.

THENCE, with the south line of the Robert J. Lovett, Jr. 60 acre tract (O.R. 39, Pg. 187), S 88°-34'-19" E, a distance of 159.80 feet to a 5/8 inch iron rod set.

THENCE, S 2°-00'-00" W, a distance of 189.21 feet to a 5/8 inch iron rod set.

THENCE, N 88°-00'-00" W, a distance of 159.84 feet to the point of beginning.

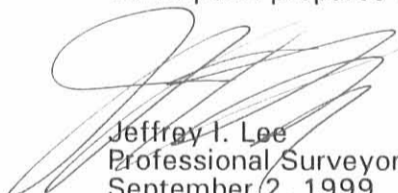
Containing 0.691 acre.

The basis for bearings is the center-line of County Highway 55 being N 2°-00'-00" E, and all other bearings are from angles and distances measured in a field survey by Lee Surveying and Mapping Co., Inc. on August 30, 1999.

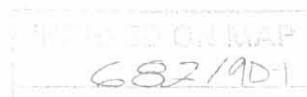


ORIGINAL STAMP IN GREEN

Description prepared by:


Jeffrey I. Lee
Professional Surveyor 6359
September 2, 1999

L-980



REC'D 9-13-99 SMJ DLK

Lee Surveying and Mapping Co., Inc.

Land Surveys • Topography • Subdivisions • Construction Layout

117 N. Madriver St.
Bellefontaine OH 43311



Phone: (937) 593-7335
Fax: (937) 593-7444

Lying in the Virginia Military Survey 3220, Jefferson Township, Logan County, Ohio.

Reserving a 60 feet wide ingress\egress easement over, under and through the above described 2.640 acre tract.

Beginning at a railroad spike found at the northeast corneo of Lot 1 of the Bele View Estates Subdivision (Plat Cabinet A, Slide 677) and on the center-lines of County Highway 55 (60 feet wide).

THENCE, with the center-line of County Highway 55, S 88°-00'00" W, a distance of 20.40 feet to a point at the TRUE POINT OF BEGINNING.

THENCE, with the center-line of the said easement, S 88°-00'-00" E, a distance of 659.84 feet to the terminus of this easement.

The basis for bearings is the center-line of County Highway 55 being N 2°-00'-00" E, and all other bearings are from angles and distances measured in a field survey by Lee Surveying and Mapping Co., Inc. on August 30, 1999.

Description prepared by:



ORIGINAL STAMP IN GREEN

[Handwritten Signature]
Jeffrey I. Lee
Professional Surveyor 6359
September 2, 1999

L-980



Lee Surveying and Mapping Co., Inc.

Land Surveys • Topography • Subdivisions • Construction Layout

117 N. Madriver St.
Bellefontaine OH 43311



Phone: (937) 593-7335
Fax: (937) 593-7444

HEILMAN 2.640 ACRE

Lying in Virginia Military Survey 3220, Jefferson Township, Logan County, Ohio.

Being out of the Harold & Patricia Heilman Trustees of the Heilman Family Trust original 35.147 acre tract as deeded and described in Official Record 298, Page 193 of the Logan County Records of Deeds and being more particularly described as follows:

Beginning at a railroad spike found at the northeast corner of Lot 1 of the Belle View Estates Subdivision (Plat Cabinet A, Slide 677) and on the center-line of County Highway 55 (60 feet wide).

THENCE, with the center-line of County Highway 55, N 2°-00'-00" E, a distance of 9.60 feet to a railroad spike found.

THENCE, with the south line and the south line extended of the Brian M. Norris 2.125 acre tract (O.R. 320, Pg. 95), S 88°-00'-00" E, a distance of 659.84 feet to a 5/8 inch iron rod set, passing 5/8 inch iron rods found at 30.00 feet and 500.00 feet.

THENCE, S 2°-00'-00" W, a distance of 243.77 feet to a 5/8 inch iron rod found.

THENCE, with the north line of the Robert V. Hertenstein 3.333 acre tract (O.R. 288, Pg. 669), N 87°-54'-00" W, a distance of 411.06 feet to a 5/8 inch iron rod found.

THENCE, with the lines of the Janet S. Franz 1.044 acre tract (O.R. 405, Pg. 784), the following 2 courses:

N 1°-59'-12" E, a distance of 183.07 feet to a 5/8 inch iron rod found.

N 88°-00'-00" W, a distance of 248.71 feet to a railroad spike found, passing a 5/8 inch iron rod found at 218.71 feet.

THENCE, with the center-line of County Highway 55, N 2°-00'-00" E, a distance of 50.40 feet to the point of beginning.

Containing 2.640 acres of which 0.041 acre is within the highway right-of-way.

The basis for bearings is the center-line of County Highway 55 being N 2°-00'-00" E; and all other bearings are from angles and distances measured in a field survey by Lee Surveying and Mapping Co., Inc. on August 30, 1999.

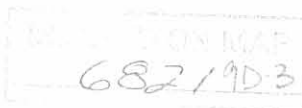


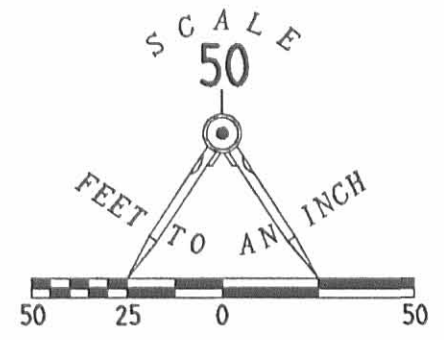
ORIGINAL STAMP IN GREEN

Description prepared by:

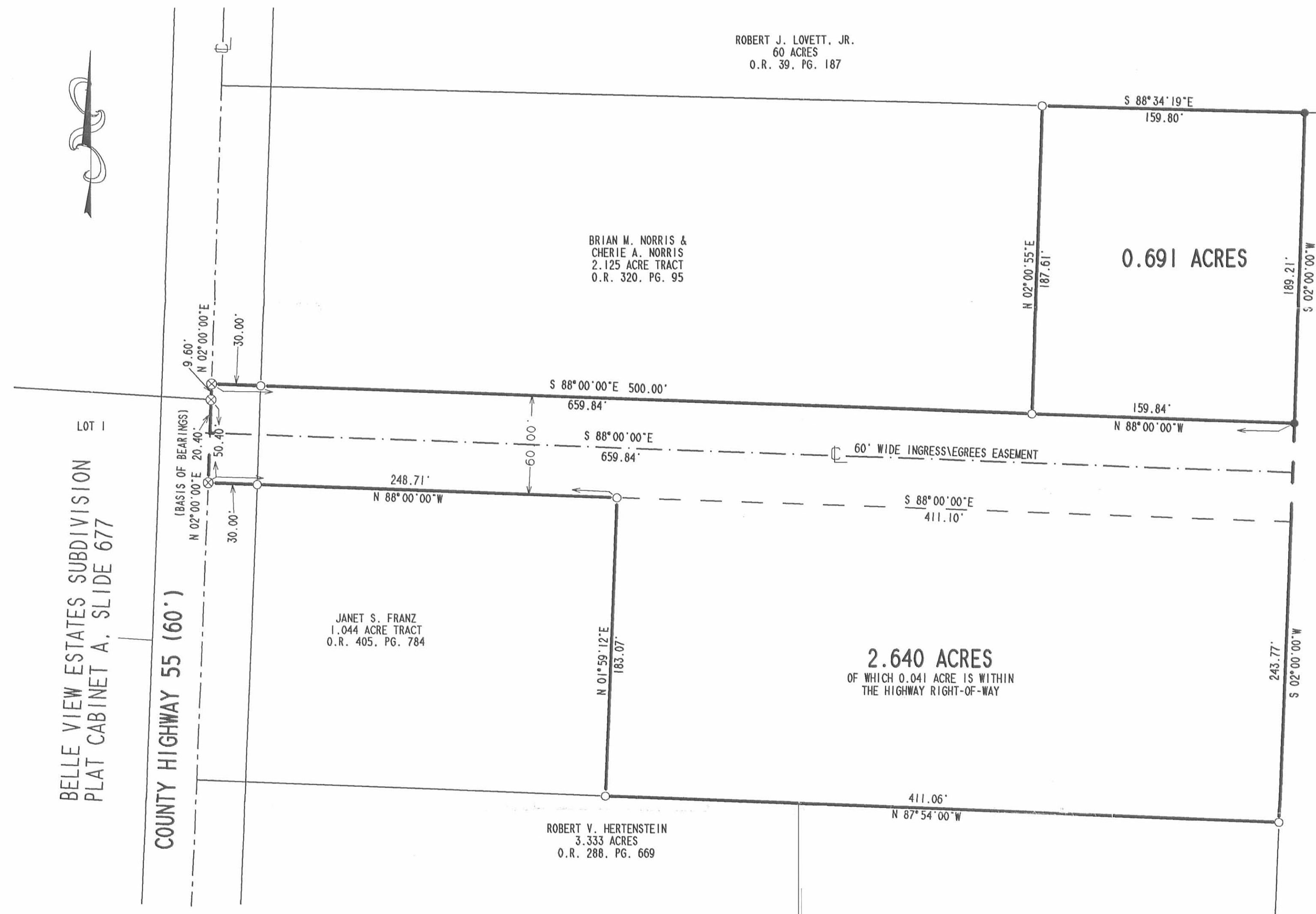
Jeffrey I. Lee
Jeffrey I. Lee
Professional Surveyor 6359
September 2, 1999

L-980





- LEGEND
- 5/8" IRON ROD SET
 - 5/8" IRON ROD FOUND
 - ⊗ RAILROAD SPIKE FOUND



ROBERT J. LOVETT, JR.
60 ACRES
O.R. 39, PG. 187

BRIAN M. NORRIS &
CHERIE A. NORRIS
2.125 ACRE TRACT
O.R. 320, PG. 95

0.691 ACRES

LOT 1
BELLE VIEW ESTATES SUBDIVISION
PLAT CABINET A, SLIDE 677

COUNTY HIGHWAY 55 (60')

JANET S. FRANZ
1.044 ACRE TRACT
O.R. 405, PG. 784

2.640 ACRES
OF WHICH 0.041 ACRE IS WITHIN
THE HIGHWAY RIGHT-OF-WAY

ROBERT V. HERTENSTEIN
3.333 ACRES
O.R. 288, PG. 669

HAROLD & PATRICIA HEILMAN
TRUSTEES OF THE HEILMAN FAMILY TRUST
35.147 ACRES
O.R. 298, PG. 193

BOUNDARY SURVEY OF TWO TRACTS
OUT OF THE
HAROLD AND PATRICIA HEILMAN
TRUSTEES OF THE HEILMAN FAMILY TRUST
ORIGINAL 35.147 ACRES
OFFICIAL RECORD 298, PAGE 193
VIRGINIA MILITARY SURVEY 3220
JEFFERSON TOWNSHIP
LOGAN COUNTY, OHIO



ORIGINAL STAMP IN GREEN

SURVEYED BY:
Jeffrey I. Lee
JEFFREY I. LEE
PROFESSIONAL SURVEYOR 6359
AUGUST 30, 1999

COPYRIGHT 1999 BY:
LEE SURVEYING & MAPPING CO., INC.
117 North Madriver Street
BELLEFONTAINE, OHIO 43311
(937) 593-7335

2 WORKING DAYS
BEFORE YOU DIG
CALL TOLL FREE 800-362-2764
OHIO UTILITIES PROTECTION SERVICE.

INDEXED ON MAP
682/9P

2-22-18

Lee Surveying and Mapping Co.

Land Surveys • Topography • Subdivisions • Construction Layout



117 N. Madriver St.
Bellefontaine OH 43311



Phone: (937) 593-7335
Fax: (937) 593-7444
surveys@lsminc.us

HEILMAN 15.894 ACRES

Lying in Virginia Military Survey 3220, Jefferson Township, Logan County, Ohio (all records referenced herein refer to the Logan County Records of Deeds).

Being out of the Patrick R. Heilman and Sandra D. Heilman 21.485 acre tract as deeded and described in Official Record 884, Page 300, Parcel I, all of the Patrick R. Heilman and Sandra D. Heilman 9.779 acre tract as deeded and described in Official Record 884, Page 300, Parcel II and part of the Patrick R. Heilman 3.134 acre tract as deeded and described in Official Record 1127, Page 444 and being more particularly described as follows:

Commencing at a 1 inch iron pipe found in a monument box on the center-line of County Highway 55 (60 feet wide) at Station 55 + 43 (Logan County Engineer's Field Book 607, Page 31);

THENCE, with the center-line of said County Highway 55, N 05°-03'-45"E, a distance of 688.35 feet to a point at a common corner to said 9.779 acre tract and the Blacklidge Family Realty, LLC, 4.795 acre tract as deeded and described in Official Record 981, Page 1, Tract I, at the **TRUE POINT OF BEGINNING**, said point being referenced by a railroad spike found bearing N 86°-43'-58"W, a distance of 0.22 feet;

THENCE, continuing with the center-line of said County Highway 55 and the westerly line of said 9.779 tract, N 05°-03'-45"E, a distance of 376.69 feet to a point, being a corner common to said 9.779 acre tract and the Reid Mohler Staten, Inc., 1.198 acre tract as deeded and described in Official Record 1167, Page 921, Tract One, said point referenced by a 3/4 inch iron pipe found bearing N 84°-49'-58"W, a distance of 0.36 feet and S 05°-03'-45"W, a distance of 559.94 feet from a railroad spike found at Station 71 + 68.6 (Logan County Engineer's Field Book 607, Page 32);

THENCE, with the north line of said 9.779 acre tract and the south line of said 1.198 acre tract and the south line of the Reid Mohler Staten, Inc., 0.322 acre tract as deeded and described in Official Record 1167, Page 921, Tract Two, S 84°-49'-58"E, a distance of 618.28 feet to a 5/8 inch iron rod found at a corner common to said 0.322 acre tract and said 21.485 acre tract, passing a 5/8 inch iron rod set at a distance of 30.00 feet and a 5/8 inch iron rod found at a distance of 487.74 feet;

INDEXED ON MAP
6821

Lee Surveying and Mapping Co.

Land Surveys • Topography • Subdivisions • Construction Layout

117 N. Madriver St.
Bellefontaine OH 43311



Phone: (937) 593-7335
Fax: (937) 593-7444
surveys@lsminc.us

THENCE, with a common line to said 0.322 acre and 21.845 acre tracts, N 05°-10'-09"E, a distance of 106.95 feet to a 5/8 inch iron rod found on the southerly line of said 3.134 acre tract;

THENCE, with a common line to said 0.322 acre and 3.134 acre tracts, N 84°-48'-13"W, a distance of 84.75 feet to a 5/8 inch iron rod set;

THENCE, with a new division line through said 3.134 acre tract, N 05°-12'-20"E, a distance of 149.93 feet to a 5/8 inch iron rod found at a common corner to said 3.134 acre tract and the Eric Musser and Holly Musser 0.199 acre tract as deeded and described in Official Record 884, Page 296, Tract II;

THENCE, with a common line to said 0.199 acre and 3.134 acre tracts, S 85°-30'-30"E, a distance of 125.63 feet to a 5/8 inch iron rod found at a common corner to said 0.199 acre and 21.485 acre tracts and the Eric Musser and Holly Musser 3.802 acre tract as deeded and described in Official Record 884, Page 296, Tract I;

THENCE, with common lines to said 3.802 acre and 21.485 acre tracts, the following three (3) courses:

- (1) S 85°-39'-26"E, a distance of 261.53 feet to a 5/8 inch iron rod found;
- (2) S 88°-33'-53"E, a distance of 66.87 feet to a 5/8 inch iron rod found;
and
- (3) S 84°-49'-45"E, a distance of 295.75 feet to a 5/8 inch iron rod found at a common corner to said 3.802 acre and 21.485 acre tracts;

THENCE, with new division lines through said 21.485 acre tract, the following three (3) courses:

- (1) S 84°-49'-45"E, a distance of 222.98 feet to a 5/8 inch iron rod set;
- (2) S 45°-05'-42"E, a distance of 186.75 feet to a 5/8 inch iron rod set;
and
- (3) S 11°-00'-51"E, a distance of 144.30 feet to a 5/8 inch iron rod set on a common line to said 21.485 acre tract and the Blacklidge Family Realty, LLC, 22.781 acre tract as deeded and described in Official Record 981, Page 907, Parcel I;



Lee Surveying and Mapping Co.

Land Surveys • Topography • Subdivisions • Construction Layout

117 N. Madriver St.
Bellefontaine OH 43311



Phone: (937) 593-7335
Fax: (937) 593-7444
surveys@lsminc.us

THENCE, with common lines to said 21.485 acre and 22.781 acre tracts, the following two (2) courses:

- (1) N 85°-30'-23"W, a distance of 690.26 feet to a 5/8 inch iron rod set;
- (2) N 85°-00'-55"W, a distance of 31.85 feet to a 5/8 inch iron rod found at the northeast corner of said 9.779 acre tract;

THENCE, with a common line to said 9.779 acre and 22.781 acre tracts, S 05°-06'-39"W, a distance of 505.67 feet to a 5/8 inch iron rod found on the northerly line of the Blackledge Family Realty, LLC, 9.203 acre tract as deeded and described in Official Record 981, Page 907, Parcel III;

THENCE, with a common line to said 9.779 acre and 9.203 acre tracts, N 86°-35'-01"W, a distance of 413.73 feet to a 1-1/4 inch iron pipe found on the easterly line of said 4.795 acre tract;

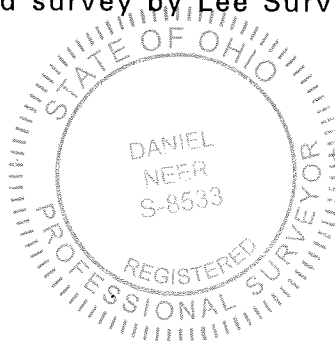
THENCE, with common lines to said 9.779 acre and 4.795 acre tracts, the following two (2) courses:

- (1) N 05°-01'-33"E, a distance of 159.69 feet to a 1-1/4 inch iron pipe found; and
- (2) N 86°-43'-58"W, a distance of 554.17 feet to the **POINT OF BEGINNING**, passing a 5/8 inch iron rod set at a distance of 524.16 feet.

Containing 15.894 acres, more or less, of which 0.259 acre is within the highway right-of-way.

Property is subject to any and all previous easements and rights-of-way of record.

The basis for bearings, described herein, is the center-line of County Highway 55 between Station 55 + 43 and Station 71 + 68.6, being N 05°-03'-45"E, and all other bearings are from angles and distances measured in a field survey by Lee Surveying and Mapping Co. on February 9, 2018



Description prepared by:

Daniel A. Neer
Daniel A. Neer
Professional Surveyor No. 8533
February 13, 2018



9800118

2-22-18

Lee Surveying and Mapping Co.

Land Surveys • Topography • Subdivisions • Construction Layout



117 N. Madriver St.
Bellefontaine OH 43311



Phone: (937) 593-7335
Fax: (937) 593-7444
surveys@lsminc.us

HEILMAN 16.089 ACRES

Lying in Virginia Military Survey 3220, Jefferson Township, Logan County, Ohio (all records referenced herein refer to the Logan County Records of Deeds).

Being out of the Patrick R. Heilman and Sandra D. Heilman 21.485 acre tract as deeded and described in Official Record 884, Page 300, Parcel I and being more particularly described as follows:

Commencing at a 1 inch iron pipe found in a monument box on the center-line of County Highway 55 (60 feet wide) at Station 55 + 43 (Logan County Engineer's Field Book 607, Page 31);

THENCE, with the center-line of said County Highway 55, N 05°-03'-45"E, a distance of 688.35 feet to a point at a common corner to said Patrick R. Heilman and Sandra D. Heilman 9.779 acre tract as deeded and described in Official Record 884, Page 300, Parcel II and the Blacklidge Family Realty, LLC, 4.795 acre tract as deeded and described in Official Record 981, Page 1, Tract I, being referenced by a railroad spike found bearing N 86°-43'-58"W, a distance of 0.22 feet;

THENCE, with common lines to said 9.779 acre and 4.795 acre tracts, the following two (2) courses:

(1) S 86°-43'-58"E, a distance of 554.17 feet to a 1-1/4 inch iron pipe found, passing a 5/8 inch iron rod set at a distance of 30.01 feet; and

(2) S 05°-01'-33"W, a distance of 159.69 feet to a 1-1/4 inch iron pipe found at the northwest corner of the Blacklidge Family Realty, LLC, 9.203 acre tract as deeded and described in Official Record 981, Page 907, Parcel III;

THENCE, with a common line to said 9.779 acre and 9.203 acre tracts, S 86°-35'-01"E, a distance of 413.73 feet to a 5/8 inch iron rod found at the southwest corner of the Blacklidge Family Realty, LLC, 22.781 acre tract as deeded and described in Official Record 981, Page 907, Parcel I;

THENCE, with a common line to said 9.779 acre and 22.781 acre tracts, N 05°-06'-39"E, a distance of 505.67 feet to a 5/8 inch iron rod found on a southerly line of said 21.485 acre tract;

INDEXED ON MAP
1282

Lee Surveying and Mapping Co.

Land Surveys • Topography • Subdivisions • Construction Layout

117 N. Madriver St.
Bellefontaine OH 43311



Phone: (937) 593-7335
Fax: (937) 593-7444
surveys@lsminc.us

THENCE, with common lines to said 21.485 acre and 22.781 acre tract, the following two (2) courses:

(1) S 85°-00'-55"E, a distance of 31.85 feet to a 5/8 inch iron rod set; and

(2) S 85°-30'-23"E, a distance of 690.26 feet to a 5/8 inch iron rod set at the **TRUE POINT OF BEGINNING**;

THENCE, with a new division line through said 21.485 acre tract, the following three (3) courses:

(1) N 11°-00'-51"W, a distance of 144.30 feet to a 5/8 inch iron rod set;

(2) N 45°-05'-42"W, a distance of 186.75 feet to a 5/8 inch iron rod set; and

(3) N 84°-49'-45"W, a distance of 222.98 feet to a 5/8 inch iron rod found at a common corner to said 21.485 acre tract and the Eric Musser and Holly Musser 3.802 acre tract as deeded and described in Official Record 884, Page 296, Tract I;

THENCE, with a common line to said 21.485 acre and 3.802 acre tracts, N 05°-03'-34"E, a distance of 500.85 feet to a 5/8 inch iron rod found on the south line of the Dale Joshua Lovett, 60 acre tract as deeded and described in Official Record 649, Page 301;

THENCE, with a common line to said 21.485 acre and 60 acre tracts, S 85°-30'-34"E, a distance of 1043.03 feet to a 5/8 inch iron rod found on the west line of the Pin High Farm LLC, 150.584 acre tract as deeded and described in Official Record 1095, Page 540;

THENCE, with a common line to said 21.485 acre and 150.584 acre tracts, S 05°-47'-00"W, a distance of 753.07 feet to a 6 inch wood post found at the northeast corner of said 22.781 acre tract;

THENCE, with common lines to said 21.845 acre and 22.781 acre tracts, the following two (2) courses:

(1) N 86°-58'-50"W, a distance of 417.79 feet to a 5/8 inch iron rod found; and



Lee Surveying and Mapping Co.

Land Surveys • Topography • Subdivisions • Construction Layout

117 N. Madriver St.
Bellefontaine OH 43311



Phone: (937) 593-7335
Fax: (937) 593-7444
surveys@lsminc.us

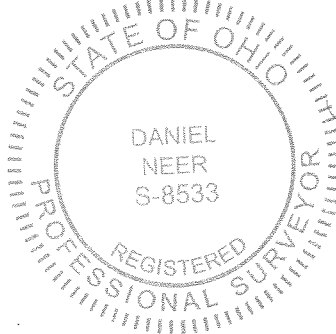
(2) N 85°-30'-23"W, a distance of 209.63 feet to the **POINT OF BEGINNING**;

Containing 16.089 acres, more or less.

This parcel is to be attached to an adjoining tract of land and is not to be used as a separate and independent parcel.

Property is subject to any and all previous easements and rights-of-way of record.

The basis for bearings, described herein, is the center-line of County Highway 55 between Station 55 + 43 and Station 71 + 68.6, being N 05°-03'-45"E, and all other bearings are from angles and distances measured in a field survey by Lee Surveying and Mapping Co. on February 9, 2018



Description prepared by:

A handwritten signature in black ink that reads 'D. Neer'.

Daniel A. Neer
Professional Surveyor No. 8533
February 13, 2018

9800118



BASIS FOR BEARINGS:

THE BASIS FOR BEARINGS SHOWN HEREON IS THE CENTER-LINE OF COUNTY HIGHWAY 55, BEING, N 05°03'45" E. STATION 71+68.6

(LOGAN COUNTY ENGINEER'S FIELD BOOK 607, PAGE 32)

COUNTY HIGHWAY 55 (60')

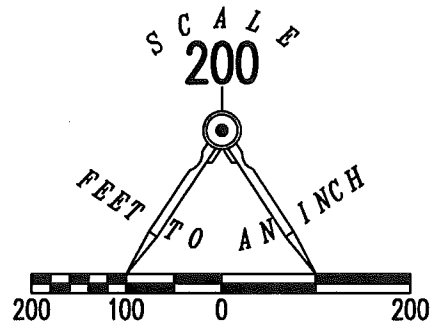
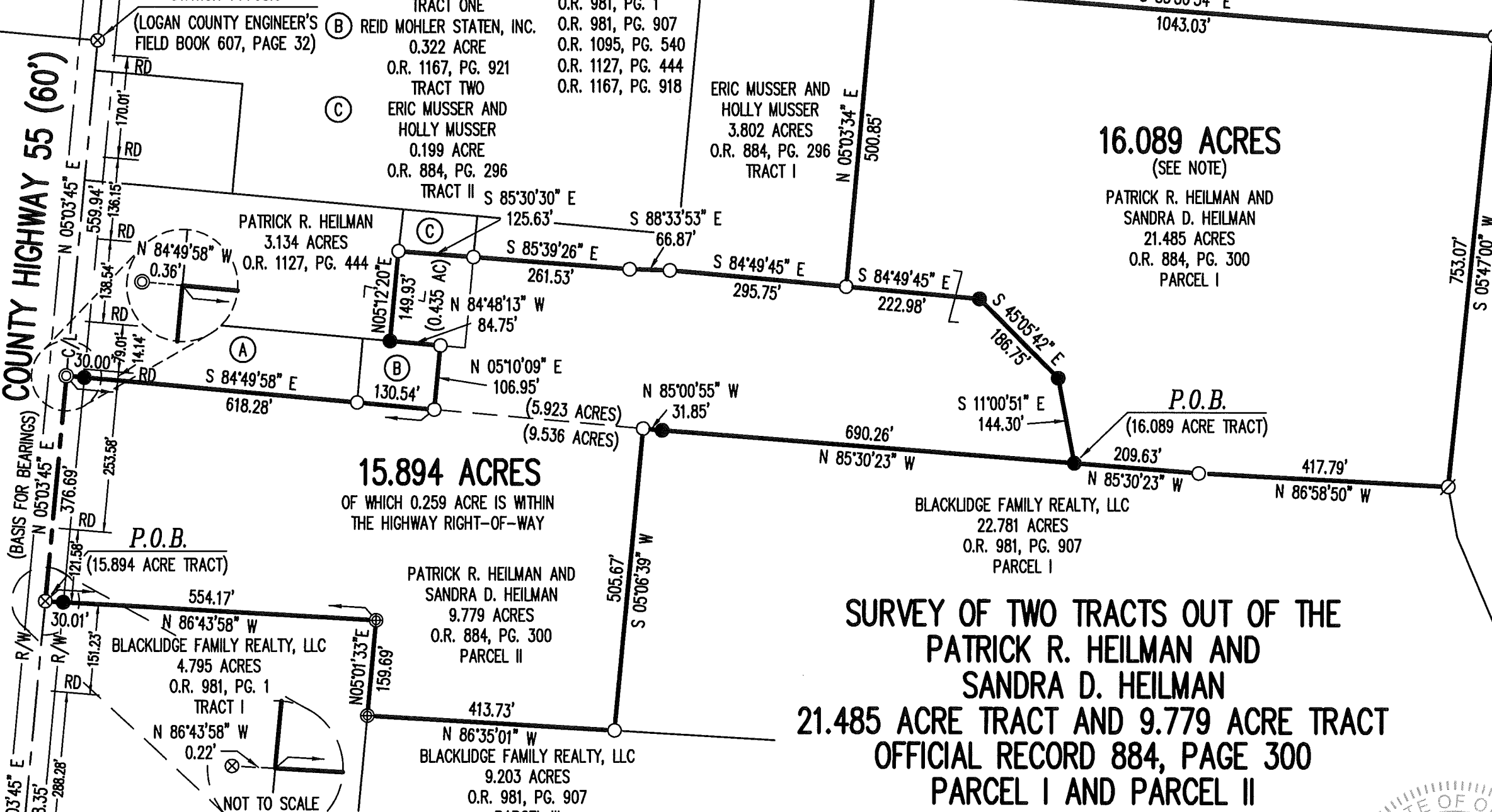
ADJOINERS:

- (A) REID MOHLER STATEN, INC. 1.198 ACRES
O.R. 1167, PG. 921 TRACT ONE
- (B) REID MOHLER STATEN, INC. 0.322 ACRE
O.R. 1167, PG. 921 TRACT TWO
- (C) ERIC MUSSER AND HOLLY MUSSER 0.199 ACRE
O.R. 884, PG. 296 TRACT II

DEED REFERENCES:

- O.R. 649, PG. 296
- O.R. 884, PG. 296
- O.R. 884, PG. 300
- O.R. 981, PG. 1
- O.R. 981, PG. 907
- O.R. 1095, PG. 540
- O.R. 1127, PG. 444
- O.R. 1167, PG. 918

DALE JOSHUA LOVETT
60 ACRES
O.R. 649, PG. 301



PIN HIGH FARM LLC
150.584 ACRES
O.R. 1095, PG. 540

LEGEND:

- ☒ 1 INCH IRON PIPE FOUND IN A MONUMENT BOX
- ⊗ RAILROAD SPIKE FOUND
- ⊙ 3/4 INCH IRON PIPE FOUND
- ⊕ 1-1/4 IRON PIPE FOUND
- ⊘ 6 INCH WOOD POST FOUND
- 5/8 INCH IRON ROD FOUND
- 5/8 INCH IRON ROD SET WITH PLASTIC I.D. CAP STAMPED "L-8533"

R/W = RIGHT-OF-WAY
C/L = CENTER-LINE
RD = RESIDENTIAL DRIVE
SURVEYED BY:

15.894 ACRES
OF WHICH 0.259 ACRE IS WITHIN THE HIGHWAY RIGHT-OF-WAY

16.089 ACRES
(SEE NOTE)

SURVEY OF TWO TRACTS OUT OF THE PATRICK R. HEILMAN AND SANDRA D. HEILMAN 21.485 ACRE TRACT AND 9.779 ACRE TRACT OFFICIAL RECORD 884, PAGE 300 PARCEL I AND PARCEL II AND THE PATRICK R. HEILMAN 3.134 ACRE TRACT OFFICIAL RECORD 1127, PAGE 444 VIRGINIA MILITARY SURVEY 3220 JEFFERSON TOWNSHIP LOGAN COUNTY, OHIO

ACCESS MANAGEMENT NOTE:

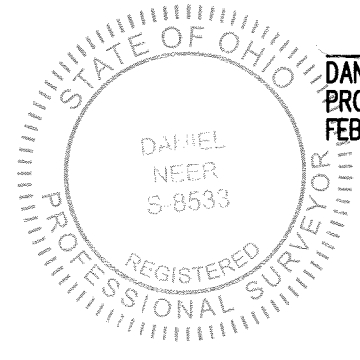
COUNTY HIGHWAY 55 IS CLASSIFIED AS A MINOR COLLECTOR ROAD. MINIMUM DRIVE SPACING IS 360'. MINIMUM STOPPING SIGHT DISTANCE IS >495 (55 MPH)

NOTE:

THE 16.089 ACRE PARCEL IS TO BE ATTACHED TO AN ADJOINING TRACT OF LAND AND IS NOT TO BE USED AS A SEPARATE AND INDEPENDENT PARCEL.

THIS SURVEY WAS PREPARED IN THE ABSENCE OF A COMPLETE AND ACCURATE TITLE SEARCH AND DOES NOT GUARANTEE TITLE.

2 WORKING DAYS
BEFORE YOU DIG
CALL TOLL FREE **800-362-2764**
OHIO UTILITIES PROTECTION SERVICE.



D. Neer
DANIEL A. NEER
PROFESSIONAL SURVEYOR NO. 8533
FEBRUARY 9, 2018

COPYRIGHT 2018 BY:
LEE SURVEYING & MAPPING CO.
117 North Madriver Street
BELLEFONTAINE, OHIO 43311
(937) 593-7335
WWW.LSMINC.US
surveys@lsminc.us

KSS D0118 9800118 L-980-3

INDEXED ON MAP
6821

4-24-18

Lee Surveying and Mapping Co.

✓ APPROVED Land Surveys • Topography • Subdivisions • Construction Layout

117 N. Madriver St.
Bellefontaine OH 43311



Phone: (937) 593-7335
Fax: (937) 593-7444
surveys@lsminc.us

HEILMAN 0.435 ACRE (FOR EXCEPTION DESCRIPTION PURPOSES ONLY)

Lying in Virginia Military Survey 3220, Jefferson Township, Logan County, Ohio (all records referenced herein refer to the Logan County Records of Deeds).

Being out of the Patrick R. Heilman 3.134 acre tract as deeded and described in Official Record 1127, Page 444 and being more particularly described as follows:

Commencing at a 1 inch iron pipe found in a monument box on the center-line of County Highway 55 (60 feet wide) at Station 55 + 43 (Logan County Engineer's Field Book 607, Page 31);

THENCE, with the center-line of said County Highway 55, N 05°-03'-45" E, a distance of 688.35 feet to a point at a common corner to the Patrick R. Heilman and Sandra D. Heilman 9.779 acre tract as deeded and described in Official Record 884, Page 300, Parcel II and the Blackledge Family Realty, LLC, 4.795 acre tract as deeded and described in Official Record 981, Page 1, Tract I, said point being referenced by a railroad spike found bearing N 86°-43'-58"W, a distance of 0.22 feet;

THENCE, continuing with said center-line of said County Highway 55 and the westerly line of said 9.779 tract, N 05°-03'-45" E, a distance of 376.69 feet to a point, being a corner common to said 9.779 acre tract and the Reid Mohler Staten, Inc., 1.198 acre tract as deeded and described in Official Record 1167, Page 921, Tract One, said point referenced by a 3/4 inch iron pipe found bearing N 84°-49'-58"W, a distance of 0.36 feet and S 05°-03'-45" W, a distance of 559.94 feet from a railroad spike found at Station 71 + 68.6 (Logan County Engineer's Field Book 607, Page 32);

THENCE, with the north line of said 9.779 acre tract and the south line of said 1.198 acre tract and the south line of the Reid Mohler Staten, Inc., 0.322 acre tract as deeded and described in Official Record 1167, Page 921, Tract Two, S 84°-49'-58" E, a distance of 618.28 feet to a 5/8 inch iron rod found at a corner common to said 0.322 acre tract and the Patrick R. Heilman and Sandra D. Heilman 21.485 acre tract as deeded and described in Official Record 884, Page 300, Parcel I, passing a 5/8 inch iron rod set at a distance of 30.00 feet and a 5/8 inch iron rod found at a distance of 487.74 feet;

THENCE, with a common line to said 0.322 acre and 21.845 acre tracts, N 05°-10'-09" E, a distance of 106.95 feet to a 5/8 inch iron rod found on the southerly line of said 3.134 acre tract at the **TRUE POINT OF BEGINNING**;

THENCE, with a common line to said 0.322 acre and 3.134 acre tracts, N 84°-48'-13"W, a distance of 84.75 feet to a 5/8 inch iron rod set;

THENCE, with a new division line through said 3.134 acre tract, N 05°-12'-20" E, a distance of 149.93 feet to a 5/8 inch iron rod found at a common corner to said 3.134 acre tract and the Eric Musser and Holly Musser 0.199 acre tract as deeded and described in Official Record 884, Page 296, Tract II;

THENCE, with a common line to said 0.199 acre and 3.134 acre tracts, S 85°-30'-30" E, a distance of 125.63 feet to a 5/8 inch iron rod found at a common corner to said 0.199 acre and 21.485 acre tracts and

INDEXED ON MAP
6021

Lee Surveying and Mapping Co.

Land Surveys • Topography • Subdivisions • Construction Layout

117 N. Madriver St.
Bellefontaine OH 43311



Phone: (937) 593-7335
Fax: (937) 593-7444
surveys@lsminc.us

the Eric Musser and Holly Musser 3.802 acre tract as deeded and described in Official Record 884, Page 296, Tract I;

THENCE, with common lines to said 3.134 acre and 21.485 acre tracts, the following two (2) courses:

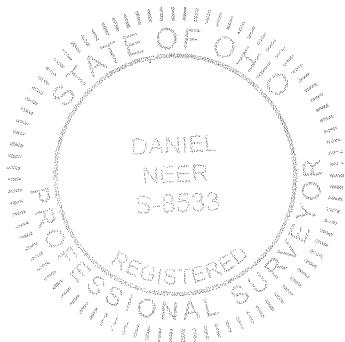
- (1) S 05°-05'-52" W, a distance of 151.48 feet to a 5/8 inch iron rod found;
- (2) N 84°-48'-13" W, a distance of 41.15 feet to the **POINT OF BEGINNING**.

Containing 0.435 acre, more or less, and is for exception description purposes only and is not to be used as a separate and independent parcel.

Property is subject to any and all previous easements and rights-of-way of record.

The basis for bearings, described herein, is the center-line of County Highway 55 between Station 55+43 and Station 71+68.6, being N 05°-03'-45"E, and all other bearings are from angles and distances measured in a field survey by Lee Surveying and Mapping Co. on February 9, 2018

Description prepared by:



A handwritten signature in black ink that reads 'D. A. Neer'.

Daniel A. Neer
Professional Surveyor No. 8533
April 18, 2018

9800118REV

INDEXED ON MAP
6021

BASIS FOR BEARINGS:

THE BASIS FOR BEARINGS SHOWN HEREON IS THE CENTER-LINE OF COUNTY HIGHWAY 55, BEING, N 05°03'45" E. STATION 71+68.6

(LOGAN COUNTY ENGINEER'S FIELD BOOK 607, PAGE 32)

COUNTY HIGHWAY 55 (60')

C/L (BASIS FOR BEARINGS)

P.O.C. RD -688.35'

LOGAN COUNTY ENGINEER'S FIELD BOOK 607, PG. 31)

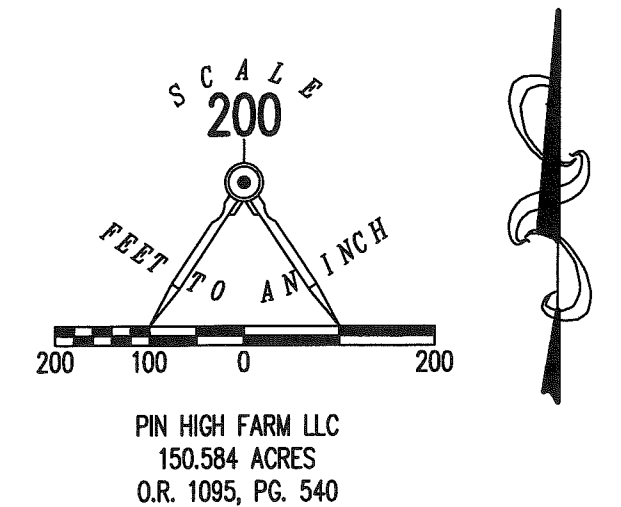
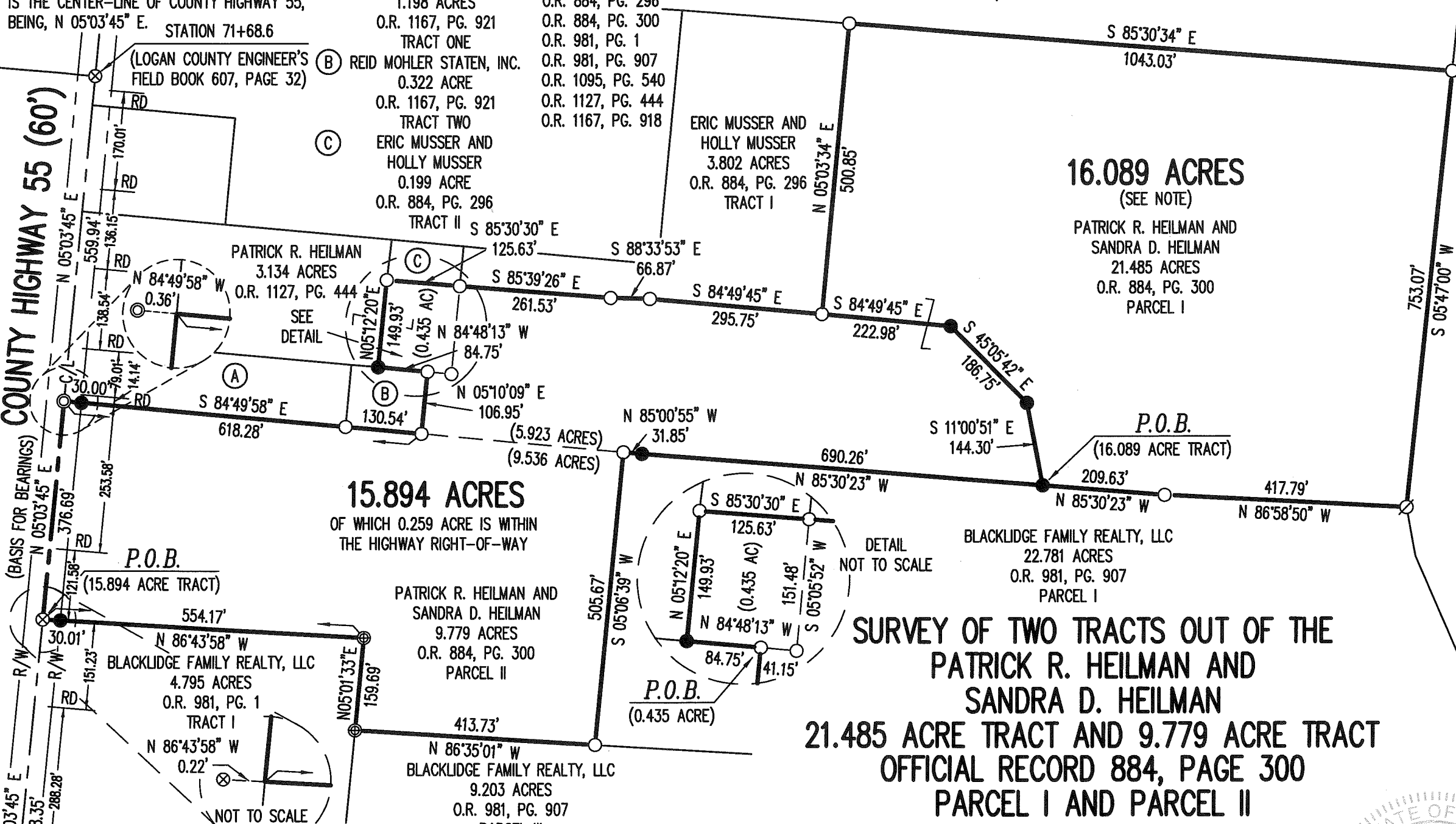
ADJOINERS:

- (A) REID MOHLER STATEN, INC. 1.198 ACRES
O.R. 1167, PG. 921 TRACT ONE
- (B) REID MOHLER STATEN, INC. 0.322 ACRE
O.R. 1167, PG. 921 TRACT TWO
- (C) ERIC MUSSER AND HOLLY MUSSER 0.199 ACRE
O.R. 884, PG. 296 TRACT II

DEED REFERENCES:

- O.R. 649, PG. 296
- O.R. 884, PG. 296
- O.R. 884, PG. 300
- O.R. 981, PG. 1
- O.R. 981, PG. 907
- O.R. 1095, PG. 540
- O.R. 1127, PG. 444
- O.R. 1167, PG. 918

DALE JOSHUA LOVETT
69 ACRES
O.R. 649, PG. 301



- LEGEND:**
- ☒ 1 INCH IRON PIPE FOUND IN A MONUMENT BOX
 - ⊗ RAILROAD SPIKE FOUND
 - ⊙ 3/4 INCH IRON PIPE FOUND
 - ⊕ 1-1/4 INCH IRON PIPE FOUND
 - ⊘ 6 INCH WOOD POST FOUND
 - 5/8 INCH IRON ROD FOUND
 - 5/8 INCH IRON ROD SET WITH PLASTIC I.D. CAP STAMPED "L-8533"
- R/W = RIGHT-OF-WAY
 C/L = CENTER-LINE
 RD = RESIDENTIAL DRIVE

SURVEYED BY:
 DANIEL A. NEER
 PROFESSIONAL SURVEYOR NO. 8533
 FEBRUARY 9, 2018
 REVISED APRIL 18, 2018 (TO DETAIL EXCEPTION)

COPYRIGHT 2018 BY:
LEE SURVEYING & MAPPING CO.
 117 North Madriver Street
 BELLEFONTAINE, OHIO 43311
 (937) 593-7335
 WWW.LSMINC.US
 surveys@lsminc.us

KSS D0118 9800118REV L-980-3

SURVEY OF TWO TRACTS OUT OF THE PATRICK R. HEILMAN AND SANDRA D. HEILMAN 21.485 ACRE TRACT AND 9.779 ACRE TRACT OFFICIAL RECORD 884, PAGE 300 PARCEL I AND PARCEL II AND THE PATRICK R. HEILMAN 3.134 ACRE TRACT OFFICIAL RECORD 1127, PAGE 444 VIRGINIA MILITARY SURVEY 3220 JEFFERSON TOWNSHIP LOGAN COUNTY, OHIO

ACCESS MANAGEMENT NOTE:
 COUNTY HIGHWAY 55 IS CLASSIFIED AS A MINOR COLLECTOR ROAD.
 MINIMUM DRIVE SPACING IS 360'.
 MINIMUM STOPPING SIGHT DISTANCE IS >495 (55 MPH)

NOTE:
 THE 16.089 ACRE PARCEL IS TO BE ATTACHED TO AN ADJOINING TRACT OF LAND AND IS NOT TO BE USED AS A SEPARATE AND INDEPENDENT PARCEL.

THIS SURVEY WAS PREPARED IN THE ABSENCE OF A COMPLETE AND ACCURATE TITLE SEARCH AND DOES NOT GUARANTEE TITLE.

2 WORKING DAYS
BEFORE YOU DIG

CALL TOLL FREE **800-362-2764**
 OHIO UTILITIES PROTECTION SERVICE.

