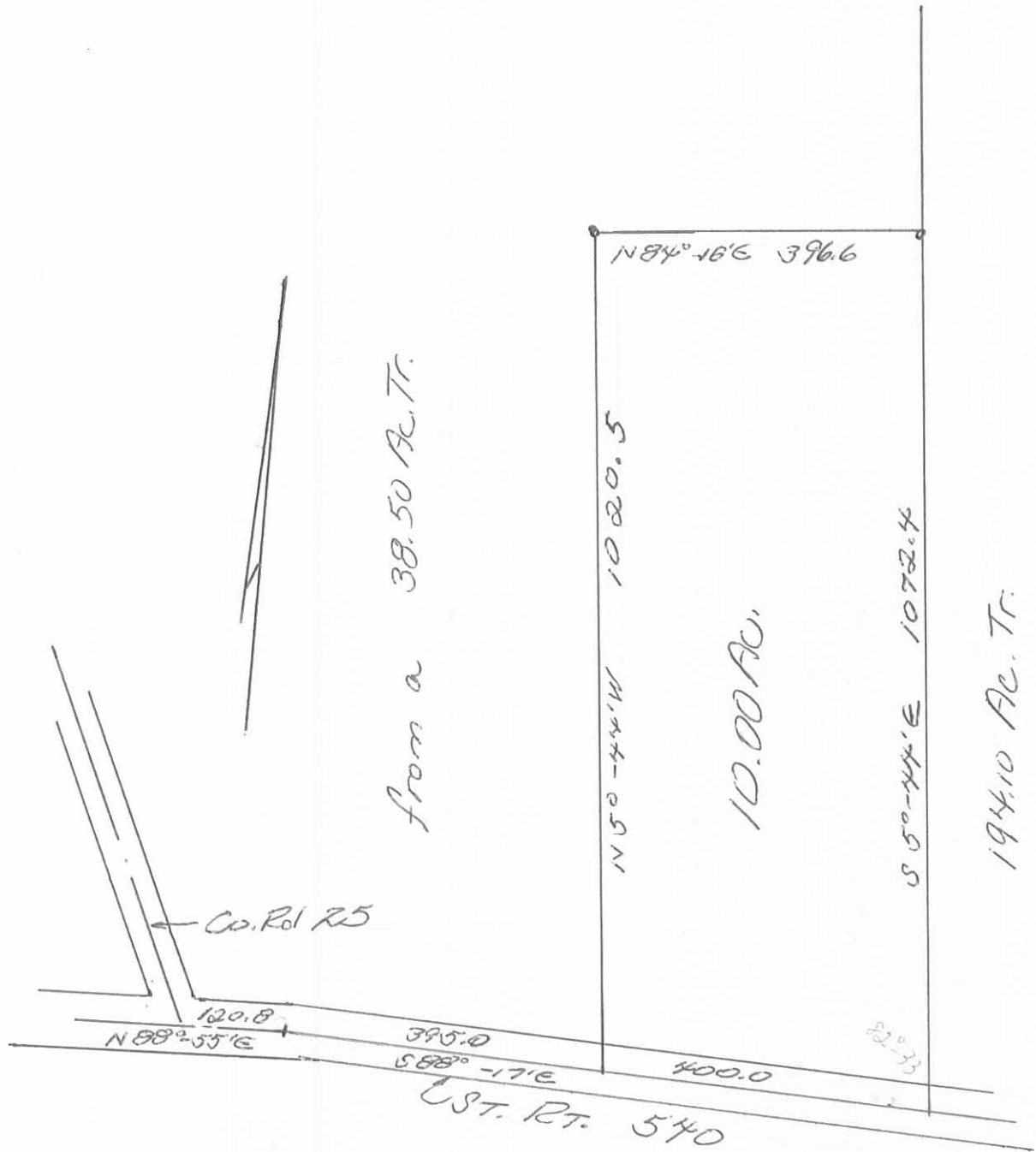


COONS FOR GREGG

JEFFERSON TWP, LOGAN CO., OHIO

V.M.S. 3439

- 1" = 200'



Owen K. Shirk
Surveyor 4271
Oct., 1973

7165 1D

INDEXED ON MAP

Coons for Gregg Survey Description
October, 1973

Being situated in Jefferson Township, Logan County, Ohio; and being a part of V.M.S. #3439.

Beginning at the intersection of the centerlines of County Road 25 and State Route 540.

Thence with the center of State Route 540 N 88° - 55'E 120.8 feet to a angle.

Thence again with the center of State Route 540 S 88° - 17'E 395.0 feet to the true point of beginning for this description.

Thence N 5° - 44'W 1020.5 feet to a iron, passing thru a iron at 30.2 feet.

Thence N 84° - 16'E 396.6 feet to a iron in the west line of a 194.10 acre tract.

Thence with the west line of said 194.10 acre tract S 5° - 44'E 1072.4 feet to a point in State Route 540, passing thru a iron at 1039.6 feet.

Thence with the center of State Route 540 N 88° - 17'W 400.0 feet to the place of beginning.

Containing 10.00 acres more or less. Being surveyed from a 38.50 acre tract.

194.10

Owen K. Shirk
Surveyor 4271

7165 1P

INDEXED ON MAP