

Lee Surveying and Mapping Co.



Farm Surveys • Lot Surveys • Topography • Subdivisions • Construction Layout

855 EAST SANDUSKY AVENUE
BELLEFONTAINE, OHIO 43311

(513) 593-5780

CLAYTON M. LEE, P.S.
JEFFREY I. LEE, P.S.

TRELL YOCUM SURVEY

Lying in V.M.S. 3139, Jefferson Township, Logan County, Ohio.

Being a retracement survey and encompassing that same land as deeded and described in Volume 385, Page 726 of the Logan County Records of Deeds which shows it to be 100 acres and being more particularly described as follows:

Beginning at a railroad spike set on the center-line of County Highway No. 5, marking the southeast corner of this survey and also being the northeast corner of the Myers 72.07 acres (Volume 397, Page 121). This point designated as being Station 26+87 in the county engineer's records (Field Book 559, Page 42).

THENCE, with a south line of the said 100 acres, the same being the north line of said 72.07 acres, N $71^{\circ}-06'-50''$ W, a distance of 1069.70 feet to a 5/8" iron rod placed at the southeast corner of a found corner stone. Passing a 5/8" iron rod set on the northwest highway line at 31.01 feet.

THENCE, with the east line of the Union Banking Company land (Volume 404, Page 787), N $11^{\circ}-56'-40''$ W, a distance of 3279.67 feet to a 5/8" iron rod set beside a corner post (Found broken corner stone replaced by post).

THENCE, with the east line of said 100 acres; the same being the west line of the Hone lands (Volume 340, Page 231 and Volume 404, Page 286), S $53^{\circ}-50'-50''$ E, a distance of 3369.54 feet to a railroad spike set on the center-line of County Highway 5, passing a 5/8" iron rod set on the north line of said highway at 3339.50 feet.


THENCE, with the center-line of said County Highway 5, S $33^{\circ}-08'$ W, to a 'PK' spike set at an angle in said highway. (Station 35+33 in county highway records), a distance of 1029.52 feet.

THENCE, continuing with the center-line of County Highway 5, S $33^{\circ}-31'-40''$ W, a distance of 845.69 feet to the point of beginning.

Containing 107.085 acres.



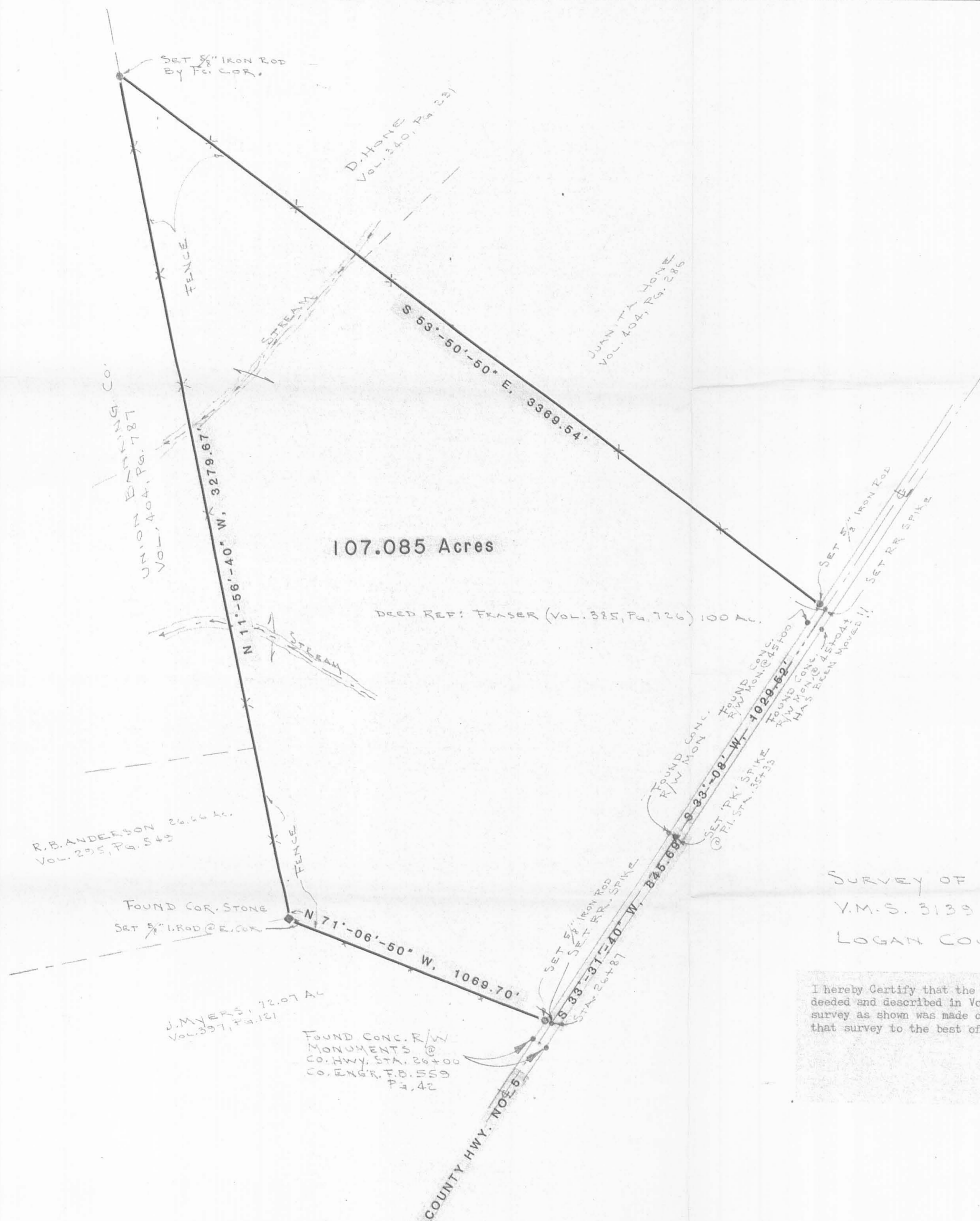
Prepared by:


Clayton M. Lee
Registered Professional Surveyor No 6181
August 10, 1985

This description prepared from an actual field survey.

ORIGINAL STAMP IN GREEN

INDEXED ON MAP
7404 1D



107.085 Acres

DEED REF: FRASER (VOL. 385, Pg. 726) 100 AC.

SURVEY OF 107.085 ACRES (100 AC-DEED)
 V.M.S. 3139, JEFFERSON TWP.,
 LOGAN COUNTY, OHIO (REFER: VOL. 385, Pg. 726)

I hereby Certify that the shown platted land is a retracement survey and encompasses that land deeded and described in Volume 385, Page 726 which shows it to encompass 100 acres; that the survey as shown was made on the ground and the measurements are true and accurate results of that survey to the best of my knowledge and belief.

Clayton M. Lee
 Clayton M. Lee
 Registered Professional Surveyor No. 6181
 August 10, 1985



INDEXED ON MAP
 7404 1P

ORIGINAL STAMP IN GREEN

8-13-85 OK R.L.R.

TOLERANCES (EXCEPT AS NOTED)	REVISIONS			DRAWN BY CM.L.	SCALE	MATERIAL
	NO.	DATE	BY			
DECIMAL	1					
±	2					
FRACTIONAL	3					
±	4			CHK'D	DATE	
ANGULAR	5			TRACED	APP'D	L-1314-2
±						