

2008-5-21-08 SMY OK

Lee Surveying and Mapping Co., Inc.

Land Surveys • Topography • Subdivisions • Construction Layout

117 N. Madriver St.
Bellefontaine OH 43311



Phone: (937) 593-7335
Fax: (937) 593-7444

PETTY 1.401 ACRES

Lying in Virginia Military Survey 6449, Jefferson Township, Logan County, Ohio.

Being out of the Richard A. Petty and Marilyn K. Petty original 31.167 acre tract as deeded and described in Official Record 63, Page 124 of the Logan County Records of Deeds and being more particularly described as follows:

Commencing on a 5/8 inch iron rod found on the intersection of the center-lines of Township Road 182 and Mount Crest Drive.

THENCE, with the center-line of Township Road 182 (50 feet wide), S 82°-42'-26"E, a distance of 866.62 feet to a railroad spike found, passing a MAG nail found at 689.95 feet.

THENCE, with the west lines of the Wesley L. Minger 1.77 acre tract (O.R. 648, Pg. 219) and the aforesaid original 31.167 acre tract, S 7°-48'-49"W, a distance of 1034.33 feet to a 5/8 inch iron rod found, passing a 5/8 inch iron rod found at 25.00 feet and a 5/8 inch iron rod set at 249.60 feet.

THENCE, with the south line of the said original 31.167 acre tract, S 82°-04'-42"E, a distance of 494.61 feet to a 5/8 inch iron rod set at the TRUE POINT OF BEGINNING.

THENCE, N 7°-57'-06"E, a distance of 305.26 feet to a 5/8 inch iron rod found.

THENCE, with the south line of the William R. Duley 1.235 acre tract (O.R. 889, Pg. 523), S 82°-02'-54"E, a distance of 200.00 feet to a 5/8 inch iron rod found.

THENCE, with the lines of the Claren P. Brown 16.935 acre tract (O.R. 74, Pg. 362), the following two courses:

S 7°-57'-06"W, a distance of 305.15 feet to a 5/8 inch iron rod found.

N 82°-04'-42"W, a distance of 200.00 feet to the point of beginning.

Containing 1.401 acres.

The basis for bearings is the center-line of Township Road 182, being S 82°-42'-26"E, and all other bearings are from angles and distances measured in a field survey by Lee Surveying and Mapping Co., Inc. on May 14, 2008.



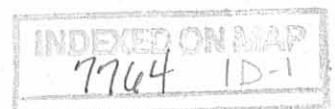
ORIGINAL STAMP IN GREEN

Description prepared by:

A handwritten signature in black ink that reads 'Will K Bruce'.

William K. Bruce
Professional Surveyor 7437
May 16, 2008

1656048



REID 5-21-08 SIMON

Lee Surveying and Mapping Co., Inc.

Land Surveys • Topography • Subdivisions • Construction Layout

117 N. Madriver St.
Bellefontaine OH 43311



Phone: (937) 593-7335
Fax: (937) 593-7444

PETTY 1.011 ACRES

Lying in Virginia Military Survey 6449, Jefferson Township, Logan County, Ohio.

Being out of the Richard A. Petty and Marilyn K. Petty 2.000 acre tract as deeded and described in Official Record 823, Page 70 of the Logan County Records of Deeds and being more particularly described as follows:

Commencing on a 5/8 inch iron rod found on the intersection of the center-lines of Township Road 182 and Mount Crest Drive.

THENCE, with the center-line of Township Road 182 (50 feet wide), S 82°-42'-26"E, a distance of 689.95 feet to a MAG nail found at the TRUE POINT OF BEGINNING.

THENCE, with the center-line of Township Road 182, S 82°-42'-26"E, a distance of 176.67 feet to a railroad spike found.

THENCE, with the west line of the Wesley L. Minger 1.77 acre tract (O.R. 648, Pg. 219), S 7°-48'-49"W, a distance of 249.60 feet to a 5/8 inch iron rod set, passing a 5/8 inch iron rod found at 25.00 feet.

THENCE, N 82°-31'-51"W, a distance of 176.66 feet to a 5/8 inch iron rod set.

THENCE, with the east line of the Jeffrey W. Blaker 2.000 acre tract (O.R. 782, Pg. 422, Exhibit B), N 7°-48'-49"E, a distance of 249.06 feet to the point of beginning, passing a 5/8 inch iron rod found at 224.06 feet.

Containing 1.011 acres, of which 0.101 acre is within the highway right-of-way.

The basis for bearings is the center-line of Township Road 182, being S 82°-42'-26"E, and all other bearings are from angles and distances measured in a field survey by Lee Surveying and Mapping Co., Inc. on May 14, 2008.

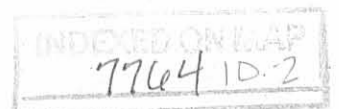


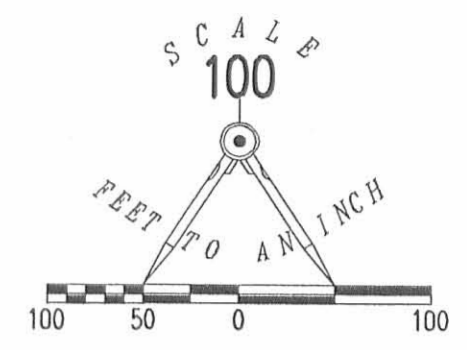
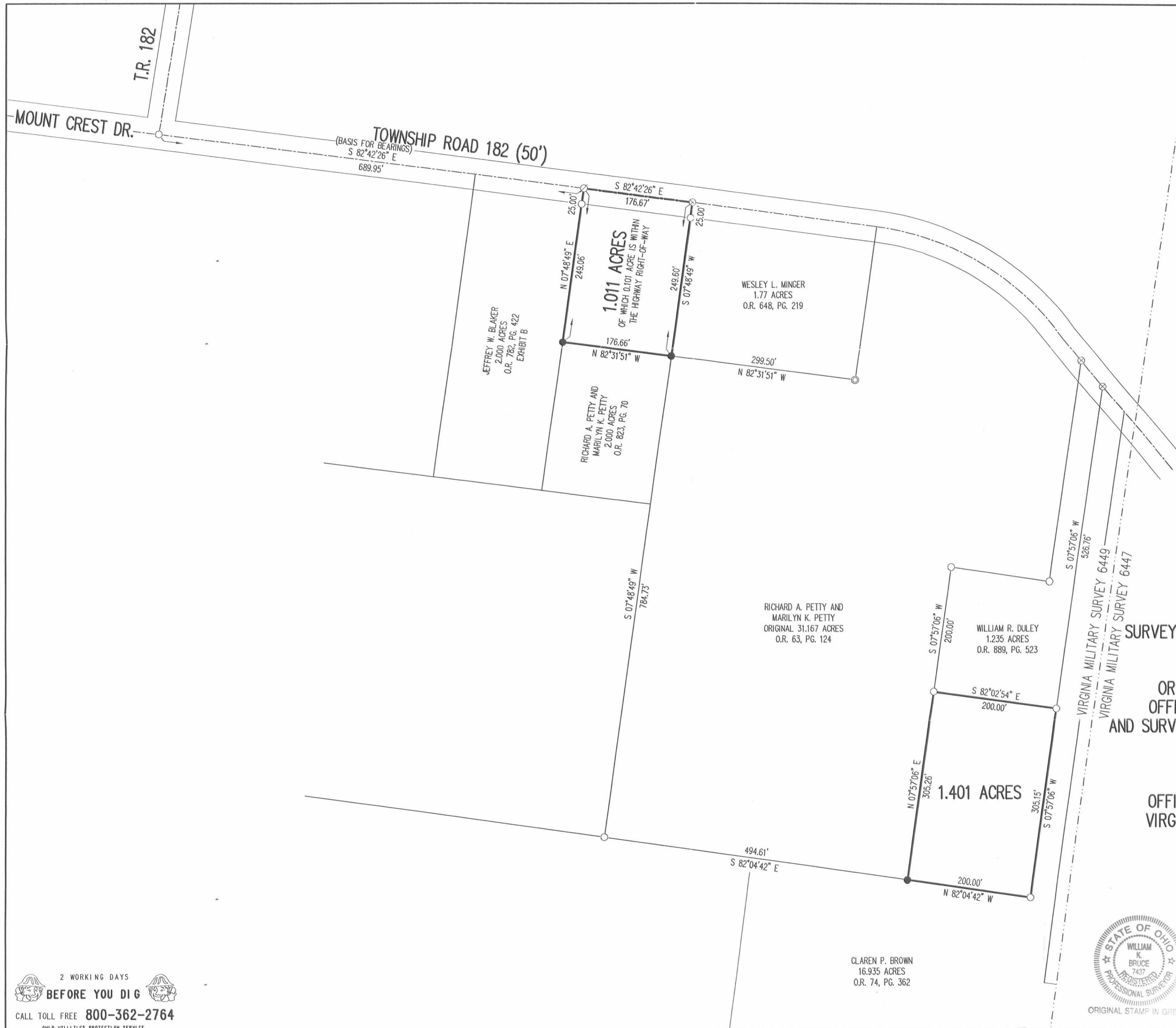
ORIGINAL STAMP IN GREEN

Description prepared by:

William K. Bruce
Professional Surveyor 7437
May 16, 2008

1656048





- LEGEND:
- ⊗ MAG NAIL FOUND
 - ⊗ RAILROAD SPIKE FOUND
 - 5/8 INCH IRON ROD FOUND
 - 5/8 INCH IRON ROD SET
 - ⊙ 1 INCH IRON PIPE FOUND

SURVEY OF 1.401 ACRES OUT OF THE RICHARD A. PETTY AND MARILYN K. PETTY ORIGINAL 31.167 ACRE TRACT OFFICIAL RECORD 63, PAGE 124 AND SURVEY OF 1.011 ACRES OUT OF THE RICHARD A. PETTY AND MARILYN K. PETTY 2,000 ACRE TRACT OFFICIAL RECORD 823, PAGE 70 VIRGINIA MILITARY SURVEY 6449 JEFFERSON TOWNSHIP LOGAN COUNTY, OHIO

SURVEYED BY:
William K. Bruce
WILLIAM K. BRUCE
PROFESSIONAL SURVEYOR 7437
MAY 14, 2008



COPYRIGHT 2008 BY:
LEE SURVEYING & MAPPING CO., INC.
117 North Madriver Street
BELLEFONTAINE, OHIO 43311
(937) 593-7335
surveys@lsminc.us
KSS D0508 1656048 L-1656-2

2 WORKING DAYS
BEFORE YOU DIG
CALL TOLL FREE **800-362-2764**
OHIO UTILITIES PROTECTION SERVICE

INDEXED
7764 IP

Lee Surveying and Mapping Co.



Farm Surveys • Lot Surveys • Topography • Subdivisions • Construction Layout

855 EAST SANDUSKY AVENUE
BELLEFONTAINE, OHIO 43311

(513) 593-5780

CLAYTON M. LEE, P.S.
JEFFREY I. LEE, P.S.

DAVIS TO PETTY

Lying in V.M.S. 6449, Jefferson Township, Logan County, Ohio.

Being out of the northeast corner of that land in the name of Robert H. Davis as deeded and described in Volume 379, Page 523 of the Logan County Records of Deeds and being more particularly described as follows:

Beginning at a railroad spike found on the center-line of Township Road 182, marking the northeast corner of the Gary Kuaile 1.77 acre tract and designated as being Station 56+54.29 of the new location of said Township Road 182. (County Engineer's Field Book 607).

THENCE, with the said new location, on a curve to the right, having a radius of 440.74 feet; a central angle of 46°-53' and a length of 361.03 feet (Chord = S 59°-04'-15" E, 351.02 feet) to a 'PK' nail at the P.C. of said curve.

THENCE, continuing with said center-line, S 39°-35'-10" E, a distance of 154.76 feet to a 'PK' nail at the northeast corner of grantor's property.

THENCE, with the grantor's east property line, S 7°-57'-06" W, parallel to and 20 feet westerly from the east line of V.M.S. 6449, a distance of 925.86 feet, along the west side of a 20 foot wide lane (Volume 328, Page 706) to a point within a 36" tree.

THENCE, at right angles and with the south terminus of said lane, S 82°-02'-54" E, a distance of 20.00 feet to a corner stone (found) on the east line of V.M.S. 6449.

THENCE, with said V.M.S. line, S 7°-57'-06" W, a distance of 1148.82 feet to a ½" iron rod.

THENCE, N 82°-03' W, a distance of 644.61 feet to a ½" iron rod.

THENCE, at right angles, N 7°-57' E, a distance of 387.27 feet to a ½" iron rod set on a fence line.

THENCE, with said fence line, the following 4 bearings and distances:

S 83°-32' E, 132.10 feet to a ½" iron rod.

N 7°-51'-30" E, 888.55 feet to a ½" iron rod.

N 82°-04' W, 241.05 feet to a ½" iron rod.

N 7°-54'-30" E, 784.73 feet to a 1" iron pipe found on the southwest corner of the Kuaile 1.77 acre tract.

THENCE, with the boundary of the said 1.77 acre tract, the following 2 bearings and distances:

S 82°-33' E, 298.27 feet to a 1" iron pipe (found)

N 7°-58'-24" E, 249.71 feet to the point of beginning.

Containing 31.167 acres.

This description prepared from an actual field survey.

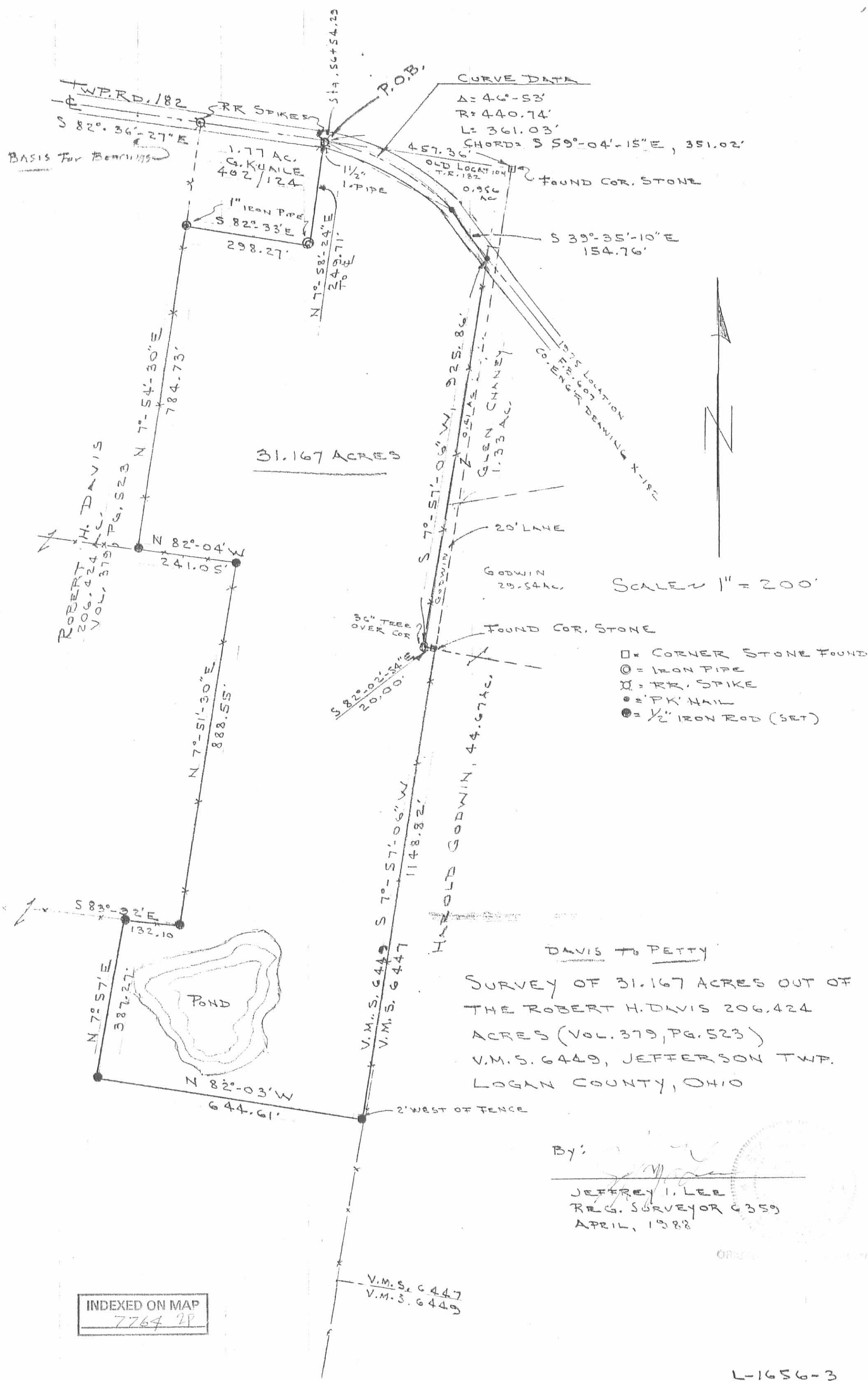
Basis for bearings: Center-line of Township Road 182 (S 82°-36'-27" E).

Prepared by:

Clayton M. Lee
Registered Professional Surveyor No. 6181
April 28, 1988



INDEXED ON MAP
7764 2D



CURVE DATA
 $\Delta = 46^{\circ}-53'$
 $R = 440.74'$
 $L = 361.03'$
 CHORD = $S 59^{\circ}-04'-15'' E, 351.02'$

31.167 ACRES

SCALE 1" = 200'

- = CORNER STONE FOUND
- ⊙ = IRON PIPE
- ⊗ = RR SPIKE
- = PK. NAIL
- ⦿ = 1/2" IRON ROD (SET)

DAVIS TO PETTY
 SURVEY OF 31.167 ACRES OUT OF
 THE ROBERT H. DAVIS 206.424
 ACRES (VOL. 379, PG. 523)
 V.M.S. 6449, JEFFERSON TWP.
 LOGAN COUNTY, OHIO

By: *[Signature]*
 JEFFREY I. LEE
 REG. SURVEYOR C359
 APRIL, 1988

INDEXED ON MAP
 7764 29

Lee Surveying and Mapping Co.



Farm Surveys • Lot Surveys • Topography • Subdivisions • Construction Layout

855 EAST SANDUSKY AVENUE
BELLEFONTAINE, OHIO 43311

(513) 593-5780

CLAYTON M. LEE, P.S.
JEFFREY I. LEE, P.S.

PETTY 16.935 ACRES

Lying in V.M.S. 6449, Jefferson Township, Logan County, Ohio.

Being out of that 31.167 acres in the name of Richard A. Petty as deeded and described in O.R. 63, Page 124 of the Logan County Records of Deeds and being more particularly described as follows:

Beginning at a 'PK' nail found marking the northeast corner of the said 31.167 acres on the center-line of Township Road 182.

THENCE, with the east line of said 31.167 acre tract, the following 3 bearings and distances:

S 7°-57'-06" W, 925.86 feet to a point within a 36 inch tree.

S 82°-02'-54" E, 20.00 feet to a corner stone (found).

S 7°-57'-06" W, 1148.82 feet to a 1/2" iron rod (found) marking the southeast corner of said 31.167 acres.

THENCE, with the south line of said 31.167 acres, N 82°-03' W, 644.61 feet to a 1/2" iron rod (found) at the southwest corner of said 31.167 acre tract.

THENCE, with the west line of said 31.167 acres, the following 3 bearings and distances:

N 7°-57' E, 387.27 feet to a 1/2" iron rod (found).

S 83°-32' E, 132.10 feet to a 1/2" iron rod (found).

N 7°-51'-30" E, 888.55 feet to a 1/2" iron rod (found).

THENCE, through the 31.167 acre tract, S 82°-04' E, 454.01 feet to a 5/8" iron rod set 40 feet westerly, at right angles from the east line of said 31.167 acre tract.

THENCE, parallel to and 40 feet westerly from the said east line, N 7°-57'-06" E, 831.91 feet to a railroad spike set on the center-line of Township Road 182.

THENCE, with said center-line, S 39°-35'-10' E, a distance of 54.22 feet to the point of beginning.

Containing 16.935 acres.

This description prepared from an actual field survey.

Basis for bearings: Center-line Township Road 182 = S 39°-35'-10" E.

Prepared by:

Clayton M. Lee

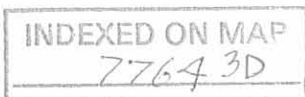
Clayton M. Lee

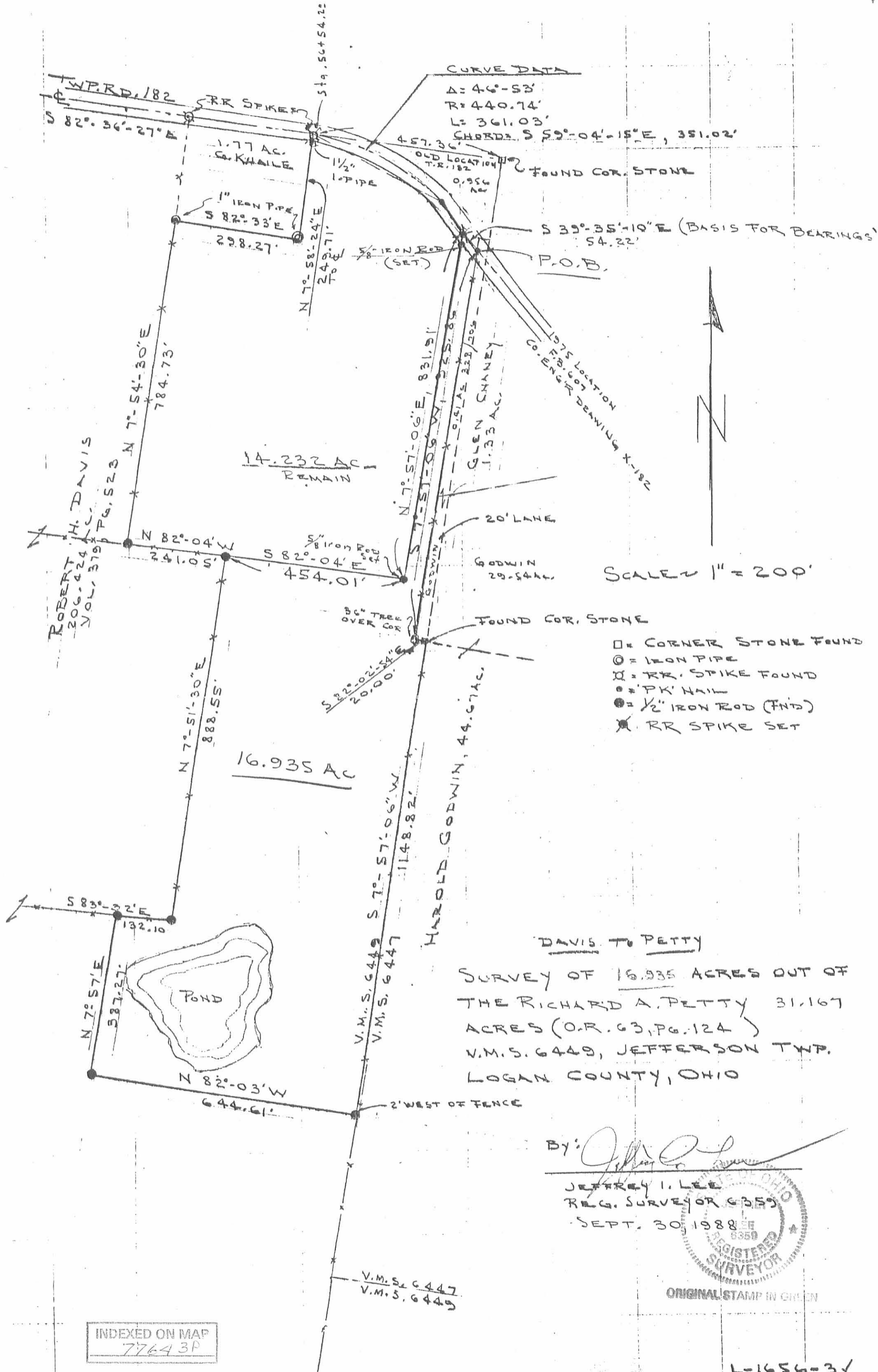
Registered Professional Surveyor No. 6181

October 1, 1988



ORIGINAL STAMP IN GREEN





SCALE 1" = 200'

- = CORNER STONE FOUND
- = IRON PIPE
- ⊗ = RR SPIKE FOUND
- = P.K. NAIL
- ⊕ = 1/2" IRON ROD (FND)
- ⊗ = RR SPIKE SET

DAVIS TO PETTY
 SURVEY OF 16.935 ACRES OUT OF
 THE RICHARD A. PETTY 31.167
 ACRES (O.R. 63, PG. 124)
 V.M.S. 6449, JEFFERSON TWP.
 LOGAN COUNTY, OHIO

By: *Jeffrey I. Lee*
 JEFFREY I. LEE
 REG. SURVEYOR 6359
 SEPT. 30, 1988



ORIGINAL STAMP IN GREEN

INDEXED ON MAP
 7764 3P

L-1656-31

REV'D 3-9-05 SMM OK

Lee Surveying and Mapping Co., Inc.

Land Surveys • Topography • Subdivisions • Construction Layout

117 N. Madriver St.
Bellefontaine OH 43311



Phone: (937) 593-7335
Fax: (937) 593-7444

1975 - 2005 - 30 YEARS OF EXCELLENCE
ZIMMERLY
1.112 ACRE

Lying in Virginia Military Survey 6449, Jefferson Township, Logan County, Ohio.

Being out of the Kelli S. Zimmerly 44.894 acre tract deeded in Official Record 674, Page 82, of the Logan County Records of Deeds and being more particularly described as follows:

Beginning at a railroad spike found at the intersection of center-lines of Mount Crest Drive (50 feet wide) and County Highway 55 (60 feet wide).

THENCE, with the west line of Virginia Military Survey 6449 and the center-line of County Highway 55, S 8°-20'-03"W, a distance of 338.52 feet to a MAG nail found.

THENCE, with the west line of Virginia Military Survey 6449 and the center-line of County Highway 55, S 6°-40'-27"W, a distance of 671.83 feet to a railroad spike found.

THENCE, with the west line of Virginia Military Survey 6449 and the center-line of County Highway 55, S 7°-29'-52"W, a distance of 1054.73 feet to a railroad spike found at THE TRUE POINT OF BEGINNING.

THENCE, with the south line of the Michael B. Stolly and Nancy J. Stolly 1.10 acre tract (O.R. 526, Pg. 453) and the south line of the Michael B. Stolly and Nancy J. Stolly 0.79 acre tract (O.R. 526, Pg. 455), S 85°-46'-55"E, a distance of 293.90 feet to a 6 inch wood corner post found, passing a 5/8 inch iron rod found at 30.05 feet.

THENCE, with the west line of the Michael B. Stolly and Nancy Jill Stolly 13.845 acre tract (O.R. 746, Pg. 390), S 7°-29'-52"W, a distance of 180.26 feet to a 5/8 inch iron rod set.

THENCE, with the north line of the Susan E. Rhyne, or her successor, as trustee 74.742 acre tract (O.R. 644, Pg. 530), N 79°-52'-39"W, a distance of 293.72 feet to a MAG nail set, passing a 5/8 inch iron rod found at 263.69 feet.

THENCE, with the west line of Virginia Military Survey 6449 and the center-line of County Highway 55, N 7°-29'-52"E, a distance of 150.00 feet to the point of beginning.

Containing 1.112 acres of which 0.104 acre is within the highway right-of-way.

The basis for bearings is the west line of Virginia Military Survey 6449 and the center-line of County Highway 55 being N 7°-29'-52"E, and all other bearings are from angles and distances measured in a field survey by Lee Surveying and Mapping Co., Inc. on March 3, 2004



ORIGINAL STAMP IN GREEN

Description prepared by:

A handwritten signature in black ink, appearing to read 'J. Lee'.

Jeffrey I. Lee
Professional Surveyor 6359
March 4, 2005

L-1656035-2



REC ID 39-05 8MM OK
Lee Surveying and Mapping Co., Inc.

Land Surveys • Topography • Subdivisions • Construction Layout

117 N. Madriver St.
Bellefontaine OH 43311



Phone: (937) 593-7335
Fax: (937) 593-7444

1975 - 2005 - 30 YEARS OF EXCELLENCE
ZIMMERLY
0.921 ACRE

Lying in Virginia Military Survey 6449, Jefferson Township, Logan County, Ohio.

Being out of the Kelli S. Zimmerly 44.894 acre tract deeded in Official Record 674, Page 82, of the Logan County Records of Deeds and being more particularly described as follows:

Beginning at a railroad spike found at the intersection of center-lines of Mount Crest Drive (50 feet wide) and County Highway 55 (60 feet wide).

THENCE, with the west line of Virginia Military Survey 6449 and the center-line of County Highway 55, S 8°-20'-03"W, a distance of 338.52 feet to a MAG nail found.

THENCE, with the west line of Virginia Military Survey 6449 and the center-line of County Highway 55, S 6°-40'-27"W, a distance of 671.83 feet to a railroad spike found.

THENCE, with the west line of Virginia Military Survey 6449 and the center-line of County Highway 55, S 7°-29'-52"W, a distance of 1204.73 feet to a MAG Nail found.

THENCE, with the north line of the Susan E. Rhyne, or her successor, as trustee 74.742 acre tract (O.R. 644, Pg. 530), S 79°-52'-39"E, a distance of 293.72 feet to a 5/8 inch iron rod set at the TRUE POINT OF BEGINNING, passing a 5/8 inch iron rod found at 30.03 feet.

THENCE, N 7°-29'-52"E, a distance of 60.06 feet to a 5/8 inch iron rod found.

THENCE, S 79°-52'-39"E, a distance of 667.62 feet to a 5/8 inch iron rod found.

THENCE, with the west line of the aforesaid 44.894 acre tract extended, S 5°-24'-44"W, a distance of 60.20 feet to a 5/8 inch iron rod set.

THENCE, with the north line of the aforesaid 74.742 acre tract, N 79°-52'-39"W, a distance of 669.82 feet to the point of beginning.

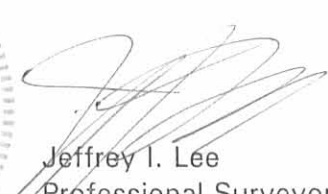
Containing 0.921 acre.

The basis for bearings is the west line of Virginia Military Survey 6449 and the center-line of County Highway 55 being N 7°-29'-52"E, and all other bearings are from angles and distances measured in a field survey by Lee Surveying and Mapping Co., Inc. on March 3, 2004

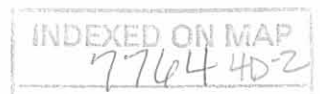
Description prepared by:



ORIGINAL STAMP IN GREEN


Jeffrey I. Lee
Professional Surveyor 6359
March 4, 2005

L-1656035-2

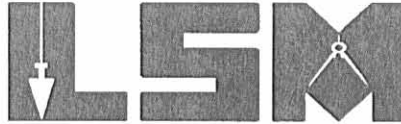


REC'D 3-11-05 8M OK

Lee Surveying and Mapping Co., Inc.

Land Surveys • Topography • Subdivisions • Construction Layout

117 N. Madriver St.
Bellefontaine OH 43311



Phone: (937) 593-7335
Fax: (937) 593-7444

1975 - 2005 - 30 YEARS OF EXCELLENCE STOLLY 2.033 ACRE

Lying in Virginia Military Survey 6449, Jefferson Township, Logan County, Ohio.

Being part of the Michael B. Stolly and Nancy J. Stolly 2.000 acre tract deeded in Official Record 642, Page 736 Tract I, and part of the Michael B. Stolly and Nancy Jill Stolly 13.845 acre tract as deeded in Official Record 746, Page 390 of the Logan County Records of Deeds and being more particularly described as follows:

Beginning at a railroad spike found at the intersection of center-lines of Mount Crest Drive (50 feet wide) and County Highway 55 (60 feet wide).

THENCE, with the west line of Virginia Military Survey 6449 and the center-line of County Highway 55, S 8°-20'-03"W, a distance of 338.52 feet to a MAG nail found.

THENCE, with the west line of Virginia Military Survey 6449 and the center-line of County Highway 55, S 6°-40'-27"W, a distance of 654.03 feet to a MAG nail found at THE TRUE POINT OF BEGINNING.

THENCE, with the south line of the Christopher David Vance and Melissa A. Vance 9.692 acre tract (O.R. 645, Pg. 216, Tract II), S 82°-27' 43"E, a distance of 844.65 feet to a 5/8 inch iron rod set, passing a 5/8 inch iron found at 30.00 feet.

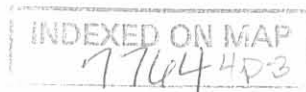
THENCE, with the west line of the Kelli S. Zimmerly 44.894 acre tract (O.R. 674, Pg. 82), S 5°-24'-44"W, a distance of 60.04 feet to a 5/8 inch iron rod set.

THENCE, N 82°-27'-43"W, a distance of 426.28 feet to a 5/8 inch iron rod set, passing a 5/8 inch iron rod set at 375.58 feet.

THENCE, S 7°-17'-16"W, a distance of 90.00 feet to a 5/8 inch iron rod set.

THENCE, N 82°-27'-43"W, a distance of 420.63 feet to a MAG nail set, passing a 5/8 inch iron rod set at 390.63 feet.

THENCE, with the west line of Virginia Military Survey 6449 and the center-line of County Highway 55, N 7°-29'-52"E, a distance of 132.20 feet to a railroad spike found.



Lee Surveying and Mapping Co., Inc.

Land Surveys • Topography • Subdivisions • Construction Layout

117 N. Madriver St.
Bellefontaine OH 43311



Phone: (937) 593-7335
Fax: (937) 593-7444

1975 - 2005 - 30 YEARS OF EXCELLENCE

THENCE, with the west line of Virginia Military Survey 6449 and the center-line of County Highway 55, N 6°-40'-27"E, a distance of 17.80 feet to the point of beginning.

Containing 2.033 acres of which 0.103 acre is within the highway right-of-way.

The basis for bearings is the west line of Virginia Military Survey 6449 and the center-line of County Highway 55 being N 7°-29'-52"E, and all other bearings are from angles and distances measured in a field survey by Lee Surveying and Mapping Co., Inc. on March 3, 2005

Reserving to the grantors, their heirs and assigns, a non-exclusive ingress/egress easement over the above 2.033 acre tract.



ORIGINAL STAMP IN GREEN

Description prepared by:

A handwritten signature in black ink, appearing to read 'J. Lee', written over the typed name and title.

Jeffrey I. Lee
Professional Surveyor 6359
March 4, 2005

L-1656035-2



REC'D 3-9-05 8MMOK
Lee Surveying and Mapping Co., Inc.

Land Surveys • Topography • Subdivisions • Construction Layout

117 N. Madriver St.
Bellefontaine OH 43311



Phone: (937) 593-7335
Fax: (937) 593-7444

1975 - 2005 - 30 YEARS OF EXCELLENCE
STOLLY

0.425 ACRE INGRESS/EGRESS EASEMENT

Lying in Virginia Military Survey 6449, Jefferson Township, Logan County, Ohio.

Being an ingress/egress easement over the Michael B. Stolly and Nancy Jill Stolly 13.845 acre tract deeded in Official Record 746, Page 390, of the Logan County Records of Deeds and being more particularly described as follows:

Beginning at a railroad spike found at the intersection of center-lines of Mount Crest Drive (50 feet wide) and County Highway 55 (60 feet wide).

THENCE, with the west line of Virginia Military Survey 6449 and the center-line of County Highway 55, S 8°-20'-03"W, a distance of 338.52 feet to a MAG nail found.

THENCE, with the west line of Virginia Military Survey 6449 and the center-line of County Highway 55, S 6°-40'-27"W, a distance of 671.83 feet to a railroad spike found.

THENCE, with the west line of Virginia Military Survey 6449 and the center-line of County Highway 55, S 7°-29'-52"W, a distance of 722.20 feet to a MAG nail found at THE TRUE POINT OF BEGINNING.

THENCE, with the south line of the Michael B. Stolly and Nancy J. Stolly 2.000 acre tract (O.R. 642, Pg. 736 Tract IV), S 82°-27'-43"E, a distance of 315.74 feet to a 5/8 inch iron rod set, passing a 5/8 inch iron rod found at 30.00 feet.

THENCE, S 11°-32'-45"W, a distance of 58.28 feet to a 5/8 inch iron rod found.

THENCE, with the north line of the Michael B. Stolly and Nancy J. Stolly 0.79 acre tract (O.R. 526, Pg. 455) and 1.10 acre tract (O.R. 526, Pg. 453), N 82°-48'-15"W, a distance of 311.63 feet to a railroad spike found, passing a 5/8 inch iron rod found at 281.63 feet.

THENCE, with the west line of Virginia Military Survey 6449 and the center-line of County Highway 55, N 7°-29'-52"E, a distance of 60.00 feet to the point of beginning.

Containing 0.425 acre of which 0.041 acre is within the highway right-of-way.

The basis for bearings is the west line of Virginia Military Survey 6449 and the center-line of County Highway 55 being N 7°-29'-52"E, and all other bearings are from angles and distances measured in a field survey by Lee Surveying and Mapping Co., Inc. on March 3, 2004

Description prepared by:



ORIGINAL STAMP IN GREEN

A handwritten signature in black ink, appearing to read 'Jeffrey I. Lee'.
Jeffrey I. Lee
Professional Surveyor 6359
March 4, 2005

L-1656035-2



Lee Surveying and Mapping Co., Inc.

Land Surveys • Topography • Subdivisions • Construction Layout

117 N. Madriver St.
Bellefontaine OH 43311



Phone: (937) 593-7335
Fax: (937) 593-7444

1975 - 2005 - 30 YEARS OF EXCELLENCE STOLLY 19.811 ACRE

Lying in Virginia Military Survey 6449, Jefferson Township, Logan County, Ohio.

Being out of the Michael B. Stolly and Nancy Jill Stolly 13.845 acre tract deeded and described in Official Record 746, Page 390 of the Logan County Records of Deeds, and part of a 2.000 acre tract and all of 2.000 acre tracts as deeded and described in Official Record 642, Page 736, Tracts I, II, III, and IV consecutively of the Logan County Records of Deeds and being more particularly described as follows:

Beginning at a railroad spike found at the intersection of center-lines of Mount Crest Drive (50 feet wide) and County Highway 55 (60 feet wide).

THENCE, with the west line of Virginia Military Survey 6449 and the center-line of County Highway 55, S 8°-20'-03"W, a distance of 338.52 feet to a MAG nail found.

THENCE, with the west line of Virginia Military Survey 6449 and the center-line of County Highway 55, S 6°-40'-27"W, a distance of 671.83 feet to a railroad spike found.

THENCE, with the west line of Virginia Military Survey 6449 and the center-line of County Highway 55, S 7°-29'-52"W, a distance of 132.20 feet to a MAG nail set at THE TRUE POINT OF BEGINNING.

THENCE, S 82°-27'-43"E, a distance of 420.63 feet to a 5/8 inch iron rod set, passing a 5/8 inch iron rod set at 30.00 feet.

THENCE, N 7°-17'-16"E, a distance of 90.00 feet to a 5/8 inch iron rod set.

THENCE, S 82°-27'-43"E, a distance of 426.26 feet to a 5/8 inch iron rod set, passing a 5/8 inch iron rod set at 50.70 feet.

THENCE, with the lines of the Kelli S. Zimmerly 44.894 acre tract (O.R. 674, Pg. 82) the following five courses:

S 5°-24'-44"W, a distance of 610.87 feet to a 5/8 inch iron rod found.

S 84°-35'-16"E, a distance of 71.98 feet to a 5/8 inch iron rod found.

S 5°-24'-44"W, a distance of 538.40 feet to a 5/8 inch iron rod found.

INDEXED ON MAP
7764 4D-6

Lee Surveying and Mapping Co., Inc.

Land Surveys • Topography • Subdivisions • Construction Layout

117 N. Madriver St.
Bellefontaine OH 43311



Phone: (937) 593-7335
Fax: (937) 593-7444

1975 - 2005 - 30 YEARS OF EXCELLENCE

N 79°-52'-39"W, a distance of 667.62 feet to a 5/8 inch iron rod found.

N 7°-29'-52"E, a distance of 120.20 feet to a 6 inch wood corner post found.

THENCE, with the east line of the Michael B. Stolly and Nancy J. Stolly 0.79 acre tract (O.R. 526, Pg. 455), N 11°-32'-45"E, a distance of 258.00 feet to a 5/8 inch iron rod found.

THENCE, with the north line of said 0.79 acre tract and with the north line of the Michael B. Stolly and Nancy J. Stolly 1.10 acre tract (O.R. 526, Pg. 453), N 82°-48'-15"W, a distance of 311.63 feet to a railroad spike found, passing a 5/8 inch iron rod found at 281.63 feet.

THENCE, with the west line of Virginia Military Survey 6449 and the center-line of County Highway 55, N 7°-29'-52"E, a distance of 650.00 feet to the point of beginning.

Containing 19.811 acres of which 0.446 acre is within the highway right-of-way.

The basis for bearings is the west line of Virginia Military Survey 6449 and the center-line of County Highway 55 being N 7°-29'-52"E, and all other bearings are from angles and distances measured in a field survey by Lee Surveying and Mapping Co., Inc. on March 3, 2004

Description prepared by:



ORIGINAL STAMP IN GREEN

A handwritten signature in black ink, appearing to read 'Jeffrey I. Lee'.

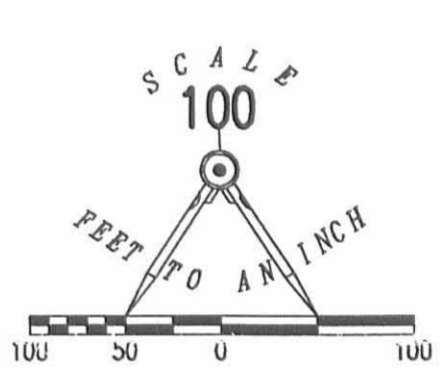
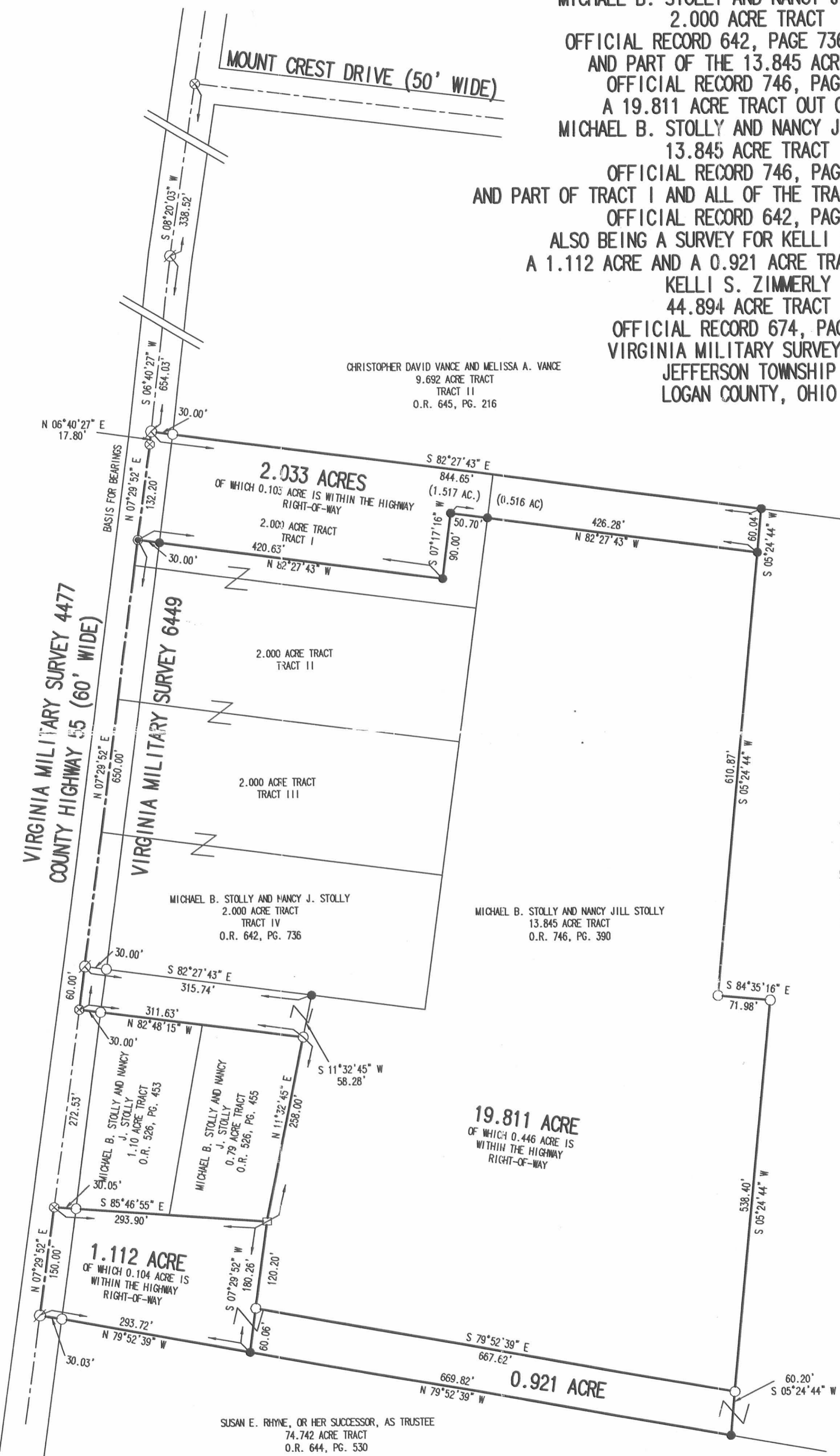
Jeffrey I. Lee
Professional Surveyor 6359
March 4, 2005
Revised November 29, 2005

L-1656035-2

INDEXED ON MAP
177644D-7

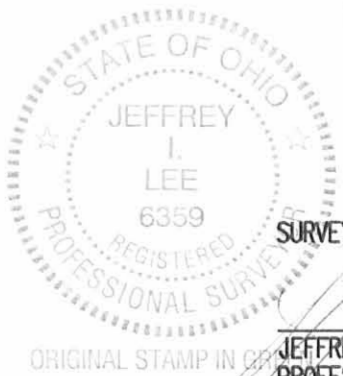
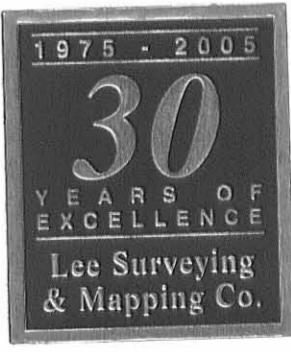
2005 2-2-05 6:11 AM

A SURVEY OF TWO TRACTS FOR MICHAEL B. STOLLY AND NANCY J. STOLLY
 2.033 ACRE TRACT OUT OF THE
 MICHAEL B. STOLLY AND NANCY JILL STOLLY
 2.000 ACRE TRACT
 OFFICIAL RECORD 642, PAGE 736, TRACT I
 AND PART OF THE 13.845 ACRE TRACT
 OFFICIAL RECORD 746, PAGE 390
 A 19.811 ACRE TRACT OUT OF THE
 MICHAEL B. STOLLY AND NANCY JILL STOLLY
 13.845 ACRE TRACT
 OFFICIAL RECORD 746, PAGE 390
 AND PART OF TRACT I AND ALL OF THE TRACTS II, III, AND IV
 OFFICIAL RECORD 642, PAGE 736
 ALSO BEING A SURVEY FOR KELLI S. ZIMMERLY
 A 1.112 ACRE AND A 0.921 ACRE TRACT OUT OF THE
 KELLI S. ZIMMERLY
 44.894 ACRE TRACT
 OFFICIAL RECORD 674, PAGE 82
 VIRGINIA MILITARY SURVEY 6449
 JEFFERSON TOWNSHIP
 LOGAN COUNTY, OHIO



- LEGEND
- 5/8 INCH IRON ROD SET
 - 5/8 INCH IRON ROD FOUND
 - ⊙ MAG NAIL SET
 - ⊗ MAG NAIL FOUND
 - ⊗ RAILROAD SPIKE FOUND
 - 6 INCH WOOD CORNER POST FOUND

KELLI S. ZIMMERLY
 44.894 ACRE TRACT
 O.R. 674, PG. 82



SURVEYED BY:
 JEFFREY I. LEE
 PROFESSIONAL SURVEYOR 6359
 MARCH 3, 2005

COPYRIGHT 2005 BY:
LEE SURVEYING & MAPPING CO., INC.
 117 North Madriver Street
 BELLEFONTAINE, OHIO 43311
 (937) 593-7335
 ADW D0305 1656035 L-1656035-2

2 WORKING DAYS
BEFORE YOU DIG
 CALL TOLL FREE **800-362-2764**
 OHIO UTILITIES PROTECTION SERVICE

INDEXED ON MAP
 7764 4P

REVISED 8-24-06 SMM OK

Lee Surveying and Mapping Co., Inc.

Land Surveys • Topography • Subdivisions • Construction Layout

117 N. Madriver St.
Bellefontaine OH 43311



Phone: (937) 593-7335
Fax: (937) 593-7444

1975 - 2005 - 30 YEARS OF EXCELLENCE
STOLLY
5.196 ACRES

Lying in Virginia Military Survey 6449, Jefferson Township, Logan County, Ohio.

Being all of the remainder of the Michael B. Stolly and Nancy J. Stolly 2.000 acre tract (Tract I), and all of the 2.000 acre tract (Tract II) as deeded in Official Record 642, Page 736, and part of the Michael B. Stolly and Nancy Jill Stolly 13.845 acre tract as deeded in Official Record 746, Page 390 of the Logan County Records of Deeds and being more particularly described as follows:

Commencing at a railroad spike found at the intersection of center-lines of Mount Crest Drive (50 feet wide) and County Highway 55 (60 feet wide).

THENCE, with the west line of Virginia Military Survey 6449 and the center-line of County Highway 55, S 8°-20'-03"W, a distance of 338.52 feet to a MAG nail found.

THENCE, with the west line of Virginia Military Survey 6449 and the center-line of County Highway 55, S 6°-40'-27"W, a distance of 671.83 feet to a railroad spike found.

THENCE, with the west line of Virginia Military Survey 6449 and the center-line of County Highway 55, S 7°-29'-52"W, a distance of 132.20 feet to a MAG nail set at the TRUE POINT OF BEGINNING.

THENCE, with the lines of the Kelli S. Zimmerly 2.033 acre tract (O.R. 802, Pg. 72) the following three courses:

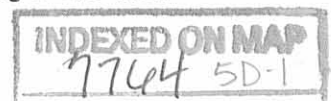
S 82°-27'-43"E, a distance of 420.63 feet to a 5/8 inch iron rod set, passing a 5/8 inch iron rod set at 30.00 feet.

N 7°-17'-16"E, a distance of 90.00 feet to a 5/8 inch iron rod set.

S 82°-27'-43"E, a distance of 426.28 feet to a 5/8 inch iron rod set, passing a 5/8 inch iron rod set at 50.70 feet.

THENCE, with the west line of the Kelli S. Zimmerly 44.894 acre tract (O.R. 674, Pg. 82), S 5°-24'-44"W, a distance of 310.21 feet to a 5/8 inch iron rod set.

THENCE, N 82°-27'-43"W, a distance of 857.87 feet to a MAG nail set, passing a 5/8 inch iron rod set at 827.87 feet.



Lee Surveying and Mapping Co., Inc.

Land Surveys • Topography • Subdivisions • Construction Layout

117 N. Madriver St.
Bellefontaine OH 43311



Phone: (937) 593-7335
Fax: (937) 593-7444

1975 - 2005 - 30 YEARS OF EXCELLENCE

THENCE, with the west line of Virginia Military Survey 6449 and the center-line of County Highway 55, N 7°-29'-52"E, a distance of 220.00 feet to the point of beginning.

Containing 5.196 acres of which 0.152 acre is within the highway right-of-way.

The basis for bearings is the west line of Virginia Military Survey 6449 and the center-line of County Highway 55 being N 7°-29'-52"E, and all other bearings are from angles and distances measured in a field survey by Lee Surveying and Mapping Co., Inc. on March 3, 2004 and August 22, 2006.



Description prepared by:

A handwritten signature in black ink, appearing to read 'Jeffrey I. Lee', written over a light-colored background.

Jeffrey I. Lee
Professional Surveyor 6359
August 22, 2006

L-1656076-2



Rec'd 8-25-06 SUM OK

Lee Surveying and Mapping Co., Inc.

Land Surveys • Topography • Subdivisions • Construction Layout

117 N. Madriver St.
Bellefontaine OH 43311



Phone: (937) 593-7335
Fax: (937) 593-7444

1975 - 2005 - 30 YEARS OF EXCELLENCE STOLLY 5.350 ACRES

Lying in Virginia Military Survey 6449, Jefferson Township, Logan County, Ohio.

Being all of the of the Michael B. Stolly and Nancy J. Stolly 2.000 acre tract (Tract III), and remainder of the 2.000 acre tract (Tract IV) as deeded in Official Record 642, Page 736, and part of the Michael B. Stolly and Nancy Jill Stolly 13.845 acre tract as deeded in Official Record 746, Page 390 of the Logan County Records of Deeds and being more particularly described as follows:

Commencing at a railroad spike found at the intersection of center-lines of Mount Crest Drive (50 feet wide) and County Highway 55 (60 feet wide).

THENCE, with the west line of Virginia Military Survey 6449 and the center-line of County Highway 55, S 8°-20'-03"W, a distance of 338.52 feet to a MAG nail found.

THENCE, with the west line of Virginia Military Survey 6449 and the center-line of County Highway 55, S 6°-40'-27"W, a distance of 671.83 feet to a railroad spike found.

THENCE, with the west line of Virginia Military Survey 6449 and the center-line of County Highway 55, S 7°-29'-52"W, a distance of 352.20 feet to a MAG nail set at the TRUE POINT OF BEGINNING.

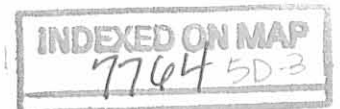
THENCE, S 82°-27'-43"E, a distance of 857.87 feet to a 5/8 inch iron rod set, passing a 5/8 inch iron rod set at 30.00 feet.

THENCE, with the west line of the Kelli S. Zimmerly 44.894 acre tract (O.R. 674, Pg. 82), S 5°-24'-44"W, a distance of 300.66 feet to a 5/8 inch iron rod found.

THENCE, with the north line of the Michael A. Thompson 10.008 acre tract (O.R. 837, Pg. 622) the following two courses:

N 77°-58"-15"W, a distance of 580.41 feet to a 5/8 inch iron rod set.

N 82°-25'-42"W, a distance of 290.21 feet to a MAG nail set, passing a 5/8 inch iron rod set at 260.21 feet.



Lee Surveying and Mapping Co., Inc.

Land Surveys • Topography • Subdivisions • Construction Layout

117 N. Madriver St.
Bellefontaine OH 43311



Phone: (937) 593-7335
Fax: (937) 593-7444

1975 - 2005 - 30 YEARS OF EXCELLENCE

THENCE, with the west line of Virginia Military Survey 6449 and the center-line of County Highway 55, N 7°-29'-52"E, a distance of 254.83 feet to the point of beginning.

Containing 5.350 acres of which 0.176 acre is within the highway right-of-way.

The basis for bearings is the west line of Virginia Military Survey 6449 and the center-line of County Highway 55 being N 7°-29'-52"E, and all other bearings are from angles and distances measured in a field survey by Lee Surveying and Mapping Co., Inc. on March 3, 2004 and August 22, 2006.



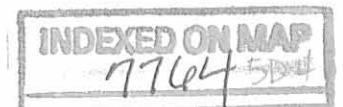
ORIGINAL STAMP IN GREEN

Description prepared by:

A handwritten signature in black ink, appearing to read 'Jeffrey I. Lee', written over the typed name and date.

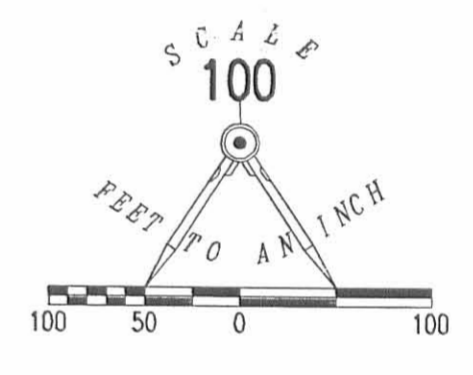
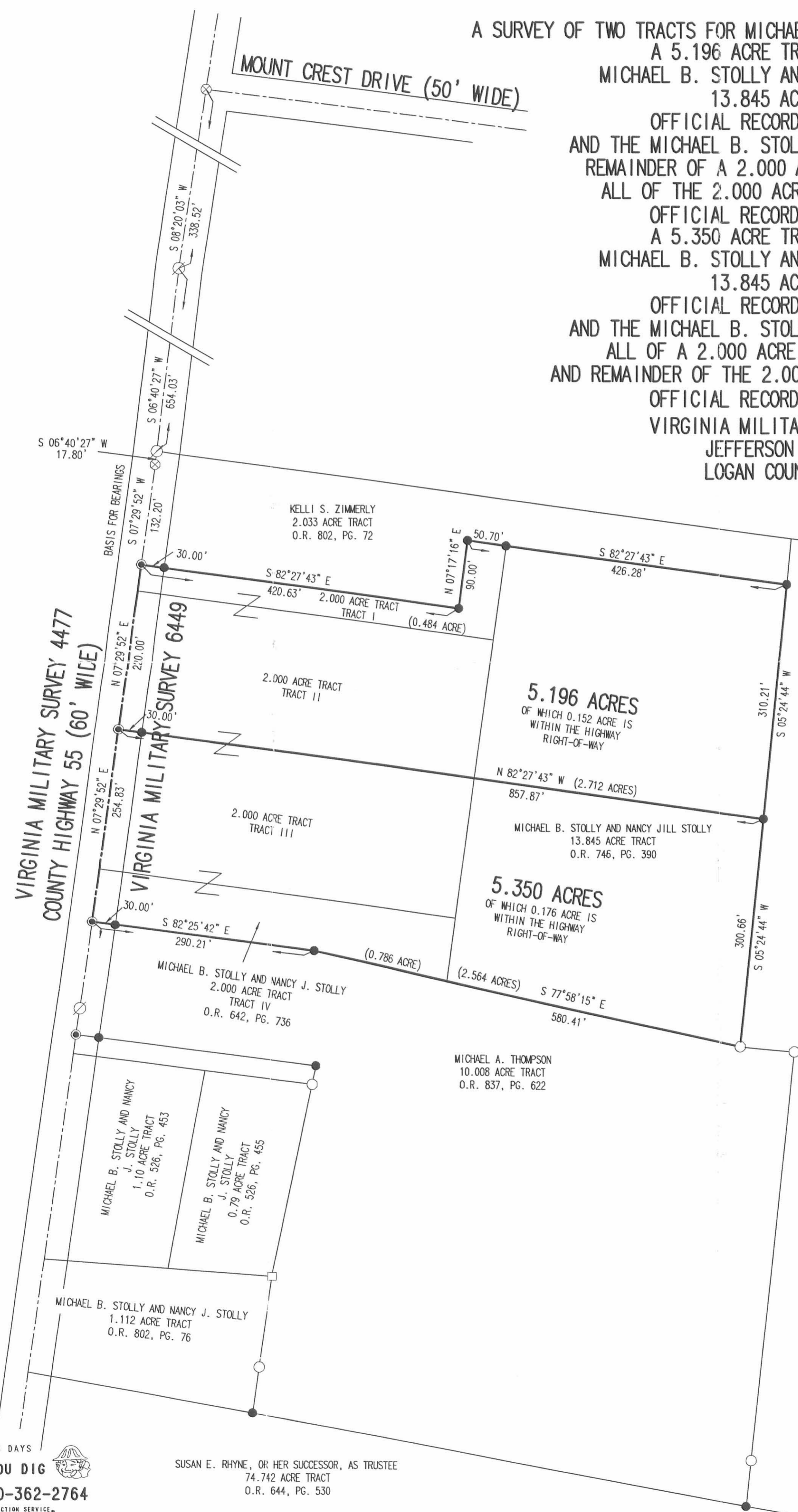
Jeffrey I. Lee
Professional Surveyor 6359
August 22, 2006

L-1656076-2



REV'D 8-24-06 SWM OK

A SURVEY OF TWO TRACTS FOR MICHAEL B. STOLLY AND NANCY J. STOLLY
 A 5.196 ACRE TRACT OUT OF THE
 MICHAEL B. STOLLY AND NANCY JILL STOLLY
 13.845 ACRE TRACT
 OFFICIAL RECORD 746, PAGE 390
 AND THE MICHAEL B. STOLLY AND NANCY J. STOLLY
 REMAINDER OF A 2.000 ACRE TRACT (TRACT I),
 ALL OF THE 2.000 ACRE TRACT (TRACT II),
 OFFICIAL RECORD 642, PAGE 736
 A 5.350 ACRE TRACT OUT OF THE
 MICHAEL B. STOLLY AND NANCY JILL STOLLY
 13.845 ACRE TRACT
 OFFICIAL RECORD 746, PAGE 390
 AND THE MICHAEL B. STOLLY AND NANCY J. STOLLY
 ALL OF A 2.000 ACRE TRACT (TRACT III),
 AND REMAINDER OF THE 2.000 ACRE TRACT (TRACT IV),
 OFFICIAL RECORD 642, PAGE 736
 VIRGINIA MILITARY SURVEY 6449
 JEFFERSON TOWNSHIP
 LOGAN COUNTY, OHIO



- LEGEND
- 5/8 INCH IRON ROD SET
 - 5/8 INCH IRON ROD FOUND
 - ⊙ MAG NAIL SET
 - ⊗ MAG NAIL FOUND
 - ⊗ RAILROAD SPIKE FOUND
 - 6 INCH WOOD CORNER POST FOUND

KELLI S. ZIMMERLY
 44.894 ACRE TRACT
 O.R. 674, PG. 82



SURVEYED BY:
 JEFFREY I. LEE
 PROFESSIONAL SURVEYOR 6359
 JULY 12, 2006
 REVISED AUGUST 22, 2006

ORIGINAL STAMP IN GREEN
 COPYRIGHT 2005 BY:
 LEE SURVEYING & MAPPING CO., INC.
 117 North Madriver Street
 BELLEFONTAINE, OHIO 43311
 (937) 593-7335

2 WORKING DAYS
BEFORE YOU DIG
 CALL TOLL FREE 800-362-2764
 OHIO UTILITIES PROTECTION SERVICE

SUSAN E. RHYNE, OR HER SUCCESSOR, AS TRUSTEE
 74.742 ACRE TRACT
 O.R. 644, PG. 530

ADW D0706 1656086 L-1656086-2

INDEXED ON MAP
 7704 5P