

REC'D 7-17-06 SMY OK

Lee Surveying and Mapping Co., Inc.

Land Surveys • Topography • Subdivisions • Construction Layout

117 N. Madriver St.
Bellefontaine OH 43311



Phone: (937) 593-7335
Fax: (937) 593-7444

1975 - 2005 - 30 YEARS OF EXCELLENCE STOLLY 10.546 ACRE

Lying in Virginia Military Survey 6449, Jefferson Township, Logan County, Ohio.

Being all of the remainder of the Michael B. Stolly and Nancy J. Stolly 2.000 acre tract (Tract I), and all of the 2.000 acre tracts (Tracts II and III) and part of the 2.000 acre tract (Tract IV) as deeded in Official Record 642, Page 736, and part of the Michael B. Stolly and Nancy Jill Stolly 13.845 acre tract as deeded in Official Record 746, Page 390 of the Logan County Records of Deeds and being more particularly described as follows:

Commencing at a railroad spike found at the intersection of center-lines of Mount Crest Drive (50 feet wide) and County Highway 55 (60 feet wide).

THENCE, with the west line of Virginia Military Survey 6449 and the center-line of County Highway 55, S 8°-20'-03"W, a distance of 338.52 feet to a MAG nail found.

THENCE, with the west line of Virginia Military Survey 6449 and the center-line of County Highway 55, S 6°-40'-27"W, a distance of 671.83 feet to a railroad spike found.

THENCE, with the west line of Virginia Military Survey 6449 and the center-line of County Highway 55, S 7°-29'-52"W, a distance of 132.20 feet to a MAG nail set at the TRUE POINT OF BEGINNING.

THENCE, with the lines of the Kelli S. Zimmerly 2.033 acre tract (O.R. 802, Pg. 72) the following three courses:

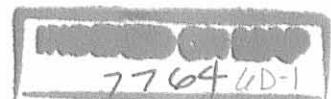
S 82°-27'-43"E, a distance of 420.63 feet to a 5/8 inch iron rod set, passing a 5/8 inch iron rod set at 30.00 feet.

N 7°-17'-16"E, a distance of 90.00 feet to a 5/8 inch iron rod set.

S 82°-27'-43"E, a distance of 426.28 feet to a 5/8 inch iron rod set, passing a 5/8 inch iron rod set at 50.70 feet.

THENCE, with the west line of the Kelli S. Zimmerly 44.894 acre tract (O.R. 674, Pg. 82), S 5°-24'-44"W, a distance of 610.87 feet to a 5/8 inch iron rod found.

THENCE, N 77°-58'-15"W, a distance of 580.41 feet to a 5/8 inch iron rod set.



Lee Surveying and Mapping Co., Inc.

Land Surveys • Topography • Subdivisions • Construction Layout

117 N. Madriver St.
Bellefontaine OH 43311



Phone: (937) 593-7335
Fax: (937) 593-7444

1975 - 2005 - 30 YEARS OF EXCELLENCE

THENCE, N 82°-25'-42"W, a distance of 290.21 feet to a MAG nail set, passing a 5/8 inch iron rod set at 260.21 feet.

THENCE, with the west line of Virginia Military Survey 6449 and the center-line of County Highway 55, N 7°-29'-52"E, a distance of 474.83 feet to the point of beginning.

Containing 10.546 acres of which 0.327 acre is within the highway right-of-way.

The basis for bearings is the west line of Virginia Military Survey 6449 and the center-line of County Highway 55 being N 7°-29'-52"E, and all other bearings are from angles and distances measured in a field survey by Lee Surveying and Mapping Co., Inc. on March 3, 2004 and July 12, 2006.



ORIGINAL STAMP IN GREEN

Description prepared by:

A handwritten signature in black ink, appearing to read 'Jeffrey I. Lee'.

Jeffrey I. Lee
Professional Surveyor 6359
July 12, 2006

L-1656076-2



Lee Surveying and Mapping Co., Inc.

Land Surveys • Topography • Subdivisions • Construction Layout

117 N. Madriver St.
Bellefontaine OH 43311



Phone: (937) 593-7335
Fax: (937) 593-7444

1975 - 2005 - 30 YEARS OF EXCELLENCE STOLLY 10.008 ACRES

Lying in Virginia Military Survey 6449, Jefferson Township, Logan County, Ohio.

Being part of the Michael B. Stolly and Nancy J. Stolly 2.000 acre tract as deeded in Official Record 642, Page 736 Tract I, part of the Michael B. Stolly and Nancy Jill Stolly 13.845 acre tract as deeded in Official Record 746, Page 390 and all of the Michael B. Stolly and Nancy J. Stolly 0.921 acre tract as deeded in Official Record 802, Page 76 of the Logan County Records of Deeds and being more particularly described as follows:

Commencing at a railroad spike found at the intersection of center-lines of Mount Crest Drive (50 feet wide) and County Highway 55 (60 feet wide).

THENCE, with the west line of Virginia Military Survey 6449 and the center-line of County Highway 55, S 8°-20'-03"W, a distance of 338.52 feet to a MAG nail found.

THENCE, with the west line of Virginia Military Survey 6449 and the center-line of County Highway 55, S 6°-40'-27"W, a distance of 671.83 feet to a railroad spike found.

THENCE, with the west line of Virginia Military Survey 6449 and the center-line of County Highway 55, S 7°-29'-52"W, a distance of 607.03 feet to a MAG nail set at the TRUE POINT OF BEGINNING.

THENCE, S 82°-25'-42"E, a distance of 290.21 feet to a 5/8 inch iron rod set, passing a 5/8 inch iron rod set at 30.00 feet.

THENCE, S 77°-58'-15"E, a distance of 580.41 feet to a 5/8 inch iron rod found.

THENCE, with the lines of the Kelli S. Zimmerly 44.894 acre tract (O.R. 674, Pg. 82), the following two courses:

S 84°-35'-16"E, a distance of 71.98 feet to a 5/8 inch iron rod found.

S 5°-24'-44"W, distance of 598.61 feet to a 5/8 inch iron rod set, passing a 5/8 inch iron rod found at 538.41 feet.

THENCE, with the north line of the Susan E. Rhyne, or her successor, as Trustee 74.742 acre tract (O.R. 644, Pg. 530), N 79°-52'-39"W, a distance of 669.82 feet to a 5/8 inch iron rod set.

INDEXED ON MAP
77646D-3

Lee Surveying and Mapping Co., Inc.

Land Surveys • Topography • Subdivisions • Construction Layout

117 N. Madriver St.
Bellefontaine OH 43311



Phone: (937) 593-7335
Fax: (937) 593-7444

1975 - 2005 - 30 YEARS OF EXCELLENCE

THENCE, with the east line of the Michael B. Stolly and Nancy J. Stolly 1.112 acre tract (O.R. 802, Pg. 76), N 7°-29'-52"E, a distance of 180.26 feet to a 6 inch wood corner post found, passing a 5/8 inch iron rod found at 60.06 feet.

THENCE, with the east line of the Michael B. Stolly and Nancy J. Stolly 0.79 acre tract (O.R. 526, Pg. 455), and said line extended, N 11°-32'-45"E, a distance of 283.07 feet to a 5/8 inch iron rod set, passing a 5/8 inch iron rod found at 258.00 feet.

THENCE, N 82°-48'-15"W, a distance of 313.40 feet to a MAG nail set, passing a 5/8 inch iron rod set at 283.40 feet.

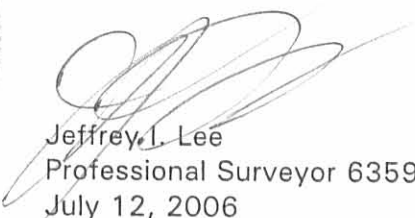
THENCE, with the west line of Virginia Military Survey 6449 and the center-line of County Highway 55, N 7°-29'-52"E, a distance of 150.17 feet to the point of beginning, passing a MAG nail found at 35.00 feet.

Containing 10.008 acres of which 0.103 acre is within the highway right-of-way.

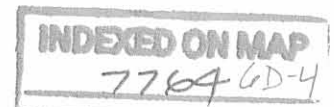
The basis for bearings is the west line of Virginia Military Survey 6449 and the center-line of County Highway 55 being N 7°-29'-52"E, and all other bearings are from angles and distances measured in a field survey by Lee Surveying and Mapping Co., Inc. on March 3, 2004 and July 12, 2006.



Description prepared by:

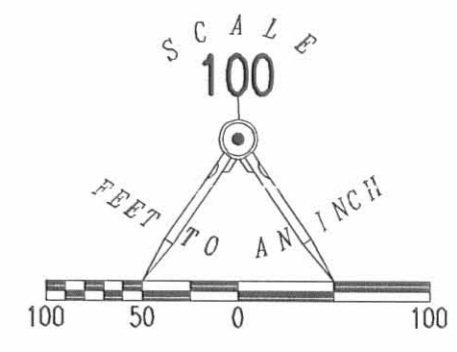
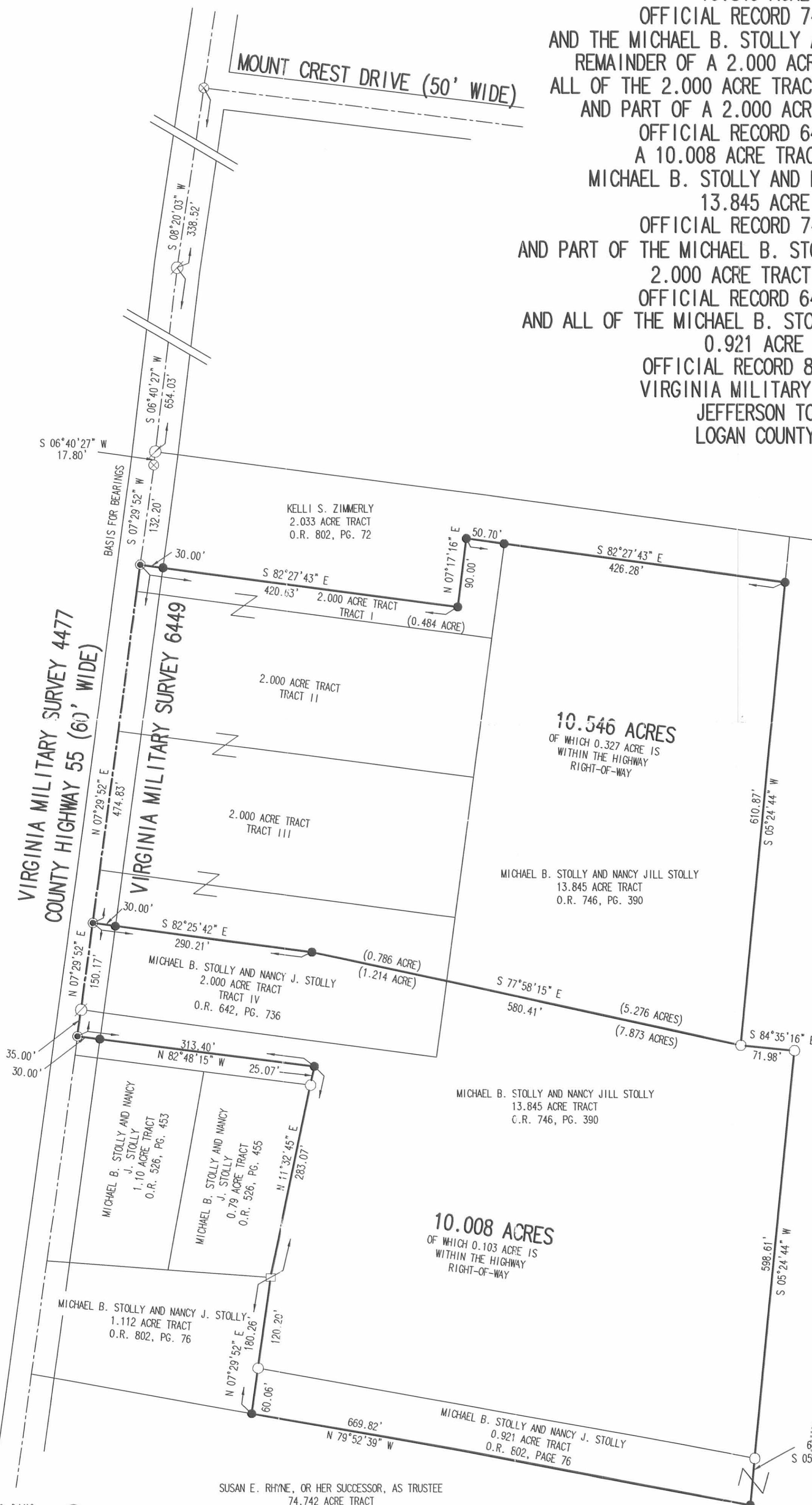

Jeffrey I. Lee
Professional Surveyor 6359
July 12, 2006

L-1656076-2

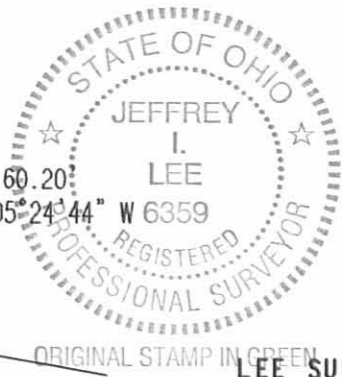


REV 7-24-06

A SURVEY OF TWO TRACTS FOR MICHAEL B. STOLLY AND NANCY J. STOLLY
 A 10.546 ACRE TRACT OUT OF THE
 MICHAEL B. STOLLY AND NANCY JILL STOLLY
 13.845 ACRE TRACT
 OFFICIAL RECORD 746, PAGE 390
 AND THE MICHAEL B. STOLLY AND NANCY JILL STOLLY
 REMAINDER OF A 2.000 ACRE TRACT (TRACT I),
 ALL OF THE 2.000 ACRE TRACTS (TRACT II AND III),
 AND PART OF A 2.000 ACRE TRACT (TRACT IV)
 OFFICIAL RECORD 642, PAGE 736
 A 10.008 ACRE TRACT OUT OF THE
 MICHAEL B. STOLLY AND NANCY JILL STOLLY
 13.845 ACRE TRACT
 OFFICIAL RECORD 746, PAGE 390
 AND PART OF THE MICHAEL B. STOLLY AND NANCY J. STOLLY
 2.000 ACRE TRACT (TRACT IV)
 OFFICIAL RECORD 642, PAGE 736
 AND ALL OF THE MICHAEL B. STOLLY AND NANCY J. STOLLY
 0.921 ACRE TRACT
 OFFICIAL RECORD 802, PAGE 76
 VIRGINIA MILITARY SURVEY 6449
 JEFFERSON TOWNSHIP
 LOGAN COUNTY, OHIO



- LEGEND
- 5/8 INCH IRON ROD SET
 - 5/8 INCH IRON ROD FOUND
 - ⊙ MAG NAIL SET
 - ⊗ MAG NAIL FOUND
 - ⊗ RAILROAD SPIKE FOUND
 - 6 INCH WOOD CORNER POST FOUND



SURVEYED BY:
 JEFFREY I. LEE
 PROFESSIONAL SURVEYOR 6359
 JULY 12, 2006
 REVISED JULY 24, 2006

COPYRIGHT 2005 BY:
 LEE SURVEYING & MAPPING CO., INC.
 117 North Madriver Street
 BELLEFONTAINE, OHIO 43311
 (937) 593-7335

2 WORKING DAYS
BEFORE YOU DIG
 CALL TOLL FREE 800-362-2764
 OHIO UTILITIES PROTECTION SERVICE

INDEXED ON MAP
 7764 LP

SUSAN E. RHYNE, OR HER SUCCESSOR, AS TRUSTEE
 74.742 ACRE TRACT
 O.R. 644, PG. 530

1 REC'D 9-7-05 SJM OK

Lee Surveying and Mapping Co., Inc.

Land Surveys • Topography • Subdivisions • Construction Layout

117 N. Madriver St.
Bellefontaine OH 43311



Phone: (937) 593-7335
Fax: (937) 593-7444

1975 - 2005 - 30 YEARS OF EXCELLENCE STOLLY

30 FEET WIDE INGRESS/ EGRESS EASEMENT

Lying in Virginia Military Survey 6449, Jefferson Township, Logan County, Ohio.

Being an ingress/ egress easement over and through the Michael B. Stolly and Nancy Jill Stolly 2.000 acre tract Official Record 642, Page 736 Tract I and part of the Michael B. Stolly and Nancy Jill Stolly 13.845 acre tract Official Record 746, Page 390 of the Logan County Records of Deeds and being more particularly described as follows:

Beginning at a railroad spike found at the intersection of center-lines of Mount Crest Drive (50 feet wide) and County Highway 55 (60 feet wide).

THENCE, with the west line of Virginia Military Survey 6449 and the center line of County Highway 55 the following 4 courses:

S 8°-20'-03"W, a distance of 338.52 feet to a MAG nail found.

S 6°-40'-27"W, a distance of 654.03 feet to a MAG nail found.

S 6°-40'-27"W, a distance of 17.80 feet to a railroad spike found.

S 7°-29'-52"W, a distance of 126.77 feet to a point at THE TRUE POINT OF BEGINNING.

THENCE, with the center-line of aforesaid 30 feet wide easement the following 7 courses:

N 81°-26'-56"E, a distance of 66.87 feet to a point.

N 69°-50'-09"E, a distance of 59.07 feet to a point.

A curve to the right having a central angle of 15°-11'-56", a radius of 340.39 feet, an arc length of 90.30 feet, having a chord bearing N 78°-01'-48"E, a distance of 90.03 feet to a point.

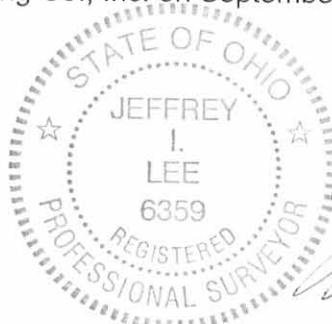
N 89°-15'-08"E, a distance of 228.35 feet to a point.

A curve to the right having a central angle of 12°-47'-37", a radius of 411.90, feet, an arc length of 91.97 feet, having a chord bearing S 85°-52'-28"E, a distance of 91.78 feet to a point.

S 80°-15'-36"E, a distance of 128.38 feet to a point.

S 2°-41'-22"W, a distance of 25.01 feet to a point at the terminus of the easement referenced by a 5/8 inch iron rod set S 82°-27'-43"E, a distance of 197.11 feet

The basis for bearings is the center-line of County Highway 55 being N 7°-29'-52"E, and all other bearings are from angles and distances measured in a field survey by Lee Surveying and Mapping Co., Inc. on September 1, 2005.



Description prepared by:

Jeffrey I. Lee
Professional Surveyor 6359
September 2, 2005

L-1656085 A

ORIGINAL STAMP IN GREEN

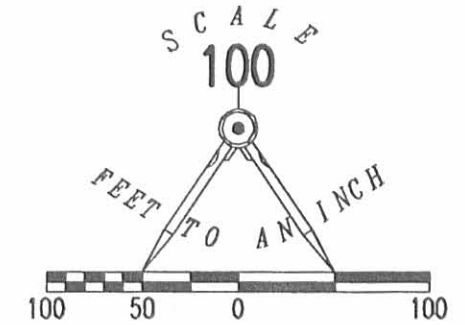
MEMBER: AMERICAN CONGRESS ON SURVEYING & MAPPING (ACSM) • NATIONAL SOCIETY OF PROFESSIONAL SURVEYORS (NSPS)
PROFESSIONAL LAND SURVEYORS OF OHIO (PLSO) • SURVEYORS HISTORICAL SOCIETY

INDEXED ON MAP
77647D

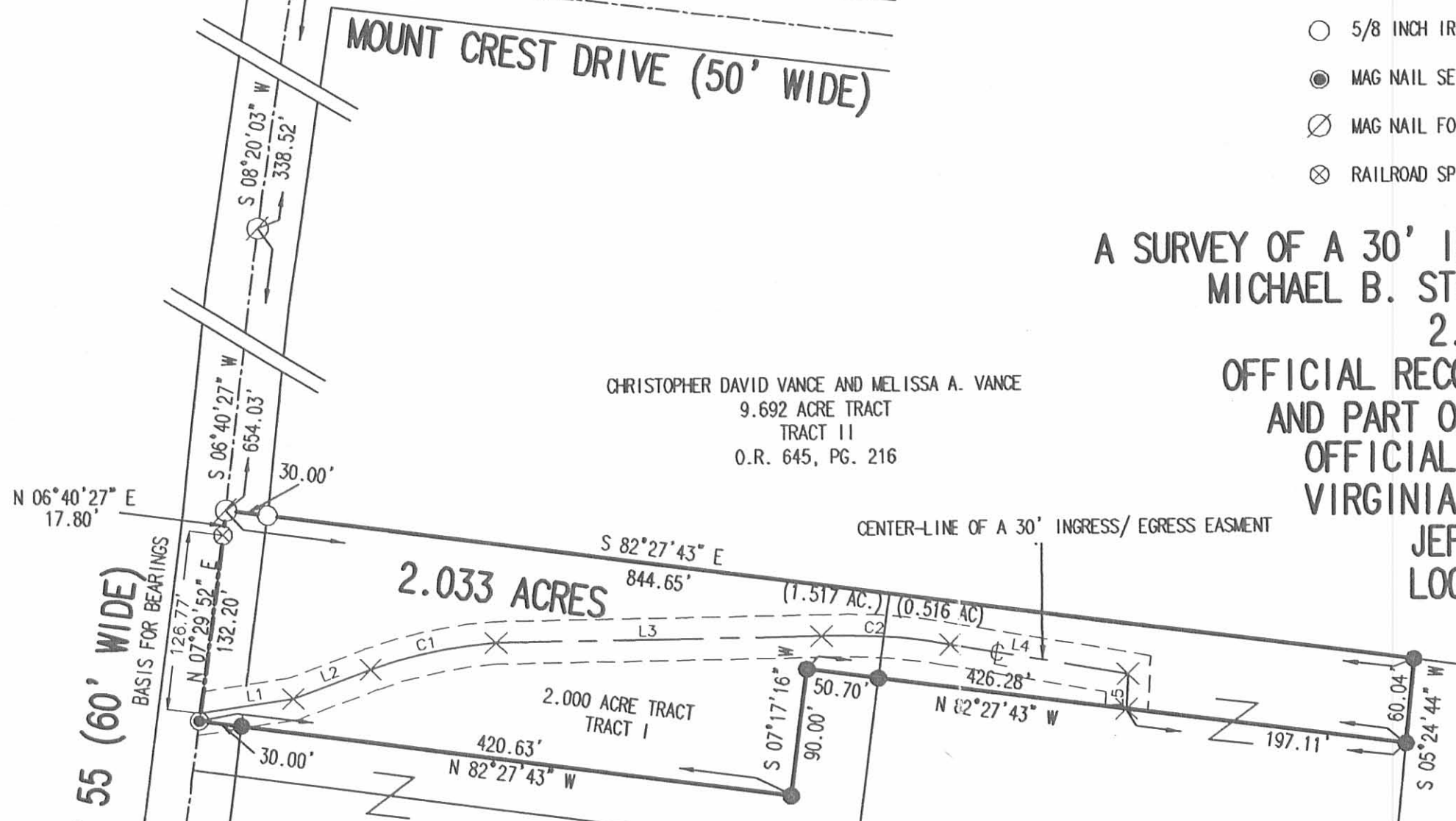
REC'D 9-7-05 SMYOK

LEGEND

- 5/8 INCH IRON ROD SET
- 5/8 INCH IRON ROD FOUND
- ⊙ MAG NAIL SET
- ⊗ MAG NAIL FOUND
- ⊗ RAILROAD SPIKE FOUND



A SURVEY OF A 30' INGRESS/ EGRESS EASEMENT OVER THE
 MICHAEL B. STOLLY AND NANCY JILL STOLLY
 2.000 ACRE TRACT
 OFFICIAL RECORD 642, PAGE 736, TRACT I
 AND PART OF THE 13.845 ACRE TRACT
 OFFICIAL RECORD 746, PAGE 390
 VIRGINIA MILITARY SURVEY 6449
 JEFFERSON TOWNSHIP
 LOGAN COUNTY, OHIO



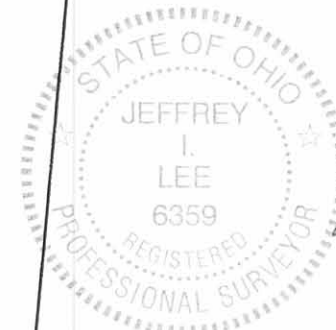
CHRISTOPHER DAVID VANCE AND MELISSA A. VANCE
 9.692 ACRE TRACT
 TRACT II
 O.R. 645, PG. 216

MICHAEL B. STOLLY AND NANCY J. STOLLY
 2.000 ACRE TRACT
 TRACT II
 O.R. 642, PG. 736

MICHAEL B. STOLLY AND NANCY JILL STOLLY
 13.845 ACRE TRACT
 O.R. 746, PG. 390

KELLI S. ZIMMERLY
 44.894 ACRE TRACT
 O.R. 674, PG. 82

SURVEYED BY:



[Signature]
 JEFFREY I. LEE
 PROFESSIONAL SURVEYOR 6359
 SEPTEMBER 1, 2005

COPYRIGHT 2005 BY:
 LEE SURVEYING & MAPPING CO., INC.
 117 North Madriver Street
 BELLEFONTAINE, OHIO 43311
 (937) 593-7335

ADW D0805 1656085 A L-1656085-3

LINE	BEARING	DISTANCE
L1	N 81°26'56" E	66.87'
L2	N 69°50'09" E	59.07'
L3	N 89°15'08" E	228.35'
L4	S 80°15'36" E	128.38'
L5	S 02°41'22" W	25.01'

CURVE	DELTA ANGLE	RADIUS	ARC LENGTH	CHORD BEARING	CHORD LENGTH
C1	15°11'56"	340.39'	90.30'	N 78°01'48" E	90.03'
C2	12°47'37"	411.90'	91.97'	S 85°52'28" E	91.78'

COUNTY HIGHWAY 55 (60' WIDE)
 BASIS FOR BEARINGS
 V.M.S. 4477
 V.M.S. 6449

2 WORKING DAYS

BEFORE YOU DIG

CALL TOLL FREE 800-362-2764

OHIO UTILITIES PROTECTION SERVICE.

INDEXED ON MAP
 7764 7P

REV'D 8-14-03 SMY/OK

Lee Surveying and Mapping Co., Inc.

Land Surveys • Topography • Subdivisions • Construction Layout

117 N. Madriver St.
Bellefontaine OH 43311



Phone: (937) 593-7335
Fax: (937) 593-7444

STEVENSON 44.894 ACRES

Lying in Virginia Military Survey 6449, Jefferson Township, Logan County, Ohio.

Being out of the Herbert J. Stevenson and Becky L. Stevenson original 58.739 acre tract, as deeded and described in Official Record 646, Page 854 of the Logan County Records of Deeds and being more particularly described as follows:

Beginning at a railroad spike found on the west line of Virginia Military Survey 6449 at the intersection of the center-lines of Mount Crest Drive and County Highway 55.

THENCE, with the west line of Virginia Military Survey 6449 and center-line of County Highway 55 (60 feet wide), the following 3 (three) courses:

S 8°-20'-03"W, a distance of 338.52 feet to a railroad spike found.

S 6°-40'-27"W, a distance of 671.84 feet to a railroad spike found.

S 7°-29'-52"W, a distance of 1054.73 feet to a railroad spike found at the TRUE POINT OF BEGINNING.

THENCE, with the south lines of the Michael D. Stolly 1.10 acre tract (O.R. 526, Pg. 453) and 0.79 acre tract (O.R. 526, Pg. 455), S 85°-46'-55"E, a distance of 293.90 feet to a 6 inch wood corner post found, passing a 5/8 inch iron rod found at 30.00 feet.

THENCE, S 7°-29'-52" W, a distance of 120.20 feet to a 5/8 inch iron rod set.

THENCE, S 79°-52'-39" E, a distance of 667.62 feet to a 5/8 inch iron rod set.

THENCE, N 5°-24'-44" E, a distance of 538.40 feet to a 5/8 inch iron rod set.

THENCE, N 84°-35'-16" W, a distance of 71.98 feet to a 5/8 inch iron rod set.

THENCE, N 5°-24'-44" E, a distance of 670.88 feet to a 5/8 inch iron rod set.

THENCE, with the south line of the Christopher David Vance 9.692 acre tract (O.R. 645, Pg. 216, Tract II), S 82°-27'-43"E, a distance of 437.98 feet to a 5/8 inch iron rod found.

THENCE, with the south line of the Jeffrey W. Blaker 12.243 acre tract (O.R. 647, Pg. 97), S 79°-35'-42"E, a distance of 887.83 feet to a 1/2 inch iron rod found.

Lee Surveying and Mapping Co., Inc.

Land Surveys • Topography • Subdivisions • Construction Layout

117 N. Madriver St.
Bellefontaine OH 43311



Phone: (937) 593-7335
Fax: (937) 593-7444

THENCE, with the south line of the Richard A. Petty 31.167 acre tract (O.R. 63, Pg. 124), S 82°-04'-00"E, a distance of 241.05 feet to a 1/2 inch iron rod found.

THENCE, with the Claren P. Brown 16.935 acre tract (O.R. 74, Pg. 362), the following 3 (three) courses:

S 8°-02'-51"W, a distance of 889.34 feet to a 5/8 inch iron rod found.

N 83°-23'-49"W, a distance of 132.10 feet to a 5/8 inch iron rod found.

S 8°-05'-11"W, a distance of 387.27 feet to a 1/2 inch iron rod found.

THENCE, with the north line of the Susan E. Rhyne, Trustee 74.742 acre tract (O.R. 644, Pg. 530), N 79°-52'-39"W, a distance of 2267.89 feet to a MAG nail found, passing a 5/8 inch iron rod found at 2237.86 feet.

THENCE, with the west line of Virginia Military Survey 6449 and the center-line of County Highway 55, N 7°-29'-52"E, a distance of 150.00 feet to the point of beginning.

Containing 44.894 acres of which 0.104 acre is within the highway right-of-way.

The basis for bearings is the center-line of County Highway 55, being N 7°-29'-52"E, and all other bearings are from angles and distances measured in a field survey by Lee Surveying and Mapping Co., Inc. on July 24, 2003.



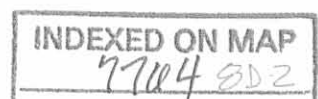
ORIGINAL STAMP IN GREEN

Description prepared by:

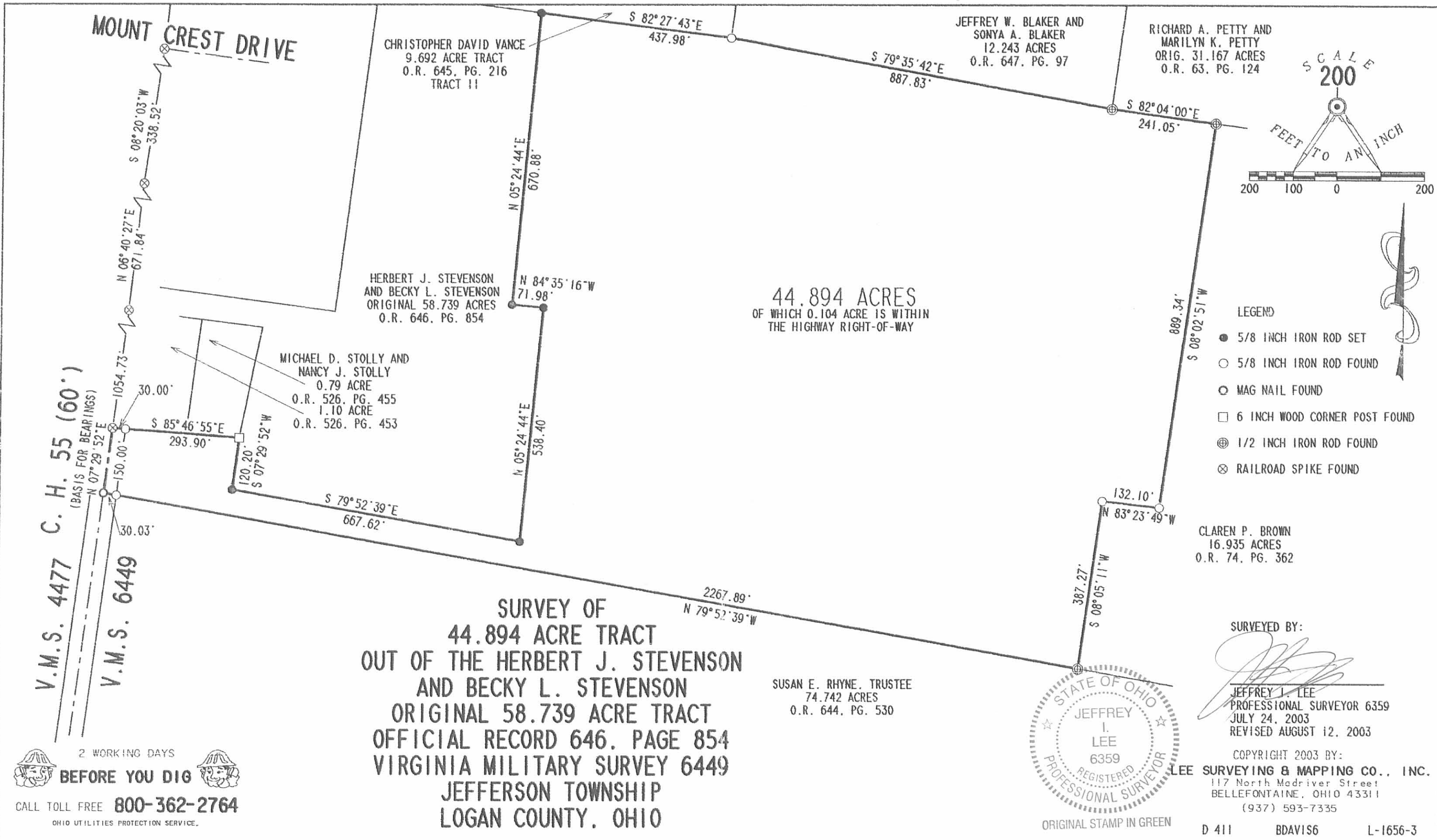
A handwritten signature in black ink, appearing to read 'Jeffrey I. Lee', written over a faint background.

Jeffrey I. Lee
Professional Surveyor 6359
July 28, 2003

L-1656



REC'D 8-14-03 SMY/OK



INDEXED ON MAP
7764 SD

D 411 BDAVIS6 L-1656-3

Received 5-20-89

O.R. (C.R.)

Lee Surveying and Mapping Co.



Farm Surveys • Lot Surveys • Topography • Subdivisions • Construction Layout

855 EAST SANDUSKY AVENUE
BELLEFONTAINE, OHIO 43311

(513) 593-5780

CLAYTON M. LEE, P.S.
JEFFREY I. LEE, P.S.

PETTY SURVEY (1.235 ACRES)

Lying in V.M.S. 6449, Jefferson Township, Logan County, Ohio.

Being out of that original 31.167 acre tract in the name of Richard Petty as deeded and described in O.R. 63, Page 124 of the Logan County Records of Deeds and being more particularly described as follows:

Beginning at a railroad spike found on the center-line of Township Road 182, a distance of 81.33 feet, northwesterly, with said center-line, from the east line of V.M.S. 6449, and marking the northwest corner of the Claren Brown 16.935 acre tract (O.R. 74, Page 362).

THENCE, with the west line of said 16.935 acre tract, S 7°-57'-06" W, a distance of 526.80 feet to a 5/8" iron rod (set).

THENCE, N 82°-02'-54" W, a distance of 200.00 feet to a 5/8" iron rod (set).

THENCE, N 7°-57'-06" E, a distance of 200.00 feet to a 5/8" iron rod (set).

THENCE, S 82°-02'-54" E, a distance of 160.00 feet to a 5/8" iron rod (set).

THENCE, parallel to and 40 feet westerly from the east property line, N 7°-57'-06" E, a distance of 363.40 feet to a railroad spike set on the center-line of Township Road 182.

THENCE, with said center-line, S 39°-35'-10" E, a distance of 54.22 feet to the point of beginning.

Containing 1.235 acres.

This description prepared from an actual field survey.

Basis for bearings: Center-line of Township Road 182 = S 39°-35'-10" E.

Prepared by:

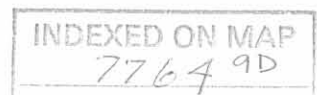
Clayton M. Lee

Clayton M. Lee
Registered Professional Surveyor No. 6181
May 10, 1989



ORIGINAL STAMP IN GREEN

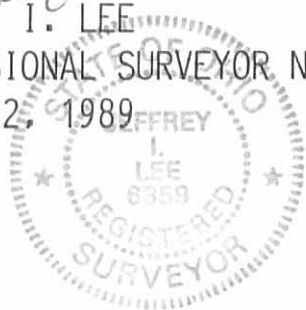
L-1656



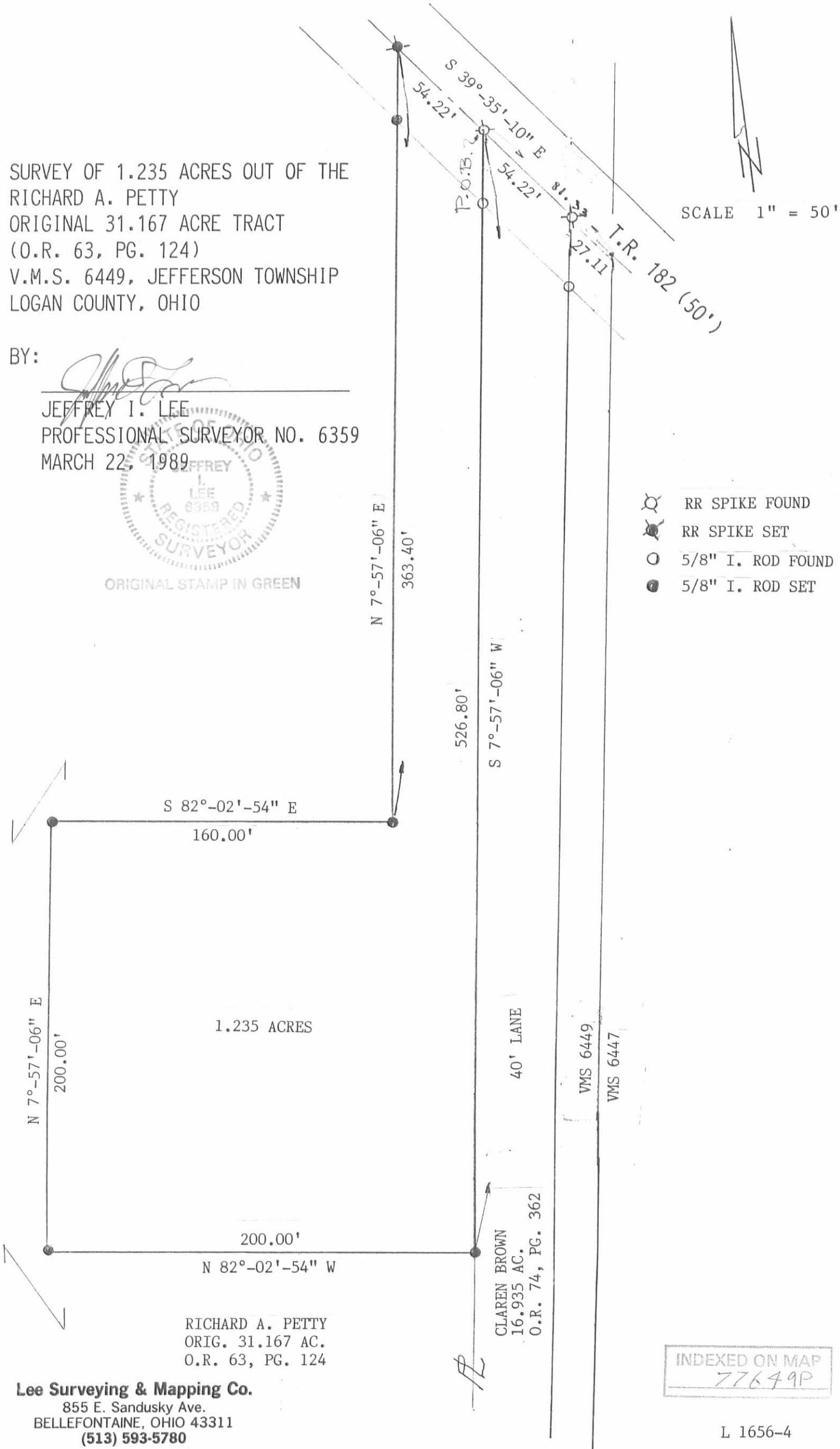
SURVEY OF 1.235 ACRES OUT OF THE
 RICHARD A. PETTY
 ORIGINAL 31.167 ACRE TRACT
 (O.R. 63, PG. 124)
 V.M.S. 6449, JEFFERSON TOWNSHIP
 LOGAN COUNTY, OHIO

BY:

Jeffrey I. Lee
 JEFFREY I. LEE
 PROFESSIONAL SURVEYOR NO. 6359
 MARCH 22, 1989



ORIGINAL STAMP IN GREEN



- ⊙ RR SPIKE FOUND
- ⊗ RR SPIKE SET
- 5/8" I. ROD FOUND
- 5/8" I. ROD SET

RICHARD A. PETTY
 ORIG. 31.167 AC.
 O.R. 63, PG. 124

Lee Surveying & Mapping Co.
 855 E. Sandusky Ave.
 BELLEFONTAINE, OHIO 43311
 (513) 593-5780

INDEXED ON MAP
 77649P