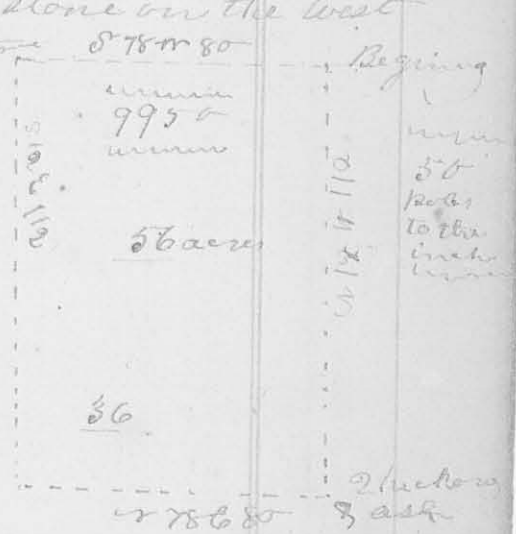


10th mo Oct, 12th 1824

✓ Survey 36

8181

Surveyed 56 acres of land for Samuel Garrison, beginning at a small blue ash, and then bush in the south line of Rich-
ard Rutledges land in Michael Bowyers survey on the old
Miami River cr 9950, thence S 78° W with Rutledges line
passing some cherry tree ~~and~~ pines at 119 poles the South
west corner to Rutledges land, 80 to a stone on the west
side of a drain thence S 12° E 112 poles to
to a stake; thence cr 78° E 80 poles to
2 Hickories and ash in the west line
of Scotts land; thence with said
line cr 12° W 112 poles to the beginning
containing fifty six acres part of
Michael Bowyers survey cr 9950



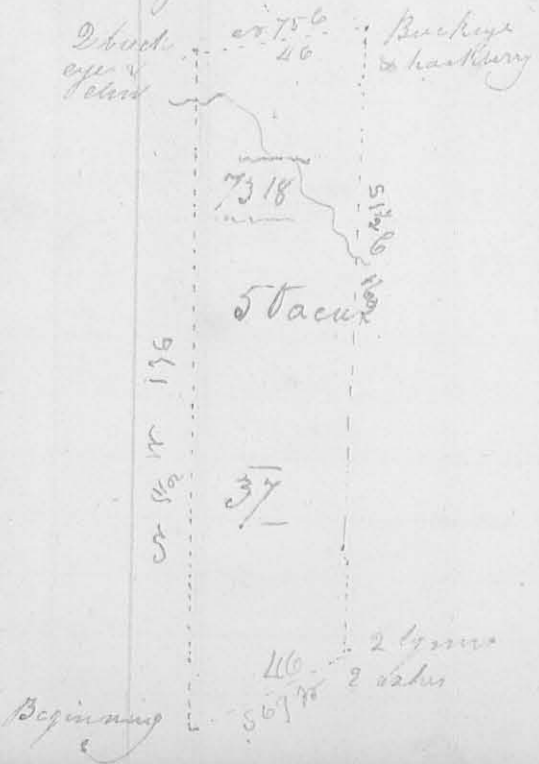
J. M. Garrison
Surveyor S. G.

12th mo 11th 1824

✓ Survey 37

8182

Surveyed 50 acres of land for Samuel Garrison, beginning at a white
walnut and Sugar tree S.W. corner to James McVitt's survey cr
4195 & 4604 and S.W. corner to James Galloway's survey cr 7315
thence with the East line of McVitt's said survey cr 1/4 merging
a branch at 160 poles, 176 poles to 2 buckeyes and elm in the south
line of Samuel Davis' survey cr 3216, (the elm is down, I marked
a buckeye thence with Davis' line cr 75° E 1/2 westerly variation) 45 poles



to a stake between a buckeye
and hackberry in said line; thence
S 12° E cropping a branch at 32 poles
160 poles to 2 hysms & 2 ashes in
the north line of Thomas Parkers
survey cr 4497 thence with
said line S 69° W 46 poles to the
beginning containing fifty acres
the westerly end Galloway's said
survey on the waters of head River.

Robert McVitt
Surveyor S. G.