

12<sup>th</sup> Mo. Dec<sup>r</sup> 7<sup>th</sup> 1825

Survey no 45

Surveyed 205 acres of land, for Jose H. Garwood. Beginning at three beeches in Hollinsworth's lower line and N.E. corner to John Gratton's survey no 4606. thence with the easterly line of said survey S 38° E 160 poles to a haw thorn bush, elm, and buckeye - thence S 52° W 205 poles (cropping flat branch at 118 poles, again at 110, & Darby's creek at 200 poles) to a beech and two sugar trees, in Gratton's south line. Thence S 38° W 160 poles to a stake in Hollinsworth's said line - thence with said line N 52° E 205 poles (cropping Darby's creek) to the beginning two hemlock - dried and five acery



part of Gratton's survey no 4606 on Darby's creek - at the same time made a division line through the 205 acres beginning at 3 elms in the southerly line 102 1/2 poles from either corner thence N 38° W 205 poles to 2 beeches in the northerly line making 2 equal lots thereof.

Joshua Painter }  
James Hedges } C.L.  
Jose H. Garwood marker }  
Ja. Williamson S.L.C.

12<sup>th</sup> Mo<sup>th</sup> Dec<sup>r</sup> 12<sup>th</sup> 1825

Survey no 49

Surveyed 222 1/2 acres of land for the heirs of Thomas Wilkinson as hereafter mentioned Beginning at a red oak and white in the west line of Alex<sup>r</sup> Cb. Dandridge's survey no 4477, and S.E. corner to Hezekiah Morton's survey no 4498 on the waters of Mad River and Miami - thence north, with the line of Morton's survey 55 poles (passing white oaks at 26 poles comes to Dandridge's said survey) cropping a branch at 180 poles and again at 210 poles to a white oak, beech and cherry tree (the cherry tree is fallen) N.E. corner to Morton's

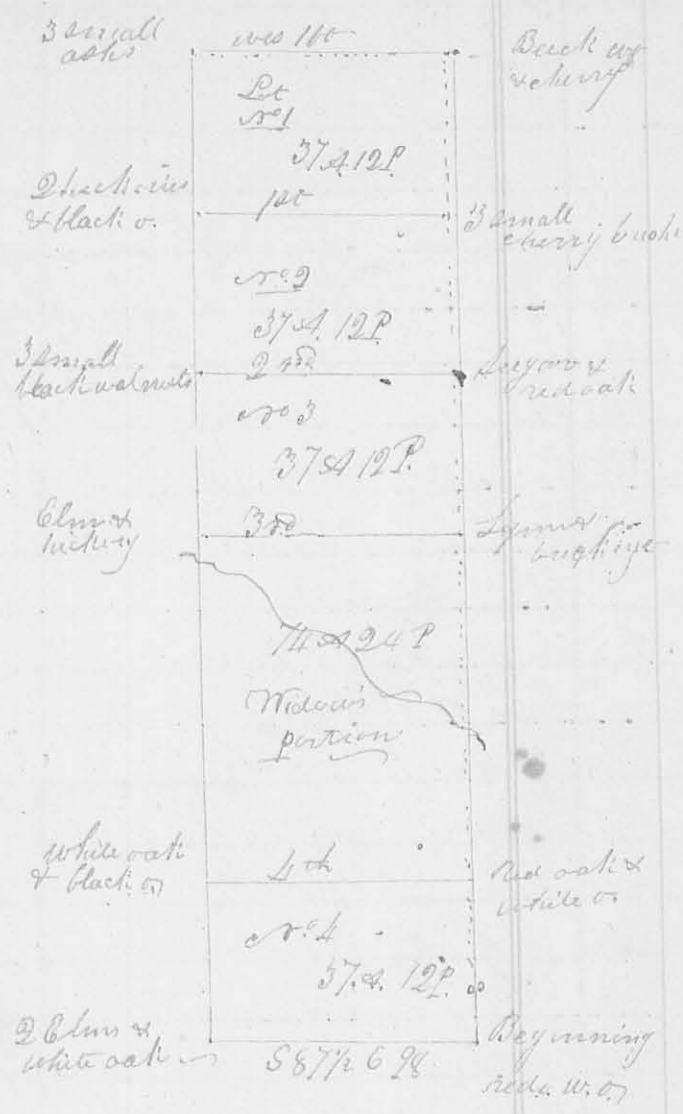
survey - Thence west 100 poles to 3 small black ash in a bog, thence south 356 poles (crossing a branch at 260 poles) to 2 elms and white oak & M. corner to Morton's survey - thence S 87 1/2 E 25 poles to the beginning containing 222 1/2 acres part of Morton's said survey. There is 1/2° westerly variation from the original line.

The 1<sup>st</sup> division line begins at 3 small cherry trees, 2 from one spot, in the east line of this survey 593 poles south from the c.r. & corner - thence west 110 poles to 2 hickories and a black oak -

The 2<sup>nd</sup> begins at 3 small black walnuts in the west line - thence east to a sugar tree and red oak in the east line -

The 3<sup>rd</sup> begins at a lynn, buckeye and stone in the east line - thence west to an elm and hickory in the west line -

The 4<sup>th</sup> at a white oak and black oak in the west line - thence east to a stake, large red oak and small white oak in the east line - each lot containing 37 acres and 12 poles - except the widows portion in which there 74 or 24 poles.



George M. Collock } C. C.  
 Silas Bayly }  
 George Wilkinson marker

Ja. W. Harrison }  
 Surveyor Logan C. C.