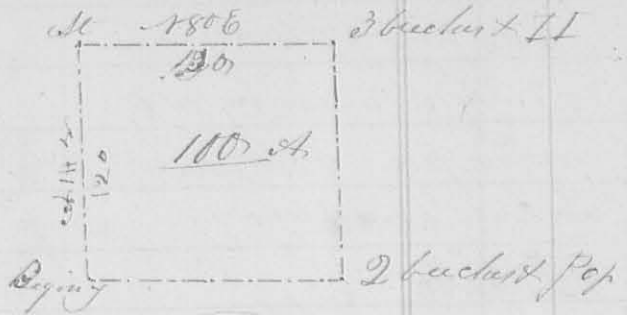


100

poles to Beeches and hickory in Reams south line
 thence 14 1/2 C 120 poles to 2
 beeches and poplar Stephen
 Leas's north line - thence
 150 1/2 W crossing a branch
 130 1/2 poles to the beginning
 containing 100 acres of John
 Scott's said survey
 John Moore }
 Stephen Leas }



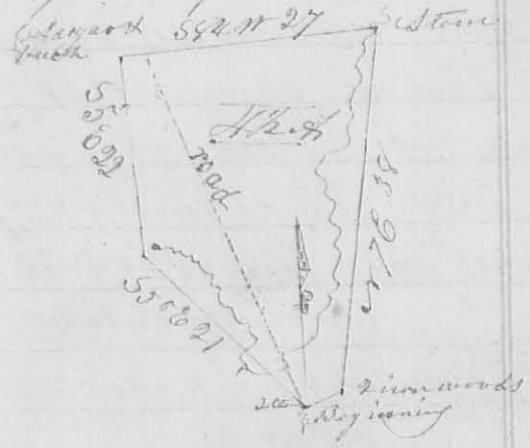
J. M. Harrison
 C. S. L. G.

8222

4th Mo. April, 21st 1829

Survey No 118

Surveyed 1/2 acres of land for the Society of Friends
 Beginning at a stone in the road from Goshen Meeting
 house to the head of Kings-creek, at a sugar tree and poplar
 corner between William Green and John Parson - thence
 26 1/2 C 4 poles to 2 small iron woods in Green's north line
 thence 27 1/2 C 38 poles to a stone in a small branch - thence
 18 1/2 W crossing said road at 24 poles, 27 poles to a beech and
 sugar tree - thence 156
 22 poles to a stone near
 the head of a spring
 thence 150 E crossing
 the spring branch, 21 poles
 to the beginning a part
 of Holland Harp's survey
 82223



John Keiatt }
 Jacob Popson }

J. M. Harrison
 C. S. L. G.

8233

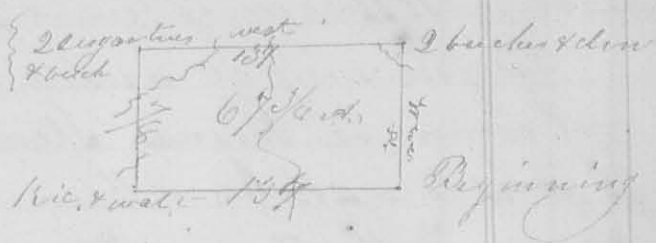
6th Mo. July, 29th 1829

Survey No 119

Surveyed 6 1/2 acres of land for Redwood Easton
 Beginning at a sugar tree, cypress, elm, and walnut stump
 southeast corner of Alexander Dandridge's survey No 220
 thence with the east line of said survey north, cross-
 ing a branch at 74 poles, 78 poles, to 2 beeches, thence
 west, crossing a branch at 8 poles, one at 14, one at 136

poles) 137 poles to 2 sugarties and a beech thence south
(crossing a branch at 40 poles
once at 73 poles) 78 poles

to a buckeye and wal nut
in the south line of the
survey - thence east
with said line, crossing
a branch 139 to the beginning being 67 1/2 acres in the S.E.
corner of Sandridge said survey



Robt Campbell
John Easton

Ja. W. Harrison

10th mo. (Oct. 21st 1829) Survey No. 3234/20

Surveyed 100 acres of land for Kenkin Arles Beginning
at a blue ash, buckeye and fallen white walnut, south
west corner to Thomas Holt's survey No 2674 thence S 25° E
(crossing a branch at 90 poles) 140 poles to a sugartie,
lynn, and beech, on the east bank of a small drain
thence N 65° E (crossing a branch at 6 poles) one at 18 poles)
112 poles, to a sugartie, lynn, beech, and ironwood -

thence N 70° W, crossing a branch
at 83 poles) 105 poles to a small
lynn, dog wood and beech in
the south line of Holt's sur-
vey thence with said line
S 80° W (crossing a branch)
147 poles to the beginning
containing 100 acres part of



D. McArthur & P. Mean's survey No 4948 & 9423

The division line begins at an elm ash and beech
in the east line 42 poles from the N.E. corner of the tract
thence S 72° W crossing a branch 12 1/2 poles to 2 dog woods
and 2 beechy in the west line, dividing it into two equal
parts

Mathew Arles
Janner Bird

Ja. W. Harrison