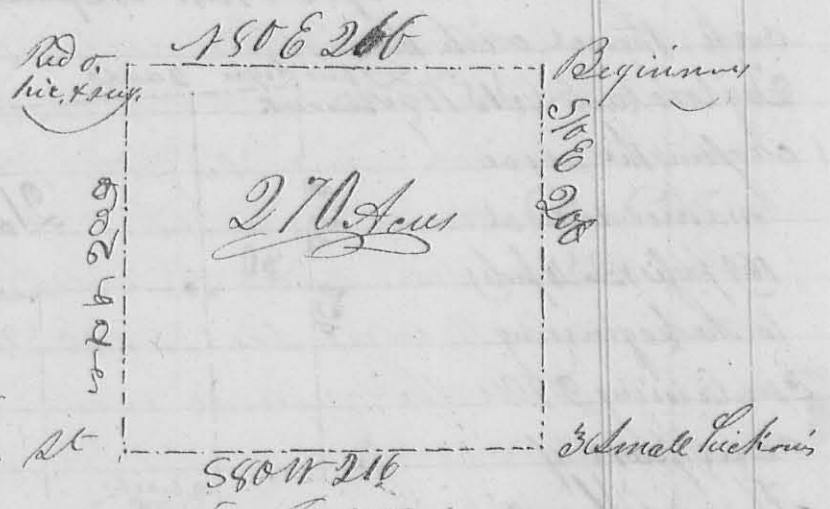


130 of a branch: thence $\text{S} 8^{\circ} \text{W}$ 12 poles to a beech and lynn
 in said line thence with said line $\text{S} 52^{\circ} \text{W}$ 13.3 to the be
 -ginning being part of Lewis Sullivan's survey n^o 3753
 Josiah Cutland & Co. C. M. Harmon
 William Evans & Co. C. S. G. B.

130
 Reg. 5386
 1A 12
 13

Thomas Hoge 5th Mo. (May) 30th 1831 Survey n^o 165
 n^o 165 (8156) Surveyed 270 acres for Thomas Hoge
 Beginning at two small elms and 2 Hickories in the north
 line of Robert Powers survey n^o 3683 200 poles from the N.E.
 corner of the original survey; thence $\text{S} 10^{\circ} \text{E}$ 200 poles to 3 small
 Hickories; thence $\text{S} 80^{\circ} \text{W}$ 216 poles to the west line of the origin
 -al survey; thence with said line $\text{N} 10^{\circ} \text{W}$ crossing 2 small
 branches, 200 poles to a
 red oak Hickory and
 Sugar tree N.W. corner
 to the original survey
 thence with the north
 line thereof $\text{N} 80^{\circ} \text{E}$
 216 poles to the begin
 ning, being in the N.W.
 corner of said survey



Robert M. Harmon } C. S. G. B.
 Henry M. Harmon }
 Samuel M. Harmon } (8155)

130
 Sol. Hoge 5th Mo. (May) 30th 1831 Survey n^o 166
 n^o 166 Surveyed 540 1/4 acres for Solomon Hoge
 Beginning at 3 small Sugar trees in the east line of
 Robert Powers Survey n^o 3683, 201 poles from the north east
 corner thereof; thence with said line $\text{S} 10^{\circ} \text{E}$, 210 poles (passing
 a Hickory small black oak and Sugar tree, corner at 120 poles)
 to an old line; thence with said line $\text{S} 80^{\circ} \text{W}$ 412 poles
 (crossing 2 small branches), to two lymselfin and 2 Sugar trees
 South west corner to the original survey; thence with the
 west line thereof $\text{N} 10^{\circ} \text{W}$ 210 poles to a stake; thence

131

780° E 412 (coping several small branches) to the begin-
 -ning of it 780° E 412 Beginning
 containing
 540 3/4 acres
 the south side
 of the said
 survey

5-10-11-2-10

540 3/4 Acres No. 3683

516 6/10

Dlymn
 Elm survey

580 W 412

Robert M. Mearns
 Samuel J. Mearns } Co

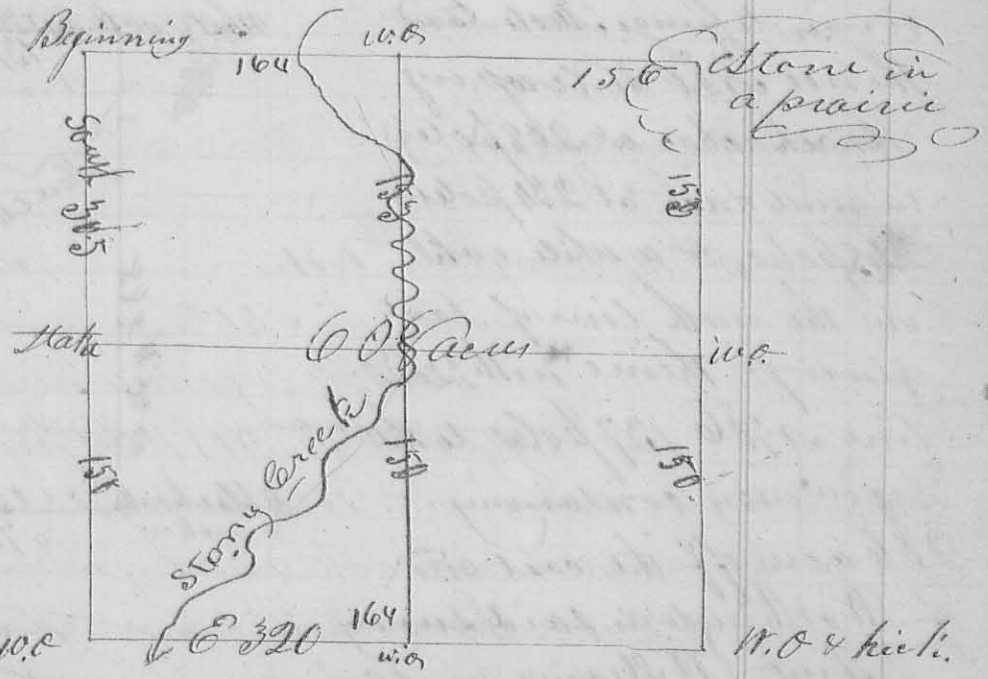
J. A. Mearns
 C. S. L. C.

Martin & (M. J. Garter) 20th 1831 Survey No 167
 Garter & Co. No 167
 Surveyed and divided Section 36 Town & Range

8256

15 M. No. as hereafter shown, for Martin Garter and others
 Beginning at the north west corner of the sec. original bear-
 -ing line, a cherry tree, now down, 6 links dist. west
 a white oak now 18 in. diam. east 5 links; thence south
 with the original line 305 poles to the south west corner
 of the sec. original corner is a W.O. now 20 in. diam.
 141 6/10 links dist. a W.O. 18 in. diam. 781 W 32 links dist.
 thence east, between sec. 35 & 36 320 poles, crossing stony bank
 at 25 poles, to the original corner of sec. 35, 36, 29, 30 a
 W.O. south 26

links dist a hick
 or 7 1/4 24 links
 dist; thence north
 between 35 & 36
 (passing in a hick
 -ory and bur oak
 original gr. sec
 corner at 141.6
 poles) 30 poles to
 a stone in a
 prairie the



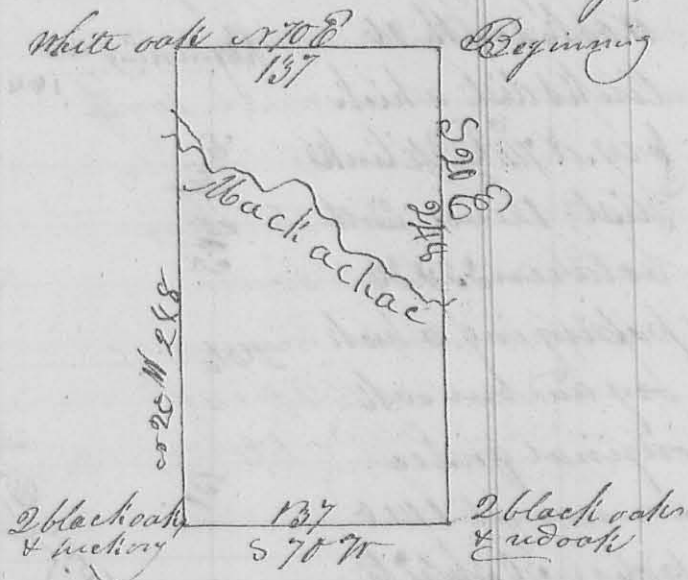
corner between sec. 35 & 36; thence west crossing stony
 creek at 210 poles) 320 poles to the beginning containing

132
 68 aers. - The division line east and west begins in ¹³²
 the east line 150 poles from the S. E. corner of the sec.
 a w. oak $\text{S } 70^{\circ} \text{ W } 23^{\circ}$ links; thence west, crossing the creek
 at 158 poles $\text{S } 20^{\circ}$ poles to a stake in the west line of the sec.
 The line north and south begins at a w. oak $\text{S } 83^{\circ} \text{ W } 16^{\circ}$
 links dist in the north line 164 poles from the N. W.
 corner of the sec.; thence south crossing the creek 9 times
 passing the center stake at 153 poles $\text{S } 04^{\circ}$ poles to a stake
 in the south line of the sec. a w. oak $\text{S } 34^{\circ} \text{ E } 19^{\circ}$ links.
 dist. 164 poles from the N. W. corner
 Cyrus Ferris } C.C.
 Henry Kelley } C.C. James Harmon

B. Long et al. } 10th Mo., Oct. 16 1831
 N. 168 } 3

Survey No 168

8258
 Surveyed 206 aers for Benjamin Long and step
 sons, heirs of Zabud Randall; beginning at a white
 oak, where formerly stood 2 white oaks hickory and elm
 (the hickory elm and one white oak is down), at the N. E.
 corner of Thomas Worthington's survey N 4497; thence
 with his east line $\text{S } 20^{\circ} \text{ E}$, crossing Machachae at 129
 poles, 248 poles to 2 black oaks and red oak, the S. E. cor
 -ner of said survey; thence $\text{S } 70^{\circ} \text{ W}$ with the south line of
 the original survey, 137 poles to 2 black oaks and hickory
 corner to George Meeks land
 thence $\text{S } 20^{\circ} \text{ W}$ (crossing
 Machachae at 268 poles)
 (a mill race at 234 poles)
 248 poles, to a white oak
 in the north line of said
 survey - thence with said
 line $\text{S } 70^{\circ} \text{ E}$ 137 poles to the
 beginning containing
 206 aers, off the east end
 of Worthington's said survey
 Jeffrey Williams } C.C.
 Thomas Wittett } C.C.



James Harmon
 C.C.