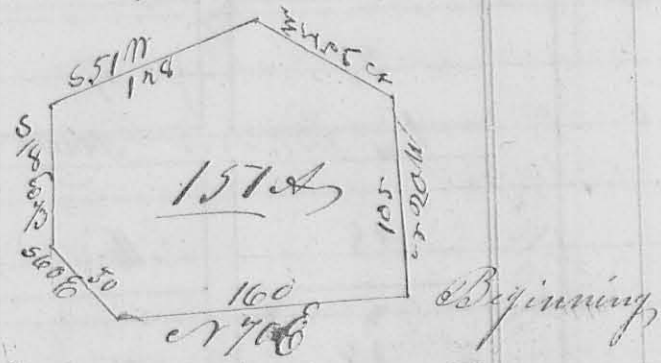


148 wide - The lots are 66 feet in front and 132 feet back - There is a stone planted at the north east corner of lot 2<sup>nd</sup> as represented on the plat -  
 June 27<sup>th</sup> 1832 J. M. Harmon C. S. L. C.

6<sup>th</sup> May June 10<sup>th</sup> 1832 - Survey, r<sup>o</sup> 185  
 Surveyed 157 acres of land for Jacob M. Pope beginning at the N.E. corner of Holland Kamps survey r<sup>o</sup> 3042 a stone in the west line of Thomas Parker's survey r<sup>o</sup> 4497 thence r<sup>20</sup> N 105 poles to the south line of James Calderwood's survey r<sup>o</sup> 3138 (passing a hickory & elm at 103 poles & 70 m from a white oak and hickory in Calderwood's said line and r<sup>70</sup> E 21 poles from 2 white oaks & hickory) - Thence with Calderwood's line r<sup>75</sup> N 81 poles to a white oak 2 dog woods & mulberry corner to James Dennis's survey r<sup>o</sup> 4957 thence S 59 N 428 poles (passing a branch to iron woods and sugar tree, corner to Dennis's survey 8490 thence S 18 E crossing a branch at 18 poles, 73 poles to a white oak and hickory corner to Dennis's said survey thence S 60 E 50 poles to 3 black

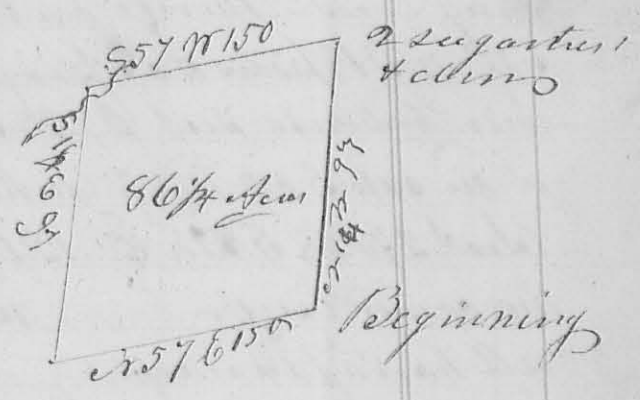


oaks N.W. corner to Joseph Jacob's land and corner to H. Kamps survey with thence with said line r<sup>78</sup> E 160 poles to the beginning being part of Walter Duni's survey r<sup>o</sup> 3655 on Mad River  
 Geo. Lavallee }  
 Wm. Smith } S. L.

J. M. Harmon  
 C. S. L. C.

877- 7<sup>th</sup> Nov. July, 24<sup>th</sup> 1832 - Survey, r<sup>o</sup> 186  
 Surveyed 86 1/4 acres of land for William Bradford Beginning at a blue ash, buckeye, and white walnut, easterly corner to David Bradford's survey r<sup>o</sup> 3136, South westerly corner to Thomas

149 Hoole's survey r 2674, thence with the east line of Bradford's said survey r 14 N 97 poles to two sugar-trees and elm, thence S 57 W 150 poles (crossing Sugar-camp branch at 142 poles, to 2 buckeyes and elm - thence S 14 E 97 poles to 2 buckeyes and ~~elm~~ in the south line of Bradford's said survey - thence with said line r 57 E 150 poles (crossing several drains to the beginning, being the south easterly corner of said Bradford's said survey on the waters of Mad River  
 John W. Rick  
 Henry M. Marmon } *et al.*



Ca. M. Marmon C. S. L. C.

8<sup>th</sup> Mo. (Aug. 24<sup>th</sup> 1832) Survey r 8173 187  
 Surveyed 51 acres of land for John Ewing Beginning at a white oak, iron wood and dogwood, r. E. corner to Christopher Smith's land in the south line of John Woodman's land, and corner to Josiah Austin's land, on the South bank of Darby's Creek and in the north line of Philip Slaughter's survey r 3154 thence with the west line of Austin's land S 36 E 72 1/2 poles to a sugar tree and Hickory & dogwood iron wood, r. E. to Henry Seaman's land thence S 14 1/2 N 113 poles to a stone and large Hickory corner to Seaman's land - thence r 36 N 77 poles to a stone and buck when formerly stood a sugar tree & iron wood  
 Lynn's buck r. E. corner to the land of Parker's heirs, and in the north line of the original survey - thence with said line r 57 E 113 poles (crossing the branch several times to the beginning, it being part of P. Slaughter's said survey on Darby's Creek  
 Ca. M. Marmon C. S. L. C.

