

The foregoing survey was made for R. Canby May 29. 1839. present bearing of the line N 11 W. of apt. south boundary. the line run at right angle - with the general course of the line  
 L. Hopkins, Corlar L. C. O

8456  
 Survey from 4. 18 39 for John B. Wilcox part of Survey of 3091. from sym. Hickory cut. thence S 1/2 N 12 1/2 poles to a Stone; W. Wood B. Geo. Elm & W. Beach. thence N 89 1/2 W 163 poles, crossing Big rock to a Stone at a Buck & Logwood. thence N 20 E 116 poles, crossing a run to a Stone in N. line of said Survey; thence with said line N 87 1/2 E 163 poles to the begining containing 122 acres. Also Survey for Mel. Elli. other part of same Survey as follows. Beginning at a Stone in the West bank of a run at an Ironwood & 2 Buck, at the West line of the Survey, and course to S 45 W. thence N 1/2 W 192 poles, crossing a branch at 2 poles and at 68. 146 - 160 poles to 2 bushes & W. O. new Stone; thence S 89 1/2 E 160 poles, crossing a Creek to a Stone & 2 Buck near a small drain; thence N 1/2 E 204 poles

8-31-2021



APPROVED



INNOVATIVE IDEAS  
EXCEPTIONAL DESIGN  
UNMATCHED CLIENT SERVICE

**CRAMER  
68.822 ACRES**

Situate in the State of Ohio, Logan County, Jefferson Township and lying in Virginia Military Survey 3327, and being out of the 111.062 acres as conveyed to J. Walter Cramer by deed of record in Official Record 1329, Page 813 (all records referenced herein refer to the Logan County Records of Deeds) and being more particularly described as follows:

**BEGINNING** at a magnetic nail set at the intersection of the center-lines of Township Road 135 (60 feet wide), being Station 74+00 (Logan County Engineer's Field Book 511, Page 68) and Ohio Route 47 (60 feet wide);

THENCE, with the center-line of Ohio Route 47:

With a curve to the left, having a delta angle of 6°48'54", a radius of 1432.39 feet, an arc length of 170.38 feet, a chord bearing and distance of North 74°-09'-13" East, 170.28 feet, to a magnetic nail set at P.T. Station 1006+57.77 (Logan County Engineer's File L-44);

North 70°-44'-46" East, a distance of 1734.85 feet to a point at a corner common to said 111.062 acre tract and that 4.340 acre tract as conveyed to Warren C. Trees by deed of record in Official Record 1170, Page 871, said point referenced by a railroad spike found bearing North 07°-01'-13" West, a distance of 0.15 feet

THENCE, South 07°-01'-13" East, a distance of 1747.73 feet, with the easterly line of said 111.062 acre tract and the westerly line of said 4.340 acre tract and that 20.210 acre tract as conveyed to Tommy Jarrett and Beverly Jarrett by deed of record in Official Record 862, Page 742, passing 5/8 inch rebars found at distances of 30.73 feet and 583.46 feet, and an angle iron fence post found at a distance of 1743.37 feet, to a rebar set (with a yellow cap stamped "DLZ OHIO INC.") at a corner common to said 111.062 acre and 20.210 acre tracts and the north line of that 9.494 acre tract as conveyed to Donn J. Herron, by deed of record in Official Record 1298, Page 593, Exhibit B;

THENCE, South 83°-41'-20" West, a distance of 217.46 feet, with the common line to said 111.062 acre and 9.494 acre tracts, to a 5/8 inch rebar found on the southerly line of said 111.062 acre tract and at a corner

INDEXED ON MAP  
8455



INNOVATIVE IDEAS  
EXCEPTIONAL DESIGN  
UNMATCHED CLIENT SERVICE

common to said 9.494 acre tract and that 22.049 acre tract as conveyed to Charles A. Rudd and Carolyn C. Rudd by deed of record in Official Record 1142, Page 611;

THENCE, South 83°-43'-38" West, a distance of 1871.07 feet, with the line common to said 111.062 acre and 22.049 acre tracts, passing a 5/8 inch rebar found at a distance of 1840.69, to a magnetic nail found on the center-line of said Township Road 135;

THENCE, with new division lines and said center-line:

North 04°-05'-35" East, a distance of 586.55 feet to a magnetic nail set at Station 66+50 (Logan County Engineer's Field Book 511, Page 67);

North 01°-25'-35" East, a distance of 759.58 feet to the **POINT OF BEGINNING**.

Containing 68.822 acres, more or less, of which 2.221 acres are within the highway rights-of-way.

The bearings in the above description are based on the grid bearing of South 01°-25'-35" West, for the center-line of Township Road 135 from Station 74+00 to 66+50, as determined by a GPS network of field observations performed in August, 2021 and are based upon the Ohio State Plane Coordinate System, North Zone, NAD83 (2011).

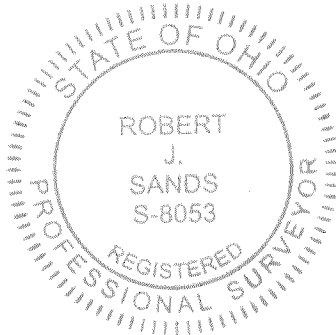
All rebar set are 5/8 inch in diameter and 30 inches in length, with a yellow cap stamped "DLZ OHIO INC."

I certify that this description is based upon a survey conducted under my direct supervision in August, 2021 and that it and the information contained herein are true and correct to the best of my knowledge.

DLZ Ohio, Inc.

*Robert J. Sands 08/26/21*

Robert J. Sands  
Professional Surveyor No. 8053



2121-2108.00REV



8-31-2021



APPROVED



INNOVATIVE IDEAS  
EXCEPTIONAL DESIGN  
UNMATCHED CLIENT SERVICE

**CRAMER  
45.833 ACRES**

Situate in the State of Ohio, Logan County, Jefferson Township and lying in Virginia Military Survey 3327, and being out of the 111.062 acres as conveyed to J. Walter Cramer by deed of record in Official Record 1329, Page 813 (all records referenced herein refer to the Logan County Records of Deeds) and being more particularly described as follows:

**BEGINNING** at a magnetic nail set at the intersection of the center-lines of Township Road 135 (60 feet wide), being Station 74+00 (Logan County Engineer's Field Book 511, Page 68) and Ohio Route 47 (width varies);

THENCE, with new division lines and said center-line of Township Road 135:

South 01°-25'-35" West, a distance of 759.58 feet to a magnetic nail set at Station 66+50 (Logan County Engineer's Field Book 511, Page 67);

South 04°-05'-35" West, a distance of 586.55 feet to a magnetic nail found on the southerly line of said 111.062 acre tract and a corner common to that 31.535 acre tract as conveyed to Clifford A. Cronkleton, Trustee and Rebecca K. Cronkleton, Trustee 31.535 acre tract by deed of record in Official Record 334, Page 329, Parcel VIII;

THENCE, with lines common to said 111.062 acre and 31.535 acre tracts:

South 83°-36'-24" West, a distance of 1319.71 feet, passing a 5/8 inch rebar set (with a yellow cap stamped "DLZ OHIO INC.") at a distance of 30.51 feet, to a 5/8 inch rebar found;

South 06°-55'-05" East, a distance of 269.28 feet to a 5/8 inch rebar set (with a yellow cap stamped "DLZ OHIO INC.") on the westerly line of said 31.535 acre tract and corner common to that 73.897 acre tract as conveyed to Clifford A. Cronkleton, Trustee and Rebecca K. Cronkleton, Trustee 73.897 acre tract by deed of record in Official Record 992, Page 741, being in Rushcreek Ditch;

INDEXED ON MAP  
8455



INNOVATIVE IDEAS  
EXCEPTIONAL DESIGN  
UNMATCHED CLIENT SERVICE

THENCE, with lines common to said 111.062 acre and 73.897 acre tracts, being chords to points in Rushcreek Ditch:

North 41°-54'-34" West, a distance of 331.49 feet to a point;

North 05°-11'-03" East, a distance of 148.50 feet to a point, referenced by a 5/8 inch iron rebar set (with a yellow cap stamped "DLZ OHIO INC.") bearing N 76°-26'-53" E, a distance of 15.00 feet;

North 08°-12'-03" East, a distance of 363.00 feet to a point;

North 02°-10'-03" East, a distance of 363.00 feet to a point, referenced by a 5/8 inch iron rebar set (with a yellow cap stamped "DLZ OHIO INC.") bearing N 82°-05'-22" E, a distance of 10.00 feet;

North 07°-16'-42" West, a distance of 413.70 feet to a magnetic nail set on the southerly right-of-way line of said Ohio Route 47;

THENCE, with said right-of-way line:

North 83°-20'-46" East, a distance of 39.11 feet to a 5/8 inch iron rebar set (with a yellow cap stamped "DLZ OHIO INC.");

North 76°-30'-12" East, a distance of 125.90 feet to a 5/8 inch rebar set (with a yellow cap stamped "DLZ OHIO INC.");

North 06°-39'-23" West, a distance of 30.00 feet to a magnetic nail set, being Station 991+00 (O.D.O.T. Plan LOG-47-18.73, Logan County Engineer's Map Room File 6594) on said center-line of Ohio Route 47;

THENCE, with said center-line:

North 83°-20'-46" East, a distance of 1242.77 feet, passing a magnetic nail found at a distance of 378.85 feet, to a magnetic nail set, being P.C. Station 1003+42.77 (O.D.O.T. Plan LOG-47, Logan County Engineer's Map Room File L-044);

With a curve to the left, having a delta angle of 5°-47'-06", a radius of 1432.39 feet, an arc length of 144.62 feet, a chord bearing and distance of North 80°-27'-13" East, 144.56 feet to the **POINT OF BEGINNING**.

Containing 45.833 acres, more or less, of which 1.859 acres are within the highway rights-of-way.

INDEXED ON MAP  
8455



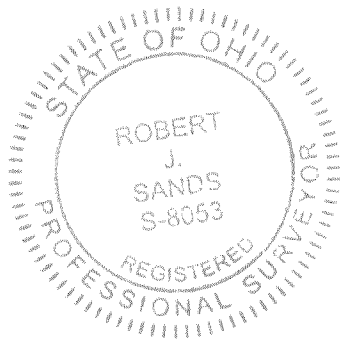
INNOVATIVE IDEAS  
EXCEPTIONAL DESIGN  
UNMATCHED CLIENT SERVICE

The bearings in the above description are based on the grid bearing of South 01°-25-35" West, for the center-line of Township Road 135 from Station 74+00 to 66+50, as determined by a GPS network of field observations performed in August, 2021 and are based upon the Ohio State Plane Coordinate System, North Zone, NAD83 (2011).

All rebar set are 5/8 inch in diameter and 30 inches in length, with a yellow cap stamped "DLZ OHIO INC."

I certify that this description is based upon a survey conducted under my direct supervision in August, 2021 and that it and the information contained herein are true and correct to the best of my knowledge.

DLZ Ohio, Inc.



*Robert J. Sands* 08/26/21

Robert J. Sands  
Professional Surveyor No. 8053

2121-2108.00REV



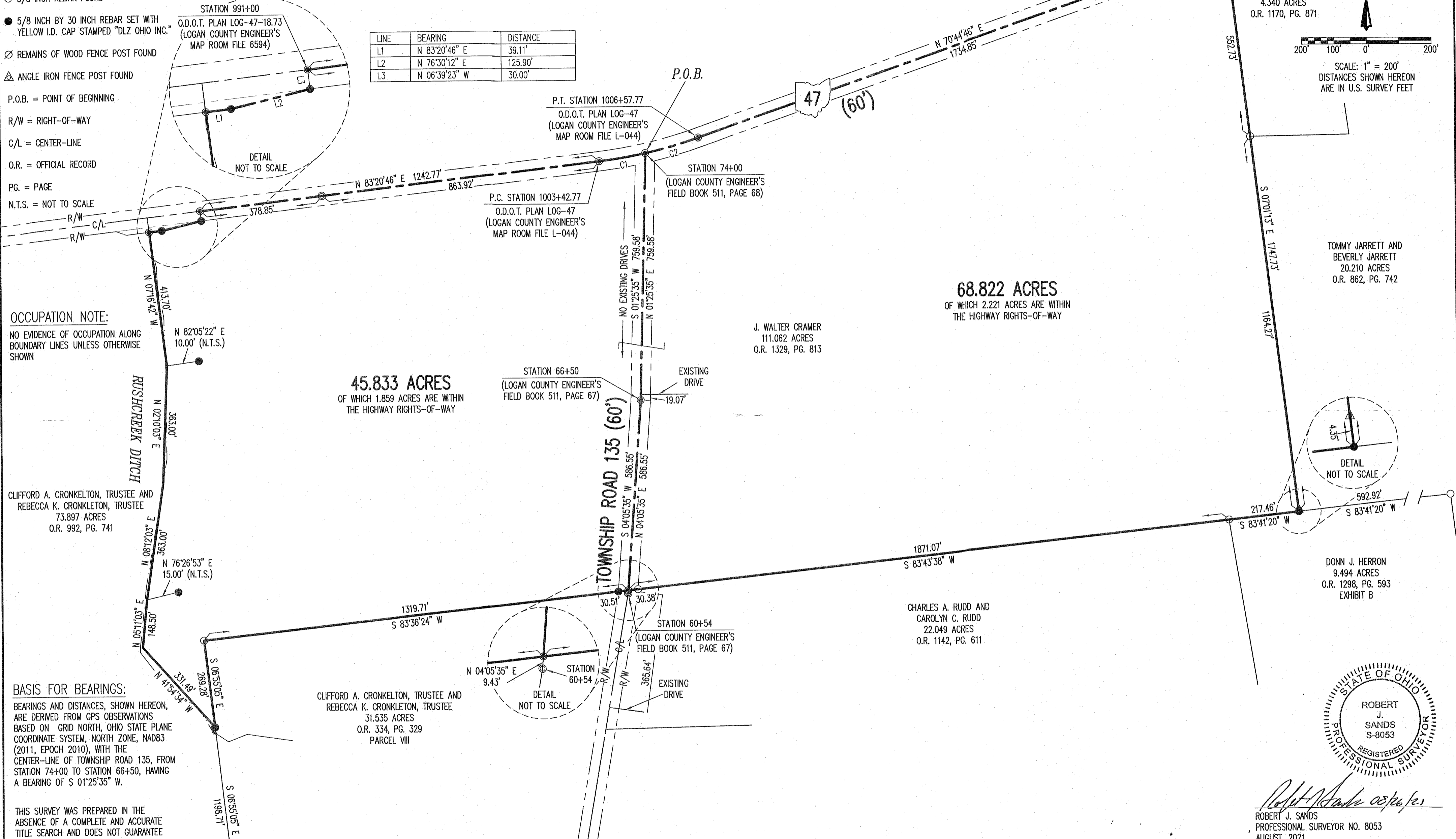
- LEGEND:**
- ⊗ RAILROAD SPIKE FOUND
  - ⊙ MAGNETIC NAIL FOUND
  - MAGNETIC NAIL SET
  - ⊕ 1 INCH REBAR FOUND
  - 5/8 INCH REBAR FOUND
  - 5/8 INCH BY 30 INCH REBAR SET WITH YELLOW I.D. CAP STAMPED "DLZ OHIO INC."
  - ⊘ REMAINS OF WOOD FENCE POST FOUND
  - △ ANGLE IRON FENCE POST FOUND

**DEED & SURVEY REFERENCES:**

REFERENCE DEEDS ARE SHOWN HEREON.  
 LOGAN COUNTY ENGINEER'S MAP ROOM FILES:  
 8968, 7406, 868, 7455, 6594, 1354, & R-044  
 LOGAN COUNTY ENGINEER'S FIELD BOOK 511,  
 PAGES 67 & 68

CURVE	DELTA ANGLE	RADIUS	ARC LENGTH	CHORD BEARING	CHORD LENGTH
C1	5°47'06"	1432.39'	144.62'	N 80°27'13" E	144.56'
C2	6°48'54"	1432.39'	170.38'	N 74°09'13" E	170.28'

LINE	BEARING	DISTANCE
L1	N 83°20'46" E	39.11'
L2	N 76°30'12" E	125.90'
L3	N 06°39'23" W	30.00'



**OCCUPATION NOTE:**

NO EVIDENCE OF OCCUPATION ALONG BOUNDARY LINES UNLESS OTHERWISE SHOWN

**45.833 ACRES**  
 OF WHICH 1.859 ACRES ARE WITHIN THE HIGHWAY RIGHTS-OF-WAY

**68.822 ACRES**  
 OF WHICH 2.221 ACRES ARE WITHIN THE HIGHWAY RIGHTS-OF-WAY

CLIFFORD A. CRONKELTON, TRUSTEE AND REBECCA K. CRONKELTON, TRUSTEE  
 73.897 ACRES  
 O.R. 992, PG. 741

CLIFFORD A. CRONKELTON, TRUSTEE AND REBECCA K. CRONKELTON, TRUSTEE  
 31.535 ACRES  
 O.R. 334, PG. 329  
 PARCEL VIII

CHARLES A. RUDD AND CAROLYN C. RUDD  
 22.049 ACRES  
 O.R. 1142, PG. 611

DONN J. HERRON  
 9.494 ACRES  
 O.R. 1298, PG. 593  
 EXHIBIT B

**BASIS FOR BEARINGS:**

BEARINGS AND DISTANCES, SHOWN HEREON, ARE DERIVED FROM GPS OBSERVATIONS BASED ON GRID NORTH, OHIO STATE PLANE COORDINATE SYSTEM, NORTH ZONE, NAD83 (2011, EPOCH 2010), WITH THE CENTER-LINE OF TOWNSHIP ROAD 135, FROM STATION 74+00 TO STATION 66+50, HAVING A BEARING OF S 01°25'35" W.

THIS SURVEY WAS PREPARED IN THE ABSENCE OF A COMPLETE AND ACCURATE TITLE SEARCH AND DOES NOT GUARANTEE TITLE.

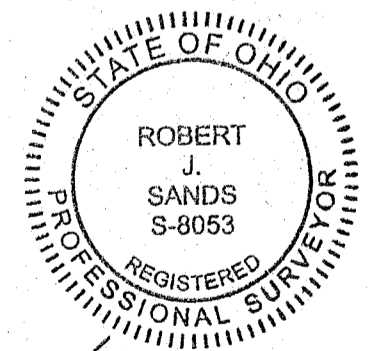
COPYRIGHT 2021 BY:  
  
 117 N. Madriver Street - Bellefontaine, OH 43311  
 (937) 593-7335 - www.dlz.com  
 Project #2121-2108.00REV

**ACCESS MANAGEMENT NOTE:**

TOWNSHIP ROAD 135 IS CLASSIFIED AS A LOCAL ROAD. MINIMUM DRIVE SPACING IS 250' MINIMUM STOPPING SIGHT DISTANCE IS >495 (55 MPH)

**BOUNDARY SURVEY OF TWO TRACTS**  
 VIRGINIA MILITARY SURVEY 3327  
 JEFFERSON TOWNSHIP  
 LOGAN COUNTY, OHIO

DRAWN BY:	DESCRIPTION	REV. NO.	DATE
KSS			8/5/2021
KSS	REVISED TO CORRECT ADJOINER INFO		8/25/2021



*Robert J. Sands*  
 ROBERT J. SANDS  
 PROFESSIONAL SURVEYOR NO. 8053  
 AUGUST, 2021

INDEXED ON MAP  
 8455